



Ballymena Enabling Scheme & Community Clusters Programme

**An Innovative Partnership Approach with
the Community & Council in Ballymena**

Ursula O'Loughlin

Council's Economic & Community Development Manager

Presentation Overview

- Phase 1 Enabling Capital Grants Scheme
- Community Clusters Support Programme
- Moving Towards Self Sustainability for the Community Sector Through Phase 2 Enabling Capital Grants Scheme
- Cluster & Community Planning
- Lessons Learned

Phase 1 Enabling Capital Grants Scheme

1998 - 2010

Purpose: To enable communities to take ownership of regeneration and development through capital funding to develop local facilities and services

Driving Force: Match funding opportunities through IFI, DETI, Big Lottery, Sport NI, DSD, Peace, Rural Development

Criteria:

- Community led and owned
- Clear need and demand
- Sustainable
- Minimum 1 : 1 leverage for Council funding
- Council should be last funder
- Evidence of community contribution

Phase 1 Enabling Capital Grants Scheme 1998 – 2010 (continued)

Successes:

- 13 community capital projects developed
- Over £13m invested in the Borough with 80% secured from external funding (Council £2.4m, Other £10.6m)
- Over 300 direct jobs created
- Improved community cohesion and morale
- On-going mentoring and programme support available from Council. £40,000 per project revenue support for first three years in operation

Community Clusters Support Programme

Aim: To protect the £13m capital investment and enable the community sector prepare for change envisaged through:

- RPA
- Reduction in Funding Opportunities
- Service Delivery Opportunities through Community Planning

Objectives

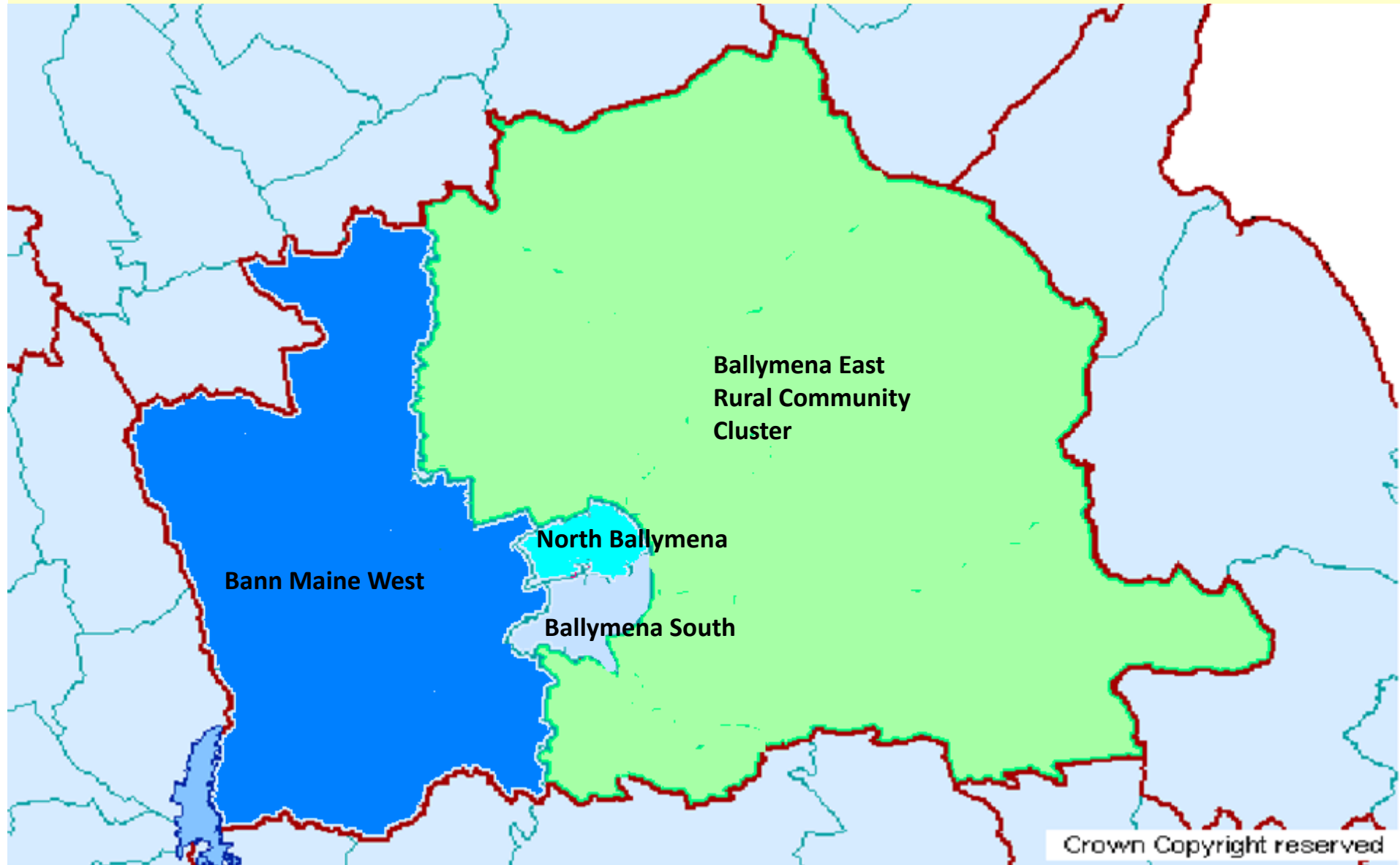
- Development of a network of 4 geographical clusters
- Improve opportunities for groups to collaborate and learn from each other
- To create a cohesive and sustainable third sector
- Leave groups in Ballymena in a strong position to embrace the competing challenges posed through RPA

Cluster Establishment Process

2009 - 2013



Cluster Areas



Bann Maine West

- Formed May 2010
- 8 core member groups
- Additional resources secured £56,950
- RDP monies secured
- 1,500 volunteer hours last year
- Council contribution so far - £66,000

Ballymena East Rural Community Cluster

- Formed May 2010
- 7 core member groups
- Additional resources secured £36,900
- RDP monies secured
- 1,500 volunteer hours last year
- Council contribution so far - £60,000

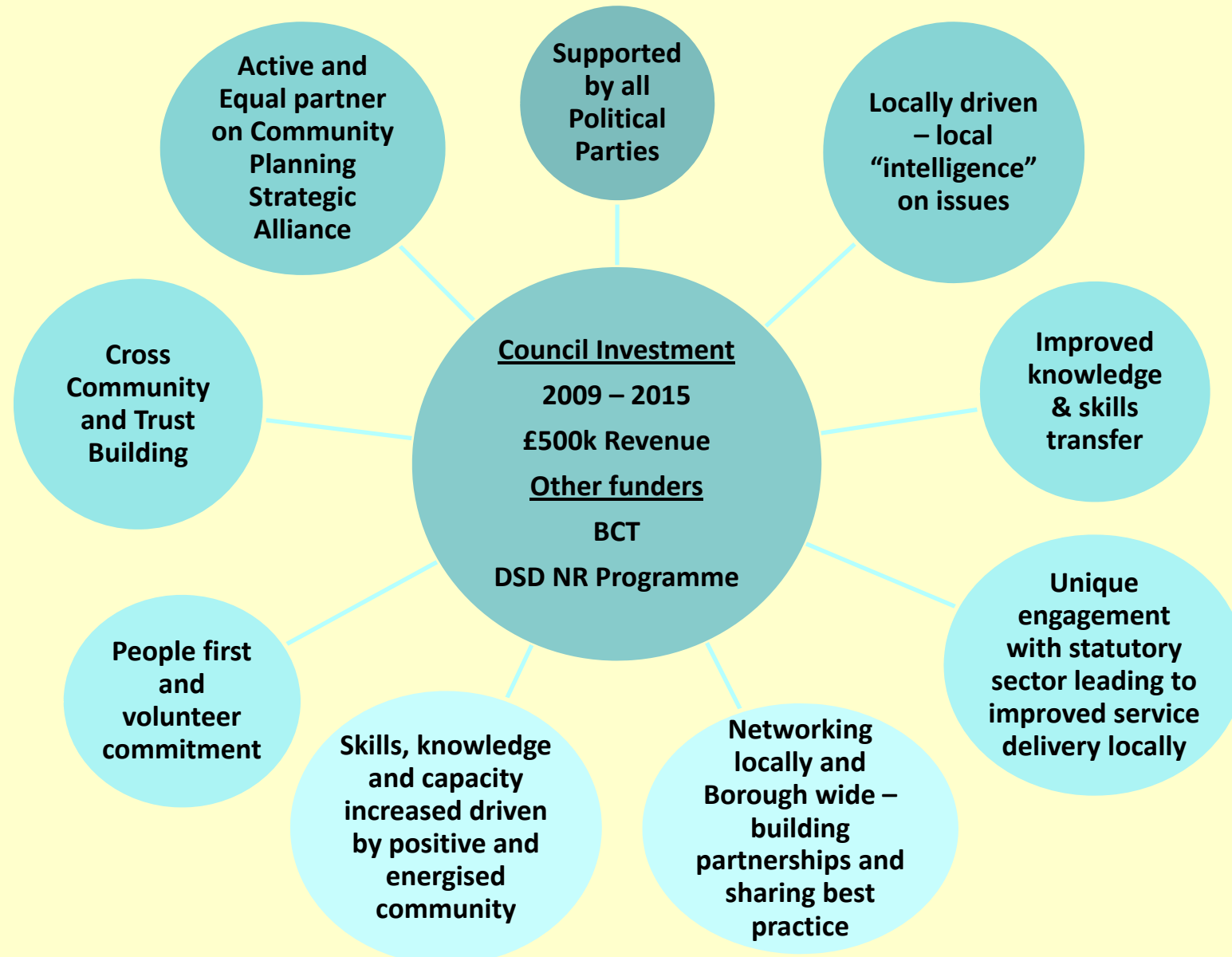
North Ballymena

- Formed Jan 2013
- 4 core member groups so far
- Additional resources secured £10,000
- 850 volunteer hours last year
- Council contribution so far - £15,200

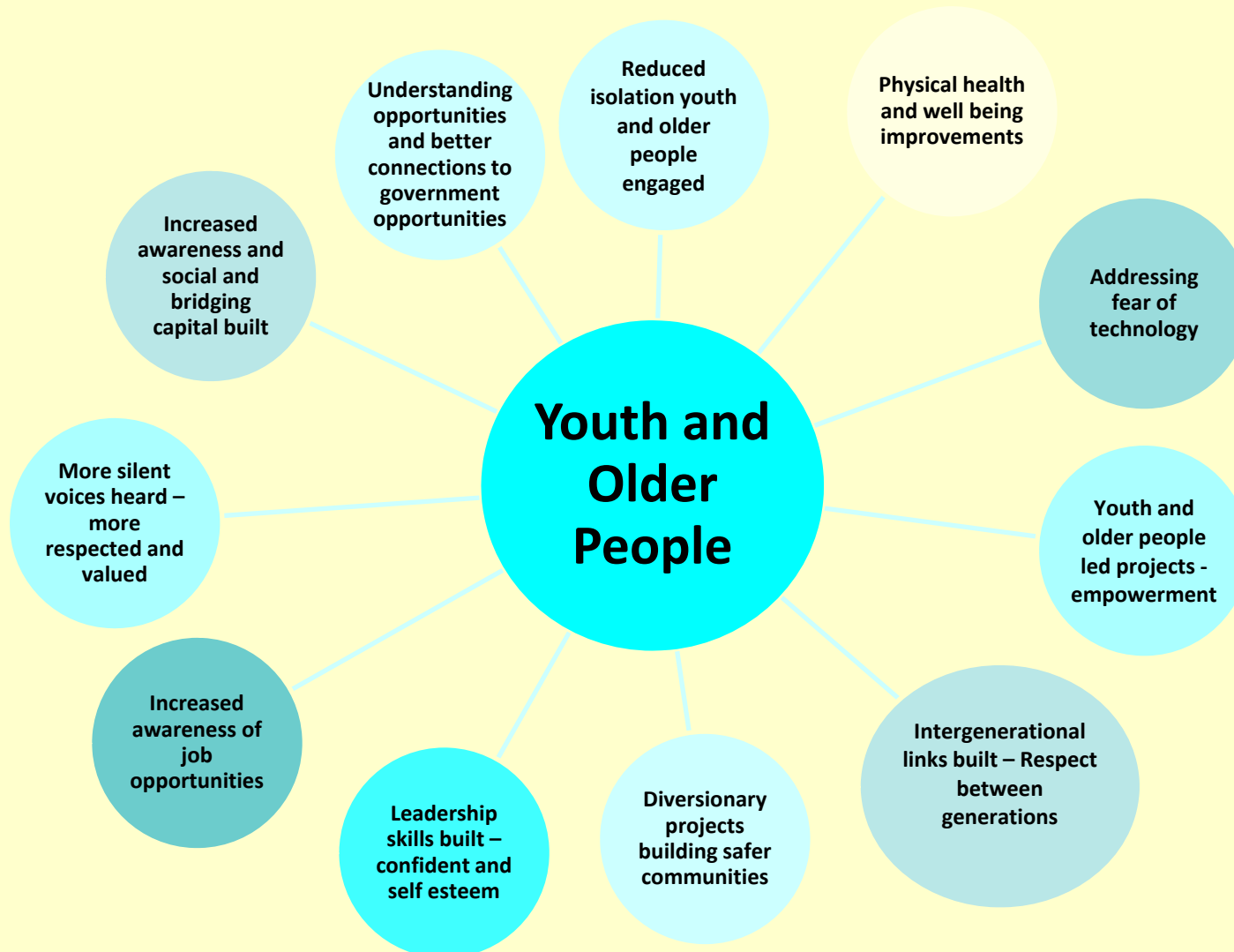
Ballymena South

- Formed Jan 2011
- 7 core member groups
- Additional resources secured £66,089
- 5,473 volunteer hours last year
- NR monies secured
- Council contribution so far - £59,604

Unique Features of the Model



Youth & Older People Core Outcomes/Emerging Impact



Good Relations, Peace Building & Community Safety Outcomes/ Emerging Impact



Good Relations

- Developing and implementing joint projects locally
- Engagement on good relations issues increased
- Consolidating relationships in local areas – beyond initial gatekeepers



Peace Building

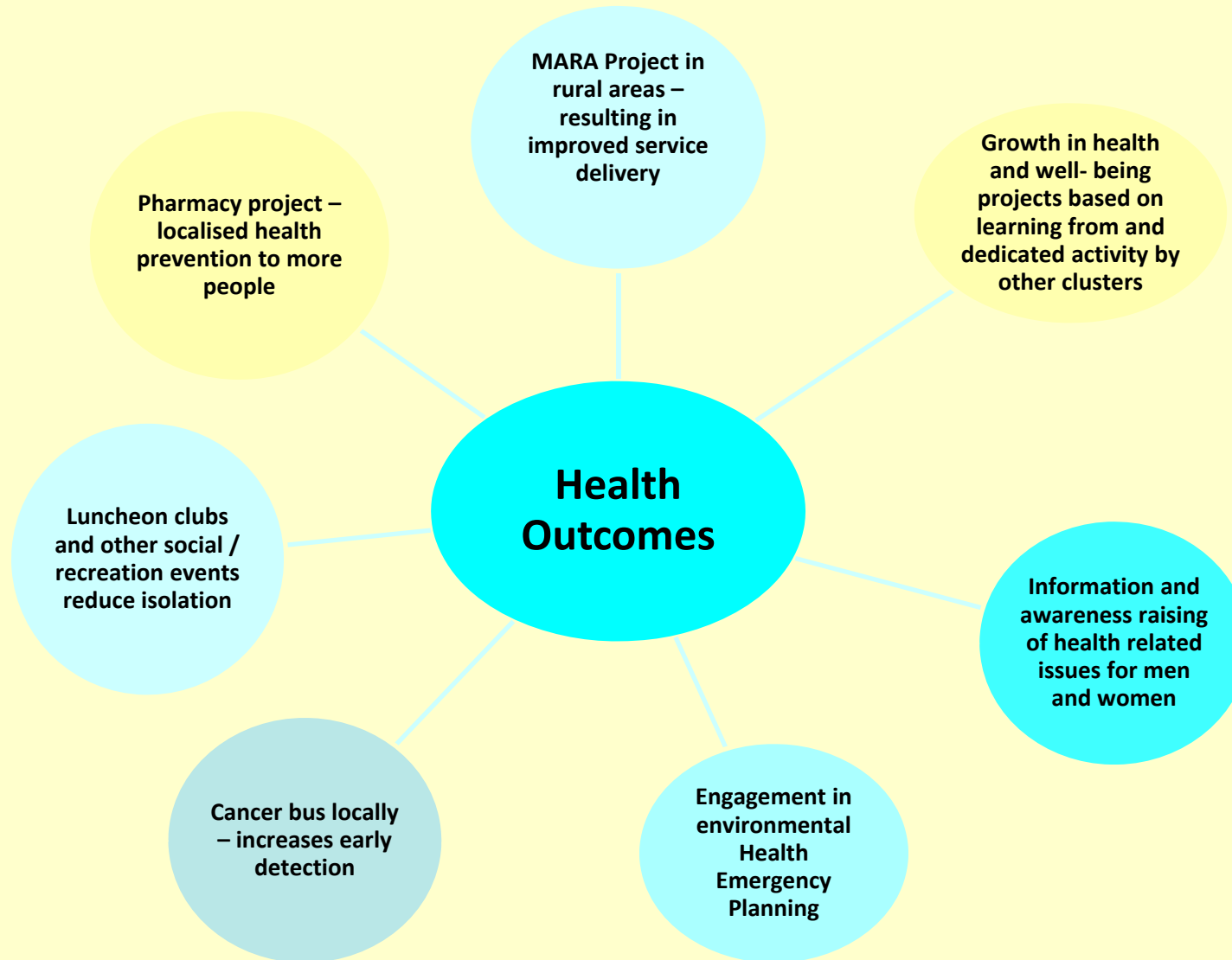
- Building relationships and friendships at local level
- Peace in the Park
- Building bridges and links with neighbouring groups
- Leadership and shared society programme – representatives from each cluster engaged



Community Safety

- Home security for older people reduces fear of crime and addresses isolation
- Contribution to a reduction in anti social behaviour
- Enabling engagement with local people on policing issues

Health & Well-being Outcomes/ Emerging Impact



Economic, Environmental & Social Outcomes/Impacts



Economic Activity

- At least 4 Full time equivalent jobs created to date
- Village renewal projects creates new economic growth opportunities locally
- Volunteer development opportunities which builds social capital and ability for communities to do more for themselves locally



Social Enterprise Growth

- Social enterprise led clusters x 4
- Bringing new social enterprises in each area
- Sustaining existing social enterprises
- Strengthening existing social enterprises and building community assets
- Building on best practice locally and beyond

Moving ... Towards Self-Sustainability

January
2011

- Initial Idea from Fermanagh Trusts Wind Energy Research

Feb –
June
2012

- Consideration by all Clusters

July
2012

- Council Launch Phase 2 £3.7m Enabling Capital Funding Programme with £1.4m ring fenced for Clusters

Dec
2012

- Clusters Secure Technical Assistance to Commission Feasibility Study & Economic Appraisal

June
2013

- Feasibility Study & Economic Appraisal Complete
- Application Made to Council and £1.4m Secured to Implement Project

Project Details

- To install 4 (250KW) wind turbines on 4 different site locations with planning permission as a joint community project between all Community Clusters in Ballymena
- To redistribute profits from Year 5 of the project to sustain, add to existing community services and provide new services within the community sector in Ballymena

Clusters & Community Planning

Community Planning Strategic Alliance (Multi-Agency & Community Clusters)



Community Planning Implementation Group



Thematic Partnerships

Economic

Health and Well-Being

Community Safety

Built and Natural Environment



Four Local Community Clusters

Bann Maine West

**Ballymena East Rural
Community Cluster**

Ballymena South

North Ballymena



Local Communities

Lessons Learned

- Significant investment by Council to make change happen (Council £7m to date)
- Significant Council staff resource required to support the programme
- Building trust and relationships with the community sector is NOT STRAIGHTFORWARD
- Building a genuine partnership requires dedicated commitment by Council and community
- PEOPLE POWER INCREDIBLE when given the opportunity
- 15 years on and we are beginning to get there!!

CONTACT DETAILS

Ursula O'Loughlin
Economic & Community Development Manager

Tel: 028 2563 3930

Email: ursula.o'loughlin@ballymena.gov.uk