

The Climate Emergency in Blackpool

An aerial photograph of Blackpool, England, taken during sunset. The sun is low on the horizon, casting a warm orange glow over the city. The Blackpool Tower is visible in the distance, silhouetted against the sky. The foreground shows a dense residential area with rows of terraced houses and streets.

Scott Butterfield, Strategy and Climate Lead

Blackpool Council

Key parts of our process

We want to mobilise everything at our disposal



We're leading the town and the wider region



We're doing it "the Blackpool way"



Key parts of our process

We want to mobilise everything at our disposal



We're leading the town and the wider region



We're doing it "the Blackpool way"



What's different in Blackpool?

- A specialist economy - tourism – with other opportunities, sometimes creating specific tensions
- Higher levels of deprivation – less community resilience and more immediate needs
- Administrative challenges – around resources, and LA borders
- Exposure to the “global weirding” of weather, rising seas and erosion/protection
- Potential for supporting the need for renewables – solar, wind, nuclear, tidal...
- Challenges and opportunities around transport – isolation, and aviation, but also alternative travel

What's different in Blackpool?

- A specialist economy - tourism – with other opportunities, sometimes creating specific tensions
- Higher levels of deprivation – less community resilience and more immediate needs
- Administrative challenges – around resources, and LA borders
- Exposure to the “global weirding” of weather, rising seas and erosion/protection
- Potential for supporting the need for renewables – solar, wind, nuclear, tidal...
- Challenges and opportunities around transport – isolation, and aviation, but also alternative travel

Our Key Themes:

Blackpool Council

10 key themes were identified in our Climate Emergency Action Plan:

- Building Knowledge, Capacity and Financial Resources
- Community Leadership, Communication and Involvement
- Buildings and the Built Environment
- Transport, Getting Around and Digital
- Cleansing, Food, Water and Waste
- Natural Environment
- Working With Others
- Power and Heat
- Business
- Housing



Climate Planning

Blackpool Council

Our plans are made up of actions relating to both mitigation and adaptation.



Blackpool Council
Climate
Emergency Action
Plan



Green & Blue
Infrastructure
Plan



Blackpool
Council Climate
Adaptation
Action Plan

Homes

Blackpool Council



Garstang Road
West Flats retrofit
programme



30 new Council
homes with air
source heat
pumps, solar
power and battery
storage



Improving the
standard of
private sector
homes



Built Environment

Blackpool Council



Construction of Civil Service town centre hub to “BREEAM excellent” standard



Multiversity development to be carbon-neutral in operation

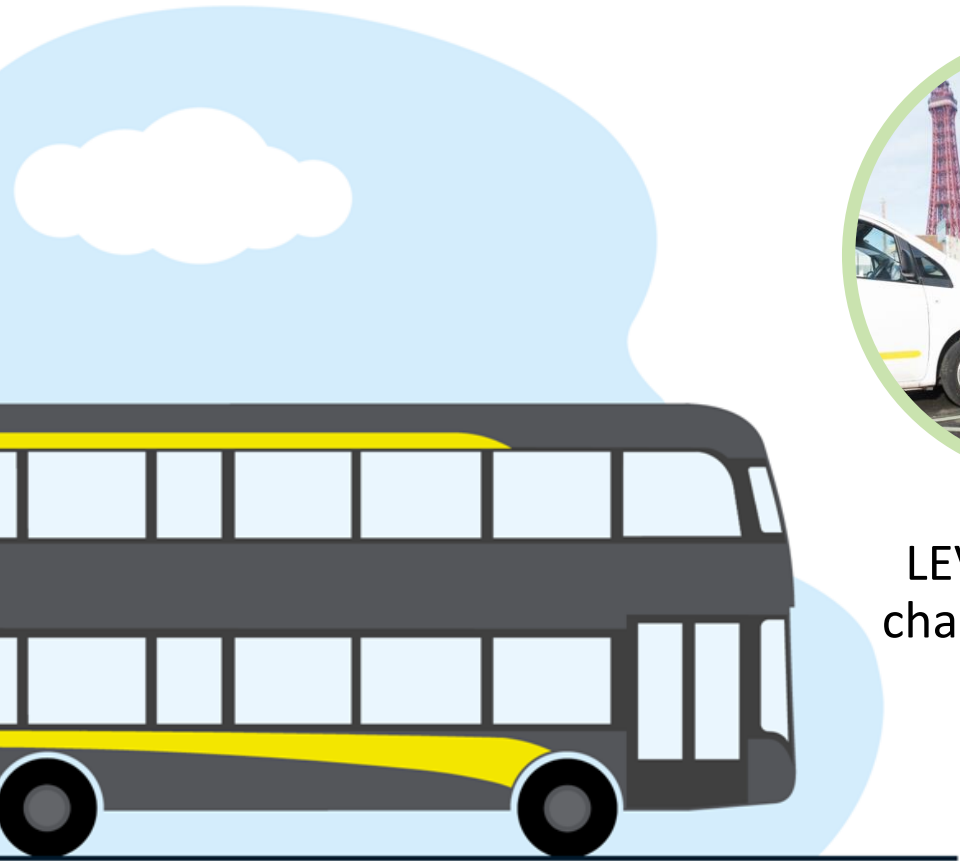


Road Network Resilience Plan



Travel and Transport

Blackpool Council



LEVI funded EV charging facilities



Completion of Blackpool North tramway extension



ZEBRA funded rollout of electric buses

Jobs and Economy

Blackpool Council



Supporting businesses to reduce their emissions – the Blackpool Net Zero Academy



Upskilling workforce on how to retrofit homes



Increasing use of local companies to deliver contracts



Waste and Resources

Blackpool Council



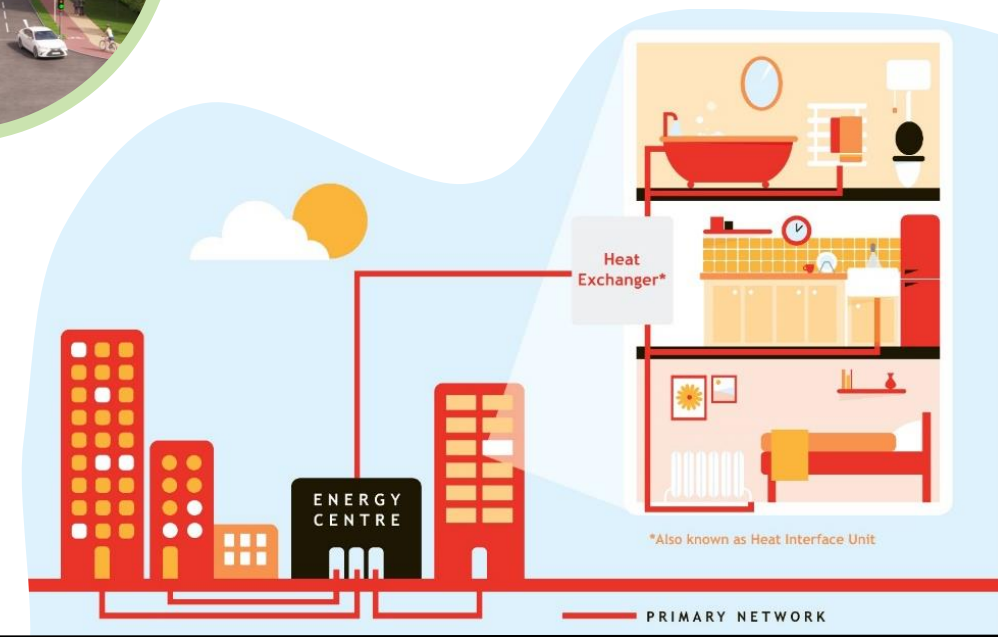
Water butt scheme



Co-operative heat networks



Circular Economy, re-using and recycling items





Solar panels installed across council buildings



Work ongoing to deliver solar farm at Blackpool airport



Exploring potential for wind power



Town-wide Carbon
Literacy Training



Cycling and Active
Travel



Eco-Hub at Palatine
Library



Nature and Green Space

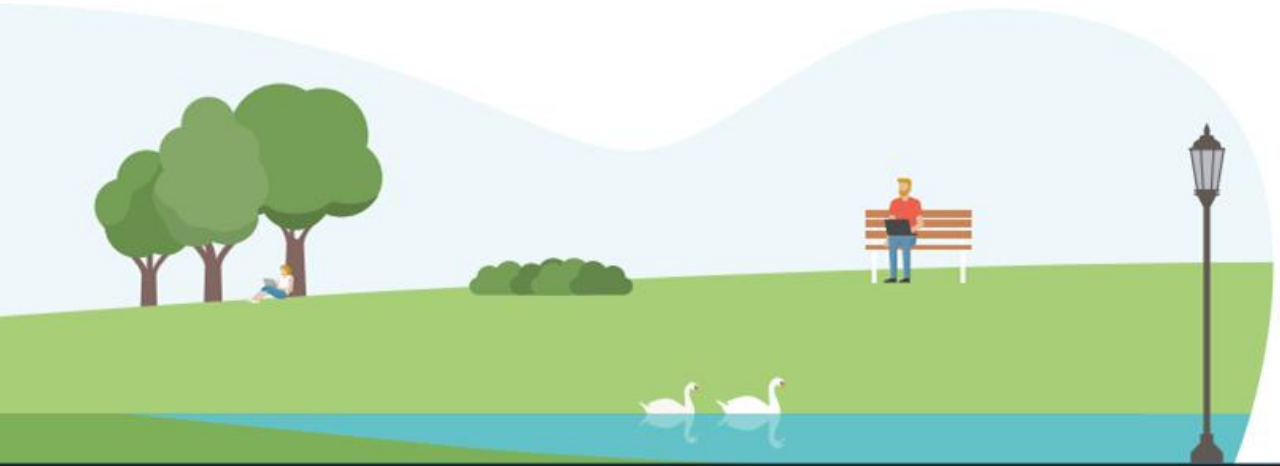
Blackpool Council



Exceeding our tree planting target



Coastal protection – sea defences



Beach nourishment and sand dune improvements

Towards a 'climate-first' organisation

Building consideration of the climate into everything we do, including via:

- Asset Management Plan and Energy and Utilities Strategy reviews
- Organisational carbon footprinting and improved performance reporting
- Developing and piloting Environav tool with Genecon
- Climate Change and Environment Scrutiny Committee
- Climate Change training tailored to roles
- General Impact Assessment process



Driving performance

Blackpool Council



Environav



DEFRA ARP 4th
Round



CDP reporting



APSE Performance
Networks tool



Performance Indicators

Blackpool Council

To enable the accurate monitoring of reductions in emissions, a set of performance indicators have been established. A small number of headline of headline KPIs have been identified:



Total CO₂ emissions
by the Council
(tonnes)



Total CO₂ for Blackpool
(tonnes)



% of household waste
collected for recycling

Supporting KPIs - Council

Blackpool Council



Alongside the headline KPIs, a number of supporting KPIs have been identified for the Council such as:

CO₂ emissions from:

- Council buildings
- vehicles, fleet, transport and equipment
- roads and street furniture (inc. lighting and traffic lights)
- staff and councillor travel and travel at work

Annual consumption of:

- electricity
- gas
- water



Forecasting tool by Genecon
Consultancy with the Cambridge Centre
for Climate Change Mitigation Research

Answers the question:
How much is our decarbonisation work
reducing emissions in the town?

Involves:

- Calculating baseline emissions
- Mapping interventions
- Calculating outcome of interventions
- Monitoring and tracking progress

Go live in January 2025



Forecasting tool by Genecon Consultancy with the Cambridge Centre for Climate Change Mitigation Research

Answers the question:
How much is our decarbonisation work reducing emissions in the town?

Involves:

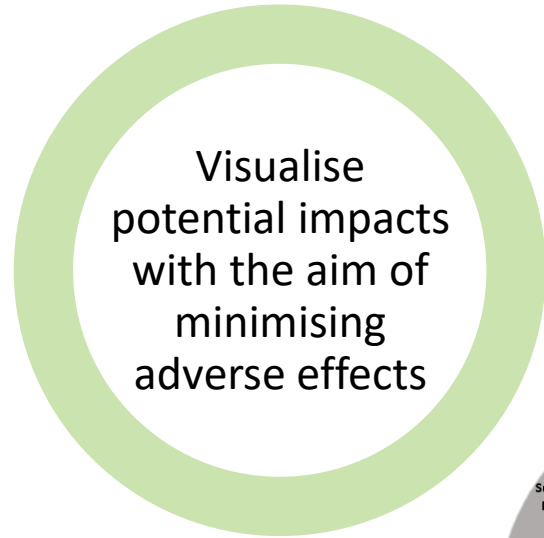
- Calculating baseline emissions
- Mapping interventions
- Calculating outcome of interventions
- Monitoring and tracking progress

Go live in January 2025



General Impact Assessment

Blackpool Council



Thank you
Any questions?

Blackpool Council

