

Food Waste Work Stream

Andy Mudd, Head of APSE Solutions

- **Food waste: Why does it matter in a climate context?**
 - The carbon footprint of food
 - Working out the hoofprint on meat and dairy products
 - Minimising food waste: What actions can local councils take?
 - Changing behaviour : residents and businesses

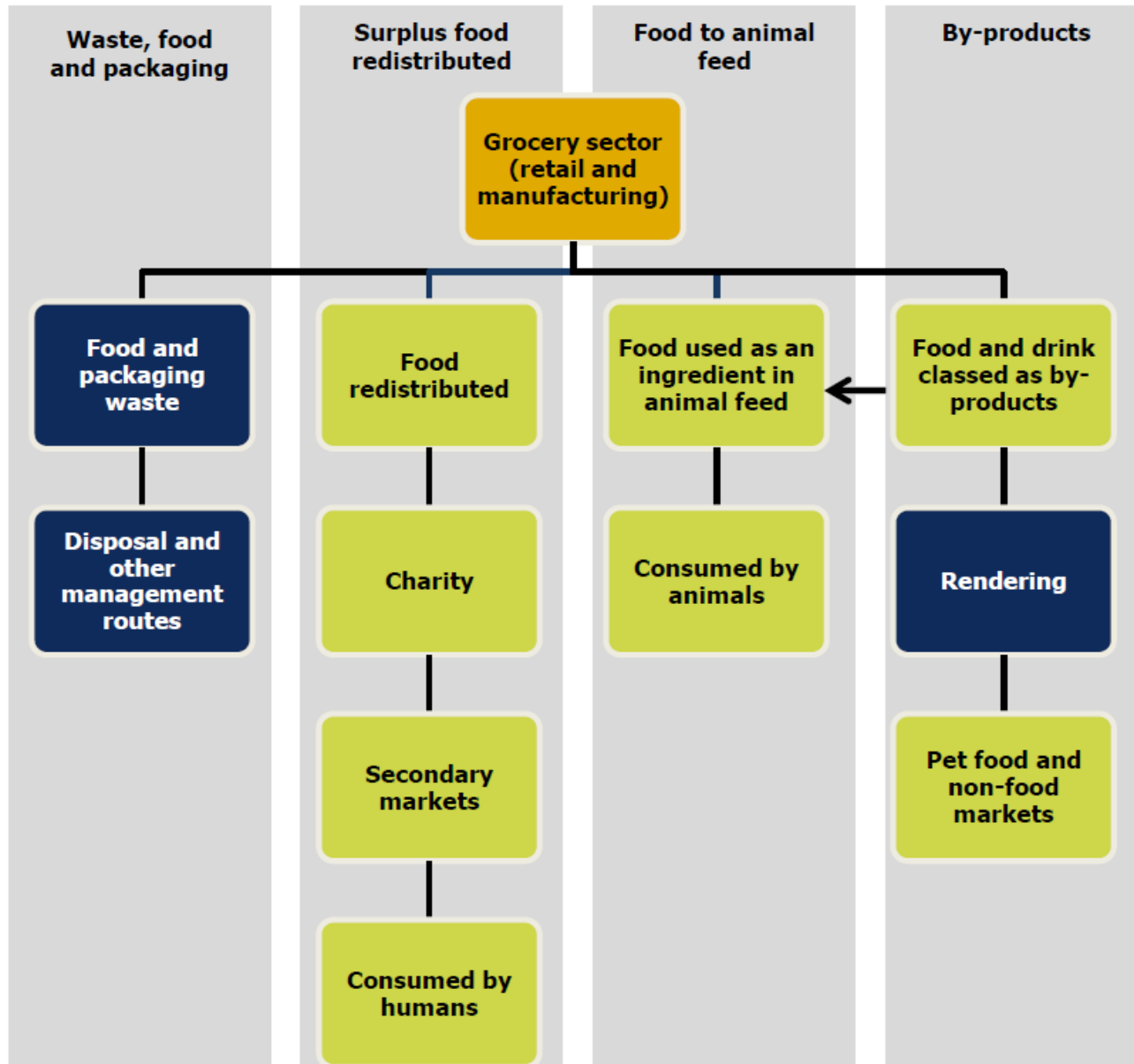
- Agriculture generates about 20% of worlds greenhouse gas emissions
- Impact of globalisation on local food production
- Ecological impact of food production
- Soil and water depletion
- Loss of habitat
- Deforestation

- £80bn GVA (about 7% of UK total)
- 170mt CO₂e emissions (21% of UK total)
- Food production uses about 70bn m³ of water (70% UK total)
- UK households spent £101bn on food and drink

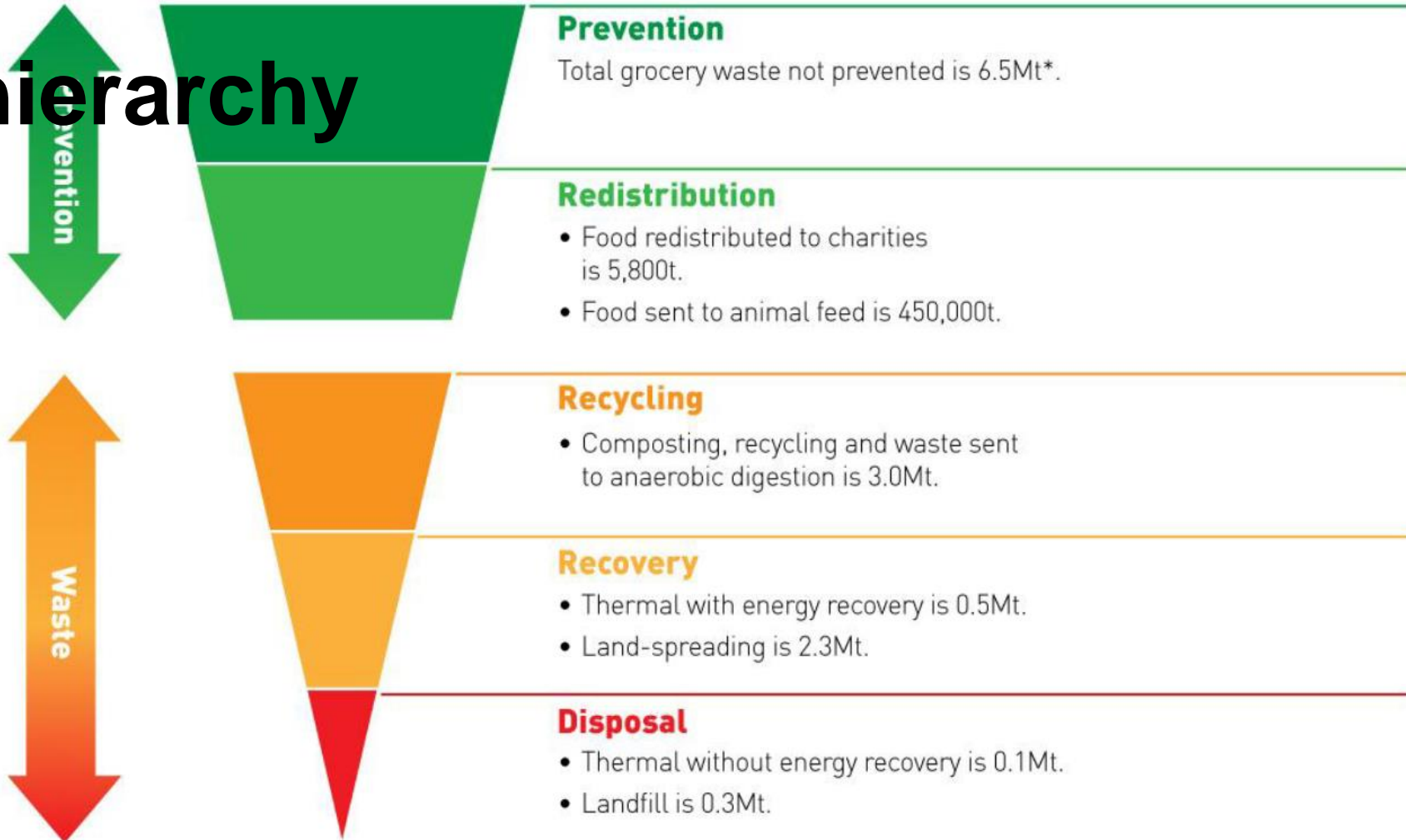
Source WRAP, 2013



Grocery waste and non-waste material flows



Waste hierarchy



- Where is the current emphasis?
- Is this the best we can do?
- What is the role of local authorities?

Contact details

Andy Mudd, Head of APSE Solutions

Email: amudd@apse.org.uk

www.apse.org.uk



GB 11409



GB 11132



GB 14074

Association for Public Service Excellence

3rd floor, Trafford House, Chester Road,
Old Trafford, Manchester M32 0RS.

telephone: 0161 772 1810

web: www.apse.org.uk