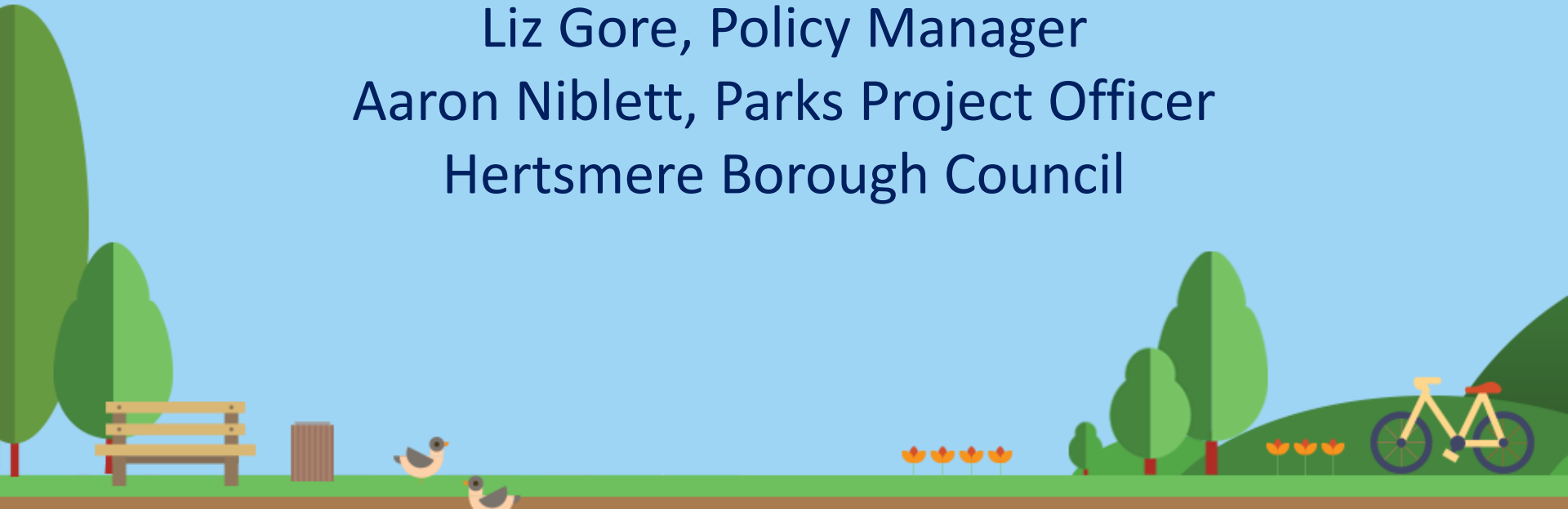




ParksHerts

Hertfordshire Parks Web Project

Liz Gore, Policy Manager
Aaron Niblett, Parks Project Officer
Hertsmere Borough Council

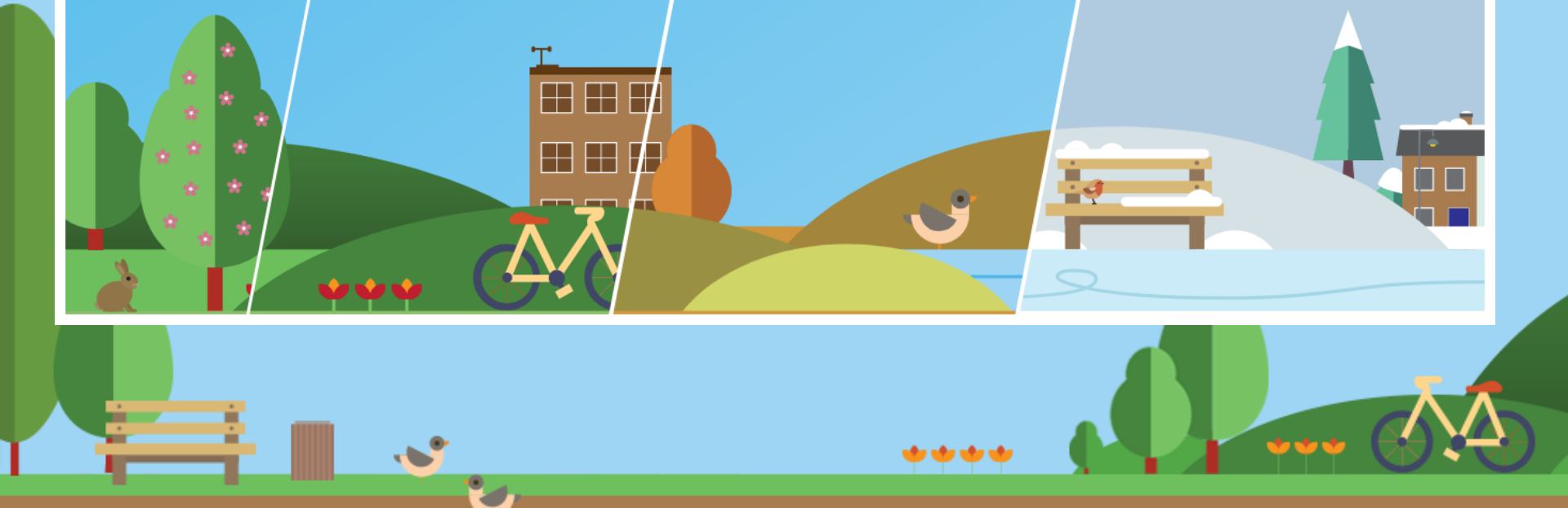


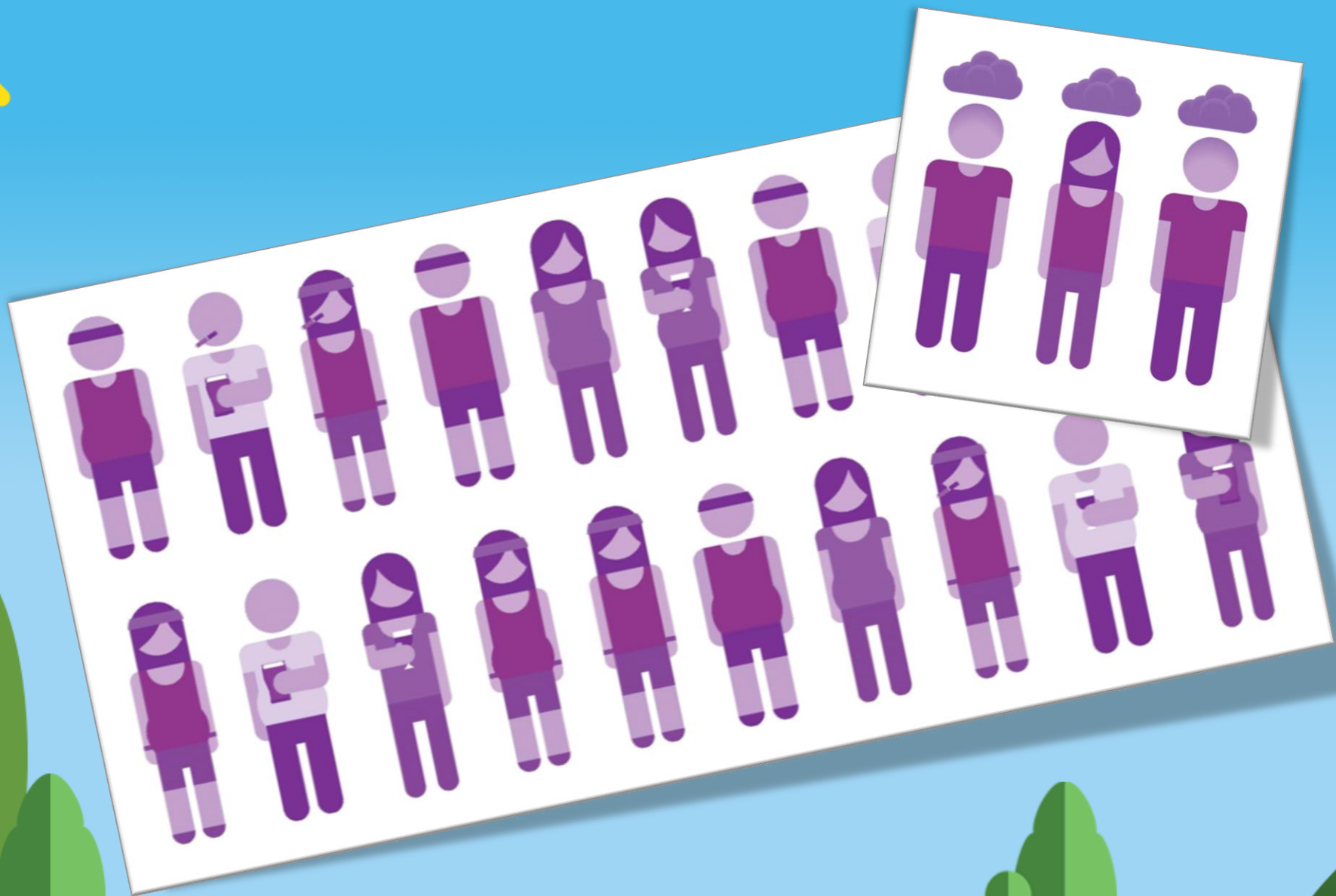
ParksHerts

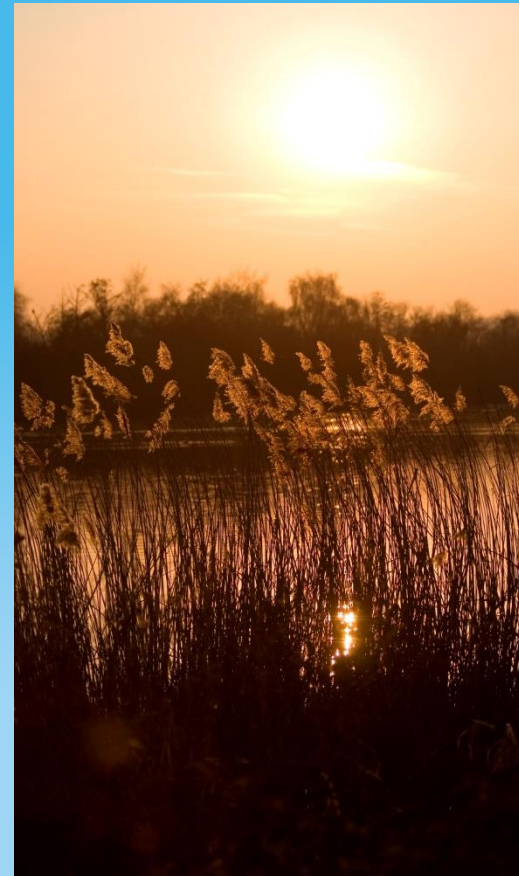


Let's get some fresh air

Lets get exploring >







First Steps

- No single access to information about open spaces
- Development of Hertfordshire Partnership Fund
- Recognised link between population health and wellbeing and access to green space
- Buy in from County Council, 10 Districts and Parish Council



Project Specification

- Generic appeal
- Fun and User Friendly
- Consistent Information
- Move away from 'Council speak'
- Data Collection
- Easy to Maintain

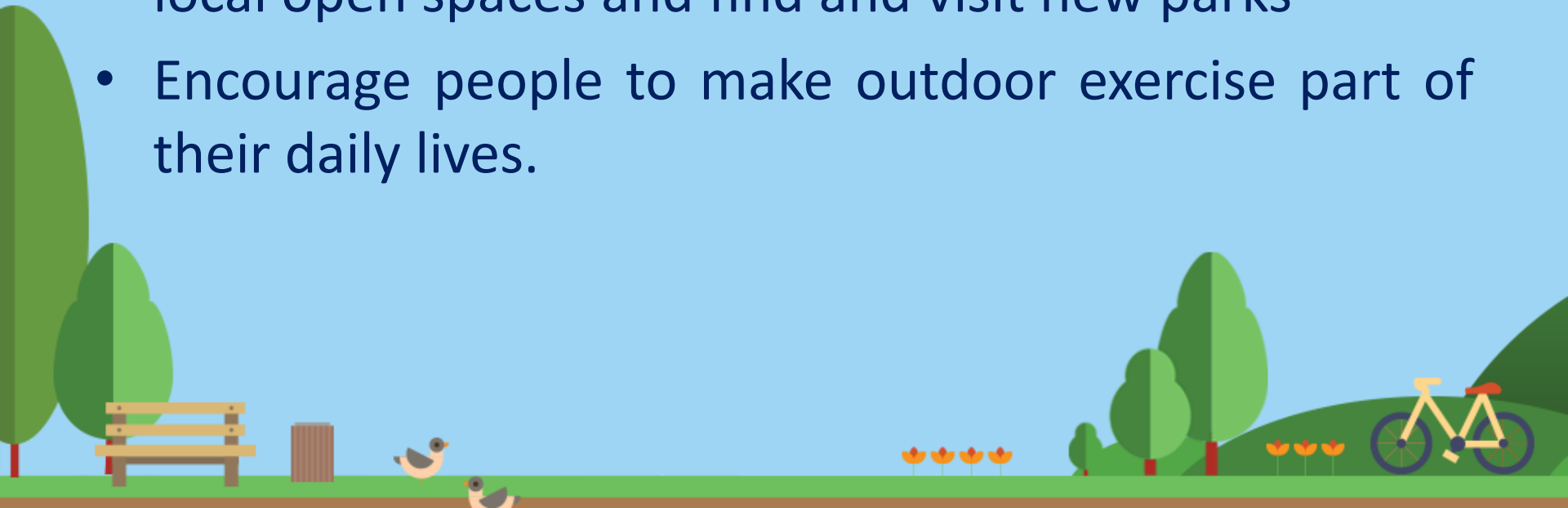




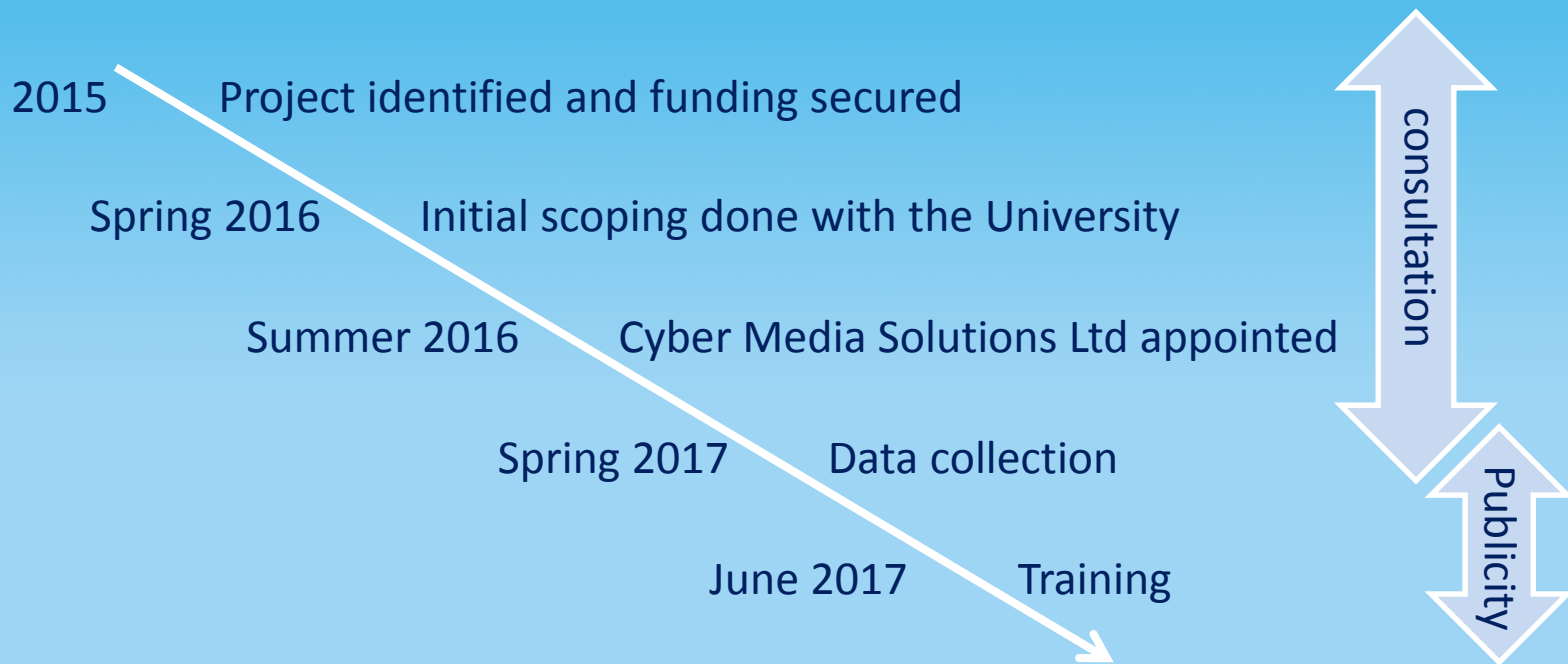
ParksHerts

A mobile friendly website which aims to:

- Help local residents to make more of their valuable local open spaces and find and visit new parks
- Encourage people to make outdoor exercise part of their daily lives.



Project Development

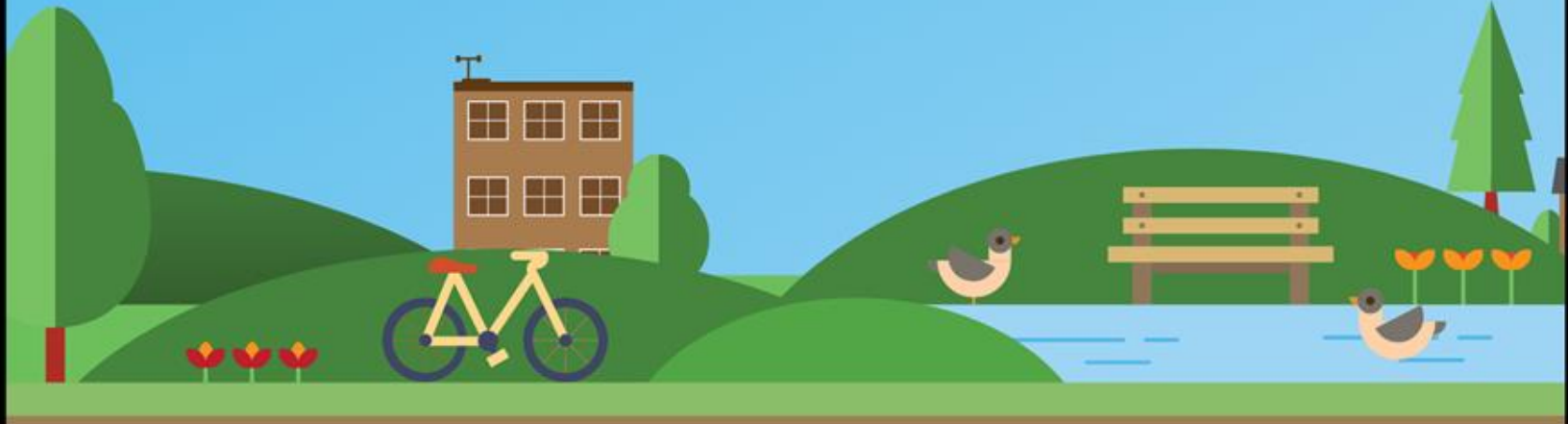


Launched in 'Love Parks Week' - 21 July 2017



Let's get some fresh air

Lets get exploring >





So, tell me who's coming?



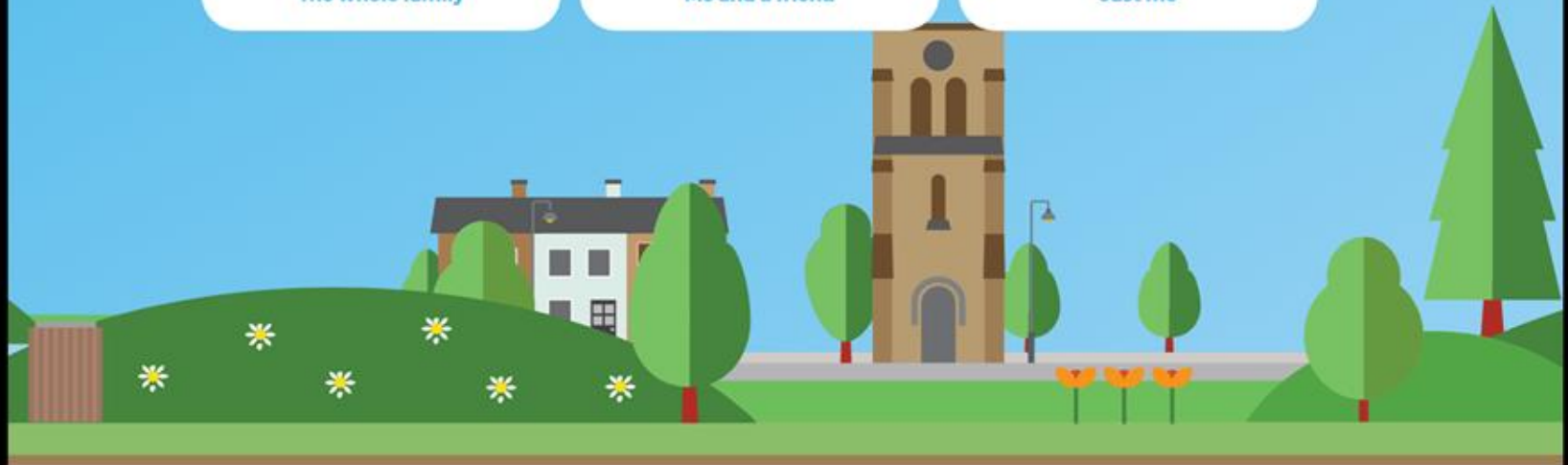
The whole family



Me and a friend



Just me





... and what's the plan?



Get some fresh air



Walk, run or cycle



Make a day of it



Take it easy









Rose Garden
A small enclosed award winning park in Bushey planted with different varieties of rose over 4000 plants

[Explore this Park](#)





King George Recreation Ground
Award winning destination park in Bushey with wide variety of play and sport including an exciting tropical island splash park

[Explore this Park](#)

Ripon Park
Local park for play and recreation in Borehamwood

[Explore this Park](#)

Clarence Park
Flagship park in the heart of St Albans City Centre

[Explore this Park](#)




Shephalbury Park
A great site for family recreation in the Broadwater area of Stevenage

[Explore this Park](#)




Carpenters Wood
Ancient semi-natural and part planted woodland consisting of Whitelands Wood, Hillas Wood and Carpenters Wood situated

[Explore this Park](#)




Cassiobury Park
Including Whippendell Wood Watford's best loved park with pools, play area, cafes, nature, and a bandstand - a must see

[Explore this Park](#)




Wey Way Playing Fields
Comprising of a children's play area and sports pitches in the north of Stevenage

[Explore this Park](#)






Stanborough Park
A flagship, Green Flag winning park close to Welwyn Garden City with 2 large lakes which provides numerous leisure activities both on water and land!

[Explore this Park](#)




Prestwick Road Meadows
A Local Nature Reserve in South Oxhey

[Explore this Park](#)

Hampson Park
This attractive and historical parkland lies at the highest natural point in Stevenage

[Explore this Park](#)




Rothamsted Park
Flagship park in Harpenden with something for all the family

[Explore this Park](#)




Croxley Common Moor SSSI Local Nature Reserve
40 hectares of Historic Grassland in Croxley Green

[Explore this Park](#)




Chells District Park
A mixture of sports pitches and open space to the east of Stevenage

[Explore this Park](#)




Road Cemetery
A very high standard, this cemetery is in the centre of St Albans and contains over 30,000 burials

[Explore this Park](#)




King George V Playing Field, Welwyn Garden City
Large park in Welwyn Garden City with loads of sporting facilities from bowls to BMX!

[Explore this Park](#)




Moneyhole Lane Playing Fields
Large playing field on the edge of Panshanger which offers outdoor activities including football pitches, a children's playground and a tree belt walk

[Explore this Park](#)






Bovingdon Green
Open space to the south of Bovingdon Village awarded Queen Elizabeth II status in 2012

[Explore this Park](#)




Broxbourne and Bencroft Woods
Charming ancient woodland close to Brickendon, the diverse wildlife and rich history make the National Nature Reserve a truly magnificent place to explore

[Explore this Park](#)

Bunkers Park
Beautiful, award winning, natural habitat to the east of Hemel Hempstead. Home to numerous bird species and one of Hertfordshire's most important butterfly habitats

[Explore this Park](#)




Furze Field
King George V Playing Fields, Upper and Lower Halfpenny Bottom Nature Reserve in Potters Bar

[Explore this Park](#)




Clay Park
A park close to Hoddesdon with a beautiful ornamental lake and multi-sports court - perfect for all the family

[Explore this Park](#)




Bishops Park
A large grassed open space just off Woodpecker Close in Bishops Stortford with plenty to keep the kids occupied

[Explore this Park](#)




Bishops Wood
38 ha Country park on the outskirts of Northwood filled with wildlife

[Explore this Park](#)




Chipperfield Common
Award winning historic woodland and the heart of Chipperfield Village. See if you can find the ancient burial mounds before historic trees

[Explore this Park](#)




Composers Park
Colourful wildflower meadows in Elstree including an extensive play and kickabout area

[Explore this Park](#)




Croxley Hall Woods
Area of ancient and beautiful woodland, close to Croxley Green. Perfect for a leisurely walk taking in the local plant and

[Explore this Park](#)




Fairlands Valley
Fantastic award winning park in Stevenage with something for everyone including childrens play areas, cafe and

[Explore this Park](#)

Park Information

Share Print

On Site Facilities

Hertfordshire's only National Nature Reserve (NNR) and also recognised as a Special Area of

...ome to many species of woodland

...

...er, very large area of sessile oak and

...atural range. Broxbourne and Bencroft

...e, the other two being Hoddesdon

...Sites of Special Scientific Interest' (SSSI)

...call them home.

...ing routes with Broxbourne Woods

Car Park (Free)



Disabled Access



Dogs Welcome



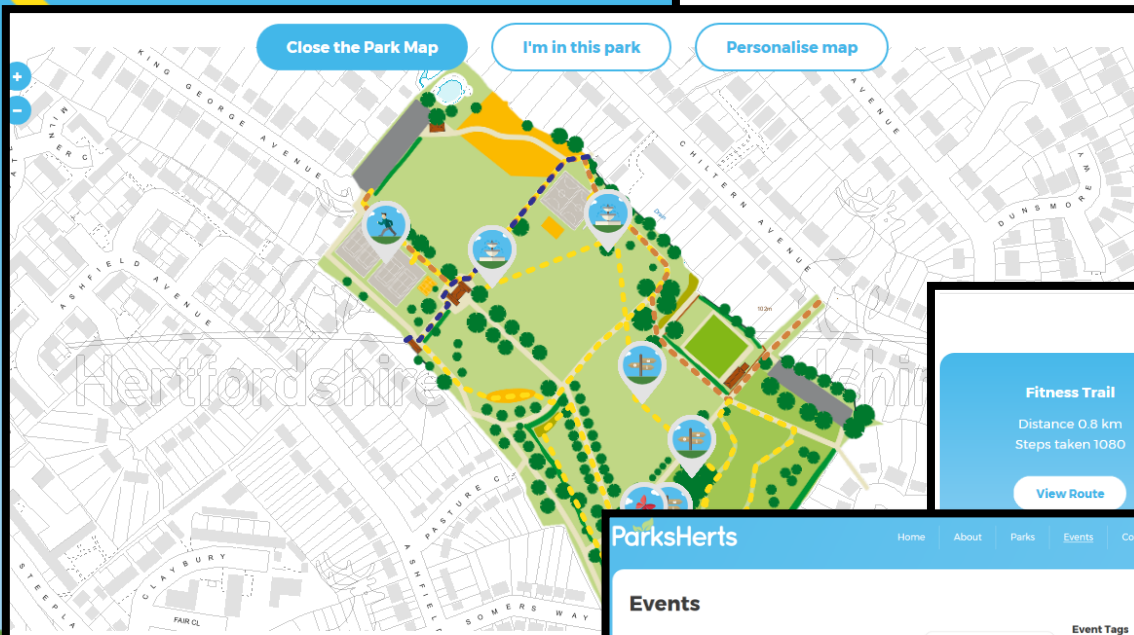
Pushchair Friendly Paths



Close the Park Map

I'm in this park

Personalise map



Park Routes

Fitness Trail

Distance 0.8 km
Steps taken 1080

View Route

History trail

Distance 0.4 km
Steps taken 476

View Route

King George Recreation Ground Easy Access

Distance 0.6 km
Steps taken 771

View Route

ParksHerts

Home About Parks Events Contact Google Custom Search

Events

Order by date

Event Tags

- Active
- Family
- Health & Fitness
- Mum & Baby
- Dog Show

Bushey Stroller Strength

Wednesday 12th July at 10:00am - 11:00am.

Located at King George Recreation Ground.

Stroller Strength is like your normal outdoor bootcamp but incorporates your pushchair and your little ones.



How to get here

Parking:

Free Car Park off Woodpecker Close, Bishops Stortford, CM23 4QA

Public Transport Information:

Information on public transport is available here: www.intalink.org.uk and www.nationalrail.co.uk

Cycling:

Pedestrian access available from Woodpecker Close.

History trail

Distance 0.4 km
Steps taken 476

View Route

King George Recreation Ground

Distance 84.1 km

View Route

View all routes on map

Editing Bushey Rose Garden - Step 1 of 3

[Save & Preview](#)

[Back to listing](#)

Essential Details

Park Name: REQUIRED
Bushey Rose Garden

Park Introduction: REQUIRED
0.5 ha Grade II registered Park and Garden of Special Historic Interest in Bushey. 2 routes and 16 points of interest

Park Short Description:

Park Owner:

Opening Times:

Bushey Rose Garden

#1 OF 14 FORMAL/ URBAN/ DECORATIVE

445

day visits

-

current events

890

visits per Hectare

1 Park Routes

1 MOST POPULAR ROUTES

Accessible garden circuit ✓ 0.07 views per day

✓ 0.29km completed

16 Points of Interest

3 MOST POPULAR POIS

Coffee Cart ✓ 0.07 views per day

Bird Feeder ✓ 0.05 views per day

The Summer House ✓ 0.04 views per day

1

[Edit](#)

[Deactivate](#)

[Delete](#)

Average day visits

With 890 visits per Hectare for Bushey Rose Garden, thats...

831%

Compared to parks in this region (95.55 visits per Hectare)

#1 of 14 parks

932%

Compared to Formal/ urban/ decorative parks (86.24 visits per Hectare)

#1 of 14 parks

3889%

Compared to all parks (22.51 visits per Hectare)

#1 of 106 parks

Key

- This park
- Parks of this type
- Parks in this region
- All parks

Editing Bushey Rose Garden - Step 2 of 3

[Save & Preview](#)

[Back to listing](#)

Categories SEO Travel Details Location

Below you can set the central location point of a park by using either the marker on the map (Drag and Drop), or by inputting the values and using the search buttons.

Please note: Each search button will move the marker within map and should be used as a reference to drag/drop the marker to your desired location.



Easting/Northing

REQUIRED
513540.24932508415

Longitude/Latitude

REQUIRED
-0.36048609559043

[Back to step 1](#)

[Save & Continue](#)

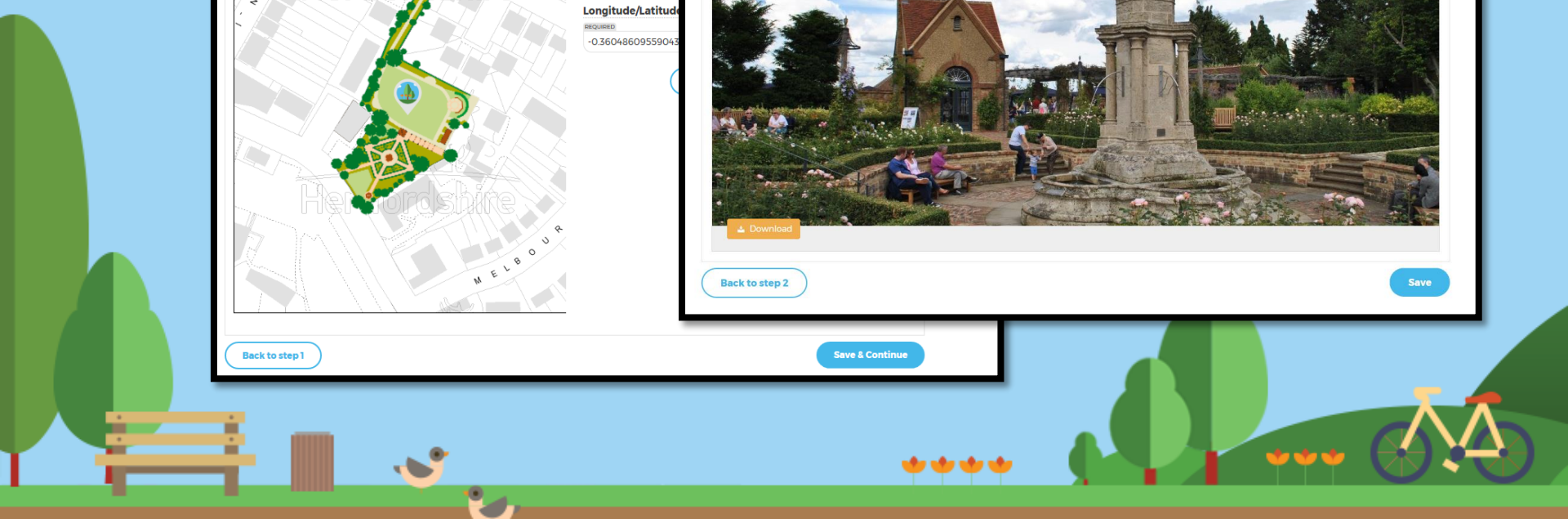
Editing Bushey Rose Garden - Step 3 of 3

Image 1 Image 2 Image 3 Image 4 Image 5 Image 6



[Back to step 2](#)

[Save](#)



Promotion

I like getting muddy

WOODY, AGED 6



ParksHerts

Find your perfect park with ParksHerts 

With over a hundred parks and open spaces in the county, there is so much more to see in Hertfordshire.

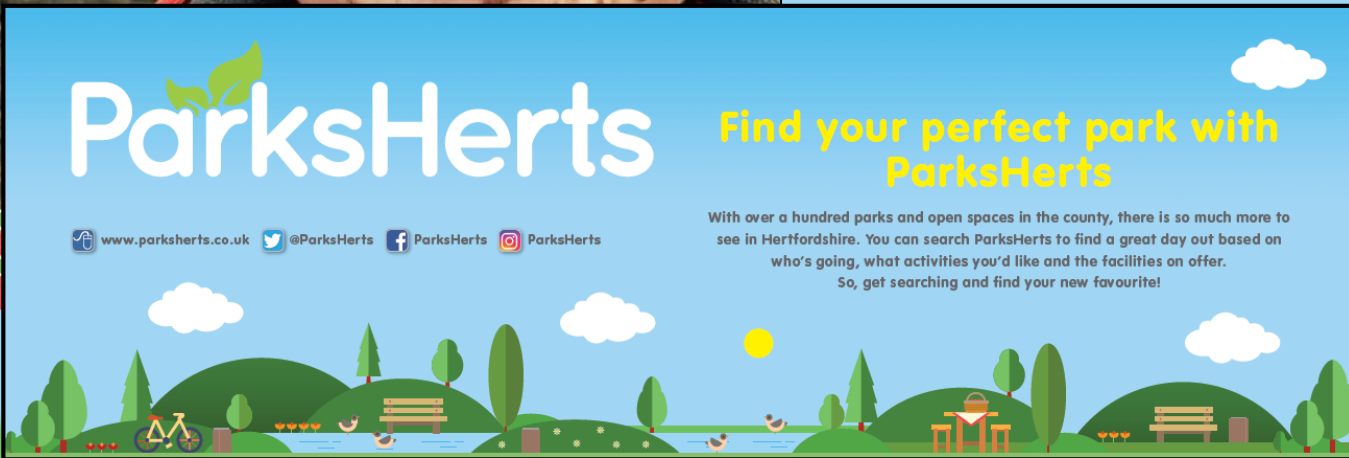
You can search ParksHerts to find a great day out based on who's going, what activities you'd like and the facilities on offer. So, get searching and find your new favourite!

ParksHerts

Find your perfect park with ParksHerts

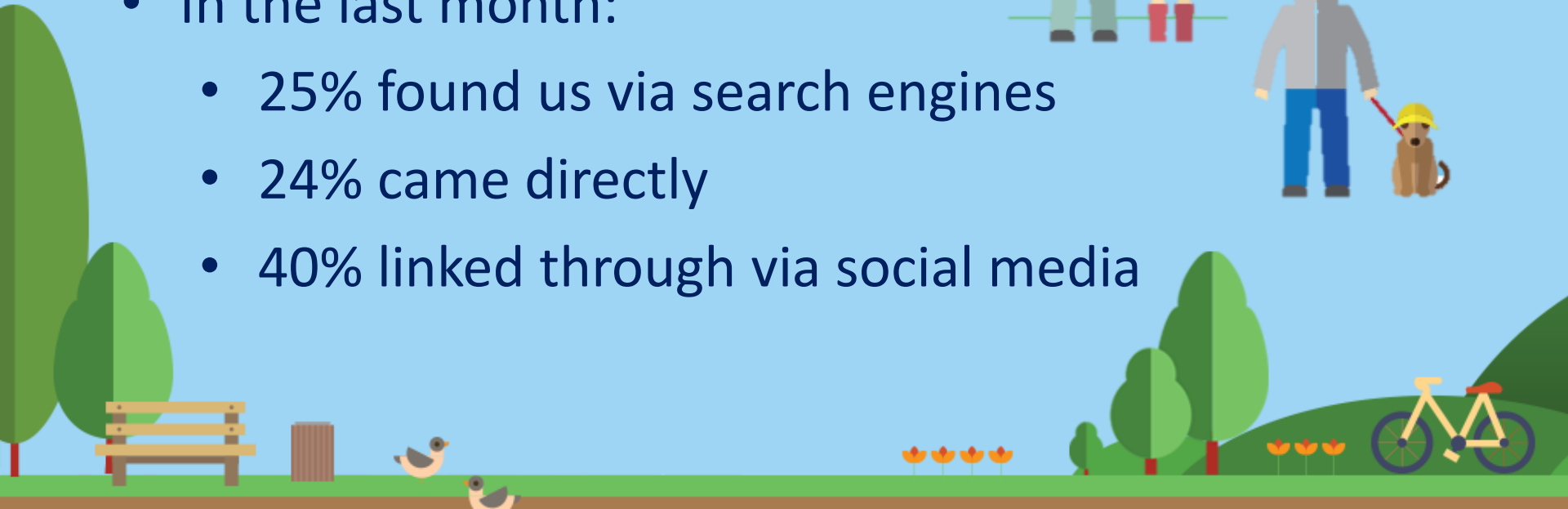
 www.parksherts.co.uk  [@ParksHerts](https://twitter.com/ParksHerts)  [ParksHerts](https://facebook.com/ParksHerts)  [ParksHerts](https://instagram.com/ParksHerts)

With over a hundred parks and open spaces in the county, there is so much more to see in Hertfordshire. You can search ParksHerts to find a great day out based on who's going, what activities you'd like and the facilities on offer. So, get searching and find your new favourite!



User Statistics

- In our first 6 months:
 - 6,200 unique users
 - 8,500 sessions
 - 30,000 page views
- In the last month:
 - 25% found us via search engines
 - 24% came directly
 - 40% linked through via social media



Social Media

- Used twitter, facebook and instagram
- Biggest reach from trending #'s e.g. Monday Motivation, Tip Tuesday
- Can link visitor numbers to particular tweets/retweets
- Blog Posts



ParksHerts
@ParksHerts

New Year, new you. What are you waiting for?
Get ready, get set and go with [#ParksHerts](#)
[#WellnessWednesday](#)



ParksHerts
@ParksHerts

A study has shown that for people living in urban areas exposure to trees, the sky and birdsong is beneficial for mental wellbeing. Find your nearest park or open space with [#ParksHerts](#) [#WednesdayWisdom](#) [#WellnessWednesday](#) [inews.co.uk/news/health/ur...](https://www.inews.co.uk/news/health/ur...)



ParksHerts
@ParksHerts

Find out about health walks taking place with you with [#ParksHerts](#) [#TipTuesday](#) [parksHerts.co.uk/c/events/tags/...](https://www.parksHerts.co.uk/c/events/tags/...)



ParksHerts
@ParksHerts

Our big launch last Friday at Cassiobury Park: [@PSimey](#) [@WatfordCouncil](#) [@HertsmereBC](#) [@GreenFlagAward](#) [@CassioburyFOCP](#) [@cfpukteam](#) [#watford](#)



ParksHerts
@ParksHerts

It's Friday! Why not visit one of our parks or open spaces for some [#FridayFun](#) [#ParksHerts](#)





ParksHerts

...

Published by Twitter [?] · January 1 at 8:55am · 🌐

Ten parks across Hertfordshire will be kickstarting 2018 by hosting a 5k parkrun on New Year's Day. Start times may vary on New Year's Day, please check times at <https://t.co/pc2fK0z4jP>



parkrun UK

parkrun organise free, weekly, 5km timed runs around the world. They are open to everyone, free, and are safe and easy to take part in.

PARKRUN.ORG.UK



ParksHerts

11 November 2017 · 🌐

You'll find lots of free and fun family days out in Hertfordshire with [#ParksHerts!](#) [#SocialSaturday](#) <https://t.co/d9L6AOgMjZ>



ParksHerts - off the phones!

-- Created using PowToon -- Free sign up at <http://www.powtoon.com/youtube/> -- Create animated videos and animated presentations for free. PowToon is a free ...

YOUTUBE.COM

1 Share



Like



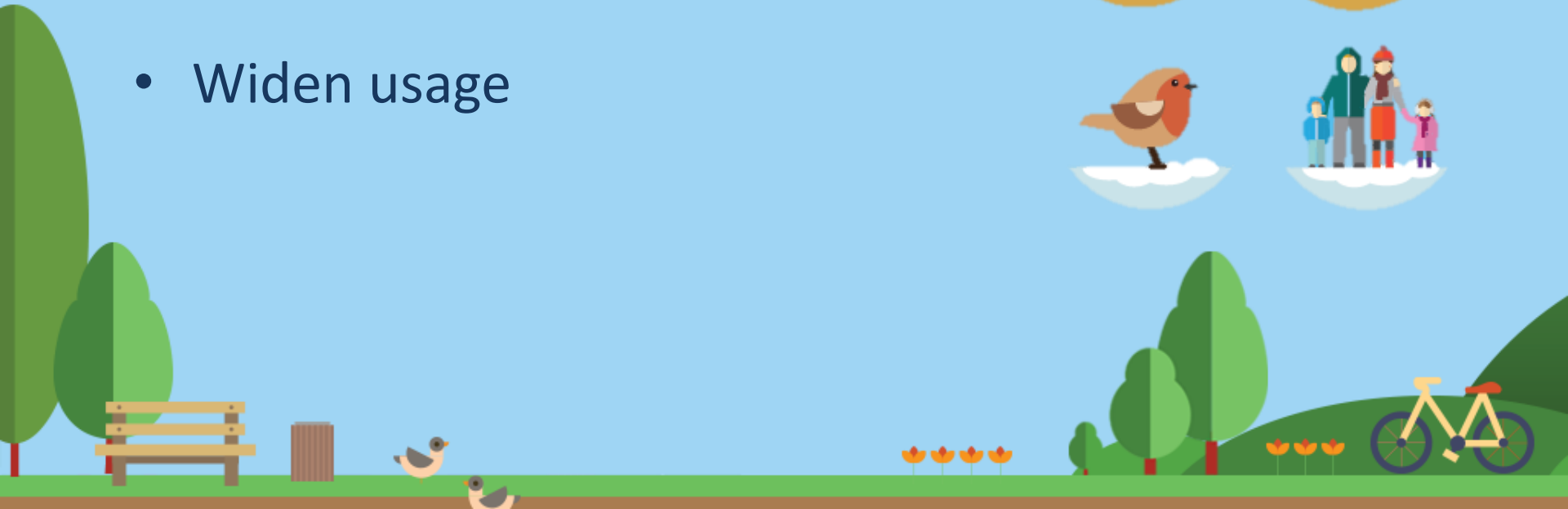
Comment



Share

Next Steps

- Keep going and keep growing
- Governance
- Widen usage





www.parksherts.co.uk



@ParksHerts



ParksHerts



ParksHerts

