

The Beautiful Burial Ground

Harriet Carty
Caring for God's Acre

*I like that ancient Saxon phrase, which calls
The burial ground God's Acre!*

Henry Wadsworth Longfellow



Protecting Wildlife, Preserving Heritage, Involving People



Protecting Wildlife





@ Eric Kaiser



@northeastwildlife.co.uk







@ Frank Dobson British Lichen Society



@ Chris Dresh







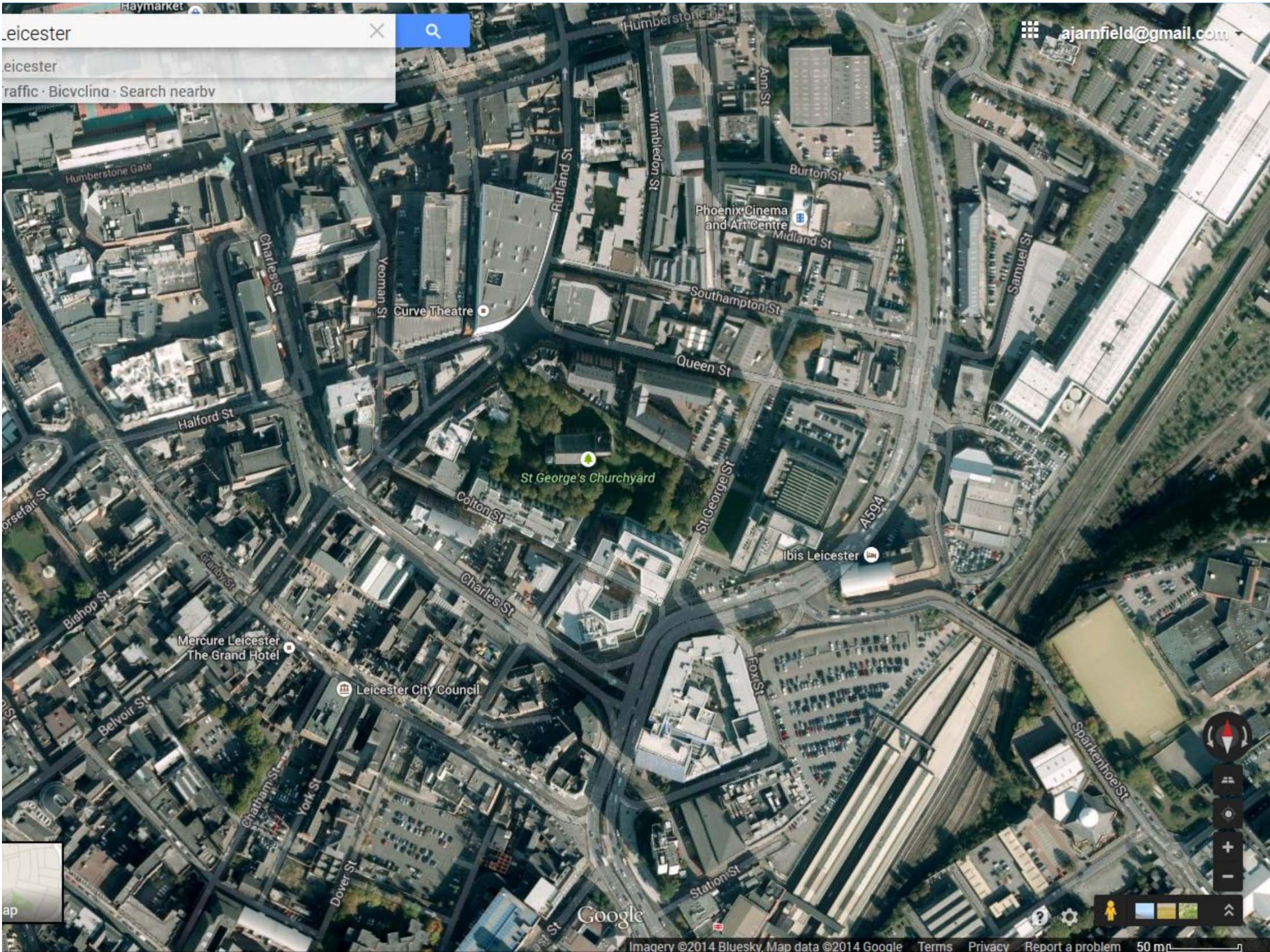
@ I Seccombe Butterfly Conservation











Leicester

ajarnfield@gmail.com

St George's Churchyard

Phoenix Cinema and Art Centre

Curve Theatre

Ibis Leicester

Mercure Leicester The Grand Hotel

Leicester City Council

Preserving Heritage















Holistic places





Involving People



Beautiful Burial Ground Week











PROTECTING WILDLIFE
PRESERVING HERITAGE
INVOLVING PEOPLE

Churchyard and Burial Ground Action Pack

Create a haven for wildlife,
for heritage, for people



Contents



Section A

MANAGING CHURCHYARDS AND BURIAL GROUNDS

- 1 The Five Steps to Churchyard and Burial Ground Care
- 2 Caring for Grassland
- 3 Cutting Long Grass and Dealing with Grass Cuttings
- 4 Inspecting and Caring for Trees
- 5 Yews and Other Veteran Trees
- 6 Practical Management of Trees and Shrubs
- 7 Caring for Hedgerows
- 8 Helping Wildlife
- 9 Pesky Plants and Animals
- 10 Caring for Stonework, Metalwork and Woodwork
- 11 Caring for Stone Walls

Section C

BURIAL GROUNDS THROUGH TIME

- 1 Archaeology and Historic Built Features
- 2 History, Folklore and Traditions
- 3 Geology of the Stones

Section D

INVOLVING PEOPLE

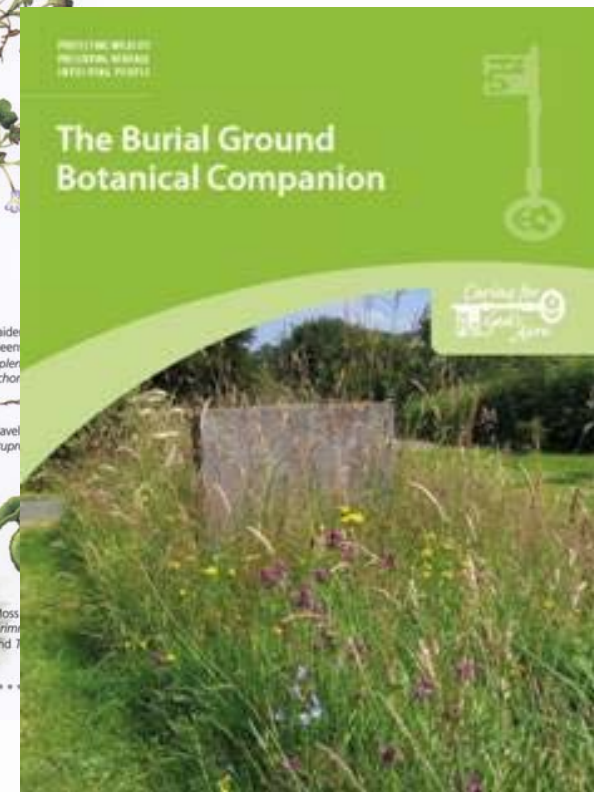
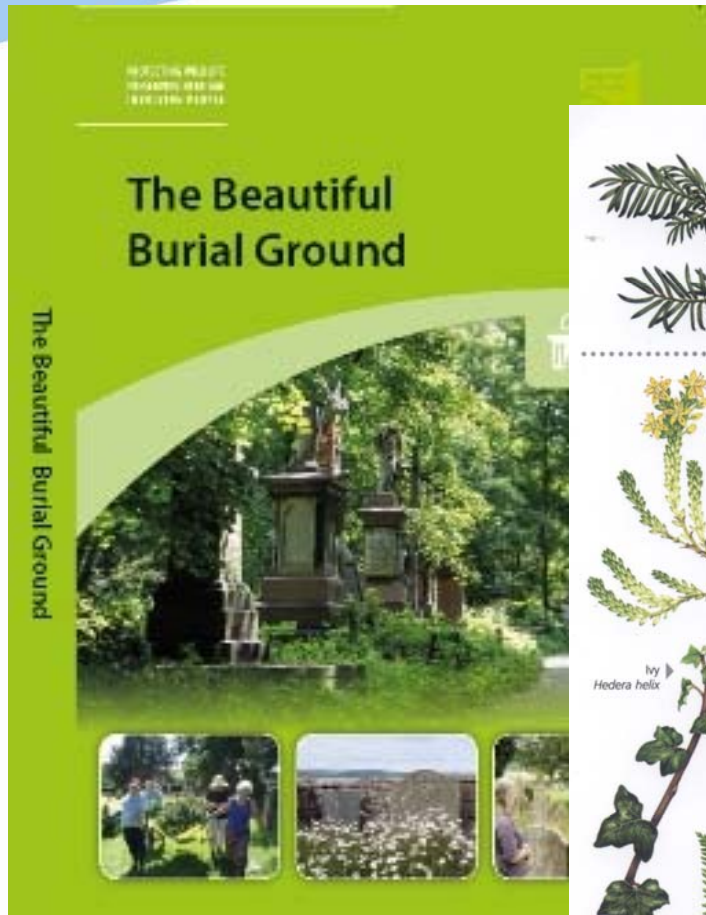
- 1 Involving Volunteers
- 2 Health and Safety
- 3 Recreation and Learning – Things to Do
- 4 Telling the Story – Interpretation
- 5 Applying for Grants
- 6 Sustainability

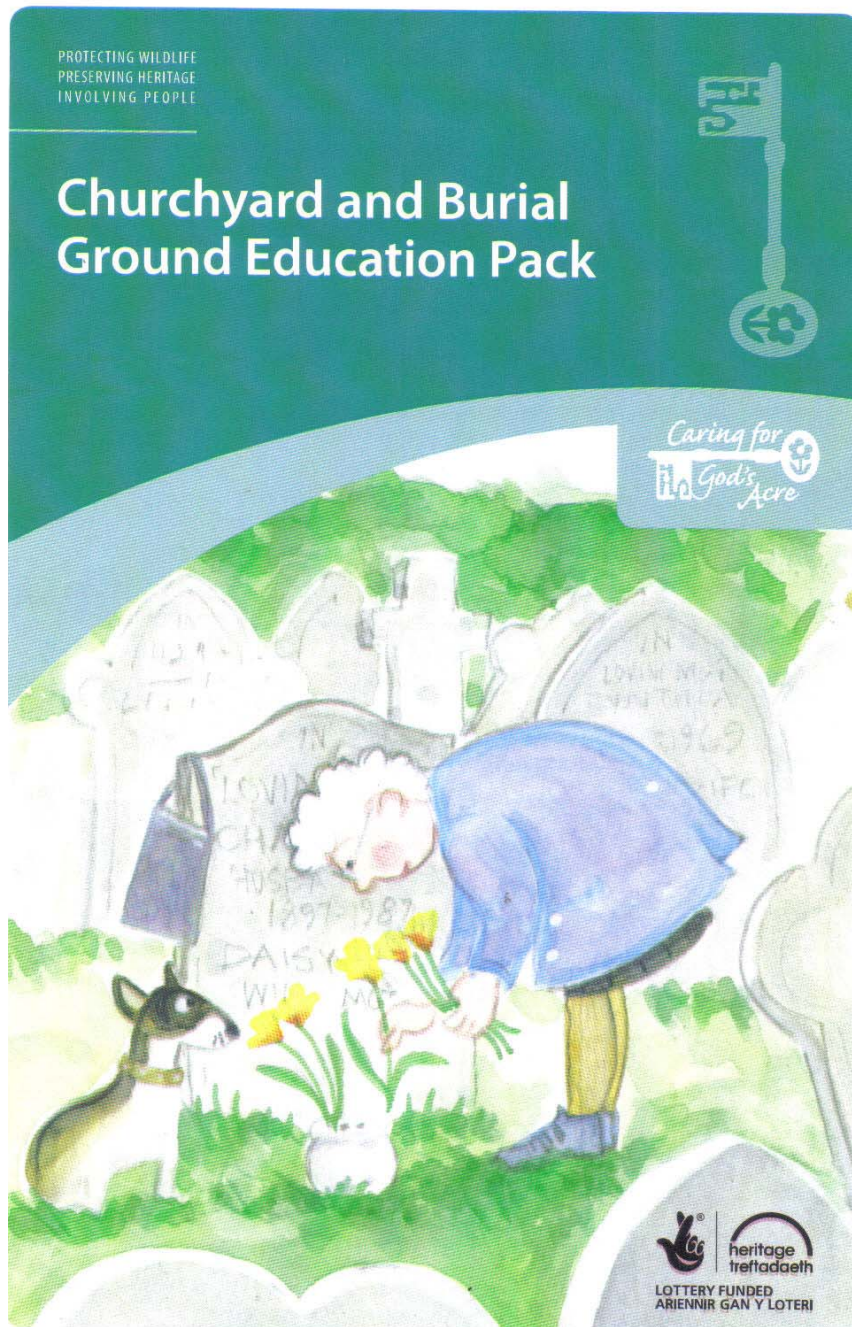
Section B

HAVENS FOR WILDLIFE

- 1 Slow Worms and Other Reptiles and Amphibians
- 2 Hedgehogs and Other Mammals
- 3 Bats in the Belfry
- 4 Swifts and Other Birds
- 5 Bumblebees and Other Bees, Wasps and Ants
- 6 Butterflies, Moths and Other Insects
- 7 Learn about Lichens
- 8 Wonderful Waxcaps and Other Fungi
- 9 Mosses, Liverworts and Ferns
- 10 Surveying for Plants and Animals
- 11 Burial Sites Across Britain

USEFUL CONTACTS





The Education Pack has five topics

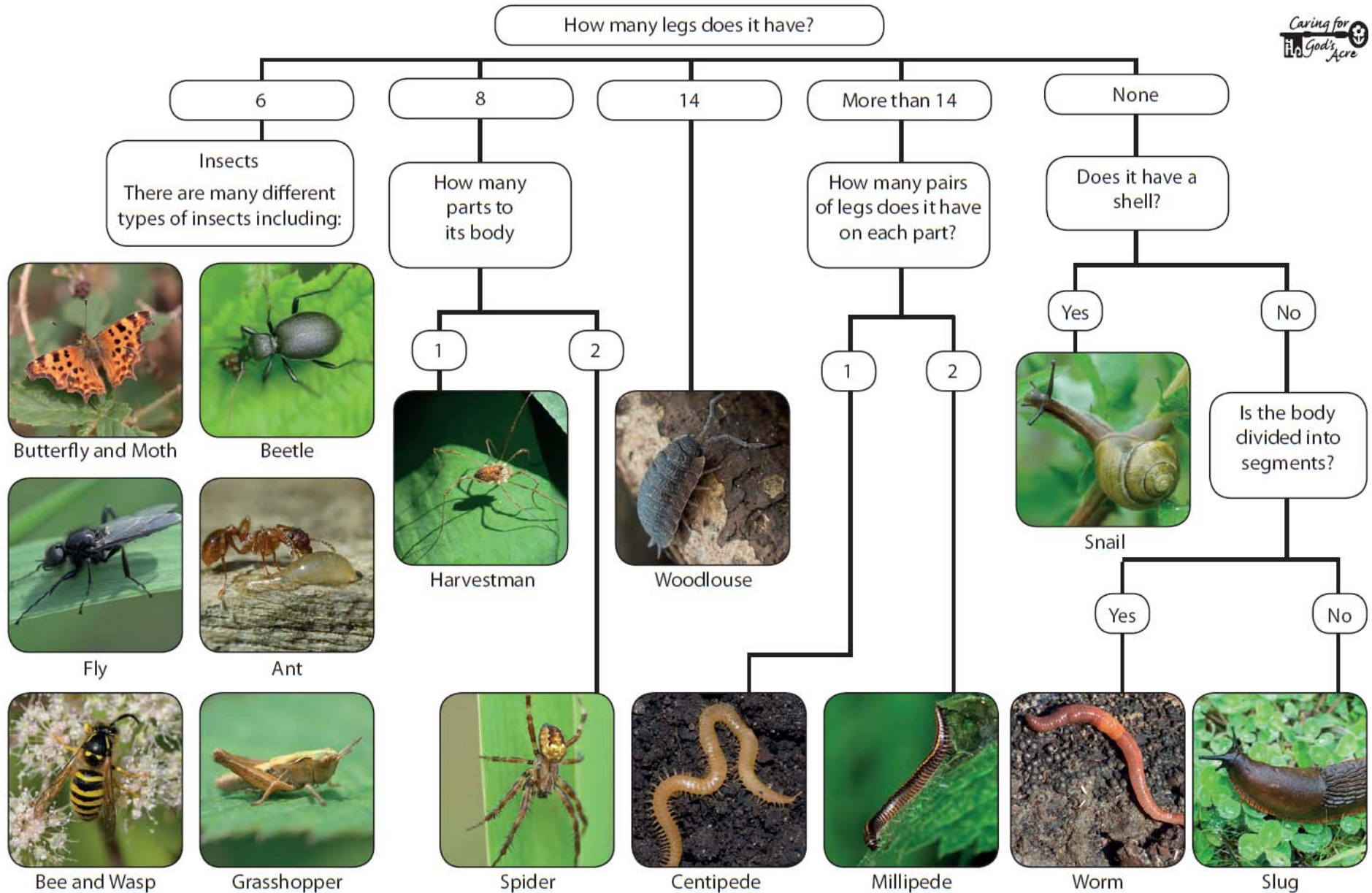
- *Precious Places*
- *What's the Story?*
- *Marvellous Monuments*
- *Wildlife Safari*
- *Art and Architecture*

For learning in:

*Key Stage 1 and 2,
Early Years Foundation Stage*

Activities for scouting groups

Minibeast Identification Key



The Beautiful Burial Ground

- Project to create and populate a burial ground data system giving the holistic picture of the wealth of these amazing places
- Four year project across England and Wales



LOTTERY FUNDED
ARIENNIR GAN Y LOTERI

Encourage recording by existing groups and enthusiasts



Encourage people to have a go and
take the first steps in recording



longden road cemetery : X

Secure | https://www.google.co.uk/search?q=longden+road+cemetery+shrewsbury&rlz=1C1AWUA_enGB739

Google

longden road cemetery shrewsbury

All Maps News Images Shopping More Settings Tools

About 38,700 results (0.76 seconds)



Shrewsbury Cemetery, Shrewsbury

Longden Road Cemetery – Shropshire Council

<https://www.shropshire.gov.uk/bereavement.../cemeteries-and.../longden-road-cemete...>
Find out more about Longden Road Cemetery in Shrewsbury. ... Longden Road Cemetery covers an area of around 30 acres, and is comprised of two distinct ...

Longden Road Cemetery, Shrewsbury | Crematoria & Cemeteries - Yell

<https://www.yell.com> > Shrewsbury > Crematoria & Cemeteries
Find Longden Road Cemetery in Shrewsbury, SY3. Get contact details, videos, photos, opening times and map directions. Search for local Crematoria ...

Longden Road Cemetery, Shrewsbury - Caring for God's Acre

www.caringforgodsacre.org.uk/...us.../196-longden-road-cemetery-shrewsbury.html
Friends of Longden Road cemetery in Shrewsbury, supported by Caring for God's Acre's Churchyard Task Team, are inviting local people to help with essential ...

Grassland management; Longden Road Cemetery, Shrewsbury ...

www.caringforgodsacre.org.uk/.../longden-road-cemetery-shrewsbury-shropshire.htm...
Longden Road sml, A grassland management plan using the system of grassland survey described in the Caring for God's Acre 'The Burial Ground Botanical ...

Longden Road Cemetery Shrewsbury SY3 7HS, Cemetery - MisterWhat

<https://www.misterwhat.co.uk/company/1752371-longden-road-cemetery-shrewsbury>
Longden Road Cemetery in Shrewsbury SY3 7HS - Company Profile, Phone Number, Address, Postcode, Map and more.

Shrewsbury Cemetery Burial Plot Map | Shropshire Family History ...

www.sfhs.org.uk > ... > General Discussion > Shropshire Family History Discussion
12 Sep 2012 - 8 posts - 4 authors
The Shrewsbury Cemetery in Longden Road, Shrewsbury is in two distinct parts - the older part behind the Chapel where all the roads are laid ...

Longden Road Cemetery covers an area of around 30 acres, and is comprised of two distinct sections: the old section, in which the chapel buildings are situated, characterised by sweeping curved pathways, and the new section, characterised by its straight roads and rectangular layout.

The cemetery was consecrated in November 1856, and the first burial took place in December of that year. As a municipal, general cemetery, it's the oldest of its type in Shropshire. New burials continue to take place in both the old and new sections of the cemetery, but most new burials at Emstrey now take place at the cemetery adjacent to the crematorium.

There are also rural cemeteries at five village locations around Shrewsbury (Alberbury, Church Pulverbatch, Great Ness, Minsterley and Westbury). These provide burial space and cremated remains plots to serve those communities.

Dignity Funerals Ltd administer cemeteries on our behalf, and can be contacted on 01743 237900 for further information.

If you wish to find a particular grave, layouts of the cemetery can be found at the entrances. As a general rule, if you have a grave reference comprising two parts, eg ext 5 - 45, that would be in the new part of the cemetery. If you have a grave reference comprising three parts eg 106 - 10 - B, that would be found in the old part of the cemetery.

The cemetery is open all year round and you're welcome to visit the cemetery during the hours it's open, whether to visit a grave, carry out family history/historical research, or just enjoy the peaceful setting.

The cemetery is open to the public every day of the year during the following times:

- 8am - 5pm during November to end of February
- 8am - 8pm during April to end of September
- 8am - 7pm during October

The opening times change when the clocks go forward or back.

Use the following documents to find out more information relating to the cemetery:

- [A plan of the whole cemetery](#)
- [A plan of the old section of the cemetery](#)
- [Our Lawn Graves Regulations 2008](#) (these regulations apply in the lawn grave areas of the new section)
- [The policy for tributes on shared graves and further information](#)

If you'd like to become involved with the cemetery, its grounds or buildings, a Friends of Longden Road Cemetery group has been established. You can find out further information on their Facebook site.

Related documents

[Lawn graves regulations.pdf](#)

[Longden Road Cemetery plan.pdf](#)

[Longden Road Cemetery plan - old section.jpg](#)

[Non-floral tributes on shared graves policy.pdf](#)

You are here: [Home](#) > > [Gateway Results](#) > [Shropshire HER Results](#) > Shropshire HER Result

select...

< Back to Shropshire HER Results

<< Back to Gateway results

Refine your search

Start new search

Help and FAQs

Cookies



Shropshire HER



HER Number (PRN): 10347

Name: Shrewsbury General Cemetery Buildings, LONGDEN ROAD, Shrewsbury

Type of Record: Building

Protected Status: Listed Building (II) 1270702: SHREWSBURY GENERAL CEMETERY BUILDINGS

Monument Types

- [CHAPEL](#) (dated 1856, Mid 19th century - 1837 AD to 1879 AD)
- [HOUSE](#) (dated 1856, Mid 19th century - 1837 AD to 1879 AD)

Summary

A cemetery chapel and associated buildings, dated 1856, which are protected by Grade II Listing.

Parish: Shrewsbury, Shrewsbury and Atcham, Shropshire

Map Sheet: SJ41SE

Grid Reference: SJ 4877 1138

Related records: None recorded

Associated Finds: None recorded

Associated Events: None recorded

Description

Cemetery buildings, comprising chapels and porte-cochere linked by a cloister, and 2 flanking lodge houses or offices. 1856. By Pountey Smith. Coursed and squared stone, the porte-cochere partially timbered, with plain tiled roofs. Decorated style. Chapels divided by central tower with spire: 3-stage tower, with paired bell-chamber lights, embattled parapet with corbel heads and pinnacles, and octagonal spire with 3 tiers of lucarnes. Chapel range of 7 bays divided by pilaster buttresses with truncated pinnacles. High plinth and 2-light Decorated windows over. 4-bay porch forming open-ended aisle, with similar windows. Large Decorated windows of 4 and 5 lights in end walls. Porte-cochere across the front is linked to the chapel range by narrow cloister range with paired lancet windows between buttresses. Porte-cochere is single-storeyed, divided into 3 bays by projecting buttresses each side of

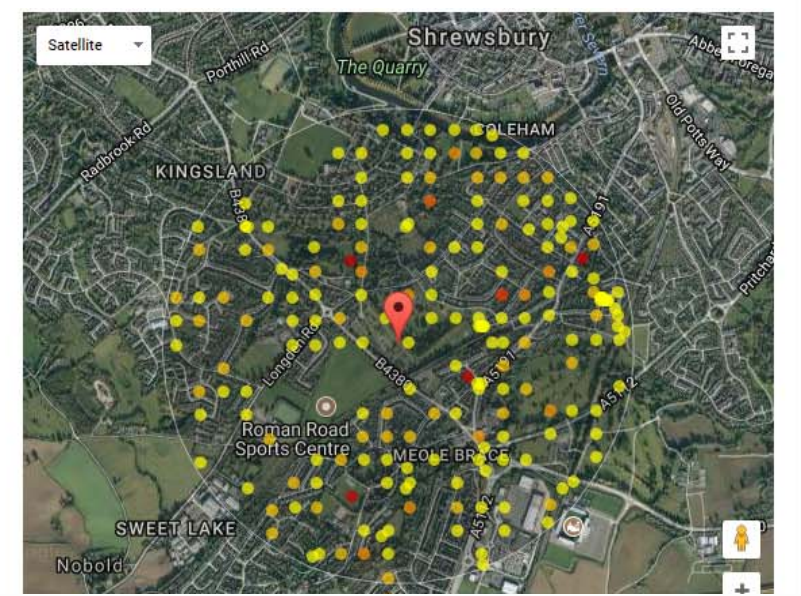
Explore Your Area

Enter your location or address:
 Search
 E.g. a street address, place name, postcode, GPS coordinates (as lat, long) or Ordnance survey grid reference

Showing records for: Roman Rd, Shrewsbury SY3, UK

Display records in a km radius

Group	Species	Species : Common Name	Records
All Species	1370	1. <i>Abraxas grossulariata</i> : Magpie	1
Animals	906	2. <i>Abraxas sylvata</i> : Clouded Magpie	2
Mammals	16	3. <i>Abrostola triplasia</i> : Dark Spectacle	4
Birds	78	4. <i>Acaena novae-zelandiae</i> : Pirri-Pirri-Bur	1
Reptiles	1	5. <i>Acanthis cabaret</i> : Lesser Redpoll	3
Amphibians	5	6. <i>Acanthosoma haemorrhoidale</i> : Hawthorn Shieldbug	8
Fish	14	7. <i>Accipiter nisus</i> : Sparrowhawk	146
Molluscs	1	8. <i>Acer campestre</i> : Field Maple	1
Arthropods	787	9. <i>Acer platanoides</i> : Norway Maple	1
Crustaceans	1	10. <i>Acer pseudoplatanus</i> : Sycamore	6
Insects	785	11. <i>Achillea millefolium</i> : Yarrow	6
Plants	447	12. <i>Acletoxenus formosus</i>	1
Bryophytes	16	13. <i>Acronicta aceris</i> : Sycamore	1
Gymnosperms	0	14. <i>Acronicta alni</i> : Alder Moth	8
FernsAndAllies	0	15. <i>Acronicta leporina</i> : Miller	2
Angiosperms	0	16. <i>Acronicta psi</i> : Grey Dagger	3
Monocots	0	17. <i>Acronicta rumicis</i> : Knotgrass	2
Dicots	0	18. <i>Actia crassicornis</i>	4
Fungi	17	19. <i>Actia pilipennis</i>	3



Search the Caring for God's Acre NBN Atlas to find species found in burial grounds near you

Search the NBN Atlas

SEARCH

Find a burial ground survey near you



Submit a Record



EXPLORE YOUR AREA
What's been recorded in your local burial ground?



ANALYSE DATA

Undertake your own analyses of Atlas data



THE CARING FOR GODS ACRE NBN ATLAS IS PART OF THE NATIONAL BIODIVERSITY NETWORK



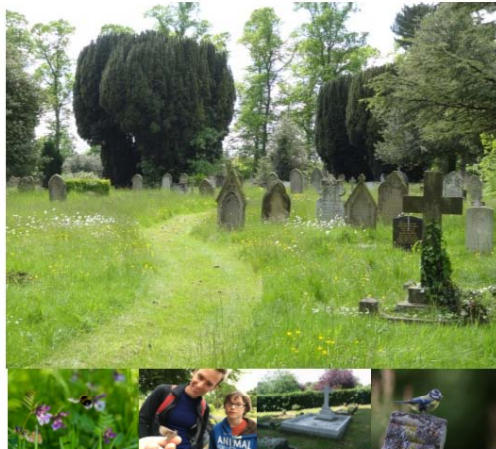
Year of the Burial Ground 2019

Training opportunities

Ancient and veteran trees

Longden Road Cemetery, Shrewsbury

Overview Gallery Datasets Church Heritage Record Church Heritage Cymru Caring for God's Acre



Analyse data View Map View records

Receive alerts when new records are added

Datasets

7 datasets have provided data for this burial ground.

Browse the list of Datasets and find organisations you can join if you are interested in participating in a survey of a burial ground.

Other Heritage Information

The Secrets of Shrewsbury Cemetery—book by Peter Francis Church Heritage Records [visit website](#)
 Commonwealth Graves Commission [visit website](#)
 'Find an Archive' service [visit website](#)
 Historic Environment Records (England) [visit website](#)
 Local Wildlife Site Status [visit website](#)
 Mary Webb Society [visit website](#)
 The Archaeological Data Service [visit website](#)
 War Memorials Online [visit website](#)

Ecological Survey

This site is designated a **Local Wildlife Site** as it contains old undisturbed grassland with many flowering plants in the sward. 110 grassland species were recorded in 2014. It is an excellent site for grassland fungi including waxcaps, with 42 species found in one visit in 2013.

Rare plants and invertebrates have been found including 'firsts' for the county.

There are many mature trees giving a variety of habitats and this is a good site for invertebrates, mammals and birds.

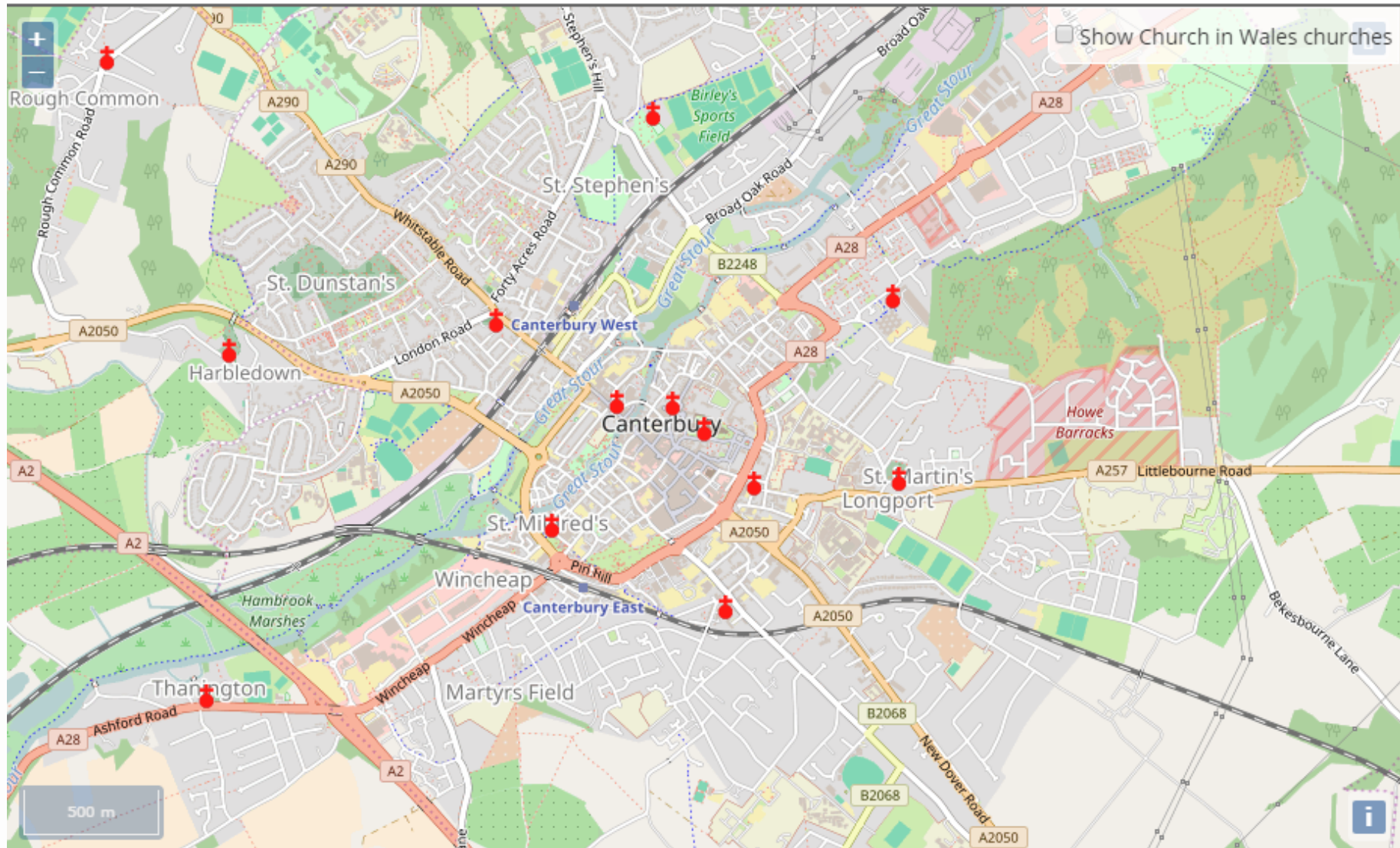
[Click here for a summary of the ecological features of this burial ground.](#)

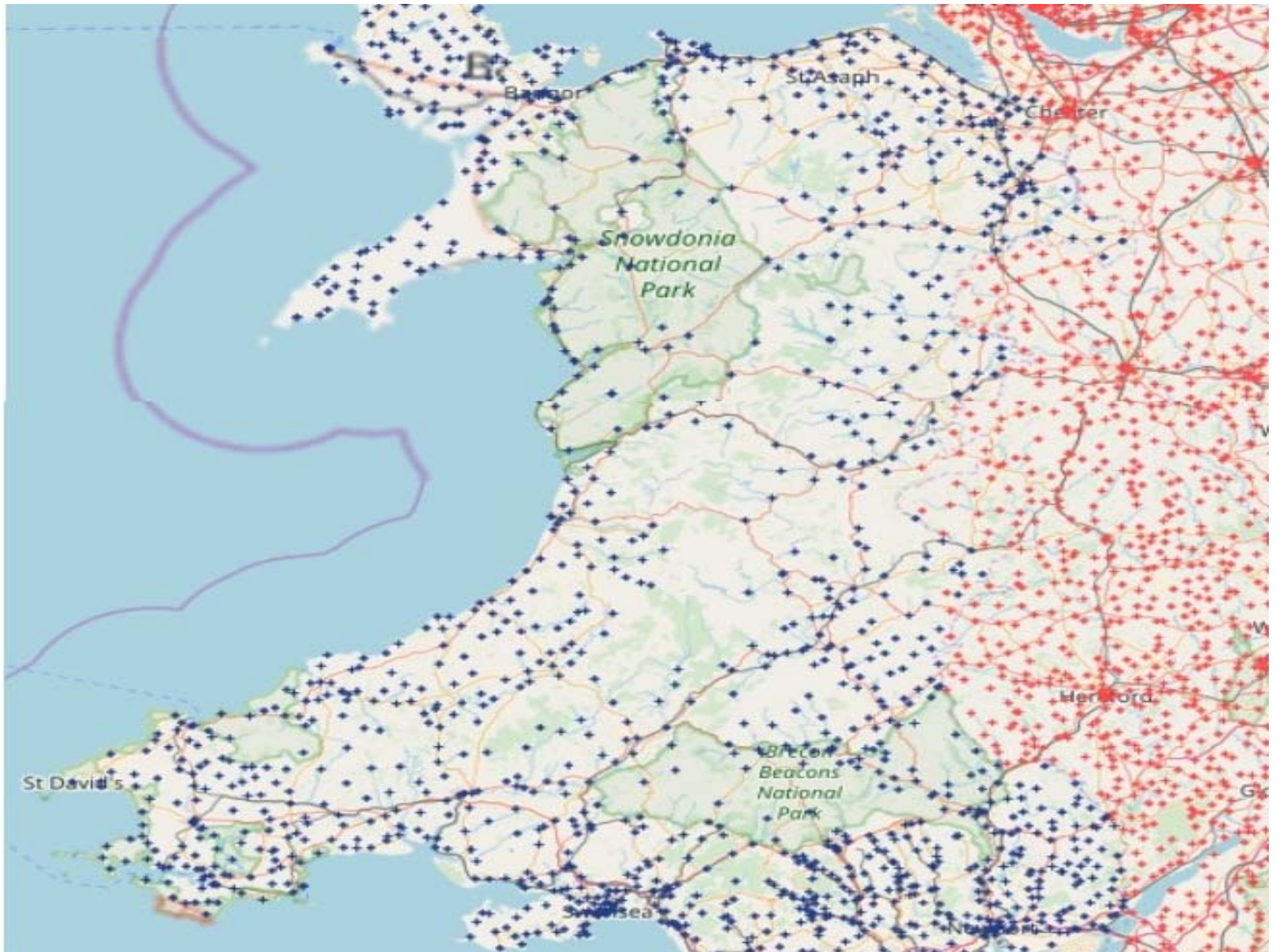
Ancient & Veteran Trees

There are no ancient or veteran trees in this site.

[Click here to see if a veteran tree has been recorded in this burial ground](#)

Church Heritage Record





Please get involved!

Wildlife surveying

Monument recording

Investigation in the archives

Georgina Sharp:

george@cfga.org.uk, 01588 673041

2020 Year of the Burial Ground

