

# State of the Market 2018

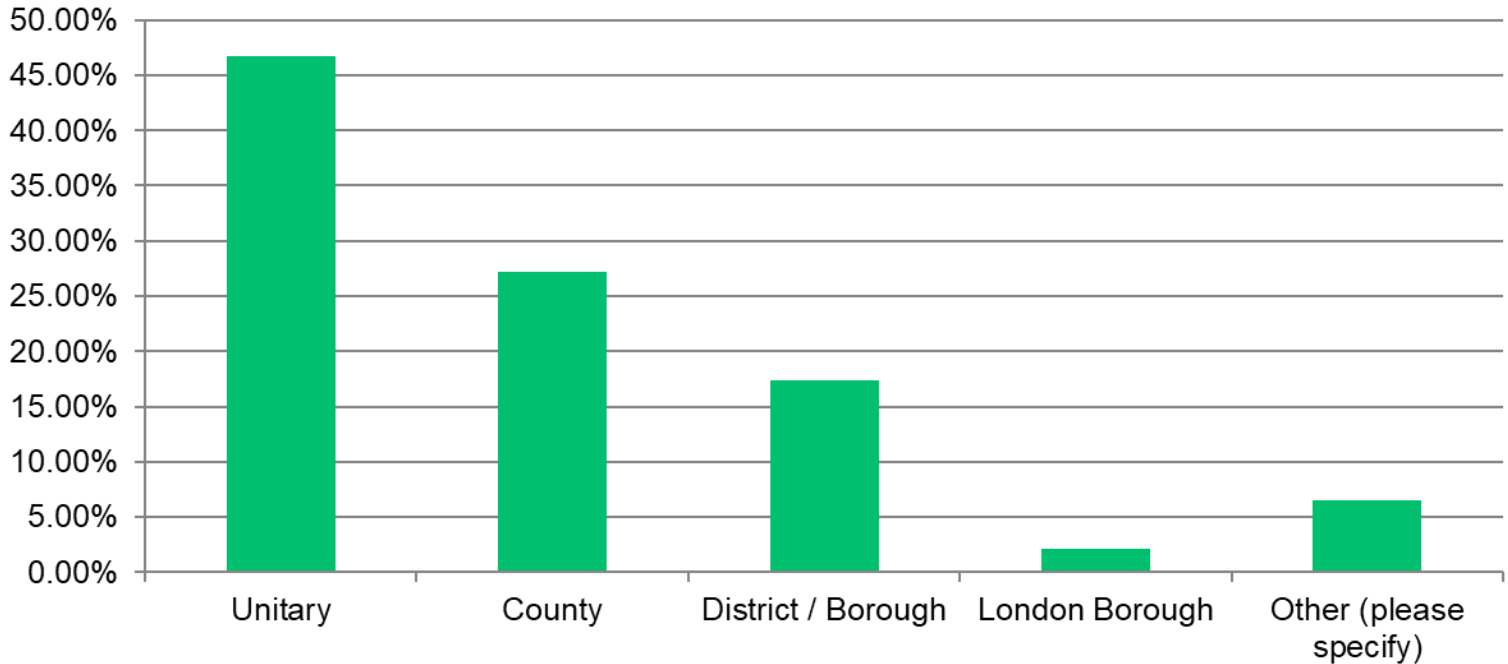
Highways

Street Lighting

Winter Maintenance

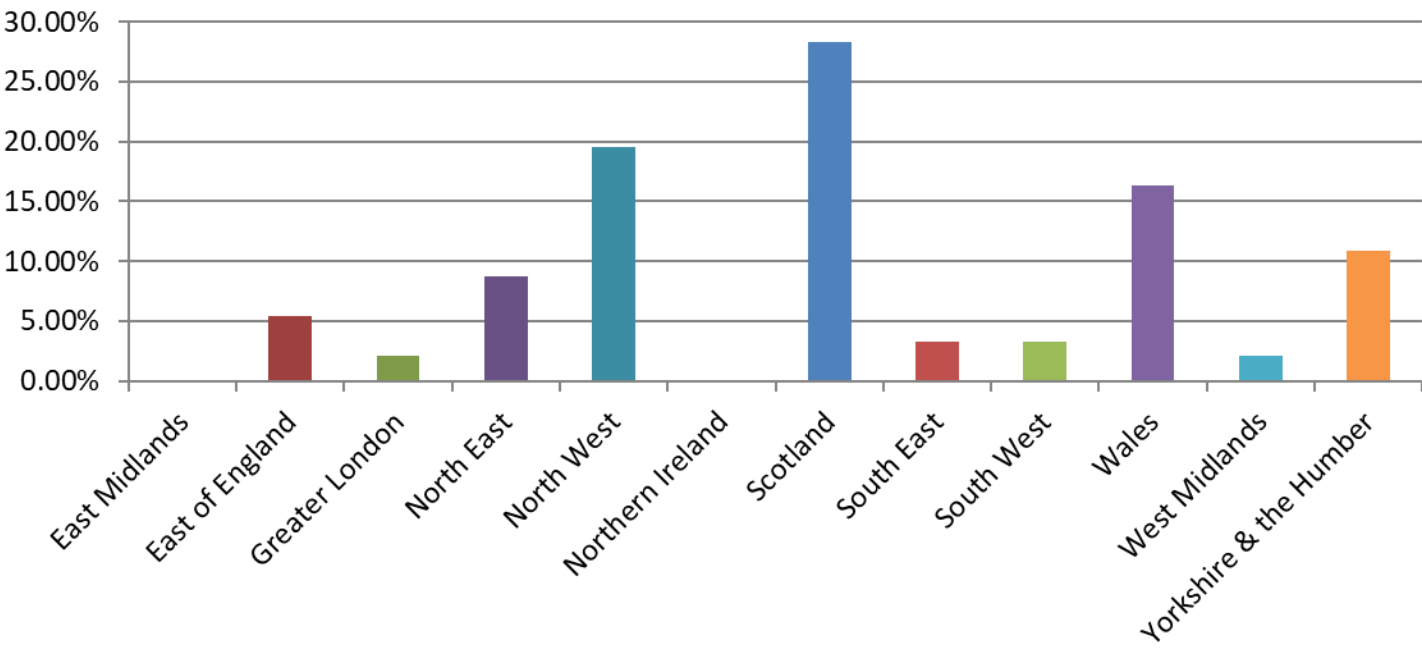


# What type of authority is your main employer / client?



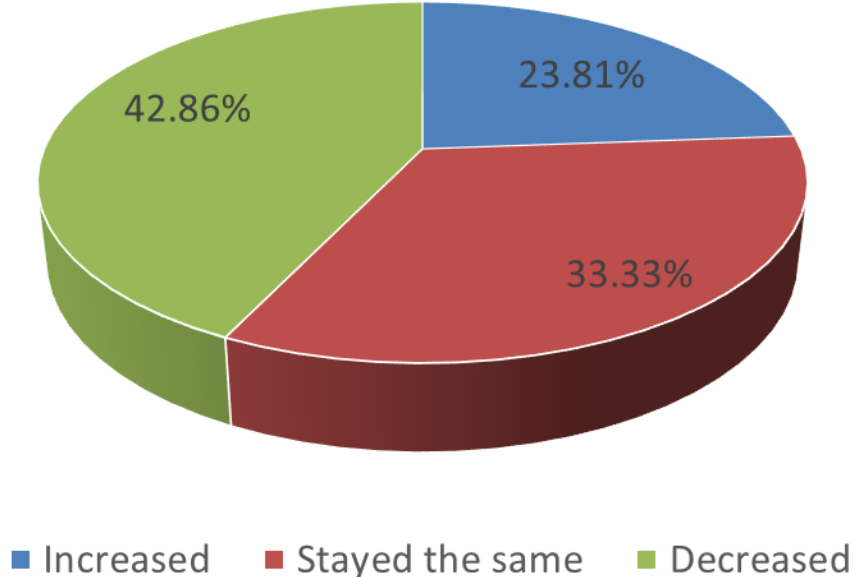


# Where in the UK do you work?



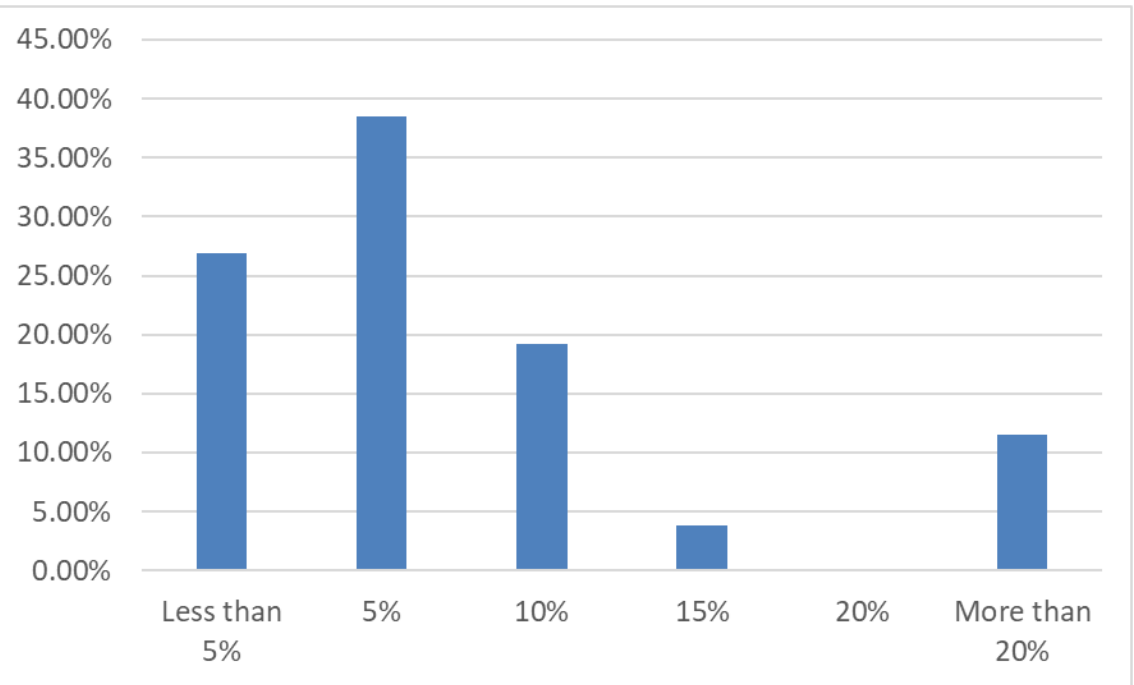


# How has the budget for the highways service changed from 2017-18 to 2018-19?



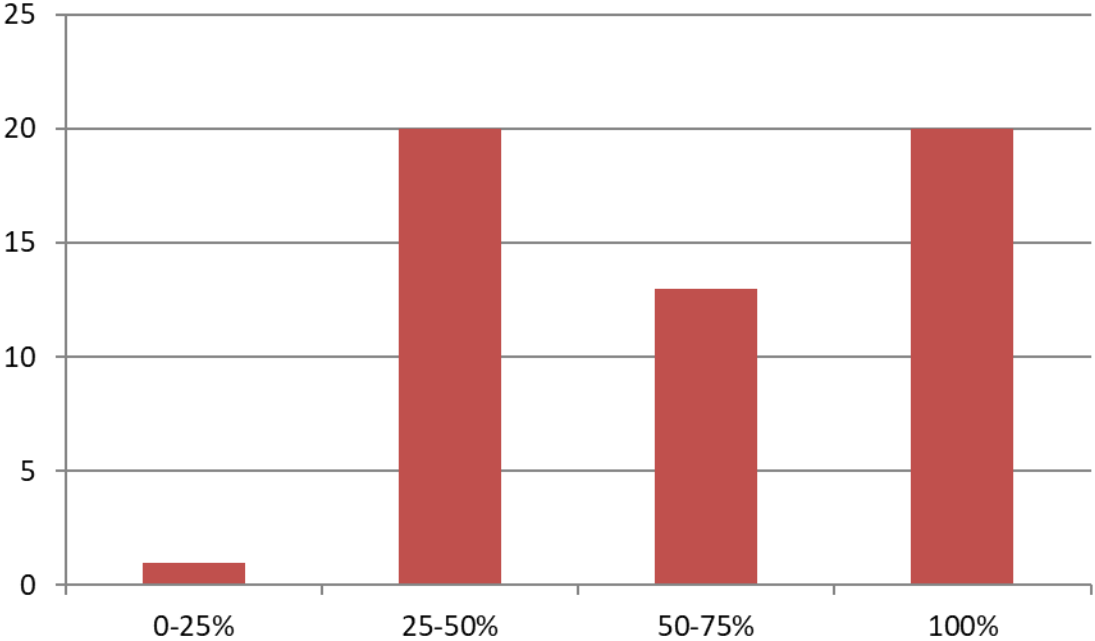


# If your budget has decreased from 2017-18 to 2018-19, how much has it decreased by?



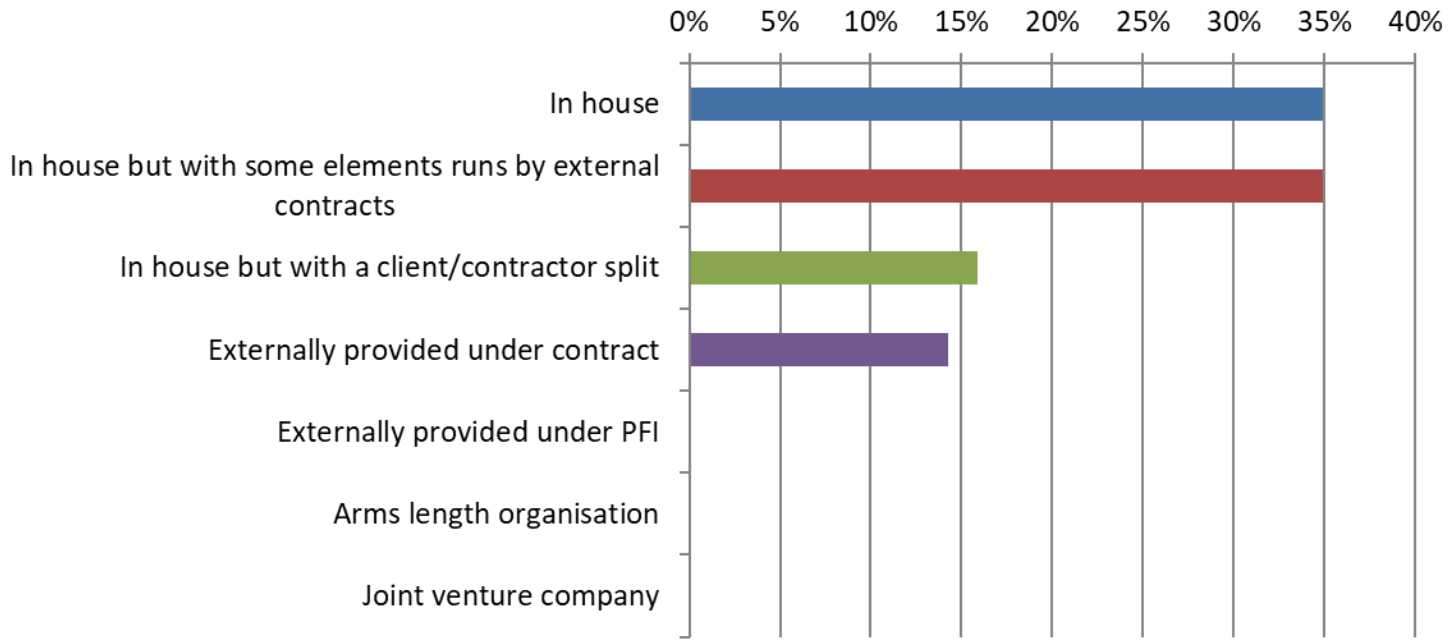


# To what extent will your 2018/19 budget for highways maintenance meet the need to fill potholes and resurface where necessary?



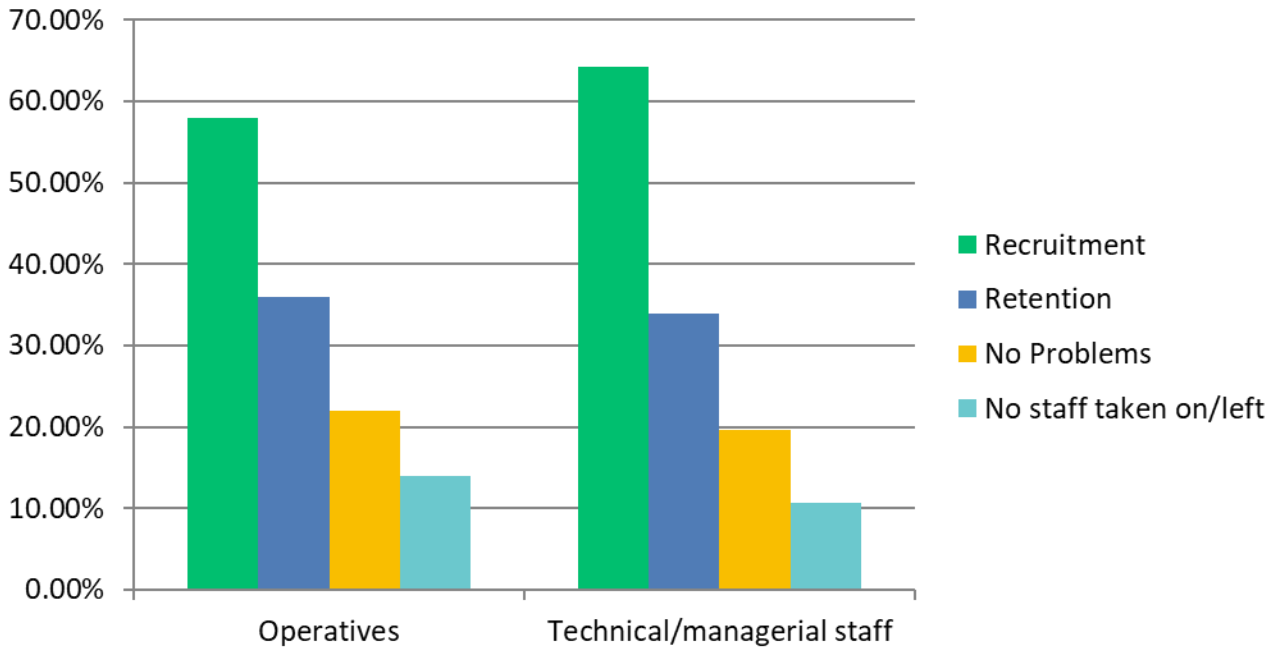


# How are your highways services currently delivered?





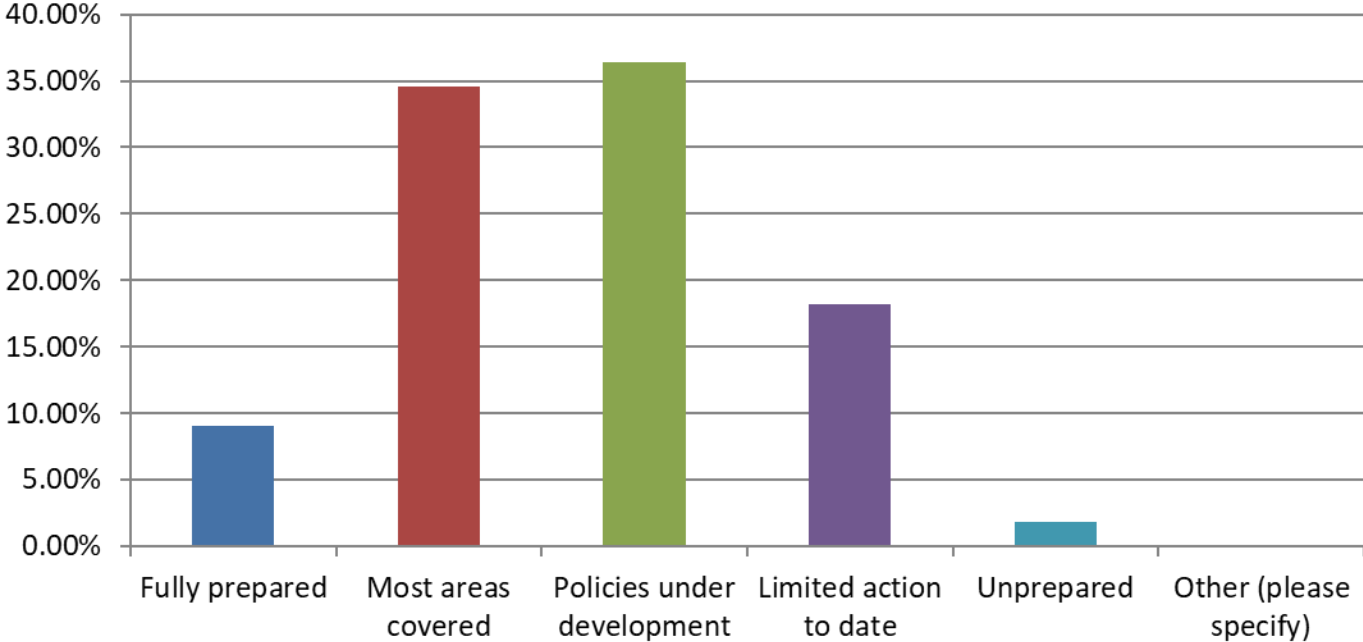
# Where have you had difficulty recruiting or retaining staff (over the past 12 months)





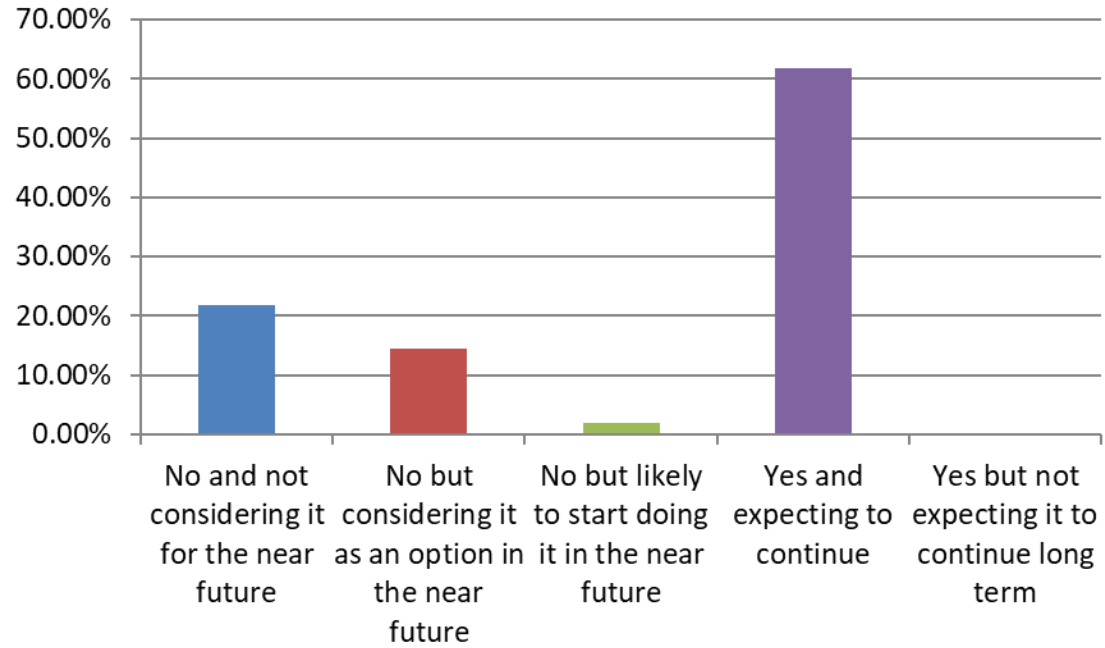


# How prepared are you for the introduction of the New Code of Practice "Well managed Highways infrastructure"?



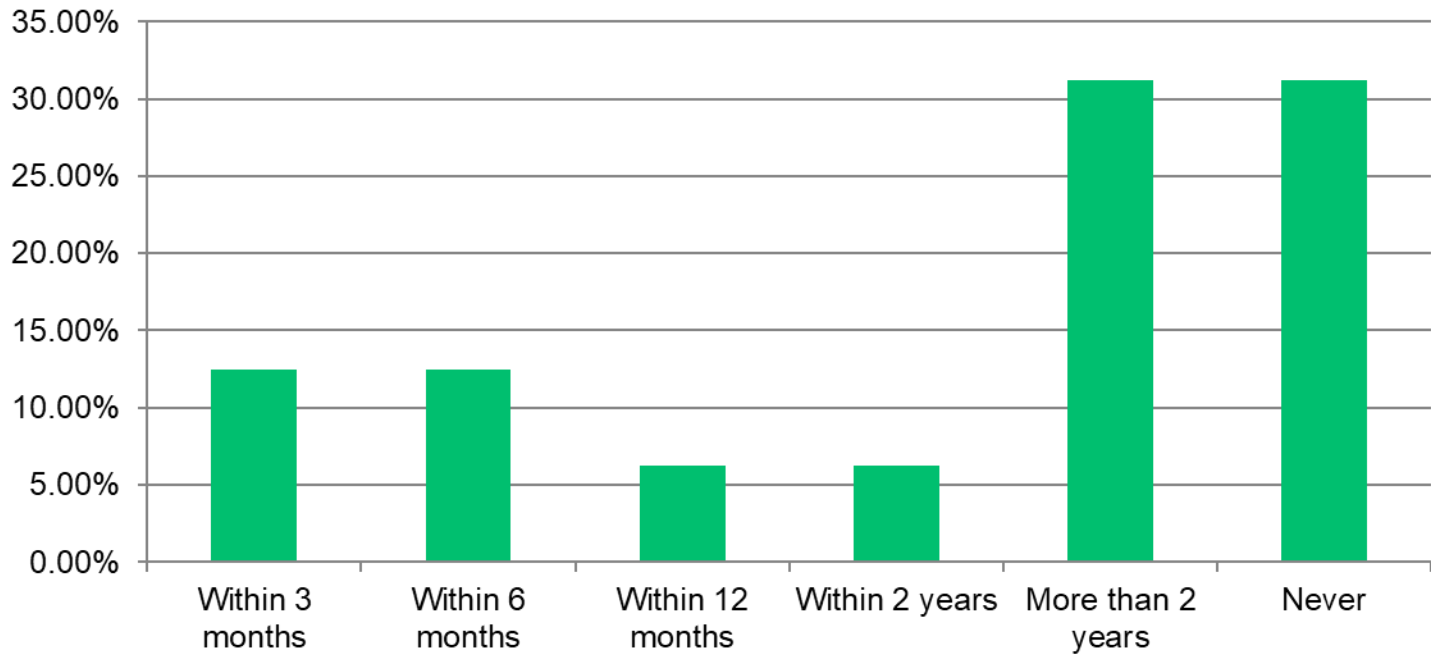


# Do you currently sell your services to organisations external to the council?





# When do you estimate the existing damage to roads in your council area will be repaired to an acceptable standard by?



## Innovation

- Geotextiles
- Plastics tarmac substitutes
- Camera condition surveys
- Velocity jet patching

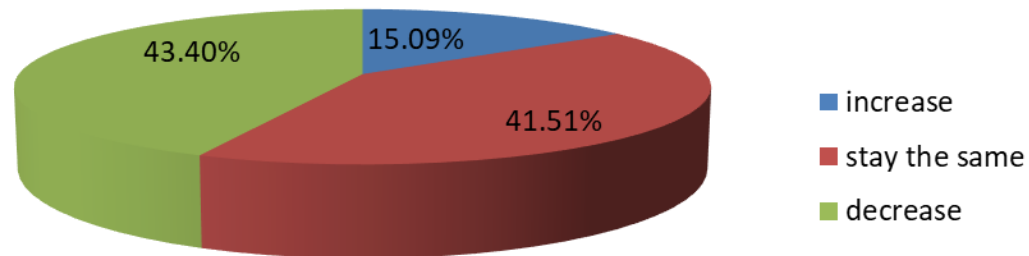
The logo for apse, featuring the word "apse" in white lowercase letters inside a purple oval shape.

apse

performance networks

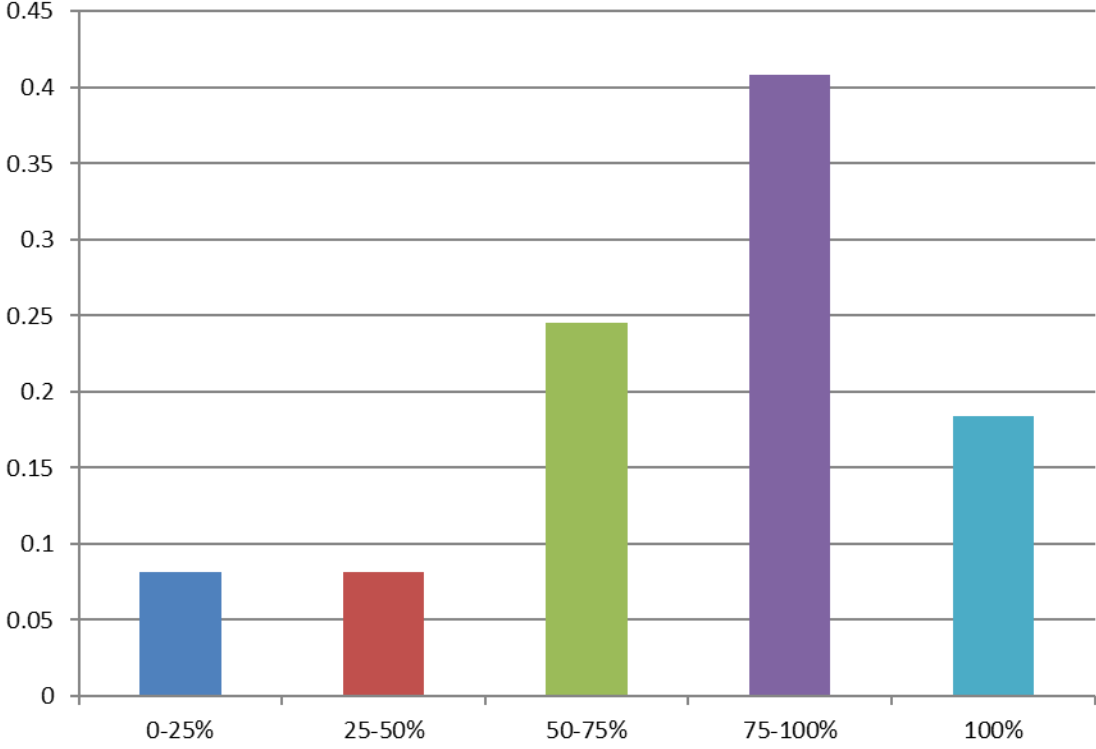
# Street Lighting

## How has the budget for the street lighting service changed from 2017-18 to 2018-19?



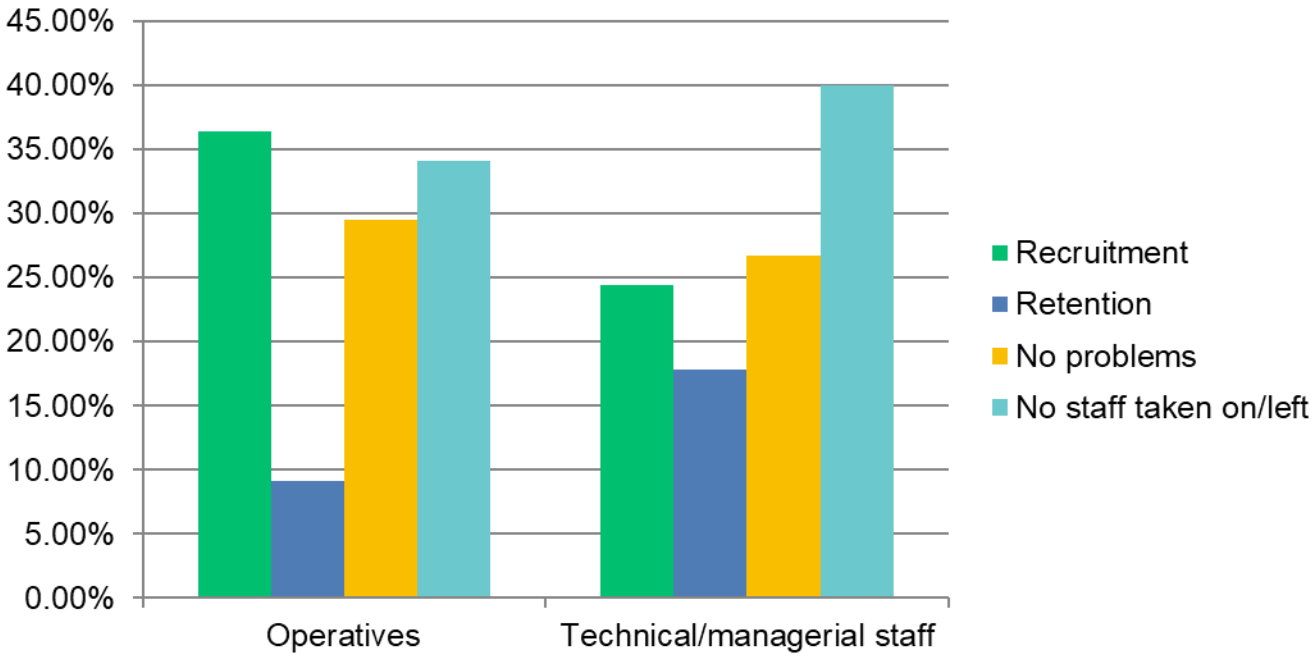


# To what extent will your 2018/19 budget for street lighting meet the need for maintenance/investment?





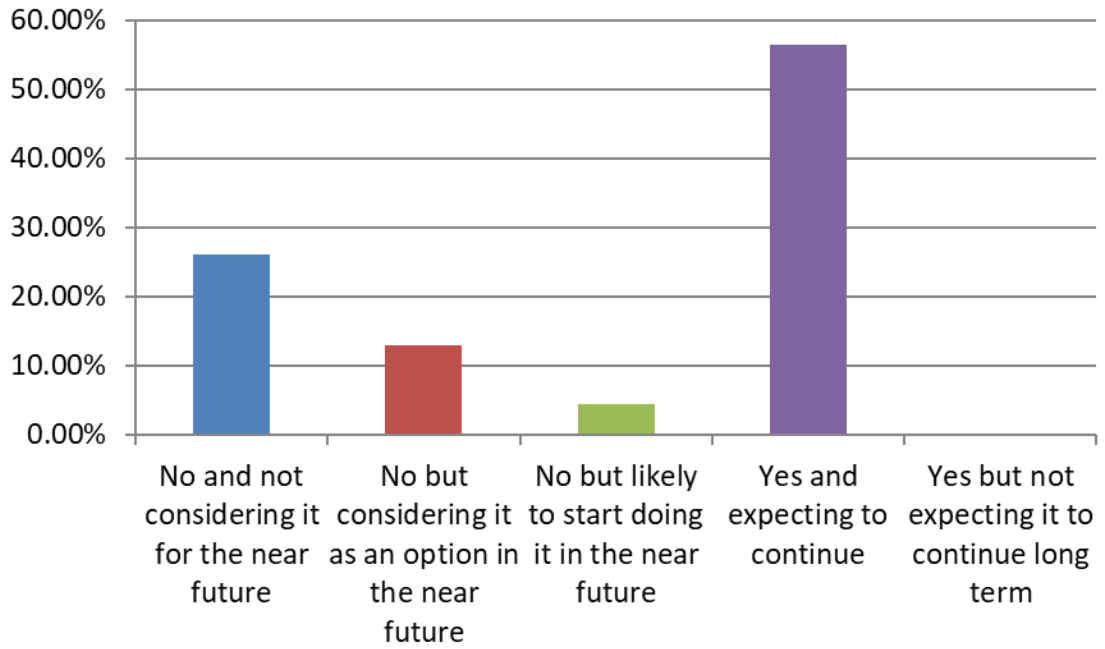
# Where have you had difficulty recruiting or retaining staff? (over the past 12 months)





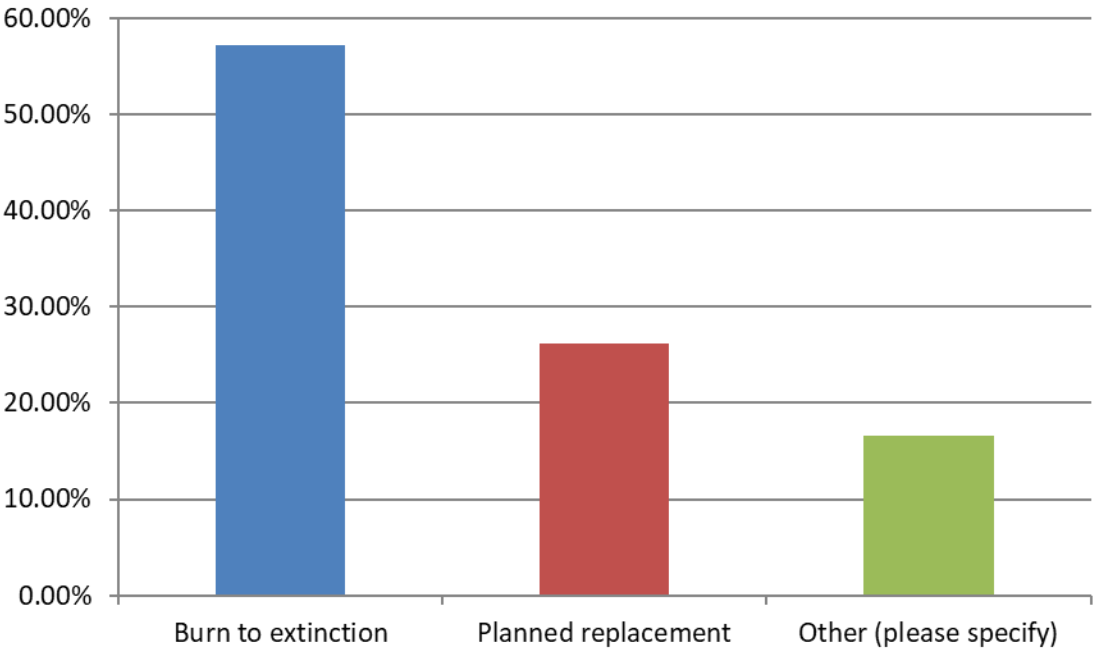


# Do you currently sell your services to organisations external to the council?



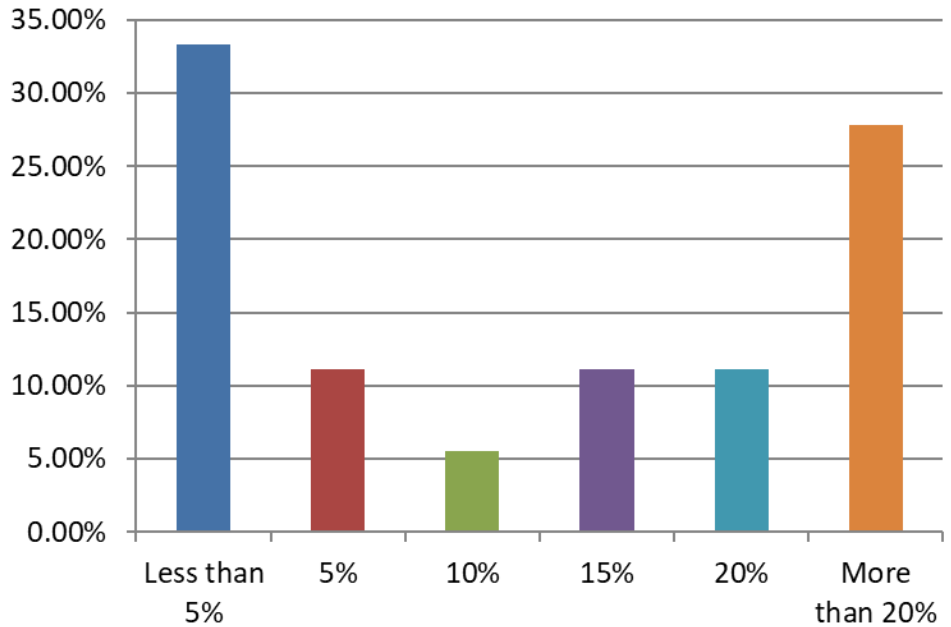


# What is your council's approach to lamp replacement within your street lights?



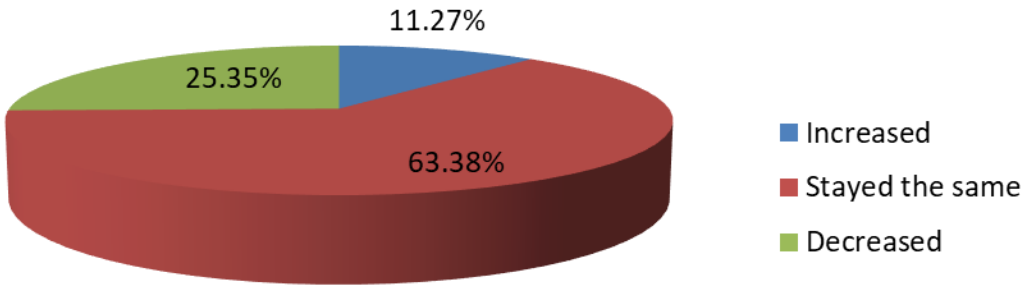


# If your budget has decreased from 2017-18 to 2018-19, how much has it decreased by?



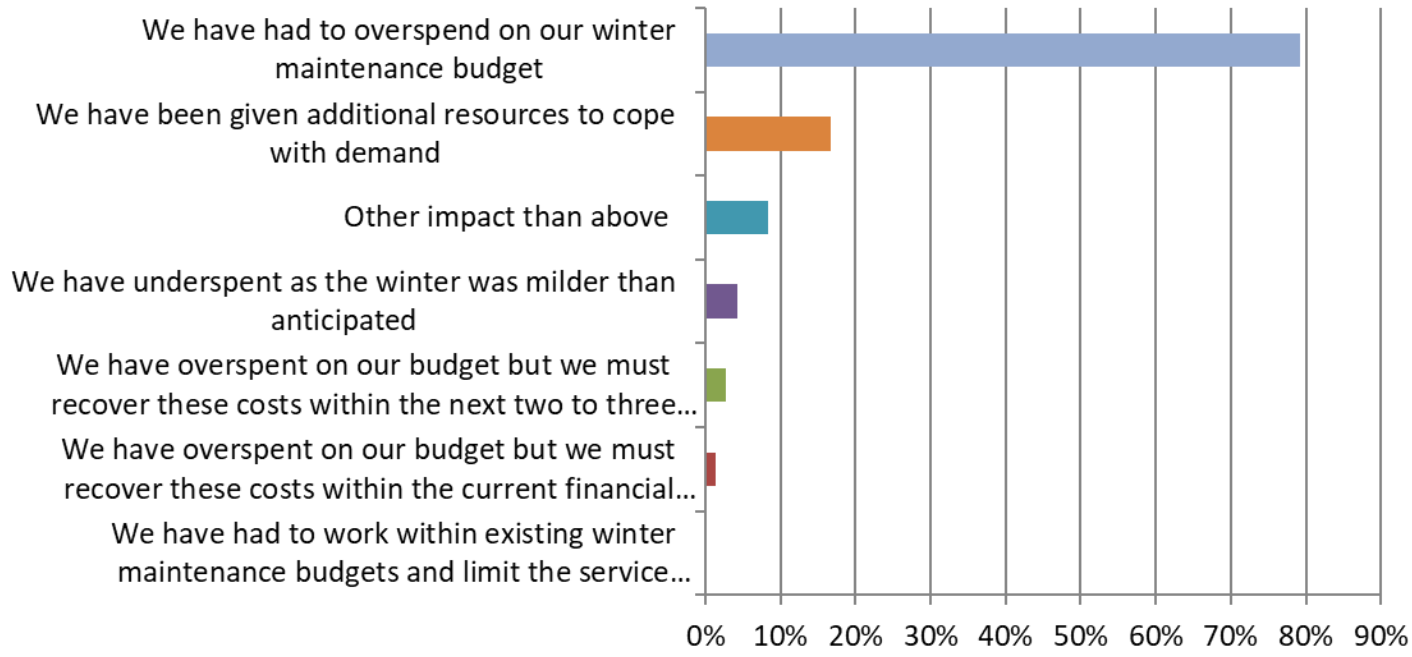
# Winter Maintenance

# How has the budget for the winter maintenance service changed from 2017-18 to 2018-19?



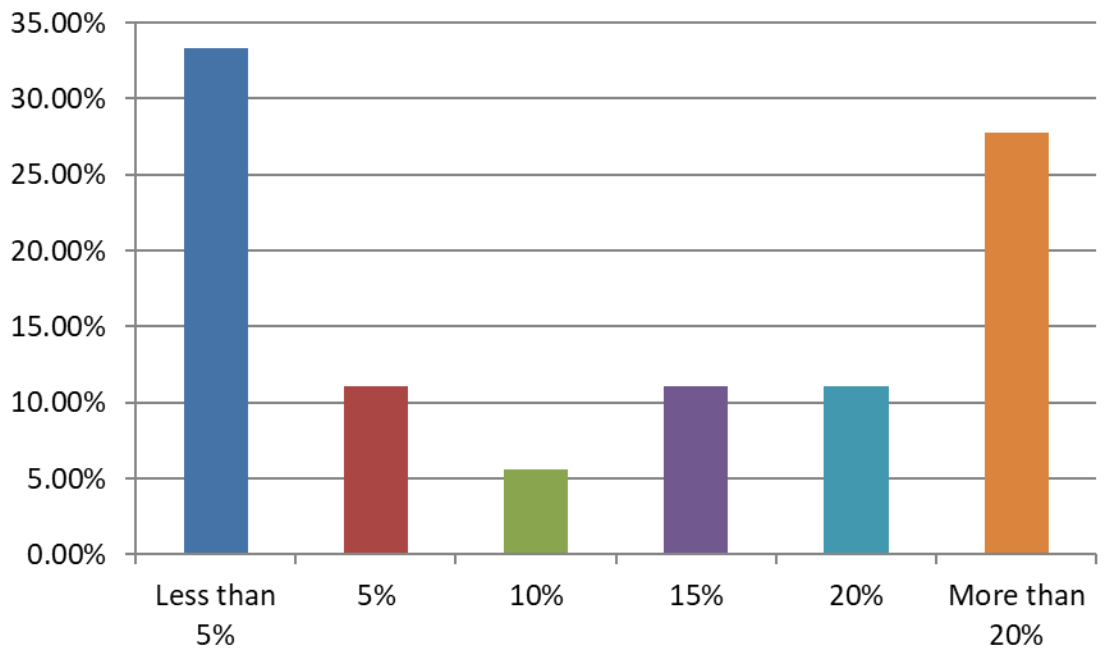


# With reference to the weather during the winter 2017-2018, what has been the impact on your winter maintenance budget?



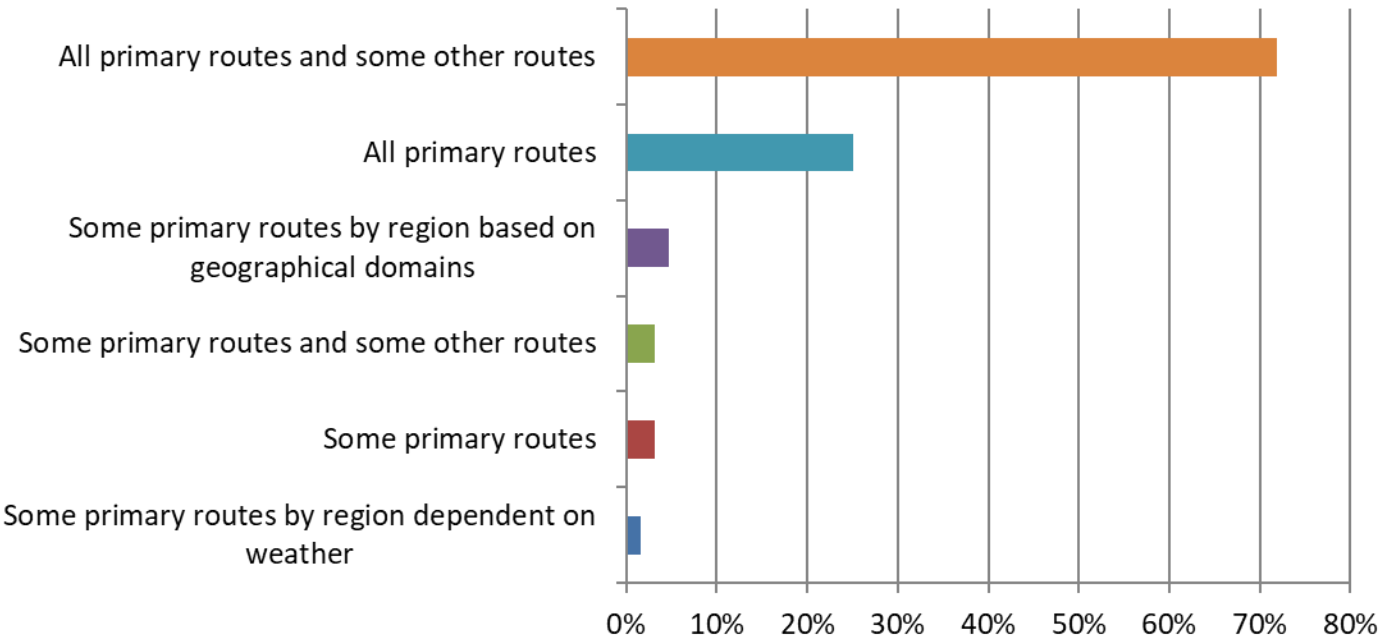


# If your budget has decreased from 2017-18 to 2018-19, how much has it decreased by?





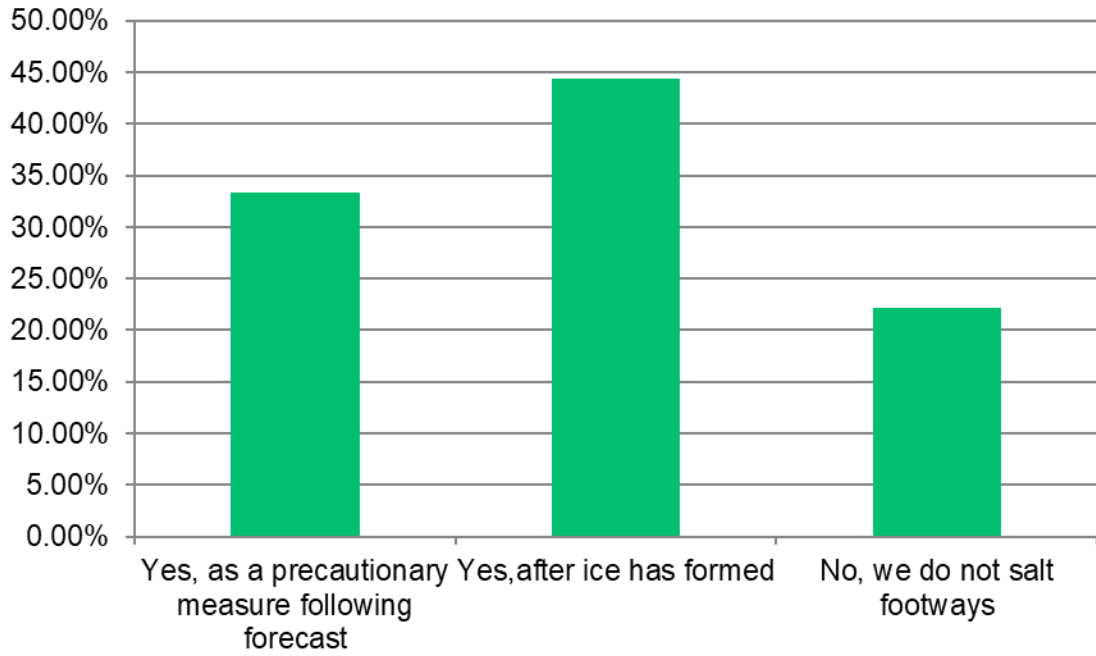
# With regard to your road network, which of the following are salted?





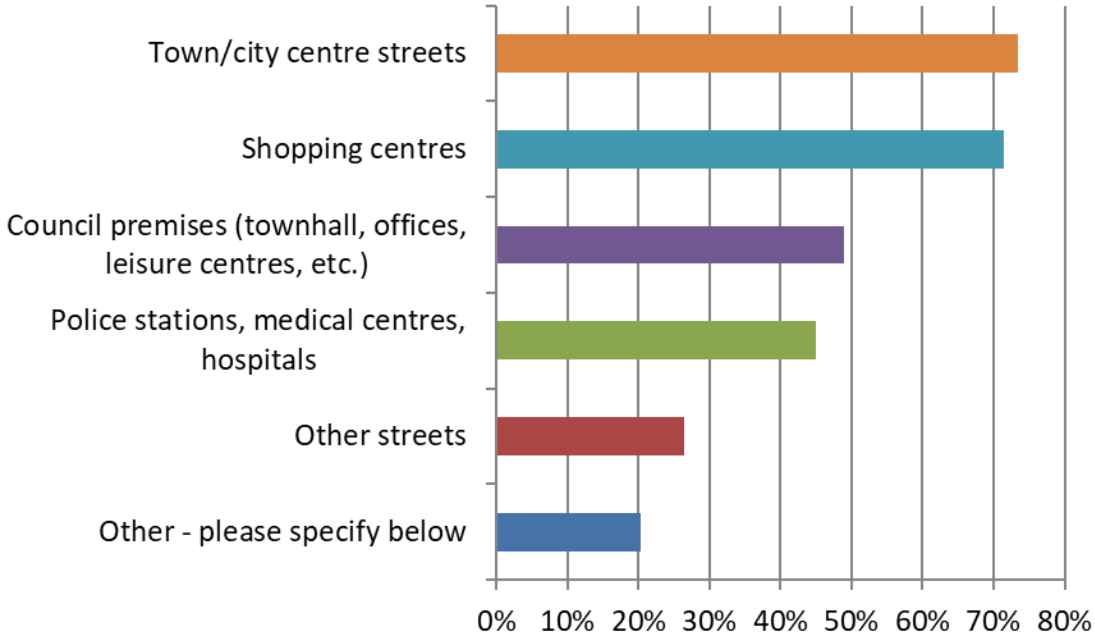


# Do you salt footways?



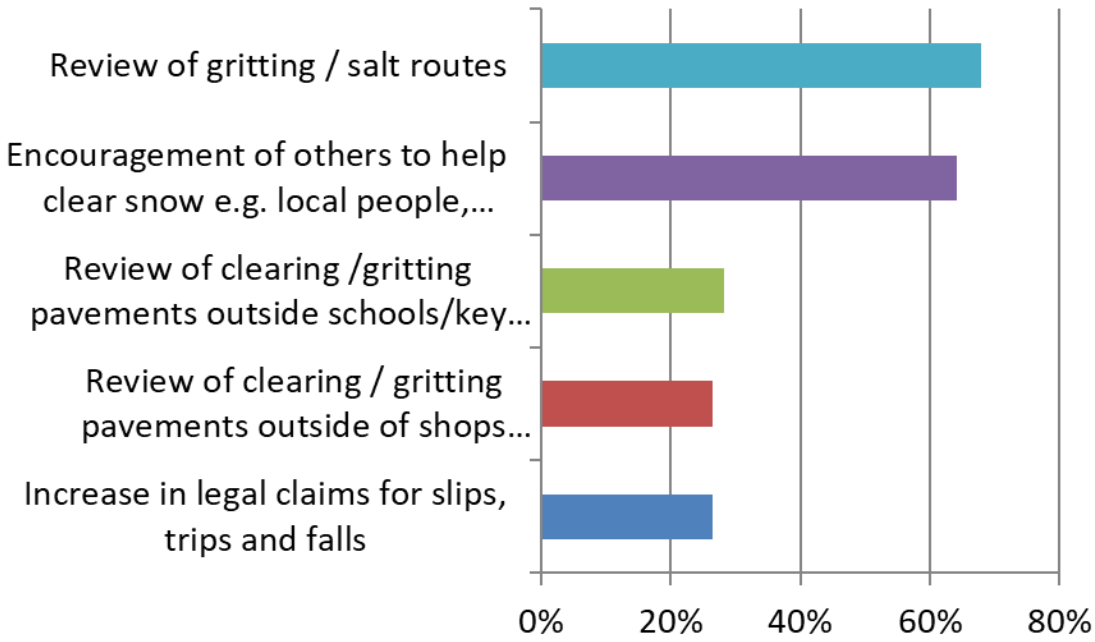


# If you do salt footways, which of these do you salt?





# Has the severe weather over the recent years led to any of the following



# Growth & Decline

## Growth

- Commercialisation
- Targeted Gritting
- Automation

## Decline

- Reduction in routes covered
- Maintenance/refilling of grit bins
- Treatment of minor roads

 apse

performance networks

# Contact details

**Rob Bailey, Principal Advisor**

**Email: [rbailey@apse.org.uk](mailto:rbailey@apse.org.uk)**

**Association for Public Service Excellence**

2nd floor Washbrook House, Lancastrian Office Centre, Talbot Road,  
Old Trafford, Manchester M32 0FP.

**telephone:** 0161 772 1810

**fax:** 0161 772 1811

**web:** [www.apse.org.uk](http://www.apse.org.uk)



INVESTOR IN PEOPLE



GB 11409



GB 11132



GB 14074