

Keeping tenants safe - Fitting 30,000 fire/CO alarms

Jim MacDonald

Lead Officer(Specialist Services), Fife Council

Social Alarm Interface Module Ei 414

Stand alone unit is designed to interface social alarm system and radio-link wireless alarms and accessories.



The aim of Social Alarm System

To integrate home safety systems with each other & with installed support communication systems.

Applications for Ei414

Interconnection with

External Communications

- Community Alarms
- Warden Call
- Auto Dialler
- Alarm System Intruder and or Extruder

Internal Systems

- Fire detection
- Sprinkler
- Indicators Sounders & Beacons

External Communication

Via the ei414 the activation of a detector, fire / heat / CO or sprinkler system will be relayed to the installed external support network.

Therefore external support has been alerted of an activation within that property initiating the appropriate action.

Internal Interconnection

Via the Ei414, the detection of a fire, heat or CO or sprinkler system can activate or shut down appropriately other systems within the home such as –

- The sprinkler system which sounds all detectors giving an increased level of indication to the resident which could include a hard of hearing kit
- Gas Shut Down

Sprinkler System

Sequence of Events in an Activation

- Sprinkler system activates with heat from fire
- Water flows from sprinkler to dampen fire
- All internal detectors sound fire
- Gas valve shuts
- External sounder/beacon activates
- External communication receives signal of activation raising a 999 call if required

Sequence of Events on Activation of a Smoke or Heat Detector

All internal detectors sound

External communication receives signal of fire activation initiating appropriate action contact resident or raising a 999 call

If installed can shut gas valve, turn off boiler, activate outside sounders and beacons

Therefore can offer solutions to assist with risk management

Sequence of Events on Activation of a CO Detector

CO Detector Sounds

- External communication receives signal of co activation initiating appropriate action.
- If installed can shut gas valve, turn off boiler
- Note this is an option available through the community alarm and warden call if installed

User Functions

- Facilitate test procedures of communications
- Ground level testing
- Central point for fault diagnosis
- Ease of install
- Assists management of systems in the home
- Can be decommissioned and
- Re-commissioned by turn of key
- Fully compatible with fife council housing standard fire detection RF system
- Degree of future proofing

Common Issues

Sprinkler Installation

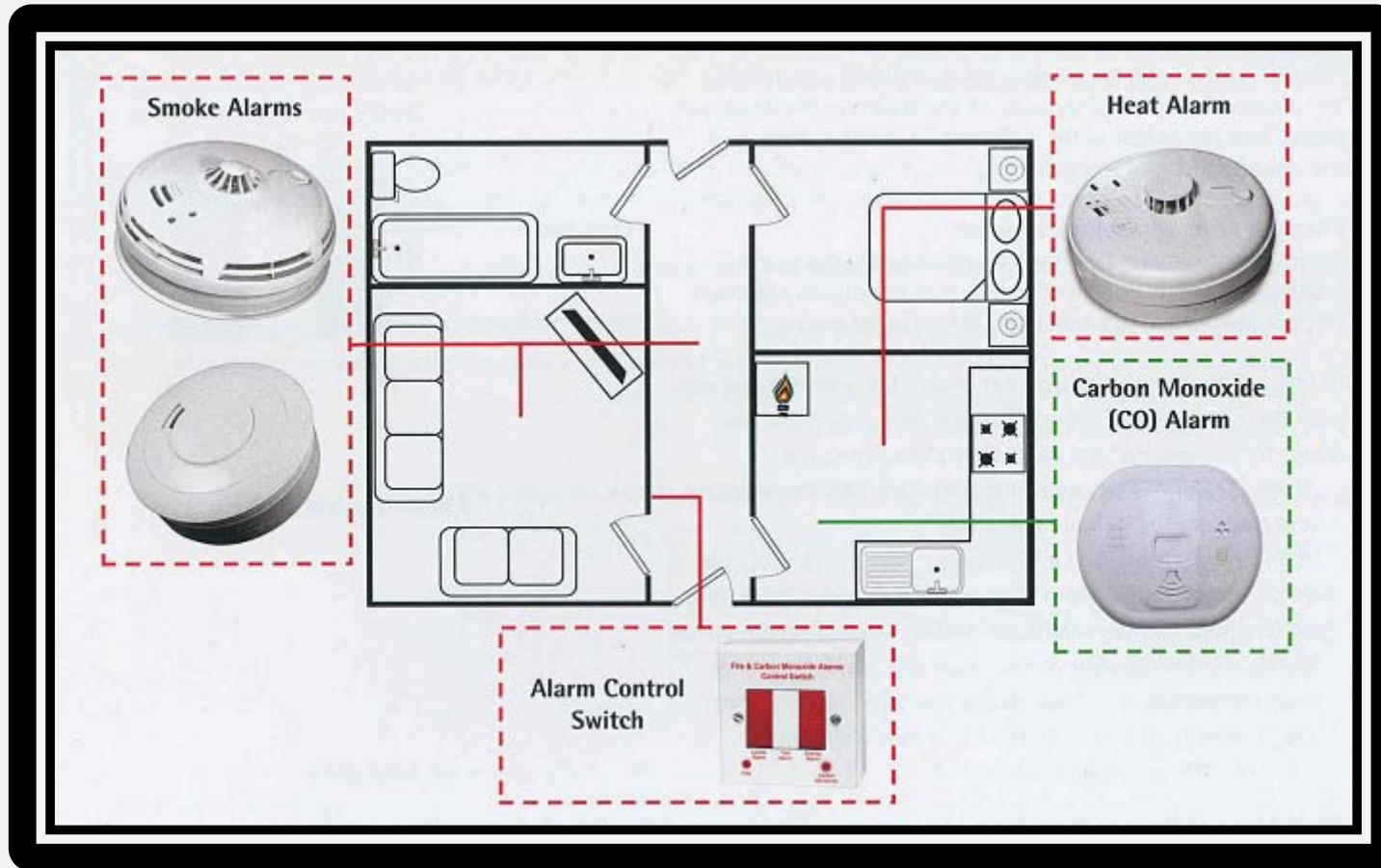
Failed Panel



Inadequate Protection



Solution



Ei414 Integrates The Systems



Multiple Systems installed which do not communicate



New Build Issues

Complex systems controlling individual elements of the installation



Non conformity to Fife council specifications

New Build Issues



Non conformity to Fife council specifications



Is the risk of fire real?





Social Alarm Interface Module Ei414

Stand alone unit
designed to interface
social alarm system
and radiolink wireless
alarms and
accessories



Presentation Compiled by Jim MacDonald & Shane Garrioch
Housing Services - Specialist Services

Original Proposal



Ei 414 Internal Label 1



Ei 414 Internal Label 2



Ei 414 Face Plate

