

School Meals: Maximising Funding

FSM Eligibility Checking Service

www.wves.wolverhampton.gov.uk/services/5055

City of Wolverhampton Council

Contact: Jo Smith (*Service Development Team Leader*)

jo.smith@wolverhampton.gov.uk

01902 554283 / 07766 473190

Free School Meals funding

Pupil Premium (FSM) Funding

- Current or historic (Ever6) FSM
 - ≠ Looked-After / Service Children
- Recorded at **any** Census, on roll at January
- April budget (£1,320 1^o; £935 2^o)
- Ever6 (?)
 - FSM and PP ↑↑
 - FSM not yet PP ↑
 - PP not currently FSM ↓
- = EYPP criteria (not protected)
- Transitional Protection
 - *1 April 2018 to ... March 2023 ... ?*
 - *FSM eligible to 2029 (incl. PP funding)*

Universal Infant Free School Meals (UIFSM)

- Meal uptake
 - October **and** January Census
 - **Not** May
- £2.30 per meal
 - Unchanged since 2014
- Impact on FSM registrations
 - Not only infant-sector

FSM Supplementary Grant

- **NEW** funding (2018)
- Increase in reported FSM **meals**
- October Census (*2017 – 2018; 2018 – 2019; ???*)
- £440 each
- Cost neutral?
 - Education Act 2011 (*charge to parents must not exceed cost to school*)

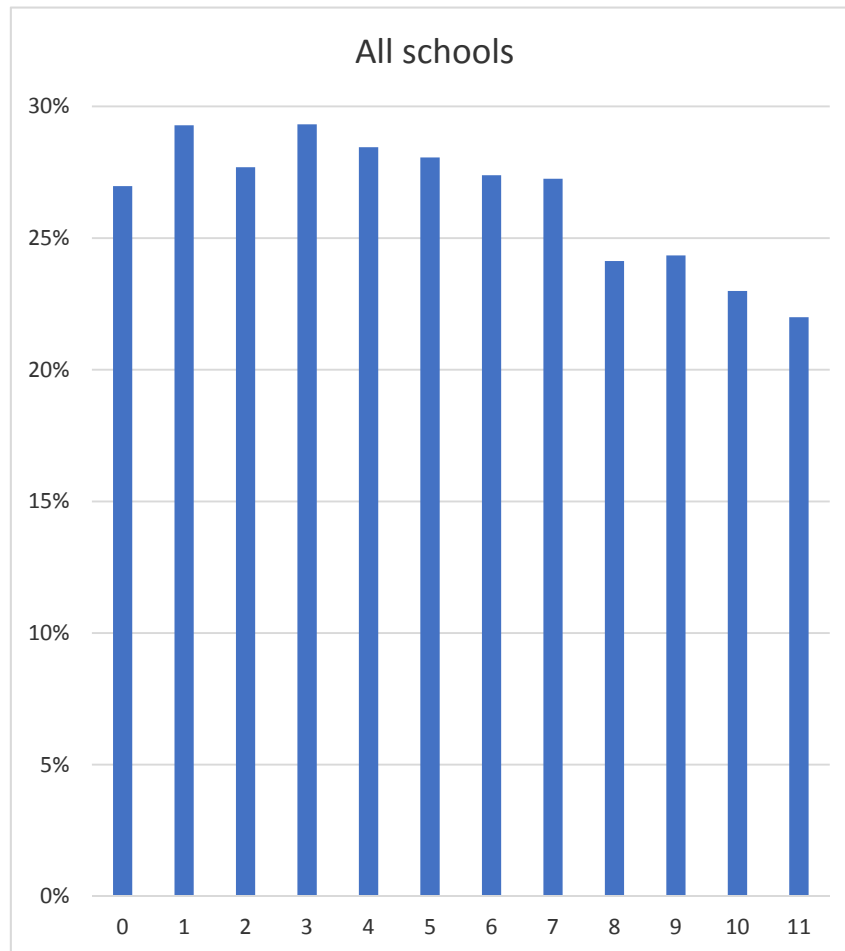
Enhancing the checking process

- Schools collect, record and share data from **all** parents (GDPR)
 - **National Insurance / NASS Reference number**
 - **Date of Birth (DOB)**
 - plus details already recorded (*e.g. name, relationship to child, etc*)
- Upload / Email data for enhanced FSM checking
- Receive results and update school records (termly)
 - Usually same / next working day (< 5 working days)
- Individual applications by phone or online
 - www.wolverhampton.gov.uk/freeschoolmeals
- Unique access to historical claim data (*City of Wolverhampton only*)

>£7m. additional Pupil Premium funding ...

(+121% FSM claims 2015 to date)

Trends and Analysis



- % FSM by year group
 - individual schools / Academies
 - Multi Academy Trusts
- Variation due to
 - Shift in demographics?
 - Underclaiming?
 - Other ... ?
- Focus on data

Next steps ...

- Nationwide support
 - Rotherham, Staffordshire, Worcestershire ...
 - Records held on schools' own systems
 - No rechecking protected claims before 2023
- Data cleansing
 - “No Trace – Check data”
- Baselines
 - e.g. deprivation (*Universal Credit v Working Tax Credit*)
- Unknowns ...
 - Transitional protection, Ever6, supplementary grant, Holiday Hunger ...