

Do you know your data, or are you simply lost in a sea of numbers?








Overview

- a) **To explain how poor Green Space Audit performance data influenced Knowsley's first Green Space Strategy**
- b) **To highlight how the Strategy used Green Space Standards of Qualitative Performance to focus its policies & actions**
- c) **To demonstrate how through the delivery of the Strategy a range of tangible improvements have been secured**
- d) **To consider how a new performance framework can be utilised that measures the impact of Knowsley's green space assets on the delivery of a range of Council Strategic Outcomes**



Park and Garden Typology	Community Area	Quality Score 2007	Rating
Court Hey Park	South Huyton	71	Excellent
Henley Park	Whiston	69	
Sawpit Park	South Huyton	65	
St Chad's Gardens	South Kirkby	65	
McGoldrick Park	South Huyton	64	Good
Halewood Park	Halewood	51	Fair
Wignall Park	South Kirkby	51	
Hall Lane Park	Cronton	48	
Knowsley Village Recreation Ground	Knowsley Village	46	
Eaton Street Recreation Ground	Prescot	46	
Stadt Moers Park	Whiston/South Huyton	44	Poor
Webster Park	South Kirkby	44	
Bowring Park	South Huyton	43	
Jubilee Park	North Huyton	34	Very Poor
Mill Dam	North Kirkby	33	
Alt Park	North Huyton	9	

Score	0-35	36-45	46-55	56-65	66+
Quality	Very Poor	Poor	Fair	Good	Excellent
					

2010 Council Green Space Strategy

- **A reference point for all matters relating to the publically accessible green space environment**
- **Provided a framework for decision making to ensure this important public service is managed in an accountable, sustained & consistent way**
- **Captured our strategic intent, which has facilitated**
 - Understanding of their value & demonstration of worth
 - Enhanced quality, quantity & accessibility standards
 - Collaborations with public, private & community sectors
 - External fund raising success
- **Many key priorities & projects now delivered**
 - Significant improvement to Green Space Standards
 - Across a range of green space typologies

Our partners



Building communities. Transforming lives.




Enriching nature, Enhancing communities



 Parks & Gardens



 Natural & Semi Natural



 Amenity Green Spaces



 Children & Young People's Facilities



 Outdoor Sports Provision



 Allotments

Parks & Garden Typology

- **Urban parks, formal gardens & country parks**
 - Variety of formal & informal recreation opportunities
 - Create a sense of place for the local community
- **28 Parks and Gardens in Knowsley (18 in 2005)**
- **Quantity Standard Secured = 1.77ha per 1,000 residents**
 - 0.8ha is the Council's adopted standard
 - Uplift due to improvements to Amenity Green Spaces & inclusion of multi-functional Natural & Semi Natural sites
- **Accessibility Standard Secured = 1,200m from home**
 - Majority of urban areas well served
 - Gaps for Stockbridge Village & Knowsley Industrial Park
- **Quality Standard Secured = average score of 64 (Good)**
 - From 49 (Fair) in 2008

Case Study Jubilee Park

Quality Score 2007/08
34

- Poor infrastructure
- Derelict pavilion
- Low standards of grounds maintenance
- High levels of crime and anti-social behaviour
- Poor levels of community involvement
- Lack of positive activities



Case Study Jubilee Park

Quality Score 2013/2014
73

- Infrastructure, facility and landscape improvements
- Refurbished pavilion
- High standards of grounds maintenance and landscape management
- Lower levels of crime and anti-social behaviour
- High levels of community involvement
- Volunteer led play, sport and community events
- Community and corporate social volunteering
- A Green Flag Award in 2012/13



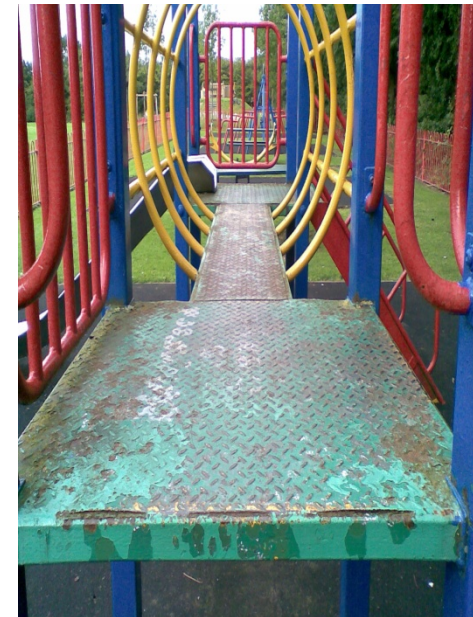
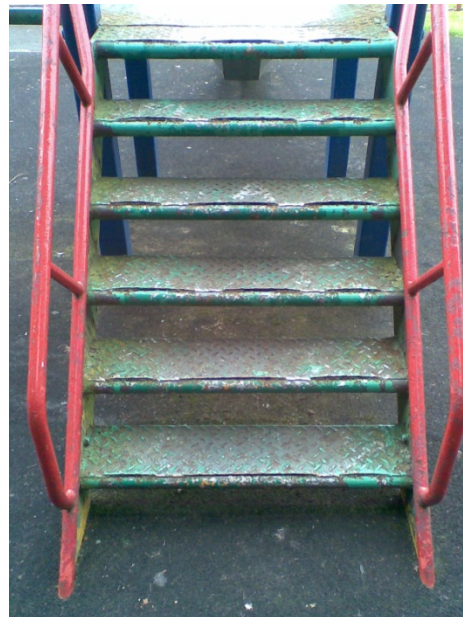
Children and Young People's Typology

- **Equipped play areas, MUGAS and skate parks**
 - Opportunities for play and social interaction involving children and young people
- **48 Play Areas**
 - Play Pathfinder Programme provided 28 new & replacement sites (£3m 2007 to 2009)
- **Quantity Standard Secured = 0.08ha per 1,000 residents**
 - 0.2ha is the Council's adopted standard
 - Given the significant investment recommendation to reduce the adopted standard to 0.1ha
- **Accessibility Standard Secured = 800m from home**
 - Majority of urban areas well served
 - Gaps for Kirkby, Huyton, Prescot & Halewood
- **Quality Standard Secured = average score of 67 (Good)**
 - From 49 (Fair) in 2008
 - 89% have achieved good / excellent status compared to 25% in 2008

Case Study The Pasture Play Provision

Quality Score 2007/08
45

- End of life-cycle facilities
- Lower age group facilities only
- Lack of natural play
- Poor levels of community involvement
- Lack of play activities



Case Study The Pasture Play Provision

Quality Score 2013/2014
77

- New Play Pathfinder aimed at 8-13 year olds
- New toddler play facility aimed at 0-8 year olds
- Natural play designs
- Associated landscaping and sculpture trail
- Schools involvement
- Play and community events
- Community involvement and volunteering
- A Green Flag Award in 2013/14



Natural & Semi Natural Typology

- **Urban woods & forests, scrub, grassland & wetlands**
 - Primary purpose wildlife conservation & biodiversity
- **64 Local Wildlife Sites, 6 Local Geological Sites & 1 Local Nature Reserve**
- **Quantity Standard Secured = 1.09ha per 1,000 residents**
 - 0.2ha is the Council's informal standard
 - Includes areas identified in other typologies
- **Accessibility Standards**
 - Realistic & equal distribution now secured
 - Northwood Forest Hills
- **Quality Standard Secured = average score of 54 (Fair)**
 - From 46 (Fair) in 2008
 - Average score does not reflect the significant improvements made at sites e.g. Ten Acre Pits, Little Wood, Acornfield Plantation & Huyton Wetlands

Case Study Northwood Forest Hills

Not Scored 2007/08

- A lack of natural and semi natural typology within this area of North Kirkby
- Poor infrastructure
- Little public access
- Low standards of grounds maintenance
- High levels of crime and anti-social behaviour
- No community involvement
- No positive activities



Case Study Northwood Forest Hills

Quality Score 20013/14
68

- New and improved entrances, furniture, pathways, facilities and habitats
- Good standards of grounds maintenance and ecological management
- Lower levels of crime and anti-social behaviour
- High levels of community involvement
- Volunteer led community events and activities
- Winner of the Royal Forestry Society Award 2013



Allotment Garden Typology

- **Opportunities for growing nutritious food locally**
 - Social activity, mental wellbeing, healthy eating & education
- **9 Statutory Allotment Gardens**
- **Quantity Standard Secured = 0.03ha per 1,000 residents**
 - 0.05ha is the Council's adopted standard
 - 1 allotment per 800 people (the same as 2008)
 - New provision is required e.g. Pennard Avenue, Huyton
- **Accessibility Standard**
 - 1,600m is the Council's adopted standard
 - Allotment waiting list has 150 residents on it
 - Notable gaps in provision Kirkby, KIP, Knowsley Village, Stockbridge Village, Cronton & areas of Halewood
- **Quality Standard Secured = average score of 65 (Good)**
 - From 52 (Fair) in 2008
 - 8 of the 9 sites are now classed as Good / Excellent

Case Study Stadt Moers Allotments

Quality Score 2007/08
48

- Poor infrastructure and access
- Empty plots
- Poor toilets
- No meeting space or safe store
- No Allotment Association
- Wasteful water supply



Case Study Stadt Moers Allotments

Quality Score 20013/14
68

- New and improved entrances, and access
- Fully tenanted
- Constituted and successful Allotment Association
- Provision of ancillary facilities including accessible toilets, meeting room and store.
- Provision of raised beds
- Provision of composting
- Use by adults with additional needs



Performance Outcomes

- **100% increase in Green Flag Awards from 6 in 2009 to 12 in 2013, readily accessible to all of Knowsley's communities**
- **100% rise in average quality parks score 32 in (2008) to 64 in (2013)**
- **Over £6m of external investment secured between 2009 and 2013**
- **Increase of 73% proactively supported green space community groups from 25 in 2008 to 52 in 2013**
- **Additional 27,000 volunteer hours at an economic value of £0.310m pa**
- **100% increase in participation in green space events and activities from 35,000 in 2007/08 to over 70,000 for 2012/13**
- **Significant wider citizen involvement and increasing civic pride**
- **Substantial increase in capacity and skills amongst groups and individuals**
- **15% point improvement in public satisfaction with parks**
- **20% point improvement in public satisfaction with play areas**

Performance Information

- **Used to evidence the delivery of the current Green Space Strategy's qualitative standards through significant infrastructure improvements led by community engagement & external fund success**
 - Quantity
 - Accessibility
 - Quality
- **Our Green Space Assets are ready to offer a positive return on investment through their contribution to a wide range of Strategic Outcomes**
 - But this needs to be evidenced

The rationale for our GSS review

- **The Council is at the forefront of managing the impacts of significant reductions to public sector spending**
- **Such austerity is particularly acute in Knowsley where the Council is**
 - Promoting economic growth & stimulating employment
 - Embedding Welfare Reform
 - Tackling major health & educational inequalities
- **Therefore innovative ways to secure positive outcomes against such strategic drivers must be identified**
- **Thus the rationale of the Green Space Strategy review is to ensure that the contribution of Knowsley's now high quality & readily accessible green spaces makes to these matters is recognised, mobilised & evidenced**

The Space Strategy Review - Scope

- a) Identifying the strategic context**
- b) Progress made in securing improved Qualitative Standards**
- c) Identifying the contribution that Knowsley's green infrastructure is making to the achievement of the Council's Corporate Plan & the opportunities available for enhancing this offer through**
 - Encouraging health and wellbeing
 - Providing social value
 - Contributing to economic growth and marketing the borough
 - Learning in the natural environment
 - Addressing crime and anti social behaviour
 - Mitigating the impacts of climate change and helping communities adapt to its impacts
- d) Developing a new Green Space Functionality Principle.**
- e) Assessing financial challenges and opportunities.**
- f) Responding positively to the Council's Commissioning Programme through new service delivery approaches in terms of the opportunities outlined in point (c)**

Green Space Strategy Review – Key Lines of Enquiry

- **Key lines of enquiry against Strategic Outcomes have been identified upon which the new Strategy will be drafted following consultation with stakeholders**
- **The beneficial & often unique contribution that Knowsley's green spaces make to these agendas is the fundamental purpose of the review**
 - To highlight this offer to strategic commissioners & service delivery practitioners
 - Allow them to influence the intent, policies and actions of the new Strategy
- **Research Papers have been prepared**
 - For each line of enquiry with recommendations for the review to consider



Health - Independent Use





Health - Supported Use





Health - Mass Participation





Social Value





Economic Growth





Learning In The Natural Environment





Crime and ASB

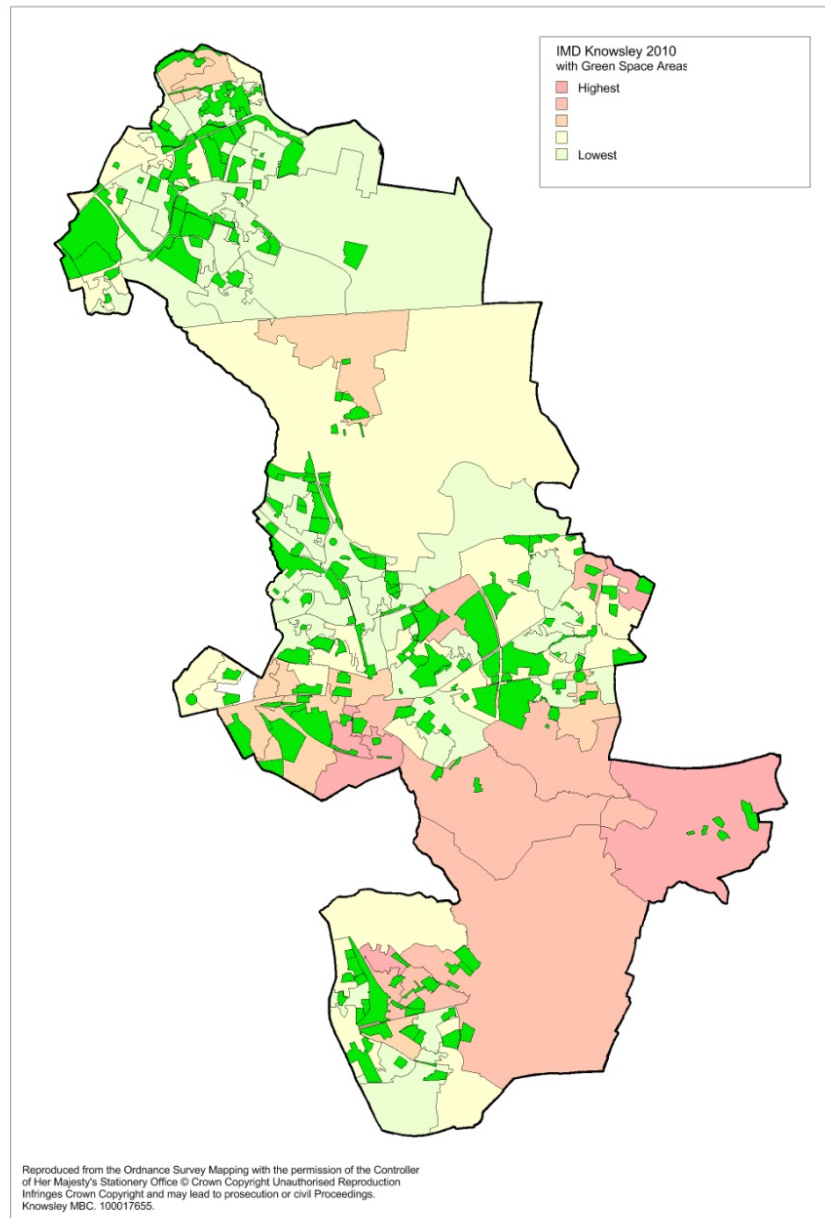




Climate Change



Green Space Functionality Principle



Determining the value each green space provides to strategic outcomes in order to direct future resources in utilising green spaces to deliver against those outcomes!

Conclusion

- **Our green spaces will support the delivery of a range of national, City Region and Council strategic outcomes**
- **Our research establishes our green space contribution which is firmly evidenced for qualitative performance standards**
- **The scale of our green space offer needs to be increased to encompass wider strategic outcomes but this must be clearly evidenced**