



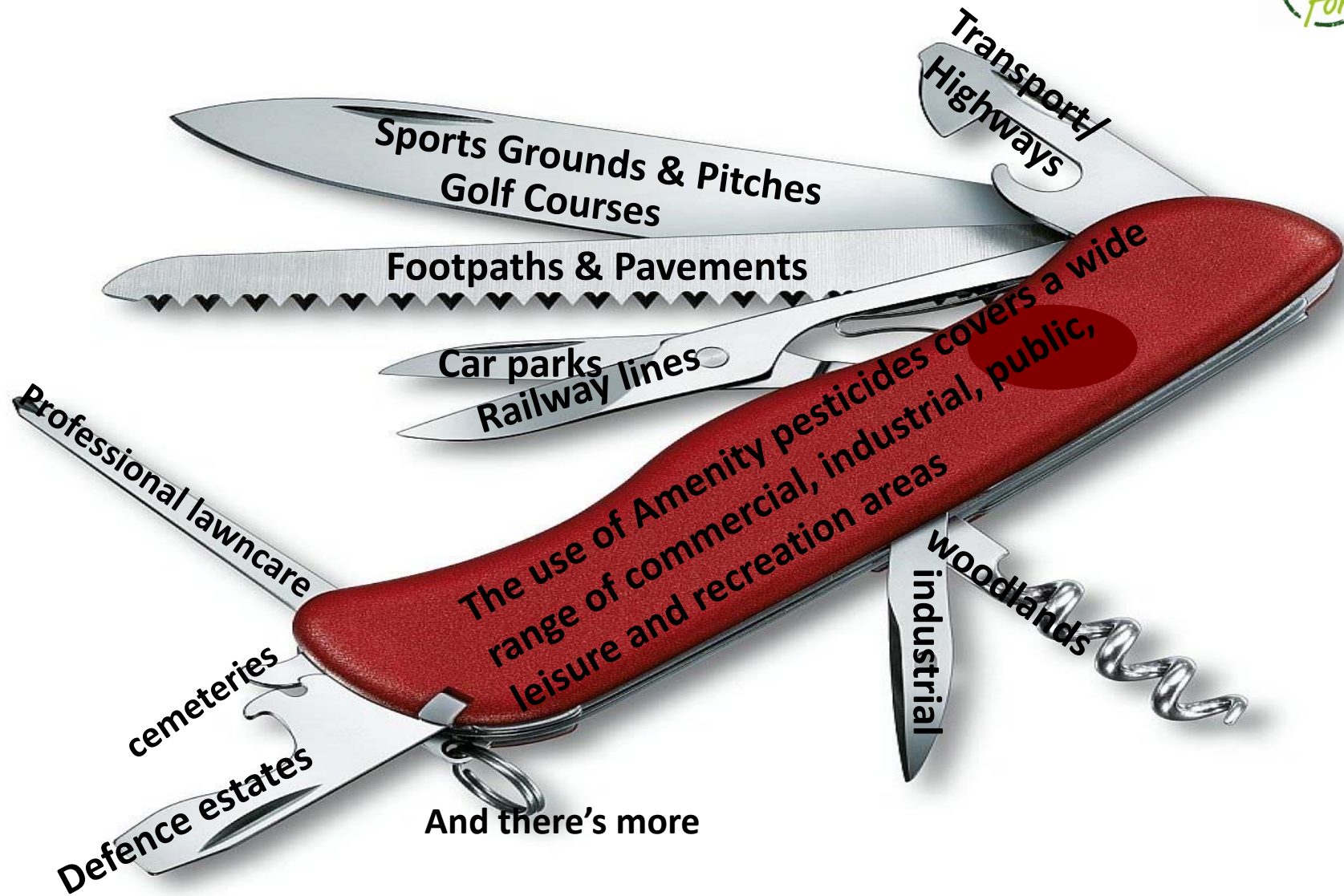
PROMOTING BEST PRACTICE

Integrated Weed Control What, Why and How

John Moverley



WHAT ARE AMENITY AREAS?



And there's more

TODAY'S PRESENTATION

- The Amenity Forum - What it is and what it does
- Integrated Cc
- Integrated Cc
- Integrated Cc
- Some issues -
- Conclusions



ce for you



The Amenity Forum is the collective body representing the Amenity industry in relation to weed, pest & disease control

The objectives of the Amenity Forum include:-

To promote and encourage proper and responsible use of pesticides and integrated methods for the control of pests, weeds and diseases

To lead, coordinate and encourage achievement of “Best Practice” objectives in Amenity pesticide use

To coordinate and encourage the establishment of sustainable qualifications, training and CPD activity, specifically for the Amenity sector

To organise activities within the Amenity Forum membership and linked organisations, such that Amenity Forum objectives are developed in a coordinated way

www.amenityforum.co.uk





The Amenity Forum is the collective body representing the Amenity industry in relation to weed, pest & disease control

We receive no direct financial support from the Government although some in kind

Our principal funding derives from membership subscriptions

With additional finance from external activities such as our annual conference

www.amenityforum.co.uk



Some of our activities

1.  Best practice guides
the web site
- newsletters, A
date s
- 2.
3. Organisation of
conference
4. Production
& regular Chairman's
5. Dial
ment, media, stakeholders etc
6. Lobby
and more

THE VOICE FOR THE SECTOR ON ALL ASPECTS OF WEED, PEST AND DISEASE CONTROL



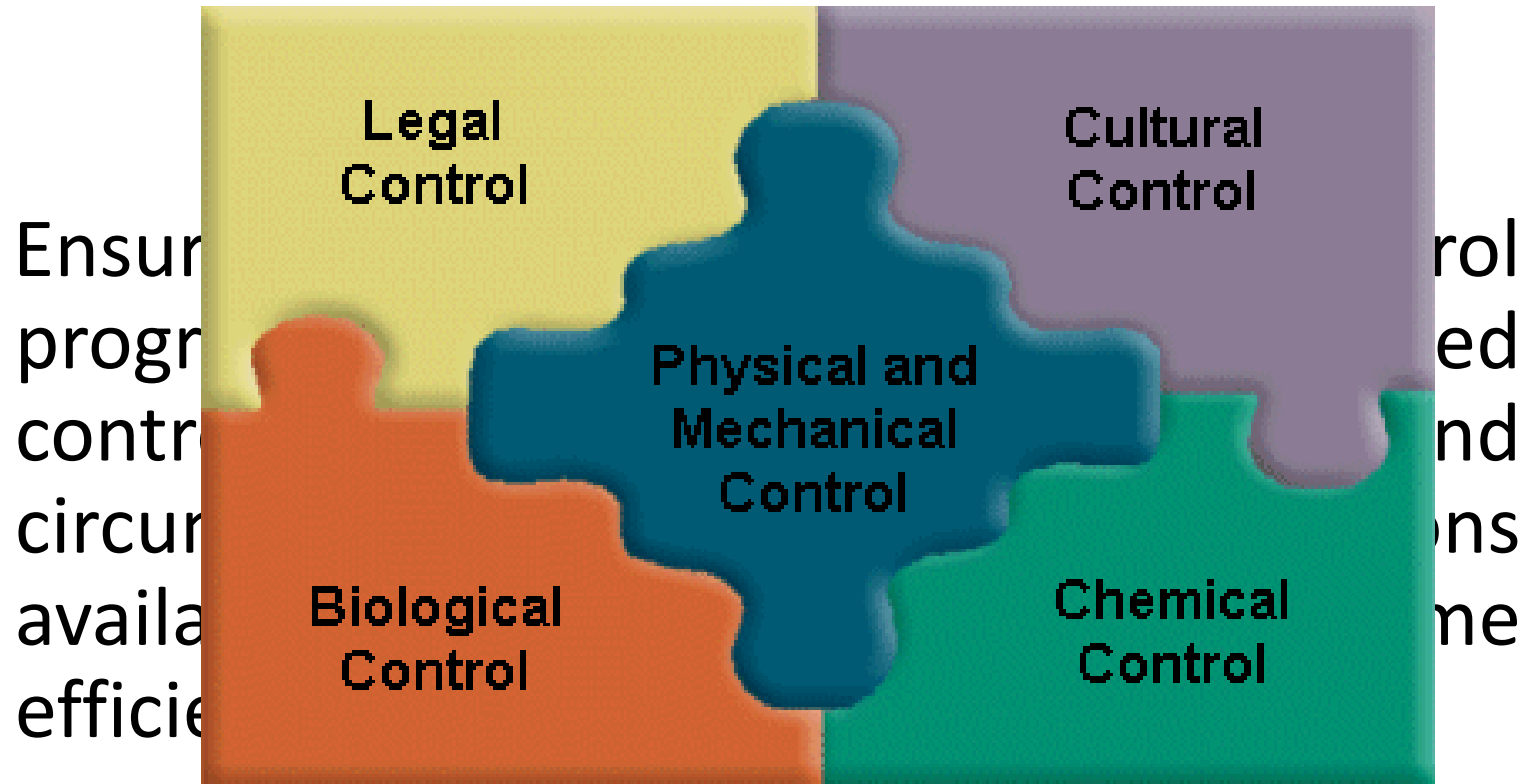


Integrated Control – What

The Formal Definition

Integrated approach

“Careful consideration of all available methods and integration of measures that discourage the development of harmful organisms to keep the use of controls to levels that are economically and ecologically justified and reduce risks to human health and the environment.”





Integrated Control – Why



PROMOTING BEST PRACTICE

Policy Drivers

The times they are a'changing





PROMOTING BEST PRACTICE

Policy Drivers

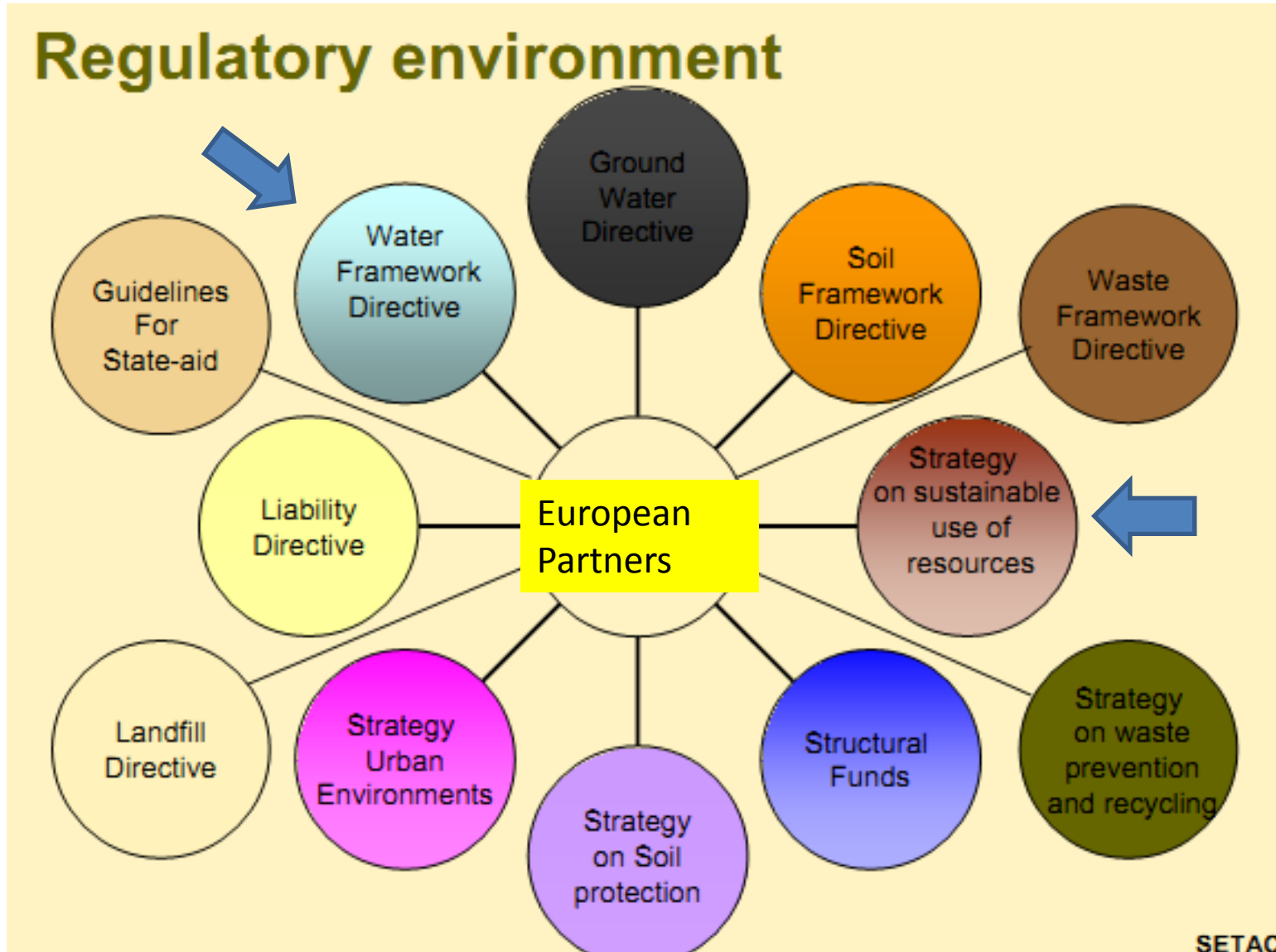
The times they **HAVE CHANGED**





Public Opinion
Environment
Regulations
Economics
End Use Expectations
Complexity

The Policy Framework in Europe



Sustainable Use of Pesticides in the UK

Positive (SUD) in the

- Implement measures passed (2013)
- Real change in practice
- Will improve the environment
- National Action Plan for the Sustainable Use of Pesticides (Plant Protection Products)



Plant Protection Products (Sustainable Use) Regulations 2012



Environment protection



**Targeted application &
equipment testing**



**Training & continuous
professional development**



Water protection



Human health protection



Handling and storage

WATER FRAMEWORK DIRECTIVE



Priority Areas and Progress

- **Improving practice in the amenity sector.**

- Understand and mitigating risk
 - Importance of training initiatives

- **Enhanced protection of water.**

- Challenge of water quality legislation
 - Communication amongst stakeholders

- **Integrated approaches.**

- Use of pesticides as part of a range of control measures
 - Enhanced understanding
 - Maximising effectiveness of R&D



KEY PRIORITIES



- **Minimise risk** to the operator, to the public and to the specifier/ contract awarder
- Achieve the **desired standard** in a **cost effective** manner
- Adopt an **integrated approach** to the task
- **Protect water**
- Protect surrounding desired vegetation

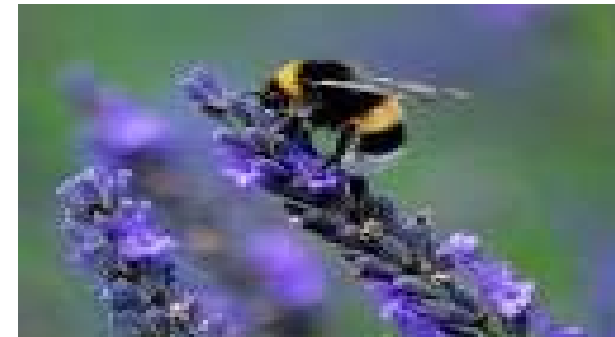


Your obligations

- No legal requirement to implement IPM;
- Legal requirements to:
 - Take reasonable precautions to protect human health and the environment;
 - Ensure that use is minimised in public spaces;

The Issues

- Bees
- Use of Glyphosphate
- Pesticide lobbying campaigns
- Impact of Sustainable use Directive
- Best Working Practice
- What we do
- What more can we do
- Cost and Resources
- Complaints





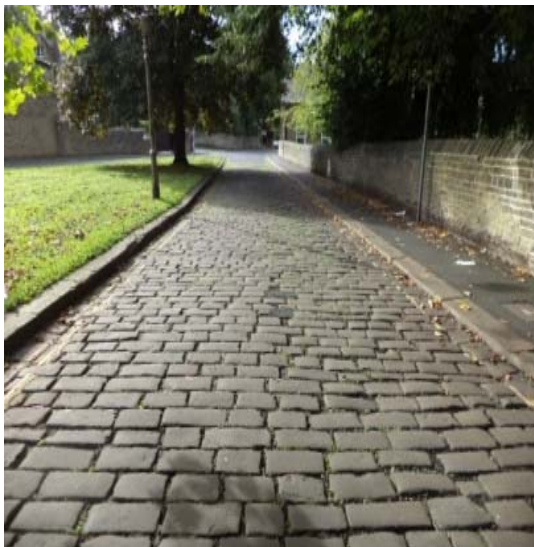
Integrated Control – How

Current Drivers in Local Authority

- ▶ Budgets and cost controls
- ▶ Priorities Environmental and operational
- ▶ Legislation
- ▶ Reactive versus Proactive what is your strategy?
- ▶ Standard setting
- ▶ Impacts – Time taken
- ▶ Health and safety Compliance – What happens if it goes wrong



How Do You Make an IPM Plan?



- Site assessment – understanding conditions that favour the pest – unique to your turf area. Map the area to be managed in the plan
- Monitoring – accurate identification needed of pest, map specific areas of responsibility for the person monitoring/giving training
- Setting thresholds – how little/much is acceptable to staff/golfers
- Identifying management options: cultural, biological, genetic, chemical how should each one be used and to what degree
- Building weed profiles – type of weeds, conditions that favour it, treatments to get rid of it etc.
- Proactive weed management – actually how you are going to treat the problem and document work carried out to eradicate weeds
- Evaluation – monitoring the plan, did the treatments work, can anything else be done to improve conditions, updating plan

Key Points – Integrated Approach

- For any situation adopt an IPM approach
- Demonstrate a site specific approach
 - Understand the asset;
 - Understand the risks (human health, environmental, resistance);
 - Adopt flexible approaches (type and degree control, timing of applications)
 - Consider all options for control
 - Joined up working.
- Effective contract and job specification management





WEEDS

Best Practice Guidance
Notes for Integrated
and Non-chemical
Amenity Hard Surface
Weed Control

From a Defra-funded 5-year programme entitled:
*Development of zero and minimal herbicide regimes for
controlling weeds on hard surfaces and determining
their emissions P52802 (2009-2015)*



Research

5yr project looking at three weed control options:

Herbicide only – two programmed treatments:

2nd - between Aug & Sept

with thermal and/or mechanical treatment

No herbicide:

Thermal and mechanical treatments only



Example of 'Weediness' Scales



Level 1



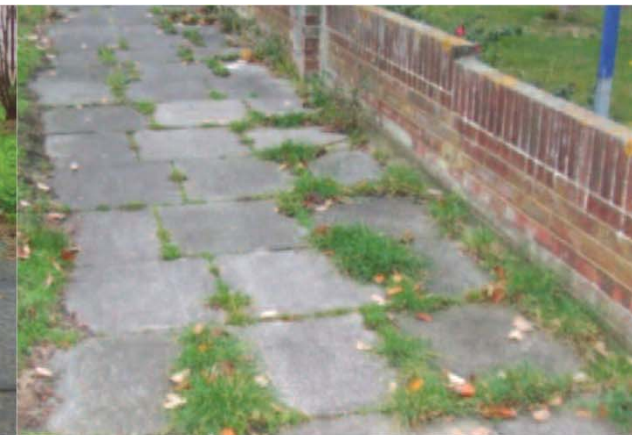
Level 2



Level 3



Level 4



Level 5



Level 6

Integration in Practice

- change way of thinking
- Better design will look better
- Prevent detritus – weed growth and complaints
- Save money less time
- Linked in with targeted and smart sweeping routes



SOME KEY ISSUES



- Integrated control – ensure you know what it is and what it is not
- Use of pesticides (still required) – ensure advice is based upon facts and the science not just feelings and rumour
- Ensure you follow best practice, buy your chemicals from approved sources, seek advice, apply correctly and manage



Key Points - General



- Review contract and control specifications – more of the same will not do
- Integrated management planning (IPM) is essential
- Understand the problems
- Look for and operate to the Amenity Assured standard including commitment to using trained and continually updated staff at all levels
- Control development of weeds and economically and ecologically justified levels of control
- Seek Amenity Forum membership & hence commitment to best practice



Some Other Issues

Sprayer Testing



Any sprayer mounted equipment, whatever the size of boom width, now comes under a need for regular testing.

- A guide to the frequency of testing required can be obtained from CRD
- Guidance sheet on Amenity forum website

In any case Annual MOT test for sprayers (NST) is advised and records can be checked on HSE visit

- Reduced costs checks on pump pressures and nozzle effectiveness
- Costs of Test pays for itself



TRAINING & CPD

- A key factor and even more so in the future, minimising risk, cost effectiveness, best practice, standards
- Qualification structure in relation to grandfather rights, vocational training, CPD for managers/ sales staff, **BASIS Amenity Fertiliser**
- Sector must ensure commitment to CPD
- after 2025 anyone who is purchasing a product for professional use must ensure the product is supplied by someone who holds a training certificate and will be working under the direct supervision of someone who holds one



PESTICIDE BANS IN EUROPE

- Plenty of talk about this
- But don't believe all you hear or read
- What is true is that we must support an integrated approach
- And demonstrate that we ourselves are committed to best practice
- With the most effective use of pesticides



THREAT TO GLYPHOSATE?

- Again don't believe everything you hear
- However important to ensure our house is in order
- Some of the 'concerns' raised may well be based upon incorrect information
- But some would never let the facts get in the way of a good story
- Again the sector must demonstrate its committment to best practice and
- That we can do this voluntarily





PROMOTING BEST PRACTICE

Conclusions



Ten Golden Rules



They are not comprehensive but hopefully establish the key factors to be considered

Key reference documents are Guidance Notes available on the Forum website and in your packs today

www.amenityforum.co.uk



KEEPING UPDATED

Our website www.amenityforum.co.uk

Our circulation list

Alan.Spedding@amenityforum.co.uk

Join us as members, attend our free updating events and our annual conference & exhibition on 13th October at Burton Albion FC
conference@amenityforum.net



Updating Events 2015



PROMOTING BEST PRACTICE

- Lincolnshire 26th January
- Essex 2nd February
- Sutton Coldfield 4th February
- Swansea 18th February
- Leeds 1st March
- Durham 2nd March
- Bristol 9th March
- Lancashire 15th March
- Derbyshire 17th March
- London 18th March
- Kent 24th March
- Belfast 7th April
- Edinburgh 12th April

STAND UP AND BE PROUD OF THE AMENITY SECTOR



- ITS SIZE
- ITS COMPLEXITY
- ITS IMPORTANCE
- WORKING TOGETHER WE CAN DEMONSTRATE OUR COMMITMENT TO BEST PRACTICE & DRIVING UP STANDARDS
- SUPPORT THE AMENITY FORUM & WE CAN STAY IN CONTROL



Upping our game

A challenge like



Me beating myself on golf!!



IMPORTANT & ESSENTIAL



Nottingham Forest winning The European Cup



Amenity sector and all involved with it
being recognised for its importance,
professionalism & standards





PROMOTING BEST PRACTICE

Integrated Working

Local Authority Perspective – an integrated approach with common sense, responsible & reasoned methodology

John Moverley

