

**apse**

# APSE Northern Forum 2022

Lisbeth Baxter - BDR Manager, Rotherham Council

*How will the strategy be built in to/contribute to corporate priorities?*



@apseevents

# How will the strategy be built in to/contribute to corporate priorities?

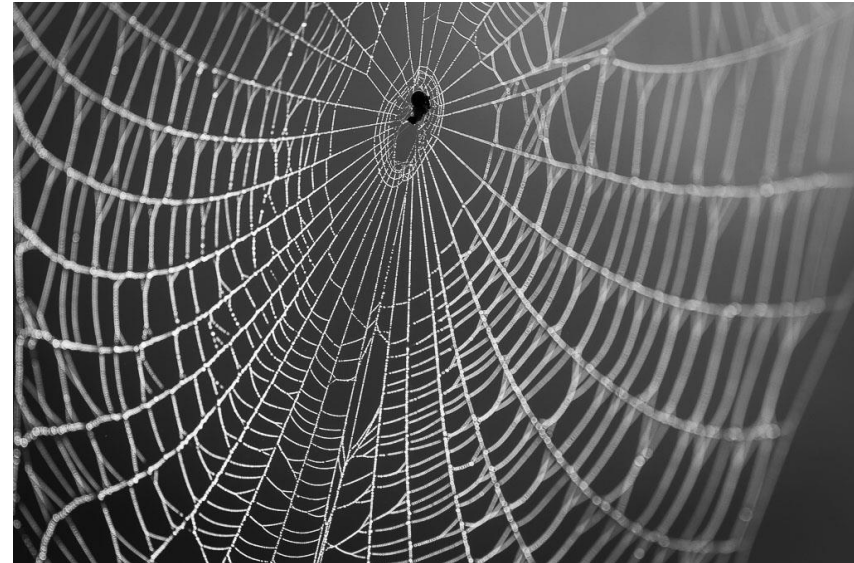


# Changing times?

## Golden thread



## Spiders web



# Approach

- Climate change as a cross cutting theme
- Measure baselines
- Identify targets
- Working groups
- Quick wins implemented
- Key external stakeholders
- Reporting annually