



JOINTLY OWNED BY



A UK perspective on future waste challenges

Louise Cowan – Director, Local Partnerships



27 May 2025





About Local Partnerships



We are a public sector consultancy, jointly owned by the Local Government Association, HM Treasury and Welsh Government.



We sit within the public sector and work solely for the public sector.



We provide a key interface between local and central government.



We are public sector value and efficacy driven.



We work on accelerating the delivery of major infrastructure, policy and programme support, wider place-making initiatives, and transformation across the public sector ecosystem.



UK perspective on future waste challenges

Overview of the policy landscape across the UK

Impacts on material composition

What else is in the pipeline?

Readiness – how to prepare



Scene setting - policy levers across the UK



Mandatory recycling & consistency frameworks



CE strategies/ waste reduction targets



Zero waste to landfill & decarbonisation



Producer responsibility, bans & taxes



Scene setting - policy levers across the UK



Mandatory recycling & consistency frameworks



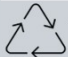

CE strategies/ waste reduction targets



Zero waste to landfill & decarbonisation



Producer responsibility, bans & taxes

	Framework	 Targets
S	Charter & CoP	70% 2025
E	Simpler Recycling	60% 2030
W	Blueprint	 70% '24/25
NI	Future Recycling	70% 2030



Scene setting - policy levers across the UK



Mandatory recycling & consistency frameworks



CE strategies/ waste reduction targets



Zero waste to landfill & decarbonisation



Producer responsibility, bans & taxes

	Strategy	Reduction	Food waste
S	Making Things Last	15% by 2025 (2011 baseline)	33% by 2025 (2013 baseline)
E	<i>In progress, led by Circular Economy Taskforce</i>	50% by 2042 (2019 baseline)	N/A
W	Beyond Recycling	26% by 2025, 33% by 2030, (‘06/07 baseline)	50% by 2025, 60% by 2030, (‘06/07 baseline)
NI	<i>Draft CES</i>	N/A	N/A

71%



want to see more reusable, refillable and returnable options where they shop.

Scene setting - policy levers across the UK



Mandatory recycling & consistency frameworks



CE strategies/ waste reduction targets



Zero waste to landfill & decarbonisation



Producer responsibility, bans & taxes

	BMW to landfill	Net Zero	ETS for EFW
S	2025 ban	By 2045	✓
E	<i>Planned 2028</i>	By 2050	✓
W	<5% by 2025	By 2050 (public sector by 2030)	✓
NI	<10% by 2035	By 2050	✓

Scene setting - policy levers across the UK



Mandatory recycling & consistency frameworks



CE strategies/ waste reduction targets



Zero waste to landfill & decarbonisation



Producer responsibility, bans & taxes

	pEPR	DRS	SUP	SU vapes	P tax
S	✓	✓	✓	✓	✓
E	✓	✓	✓	✓	✓
W	✓	✓	✓	✓	✓
NI	✓	✓	✓	✓	✓



What impacts might we see on our waste streams?

1. Reduction of unnecessary packaging and more recyclable & reusable packaging – driven by ecomodulation/pEPR





Bottles rented by producers rather than owned?

Used by 28 breweries



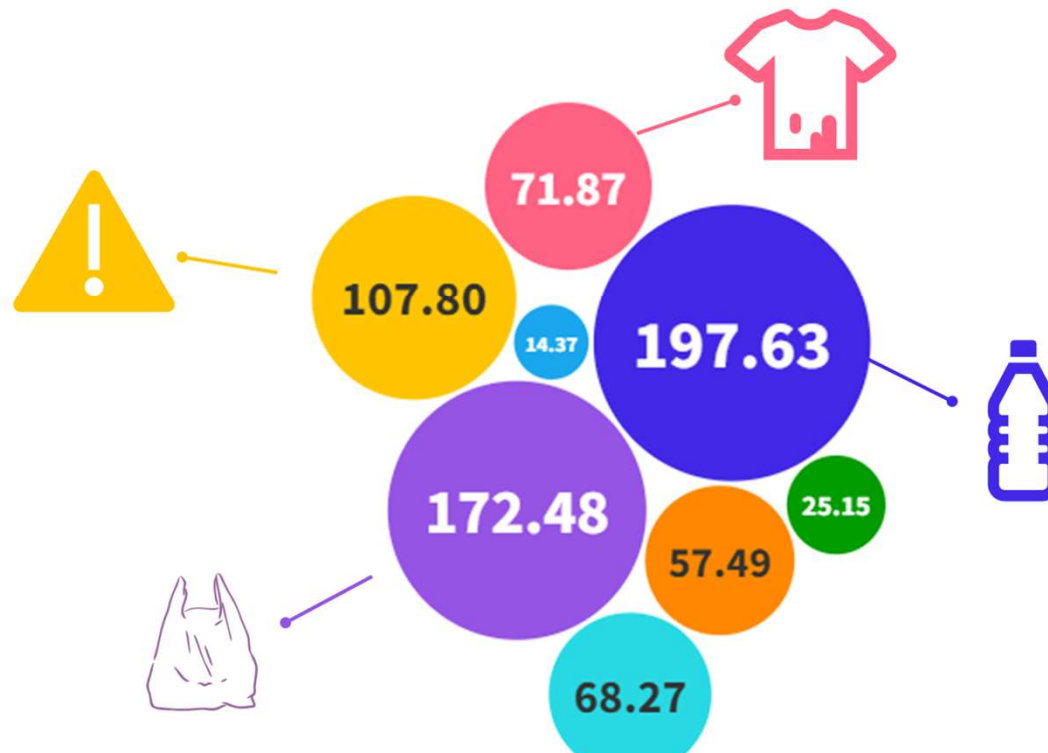
What impacts might we see to our waste streams?

2. Targeting of high fossil carbon materials e.g. plastics incl films, WEEE, textiles – driven by ETS

ETS Costs by material (£/t, 2028 central forecast)

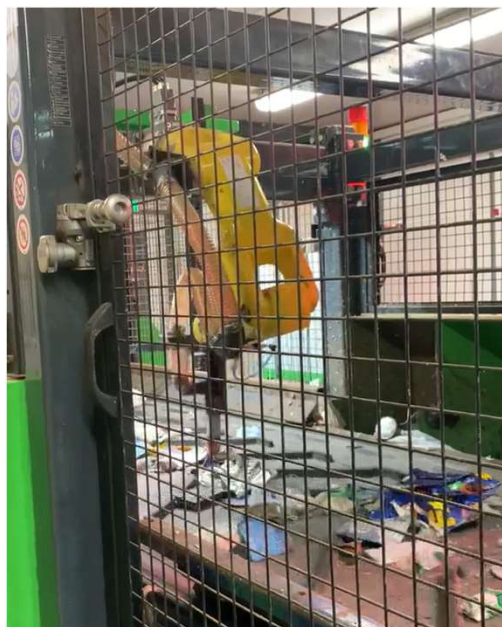
■ Dense Plastic ■ Plastic Film ■ Textiles ■ WEEE ■ Hazardous ■ Wood
■ Misc combustible ■ Misc non-combustible ■ Fines

0.5 ∞ 1



What impacts might we see to our waste streams?

3. Tracking of products through supply chains and waste streams – AI and machine learning



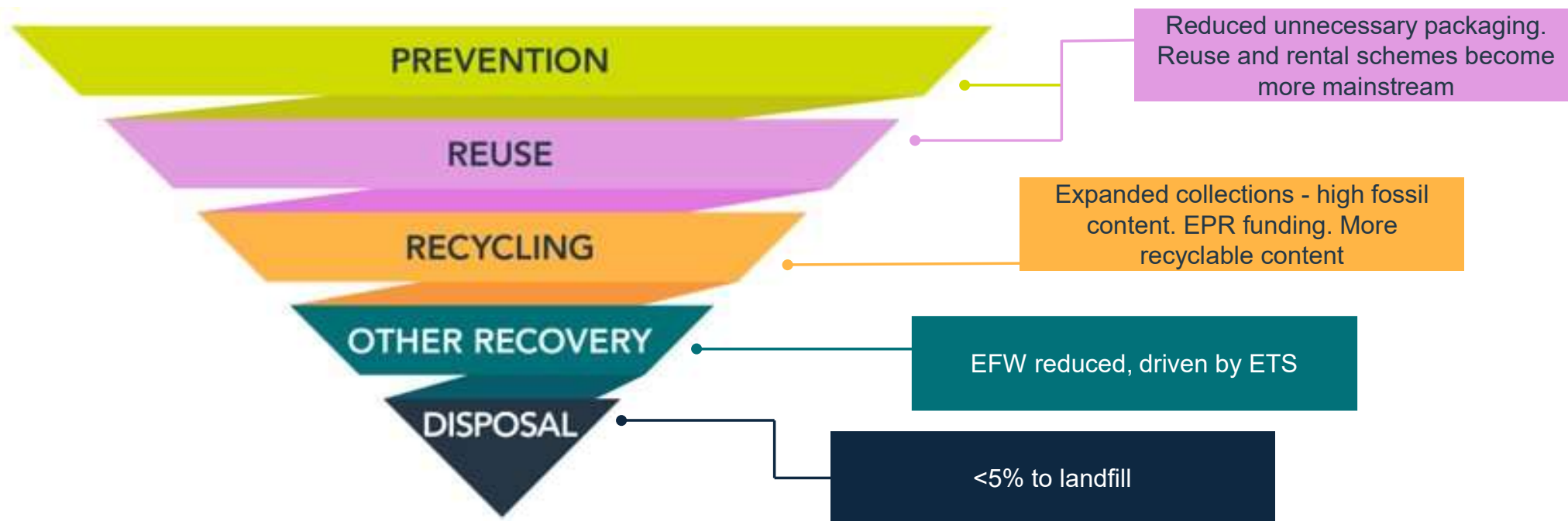
What impacts might we see to our waste streams?

4. What is the role for LAs for reuse schemes?

▲ Innovative collections



Future profile





Readiness – how to prepare

1. **Understand your services** & potential cost exposure over time (it's unique to each authority), and contractual position:
 - ▲ Monitoring – resources & composition
2. **Be aware of the impacts** that future policies could have on your services
 - ▲ EPR, DRS and ETS will utilise financial, responsibility levers and targets to reduce waste arisings, shift materials from residual to recycling, shift the composition
3. **Be aware** of unknowns and be mindful of updates
4. **Develop** your **mitigation plan**
 - ▲ How can you make your service resilient to changing waste profiles?



Check out our free resources available on our Resource Hub:

www.localpartnerships.gov.uk



Navigating waste policy toolkit and webinar replay



Zero Waste Webinar – FREE WEBINAR: Smarter Streets, Cleaner Communities



Launch of the Commercial Waste Toolkit for enhanced service delivery



Presented by



Louise Cowan
Director

07402 235 095 • louise.cowan@localpartnerships.gov.uk



Sign up to our newsletter

Follow us on:  [local-partnerships-llp](#)  [@LP_localgov](#)



JOINTLY OWNED BY

