

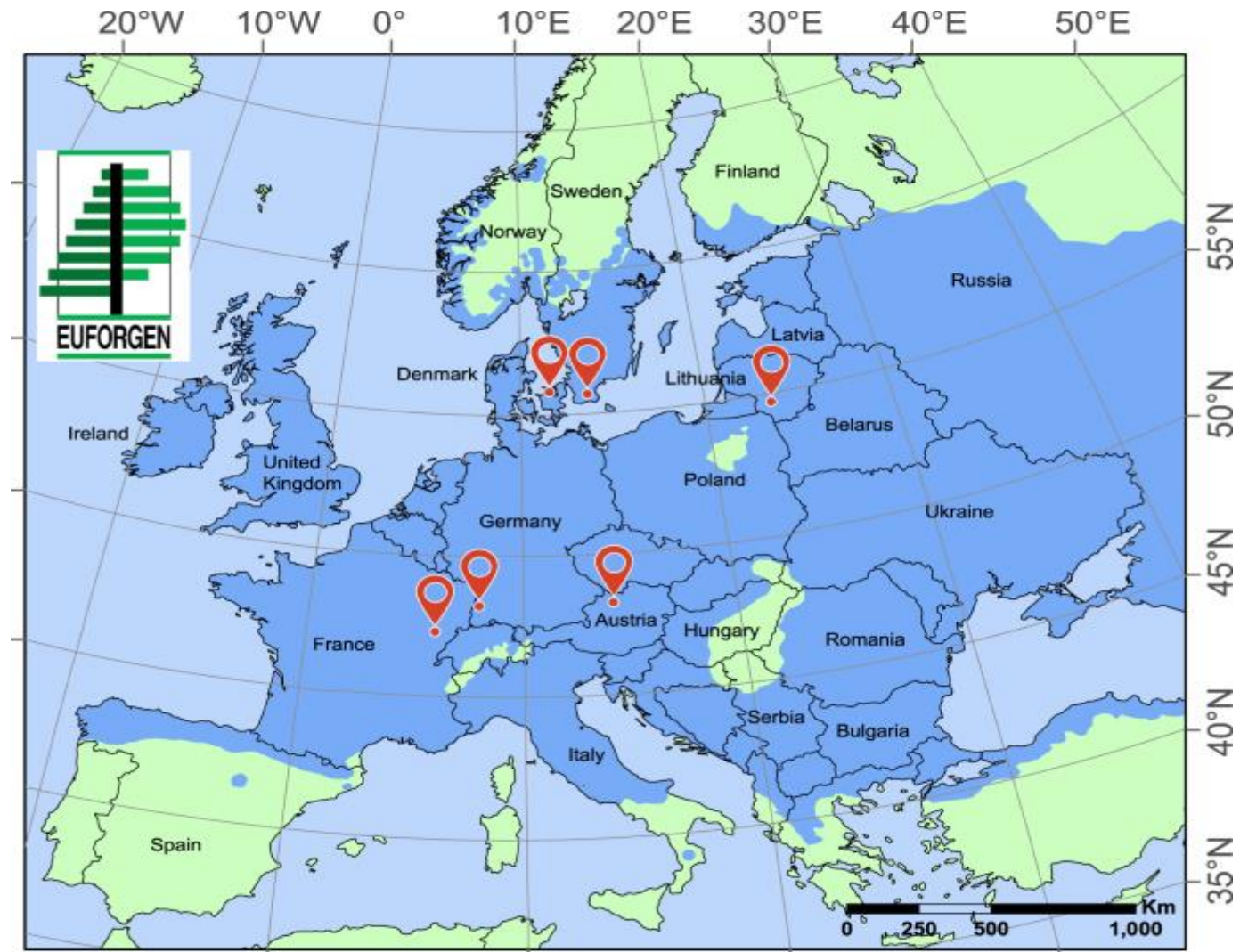
Ash dieback – What to  
do...!!!



# Whatever you do,

**Don't do nothing....**





*Hymenoscyphus fraxineus* – or - chalara

# the tree council



5349055



UGA1523074



Arboricultural  
ASSOCIATION

[trees.org.uk](http://trees.org.uk)

Municipal Tree Officers' Association



The Voice of Municipal Arboriculture



**defra**

Department for Environment  
Food and Rural Affairs

+ many, many more across the  
country,  
some regional others national

Where to start.....



**Identify.....**





Measure.....  
Quantify.....

Highly destructive, incurable fungus affecting ash trees that is spreading across the UK  
First case reported in Telford & Wrekin in 2013.

Leaves die back from the ends of the branches, leading to whole branches and eventually the tree dies.

Trees will need to be felled as they become brittle and dangerous





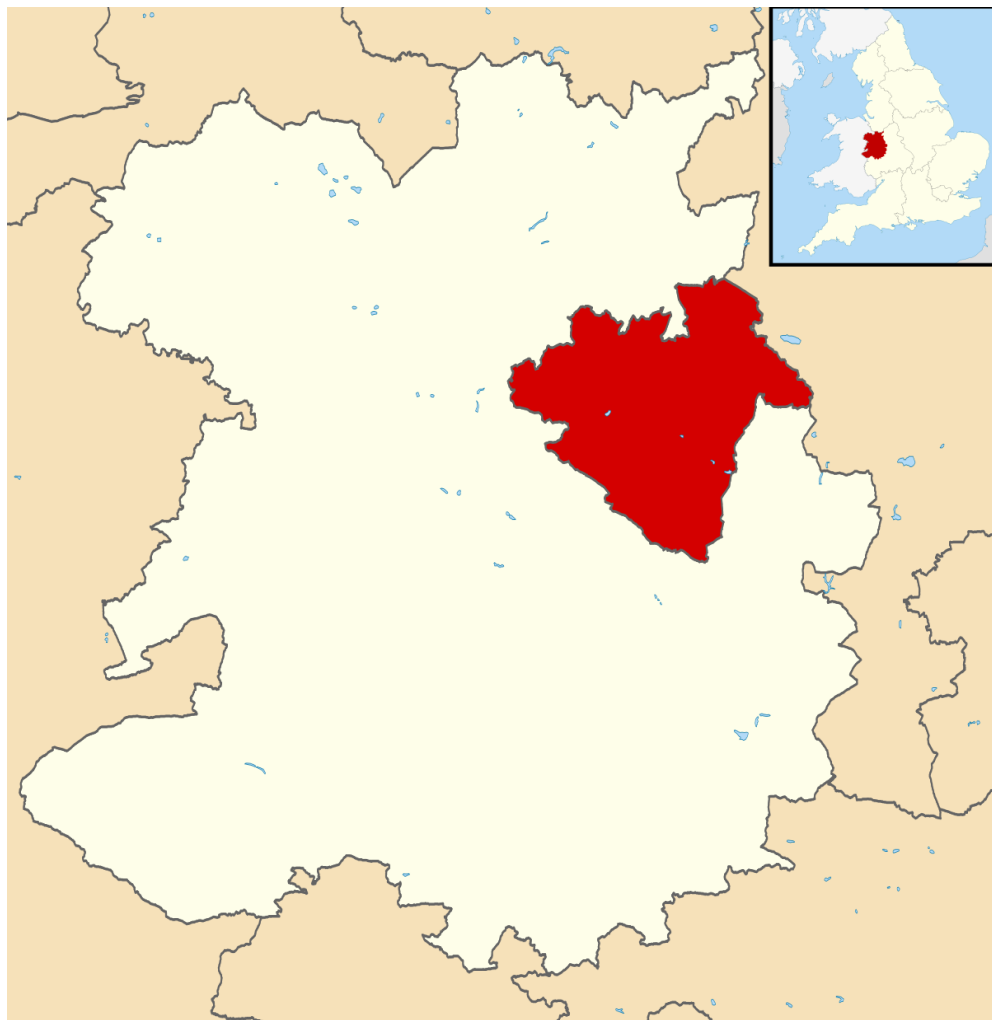
Remember..... You also have a .....

DUTY OF CARE

Not just your land / trees but anything within striking distance of your asset.....!!!!!!!!!!!!



Where there's blame.....



**290.3 km<sup>2</sup> or  
180.3 miles<sup>2</sup>**

We have 626 **miles of road**, 743 **miles of footpaths**, 132 **cycle ways**, 20,000 **street lights**, 120 **roundabouts**, around 400 **parks and open spaces**.

Over 700ha of woodland

Designed as a 'forest city'.

30 million trees planted, 50% success rate...!!!

**In excess of 15  
million trees!!!!!!**



In 2020 we measured the canopy cover across the Borough, by wards and parishes

Canopy % 2020 - Excel

Seabrook, Matthew Share

	A	B	C	D	E	F	G	H	I	J	K	L	M	N	O	P	Q	R	S	T	U
7	5857	College	Complete	18.8	1.75	500	2020		Mseabroo	E05009971	1	1	Urban	30.58003	Telford an	3898371	9587.104				
8	5858	Dawley & Aqueduct	Complete	33.8	2.12	500	2020		Mseabroo	E05009972	1	1	Urban	28.90025	Telford an	9835629	16969.41				
9	5859	Donnington	Complete	16.6	1.66	500	2020		Mseabroo	E05009973	1	1	Urban	27.07408	Telford an	8494360	14985.82				
10	5860	Dothill	Complete	23.6	1.9	500	2020		Mseabroo	E05009974	1	1	Urban	15.47896	Telford an	2822946	9166.848				
11	5861	Edgmond & Ercall Magna	Complete	7.2	1.16	500	2020		Mseabroo	E05009975	1	1	Rural	15.47955	Telford an	3.27E+08	153398				
12	5862	Ercall	Complete	15.6	1.62	500	2020		Mseabroo	E05009976	1	1	Urban	13.21603	Telford an	3574491	9439.994				
13	5863	Hadley & Leegomery	Complete	21.5	1.85	500	2020		Mseabroo	E05009977	1	1	Urban	18.48577	Telford an	17010420	26900.69				
14	5864	Haygate	Complete	12	1.45	500	2020		Mseabroo	E05009978	1	1	Urban	34.56654	Telford an	2382279	11165.46				
15	5865	Horsehay & Lightmoor	Complete	24.4	1.92	500	2020		Mseabroo	E05009979	1	1	Urban	12.7175	Telford an	12245744	20275.58				
16	5866	Ironbridge Gorge	Complete	46.2	2.23	500	2020		Mseabroo	E05009980	1	1	Urban	20.54707	Telford an	16569001	32237.31				
17	5867	Ketley & Overdale	Complete	26.6	1.98	500	2020		Mseabroo	E05009981	1	1	Urban	20.44397	Telford an	15607150	21401.59				
18	5868	Madeley & Sutton Hill	Complete	30.8	2.06	500	2020		Mseabroo	E05009982	1	1	Urban	39.05553	Telford an	19107138	24097.85				
19	5869	Malinslee & Dawley Bank	Complete	31	2.07	500	2020		Mseabroo	E05009983	1	1	Urban	48.95221	Telford an	7328917	13575.3				
20	5870	Muxton	Complete	22.4	1.86	500	2020		Mseabroo	E05009984	1	1	Urban	10.2336	Telford an	24619200	28559.26				
21	5873	Oakengates & Ketley Bank	Complete	26.8	1.98	500	2020		Mseabroo	E05009987	1	1	Urban	26.76554	Telford an	11205031	19637.53				
22	5874	Park	Complete	13.6	1.53	500	2020		Mseabroo	E05009988	1	1	Urban	18.43139	Telford an	1879358	7306.07				
23	5875	Priorslee	Complete	23.8	1.9	500	2020		Mseabroo	E05009985	1	1	Urban	6.538645	Telford an	10913345	19850.67				
24	5876	St Georges	Complete	36.4	2.15	500	2020		Mseabroo	E05009990	1	1	Urban	22.33723	Telford an	5365759	13237.36				
25	5877	Shawbirch	Complete	23.4	1.89	500	2020		Mseabroo	E05009991	1	1	Urban	9.328337	Telford an	2501055	9053.411				
26	5878	The Nedge	Complete	35.1	2.14	500	2020		Mseabroo	E05009992	1	1	Urban	25.66452	Telford an	18111868	22514.81				
27	5879	Woodside	Complete	25.8	1.96	500	2020	Sept	Mseabroo	E05009993	1	1	Urban	52.90807	Telford an	3886518	8685.135				
28	5880	Wrockwardine	Complete	17.8	1.71	500	2020		Mseabroo	E05009994	1	1	Rural	11.94534	Telford an	1.38E+08	92754.95				
29	5881	Wrockwardine Wood & Tre	Complete	13.2	1.51	500	2020		Mseabroo	E05009995	1	1	Urban	21.74729	Telford an	6517333	11453.71				

Sheet1

Ready 10:35 17/05/2021

# A major threat in T&W

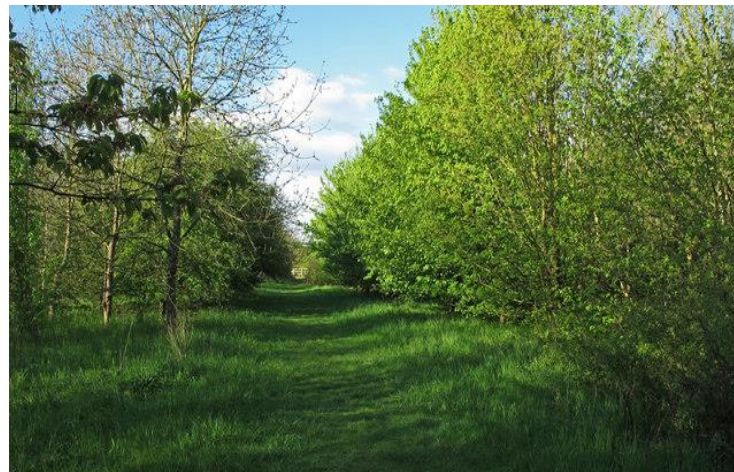
Estimated 35% of tree population is ash, rising to around 42% in the Gorge.

Predicted that all ash trees will die from the disease

Current council resources are not be sufficient to manage the ash dieback

Extra resources required for extensive surveying and felling works

Ash dieback works will be ongoing for a number of years



Raise awareness within your LA / governing body by including within other documents and cabinet reports being submitted;

Tree and woodland policy

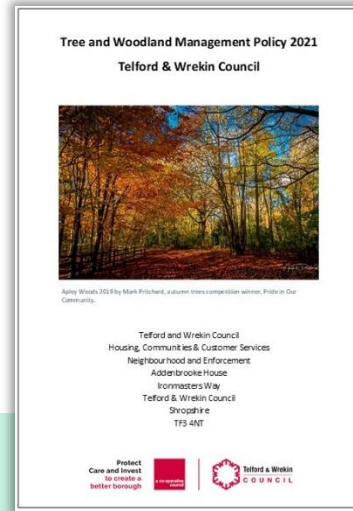
Climate change commitments

Trees bring environmental, social, economic and health benefits

Working with communities to protect green spaces and trees through Green Guarantee sites

Trees4TW scheme launched in November 2020;

Gave away 8,600 trees to volunteers to plant



Toxins infest the trees through the xylem, affecting the structural integrity of the wood, making it brittle. Heavily infected trees must not be climbed and must be made safe with MEWP's, very expensive.

Infected trees become stressed and other diseases then attack the tree further – honey fungus attacks the roots making the tree unstable in the ground.



The longer you leave it, the worse it gets, the more it spreads, the more it will cost...!!!!!!



# How much?

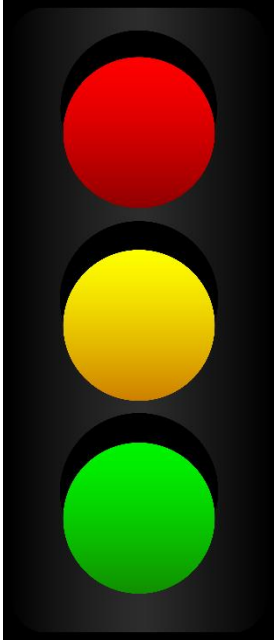


T&W Council currently spend £ half a million a year on our tree asset (which has been approximated as having an asset value of +£1bn)- but this is just for management and safety works!! It's a struggle!!



Tree survey in 2018, risk rating applied to trees -  
High risk trees have been monitored since 2019

## Risk Rating



A roads, high traffic / footfall, routes to schools, bus routes, tourism, estate access roads minimum of every 18 months. Where traffic congregates- r/abouts etc...

B roads, cycle routes, PRW, Parks and Open Spaces (visitor dependant)

Everything remaining – where there is only a minor target area – industrial estates

Different seasons, legally defensible position

Traffic survey data – every 3 years

Every 5 years

At a national level the cost of Ash dieback management in 2019 was £14.8 billion!!

Government funding was available (DEFRA), but this has now been withdrawn – Covid!!

Costs must cover a surveyor and a team to undertake the works -Plus additional equipment and traffic management!!



T&W Council have managed to achieve funding for an initial year for surveying and tree works



And working with other departments and external bodies



Highways



Structures and Engineering

Some developers – section 106 agreements



## Telford and Wrekin

### Ash Dieback

### Action Plan

2019



telford.gov.uk



facebook.com



twitter.com



This action plan is still in the draft stage and we're working now on how best it will be delivered and executed



Severn Gorge  
COUNTRYSIDE  
Trust

Legges Way

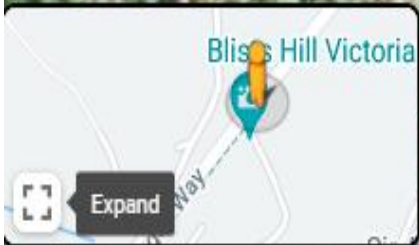
Telford, England



Google

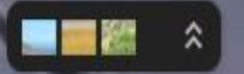


Street View



Legges Way, Madeley 2018

Google





Ironbridge attracts up to 545,000 visitors per year (pre COVID)



Having started the delivery of tree works to combat this disease, the ongoing delivery is still fluid and requires a great deal of work and commitment given the challenges contained within it.

Thank you for your time.



Matthew Seabrook M.Arbor.A – [matthew.Seabrook@telford.gov.uk](mailto:matthew.Seabrook@telford.gov.uk)