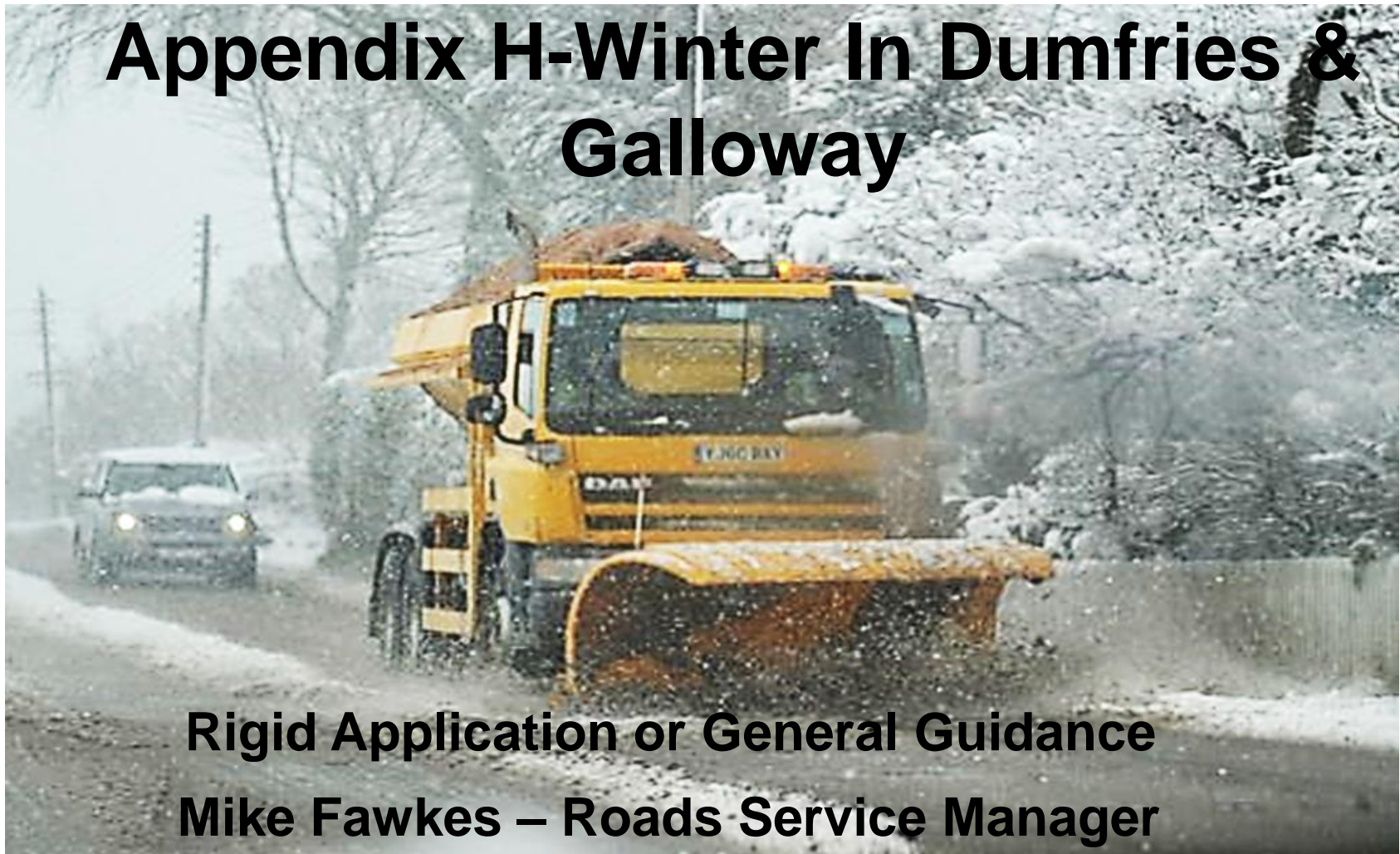


Appendix H-Winter In Dumfries & Galloway



Rigid Application or General Guidance
Mike Fawkes – Roads Service Manager

How do we carry out Winter Operations?

- **Winter Season runs from October to April.**
- **Winter Service Operations Plan**
- **During Working Hours all Office and Manual Staff are available to assist with response.**
 - **12 Technical Staff**
 - **120 Roads Workforce (& 20 additional staff)**

How do we carry out Winter Operations?

- Out with normal working hours a Standby Rota operates, for Dumfries & Galloway;
 - 4 Duty Officers (& 1 Duty Co-Coordinator)
 - 5 Foremen
 - 18 Drivers
 - Second Men (requirement when Snow Ploughing)

What are the main revisions to Appendix H and how can they help you ?

- Salt storage and management
- Vehicle calibration and monitoring
- De-icing materials and technology
- Spread rates for precautionary salting
- Decision making
- Weather situations – snow , ice , freezing rain
- Extreme cold

- **Common Sense and Good Practice**

Dedicated winter vehicles

Calibration and tracking



Salt Storage - spread rates, resilience & salt management system

- Harthill 3800
- Wayside 1600
- Abercromby 4200
- Barnkirk 2700
- Commerce Rd 1100
- Total 13400



Decision Making

- **Treatment Decisions are made on the basis of Appendix H;**
 - Gives framework for decisions
 - Legal perspective on decisions

24 HOUR SUMMARY FORECAST FOR DUMFRIES AND GALLOWAY COUNCIL

FORECAST FOR 20/01/2010 12:00 TO 21/01/2010 12:00

Headline	RSTs below zero. Occasional light snow
Confidence	HIGH

General Synopsis

Cloudy with further rain at times this afternoon, possibly falling as sleet or wet snow across higher routes. Further drizzle and occasional patchy light rain/snow flurries during the evening. Becoming drier, clearer and colder after midnight across much of the county, with RSTs falling below zero, leading to ice and hoar frost. Remaining cloudier across the south-west of the county though with RSTs staying above zero here. Mainly cloudy but dry tomorrow morning.

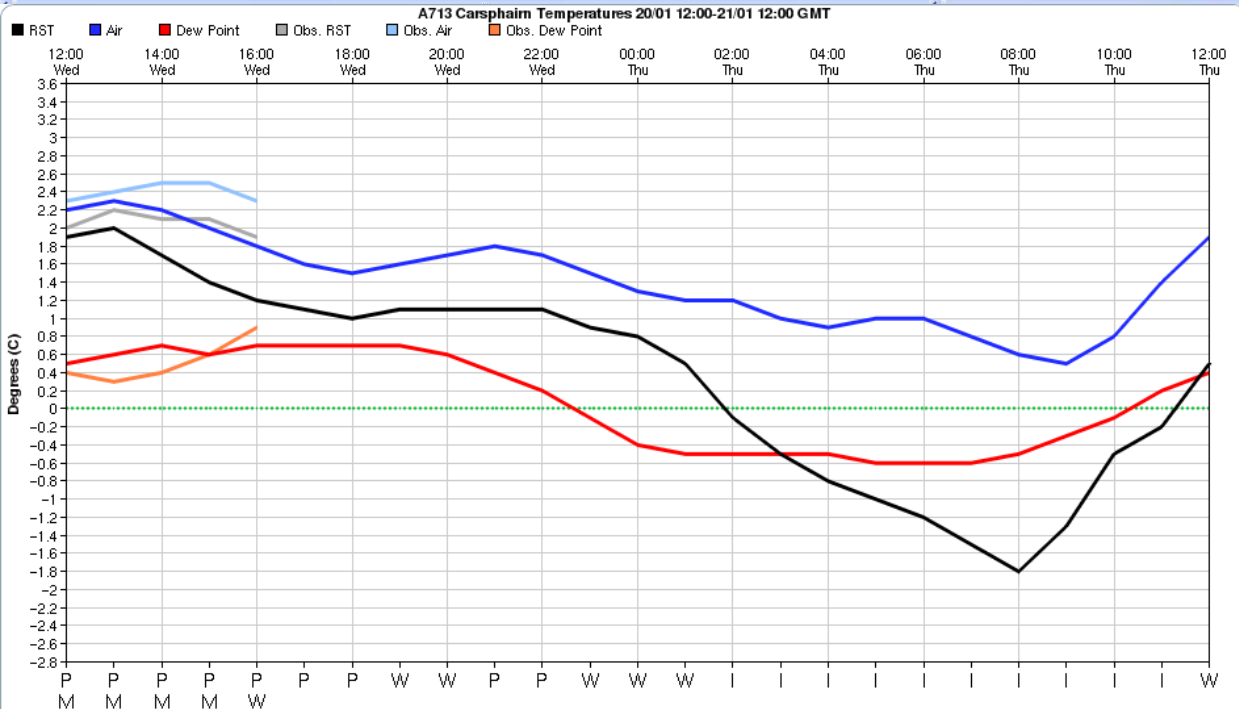
Hazards and temperatures

	D&G Dumfries		D&G Inland East		D&G Inland West		D&G Rhins		D&G Solway Coast	
Readiness Colour	RED		RED		RED		GREEN		RED	
Hoar Frost	01-11	HIGH	00-12	HIGH	00-11	HIGH	N	HIGH	06-08	LOW
Ice	01-11	HIGH	00-12	HIGH	00-11	HIGH	N	HIGH	06-08	LOW
Snow	N	LOW	12-00	LOW	12-00	LOW	N	HIGH	N	LOW
Snow Level (m)	N/A		200		200		N/A		N/A	
Drifting	N	HIGH	N	HIGH	N	HIGH	N	HIGH	N	HIGH
Heavy Rain	N	HIGH	N	HIGH	N	HIGH	N	HIGH	N	HIGH
Fog	N	HIGH	N	HIGH	N	HIGH	N	HIGH	N	HIGH
Freezing Rain	N	HIGH	N	HIGH	N	HIGH	N	HIGH	N	HIGH
Minimum Air Temp	0.0		-1.0		0.0		3.0		1.0	
Urban Min RST	-1.5		-2.0		-1.0		3.5		0.5	
Urban RST period < 0	03-09		03-09		05-09		N		N	
Min RST	-2.5		-3.5		-2.0		2.5		-0.5	
RST period < 0	01-11		00-12		00-11		N		06-08	

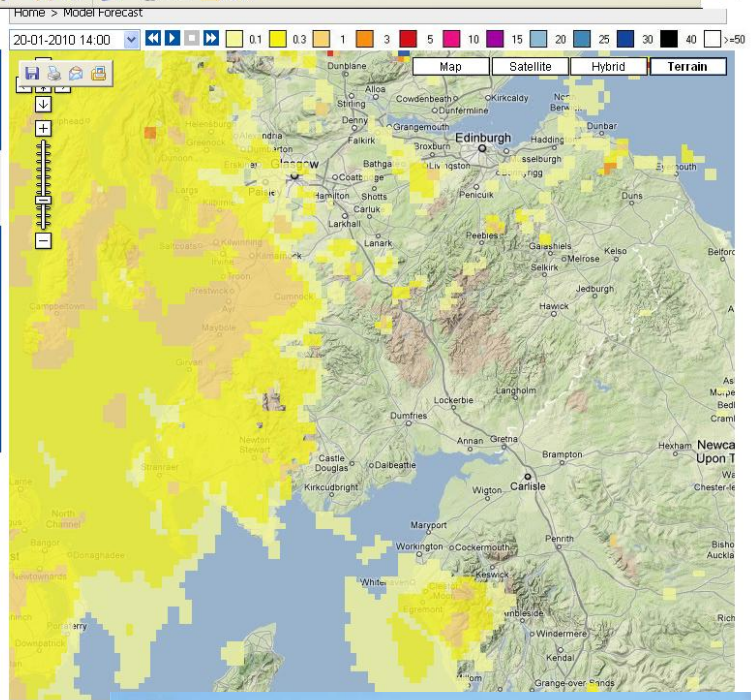
Snow Summary

Light snow is possible above 200m both this afternoon and this evening, but any accumulations will be less than 1cm.

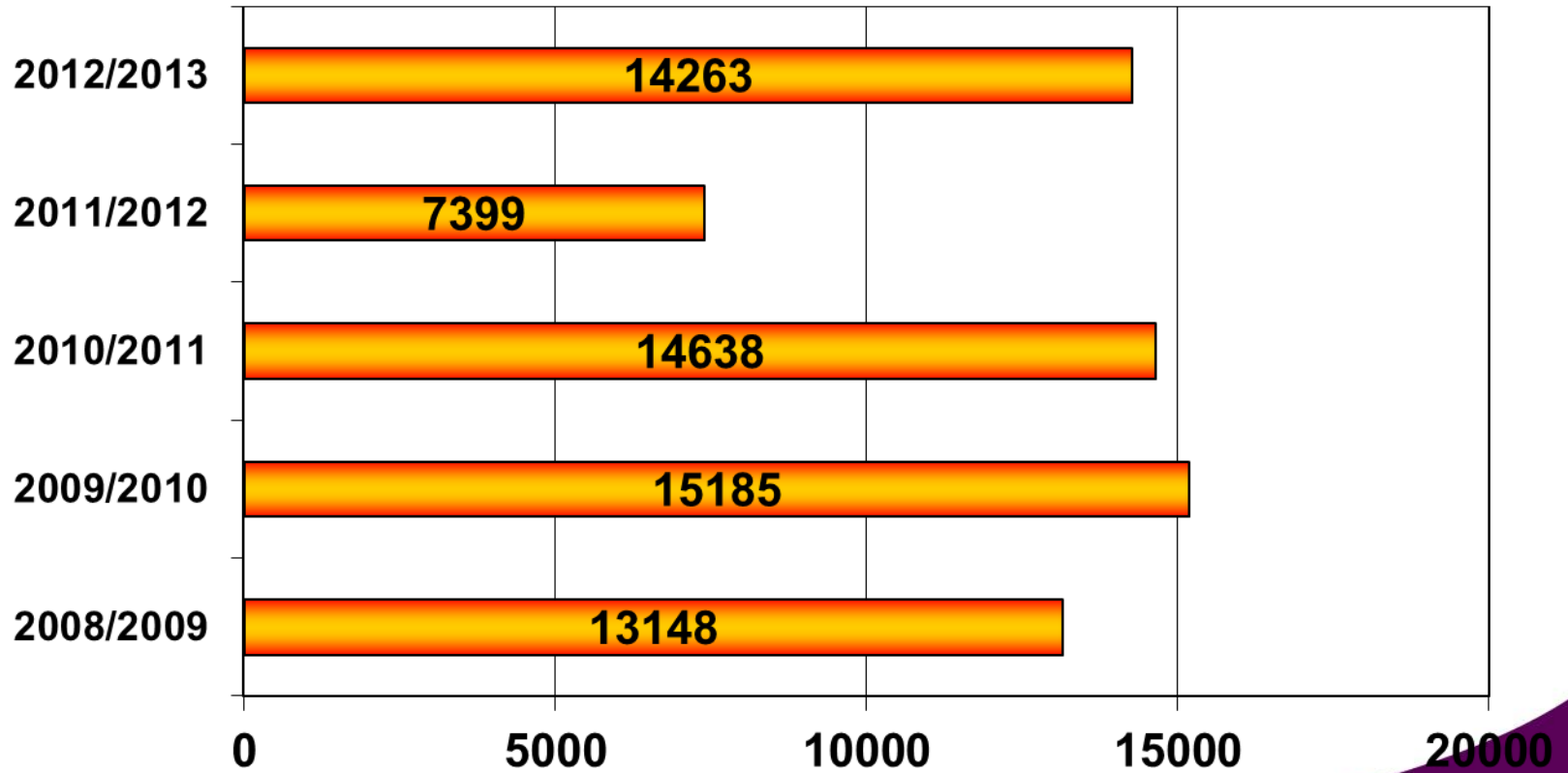
Time Series



- Home
- Forecast »
- Observations »
- Radar »
- Precipitation Type Forecast
- Rainfall Forecast
- Model Forecast**
- Message Board »
- Probabilistic Forecast (EPS) »
- Adverse Weather »
- Maps »
- Satellite »
- Bureau Provider »
- Winter Service Reporting »
- MeteoGroup UK »
- Logout



Salt and Salt/Grit Usage



What has Dumfries & Galloway implemented

- Fleet arrangement(cost)
- Salt storage reviews
- Testing processes
- Calibrations
- Route optimisation
- Driver training
- Better public communication

Results of implementation to date

- Annual Cost savings
- Clear guidance to enhance policy
- Long term improvement through a guidance framework for continuous improvement

Grit Bins

- There are 750 Grit Bins located throughout the Dumfries & Galloway area, including 150 provided through the Community Resilience scheme.
- Grit Bins are primarily there to allow “self help”, out with Primary & Secondary treatment routes, on;
 - steeper urban streets prone to icing
 - busy pedestrian areas
 - in certain rural areas with a concentration of houses

Unimog Snowblower



Appendix H does not have all the solutions



Questions ?