

apse

APSE Northern Forum 2022

Mike Gardner, Local Authority Technical Consultant
WRAP



@apseevents

Resources & Waste Strategy – where are we now?

Mike Gardner – Local Authority Technical Consultant

12th May 2022



wrap

25 year Environment Plan



Resources & Waste Strategy



Environment Act



Environment Act 2021



Statutory Guidance



EPR & DRS regulations

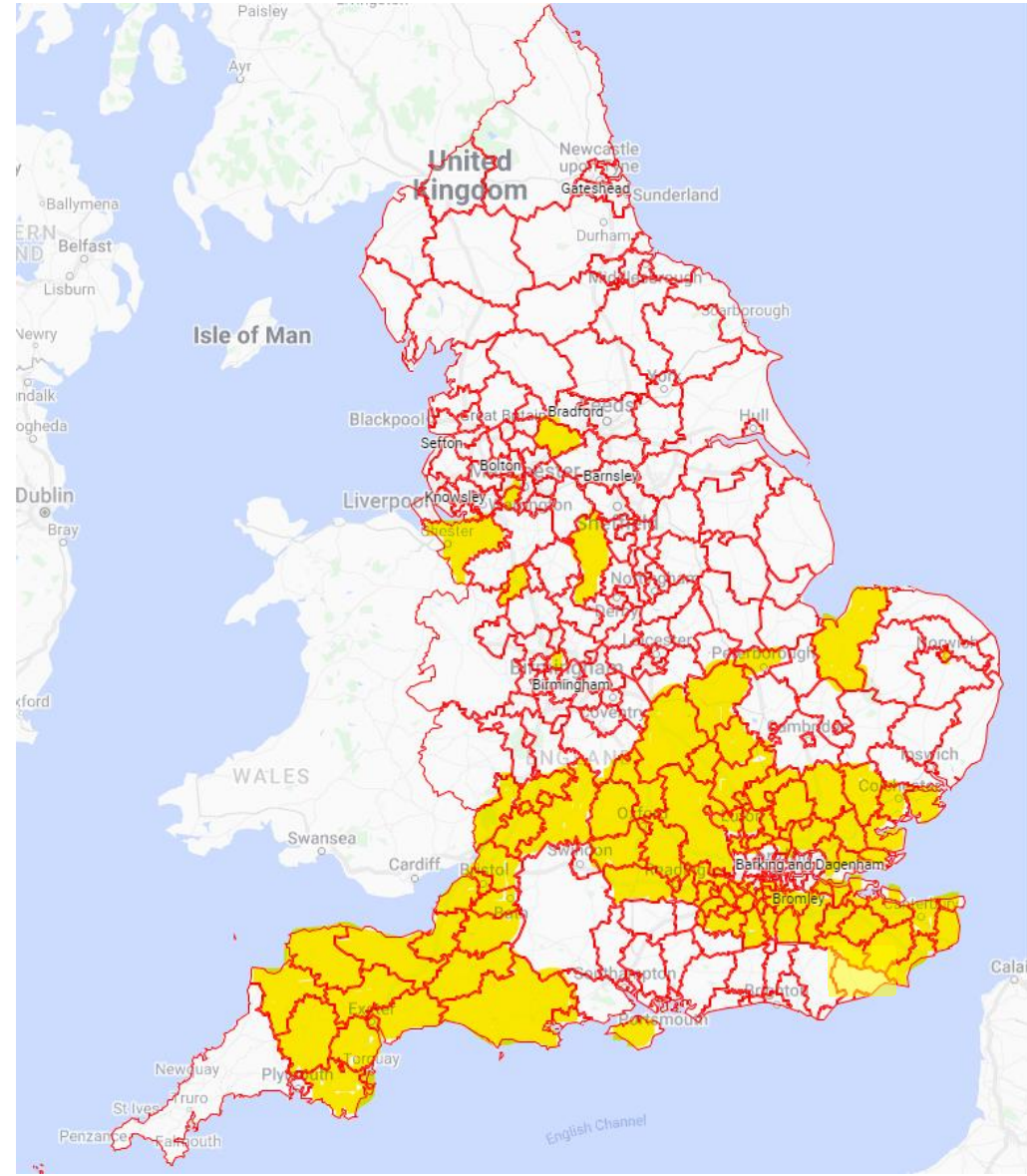


Environment Act 2021

Amendments to section 45 of the 1990 Environmental Protection Act

- **Recyclable household waste must be collected separately from other household waste and must be collected for recycling or composting**
- **Recyclable household waste in each recyclable waste stream must be collected separately, except where:**
 - it is not technically or economically practicable to collect separately
 - collecting recyclable waste streams separately has no significant environmental benefit
- **Recyclable waste streams are—**
 - (a) glass;
 - (b) metal;
 - (c) plastic;
 - (d) paper and card;
 - (e) food waste;
 - (f) garden waste
- **Recyclable household waste within streams (a) to (d) may not be collected together with streams (e) or (f).**
- **Recyclable household waste which is food waste must be collected at least once a week.**

Separate weekly food waste collections – a north : south divide





Environment Act 2021

Amendments to section 45 EPA

Gives the Secretary of State the power to:

- **add further recyclable waste streams.**
- **make provision about the extent to which recyclable household waste in any of those waste streams may or may not be collected together with recyclable household waste in another recyclable waste stream.**
- **Issue guidance about the duties imposed by (the amendments to) Section 45**



Environment Act 2021

Statutory guidance and Minimum service standards

- **The circumstances in which it may not be technically or economically practicable to collect recyclable waste streams separately, or in which separate collection may not have significant environmental benefit.**
- **The frequency with which household waste other than recyclable household waste which is food waste should be collected.**
- **Proposal to provide free garden waste collections.**

3 WEEKLY RESIDUAL COLLECTIONS

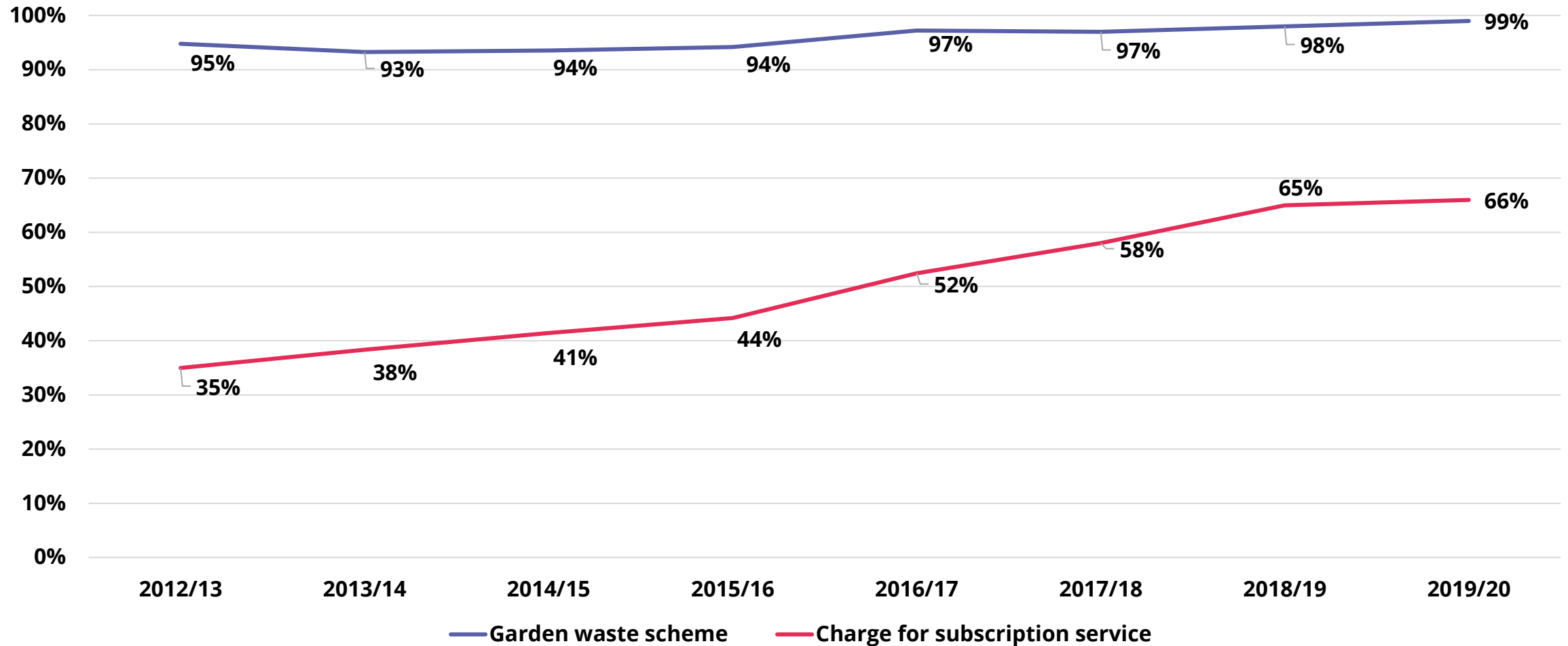
Authority	Residual frequency	Food waste collection
Argyll and Bute Council	3 weekly	Separate weekly to 25% of hh
Blaenau Gwent CBC	3 weekly	Separate weekly
Bracknell Forest DC	3 weekly	Separate weekly
Bury MBC	3 weekly	Fortnightly mixed food & garden
Clackmannanshire Council	3 weekly	Separate weekly
Daventry DC	3 weekly	Separate weekly
East Ayrshire Council	3 weekly	Separate weekly
East Devon DC	3 weekly	Separate weekly
East Renfrewshire Council	3 weekly	Weekly mixed food & garden
Gwynedd County Council	3 weekly	Separate weekly
Isle of Anglesey CC	3 weekly	Separate weekly
Moray Council	3 weekly	Fortnightly mixed food & garden
North Ayrshire Council	3 weekly	Fortnightly mixed food & garden
North Lanarkshire Council	3 weekly	Fortnightly mixed food & garden
Oldham MBC	3 weekly	Weekly mixed food & garden
Pembrokeshire CC	3 weekly	Separate weekly
Powys County Council	3 weekly	Separate weekly
Renfrewshire Council	3 weekly	Fortnightly mixed food & garden
Rochdale MBC	3 weekly	Weekly mixed food & garden
Salford City Council	3 weekly	Weekly mixed food & garden
Wigan MBC	3 weekly	Fortnightly mixed food & garden
Conwy	4 weekly	Separate weekly
Falkirk	4 weekly	Separate weekly

IMPACT OF RESIDUAL WASTE RESTRICTIONS IN WALES

Change	Dry	Separate food	Residual	Overall reduction *
3 weekly residual	+10%	+20%	-19%	-18%
Fortnightly with restricted volume	+15%	+25%	-24%	-15%

* Overall reduction in household waste, including HWRC

PERCENTAGE OF ENGLISH LOCAL AUTHORITIES COLLECTING GARDEN WASTE



Collections hierarchy?

Multi-stream



Two-stream



Comingled



NEW BURDENS

'As part of the new duties imposed on local authorities in the Environment Bill, central Government will fund net additional capital costs (for example containers, vehicles), and transitional costs such as communications and re-routing vehicles, to implement the new consistent collection measures'

'Government will ensure that local authorities are resourced to meet any new burdens arising from this policy, including up front transition costs and ongoing operational costs'.

**GOVERNMENT'S
'NET ZERO STRATEGY'**

October 2021:

£295million of Capital funding 'to allow local authorities to prepare to implement separate weekly food waste collections'



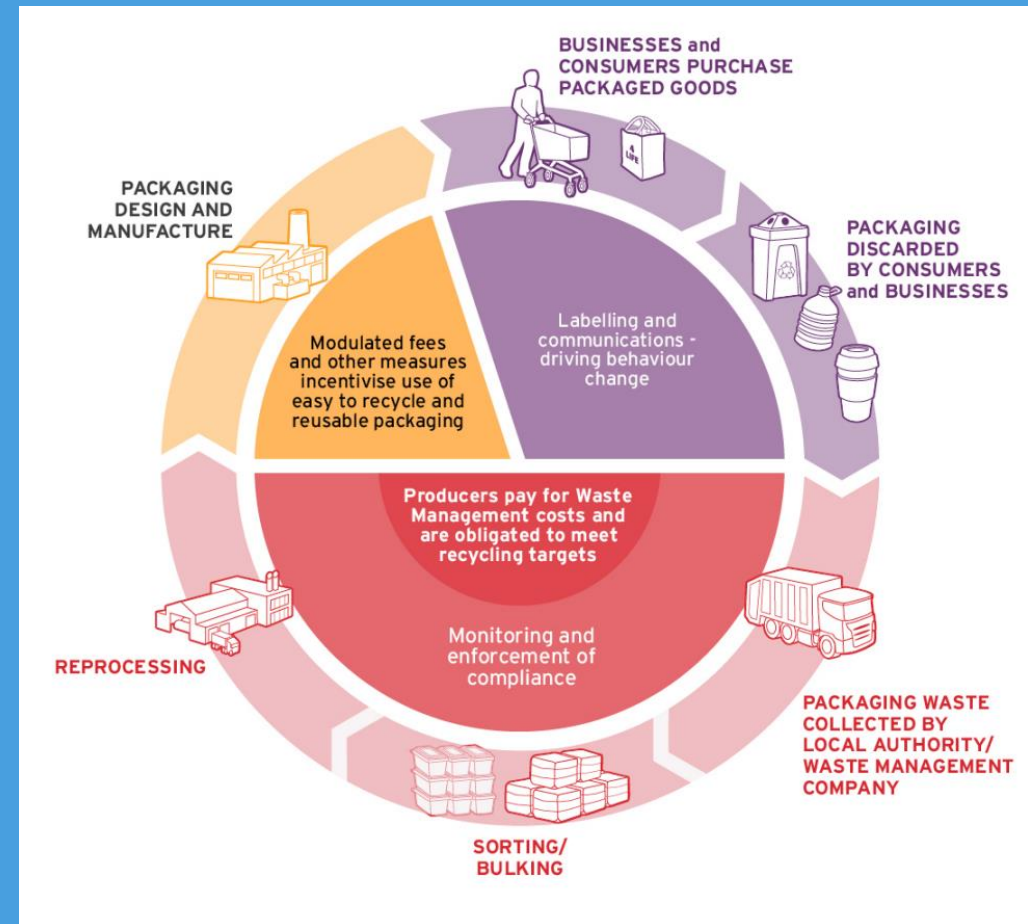
Environment Act 2021

Extended Producer Responsibility

Moving the cost of managing packaging waste from local authorities to producers

Section 50 (Producer responsibility obligations):

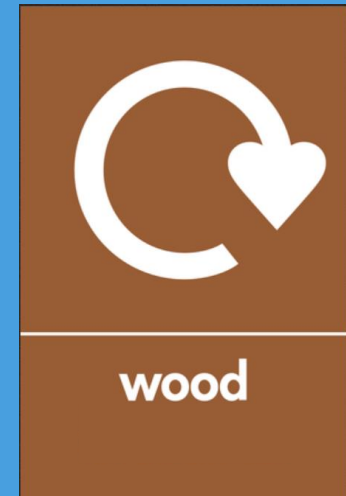
- confers powers on the relevant national authority to make regulations about producer responsibility obligations
- confers power on the relevant national authority to make regulations about the enforcement of regulations



EXTENDED PRODUCER RESPONSIBILITY:

SCOPE

In Scope

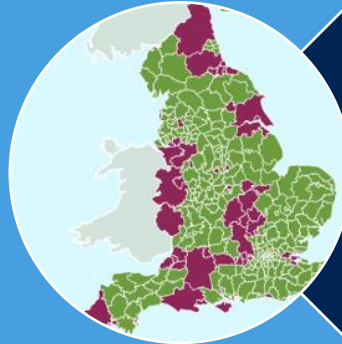


EXTENDED PRODUCER RESPONSIBILITY:

KEY PRINCIPLES



Producer payments
to LAs



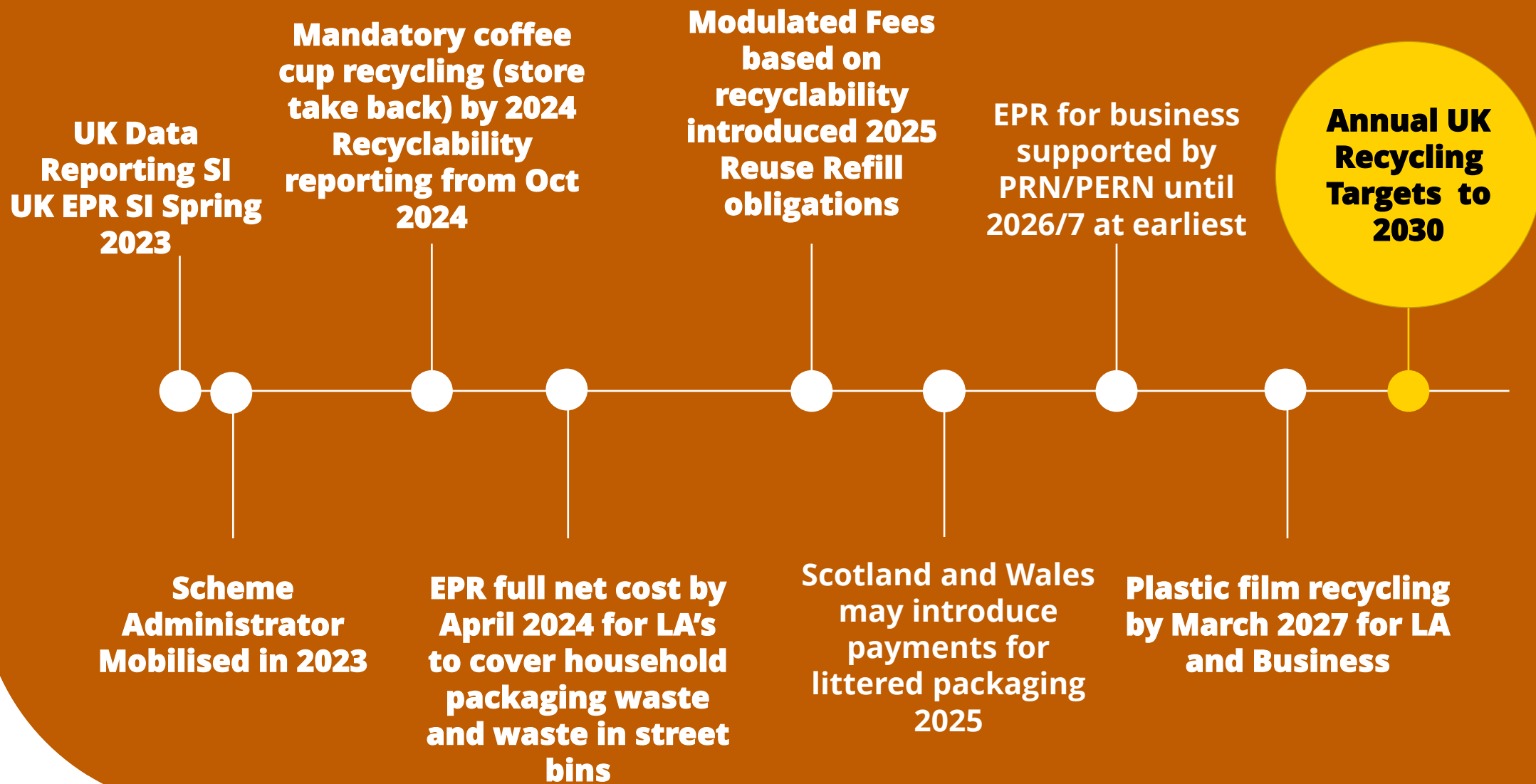
Modelled net costs



Efficient & effective
collections

Govt response to EPR consultation – March 2022

- The Scheme Administrator will be required to distribute payments to LAs for the full net disposal costs of providing **efficient and effective** systems for managing household packaging waste and to demonstrate how these costs reflect local circumstances and policy outcomes.
- The SA will have the ability to model the costs of **efficient and effective** systems or use actual costs in future, where these relate to packaging waste management costs and reflect **efficient and effective** systems.
- We expect that a LA should receive their full net costs where they have taken all reasonable steps to establish **effective and efficient** systems.
- The SA will need to demonstrate that the method used to calculate performance benchmarks is sufficiently robust before considering adjustments. As a result, adjustments, where used, should not be applied in the first year of EPR implementation.
- Govt will continue to engage and work with the sector and LAs in advance of the EPR implementation date to ensure the Scheme Administrator's proposed approach to modelling full net costs under conditions of **effectiveness and efficiency** is transparent, reliable, and reflective of local circumstances and actual costs borne by LAs





Environment Act 2021

Deposit Return Scheme

Section 54 (Deposit Schemes):

- confers powers on the relevant national authority to make regulations establishing deposit schemes.



WRAP DATA REQUESTS

- **Work to identify applicable costs at HWRCs and MRFs**
- **Cost of collections from flats**
- **Cost of collections from 'dispersed households'**
- **LA portal annual update**

WRAP PRIORITIES

- **Food waste (1:1 support)**
- **Service change implementation planning**
- **Updated AWC guide (restricted residual collections)**
- **Dry recycling contamination guide**
- **Website good practice guide**
- **Resources to help elected members understand the RWS**

Contact us

WRAP

Second Floor,
Blenheim Court,
19 George Street,
Banbury,
OX16 5BH
UK

www.wrap.org.uk

+44 (0)1295 819900