

Association for Public Service Excellence – "Making sure your emergency plan and partners are ready for Winter"

Mike Powell MSc FICPEM MEPS
Emergency Planning Manager
Bradford Council



City of Bradford MDC

www.bradford.gov.uk

So why are we involved?

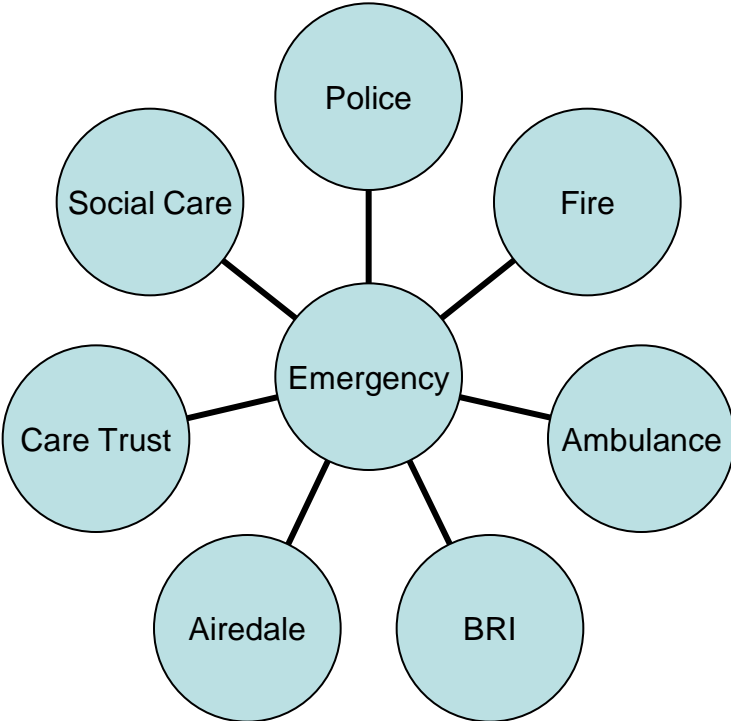
- Affects everyone?
- Welfare?
- Resources?
- Health?
- Reputation?
- Its an emergency?

What is an “Emergency”

- *“an event or situation which threatens serious damage to human welfare;*
- *an event or situation which threatens serious damage to the environment; or*
- *war, or terrorism, which threatens serious damage to security.”*

Civil Contingencies Act 2004

Who can be here?



How does it work?

- Knowing the district
- Knowing colleagues
- Good partnership working
- Integrated Emergency Management
- Good communication
- Met Office liaison and monitoring of conditions

Communications

- Social Media
 - Twitter – Bradford Alert
 - Facebook
- Council Web Site – Current Emergencies Page
- Bradford schools on line
- Local Radio

Why Better Management is Needed.

- Large complex district
- Too many request
- On call Managers only
- Managing gritting
- Managing and prioritising public expectations

Complex District

- Over 500,000 residents
- Sea level to over 1100 ft
- 62% network gritted
- Major routes between hospitals
- Remote communities
- Bus Routes

Request for Help

- Public
 - Contact Centre
 - Out of hours
- Elected Members
- Emergency Services
- Health Community

Health Community

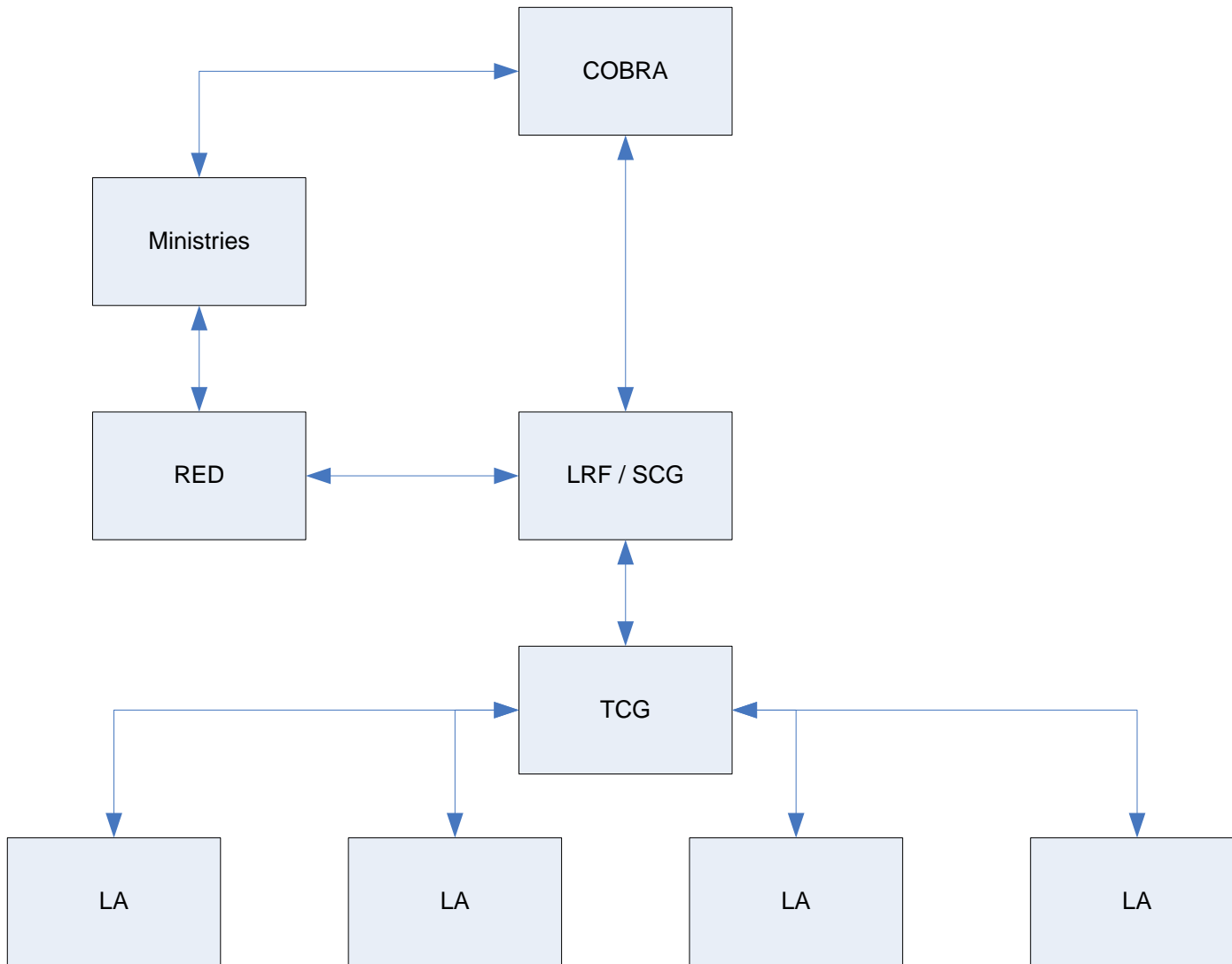
- Oncology and Renal clients
- Care Trust
- Adult and Social Care
- Hospitals

Emergency Services

- Liaison with partners
- Main contact
- Sift requests
- 4 x 4

On Call Manager

- Dealing with routes
- Dealing with social media
- Dealing with gritters
- Dealing with Elected Members



Local Authority

Highways

Streetscene

Neighbourhoods

Adult & Social
Care

BRI

Airedale

Care Trust

CCG's

Police

Fire

Ambulance

Comms

What we can't plan for !

- Public Actions
- Evacuation
- Gridlock
- Magic



Bradford Processes

- Years to implement
- Partners
- Continuity
- Enhancement
- Promotion of National Campaigns... Get Ready for Winter

Thank you

Any questions?

City of Bradford MDC

www.bradford.gov.uk