

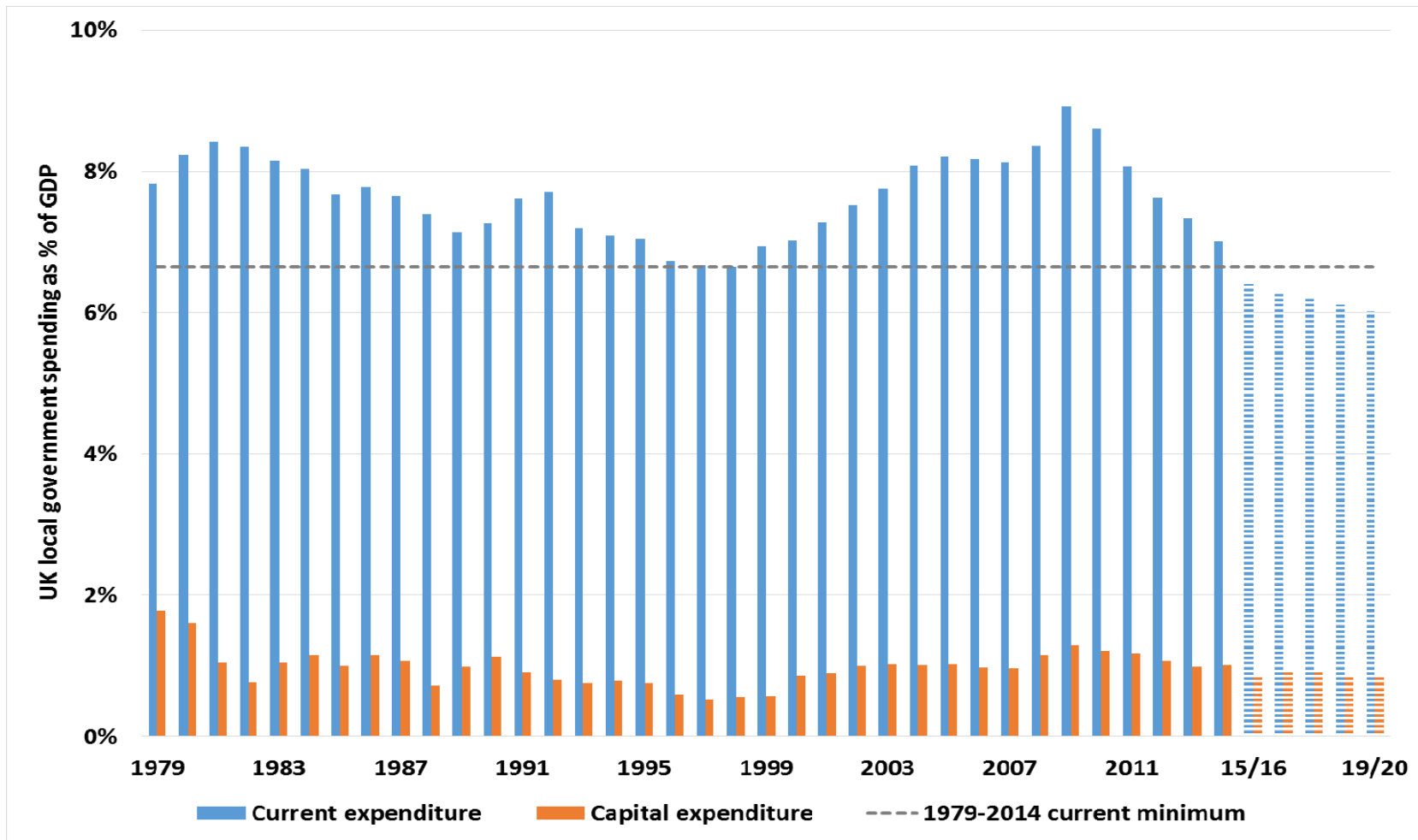


Why we need new sources of income

Mo Baines

**Head of Communication and
Coordination**

UK local government spending as a share of GDP: current spending, already below the 1979-2014 minimum, is projected to go on falling to 2020



What about Wales?



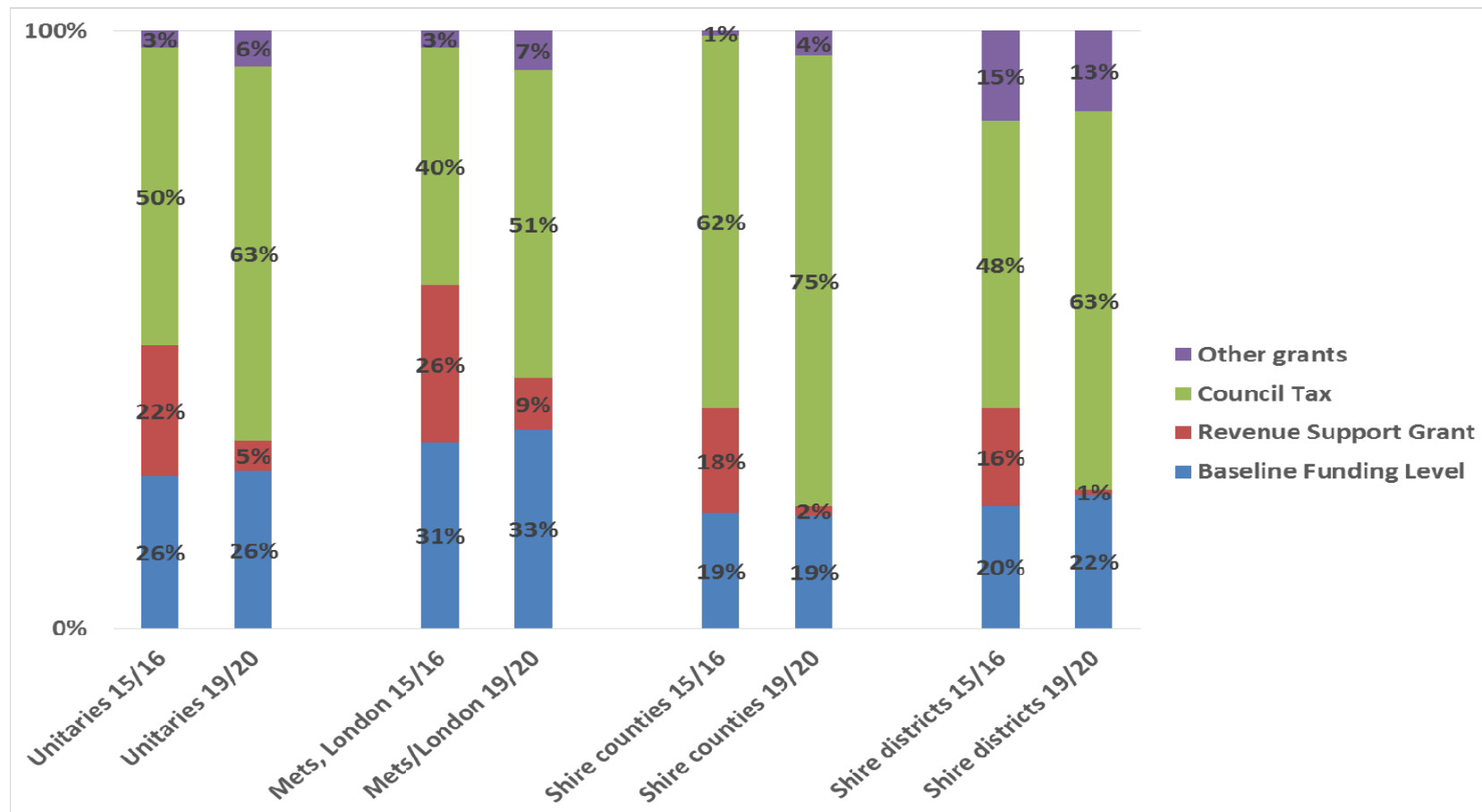
- A fall of £156m
- A shortfall of up to £900m by 2018
- As high as £1.3 billion
- Business rates?
- Council Tax?

Council tax in Wales



- Average band D council tax for Wales for 2016-17 is £1,374. This includes £1,127 for county councils, £216 for police and £30 for community councils.
- County council increases in band D council tax for 2016-17 average £41 or 3.7% over the previous year. Police increases average £6 or 2.8%. These increases combine to produce an average band D rise of £47 or 3.5%.

Balance of core spending power 15/16 and 19/20: as RSG shrivels beyond London and the Mets, most LA funding will come from council tax



Barnett?

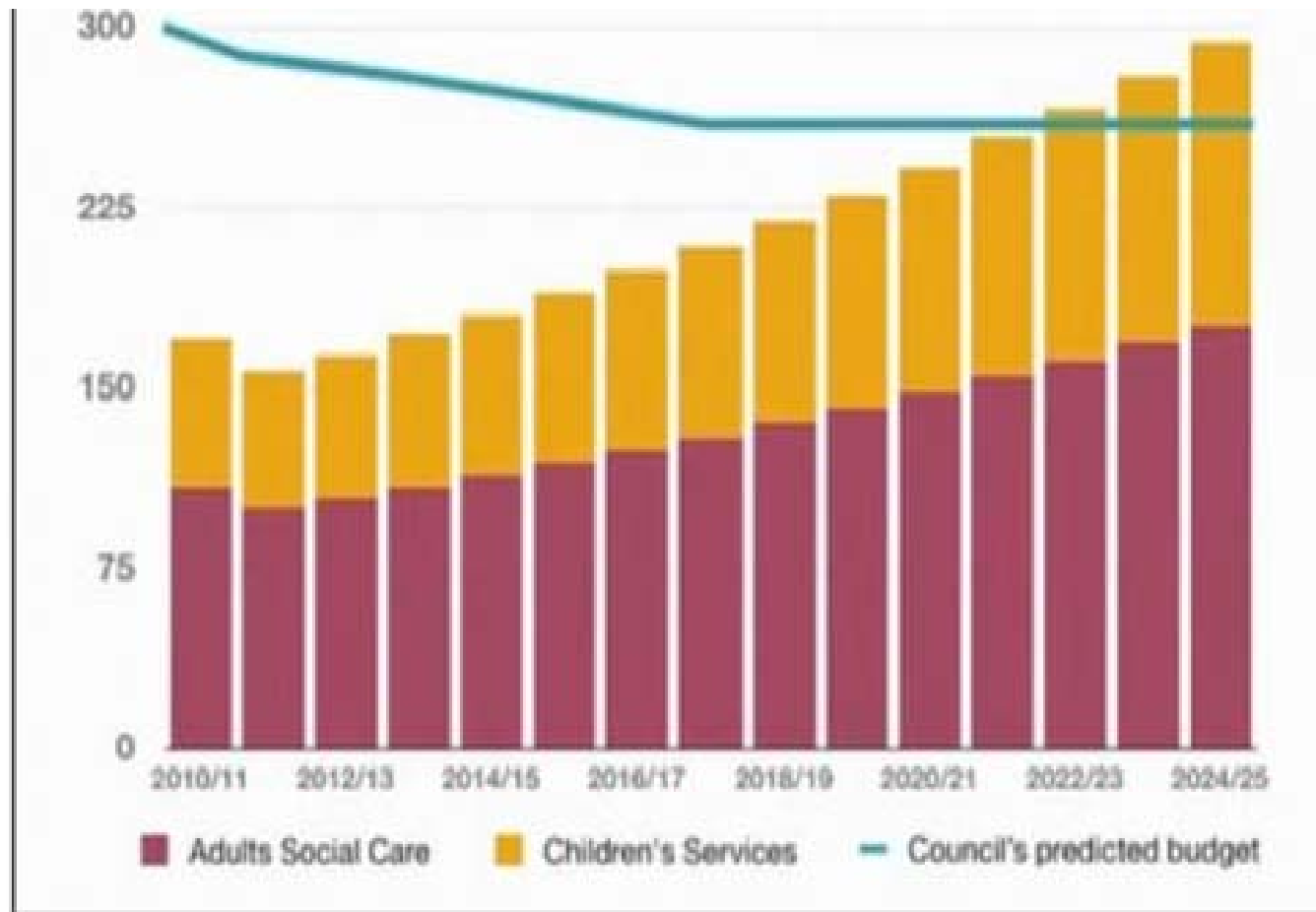


What makes up the funding pie for Welsh Councils?



- 80% Central government grants
- Hypothecated grants
- Council Tax
- Non-domestic rates (Business rates)

The graph of doom..



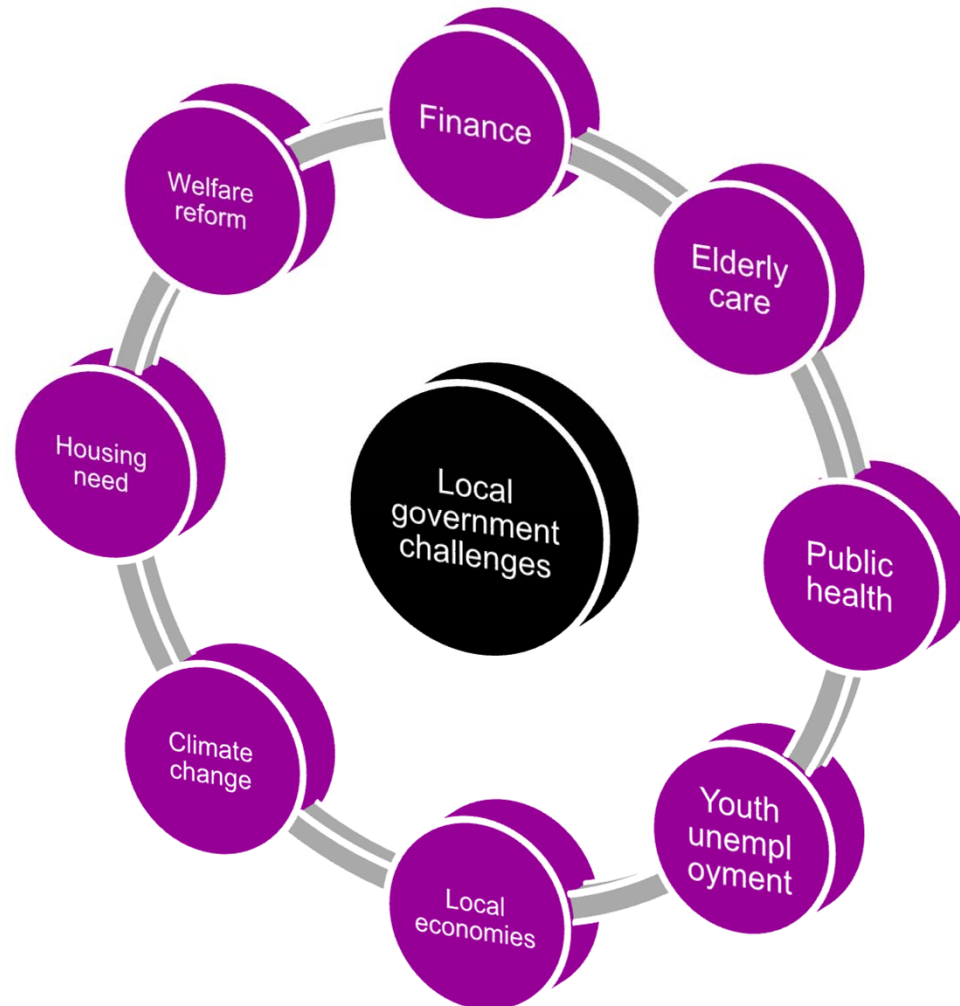
The Big Question



What will local government look like in 2020?



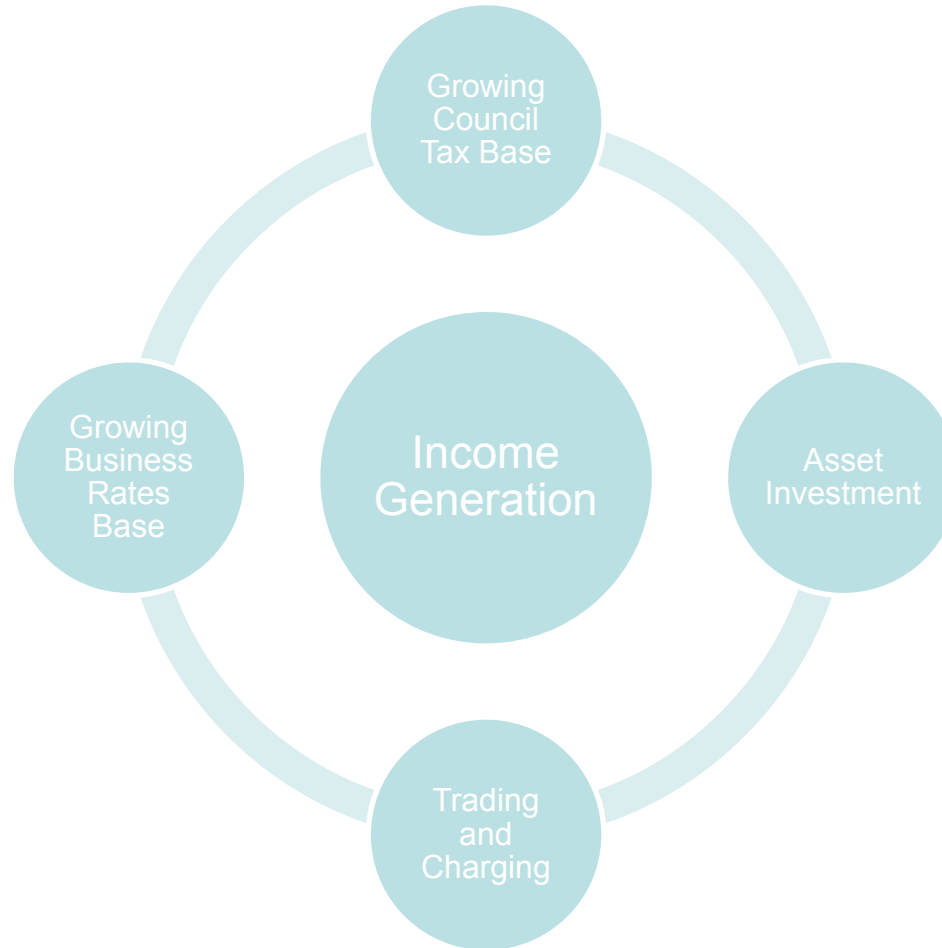
Public policy challenges



Income generation



Commercialisation Strategy



Income generation



80% intend to increase fees & charges over next 2-3 years

- Sports pitch lettings (91%)
- Allotments (70%)
- Festivals/concerts/events (68%)
- Cafes in parks (66%)
- Bowling greens (64%)
- Ice cream vans/mobile caterers (60%)
- Fairgrounds (58%)
- Renting buildings and land (49%)
- Sponsorship (43%)
- Tennis courts (42%)
- Boot camps (32%)
- Mini golf (28%)
- Golf course green fees (26%)
- Sale of land (26%)



56% indicated that they have income generation schemes

- Selling recycling materials (97%)
- Renewable energy (9%)
- Anaerobic digester (6%)
- Solid fuel recovery (3%)



43% answered that they have income generation schemes

- Property clearance
- Private sector cleansing
- Cleansing for developers
- Sponsorship & advertising
- Events e.g. sporting events
- Care of garden charging
- Other in-house sections e.g. parks
- Services to parish councils
- Other public services e.g. NHS



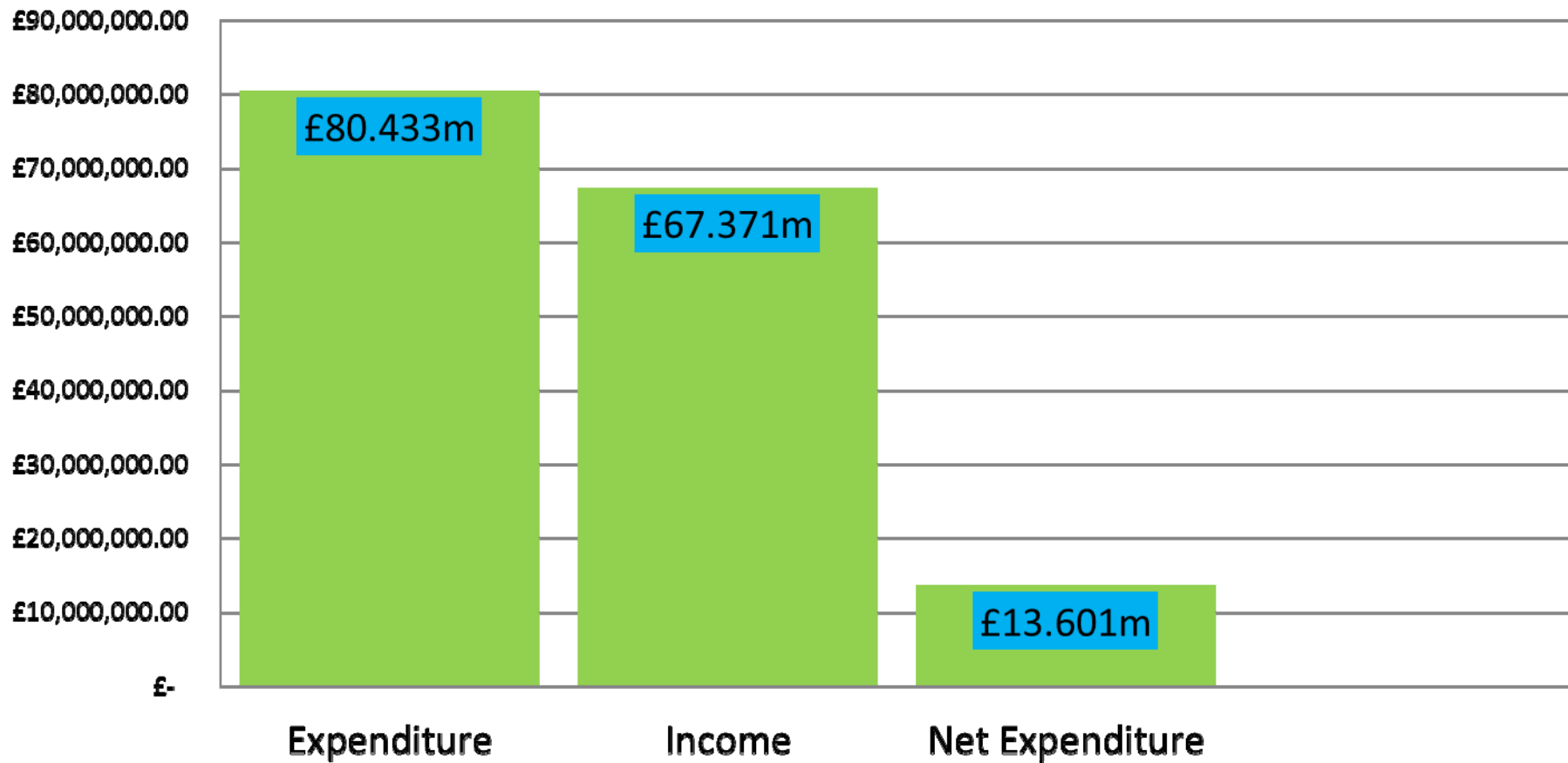
50% currently sell their services outside of the local authority and over 20% considering it as an option

- Taxi testing (53%)
- MOT services (60%)
- Commercial body shop facility (11%)
- Authorised testing facility for VOSA testing (19%)
- Driver training (72%)
- CPC approved training provider (26%)

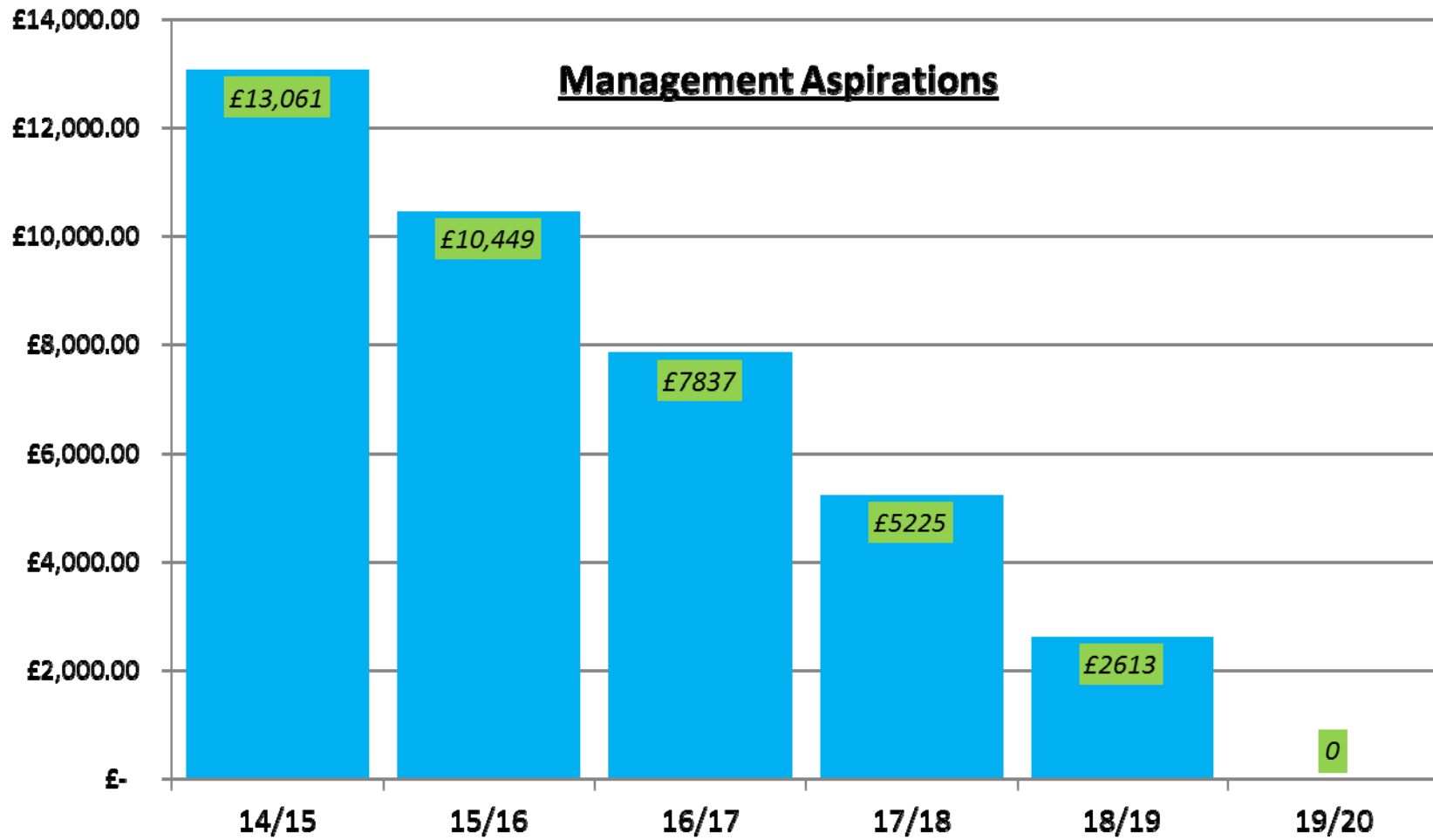
Commercial & Neighbourhood Services – Management Manifesto



2014/15 Approved Budget



Commercial & Neighbourhood Services – Management Manifesto



Local Government (Wales) Draft Bill

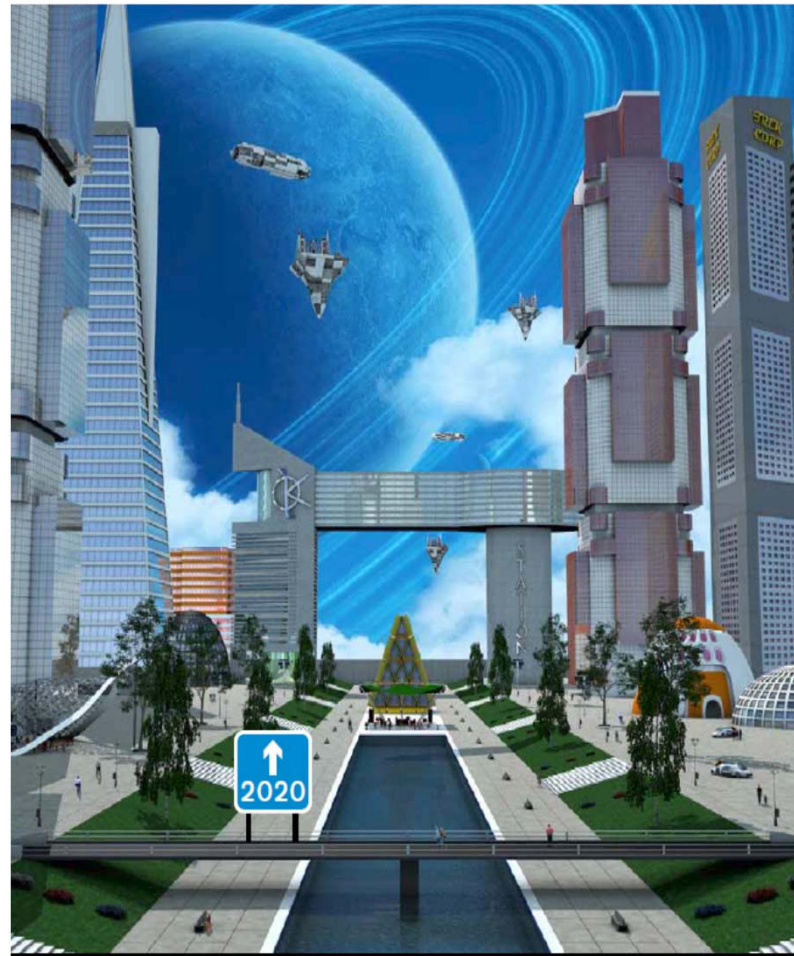


- APSE's response to the consultation
- Reorganise to what?
- Duplication – questions of governance and democracy
- Power of General Competence?
- What do you already have?

Is the Bill throwing down the iron filings?



Where to now?



LOCAL SERVICES

LOCAL SOLUTIONS



Contact details

Mo Baines

Head of Communication and Coordination

Email: mbaines@apse.org.uk

Twitter: [@apseevents](https://twitter.com/apseevents) [@apsenews](https://twitter.com/apsenews)

Association for Public Service Excellence

2nd floor Washbrook House, Lancastrian Office Centre, Talbot Road,
Old Trafford, Manchester M32 0FP.

telephone: 0161 772 1810

fax: 0161 772 1811

web: www.apse.org.uk



INVESTOR IN PEOPLE



GB 11409



GB 11132



GB 14074