

# Climate change and the impact on pest Control

Natalie Bungay, BPCA Technical Manager



# BPCA





# Pest types we may deal with...



**Invertebrates**



**Mammals**



**Birds**



**Rodents**

**WE WILL ONLY TALK INVERTEBRATES TODAY**

# What's an invertebrate?

Living creatures without a backbone and usually an exoskeleton i.e. insects.



**To be successful invertebrates need:**

- Relative temperature between 13°F and 32°F
- Breeding sites
- Food supply.

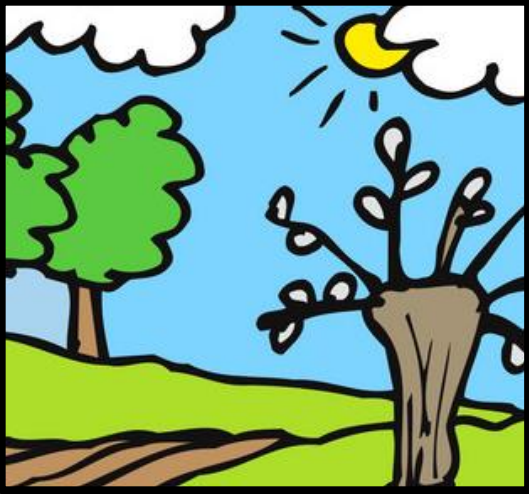
This is important when looking at climate change...





# The usual pattern in the UK - Invertebrates

**Spring**  
(March to June)



**The start of insect activity**

**Summer**  
(June to September)



**The peak of insect activity**

**Autumn** (September to December)



**The decline in insect activity**

**Winter** (December to February)



**Minimal insect activity**







Defined seasons are blurring a little

What does this mean?

Invertebrates will increase/ decrease  
(depending upon the change!)

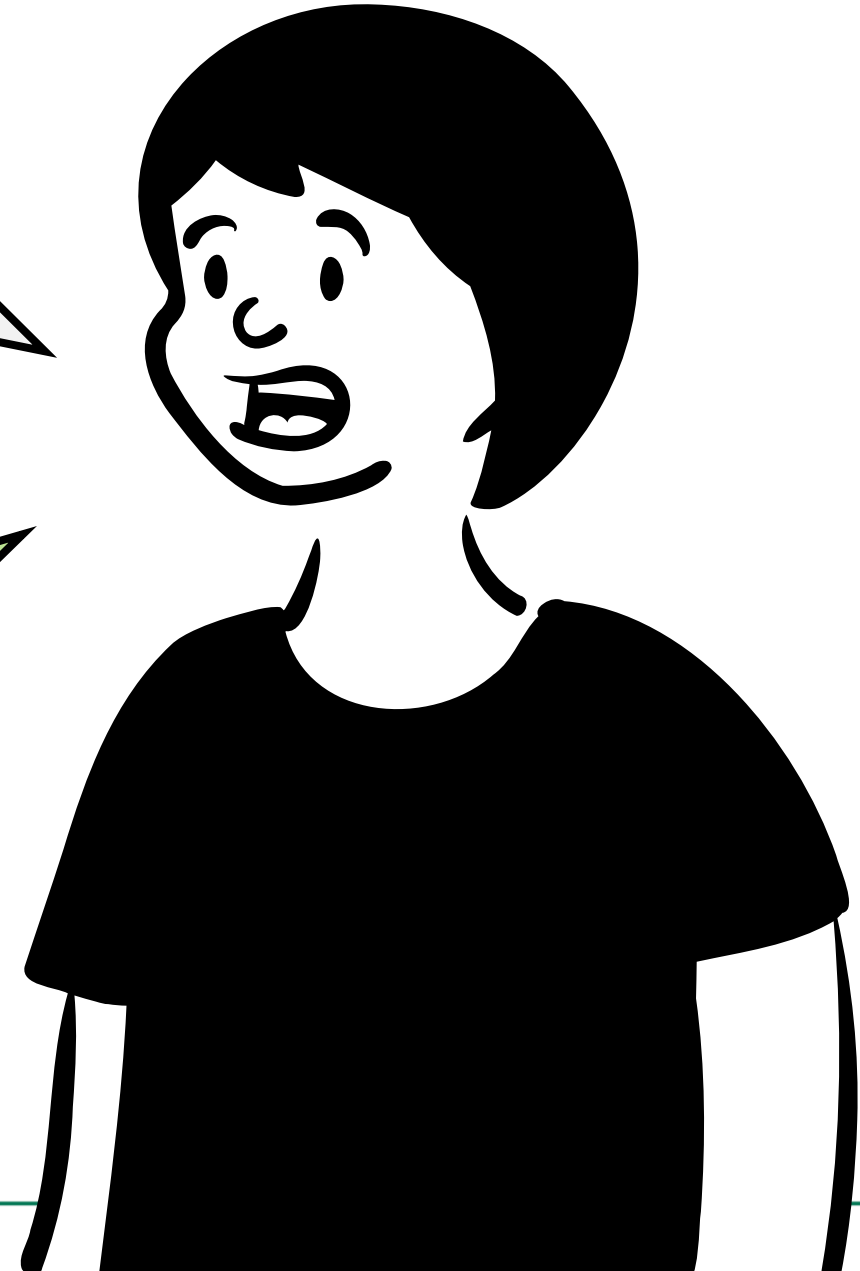


## Summary

So, will climate change affect pest management?

**Yes!**

- New insect species/invasive species
- Larger populations
- Longer "seasons"
- More suitable living conditions outside.





# QUESTIONS OR COMMENTS?

- THANKS FOR LISTENING

