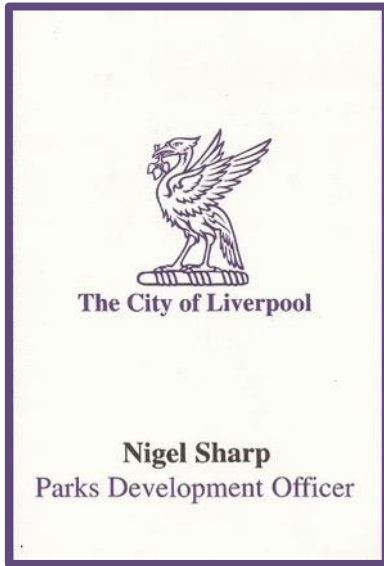


# Parks + People: Stronger Together

The value of parks community networking:  
locally, regionally, nationally

**Nigel Sharp**





# Parks & People: Stronger Together

- an introduction to the NFPGS
- building a national parks community group network
- why network? benefits for all!
- current and future networking - challenges and opportunities

# an introduction

- Founded March 2008 at a meeting of 9 local/town-wide Forums with a combined membership of 398 local Friends groups.
- Originally the National Open Spaces Forum (NOSF), grew to 29 local Forums, representing over 1,500 friends of parks groups
- constituted in Feb 2010

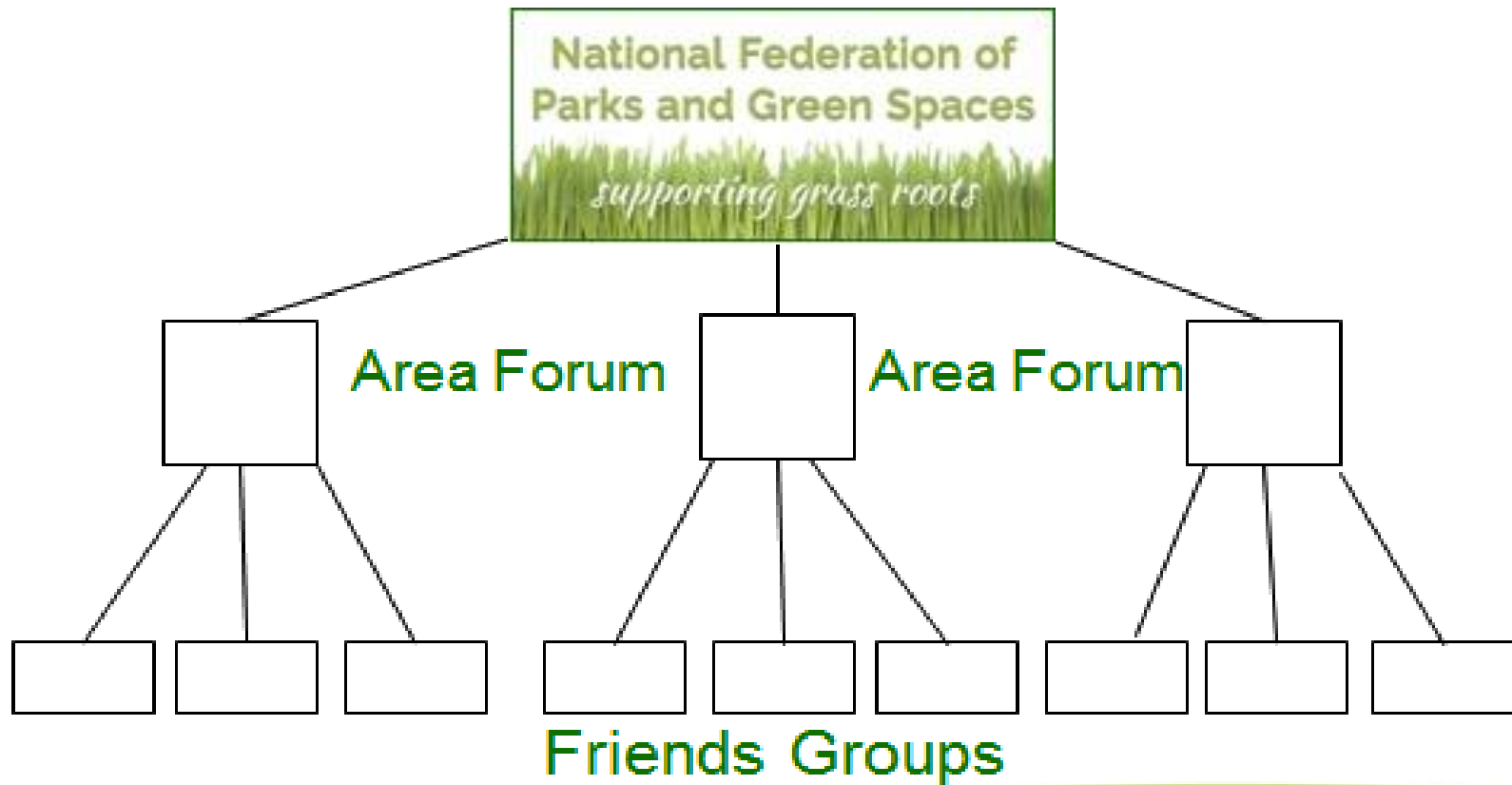


# current overview



- **Grassroots movement** of over 6,000 local groups; 50+ area forums
- **Protect and improve** UK's green spaces
- **Community voice** countrywide
- **Crisis** 'State of UK Parks' Report
- **Campaigning for Adequate Resources**
- **Pressure on government**
- **Networking** and promoting Forums
- **Share** knowledge and information
- **Partnerships** with green space organisations
- **About to become a Charity (CIO)**
- **National, voluntary group**

# Towards a National Network



**local area forums: why network?**

# the benefits

## For the Community

- Share experiences (+ and -)
- Support / mentoring
- Support (resources)
- Joint working
- United voice
- Focus
- Links & partnerships

## For the Local Authority

- Community Contact
  - Consultation
  - Wider links
- Support (e.g. resources, events)
- Support and independent voice
- Focus
  - Single point of contact
  - Coordination
  - Synergy





## Background

- 591 parks & open spaces
- formed in 2005
- a Community Voice
- Not just parks
- Charity Status
- Currently 150 groups
- a network with many partners
- Esmée Fairbairn funds
- Staff
- [www.bosf.org.uk](http://www.bosf.org.uk)

## Activity

- Starting a new group
- Help with funding bids
- enquiries
- Signposting
- Sites under threat advice
- Events & Conferences
- Workshops & Training
- Coffee Mornings
- Monthly Information Sheet
- Newsletter
- Shrub Bed Project
- BeActive
- Nature Improvement Area



- campaign & lobbying
- awareness & advocacy
- advice & information
- research & consultation
  - evidence
  - capacity building
  - social & networking
- communication & coordination
  - involvement & inclusion



LEEDS parks and green spaces forum



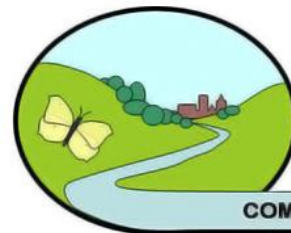
**Wirral Parks Forum**  
wirralparksforum.org.uk



Sheffield  
Green Spaces  
Forum



South West London  
Environment Network



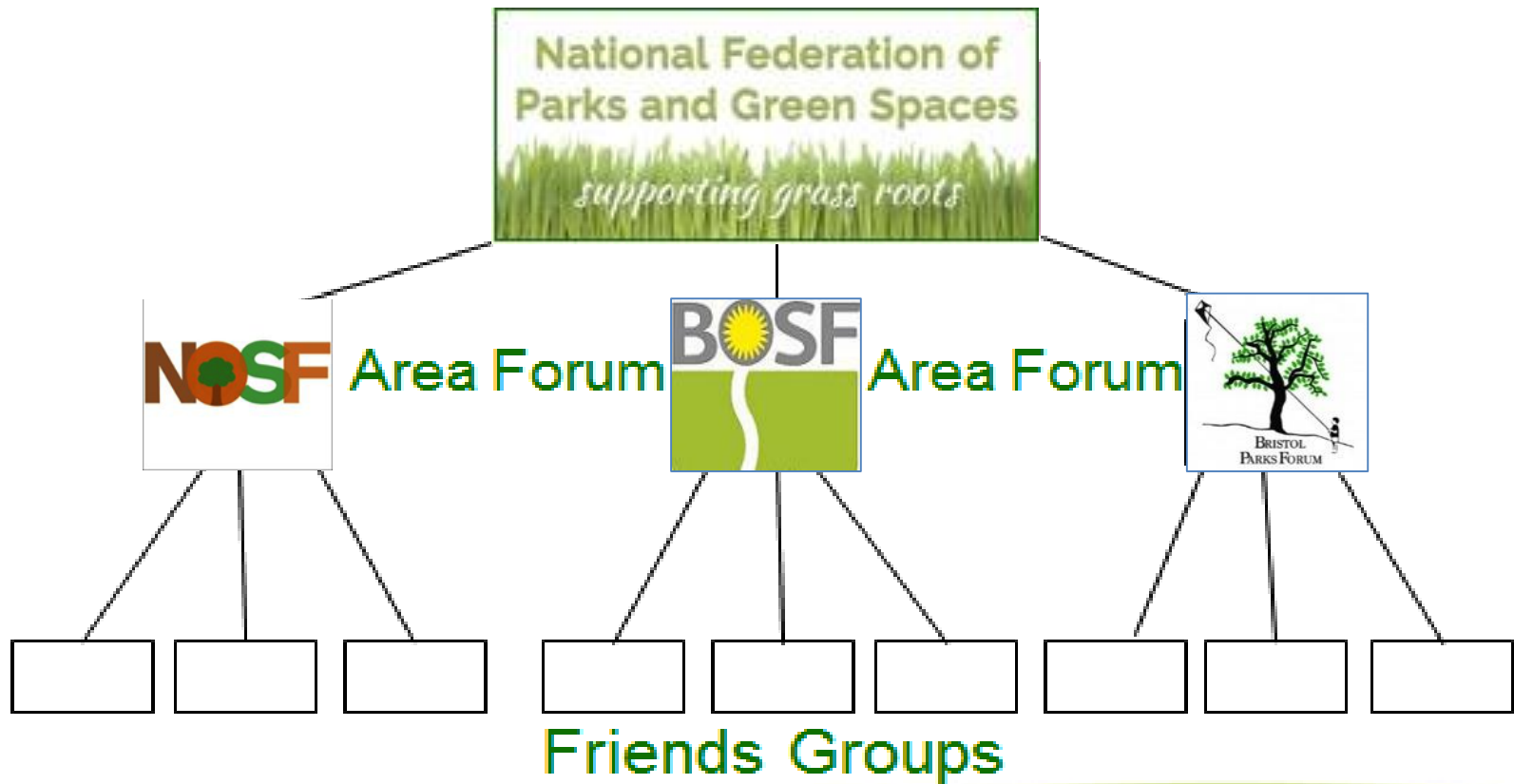
**NATURAL BASINGSTOKE**

COMMUNITY ACTION FOR NATURE



BRIGHTON & HOVE  
GREEN SPACES FORUM

# Towards a National Network



**local forums: wider benefits**

projects, partners, participation



ParkWork, a Bristol Parks Forum initiative, gives the opportunity to those on a route to employment to gain valuable work experience, training and skills

facebook

Email or Phone

Password

Log In

Forgotten account?



ParkWork

@ParkWorkBristol

Home

About

Photos

Community

Reviews

Posts

Info and ads



Like

+ Create fundraiser

Share

...

Send Message

8 photos were posted by other people. [See all](#)

Albums

[See All](#)



Mobile Uploads  
10 photos



Timeline Photos  
79 photos



Coombe Brook valley  
7 photos



Manor Valley Woods  
16 photos

All photos





# BRISTOL PARKHIVE

UWE/BRISTOL PARKS EXCHANGE





# Wirral Parks Forum

wirralparksforum.org.uk

- Meets 4 times a year
- Committee meets more frequently
- Committee as link with Council staff in regular Steering Group meetings
- Chair Wirral Parks and Countryside Partnership & Performance Board (3 times a year).



- Regular meetings with Head of Parks
- Inputs include:
  - Scrutiny Committee
  - Grounds Maintenance Tender
  - Park Keepers Forum
  - Restructure Process
  - Green Places Fund Partnership
  - Birmingham in Bloom
  - Green Infrastructure
  - Adaption & Delivery Group



**regional opportunities- and challenges**

# Summary of Area Parks & Green Space Forums

Current position showing active Area Forums and Networks registered with NFPGS [2018]

Edinburgh  
Glasgow

**North West Parks Friends Forum**  
[Manchester]  
Hyndburn  
Lancaster  
Liverpool  
[Pendle Parks Forum]  
Stockport  
[Trafford]  
Wirral

Cardiff

Birmingham  
Bromsgrove & Redditch  
Coventry  
Dudley  
Sandwell  
Telford  
Walsall



Newcastle  
Sunderland

Doncaster  
Kirklees  
Leeds  
Sheffield  
York

Derby  
Nottingham  
Nottinghamshire

Luton

Bristol  
Exeter  
Plymouth  
Poole  
S. Gloucester.  
Torbay

Adur & Worthing  
Basingstoke  
Bracknell Forest  
Brighton & Hove  
Greenhaven  
Reading  
Southampton

**London Friends of Green Spaces Network**

Brent (N)	Bromley
Camden	Croydon
Enfield	Greenwich
Hackney	<u>Haringey</u>
Harrow	Hounslow
Islington	<u>Lambeth</u>
<u>Lewisham</u>	Merton
<u>Redbridge</u>	<u>Southwark</u>
South-West London	
Tower Hamlets	
Waltham Forest	





# LFGN

London Friends of Green Spaces Network

- WHAT WE SAY
- WHAT TO VIEW
- SAVING GREENSPACES
- LEGAL CASES
- MANAGING GREEN SPACES
- FRIENDS GROUPS
- CONTACT US

DIARY FOR 2018



## CPRE London E-Bulletin

📅 14th November 2018 🧑 committee

Latest Planning & Environment news from around the London boroughs CPRE London's latest Green London E-Bulletin is out now. It's packed with vital environmental and planning news including: • major developments, [...]



📁 Uncategorized



## Old Tidemill Garden

📅 2nd November 2018 🧑 committee

Police and protesters clash in south east London as community fight to save green space Evening Standard, 30.10.2018 The clash has been the latest hurdle campaigners have faced in their [...]



📁 Borough, Updates News from Member Groups

## Offer of a video of your park

📅 14th November 2018 🧑 committee

We are making short films about friends groups around London: would you like one? • It will be yours, so you can use it to promote your group • It will be shown [...]



📁 Uncategorized



## Park and 81 mature trees still doomed, despite builder pulling out

📅 7th November 2018 🧑 committee

A third of a town centre park, including 81 mature lime trees, are still condemned by development scheme, despite the council's development partner pulling out of the "transformational project". This [...]



📁 campaigning, Saving Greenspaces

## JOIN OUR MAILING LIST.....

Add your email here

JOIN NOW

## Next Meeting

NEXT MEETING FOR ALL LONDON'S FRIENDS' GROUPS:

Monday 3rd December 2018

6pm – 8pm @ City Hall (Committee Room, downstairs by the cafe). 110 The Queens Walk, London, SE1 2AA(10mins walk from London Bridge tube station).

Topic – London Green Spaces Management Plans

MAP

## GET INVOLVED!

Already part of your local park friends group?

– Join our newsletter email list and be inspired!

– Come along to an open morning / afternoon hosted by Park Friends Groups around London

– Is your group linked up to other such groups in your borough? If not we can help you set up a Friends of Parks Forum there



**NATIONAL  
LOTTERY FUNDED**



# Building and Sustaining a Network



- Need to keep in touch
- Maintain a database
- Provide regular activity and support
- Issues
  - geography
  - communication
  - capacity & governance
  - resources
  - voluntary



# Continuing development

## Provisional dates

Merseyside

Liverpool: 16 Feb. '19

NWPFF Conference

Wirral: 13 April '19

Cheshire (Crewe)

Cumbria (Carlisle)

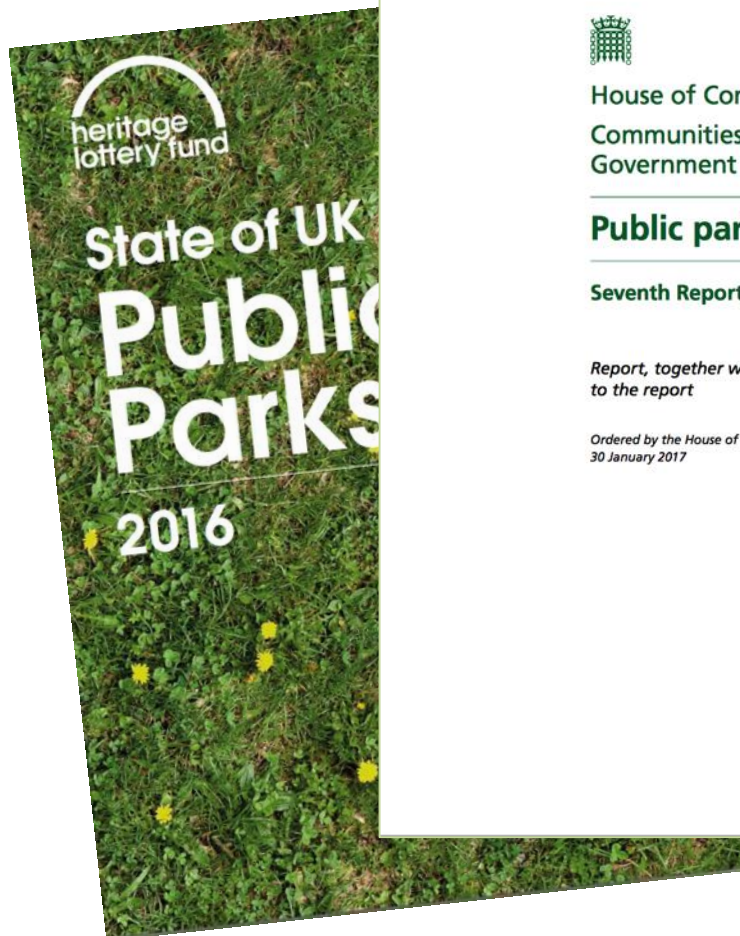
tbc



**a national network**



# Facing The Challenge



# Parks Action Group (PAG)



National  
Trust





# Progress and future impact



- Awareness and advocacy
- MoU and joint working
- Lobby for resources and recognition
- Statutory status
- Retaining grass roots
- Regional reps
- Staff support

# Info., support + please keep in touch!



[www.facebook.com/NWPFF](https://www.facebook.com/NWPFF)



[www.natfedparks.org.uk](http://www.natfedparks.org.uk)

@nwparksforum



@NatFedParks

[nwparksforum@gmail.com](mailto:nwparksforum@gmail.com)



[secretary@natfedparks.org.uk](mailto:secretary@natfedparks.org.uk)