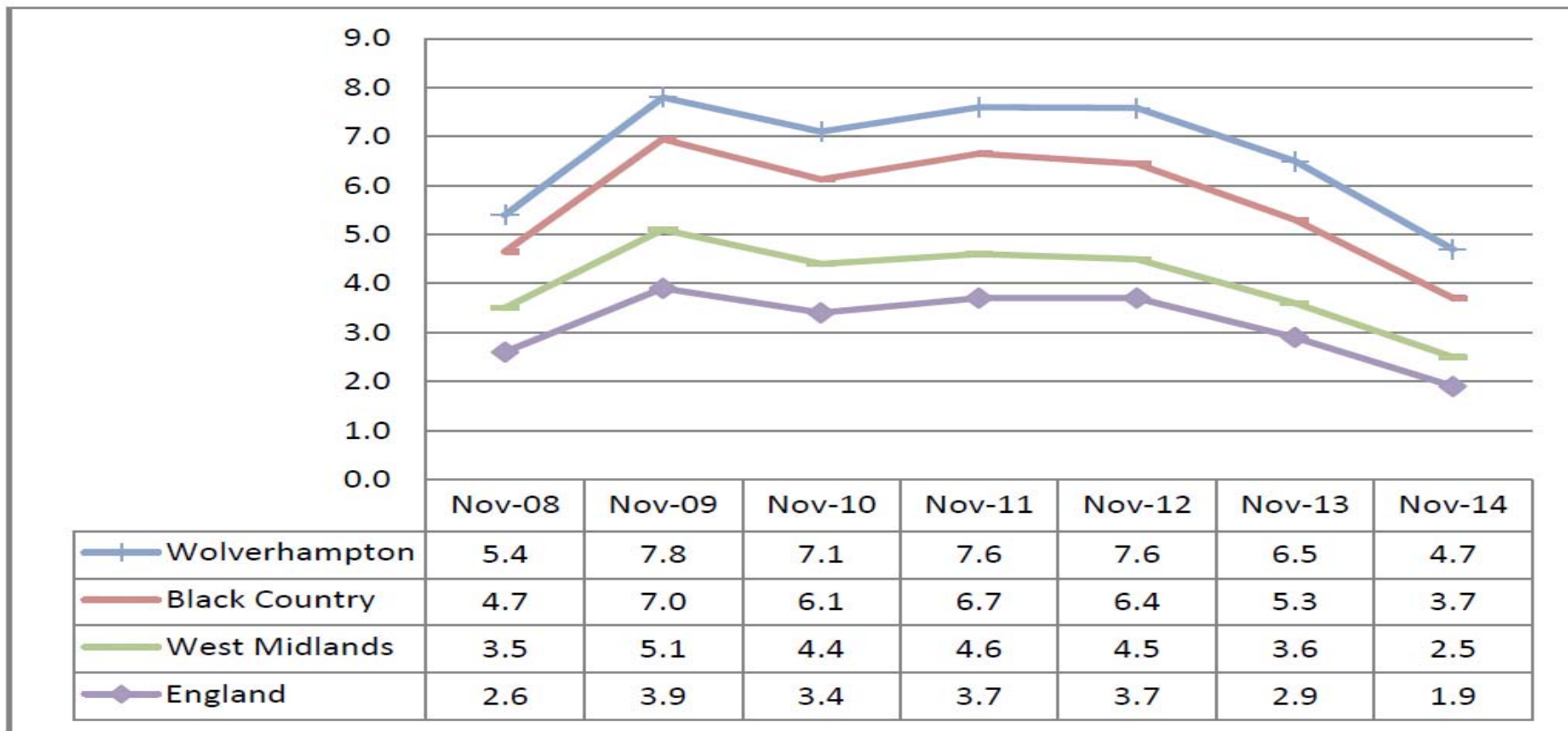


# Employment Support Throughout a Tenancy

Oliver Herrmann  
Employability Co-ordinator  
Wolverhampton Homes

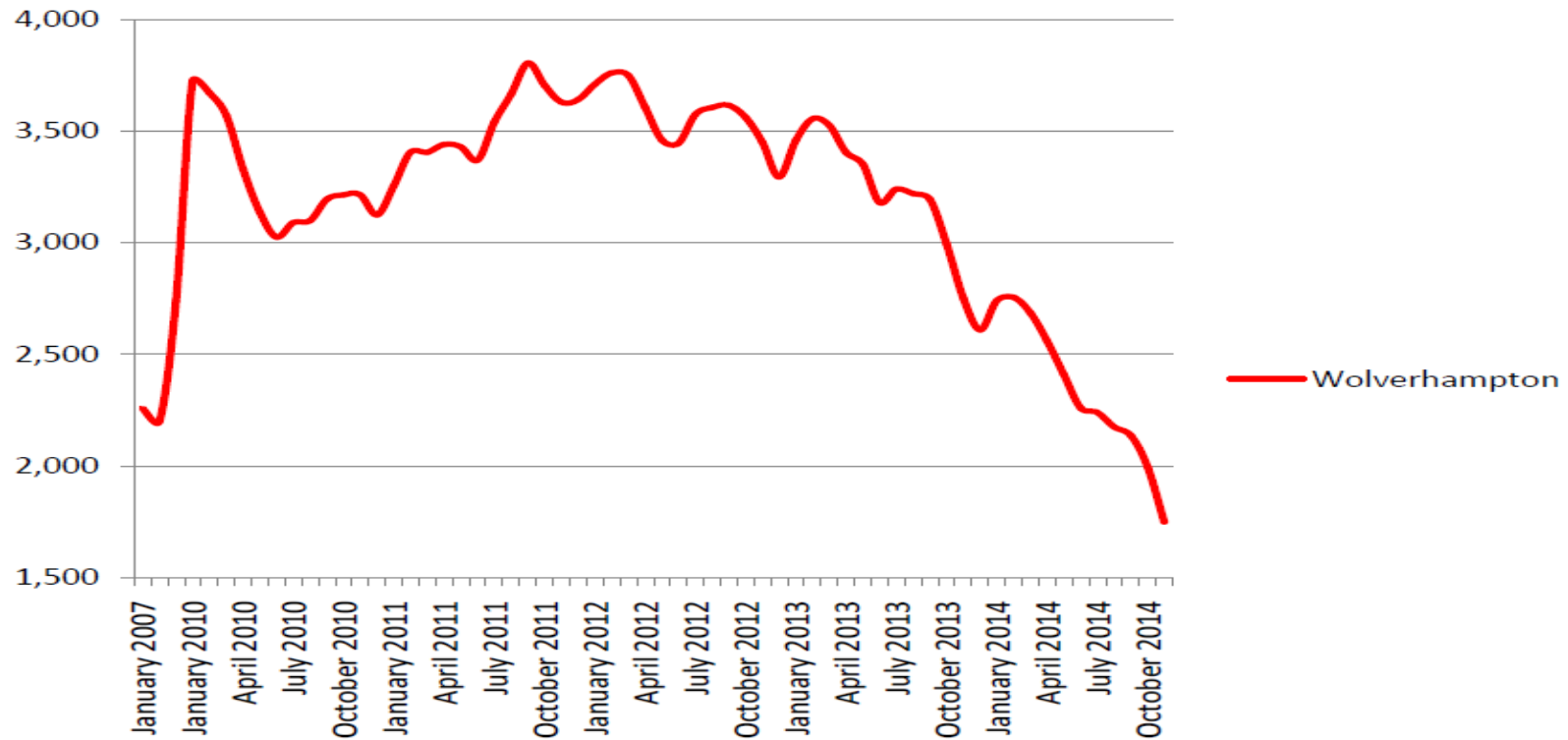


# The Situation in Wolverhampton



# The Situation in Wolverhampton

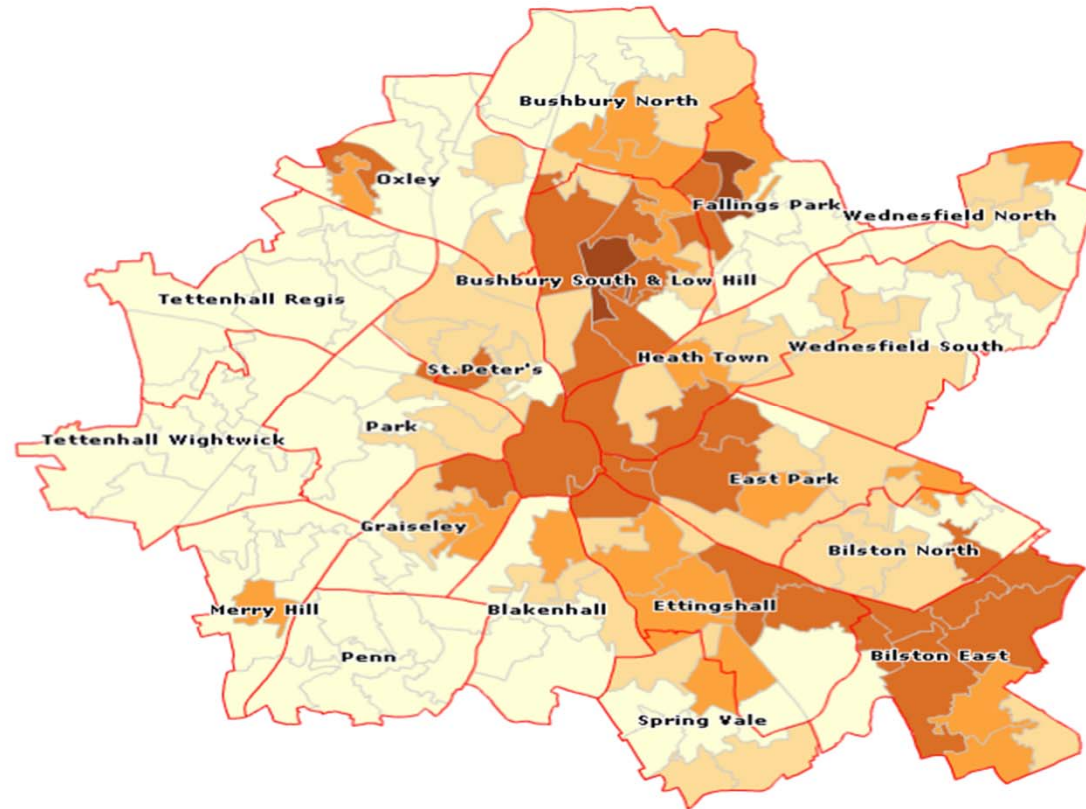
Youth Unemployment (JSA) - (aged 18 -24)



# The Situation in Wolverhampton

## Deprivation

- Top 1%
- Top 5%
- Top 10%
- Top 20%
- Outside Top 20%



# The Growth Pledge



# Employment Support Throughout a Tenancy

Emergence of Wolverhampton Homes' LEAP







Designed by tenants

Never say no

Recruitment & Selection

Working with Partners

Apprentice Charter







# How does LEAP work?



- Referral Methods
- Taster Sessions
- One to One Meetings



# Pre-Employment Programme



# Timken Training Centre





# Gaining Vital Work Experience



# Access to Apprenticeships and Job Opportunities





# What our apprentices say...



  
**INMOTION2013**  
Project of the Year  
**WINNER**

  
The 2013 **Winner**  
**PEER AWARDS**  
For Excellence

  
**24 housing awards 2014**  
**FINALIST**  
Best Apprenticeship Scheme



The Overall Winner of the  
2013 Peer Award



The logo for Wolverhampton Homes, featuring a stylized sun or fan shape in blue and yellow above the text "Wolverhampton Homes".

Winner of the  
**Business Awareness  
for the Community**  
Category



The logo for Wolverhampton Homes, featuring a stylized sun or fan shape in blue and yellow above the text "Wolverhampton Homes".



[www.wolverhamptonhomes.org.uk](http://www.wolverhamptonhomes.org.uk)

  
Wolverhampton Homes

# The Growth of LEAP



- Over 500 tenants have undertaken Pre-employment Training
- 120 tenants have completed an 8 Week Work Experience Placement
- Over 70 apprentices and trainees appointed
- Over 50 Permanent Jobs with WH and Contractors



# Tackling Youth Unemployment



## Talent Match

BLACK COUNTRY

**Young People** | Experts through Experience



[www.wolverhamptonhomes.org.uk](http://www.wolverhamptonhomes.org.uk)



Wolverhampton Homes

# Launch of Wolverhampton Works



[www.wolverhamptonhomes.org.uk](http://www.wolverhamptonhomes.org.uk)



Wolverhampton Homes



# Regional Apprentice of the Year 2013



# Michelle's Story



# Keys to Success



# For Further Information



Oliver Herrmann BSc Hons, CIPD, MA  
Employability Co-ordinator

Tarmac Road,  
Off Millfields Road, Bilston,  
Wolverhampton WV4 6JW  
01902 550144

[Oliver.herrmann@wolverhamptonhomes.org.uk](mailto:Oliver.herrmann@wolverhamptonhomes.org.uk)

[www.wolverhamptonhomes.org.uk](http://www.wolverhamptonhomes.org.uk)



[www.wolverhamptonhomes.org.uk](http://www.wolverhamptonhomes.org.uk)



Wolverhampton Homes