



**Pictorial
Meadows**



**the
green
estate**

**COMMUNITY
INTEREST
COMPANY**



Owen Hayman, Landscape Manager

Pictorial Meadows

Green Estate CIC and Pictorial Meadows

Our products and services

- PM Annual seeds
- PM Perennial seeds
- PM Perennial Meadow Turf
- PM meadow management
- Consultation and collaboration
 - Case study: Glasgow MegaFlora

Why choose Pictorial Meadows?

Manor Estate, Sheffield

“The worst estate in Britain”

Roy Hattersley, M.P. 1995



1998 Start of a Heritage and Environment Project
Partnership between local Development Trust and The Wildlife Trust



Manor Fields Park

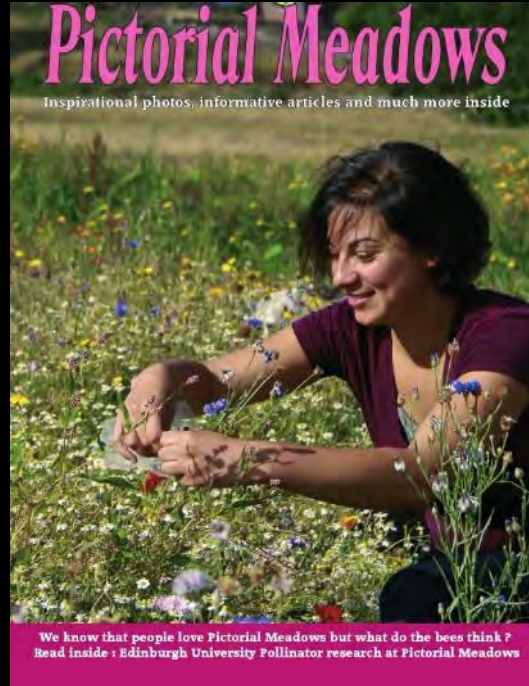


Manor Fields Park



Manor Fields Park





Beauty on a Budget

**New Approaches
to Successful
Urban Meadows**

**Mike Evans &
Christos Papachristou
Green Estate/Pictorial Meadows**



The
University
Of
Sheffield.



2003 Green Estate buy majority share of Pictorial Meadows from Professor Nigel Dunnett



200 hectares 'cleared sites' contract





2010 London Olympics



Professor James Hitchmough



Pictorial Perennials Research and development



**The University
Of Sheffield.**



The Green Estate CIC today, 25+ years later

Current Position

£2.9m turnover

65-70 staff

40+ volunteers

42 hectares

20 on-site community enterprises

40,000+ site visits including 5k GCSE students,

Customers - UK and 3 EU countries

Kings Award for Enterprise in Sustainable
Development

10 years Green Flag Award

11 products and services



The Green Estate CIC today, 25+ years later

Current Position

£2.9m turnover

65-70 staff

40+ volunteers

42 hectares

20 on-site community enterprises

40,000+ site visits including 5k GCSE students,

Customers - UK and 3 EU countries

Kings Award for Enterprise in Sustainable
Development

10 years Green Flag Award

11 products and services



The Green Estate CIC today, 25+ years later

Current Position

£2.9m turnover

65-70 staff

40+ volunteers

42 hectares

20 on-site community enterprises

40,000+ site visits including 5k GCSE students,

Customers - UK and 3 EU countries

Kings Award for Enterprise in Sustainable
Development

10 years Green Flag Award

11 products and services



The Green Estate CIC today, 25+ years later

Current Position

£2.9m turnover

65-70 staff

40+ volunteers

42 hectares

20 on-site community enterprises

40,000+ site visits including 5k GCSE students,

Customers - UK and 3 EU countries

Kings Award for Enterprise in Sustainable Development

10 years Green Flag Award

11 products and services



Biomass thresholds for species dominance and diversity in sown urban meadows: Is it possible to determine what happens in the longer term through design?

M Jiang - 2020 - [etheses.whiterose.ac.uk](https://theses.whiterose.ac.uk)

... experiment at the **Green Estate** Ltd, Manor Top, **Sheffield**, UK ... my supervisor Professor James **Hitchmough** for his invaluable ... Special thanks to everyone I met at the **Green Estate** Ltd ...

☆ Save 📄 Cite Related articles All 2 versions 🔗

Enhancing Ruderal Perennials in Manor Fields Park, **Sheffield**: A New Park on the 'Bandit Lands' of Urban Green Space Dereliction

M Tylecote, N Dunnett - Urban wildscapes, 2012 - api.taylorfrancis.com

... located in the Manor and Castle district of **Sheffield**, UK, the aesthetic and experiential quality of the vision of a social enterprise company, **Green Estate** Ltd. At Manor Fields, we challenge ...

☆ Save 📄 Cite Cited by 5 Related articles All 2 versions 🔗

Investigating the planting potential for urban rain gardens: plant selection, establishment and performance

J Yuan - 2016 - etheses.whiterose.ac.uk

... at University of **Sheffield**. I remember so vividly the inspirations and passion with which I learned in Landscape department and created in the fields in **Green Estate** Ltd., **Sheffield**. The ...

☆ Save 📄 Cite Cited by 6 Related articles All 4 versions 🔗

Understanding Stakeholders' Perceptions of Current and Future Park Management Practices

J Nam - 2018 - etheses.whiterose.ac.uk

... on six urban parks in the city of **Sheffield** to explore their acceptability. This research ... for better park management in the city of **Sheffield** and the study sites. This research contributes ...

☆ Save 📄 Cite Cited by 1 Related articles All 2 versions 🔗

Place-keeping

N Dempsey, H Smith, M Burton - Open Space Management in ..., 2014 - api.taylorfrancis.com

... Park, **Sheffield**, (England), it may exacerbate a sense of distrust ... public open spaces, such as this park in **Sheffield**, England ... of academics and practitioners auditing in **Sheffield**, England ...

☆ Save 📄 Cite Cited by 2 Related articles 🔗

Connecting making and keeping: Design and management in place-keeping

M Burton, N Dempsey, A Mathers - Place-Keeping, 2014 - taylorfrancis.com

... The success of **Green Estate** in **Sheffield** lies in the dedication of its long-serving staff and ongoing training that ensures a flexibility of approach in that they are able to respond to ...

☆ Save 📄 Cite Cited by 14 Related articles All 2 versions 🔗

Improving urban grassland for people and wildlife Access to nature is beneficial to human health.

TLWEC Partnershipbrings - ukri.org

Prioritise public satisfaction and aesthetic delight as well—as supporting wildlife objectives, including making visible wildlife and pollinators a priority. Often involve establishing new ...

☆ Save 📄 Cite Related articles All 7 versions 🔗



The Green Estate CIC today, 25+ years later

Current Position

£2.9m turnover

65-70 staff

40+ volunteers

42 hectares

20 on-site community enterprises

40,000+ site visits including 5k GCSE students,

Customers - UK and 3 EU countries

Kings Award for Enterprise in Sustainable Development

10 years Green Flag Award

11 products and services



The Green Estate CIC today, 25+ years later

Current Position

£2.9m turnover

65-70 staff

40+ volunteers

42 hectares

20 on-site community enterprises

40,000+ site visits including 5k GCSE students,

Customers - UK and 3 EU countries

Kings Award for Enterprise in Sustainable
Development

10 years Green Flag Award

11 products and services



The Green Estate CIC today, 25+ years later

Current Position

£2.9m turnover

65-70 staff

40+ volunteers

42 hectares

20 on-site community enterprises

40,000+ site visits including 5k GCSE students,

Customers - UK and 3 EU countries

Kings Award for Enterprise in Sustainable
Development

10 years Green Flag Award

11 products and services

Products and Services

- Pictorial Meadows Seeds
- Pictorial Meadows Turf
- Green Recycling
- Specialist Soils
- Meadows and Resilience Landscaping
- Parks Plus
- Heritage and Nature Visitor Experience and Education
- Weddings, Events and Venue Hire
- Growing Communities
- Community Enterprise Ecosystem
- Consultancy



The Green Estate CIC today, 25+ years later



Our mission is to grow green and resilient urban places where people and nature can thrive

Pictorial Meadows

High-impact designed mixes, inspired by nature

Sustainable meadow communities for a range of conditions

Native and non-native, for people and pollinators

Engaging, adaptive and resilient

Aimed at garden and urban settings



Pictorial Meadows



Pictorial Meadows

Our 'Designed Ecology' approach

- Ever-changing seasonal colour combinations
- Sequential flowering, from early to late season
- Sequential heights from low to tall through the season
- Visually stunning displays
- A range of distinct mixes
- Robust, tried and tested

MEADOW MIX	Seeds per g (Nr)	Typical field establishment (%)	Desired plants/m2 (Nr)	g/seed/m2 to achieve this (Full rate)
Species 1	6000	30	22	0.012222222
Species 2	800	5	4	0.1
Species 3	400	15	4	0.06666667
Species 4	150	10	3	0.2
Species 5	1000	15	15	0.1
Species 6	10000	10	5	0.005
Species 7	2100	20	22	0.05238095
Species 8	110	10	1	0.09090909
Species 9	450	10	5	0.11111111
Species 10	500	20	5	0.05
Species 11	300	10	3	0.1
Species 12	2000	30	5	0.008333333
Species 13	1400	30	10	0.02380952
Species 14	6000	15	5	0.005555556
Species 15	7000	20	4	0.00285714
Species 16	450	20	2	0.022222222
Species 17	1000	20	4	0.02
Species 18	1200	20	3	0.0125
Species 19	380	15	3	0.05263158
Species 20	280	20	5	0.08928571
Species 21	700	15	5	0.04761905
Species 22	1100	10	6	0.05454545
Species 23	420	5	1	0.04761905
Species 24	1400	20	5	0.01785714
Species 25	1400	15	5	0.02380952
Total			152	1.31693533



Pictorial Meadows Seed

The 'Vibrant' Annuals and 'Biodiversity Rich' Perennials seed mix ranges, providing high visual, ecological, and resilient planting.



www.pictorialmeadows.co.uk



Vibrant Annuals



Pictorial Meadows Seed

The 'Vibrant' Annuals and 'Biodiversity Rich' Perennials seed mix ranges, providing high visual, ecological, and resilient planting.



www.pictorialmeadows.co.uk

Vibrant Annuals

- 06 PA01 Classic Ever changing long flowering impact
- 07 PA02 Pixie Long flowering but shorter varieties
- 08 PA03 Sundance Hot oranges yellows and reds
- 09 PA04 Aqua Cool blues, purples and whites
- 10 PA05 Pastel Long season pinks, reds and whites
- 11 PA06 Patriotic Strong red, white and blues
- 12 PA07 Candy Long season with mixed colours
- 13 PA09 Dragonfly Dramatic, darker colours, red and deep purple
- 14 PA10 Kingfisher Contrasting blue, orange and white
- 15 PA11 Cornfield Best British Native only seed mix

PM Pastel Annuals at Strathclyde Country Park



PM Classic Annuals at Trentham Gardens







Pictorial Meadows Seed

The 'Vibrant' Annuals and 'Biodiversity Rich' Perennials seed mix ranges, providing high visual, ecological, and resilient planting.



www.pictorialmeadows.co.uk

Vibrant Annuals

- One year display
- Rapid growth, flowers within 6 weeks
- Cheap, easy, reliable
- A useful introduction to meadow style planting
- Great for winning 'hearts and minds'
- Lots of community engagement and positive feedback
- Temporary, 'meanwhile landscapes'
- Around 200 plants per m2
- 100% flowers
- Perform on most soil types
- Long flowering
- Easy to cut down in autumn or winter
- Repeat annually, 3 years on the same site

Vibrant Annuals



Clear the ground
of weeds and
grass



Cultivate to a
fine tilth



Seed is sown in
spring



Seed is rolled
into the ground



Enjoy your
seasons
display



End of season
cut and fly



Pictorial Meadows Seed

The 'Vibrant' Annuals and
'Biodiversity Rich' Perennials
seed mix ranges, providing
high visual, ecological, and
resilient planting.



www.pictorialmeadows.co.uk





Biodiversity Rich Perennials

Pictorial Meadows Seed

The 'Vibrant' Annuals and 'Biodiversity Rich' Perennials seed mix ranges, providing high visual, ecological, and resilient planting.



www.pictorialmeadows.co.uk



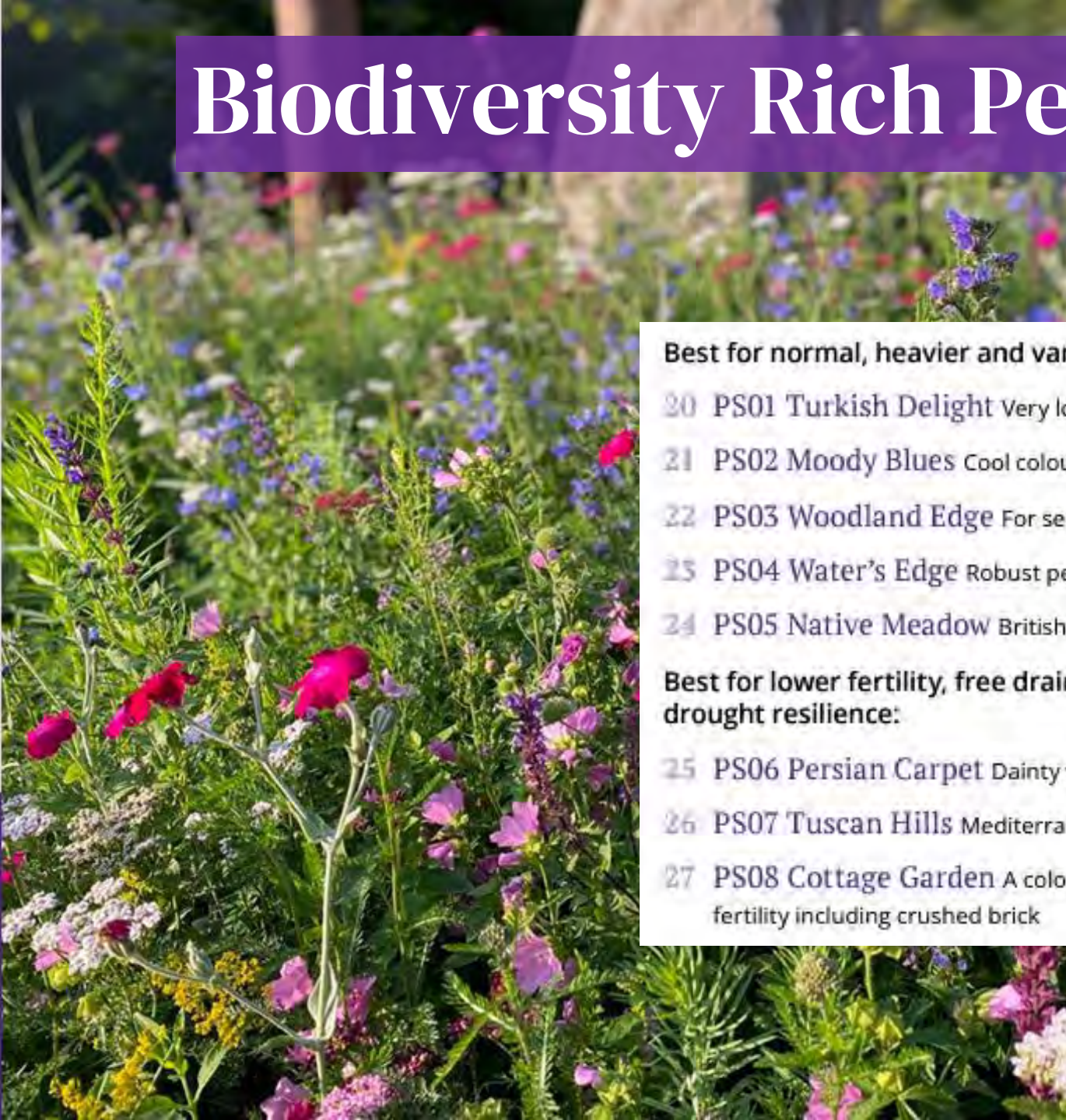
Biodiversity Rich Perennials

Pictorial Meadows Seed

The 'Vibrant' Annuals and 'Biodiversity Rich' Perennials seed mix ranges, providing high visual, ecological, and resilient planting.



www.pictorialmeadows.co.uk



Best for normal, heavier and variable fertility soils:

- 20 PS01 Turkish Delight Very long season flowering
- 21 PS02 Moody Blues Cool colour themed display
- 22 PS03 Woodland Edge For semi shade and early flowering impact
- 23 PS04 Water's Edge Robust periodic wetland and damp clay soils
- 24 PS05 Native Meadow British Native species only

Best for lower fertility, free draining soils, offering more drought resilience:

- 25 PS06 Persian Carpet Dainty with very long season flowering
- 26 PS07 Tuscan Hills Mediterranean style flowers
- 27 PS08 Cottage Garden A colourful, reliable mix for very low fertility including crushed brick



Pictorial Meadows Seed

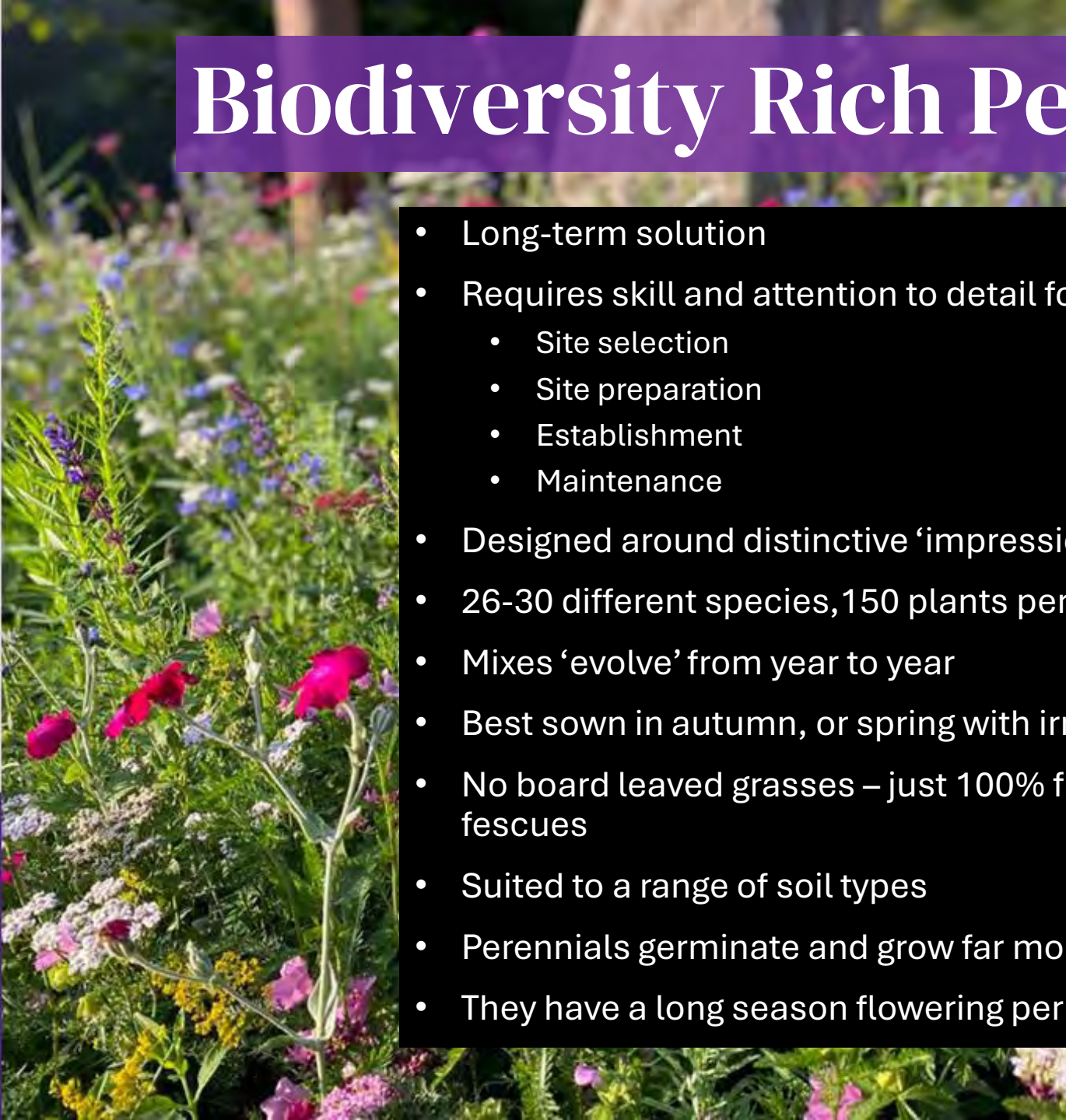
The 'Vibrant' Annuals and 'Biodiversity Rich' Perennials seed mix ranges, providing high visual, ecological, and resilient planting.



www.pictorialmeadows.co.uk

Biodiversity Rich Perennials

- Long-term solution
- Requires skill and attention to detail for
 - Site selection
 - Site preparation
 - Establishment
 - Maintenance
- Designed around distinctive 'impressionistic' colours
- 26-30 different species, 150 plants per m²
- Mixes 'evolve' from year to year
- Best sown in autumn, or spring with irrigation
- No board leaved grasses – just 100% flowers, or a few fine fescues
- Suited to a range of soil types
- Perennials germinate and grow far more slowly than annuals
- They have a long season flowering period



Pictorial Meadows Perennial Seeds on recycled aggregates and brownfield sites



Cottage Garden PM Perennial Seed

Pictorial Meadows Perennial Seeds on recycled aggregates and brownfield sites

Hilldrop, Essex

John Little Grass Roof Company



Pictorial Meadows Perennial Seeds on recycled aggregates and brownfield sites



Cottage Garden PM Perennial Seed

Pictorial Meadows Perennial Seeds on recycled aggregates and brownfield sites



Cottage Garden PM Perennial Seed

- Weed-free surface mulch
- Slower to establish = more diverse in long-run
- Low fertility = high diversity, less weedy, long-term solution
- Shorter, finer, less green waste, lower maintenance
- ‘Design’ with substrates, overseed, let the plants find their niche
- Use local aggregates and subsoils
- Avoid importing fertile topsoil that creates low diversity grassland

Pictorial Meadows Perennial Seeds on recycled aggregates and brownfield sites



Cottage Garden PM Perennial Seed

Pictorial Meadows Perennial Seeds on recycled aggregates and brownfield sites



Cottage Garden PM Perennial Seed

Pictorial Meadows Perennial Seeds on recycled aggregates and brownfield sites



Cottage Garden PM Perennial Seed

Pictorial Meadows Perennial Seeds on recycled aggregates and brownfield sites



Cottage Garden PM Perennial Seed

Pictorial Meadows on recycled aggregates

Technique

- Lay out aggregates
- Grade site or create landforms
- Incorporate bulbs
- Sow seed in autumn



Pictorial Meadows on recycled aggregates

Technique

- Lay out aggregates
- Grade site or create landforms
- Incorporate bulbs
- Sow seed in autumn



Pictorial Meadows on recycled aggregates: Superbloom at the Tower of London



Presenting Vibrant Verge

A designed perennial meadow with an extra long flowering period, by **JUB Holland** and **Pictorial Meadows**.



**Pictorial
Meadows**



Presenting Vibrant Verge

A designed perennial meadow with an extra long flowering period, by **JUB Holland** and **Pictorial Meadows**.



**Pictorial
Meadows**



Presenting Vibrant Verge

A designed perennial meadow with an extra long flowering period, by **JUB Holland** and **Pictorial Meadows**.



**Pictorial
Meadows**



VV01
**Sunny
Vibrant Verge**



VV02
**Shady
Vibrant Verge**



Core species, colours and key flowering period

	F	M	A	M	J	J	A	S
Achillea millefolium								
Anthemis tinctoria								
Allium Purple Rain								
Allium sphaerocephalon								
Bellis perennis Monstrosa Red								
Camassia leichtlinii caerulea								
Centaurea cyanus Standard Mix								
Coreopsis tinctoria								
Coreopsis lanceolata								
Crocus large flowered mix								
Daucus carota								
Dianthus carthusianorum								
Echium vulgare								
Eschscholtzia californica								
Gypsophila elegans								
Gaillardia aristata								
Hesperis matronalis								
Linaria maroccana								
Leucanthemum vulgare								
Linaria vulgaris								
Malva moschata								
Malva sylvestris zebrina								
Lavatera trimestris								
Linum perenne								
Lunaria annua								
Lychnis coronaria								
Myosotis sylvatica								
Muscari latifolium								
Narcissus Botanical Mix								
Narcissus poeticus Recurvus								
Oenothera biennis								
Origanum vulgare								
Silene armeria Electra								
Tulipa sylvestris								
Tulipa turkistanica								
Tulips clusiana Mix								
Verbascum nigrum								
Veronica spicata								

All colours are an indicative guide only.

Look out for these distinctive species:



A: Camassia leichtlinii caerulea, B: Malva sylvestris zebrina, C: Linum perenne, D: Tulipa turkistanica, E: Veronica spicata

Core species, colours and key flowering period

	F	M	A	M	J	J	A	S
Achillea millefolium								
Achillea millefolium Cerise Queen								
Aquilegia vulgaris								
Bellis perennis								
Bellis perennis Pomponette Rose								
Cordayis Beth Evans								
Crocus Ruby Giant								
Chionodoxa luciae								
Centaurea cyanus alba								
Digitalis purpurea Apricot								
Digitalis purpurea Alba								
Eranthis cilicica								
Fritillaria meleagris mix								
Galium verum								
Geum Mrs Bradshaw								
Geranium pratense								
Hesperis matronalis Mixed								
Hypericum perforatum								
Knautia arvensis								
Leucanthemum vulgare								
Linum rubrum								
Lunaria biennis								
Myosotis sylvatica								
Narcissus Topolino								
Ornithogalum nutans								
Papaver Shirley Hybrids								
Polemonium caeruleum								
Scilla siberica								
Silene dioica								
Salvia nemorosa								
Valeriana officinalis								

All colours are an indicative guide only.

Look out for these distinctive species:



A: Fritillaria meleagris Mix, B: Digitalis purpurea Alba, C: Lunaria biennis, D: Polemonium caeruleum, E: Ornithogalum nutans

Get in touch with our UK sales representatives:

Job van Eeden
E: job@jubholland.nl
M: +31 6 43 97 83 19

Jos Smit
E: jos.smit@jubholland.nl
M: +31 6 51 61 83 26

www.thevibrantverge.co.uk



Pictorial Meadows Turf

The Adaptive and Resilient Range
providing high visual, ecological
and robust planting



www.pictorialmeadows.co.uk





Pictorial Meadows Turf

The Adaptive and Resilient Range providing high visual, ecological and robust planting



www.pictorialmeadows.co.uk



Best for normal, heavier and variable fertility soils.

04 PT01 Treasure Chest
A very long season, drought resistant, flower-filled meadow.

05 PT02 Purple Haze
A beautiful long season, cool colour themed meadow.

06 PT03 Woodland Fringe
Best for semi-shade to full sun, heavier, moister soils and for a strong spring impact.

07 PT04 Pollinator Verge
Our lowest growing mix with some salt tolerance and for dry, free draining bioswales.

08 PT05 Rain Garden
An ornamental meadow for rain gardens, pond edges, periodic wet and damp clay soils **GROW TO ORDER ONLY**

Best for lower fertility, free draining soils, offering more drought resilience.

09 PT06 Patchwork Quilt
A dainty, very long season, flower-filled meadow, predominantly European and UK species.

10 PT07 Indian Summer
A Prairie style meadow with some great late season impact.

11 PT08 Super Pollinator
A Steppe style meadow with bolder form and foliage and some super charged pollinators.

12 PT09 Botanical Skyline
Perfect for green roofs, gravel edges and very dry, shallow light soils.

HOW TO ORDER: By phone **0114 267 7635** or enquire through the website **www.pictorialmeadows.co.uk**



Pictorial Meadows Turf

The Adaptive and Resilient Range
providing high visual, ecological
and robust planting



www.pictorialmeadows.co.uk

- Long-term, pre-grown
- Rapid and reliable perennial meadow
- Easy to specify and cost
- Quick and easy to deliver and install
- Higher weed resistance
- Lay anytime, autumn-winter is ideal
- Establishes very quickly, may flower within weeks
- Very long season flowering
- Proven successful now for over 15 years
- Cheaper than pot planted schemes
- Plant densities of around 150 plants per m²
- Great on challenging sites - slopes, banks



Meadow turf production, supply and installation



PT01

Treasure Chest

NORMAL & VARIABLE FERTILITY SOILS

Multicolour perennial meadow

A robust and reliable designer meadow with an exceptionally long flowering period, ideal for most landscape and garden situations. 29 different flowering perennial species carefully formulated to create densities of over 150 plants per metre.

Preferred moisture range — Tolerance for drought stress and moderate seasonal waterlogging.

Shade tolerance — Best in full sun with some light shade tolerance.

Colour theme — Varied colours with ever-changing seasonal interest.

Height details — Generally considered medium height with taller emergence.



Core species, colours and flowering period

	M	A	M	J	J	A	S
<i>Achillea filipendulina</i> Cloth of Gold					■	■	■
<i>Achillea millefolium</i>				■	■		
<i>Achillea millefolium</i> Cerise Queen						■	■
<i>Achillea ptarmica</i> Noblessa					■	■	
<i>Betonica officinalis</i>						■	■
<i>Bupthalmum salicifolium</i>			■	■	■		
<i>Campanula persicifolia</i>				■	■		
<i>Centaurea montana</i>			■	■	■		
<i>Centaurea scabiosa</i>				■	■	■	
<i>Galium verum</i>				■	■	■	
<i>Geranium pratense</i>				■	■		
<i>Geum chiloense</i> Mrs Bradshaw			■	■			
<i>Knautia arvensis</i>						■	■
<i>Leucanthemum vulgare</i>			■	■			
<i>Linaria vulgaris</i>					■	■	■
<i>Lychnis chalcedonica</i>				■	■	■	
<i>Malva alcea fastigiata</i>				■	■	■	
<i>Malva moschata</i>				■	■	■	
<i>Oenothera tetragona</i>				■	■		
<i>Origanum vulgare</i>					■	■	
<i>Primula acaulis</i>	■	■					
<i>Primula veris</i>		■	■				
<i>Papaver orientale</i> Brilliant				■	■		
<i>Ranunculus acris</i>				■	■		
<i>Sanguisorba officinalis</i>						■	■
<i>Scabiosa columbaria</i>					■	■	
<i>Stachys lanata</i>					■	■	
<i>Succisa pratensis</i>							■
<i>Valeriana officinalis</i>			■				

All colours are an indicative guide only.

Look out for these distinctive species:



A: *Papaver orientale*, B: *Lychnis chalcedonica*, C: *Galium verum*, D: *Sanguisorba officinalis*, E: *Bupthalmum salicifolium*

TO ORDER: 0114 267 7635 or www.pictorialmeadows.co.uk

PT01

Treasure Chest

NORMAL & VARIABLE FERTILITY SOILS



PT01

Treasure Chest

NORMAL & VARIABLE FERTILITY SOILS



PT02

Purple Haze

NORMAL FERTILITY SOILS

Cool colour perennial meadow

A robust and reliable colour themed designer meadow ideal for most landscape and garden situations. 31 different flowering perennial species carefully formulated to create densities of over 150 plants per metre.

Preferred moisture range — Tolerance for drought stress and moderate seasonal waterlogging.

Shade tolerance — Best in full sun with some semi-shade tolerance.

Colour theme — A cool and subtle colour palette with whites, blues and purples.

Height details — Generally considered medium height with taller emergence.



Core species, colours and flowering period

	M	A	M	J	J	A	S
<i>Alcea malviflora nigra</i>						Dark Blue	
<i>Achillea millefolium</i>						Light Blue	
<i>Achillea millefolium Summer Pastels</i>						Orange	
<i>Aquilegia vulgaris</i>			Blue				
<i>Aster amellus</i>							Dark Purple
<i>Betonica officinalis</i>							Dark Purple
<i>Campanula persicifolia</i>				Blue			
<i>Centaurea nigra</i>						Dark Blue	
<i>Centaurea scabiosa</i>						Dark Blue	
<i>Daucus carota</i>						Light Blue	
<i>Delphinium grandiflorum</i>					Blue		
<i>Digitalis purpurea</i>				Purple			
<i>Echinacea purpurea</i>						Purple	
<i>Echium vulgare</i>					Blue		
<i>Eryngium planum</i>						Blue	
<i>Geranium pratense</i>					Blue		
<i>Hesperis matronalis</i>			Purple				
<i>Knautia arvensis</i>							Purple
<i>Leucanthemum vulgare</i>						Light Blue	
<i>Linum perenne</i>					Blue		
<i>Lythrum salicaria</i>						Dark Purple	
<i>Malva moschata</i>						Pink	
<i>Myosotis sylvatica</i>		Blue					
<i>Origanum vulgare</i>						Purple	
<i>Polemonium caeruleum</i>					Blue		
<i>Prunella vulgaris</i>			Dark Purple				
<i>Salvia nemorosa</i>						Dark Purple	
<i>Sanguisorba officinalis</i>						Red	
<i>Scabiosa columbaria</i>						Light Blue	
<i>Teucrium chamaedrys</i>						Blue	
<i>Veronica spicata</i>						Light Blue	

All colours are an indicative guide only.

Look out for these distinctive species:



A: *Aquilegia vulgaris*, B: *Centaurea scabiosa*, C: *Origanum vulgare*, D: *Polemonium caeruleum*, E: *Veronica spicata*

TO ORDER: 0114 267 7635 or www.pictorialmeadows.co.uk

PT02

Purple Haze

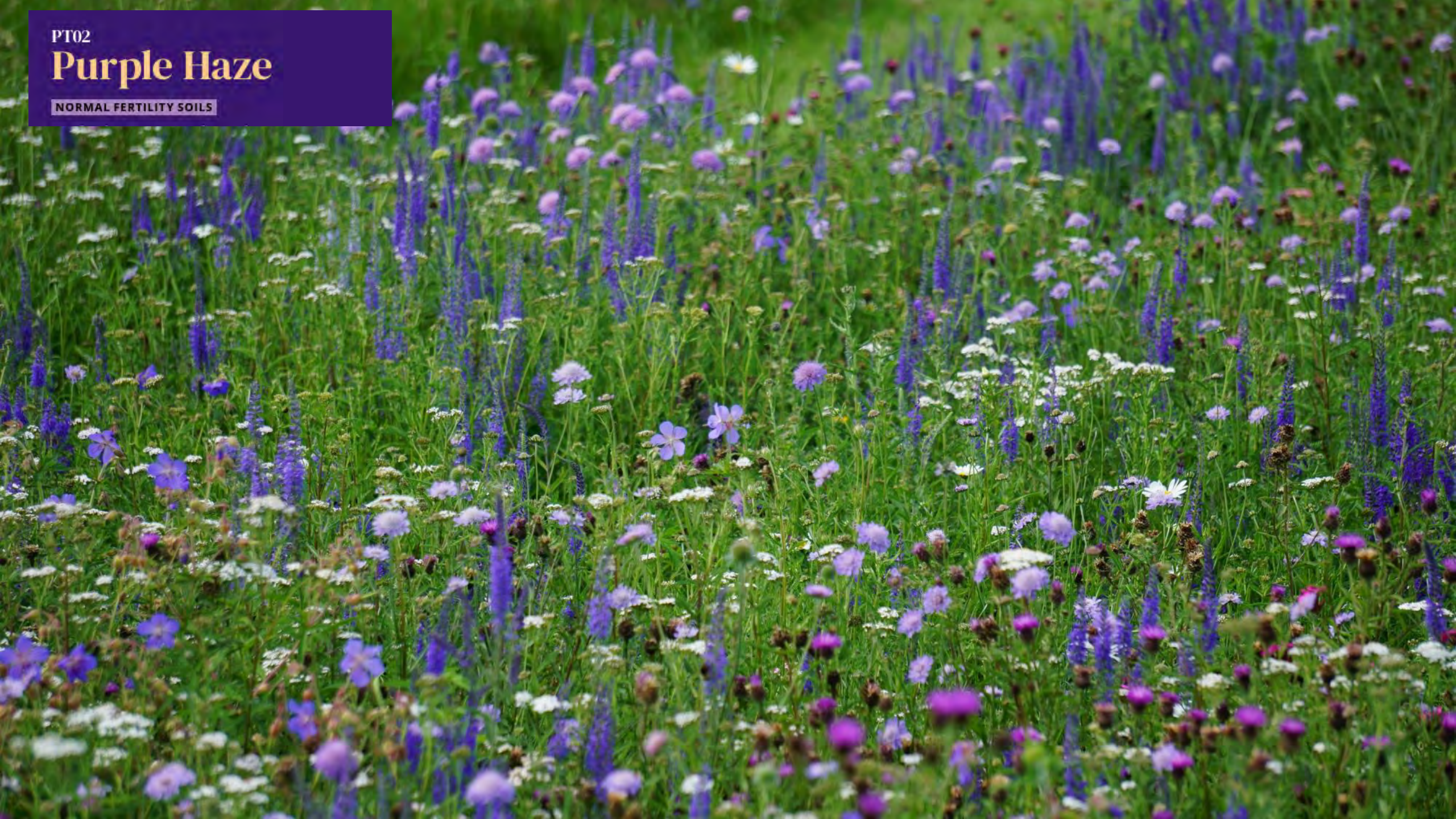
NORMAL FERTILITY SOILS



PT02

Purple Haze

NORMAL FERTILITY SOILS



Meadow maintenance

Weeding

1. Winter-spring, as growth starts
2. During summer, catch before seeding
3. Autumn-winter, after cut-back



Cut and collect

- At least once a year, usually autumn or winter
- Cut higher, minimise disturbance
- Mid-season cut if flopped, or to encourage later re-flowering





**Very weedy site?
Try the “Annuals and Review” approach**

Step 1: Annuals for 3 years – thoroughly controls perennial weeds, but accumulates annual weeds

Step 2: Then sow the perennials, regular establishment cuts through the first year control any annual weeds

Result: Sown perennial meadow with minimal weed issues

Pictorial Meadows Consultation and Bespoke Mixes

Tap into our team of...

- Landscape Architects
- Landscape Managers
- Horticulturists
- Machinery Experts
- Greenspace Managers
- **Consultation**
 - Site visit with client
 - Full written report
 - Site analysis, vegetation survey and soil analysis
 - Recommendations and proposals, including prices
 - Detailed advice for site preparation, establishment and maintenance
- **Collaborative meadow design**
- **Bespoke mixes** *e.g* colour themes, special events
- **Ongoing support and monitoring**
- **Training**, at your site or ours

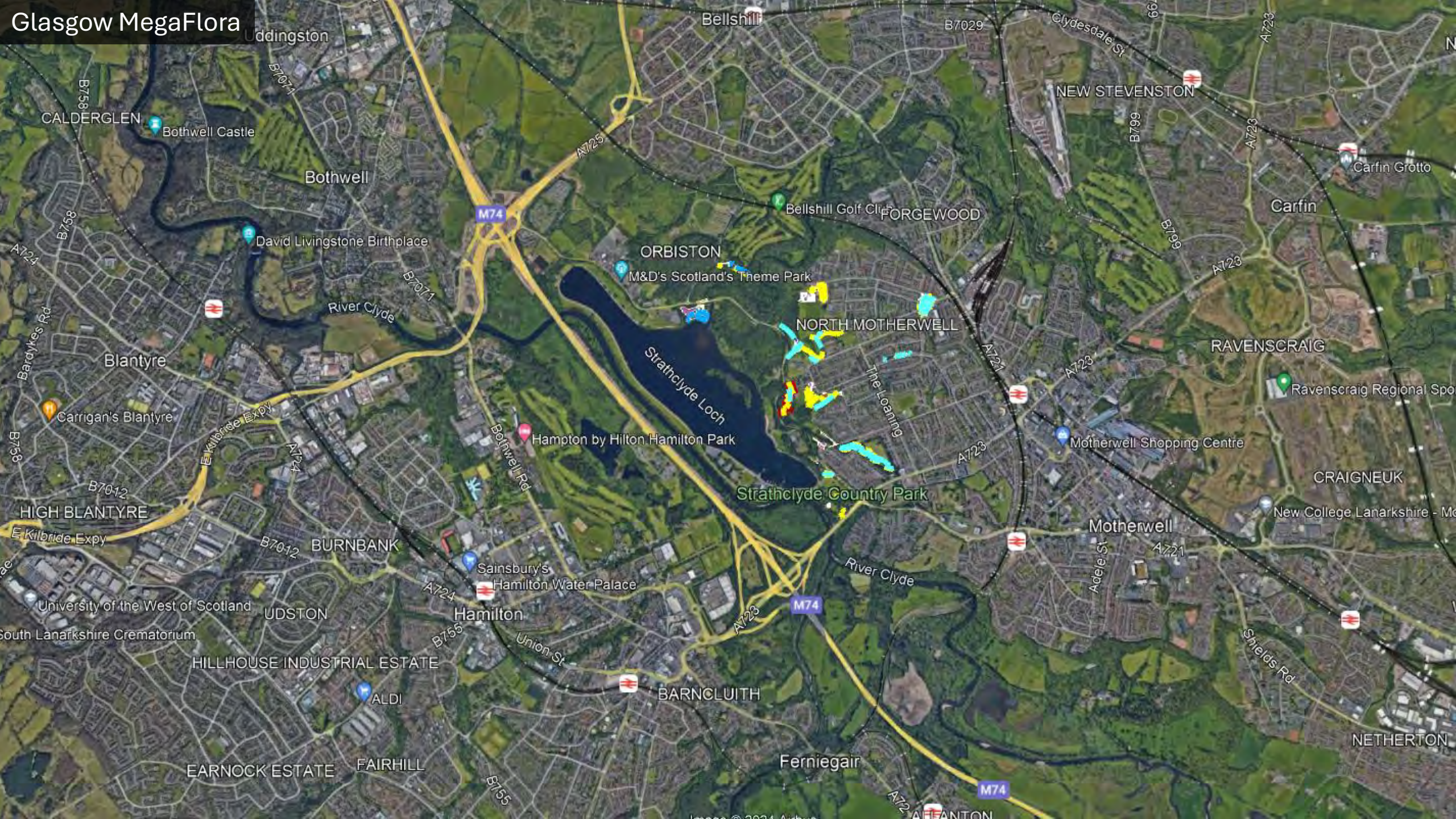


Pictorial Meadows Consultation and Bespoke Mixes

Glasgow MegaFlora

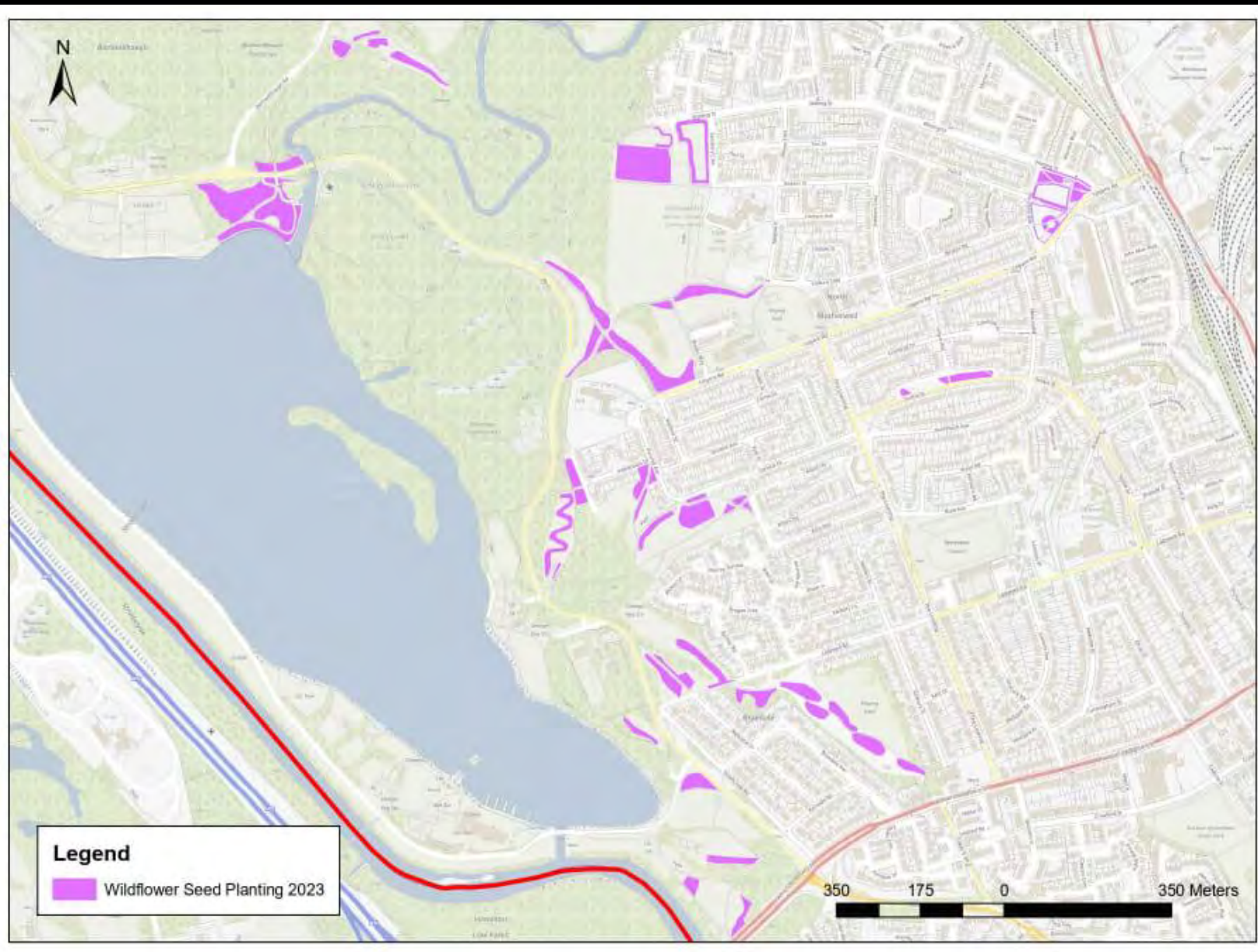


Glasgow MegaFlora









21 hectares trial area

Aims

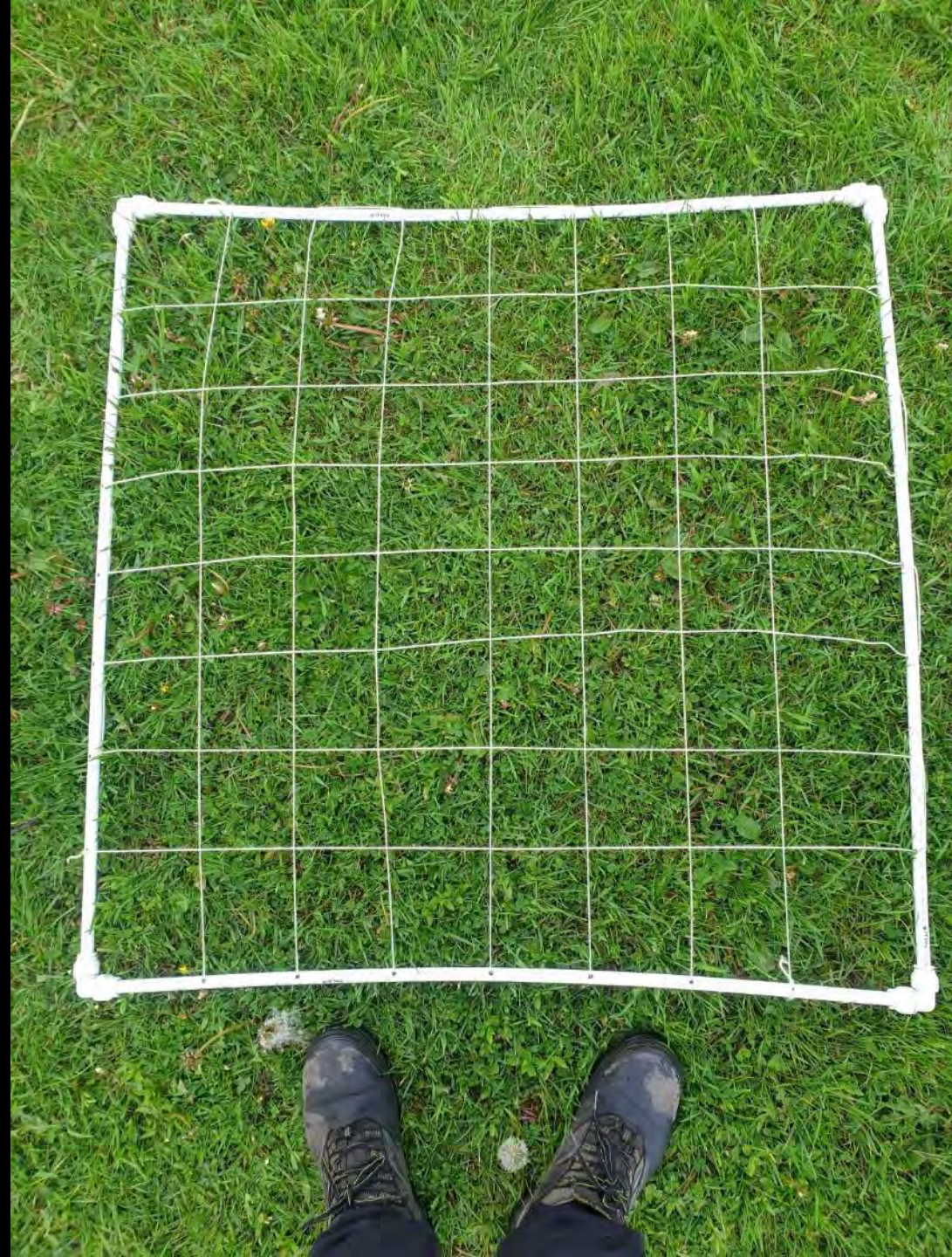
- Biodiversity
- Reduce carbon emissions
- More attractive environment
- Reduce grassland management costs

Green Estate CIC contracted for

- Full site investigation
- Vegetation and soil survey
- Trial and demonstrate a range of meadow styles and approaches
- Ground preparation, seeding, planting, bulbs, establishment
- Work with green space managers for long-term management
- Project monitoring
- Estimate carbon and financial costs and savings

Glasgow MegaFlora: Site investigation

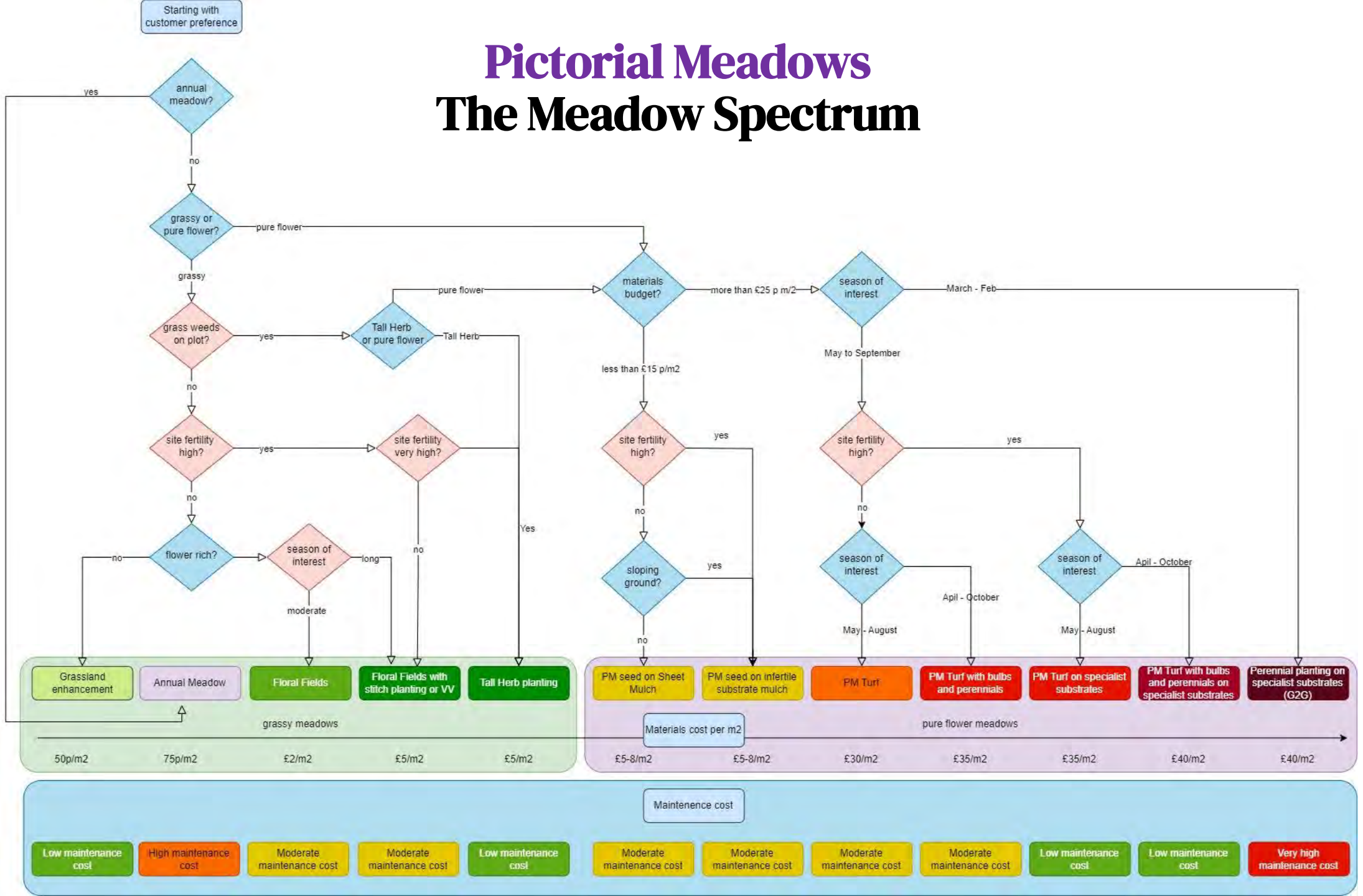






Pictorial Meadows

The Meadow Spectrum



Glasgow MegaFlora: Seed mixing and site preparation



Glasgow MegaFlora: Ground preparation

- Scarify only
- Spray only
- Spray and scarify
- Cultivate only (8-12cm depth)
- Spray and cultivate?



Glasgow MegaFlora: Seed sowing

15 bespoke seed mixes

- Native only
- Native + cornfield annuals
- Native + Pictorial Annuals
- Native + Pictorial Annuals + Pictorial Perennials
- 153 million seeds, over 7 hectares
- 100+ plant species
- 11,000 bulbs



Glasgow MegaFlora: Project monitoring



Glasgow MegaFlora: Project monitoring



Glasgow MegaFlora: Spring



Glasgow MegaFlora: June



Glasgow MegaFlora: June





Glasgow MegaFlora: June



Glasgow MegaFlora: June



Glasgow MegaFlora: **Single species blocks**

With and without yellow rattle



Glasgow MegaFlora: Single species blocks



Geranium pratense



Succisa pratensis

Glasgow MegaFlora: Clonal Tall Herb planting

Palacerigg Country Park

- Extremely fertile soil
- Former animal enclosure



Glasgow MegaFlora: Clonal Tall Herb planting



Glasgow MegaFlora: Clonal Tall Herb planting



Glasgow MegaFlora: Clonal Tall Herb planting







Glasgow MegaFlora: August





Glasgow MegaFlora: August

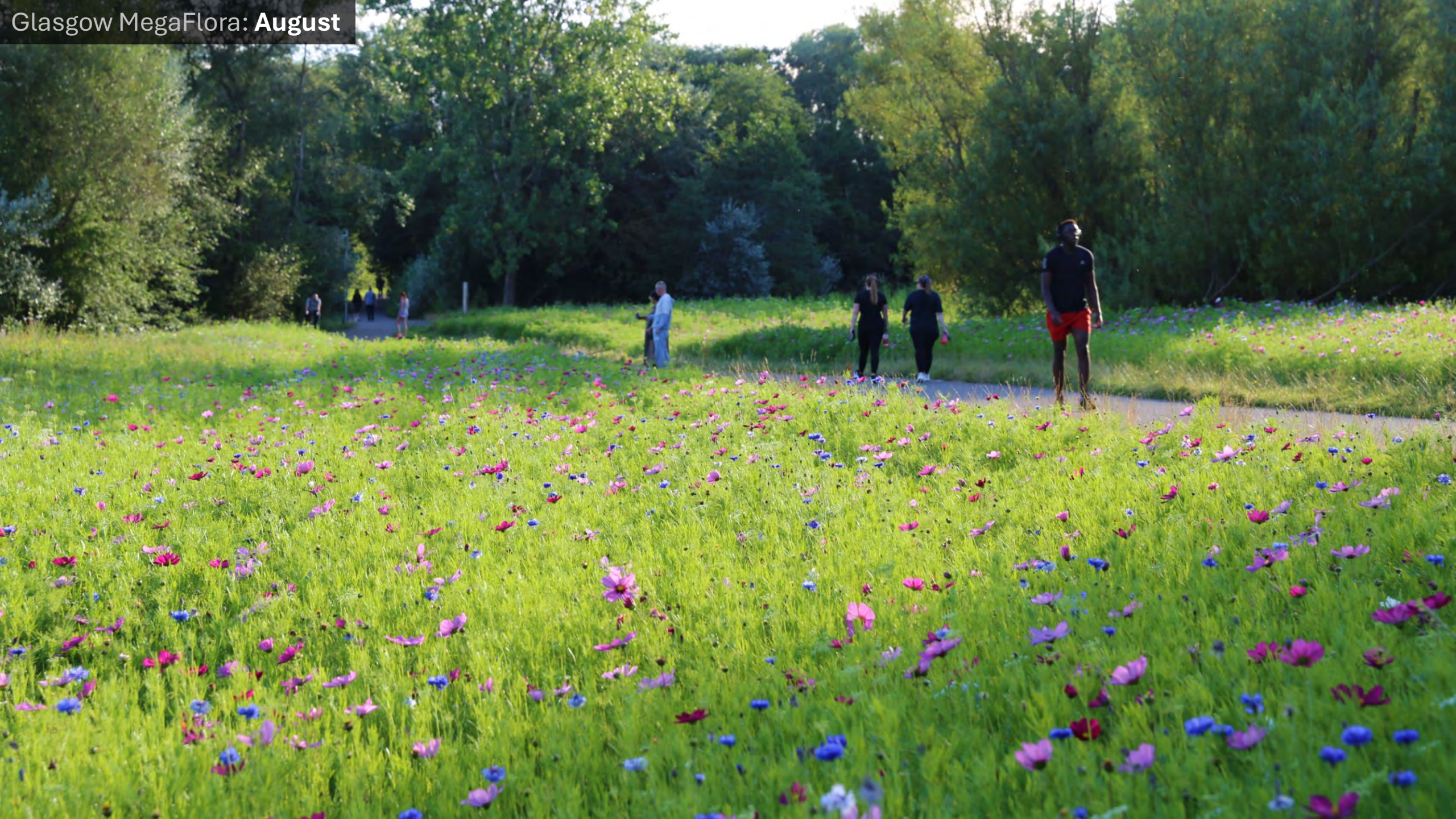


Glasgow MegaFlora: August



Glasgow MegaFlora: August





Glasgow MegaFlora: August



Glasgow MegaFlora: August



Glasgow MegaFlora: August



Glasgow MegaFlora: September















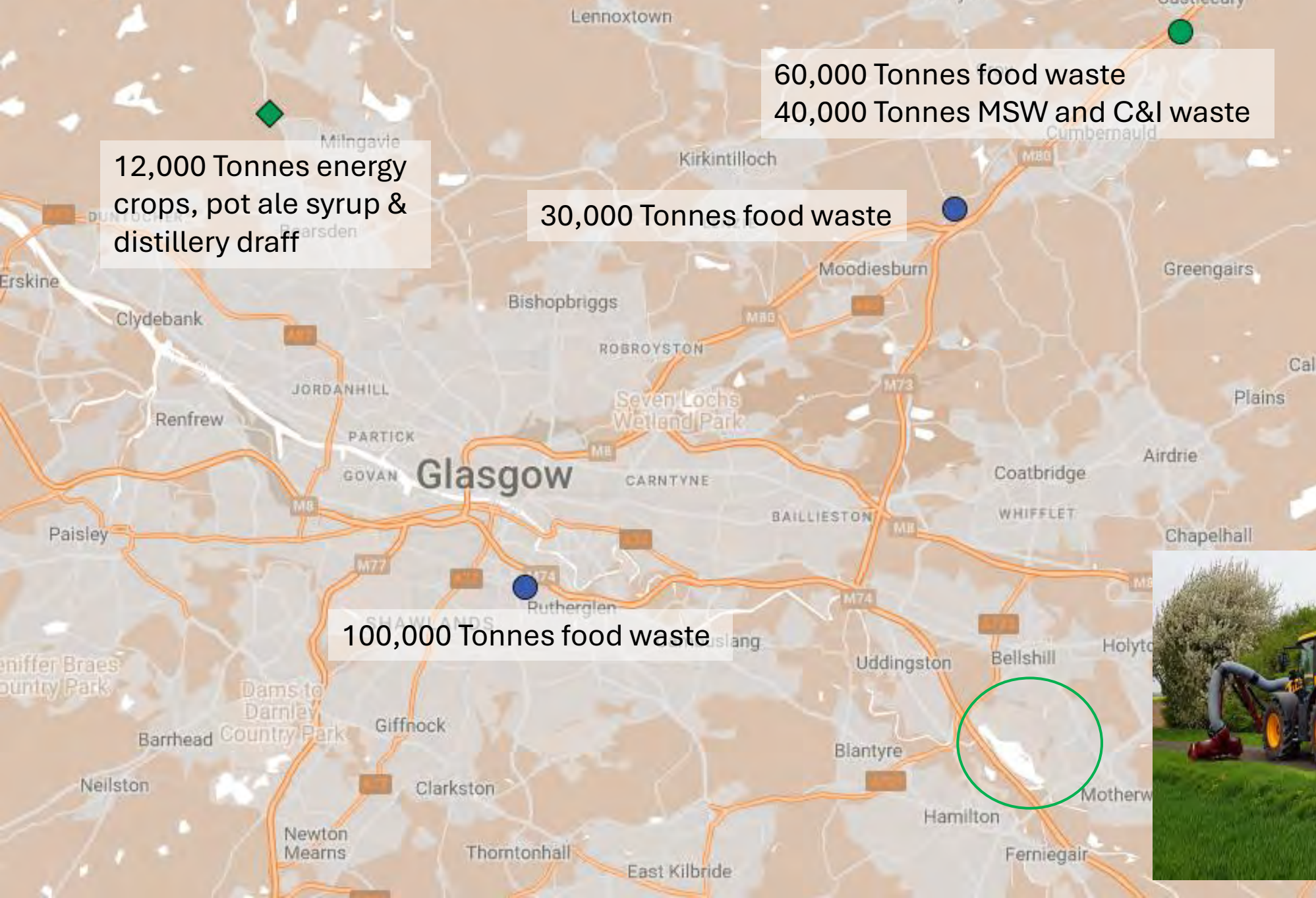
Glasgow MegaFlora: Cut and collect cost estimates

Cost						
	Slower machinery, more green waste			Faster machinery, less green waste		
Year	Tip on site	Remove	Remove & pay	Tip on site	Remove	Remove & pay
2024	£4,816	£7,188	£21,888	£3,398	£4,923	£14,373
2025	£6,421	£11,165	£40,565	£4,531	£7,581	£26,481
2026	£8,026	£17,515	£76,315	£5,664	£11,764	£49,564
2027	£7,223	£14,814	£61,854	£5,098	£9,978	£40,218
2028	£6,421	£13,063	£54,223	£4,531	£8,801	£35,261
2029	£6,421	£12,588	£50,808	£4,531	£8,496	£33,066
2030	£6,421	£12,114	£47,394	£4,531	£8,191	£30,871
2031	£6,020	£11,238	£43,578	£4,248	£7,603	£28,393
2032	£6,020	£11,238	£43,578	£4,248	£7,603	£28,393
2033	£6,020	£10,764	£40,164	£4,248	£7,298	£26,198
Avg annual cost	£6,381	£12,169	£48,037	£4,503	£8,224	£31,282
Avg/1000sqm	£91	£174	£686	£64	£117	£447

For comparison, the current average cost of current grass cutting is as follows;
 14 cuts: £188/1000 sq m/year
 7 cuts: £239/1000 sq m/year



Glasgow MegaFlora: Biomass to Energy possibilities



Glasgow MegaFlora

Pictorial Meadows
www.pictorialmeadows.co.uk



Pictorial Meadows

Why choose Pictorial Meadows?

- 25 years experience
- Partnership with University of Sheffield's Landscape Department
- A 'one stop shop' for
 - Products
 - Professional meadow advice
 - Specialist meadow design
 - Meadow creation and management
- Designed for maximum flowering display
- Rigorous testing and quality control
- Most mixes are majority native, with some non-natives for
 - Longer flowering
 - Climate resilience
 - Increased biodiversity
- Widest range of meadow seed and meadow turf
- Invest in a social enterprise

Pictorial Meadows

A vibrant meadow filled with a variety of flowers. In the foreground, there are tall purple spikes, white daisies with yellow centers, and pink flowers. The background is a dense field of similar flowers, creating a colorful and textured scene.

Green Estate CIC and Pictorial Meadows

Our products and services

- PM Annual seeds
- PM Perennial seeds
- PM Perennial Meadow Turf
- PM meadow management
- Consultation and collaboration
 - Case study: Glasgow MegaFlora

Why choose Pictorial Meadows?



**Pictorial
Meadows**



**the
green
estate**

**COMMUNITY
INTEREST
COMPANY**



Owen Hayman, Landscape Manager

o.hayman@greenestate.org

Insta: [@owen_the_gardener](https://www.instagram.com/owen_the_gardener)

0114 276 2828

frontdesk@greenestate.org

info@pictorialmeadows.co.uk