



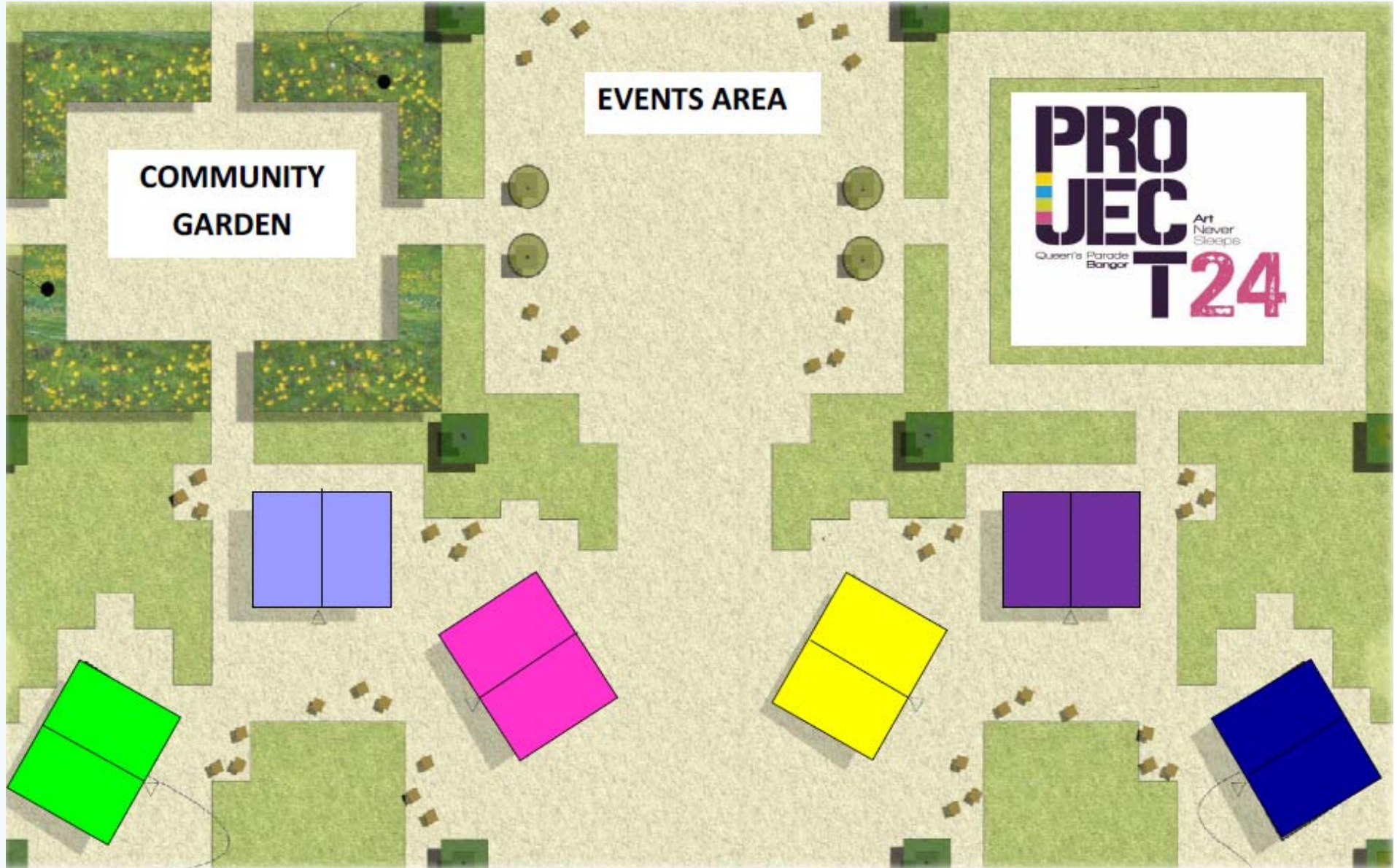
Ards and  
North Down  
Borough Council

# Sustainability, Integration & Community Planning

**13<sup>th</sup> November 2015**

**Patricia Mackey**

**Community Planning Manager**











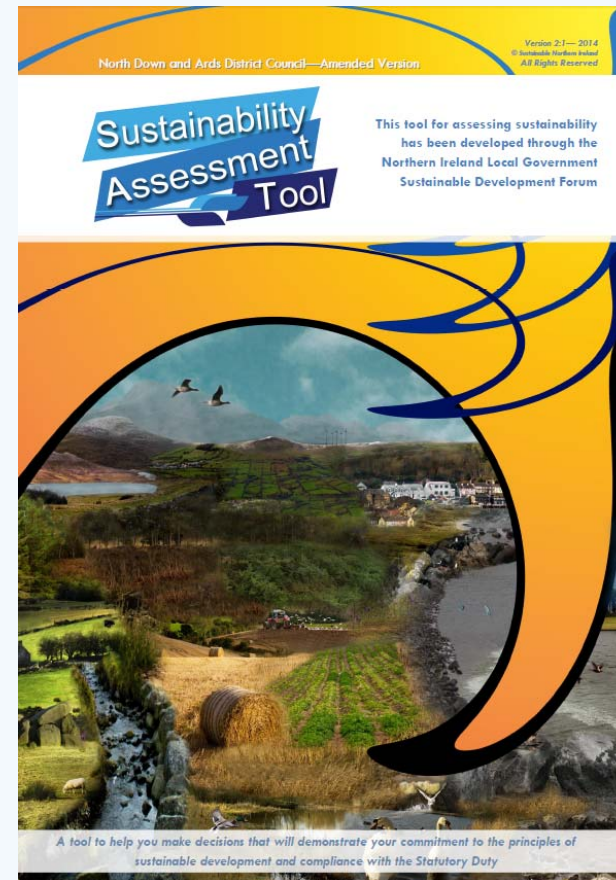
# Sustainable Development & AND

- Centralised function – sits under compliance but operates across the Council
- SD and EMS integrated as both cover whole of the organisation
- SD aligned with policy and equality to help embed it
- Integrated during the shadow year of AND



# Sustainability Assessment Tool

- Policies screened – 30 policies screened with the SAT and some mitigation measures recommended





# Community Planning and SD

- It is about holistic thinking about the needs of the Ards and North Down Borough irrespective of ‘who is responsible for what’.
- It is about making sure that organisations work together, with local people, to improve all aspects of local life.

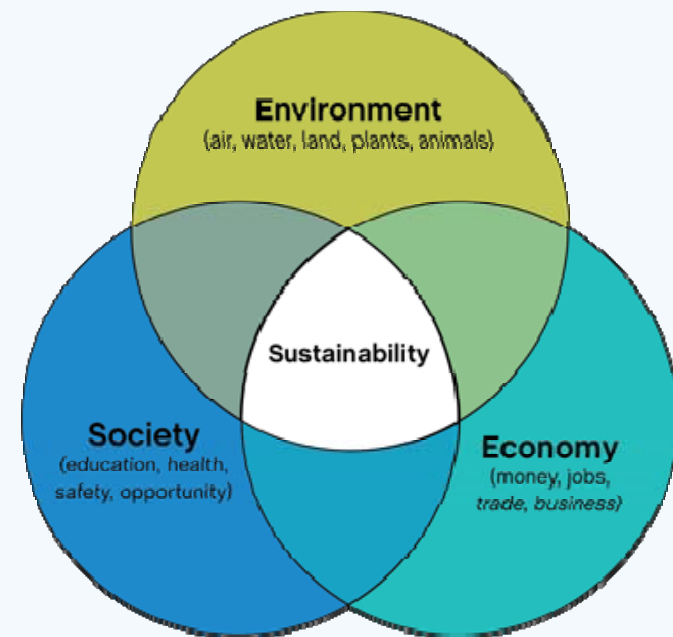




# Community Planning and SD

Community planning for a district is a process by which the Council and its Community Planning partners –

- Identify long term objectives for improving:
  - Social wellbeing of a district;
  - Economic wellbeing of a district; and
  - Environmental wellbeing of a district;
- Identify long-term objectives in relation to the district for contributing to the achievement of **sustainable development** in NI; and
- Identify actions to be performed and functions to be exercised.







# Integrating SD into Community Plan

- Sustainability appraisal incorporating Strategic Environmental Assessment – making sure something is not bad as opposed to ensuring it is good!
- Ards and North Down's Community Planning structure integrated sustainability into its third tier



# Tier 3 – Governance and Scrutiny

- Cross-cutting issues
  - Rural Proofing
  - Equality
  - Good Relations
  - Performance Management
  - **Sustainability**

Ards and North Down Borough Council  
[www.ardsandnorthdown.gov.uk](http://www.ardsandnorthdown.gov.uk)

A large graphic consisting of overlapping speech bubbles in shades of pink, purple, and teal. The text is written in a white, hand-drawn, chalk-like font.

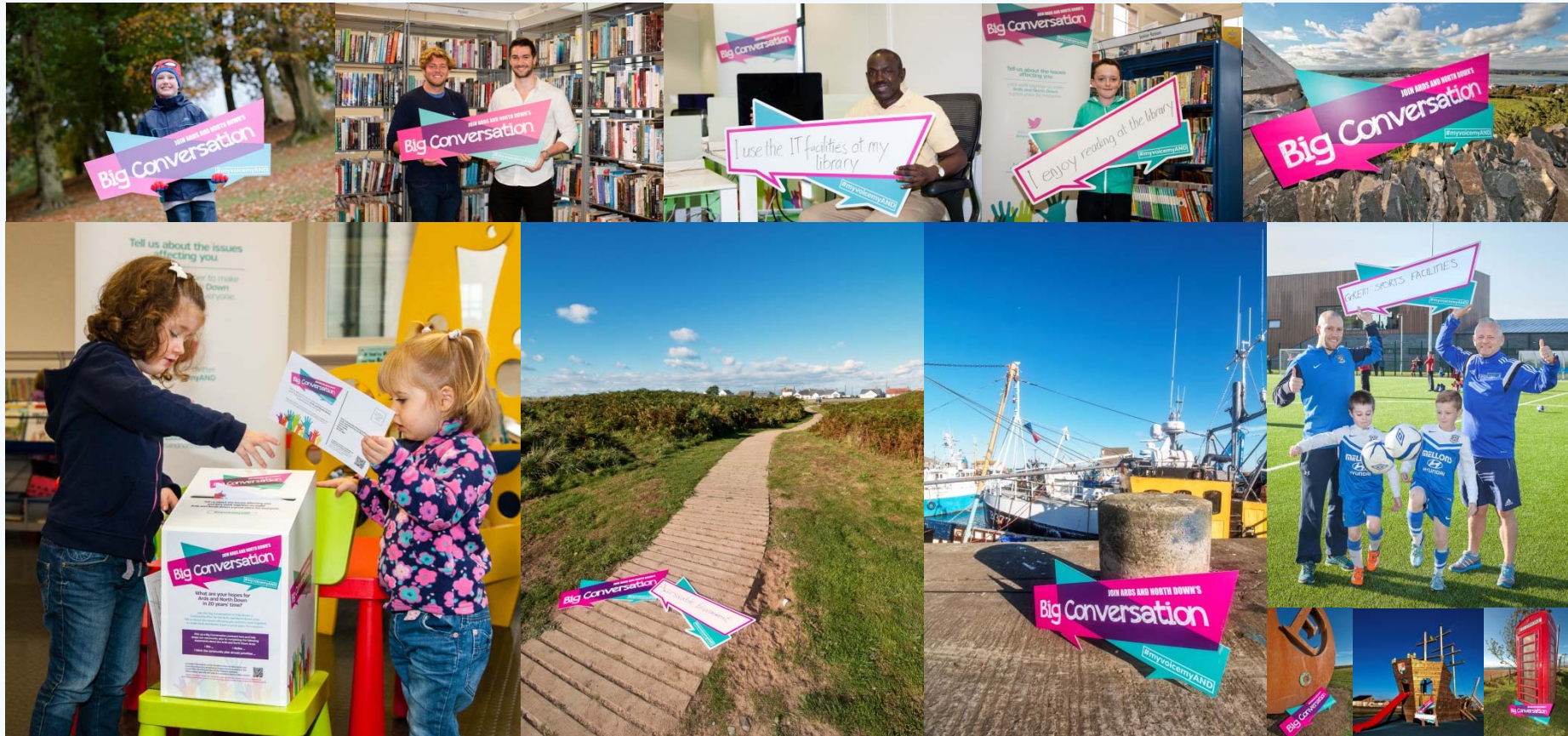
JOIN ARDS AND NORTH DOWN'S

# Big Conversation

#myvoicemyAND

Ards and North Down Borough Council  
www.ardsandnorthdown.gov.uk

# Engagement Activities





# Initial Emerging Priorities

Top 10 issues, in rank order, identified during conversations 1-3

Rank	Social	Economic	Environmental
1	Isolation – rural isolation as well as elderly isolation	Up skilling and employability and education	Protecting of natural environment and biodiversity
2	Transport links – access to communities and quality of rural transport	Tourism – utilise existing assets and benefits	Better use of green spaces and greenways, walking routes – access to the environment
3	Early interventions (health, education and crime)	Support for business start ups	Local environmental quality issues
4	Mental Health	Attracting high quality jobs and businesses	Community engagement and local projects
5	Volunteers – recruitment and support. Social Capital	Encourage entrepreneurs	Climate change
6	Employment opportunities	Digital infrastructure – IT Broadband	Civic Pride
7	Educational underachievement and increased opportunities for life-long learning	Social economy opportunities	Coastal erosion
8	Leisure and culture – used of green spaces to improve health and wellbeing	Apprenticeships and vocational training	Environmental education
9	Shared spaces and better access to services for everyone - equality	Our unique selling point – capitalise on this	Pollution – air, land and water
10	Health interventions and health inequalities	Alternative job opportunities – business landscape is changing	Planning used to protect built and natural environment