



sustainable thriving achieving

**East Dunbartonshire Council**

[www.eastdunbarton.gov.uk](http://www.eastdunbarton.gov.uk)

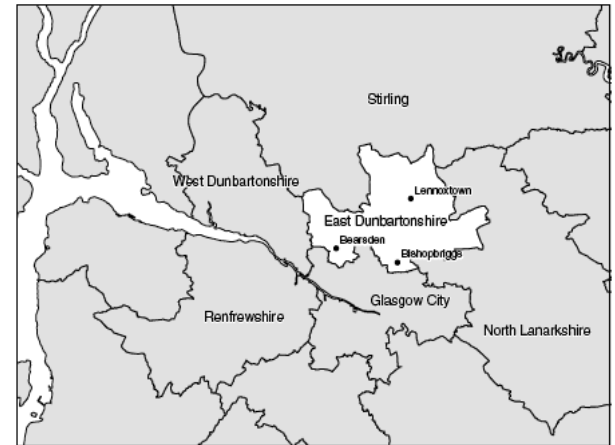
# Delivering Fleet Services

**Paul Curran – Fleet Manager - EDC**



# Introduction

- ◆ Situated to the north of Glasgow EDC also borders West Dunbartonshire, North Lanarkshire & Stirling Council
- ◆ Population of Circa 108,000 residents
- ◆ Covering an area of approximately 68 square miles
- ◆ In a 2007 survey East Dunbartonshire Council was voted the best place in Britain to raise a family, courtesy of a "Readers Digest" poll
- ◆ The Council's town of Milngavie is also the gateway to the West Highland Way




# Fleet Background


- ◆ Reorganisation in 1996
- ◆ Integration
  - Strathkelvin DC
  - Bearsden & Milngavie DC
  - Strathclyde Region fleet
- ◆ Local Authority Vehicles - most in reasonable condition
- ◆ SRC – Mainly Poor – Non runners etc
- ◆ Smaller Authority – We got the Scrap



# Main Issues (1996)

- ◆ Vehicles being scrapped due to repair costs
  - ◆ Significant Short Term hire costs
  - ◆ Varied operating arrangements
  - ◆ No clear vision or direction
  - ◆ No experience of Region Fleet Ops
- 
- A decorative graphic in the bottom right corner consisting of several overlapping, jagged shapes in various shades of teal and light blue, resembling a stylized mountain range or a modern architectural element.

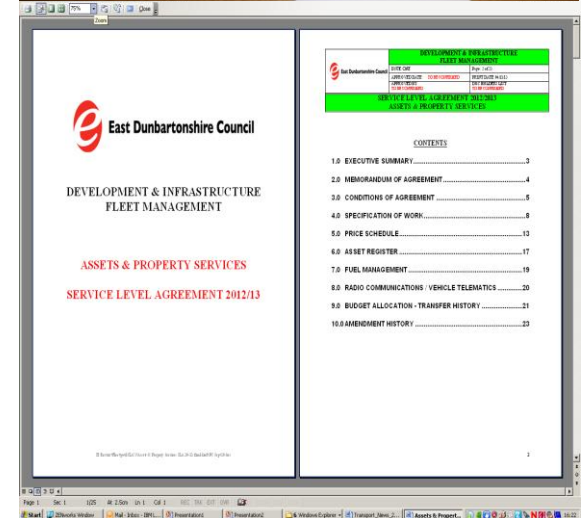
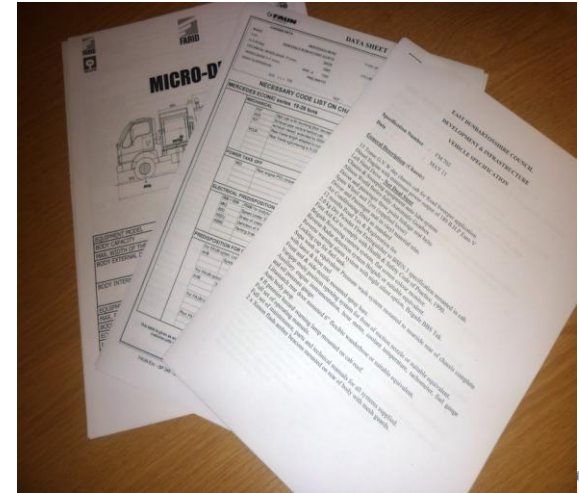
# The Solution

- ◆ Comprehensive Fleet Structure
  - ◆ Fleet Manager - Responsible for all Fleet & Plant Decisions Council Wide
  - ◆ Rationalisation of Maintenance Facilities & Working Arrangements
  - ◆ Development of a Rolling Fleet Replacement Programme (3.6m in 1997)
  - ◆ Integrated Transport Operations, Hire Desk & Fuel Management service
- 
- A decorative graphic in the bottom right corner consisting of several overlapping, jagged shapes in various shades of teal and light blue, resembling a stylized mountain range or a modern architectural element.

# Delivering for Customers

## ◆ One Stop Shop

- Fleet Provision & Procurement
- Vehicle & Plant Maintenance
- Telematics & Comms
- Short Term Hires – Council Wide
- Driver Training & Assessment
- Fuel Management
- Insurance, Licensing & O' licence
- Internal Transport & Meal Delivery service



# Continuous Development

- ◆ Introduction of Fleet Care Initiatives
  - Compliance Team introduced
  - Driver Assessment & Training
  - Statutory Operator Licence Compliance – Audits
  - Council Wide Vehicle Telematics & Reporting



# Continuous Development

- ◆ Business Case Approval for an in house Paint & Body Repair Facility
- ◆ Recruitment of a multi-skilled Painter / Panel Beater / Welder
- ◆ Authorisation to undertake In house Insurance repairs





# Continuous Development

- ◆ Procurement of Commercial Oven & Paint Mixing Room (30K)
- ◆ Management of Lease & Defleet Termination programmes
- ◆ Undertake Fabrication / Welding & Heavy Repairs to RCVs / Tippers etc




# Continuous Development

## ◆ Management of Hand Arm Vibration

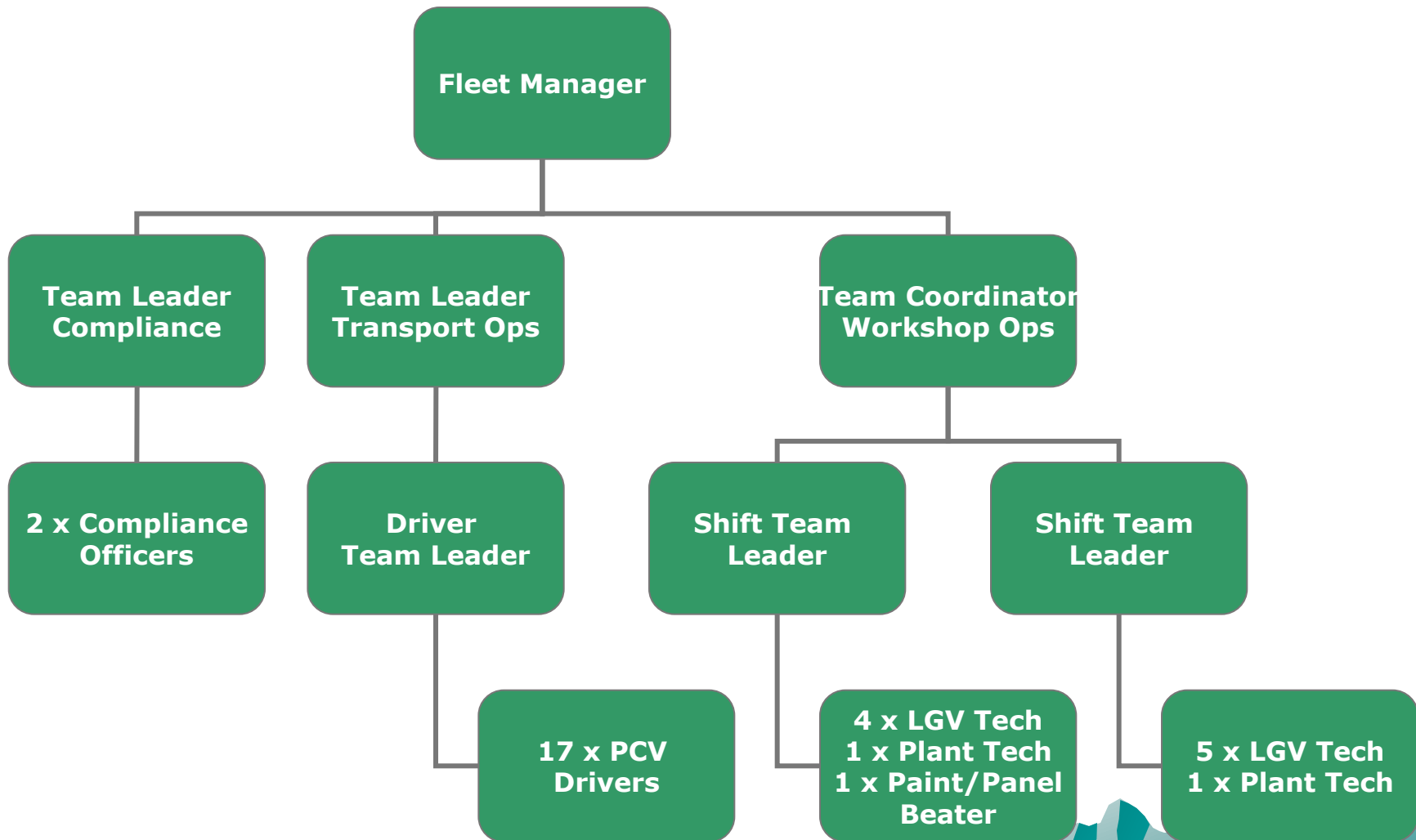
- Procurement of Measuring & Calibration Equipment (6k)
- Periodic Measurement tagging & Programming of all Roads & Neighbourhood Plant
- Daily reporting across the service for HAVs Exposure by Individual Operator
- Circa 70k spent Introducing the system - however one claim could generate 100k+ costs



# Continuous Development

- ◆ Strategic Operating Model Review 2009
  - ◆ Revised TC's – Shifts, Grades, hours & holidays, enhanced responsibilities
  - ◆ Removal of Trading accounts – no more “false profits”
  - ◆ Budget responsibility transferred to fleet
  - ◆ Fleet tasked with making major savings
- 

# Current Fleet Structure




# Current Fleet

- ◆ 85 O' licensed Vehicles
- ◆ 25 Minibuses, Buses & Coaches
- ◆ 35 Cars
- ◆ 110 Vans, Pick-ups & Tippers etc
- ◆ 140 Plant items, Tractors, Excavators, Ride on Mowers etc
- ◆ 200+ Hand held / Pedestrian machines
- ◆ 30-40 Short Term Hires as required
- ◆ Grey Fleet - Under Review



# Current Budgets

- ◆ Circa 6.2 million P.A
  - ◆ Around 2.5% of Overall Council Budget
  - ◆ Delivering across all Services
  - ◆ Indicative Fleet Value Circa 12 million
  - ◆ Budget reduced from circa 7.5 million in 2009
- 

# Kerbside Collection & Waste Review

## ◆ Background

- 9 x Weekly Refuse Collection incl Rural
  - 4 x Fortnightly Garden Waste 9 Months Per Annum
  - 13 x Weekly Kerbside Sort utilising Boxes & Kerbsiders
  - 2 x Weekly Lanes Collections
  - 6 x Weekly Trade / school Collections / Specials / Scrap
- 

# Kerbside Collection & Waste Review


## Drivers for Change

- ◆ Zero Waste Plan – Collection of Food
- ◆ Council Budget Decision CCLS in 2010
- ◆ Targets slipping – Plan needed to meet 50% Diversion by 2014





# Kerbside Collection & Waste Review

- ◆ On Hold - Zero Waste Regulations Consultation
  - ◆ ? – Commingled / Food & Green Waste
  - ◆ Needed to get clarity on what would be acceptable moving forward
  - ◆ Confirmation that certain commingled would be acceptable subject to quality of material as collected
  - ◆ In order to get funding – Food separate!
- 

# Kerbside Collection & Waste Review

- ◆ Service Review Group set up (2012)
- ◆ Engagement with Zero Waste Scotland
- ◆ ZWS - Funding for Consultant - Resource Futures Appointed
- ◆ Detailed options appraisal undertaken
- ◆ Baseline Plus 10 options considered (challenge)





# Kerbside Collection & Waste Review

- ◆ Committee Approval - October 2012
- ◆ New service to commence 6<sup>th</sup> May 2013
- ◆ Gearing up for delivering the new service begins in earnest



# Kerbside Collection & Waste Review

- ◆ Fleet Action Plan
- ◆ Agree specifications for new fleet
- ◆ Tenders / Evaluation Committee Approval
- ◆ Weekly Progress Meetings with Stakeholders
- ◆ Programme termination & disposal of outgoing fleet, owned, scheduled & early terminations
- ◆ Successful bid through ZWS for procurement & funding of Food Waste Fleet (400k)



# Kerbside Collection & Waste Review

- ◆ New Fleet Delivered March / April 2013
  - ◆ Training for Drivers, Operatives & Technicians
  - ◆ Cease existing service 3<sup>rd</sup> May
  - ◆ Go Live 6<sup>th</sup> May – All Change
- 
- A decorative graphic in the bottom right corner of the slide, consisting of a stylized mountain range or hills in various shades of teal and light blue.

# Challenges

- ◆ Not knowing what you don't know yet
- ◆ Tonnages (best guess)
- ◆ No Collection Day Changes (Prerequisite)
- ◆ Productivity
- ◆ Fleet Performance – Twin Compartment RCVs.....ARGHHHHHHHH!
- ◆ Travel & Downtime



# Achievements

- ◆ Success based on Teamwork across all service areas
  - ◆ 65-70 Tonnes Food Waste Collected Weekly through the new service
  - ◆ Significant Reduction in Waste to Landfill with associated savings
  - ◆ On Schedule to deliver 50% Target by 2014
  - ◆ Procurement of 27 new Waste vehicles in 2013 for delivery of the new service (Circa 3.2 Million pounds)
  - ◆ Service reconfiguration over a weekend & delivering
- 



# Moving Forward

- ◆ Organisational Planning Review – Circa 20m in savings req'd
- ◆ Development of a single site for all Front Line & potentially Back Office Functions
- ◆ Purpose built Fleet Facility
- ◆ Further Roll out of Recycling for Commercial & Flatted Properties
- ◆ Grey Fleet Revisited – Due to Organisational Review
- ◆ Social Transport – Fleet Impact



# Many Thanks

Paul Curran

