



Fighting for funding for roads, highways and street lighting

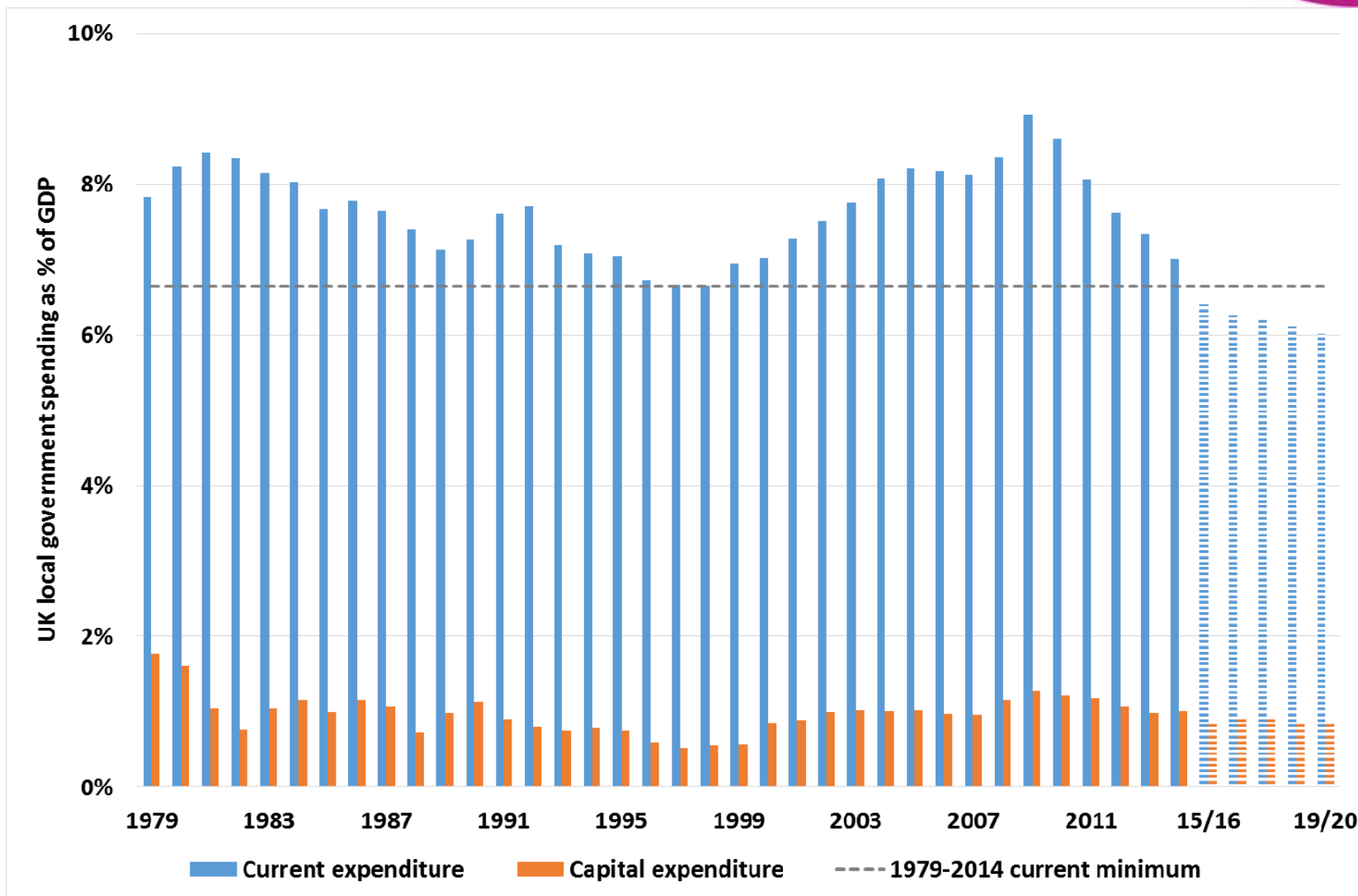
Paul O'Brien,
Chief Executive, APSE

Slide 1

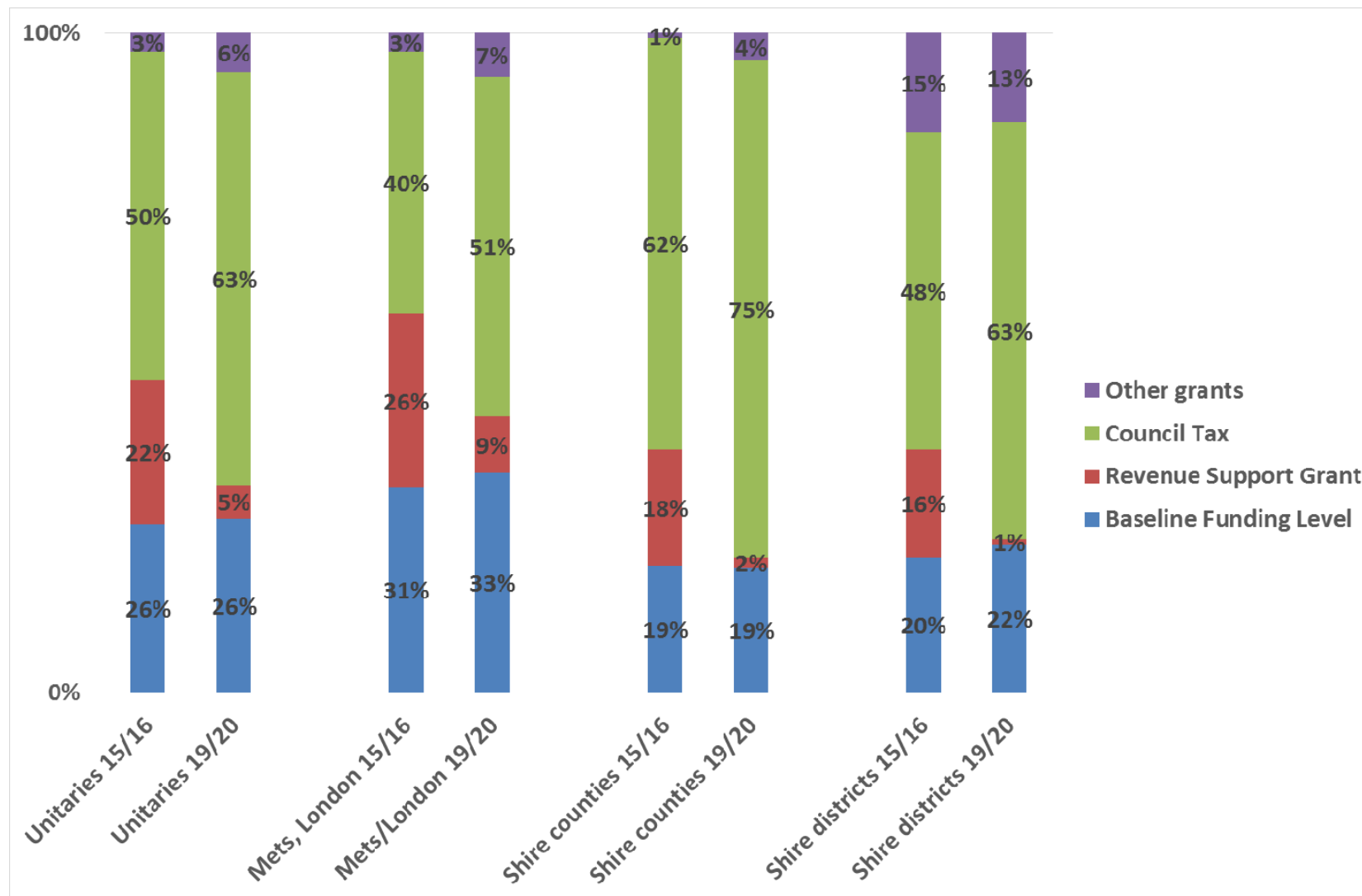
WP1

Wayne Priestley, 12/03/2018

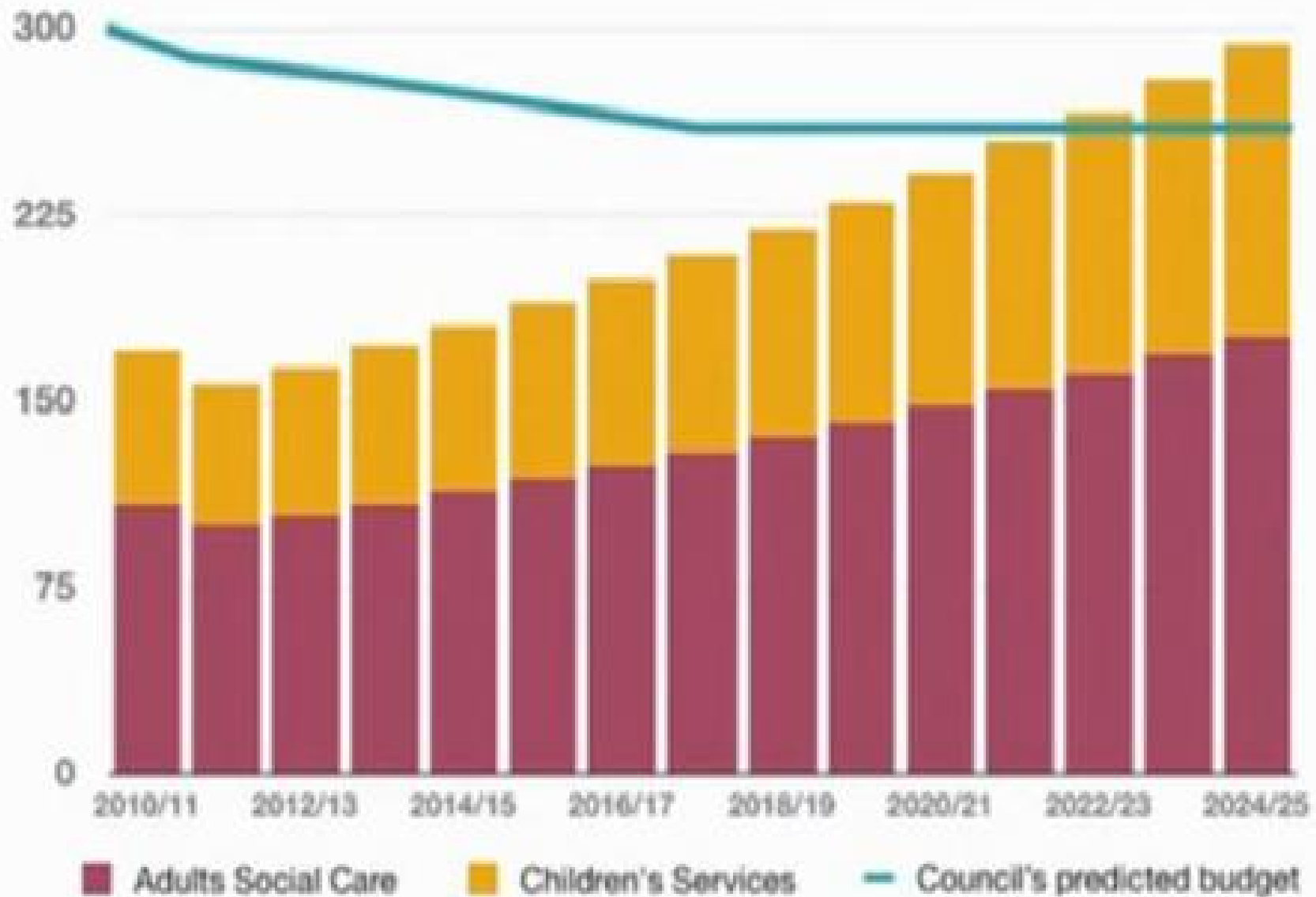
UK local government spending as a share of GDP: current spending, already below the 1979-2014 minimum, is projected to go on falling to 2020



Balance of core spending power 15/16 and 19/20: as RSG shrivels beyond London and the Mets, most LA funding will come from council tax



The 'Graph of Doom'



What has happened to roads, highways and street lighting?



- Neighbourhood grouping
- Total service expenditure % 's in UK
- Average cuts v's areas of deprivation
- Roads and transportation £7.4B
- Average cut 21% to 30%
- Wales phenomenon
- APSE state of the market

State of the market



- Highways
- Finance
- 16/17 to 17/18
- 52% drop
- 18/19
- 63% drop
- Street Lighting
- Finance
- 16/17 to 17/18
- 41% drop
- 18/19
- 50% drop
- Winter Maintenance
- Finance
- 16/17 to 17/18
- 6% drop
- 18/19
- 26% drop

State of the market



- Highways
- Staffing
- Absence 61% acceptable
- Apprentices 66% run
- Training 34% drop
- Age 47
- Street Lighting
- Staffing
- Absence 70% acceptable
- Apprentices 37% run
- Training 26% drop
- Age 46
- Winter Maintenance
- Staffing
- Not separated from main Highways figures

State of the market



- 75% 2 years to reach acceptable standard
- Target time to restore street lights
- Claims increasing
- Energy saving initiatives
- Salt supplies



Has Austerity bitten?

What the public think

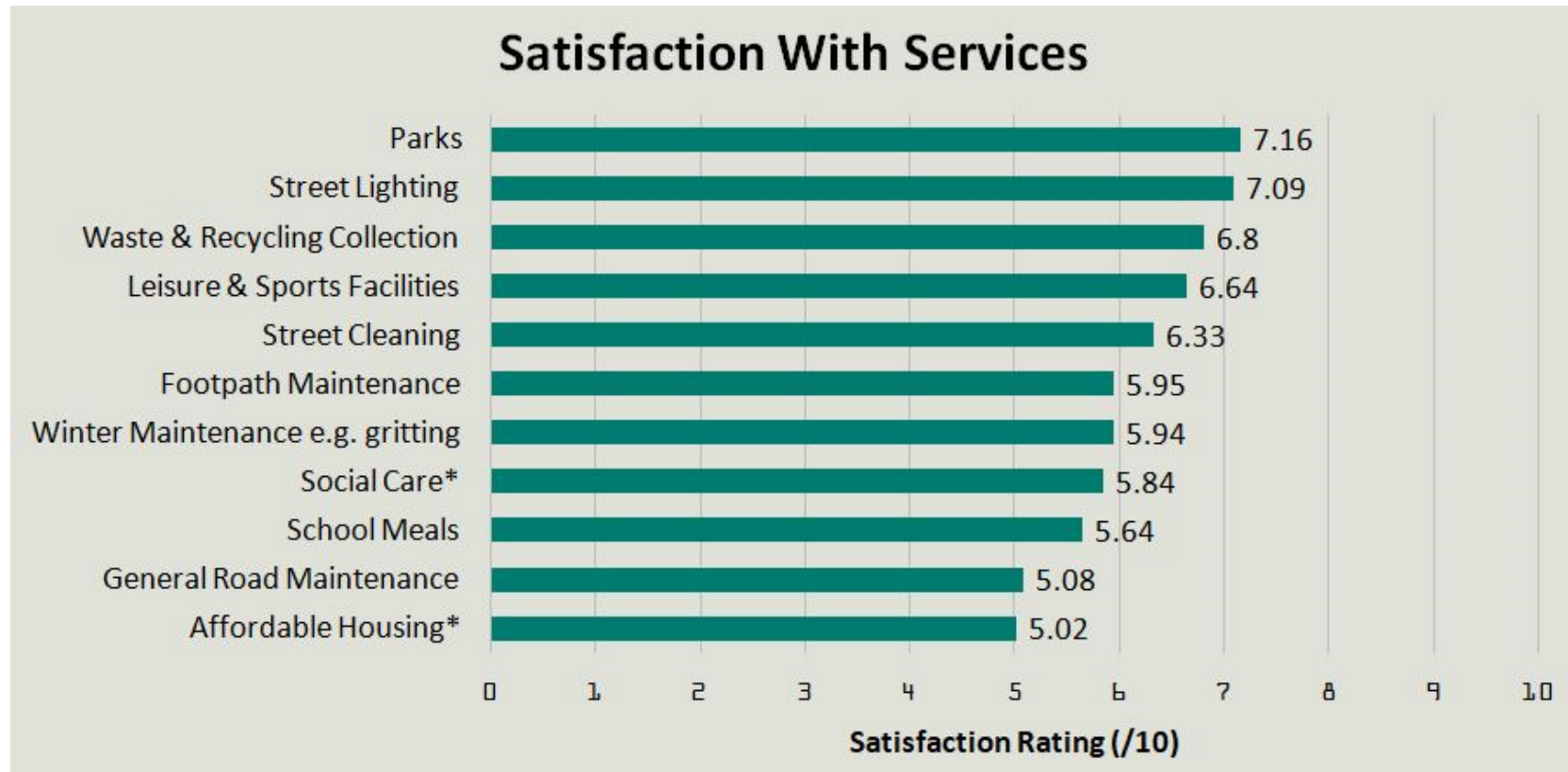
Key findings: Trust and taxes remain high



As in 2016, Trust in Councils and Councillors high versus Government ministers and Private Companies.

- Five times as many still trust the local Council over the Government to make decisions about how services are delivered provided in your local area
- Eight times as many trust local councillors over government ministers to make decision about their local area
- Five and half times as many trusted council to provide services in their local area over a private company with people trusting the council 7.5 times more than the government.
- 79% would like the government to give more money to local councils to spend at the local level for services that are their neighbourhood.

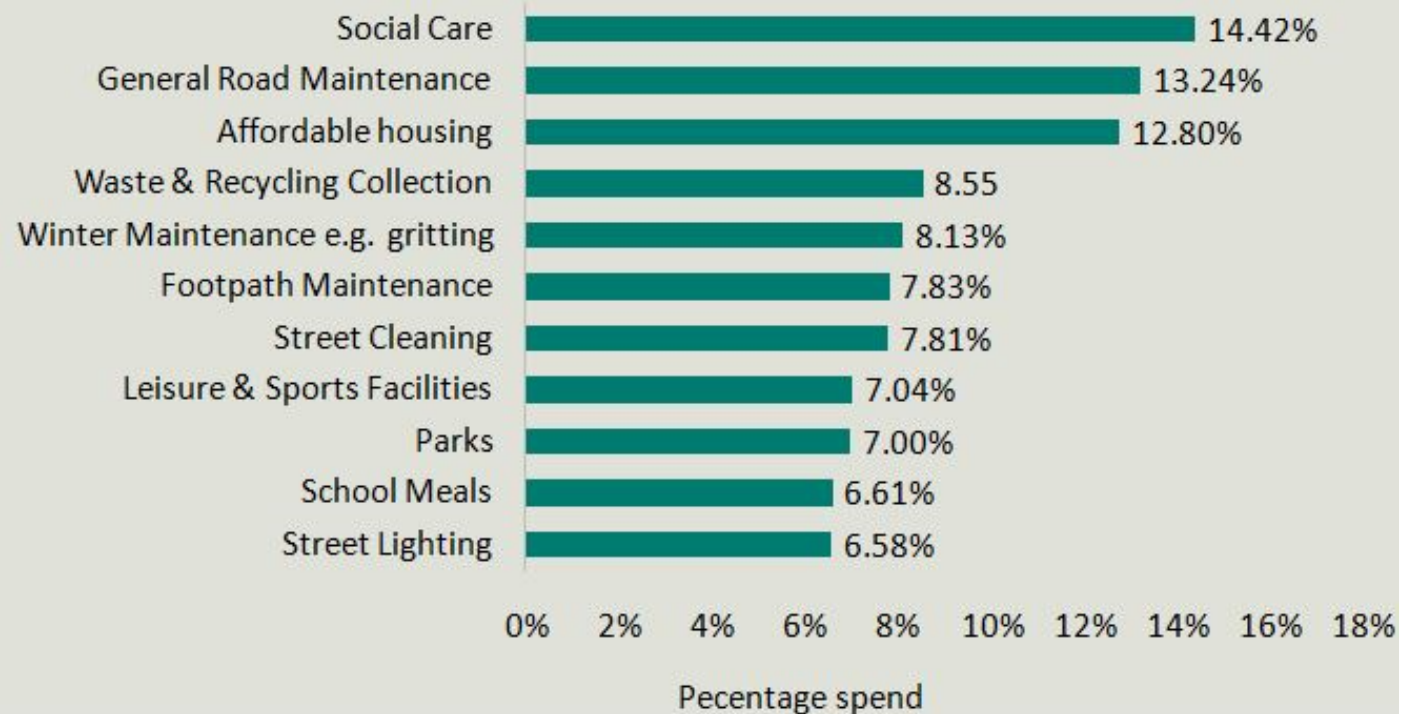
Performance of Councils services positive



How the public would like extra funds spent



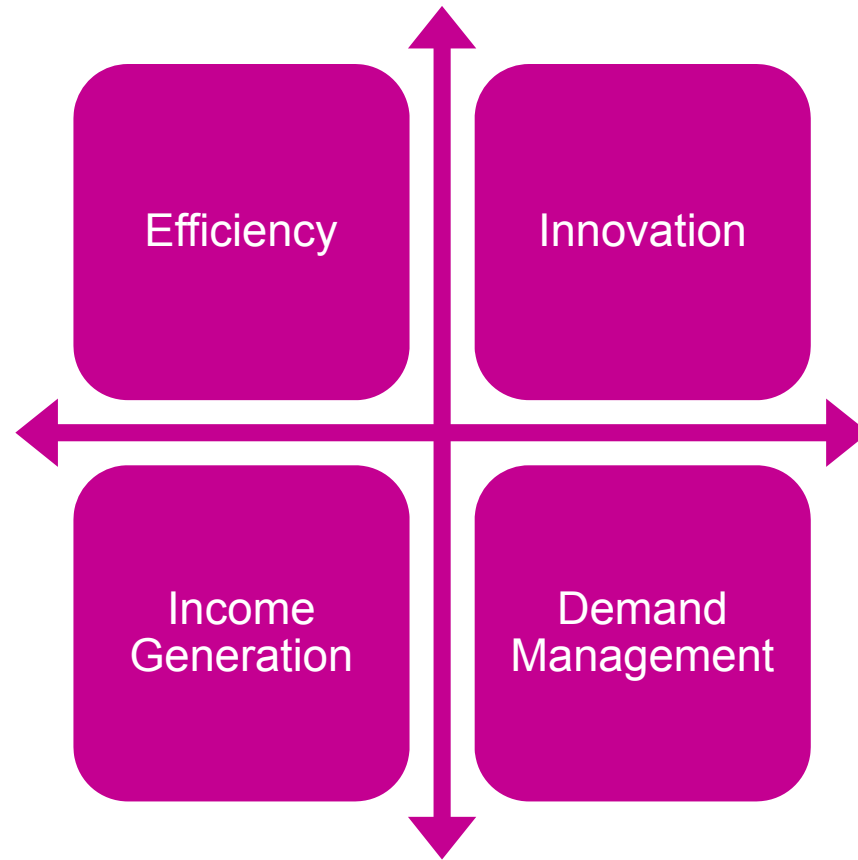
What percentage of the extra money would be spent on each of the 11 services below?



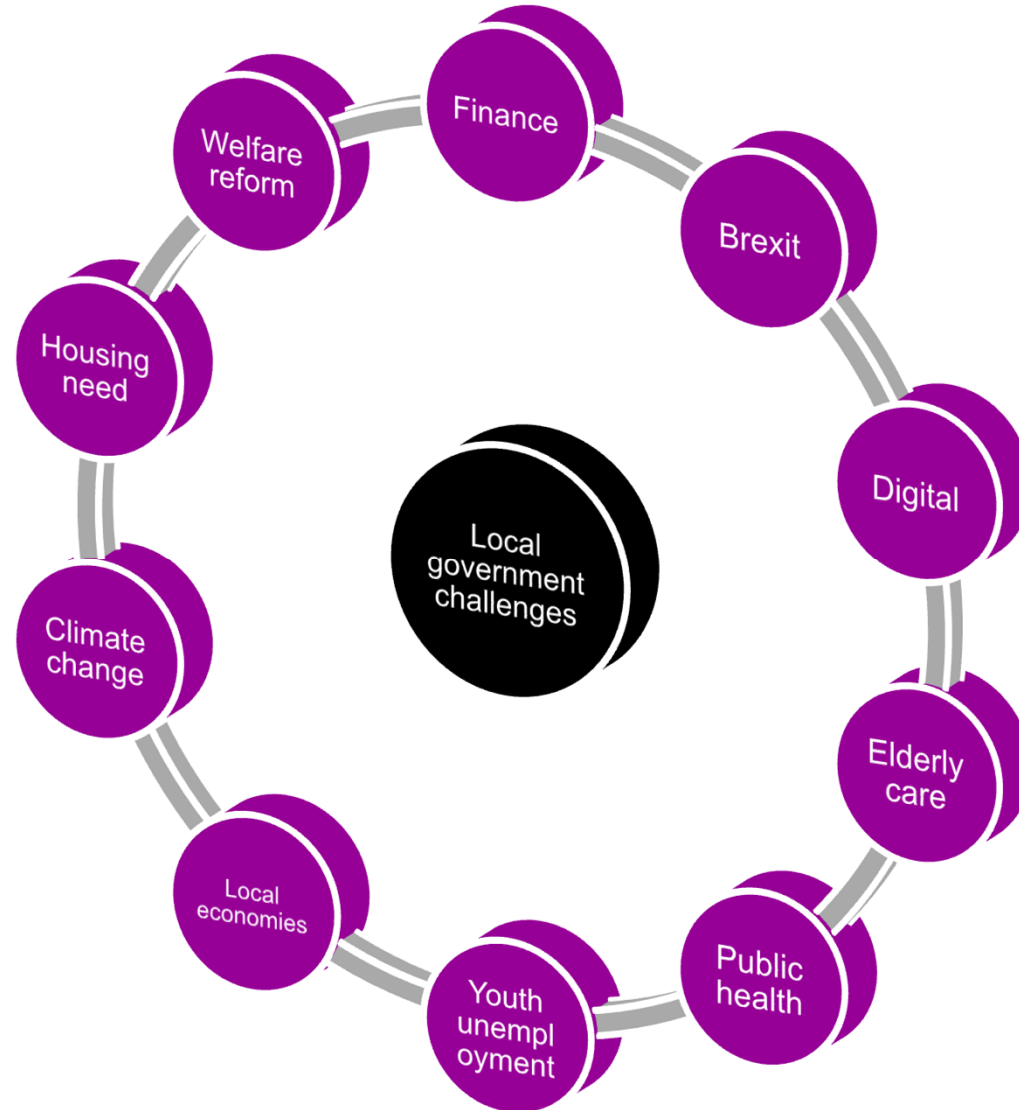
What will local government look like in 2020?



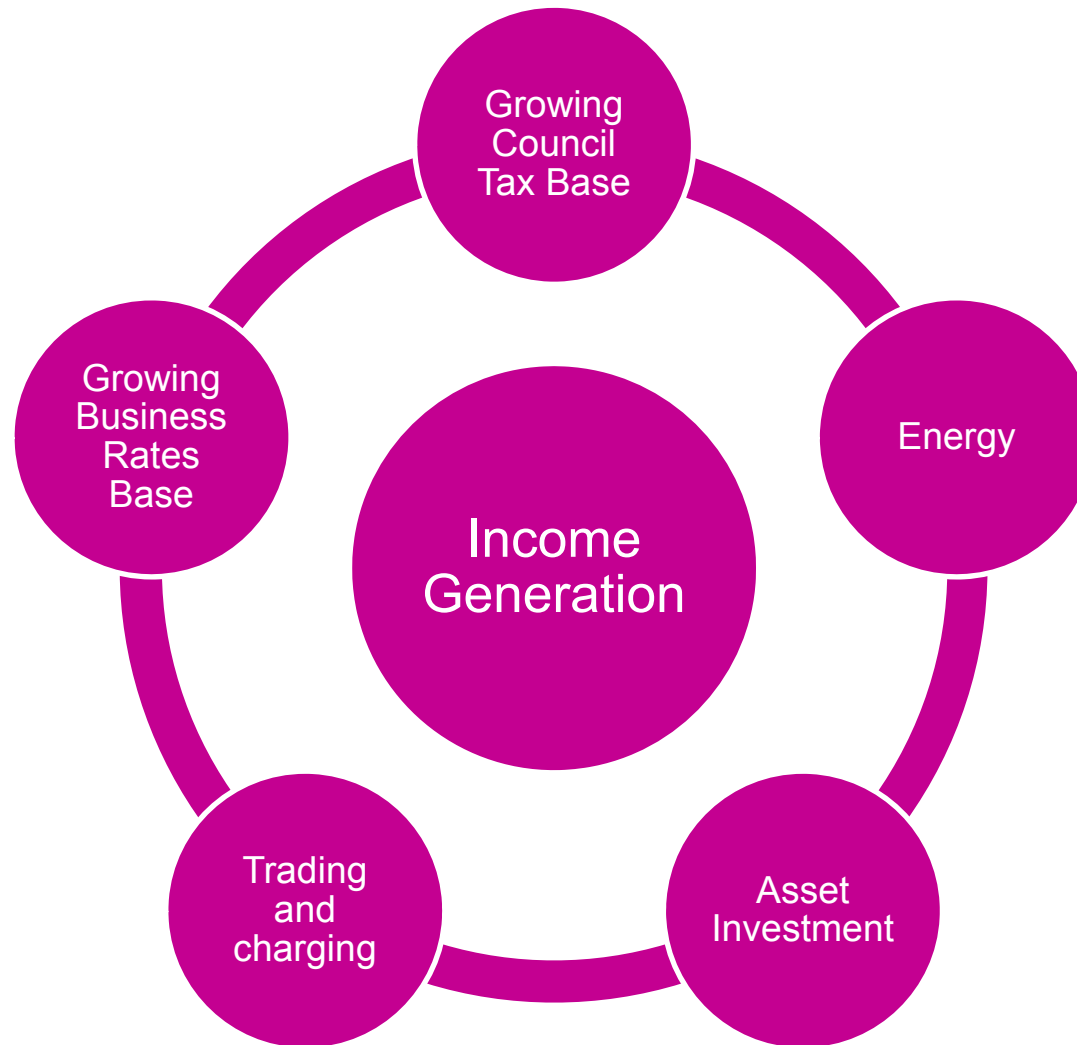
The pillars of excellence



Public policy challenges



Commercialisation Strategy



State of the market



- Highways
- Income
- Sell services
48% do, 23%
expect soon
- 87% Directly
- Street Lighting
- Income
- Sell services
54% do, 16%
expect soon
- Winter
Maintenance
- Income
- Sell services
36% do, 13%
expect soon

Conclusions



- Budgets continuing to drop up to and 2020
- Sector response been good in terms of cost reduction, efficiency and improving productivity
- Public **currently** supportive of council roads services
- This only takes us so far
- We now need to continue to seek out income generation opportunities to offset budget cuts
- Need for a commercialisation strategy
- Time for a spirit of municipal entrepreneurialism

LOCAL SERVICES

LOCAL SOLUTIONS



Contact details

Paul O'Brien

Chief Executive

Email: po'brien@apse.org.uk

Twitter: [@apsetweets](https://twitter.com/apsetweets)

Association for Public Service Excellence

2nd floor Washbrook House, Lancastrian Office Centre, Talbot Road,
Old Trafford, Manchester M32 0FP.

telephone: 0161 772 1810

fax: 0161 772 1811

web: www.apse.org.uk



INVESTOR IN PEOPLE



ISO 14001
REGISTERED FIRM

GB 11409



ISO 9001
REGISTERED FIRM

GB 11132



ISO 27001
REGISTERED FIRM

GB 14074