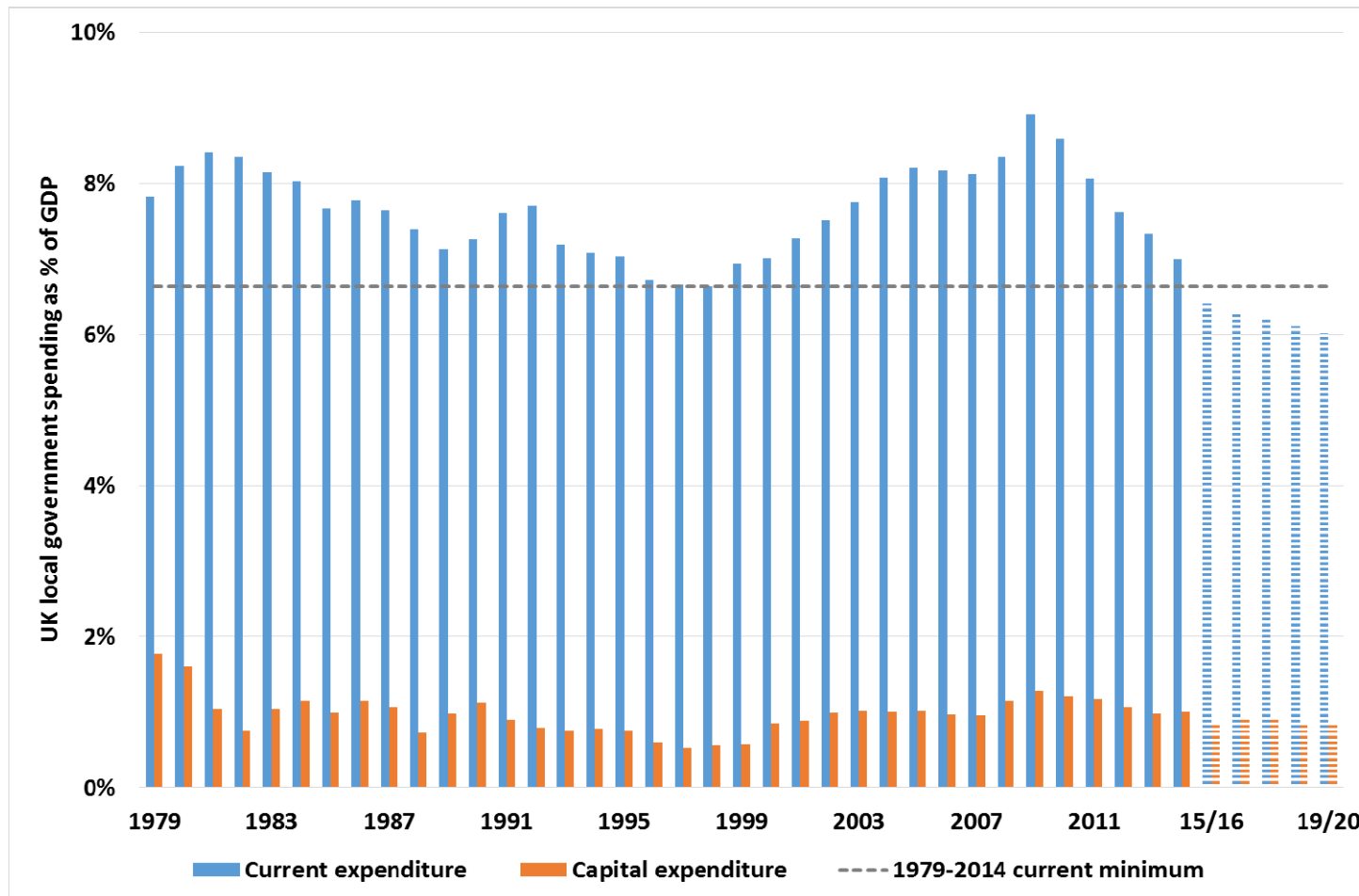




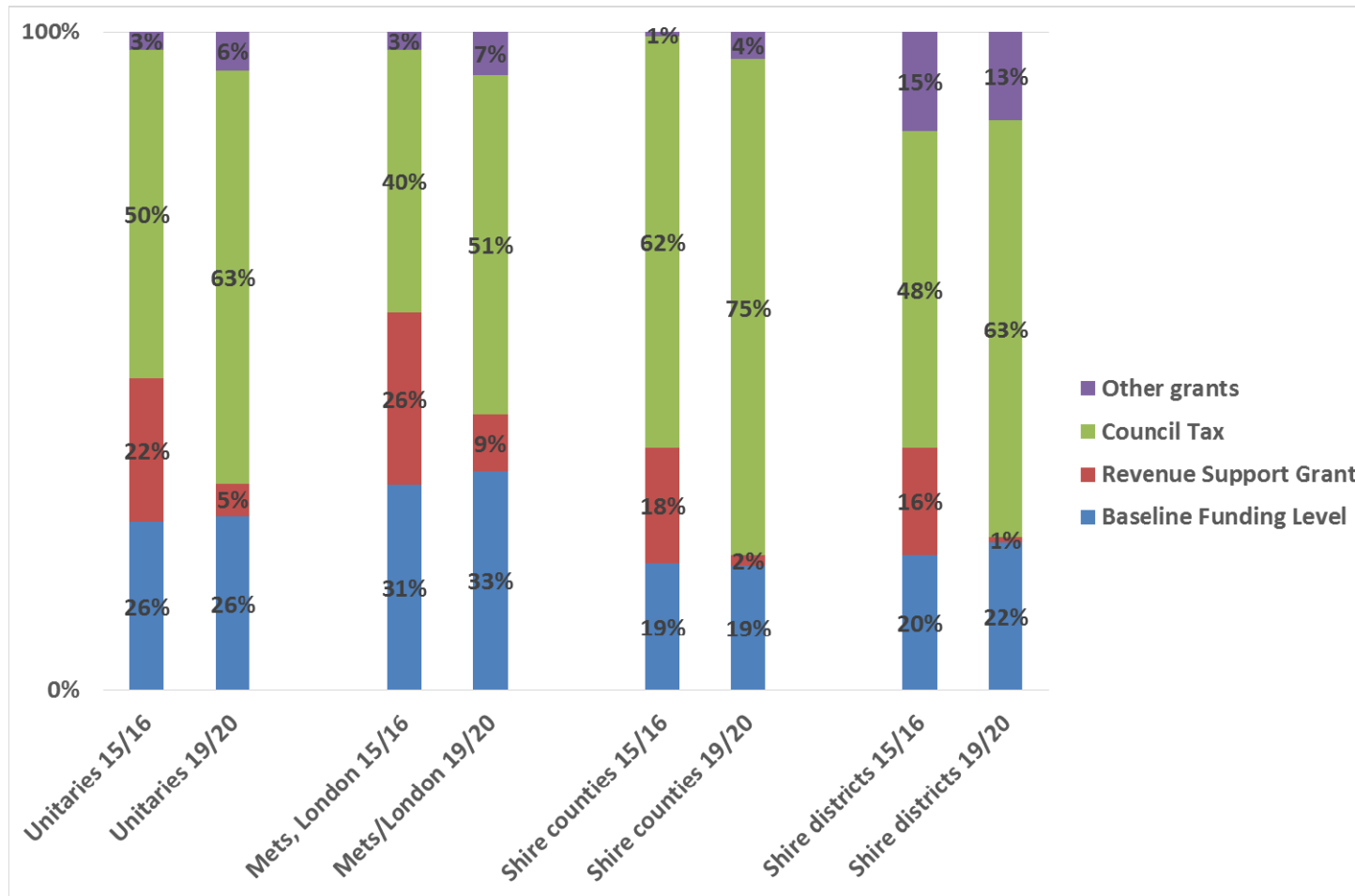
# **Brexit, funding and the future! A picture from across the UK local government sector**

Paul O'Brien,  
Chief Executive, APSE

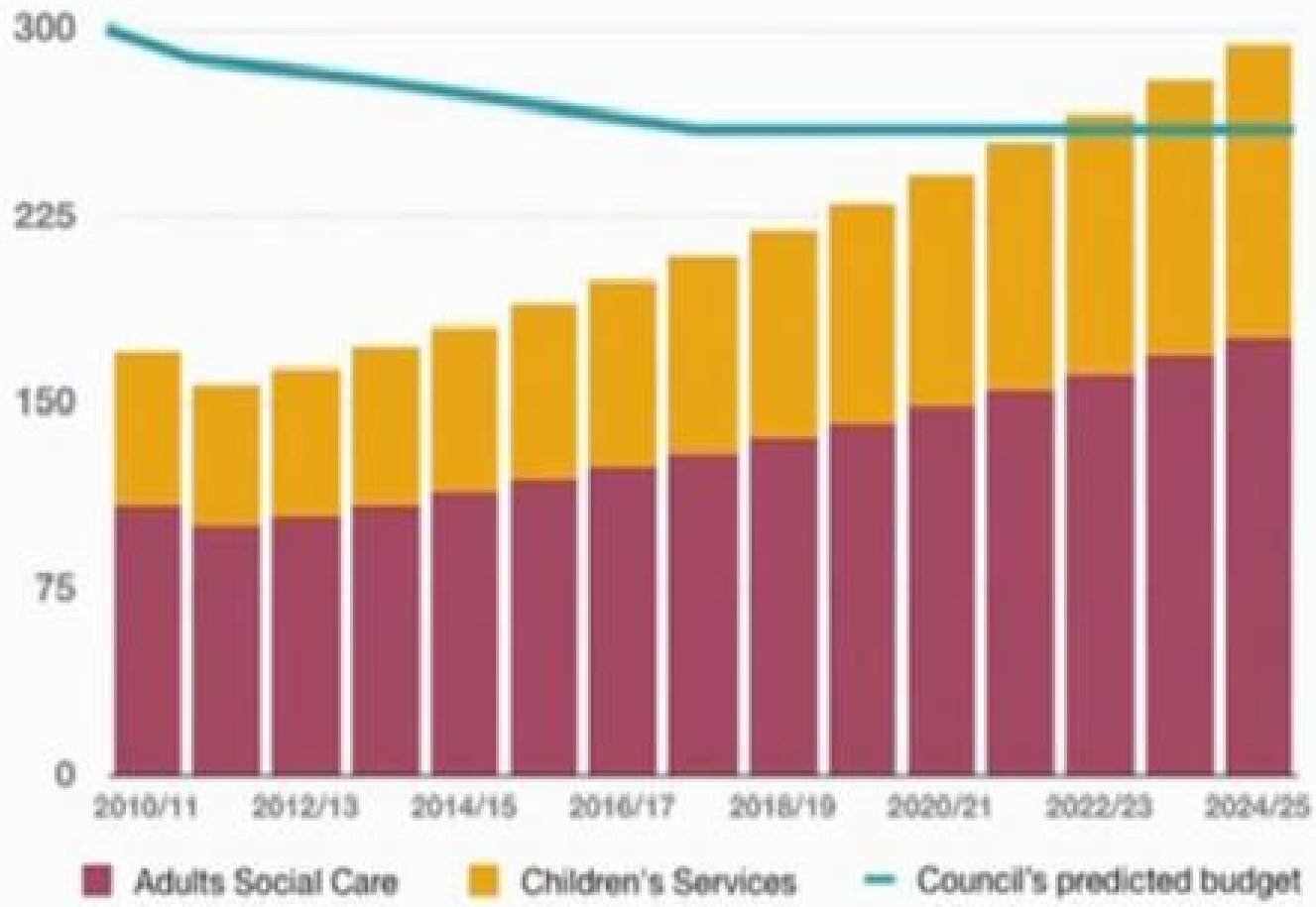
# UK local government spending as a share of GDP: current spending, already below the 1979-2014 minimum, is projected to go on falling to 2020



**Balance of core spending power 15/16 and 19/20:**  
as RSG shrivels beyond London and the Mets, most  
LA funding will come from council tax



## The 'Graph of Doom'



# Brexit

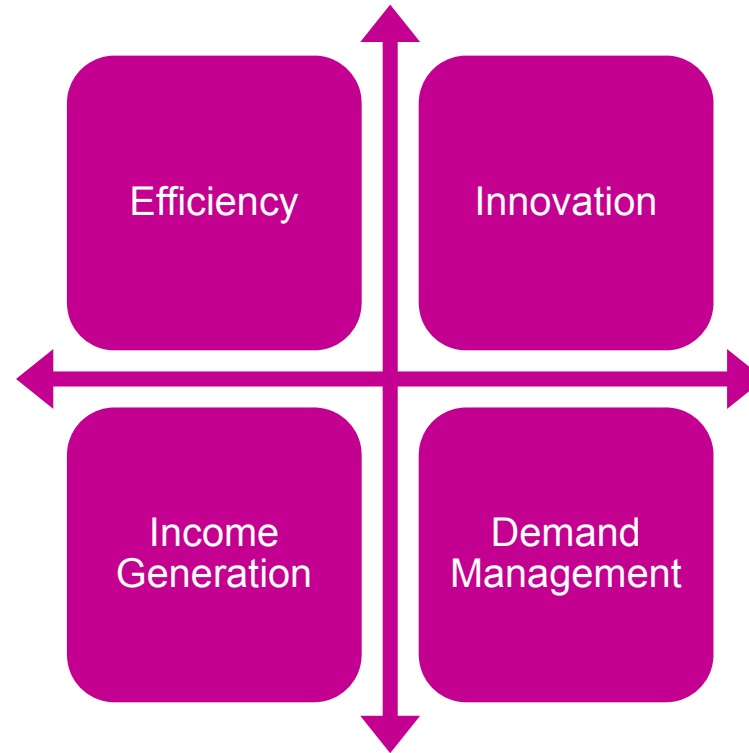


- Eye off the 'domestic' ball?
- Legislative treacle
- Economic outlook
- Procurement
- Environment
- Workforce
- Price of raw materials
- Revisit 2016 CSR in 2017 budget
- Fiscal stimulus – invest in local government

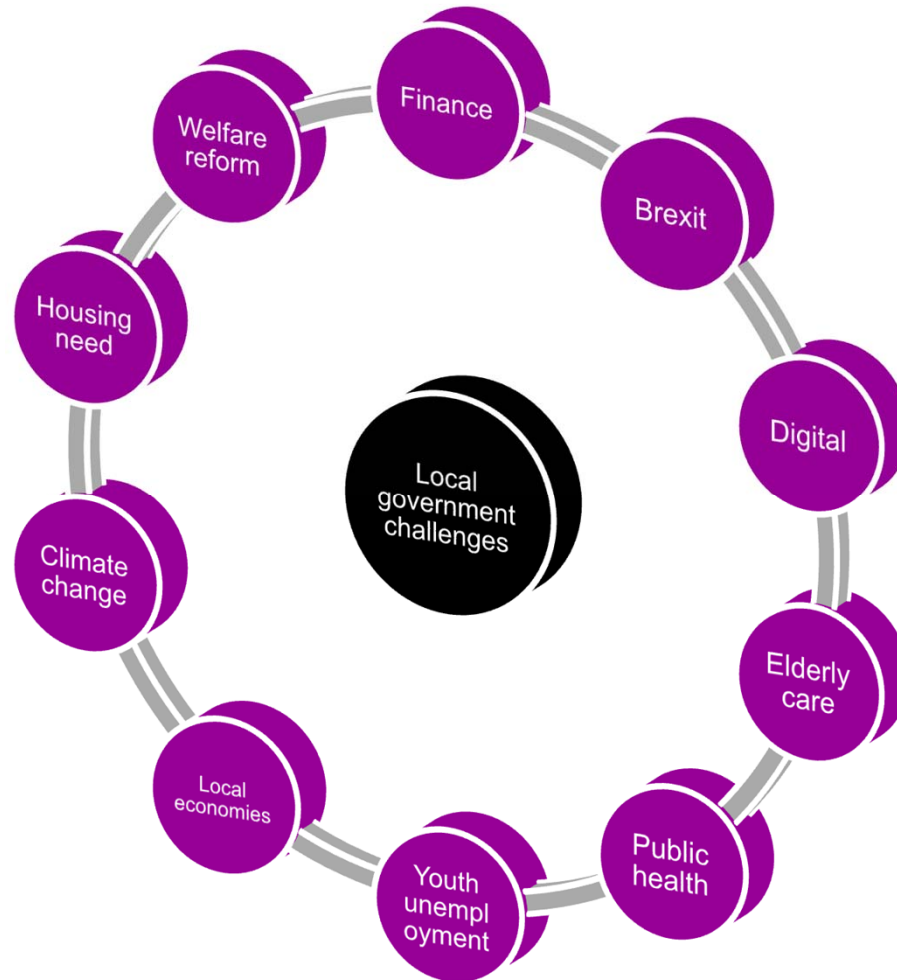
# What will local government look like in 2020?



# The pillars of excellence

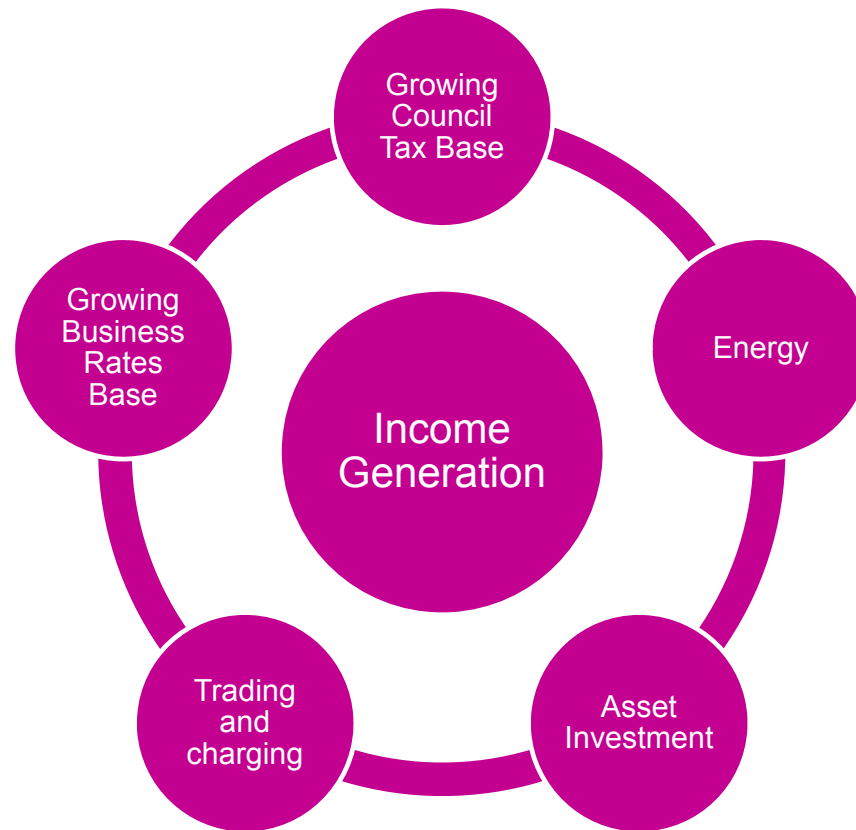


# Public policy challenges





# Commercialisation Strategy



# Conclusions



- Budgets uncertainty up to and beyond 2020
- Sector response been good in terms of cost reduction, efficiency and improving productivity
- This only takes us so far
- We now need to seek out income generation opportunities to offset budget cuts
- Need for a commercialisation strategy
- Time for a spirit of municipal entrepreneurialism

**LOCAL SERVICES**

**LOCAL SOLUTIONS**



## Contact details

**Paul O'Brien**

**Chief Executive**

**Email: [po'brien@apse.org.uk](mailto:po'brien@apse.org.uk)**

**Twitter: [@apsetweets](https://twitter.com/apsetweets)**

**Association for Public Service Excellence**

2nd floor Washbrook House, Lancastrian Office Centre, Talbot Road,  
Old Trafford, Manchester M32 0FP.

**telephone: 0161 772 1810**

**fax: 0161 772 1811**

**web: [www.apse.org.uk](http://www.apse.org.uk)**

**[www.apse.org.uk](http://www.apse.org.uk)**



INVESTOR IN PEOPLE



**GB 11409**



**GB 11132**



**GB 14074**