



Association for Public Service Excellence

Defining a new municipalism

Paul O'Brien,
Chief Executive, APSE

www.apse.org.uk

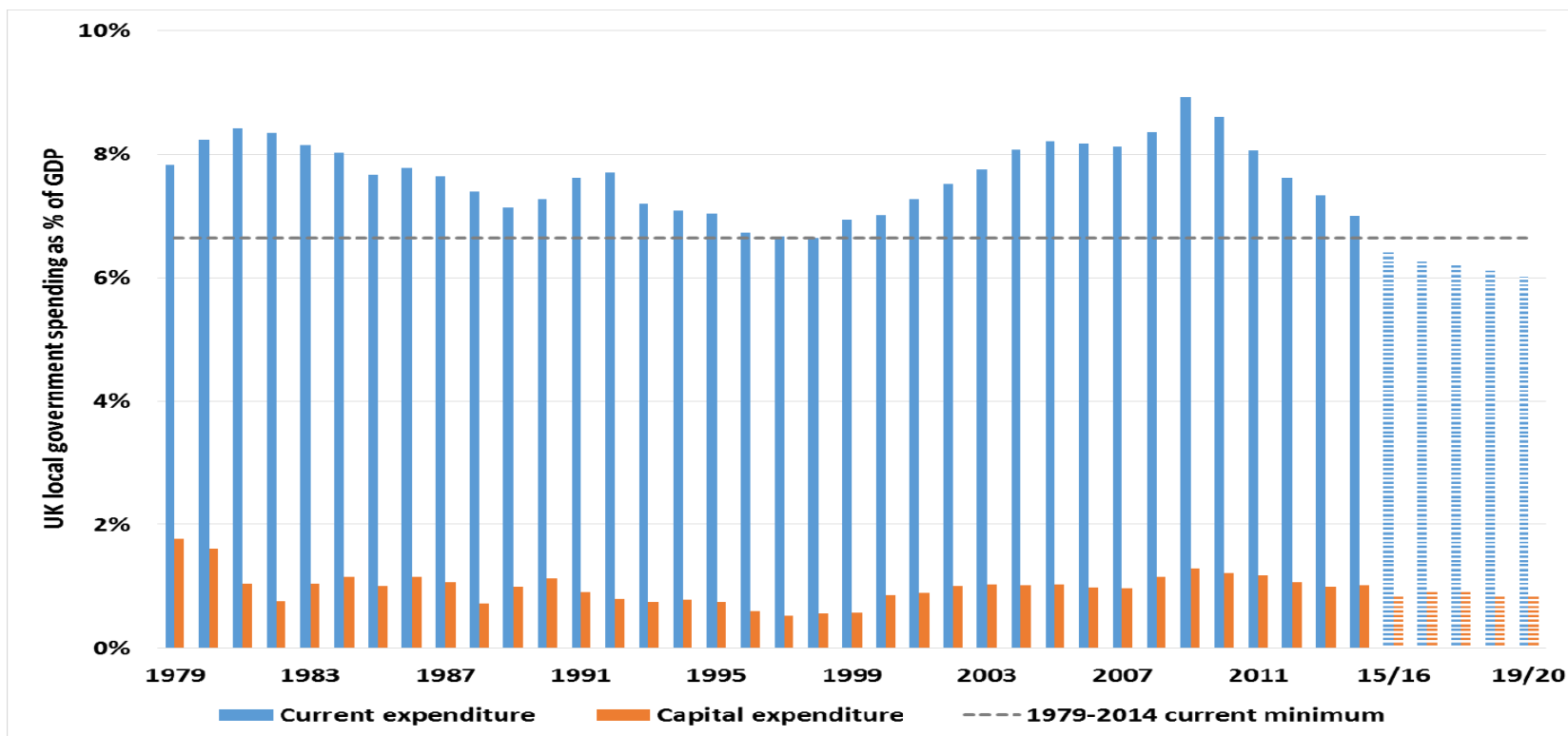


New municipalism

- Permanent austerity?
- Local finance base
- Multiple public policy crisis
- Matching solutions with funding sources
- Building community wealth
- Municipal entrepreneurship
- Stimulating local economy and community

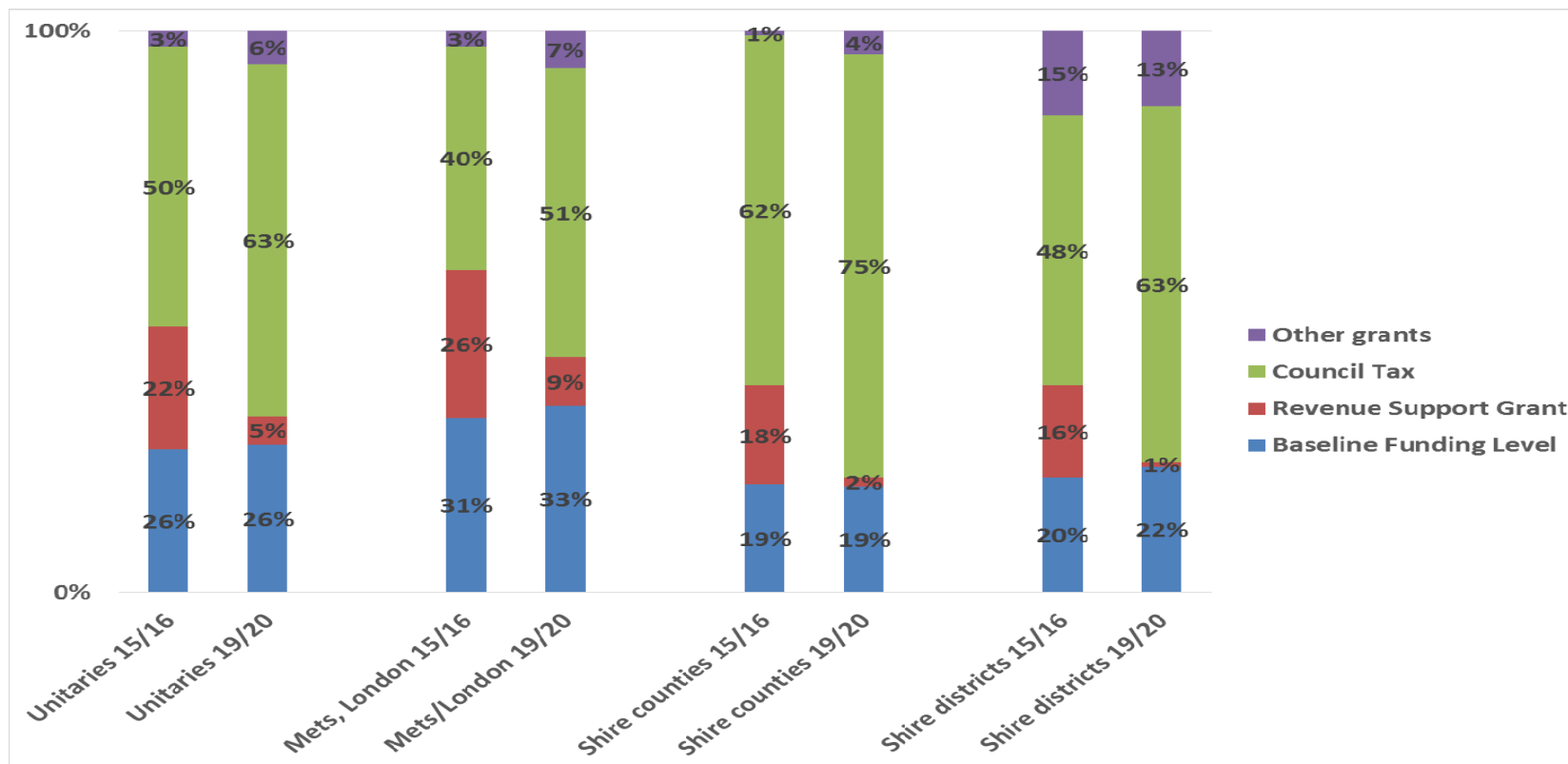


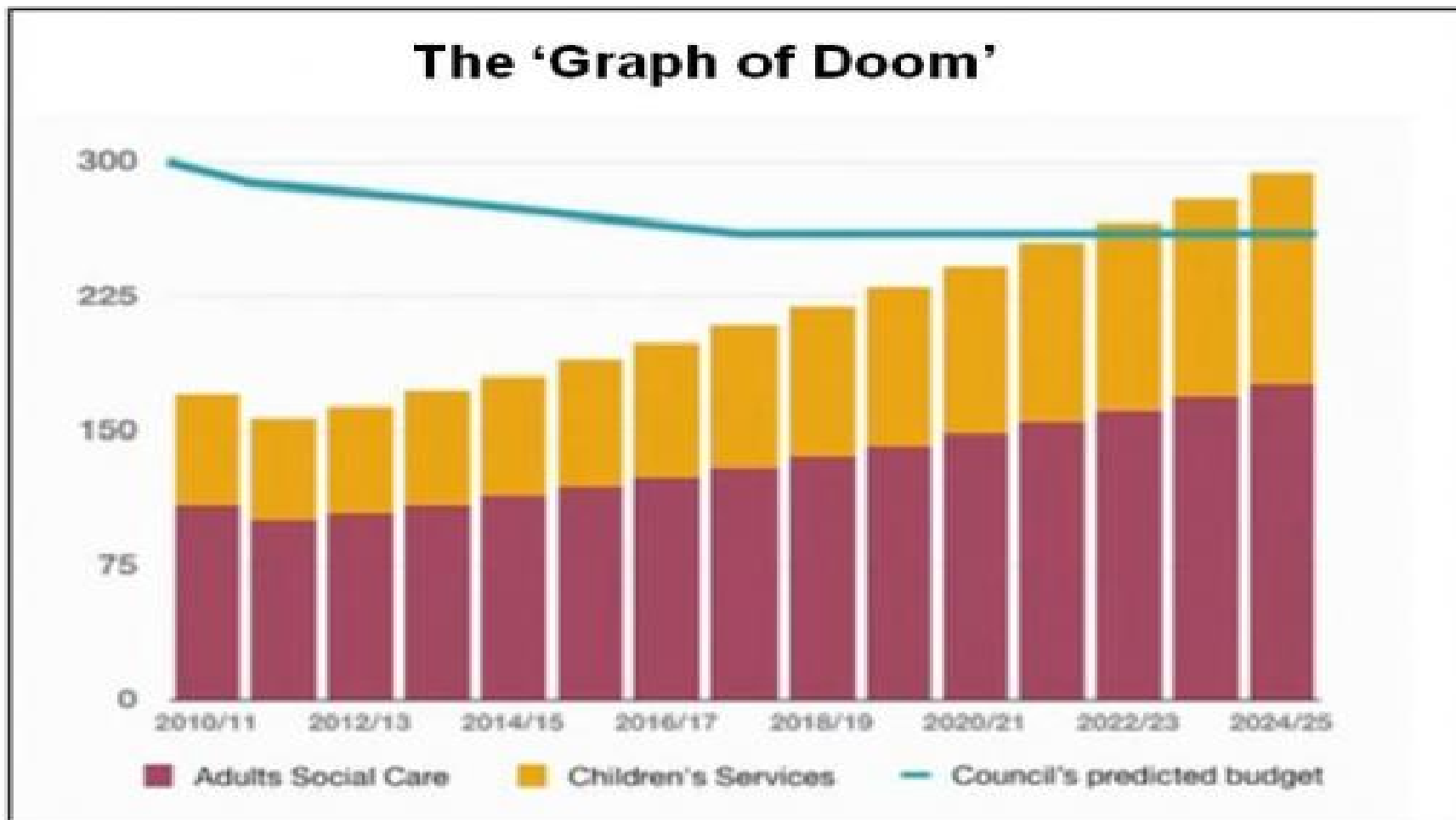
UK local government spending as a share of GDP: current spending, already below the 1979-2014 minimum, is projected to go on falling to 2020





Balance of core spending power 15/16 and 19/20: as RSG shrivels beyond London and the Mets, most LA funding will come from council tax







Association for Public Service Excellence



www.apse.org.uk



Performance of councils services positive



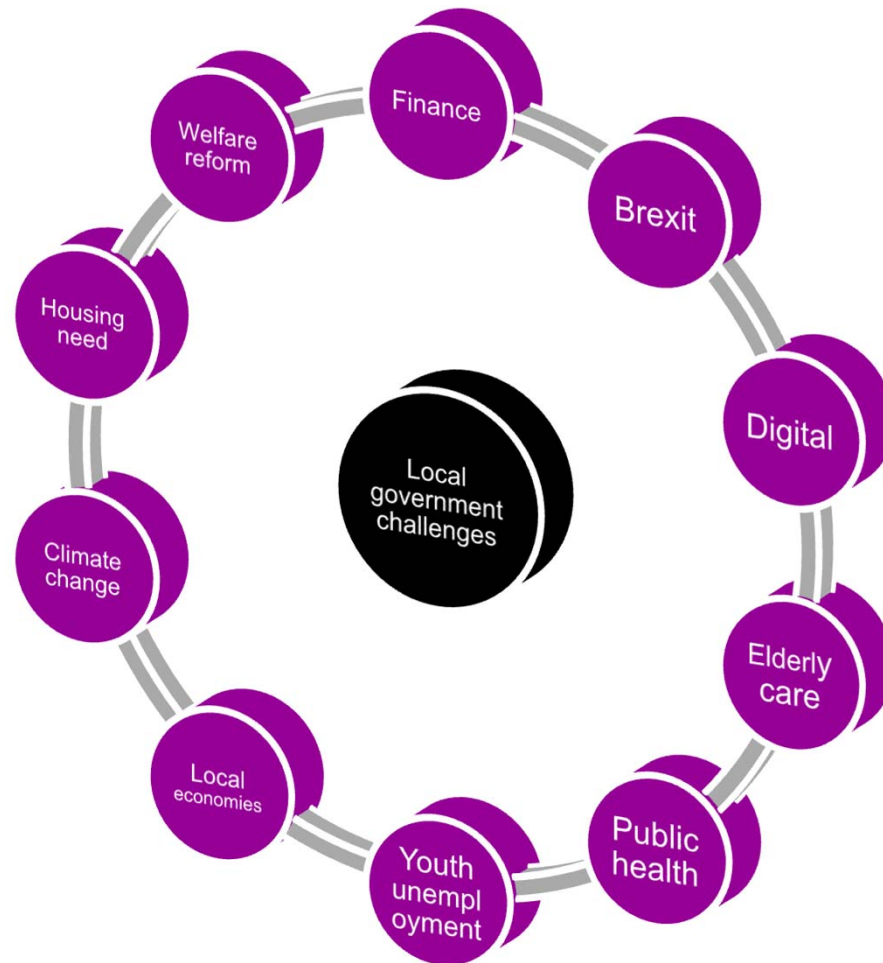


What will local government look like in 2020?

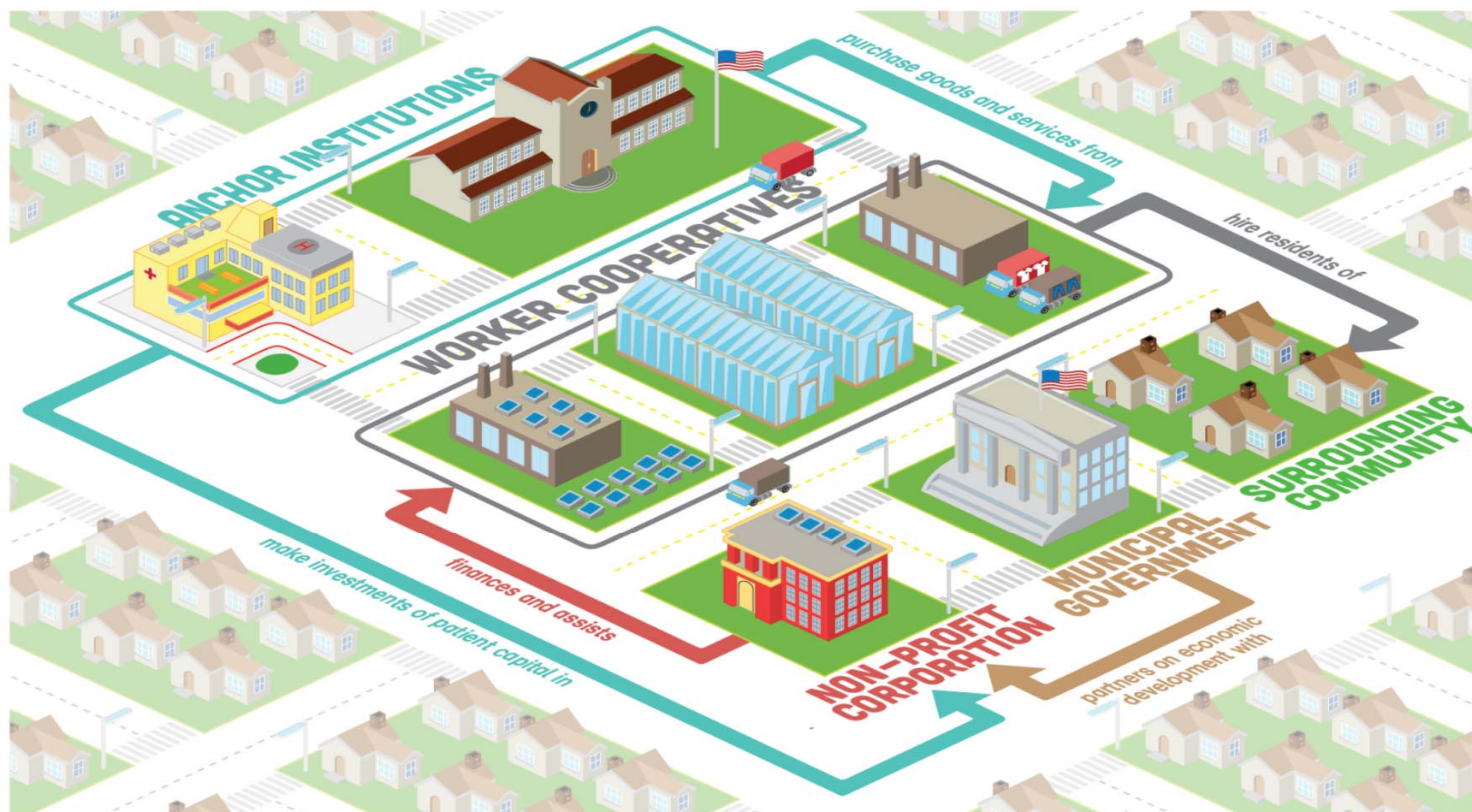


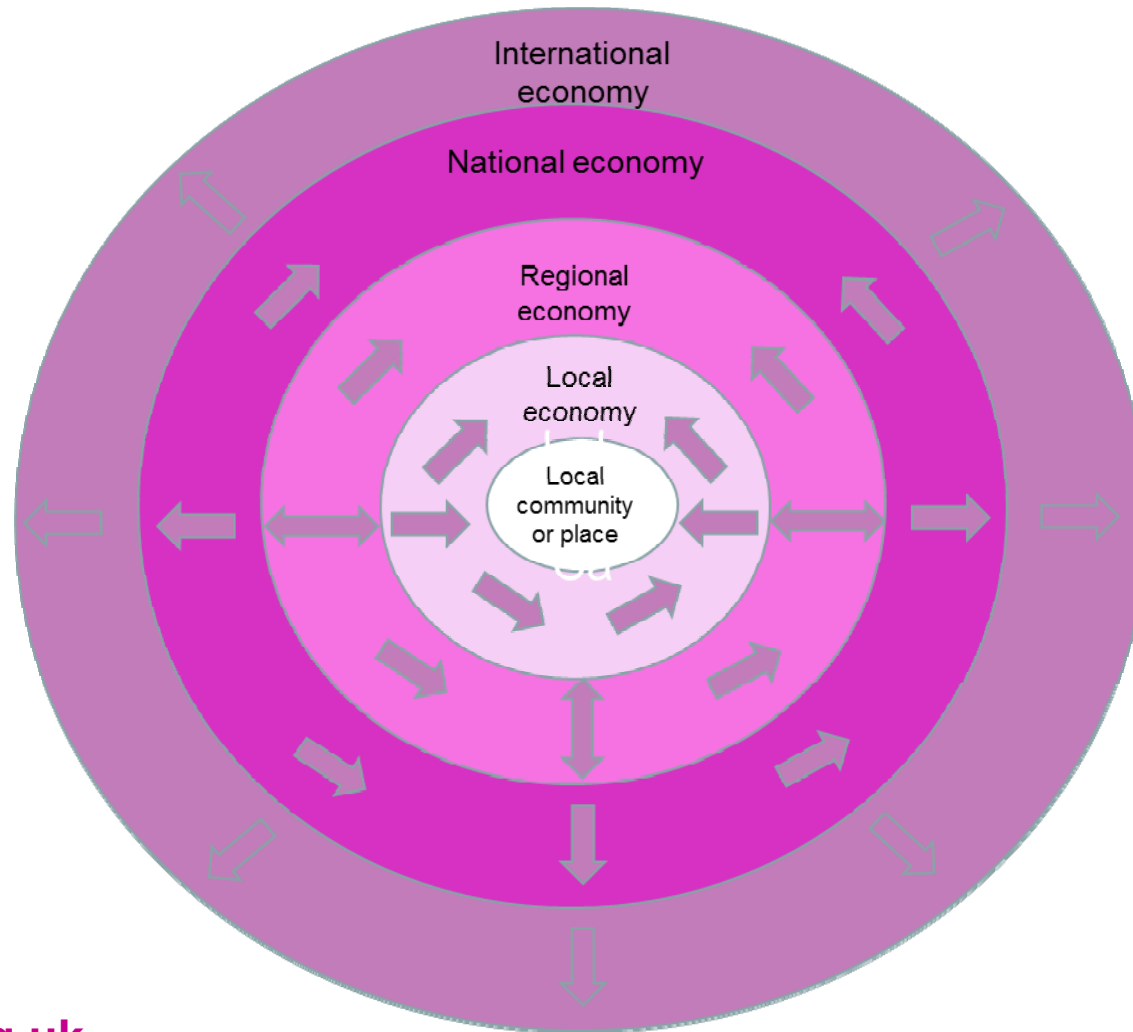


Public policy challenges



The Cleveland Model





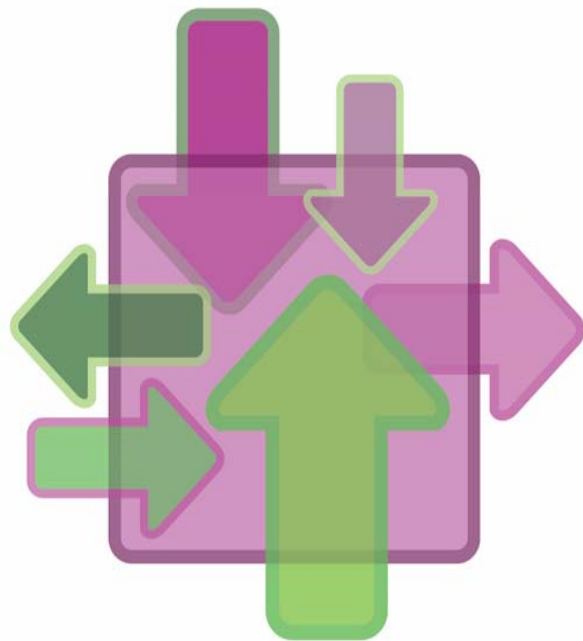


Association for Public Service Excellence

Insourcing:



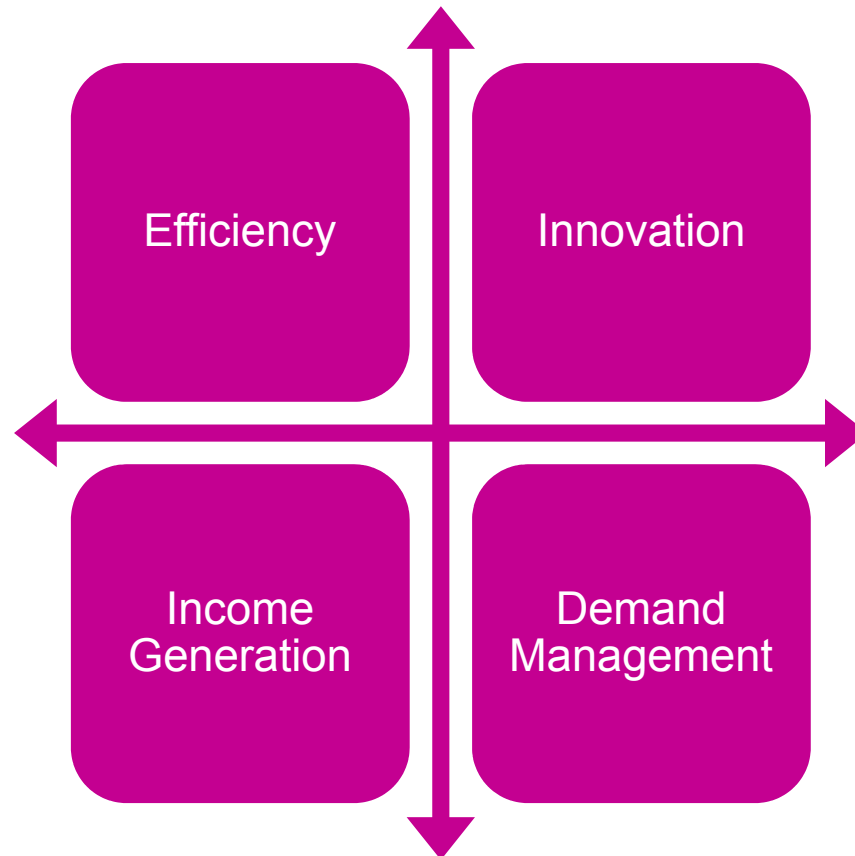
A guide to bringing local authority services back in-house



www.apse.org.uk



The pillars of excellence





Association for Public Service Excellence

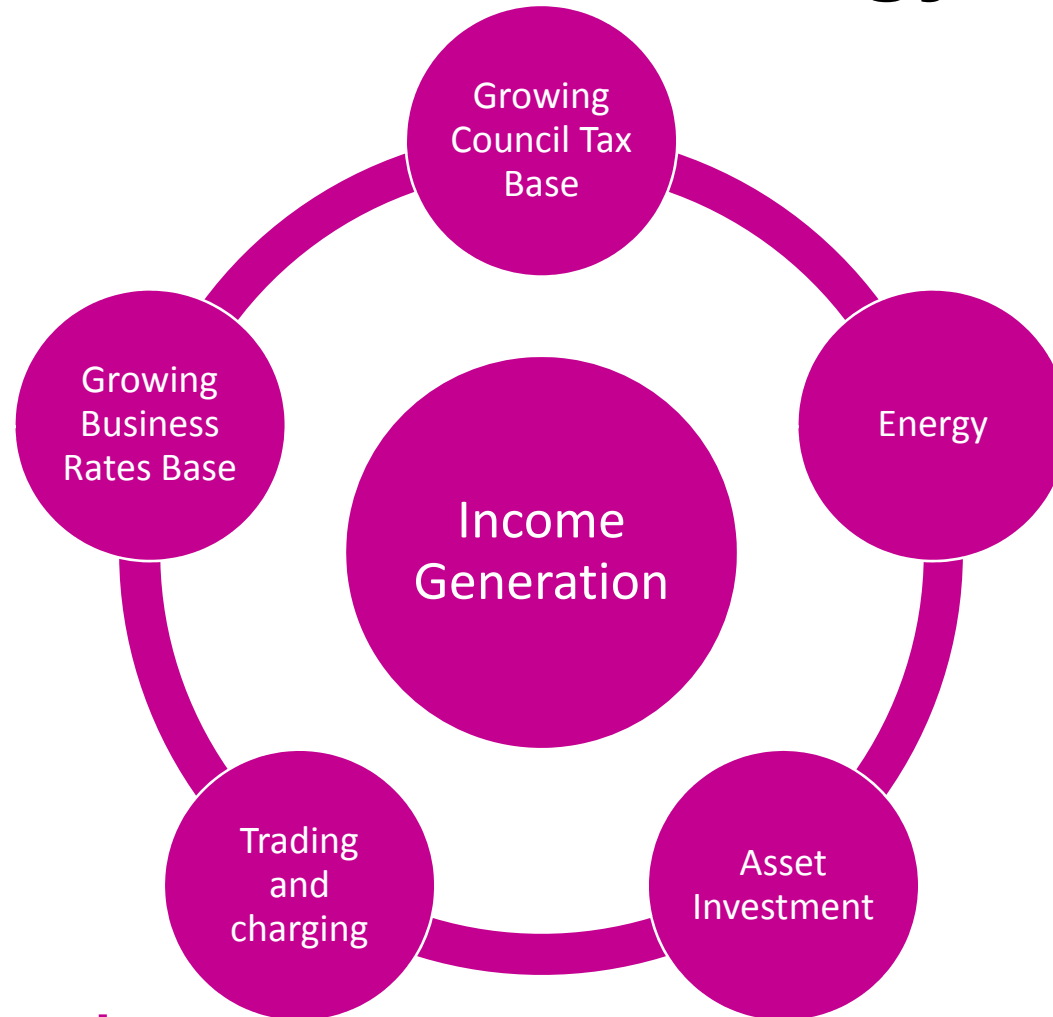
Municipal entrepreneurship



www.apse.org.uk



Commercialisation strategy

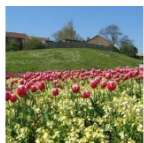


Income generation





Income generation



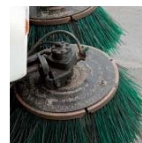
80% intend to increase fees & charges over next 2-3 years

- Sports pitch lettings (91%)
- Allotments (70%)
- Festivals/concerts/events (68%)
- Cafes in parks (66%)
- Bowling greens (64%)
- Ice cream vans/mobile caterers (60%)
- Fairgrounds (58%)
- Renting buildings and land (49%)
- Sponsorship (43%)
- Tennis courts (42%)
- Boot camps (32%)
- Mini golf (28%)
- Golf course green fees (26%)
- Sale of land (26%)



56% indicated that they have income generation schemes

- Selling recycling materials (97%)
- Renewable energy (9%)
- Anaerobic digester (6%)
- Solid fuel recovery (3%)



43% answered that they have income generation schemes

- Property clearance
- Private sector cleansing
- Cleansing for developers
- Sponsorship & advertising
- Events e.g. sporting events
- Care of garden charging
- Other in-house sections e.g. parks
- Services to parish councils
- Other public services e.g. NHS



50% currently sell their services outside of the local authority and over 20% considering it as an option

- Taxi testing (53%)
- MOT services (60%)
- Commercial body shop facility (11%)
- Authorised testing facility for VOSA testing (19%)
- Driver training (72%)
- CPC approved training provider (26%)



Association for Public Service Excellence



Building homes, creating communities

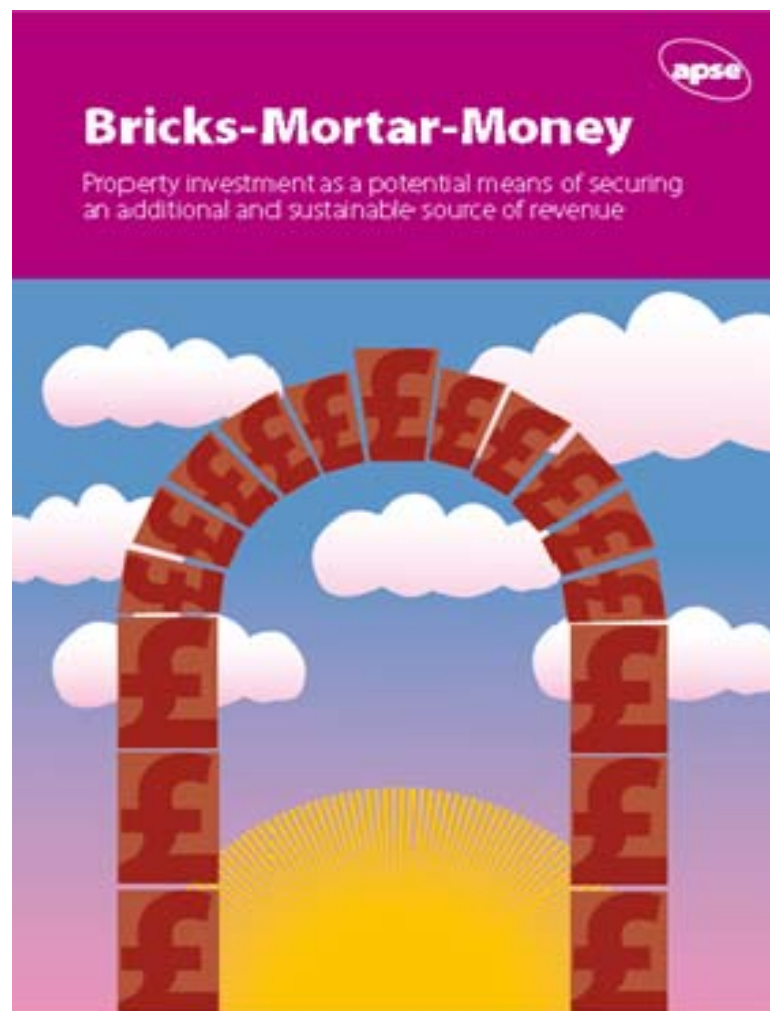
Ensuring councils provide innovative solutions to meeting housing need



www.apse.org.uk



Association for Public Service Excellence



www.apse.org.uk



Association for Public Service Excellence



The new municipalism

Taking back entrepreneurship



www.apse.org.uk

NEW MUNICIPALISM

Delivering for local people and local economies



Association for Public Service Excellence

Contact details

Paul O'Brien, Chief Executive

Email: po'brien@apse.org.uk

[@apsetweets](#)



GB 11409



GB 11132



GB 14074

Association for Public Service Excellence

3rd floor, Trafford House, Chester Road,
Old Trafford, Manchester M32 0RS.

telephone: 0161 772 1810

web: www.apse.org.uk