



# **Fighting for funding for roads, highways and street lighting**

Paul O'Brien,  
Chief Executive, APSE

**Slide 1**

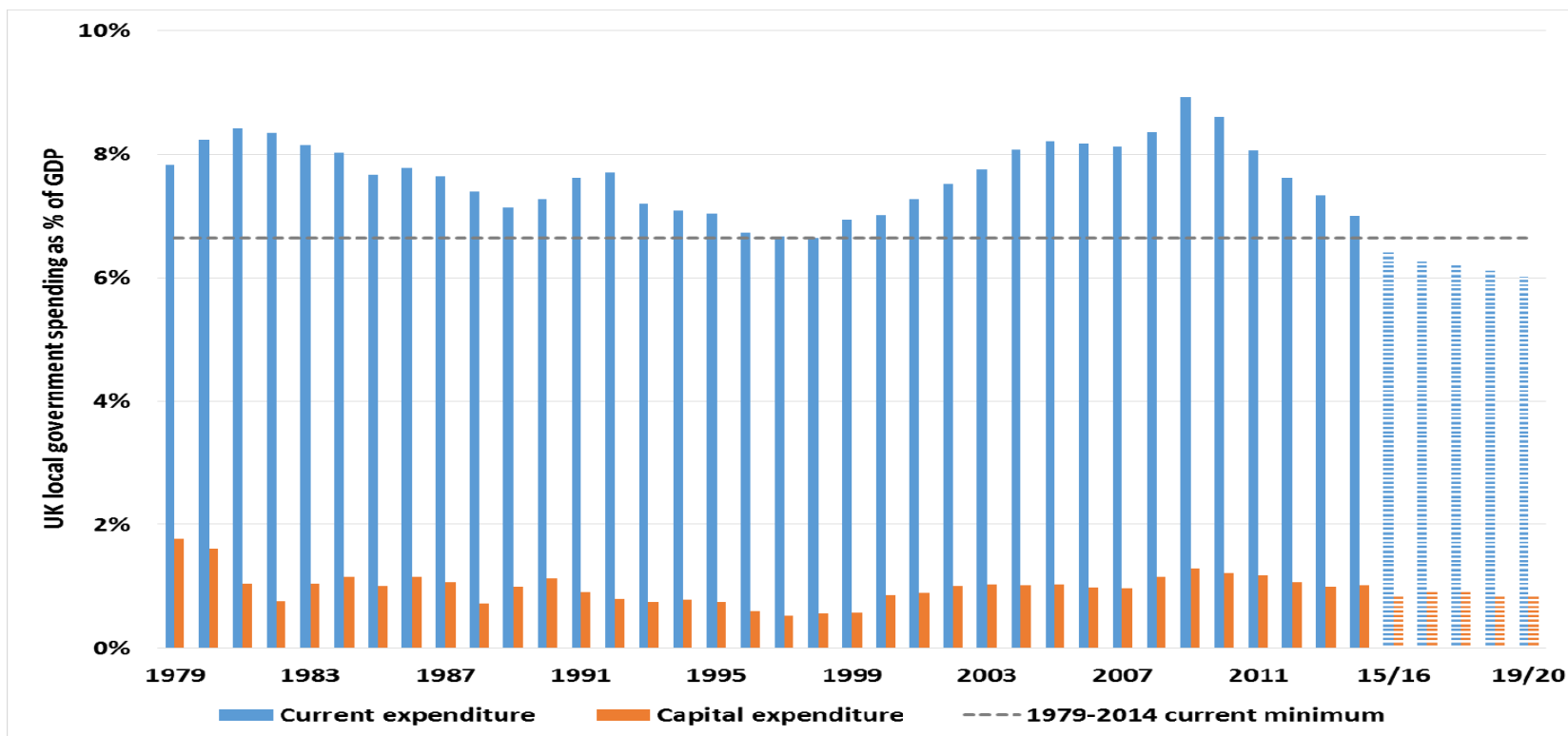
---

**WP1**

Wayne Priestley, 12/03/2018

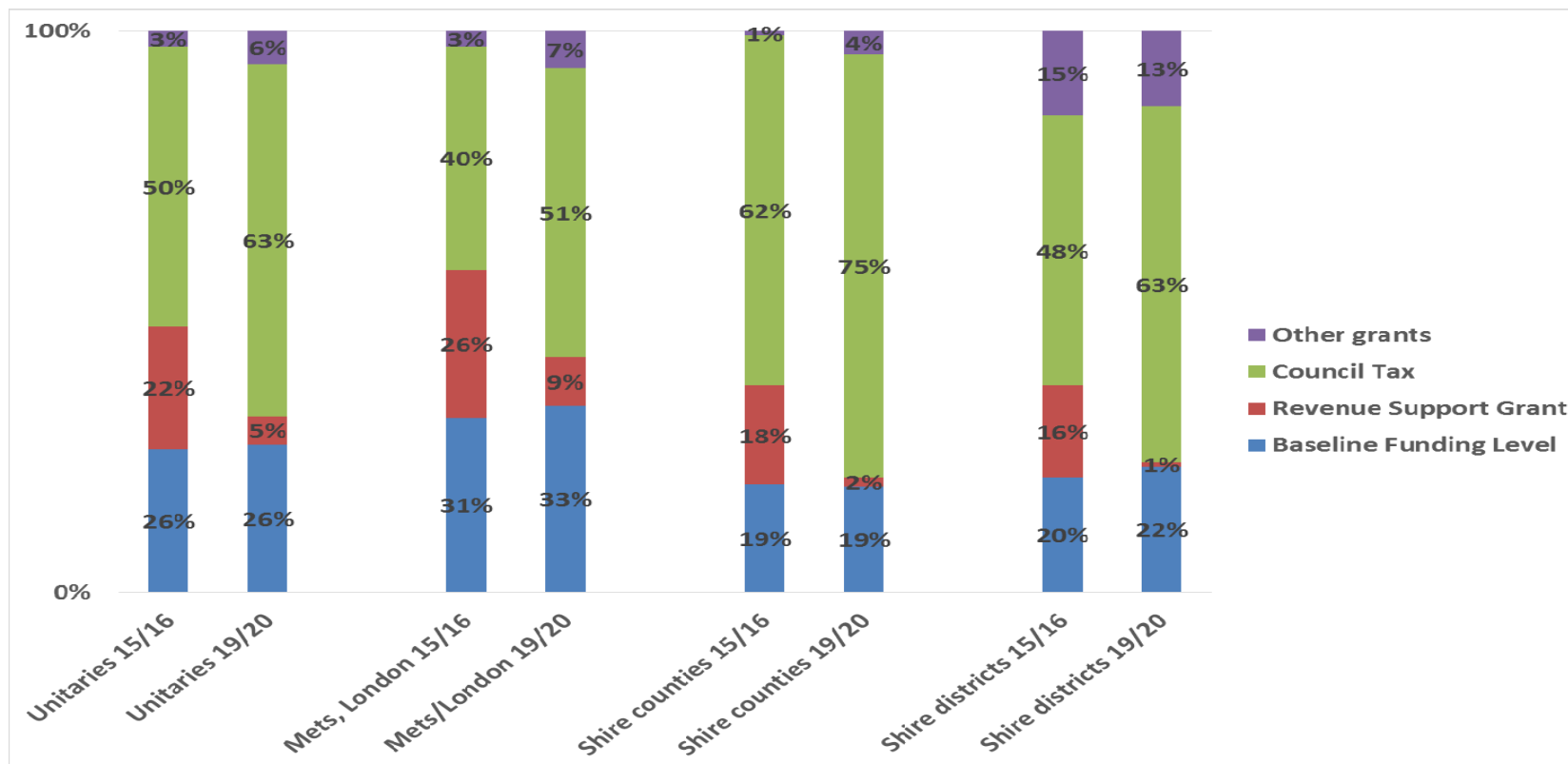


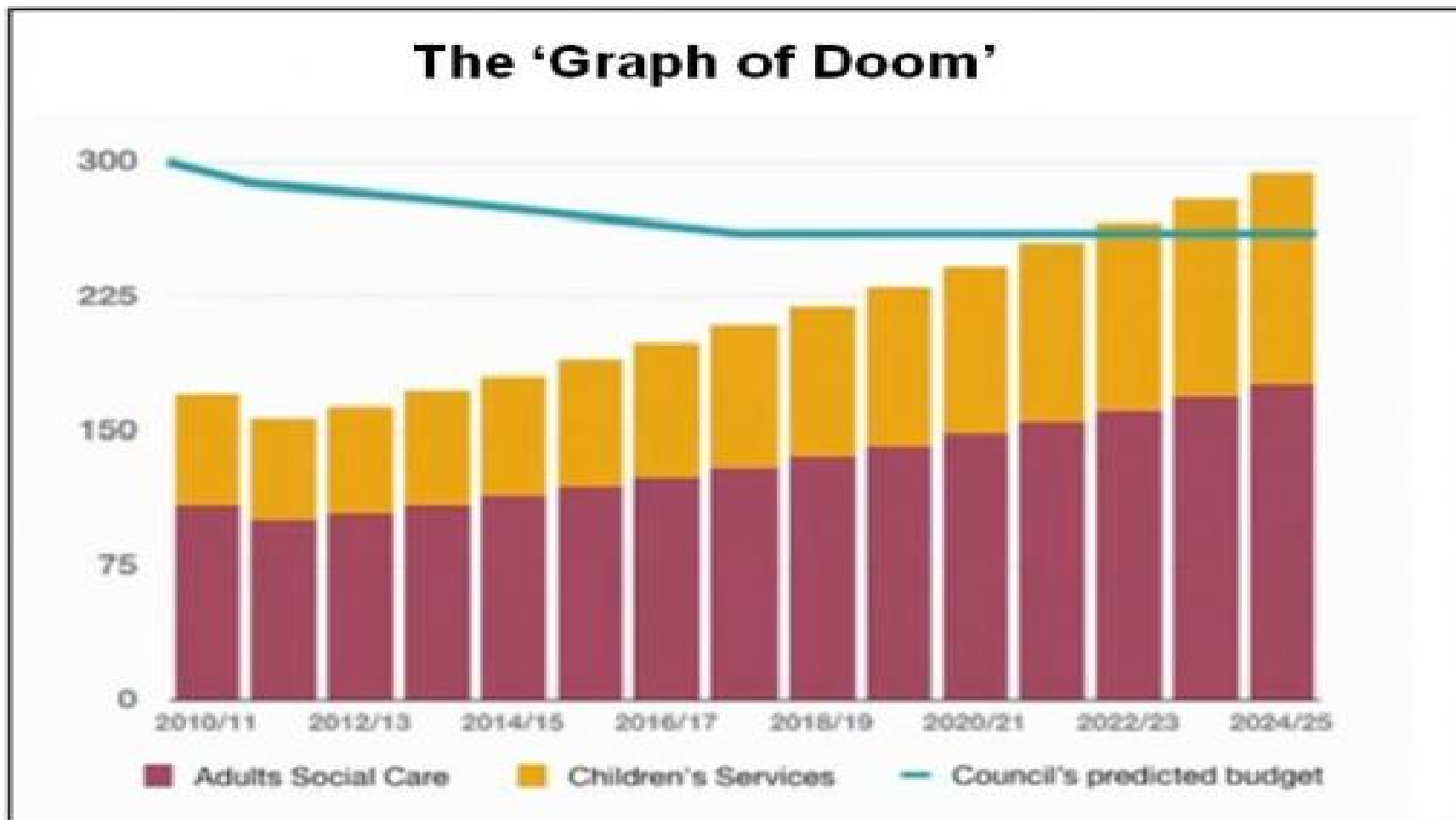
# UK local government spending as a share of GDP: current spending, already below the 1979-2014 minimum, is projected to go on falling to 2020





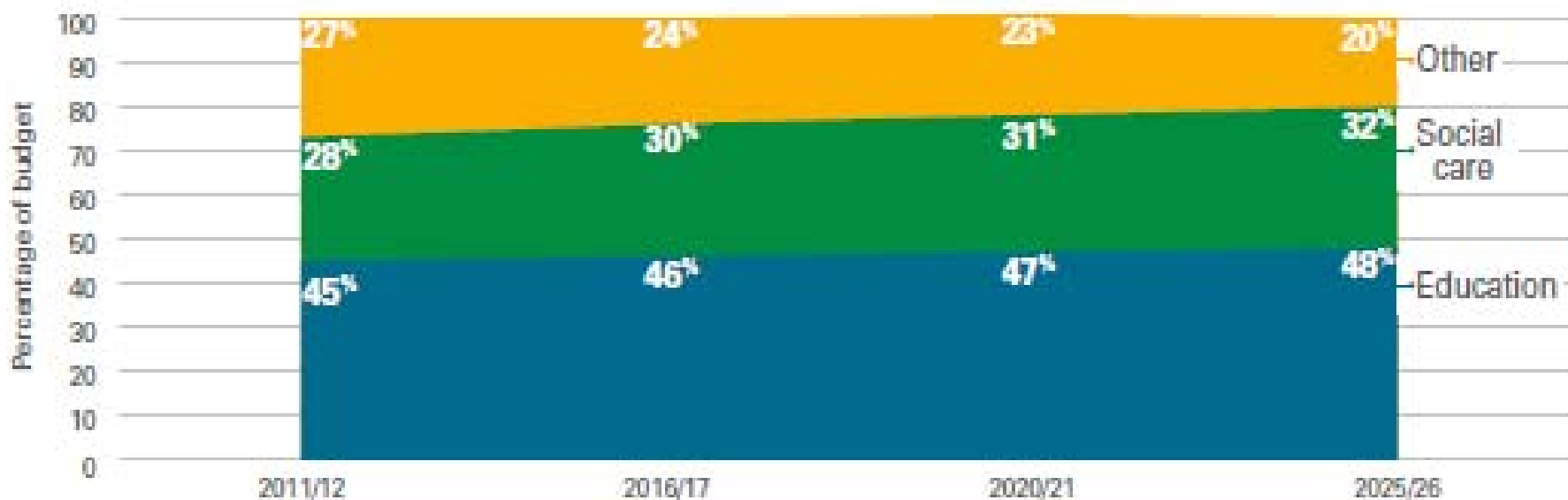
## Balance of core spending power 15/16 and 19/20: as RSG shrivels beyond London and the Mets, most LA funding will come from council tax







# The Graph of McDoom



Note: Calculations are based on cash terms.

Source: [Scottish Local Government Finance Statistics 2016/17](#)  Audit Scotland, November 2016





# What has happened to roads, highways and street lighting?

- Neighbourhood grouping
- Total service expenditure % 's in UK
- Average cuts v's areas of deprivation
- Roads and transportation £7.4B
- Average cut 21% to 30%
- Wales phenomenon
- APSE state of the market



# State of the market

- **Highways**

- Finance
- 17/18 to 18/19
- 45% drop
- 62%, < 5% drop

- **Street Lighting**

- Finance
- 17/18 to 18/19
- 43% drop
- 45%, < 5% drop

- **Winter Maintenance**

- Finance
- 17/18 to 18/19
- 25% drop
- 53%, < 5% drop





## State of the market

- **Highways**
- Staffing
- Absence 55% acceptable
- Apprentices 70% run
- Training 26% drop
- Age 48
- **Street Lighting**
- Staffing
- Absence 77% acceptable
- Apprentices 34% run
- Training 24% drop
- Age 48
- **Winter Maintenance**
- Staffing
- Not separated from main Highways figures



## State of the market

- 66% 2 years to reach acceptable standard
- Target time to restore street lights
- Claims increasing
- Energy saving initiatives
- Salt supplies
- 81% overspent budget as result of beast



Association for Public Service Excellence

**Has Austerity bitten?**

**What the public think**

[www.apse.org.uk](http://www.apse.org.uk)



## Key fact : Relative trust remains high

**As in 2016 and 2017, Trust in Councils and Councillors is high relative to Government ministers and private companies in a climate on increasing distrust of anyone.**

- Four times as many still trust the local Council over the Government to make decisions about how services are delivered provided in your local area.
- Six times as many trust local Councillors over Government ministers to make decision about their local area.
- Four and half times as many trusted Council to provide services in their local area over a private company with people trusting the council five times more than the Government.

80% would like the Government to give more money to local councils to spend at the local level for services that are in their neighbourhood.

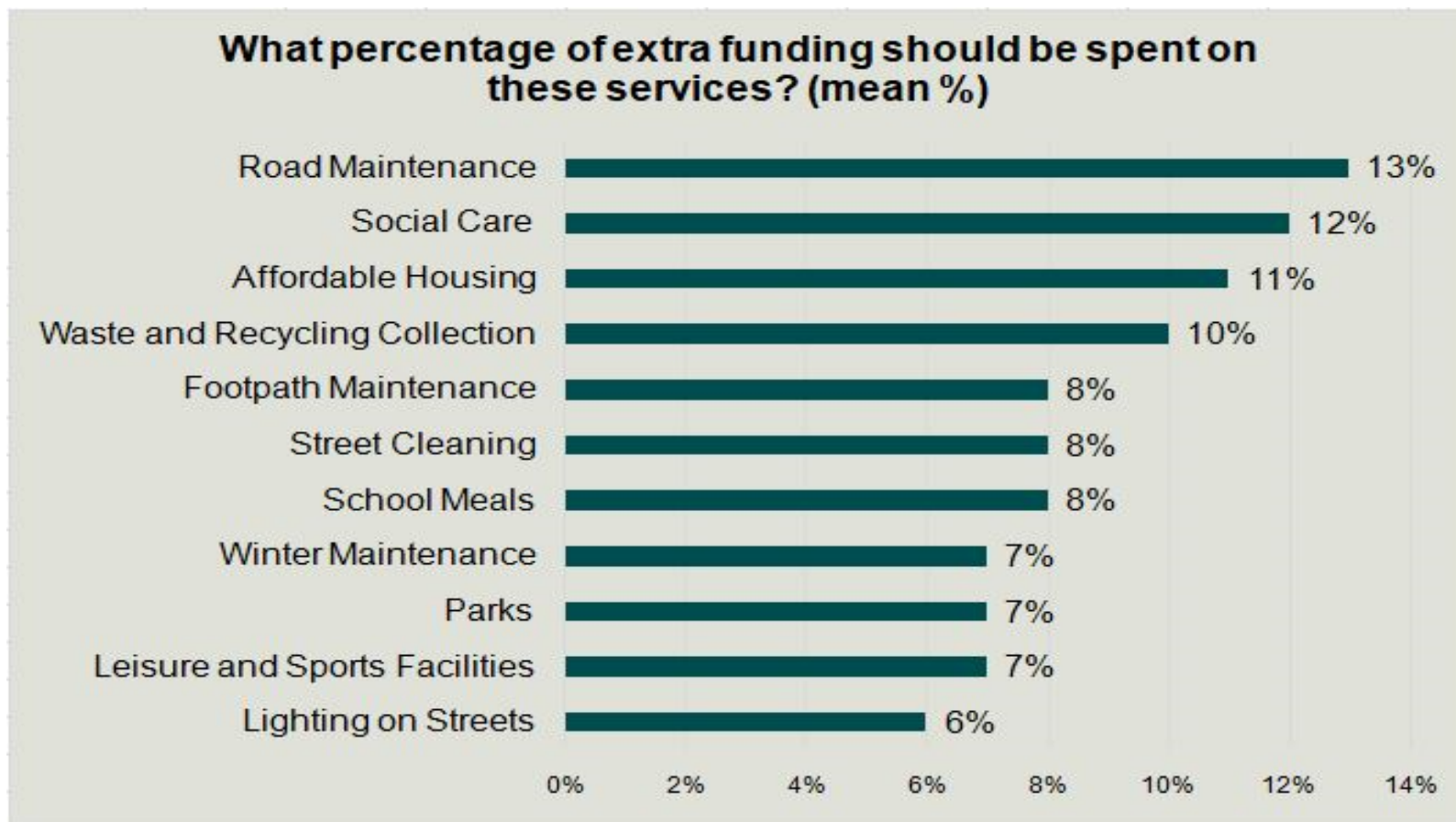


## Performance of Councils services positive





## How the public would like extra funds spent



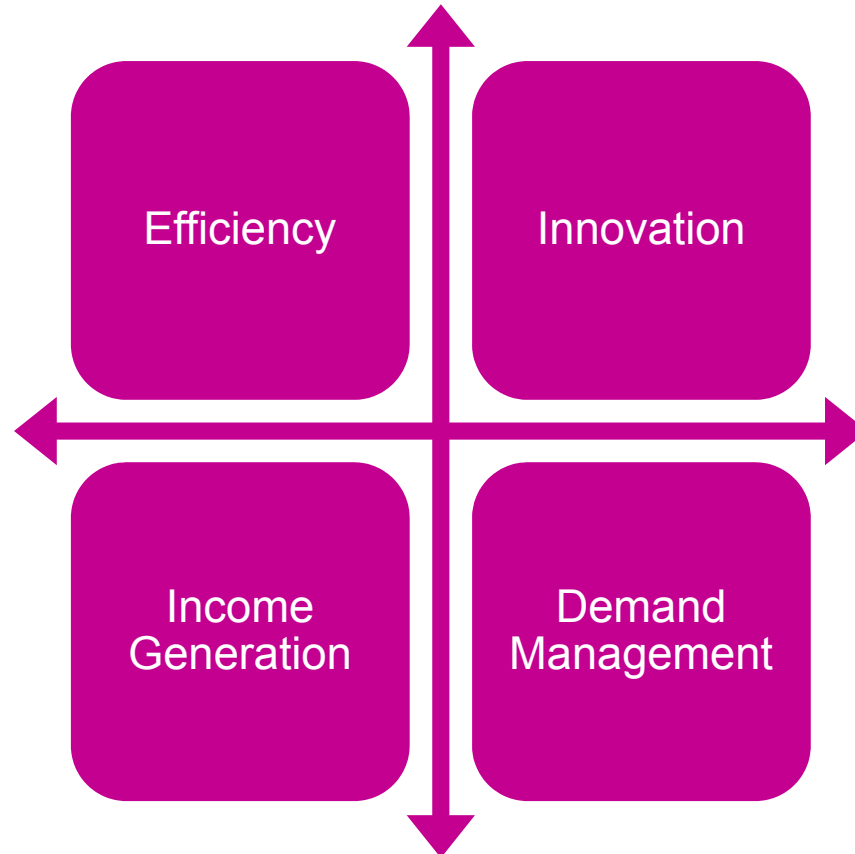


# What will local government look like in 2020?





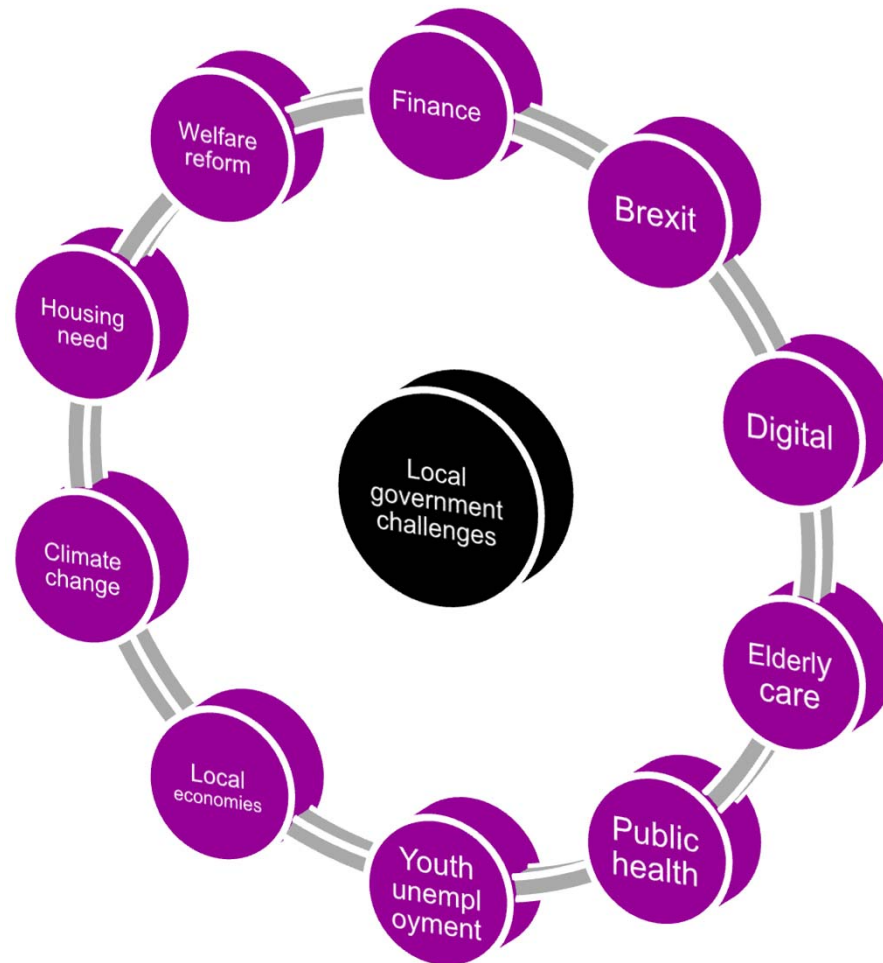
# The pillars of excellence





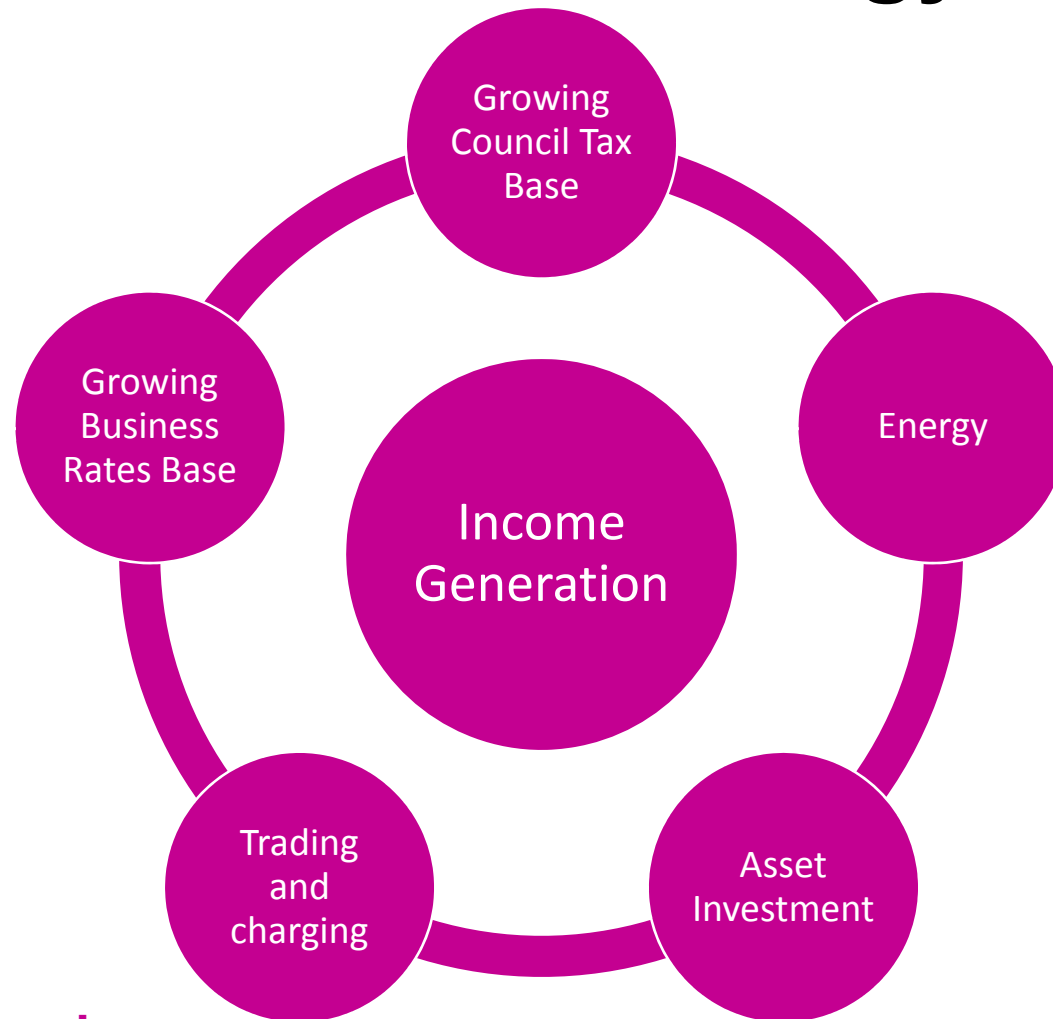


# Public policy challenges





# Commercialisation strategy





## State of the market

- **Highways**
- Income
- Sell services  
62% do, 15% expect soon
- 87% Directly
- **Street Lighting**
- Income
- Sell services  
56% do, 17% expect soon
- **Winter Maintenance**
- Income
- Sell services  
40% do, 18% expect soon



# Conclusions

- Budgets continuing to drop up to and beyond 2020
- Sector response been good in terms of cost reduction, efficiency and improving productivity
- Public **currently** supportive of council roads services
- This only takes us so far
- We now need to continue to seek out income generation opportunities to offset budget cuts
- Need for a commercialisation strategy
- Time for a spirit of municipal entrepreneurialism
- Need to fight for funding in CSR

# **NEW MUNICIPALISM**

Delivering for local people and local economies



Association for Public Service Excellence

# Contact details

**Paul O'Brien, Chief Executive**

**Email: [po'brien@apse.org.uk](mailto:po'brien@apse.org.uk)**

**[@apsetweets](#)**



**GB 11409**



**GB 11132**



**GB 14074**

**Association for Public Service Excellence**

3rd floor, Trafford House, Chester Road,  
Old Trafford, Manchester M32 0RS.

**telephone: 0161 772 1810**

**web: [www.apse.org.uk](http://www.apse.org.uk)**