



# Delivering Insourcing an approach to New Municipalism

Paul O'Brien,  
Chief Executive, APSE

**Slide 1**

---

**WP1**

Wayne Priestley, 12/03/2018

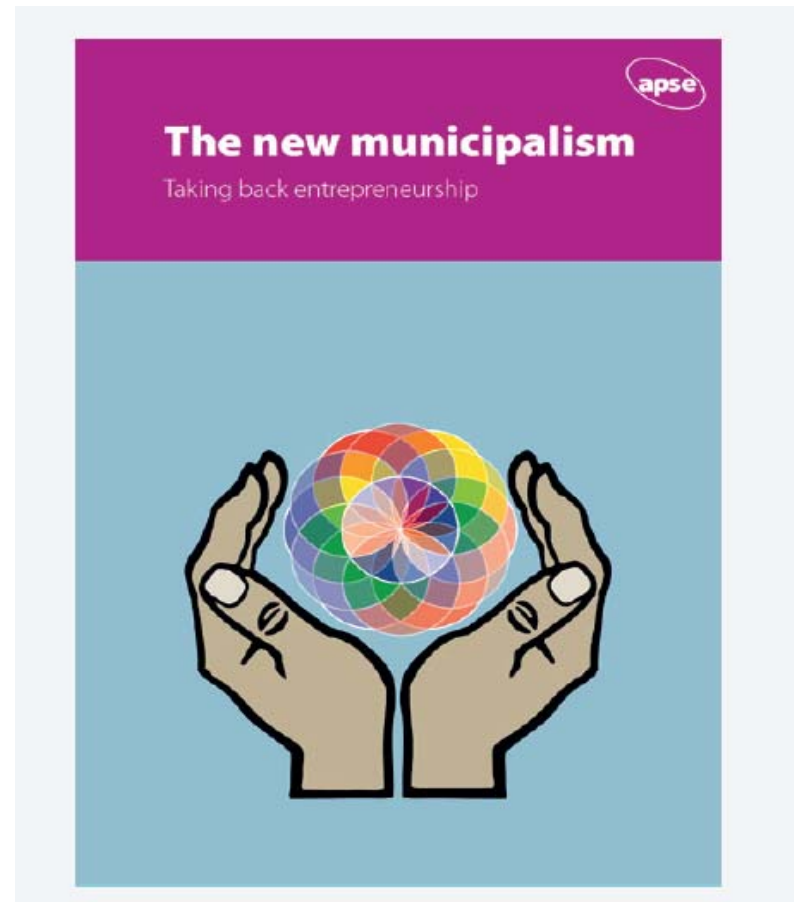


## Defining a new municipalism

- Permanent austerity?
- Local finance base
- Multiple public policy crisis
- Matching solutions with funding sources
- Building community wealth
- Municipal entrepreneurship
- Insourcing
- Stimulating local economy and community



**Association for Public Service Excellence**



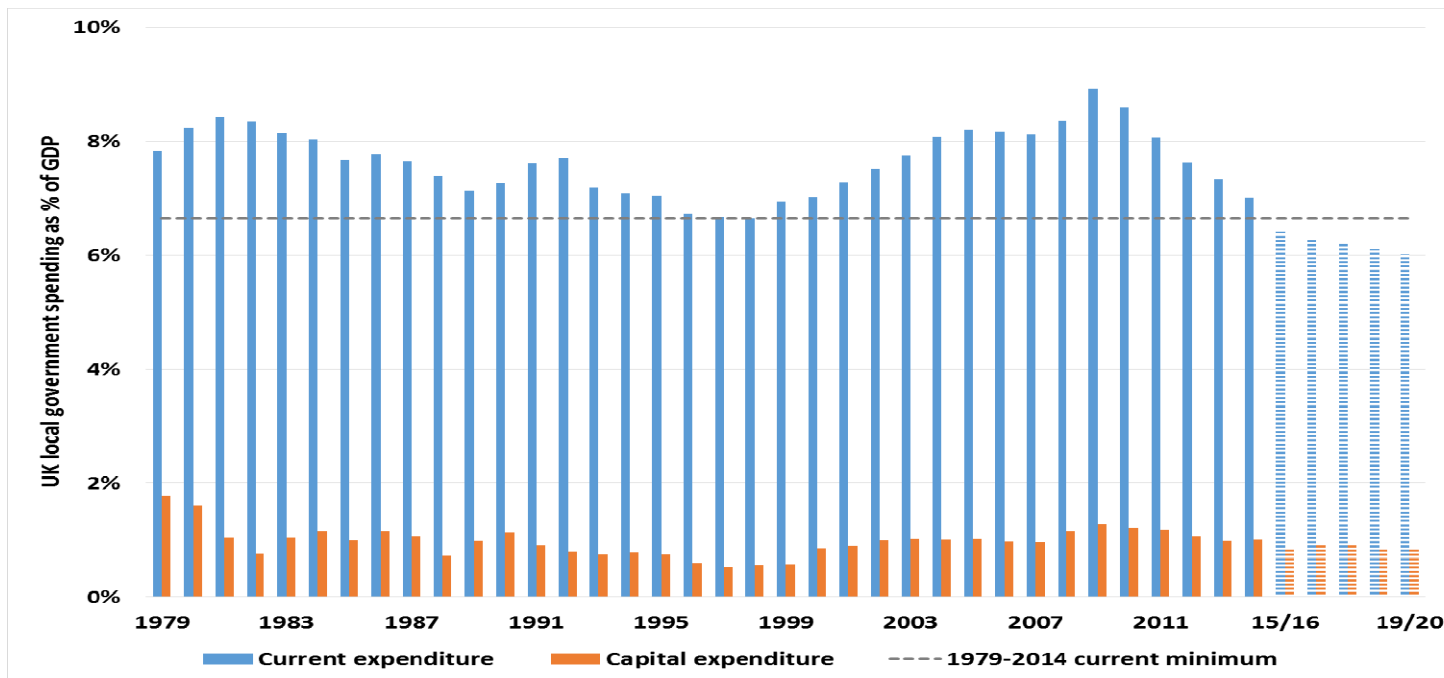
[www.apse.org.uk](http://www.apse.org.uk)



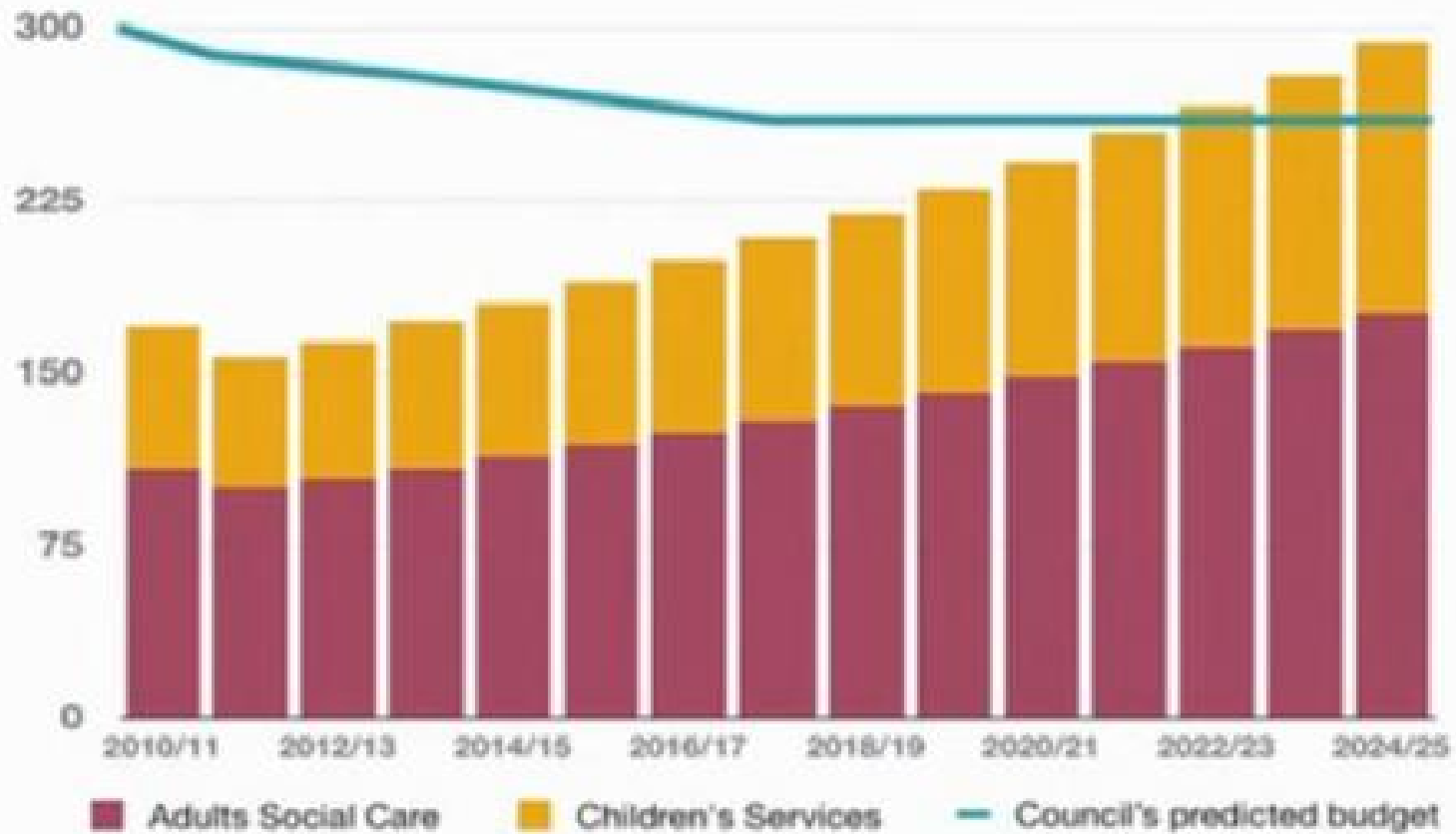
**Association for Public Service Excellence**

# Outsourcing: the UK local government experience

UK local government spending as a share of GDP:  
 current spending, already below the 1979-2014  
 minimum, is projected to go on falling to 2020



## The 'Graph of Doom'

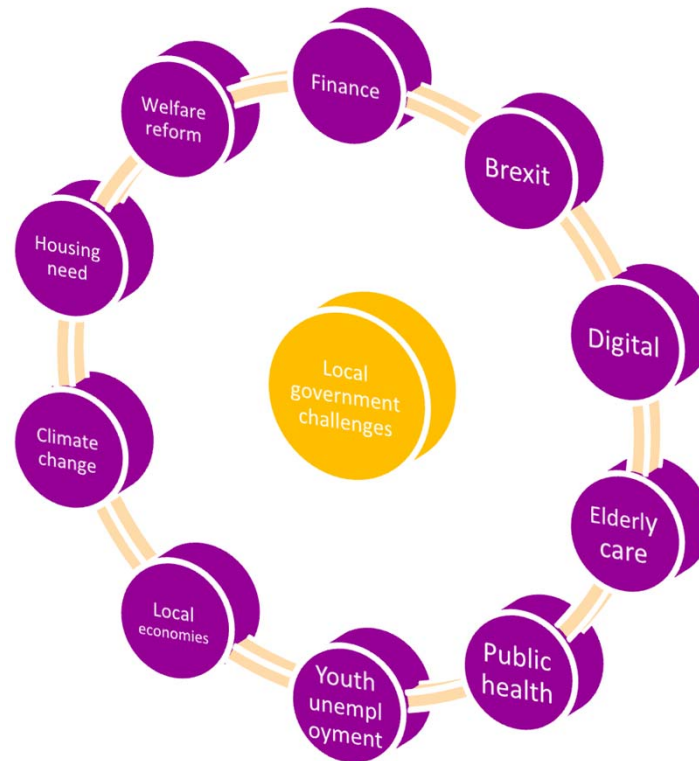


## Performance of Councils services positive



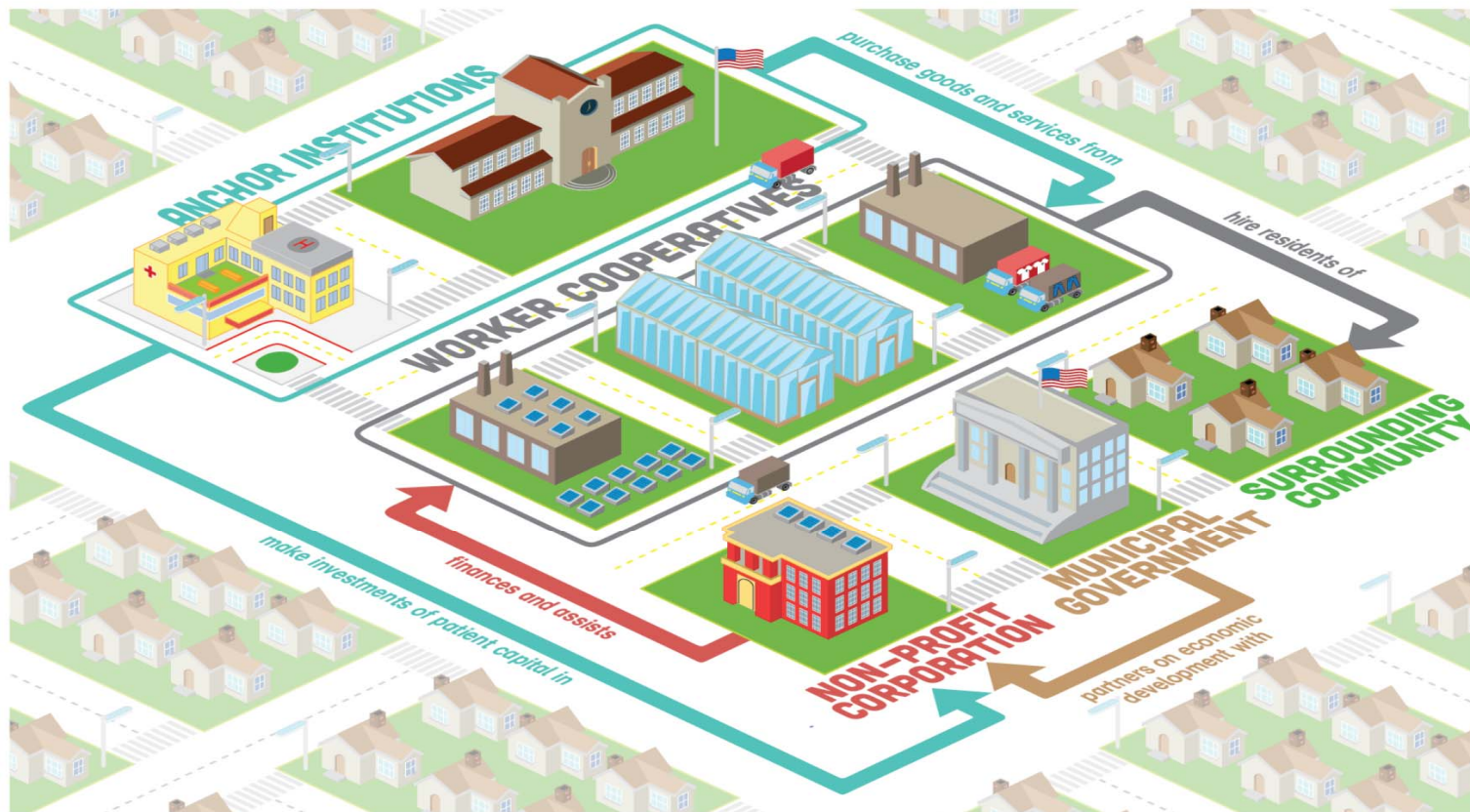


# Public policy challenges

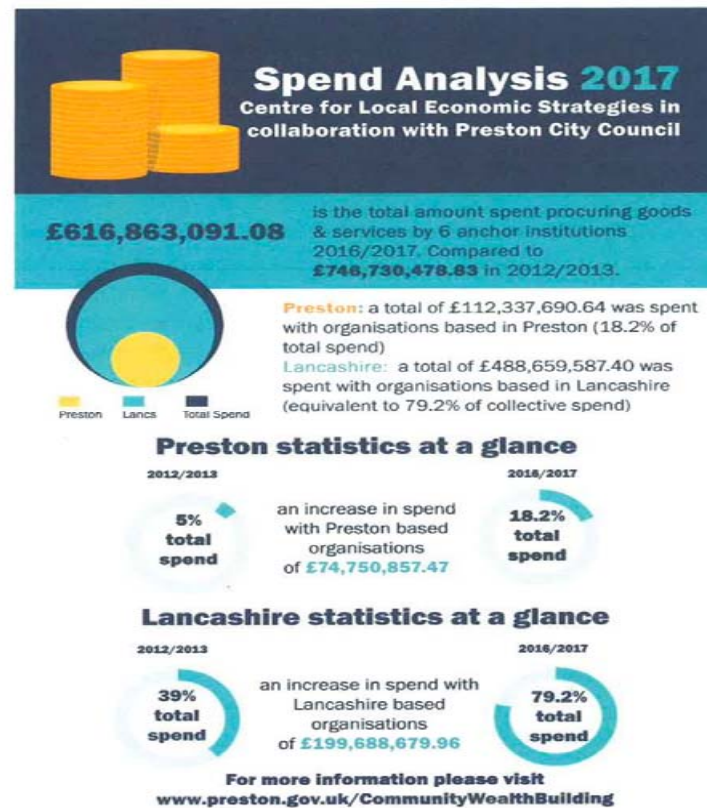


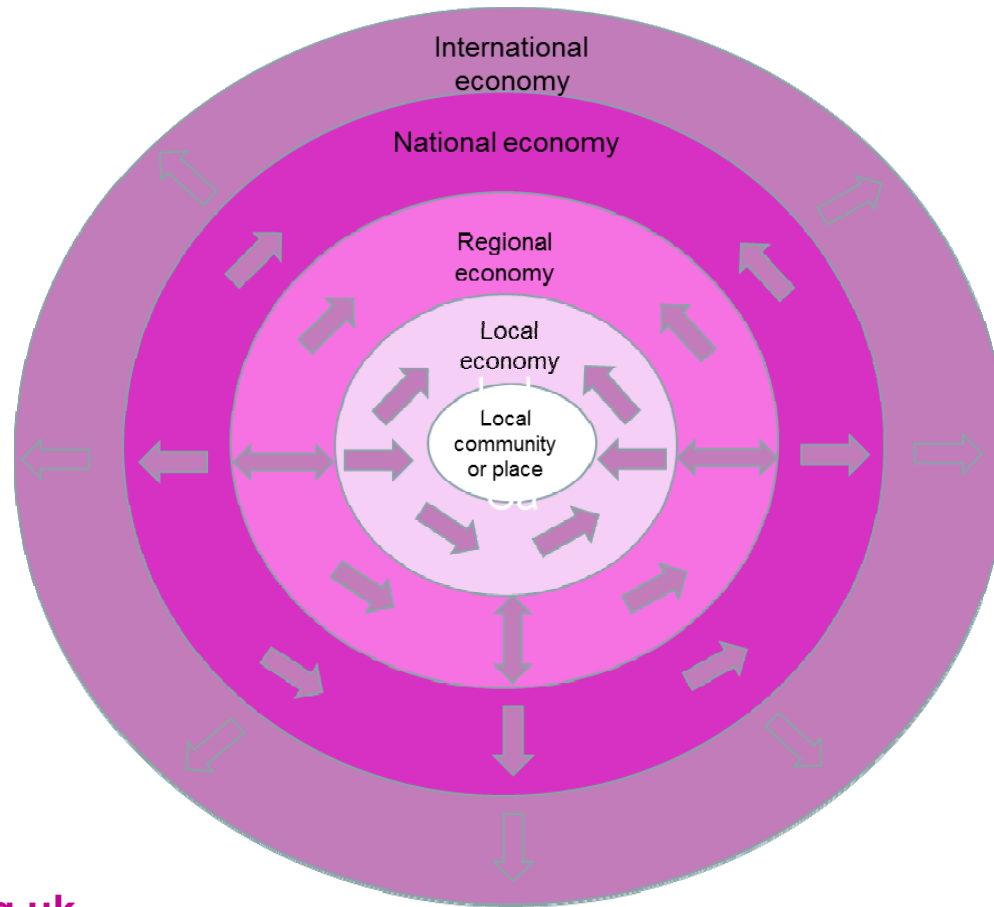


### The Cleveland Model

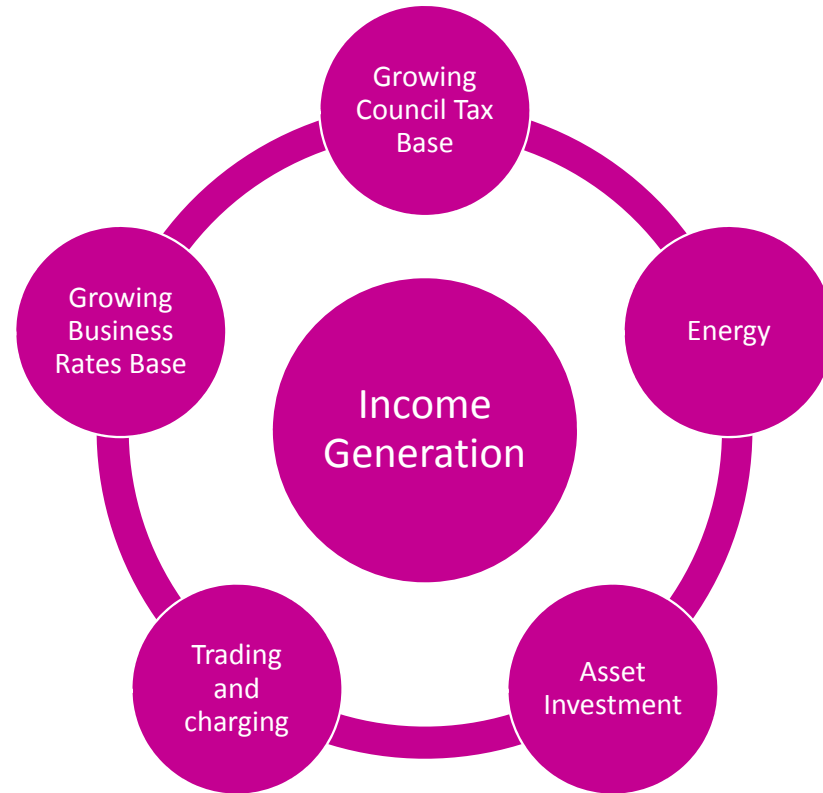


# Preston





# Commercialisation strategy



# Income generation



80% intend to increase fees & charges over next 2-3 years

- Sports pitch lettings (91%)
- Allotments (70%)
- Festivals/concerts/events (68%)
- Cafes in parks (66%)
- Bowling greens (64%)
- Ice cream vans/mobile caterers (60%)
- Fairgrounds (58%)
- Renting buildings and land (49%)
- Sponsorship (43%)
- Tennis courts (42%)
- Boot camps (32%)
- Mini golf (28%)
- Golf course green fees (26%)
- Sale of land (26%)



56% indicated that they have income generation schemes

- Selling recycling materials (97%)
- Renewable energy (9%)
- Anaerobic digester (6%)
- Solid fuel recovery (3%)



43% answered that they have income generation schemes

- Property clearance
- Private sector cleansing
- Cleansing for developers
- Sponsorship & advertising
- Events e.g. sporting events
- Care of garden charging
- Other in-house sections e.g. parks
- Services to parish councils
- Other public services e.g. NHS

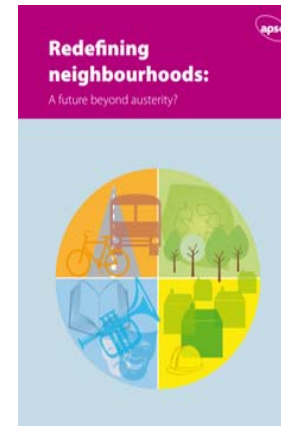
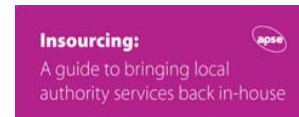
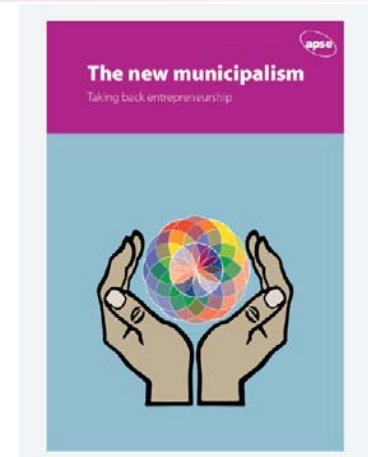
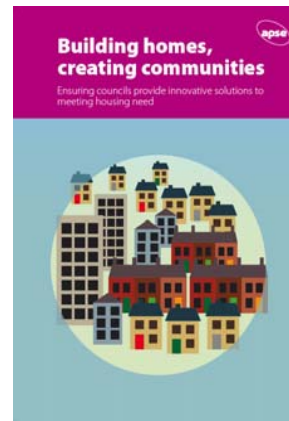
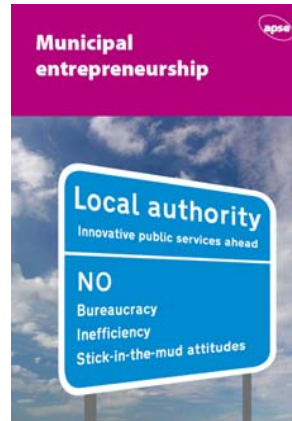


50% currently sell their services outside of the local authority and over 20% considering it as an option

- Taxi testing (53%)
- MOT services (60%)
- Commercial body shop facility (11%)
- Authorised testing facility for VOSA testing (19%)
- Driver training (72%)
- CPC approved training provider (26%)



# Association for Public Service Excellence





# Conclusions

- A new municipalism emerging
- Significant financial and policy drivers
- Need to build community wealth and resilience
- Need for a spirit of municipal entrepreneurship
- Need to control own destiny
- Insourcing can play a key part in this





**Association for Public Service Excellence**

# **NEW MUNICIPALISM**

Delivering for local people and local economies

[www.apse.org.uk](http://www.apse.org.uk)



Association for Public Service Excellence

# Contact details

**Paul O'Brien, Chief Executive**

**Email: [po'brien@apse.org.uk](mailto:po'brien@apse.org.uk)**

**[@apsetweets](#)**



GB 11409



GB 11132



GB 14074

**Association for Public Service Excellence**

3rd floor, Trafford House, Chester Road,  
Old Trafford, Manchester M32 0RS.

**telephone:** 0161 772 1810

**web:** [www.apse.org.uk](http://www.apse.org.uk)