

# APSE Cemeteries & Crematoria Seminar

Hinckley – 20 April 2017



**Bereavement Services,  
Planning the Future**  
*Developing A New Cemetery –  
Plain Sailing or Stormy Waters*

**Paul Wright & Tom Banks**



**Birthplace of Chemical Industry**

**Situated on River Mersey**

**Main towns Widnes & Runcorn**

**Villages of Hale, Daresbury, Moore  
and Preston Brook**

**123,000 population**

**Unitary Council since 1998**

# Mersey Gateway Bridge

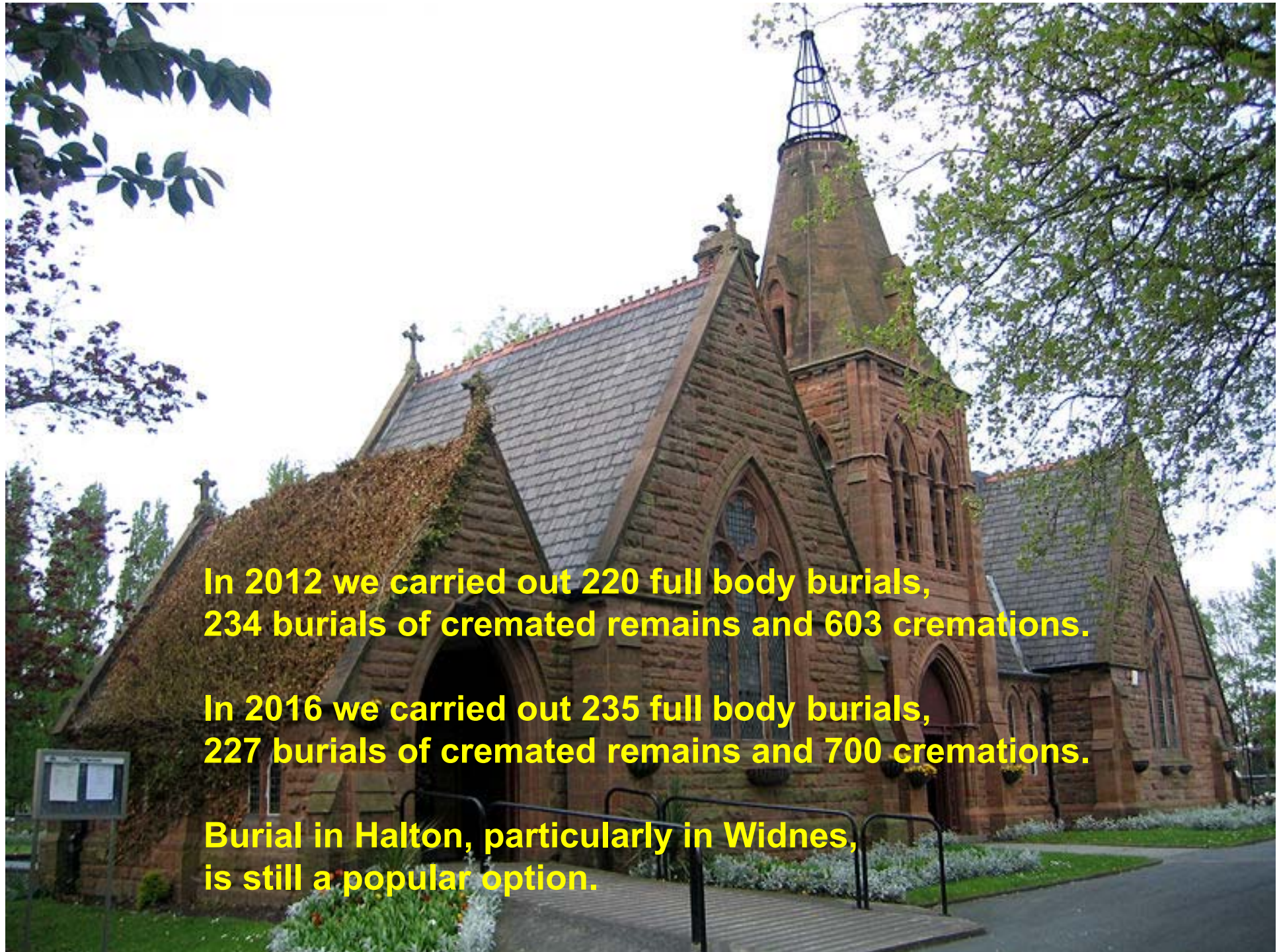
- 
- Largest engineering project outside London
  - Largest local authority project in the UK
  - Due to open Autumn 2017

# Halton's Cemeteries



**Currently we have three cemeteries and one crematorium.**

Halton Cemetery:	opened late C19th
Runcorn Cemetery:	opened 1869
Widnes Cemetery:	opened 1898
Widnes Crematorium:	opened 1958



**In 2012 we carried out 220 full body burials, 234 burials of cremated remains and 603 cremations.**

**In 2016 we carried out 235 full body burials, 227 burials of cremated remains and 700 cremations.**

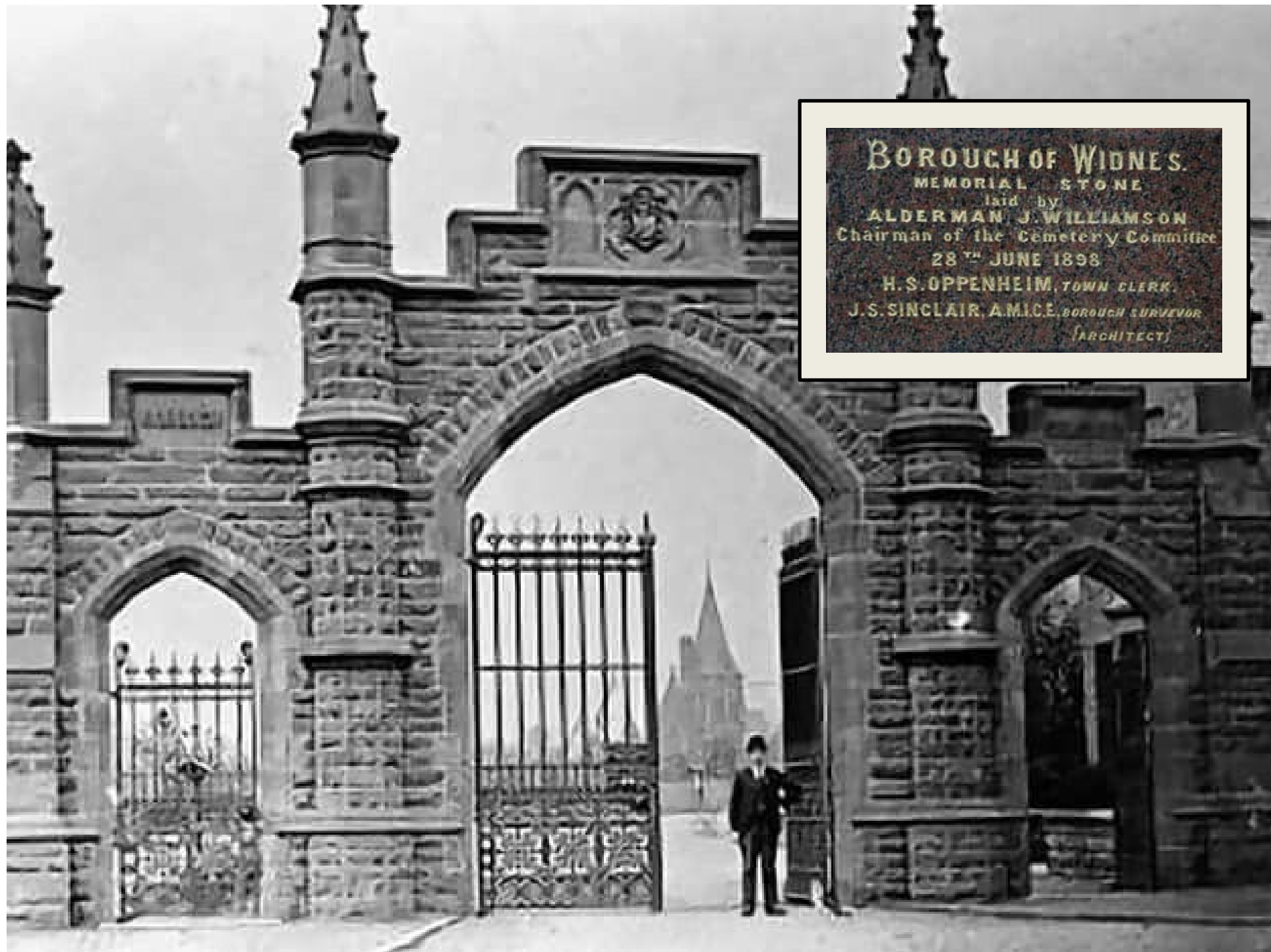
**Burial in Halton, particularly in Widnes, is still a popular option.**

# Developing a new cemetery: plain sailing or stormy waters?

- Identifying the site
- Meeting the seen and 'unforeseen' requirements
- Reaching the finishing line



# **Identifying the site**



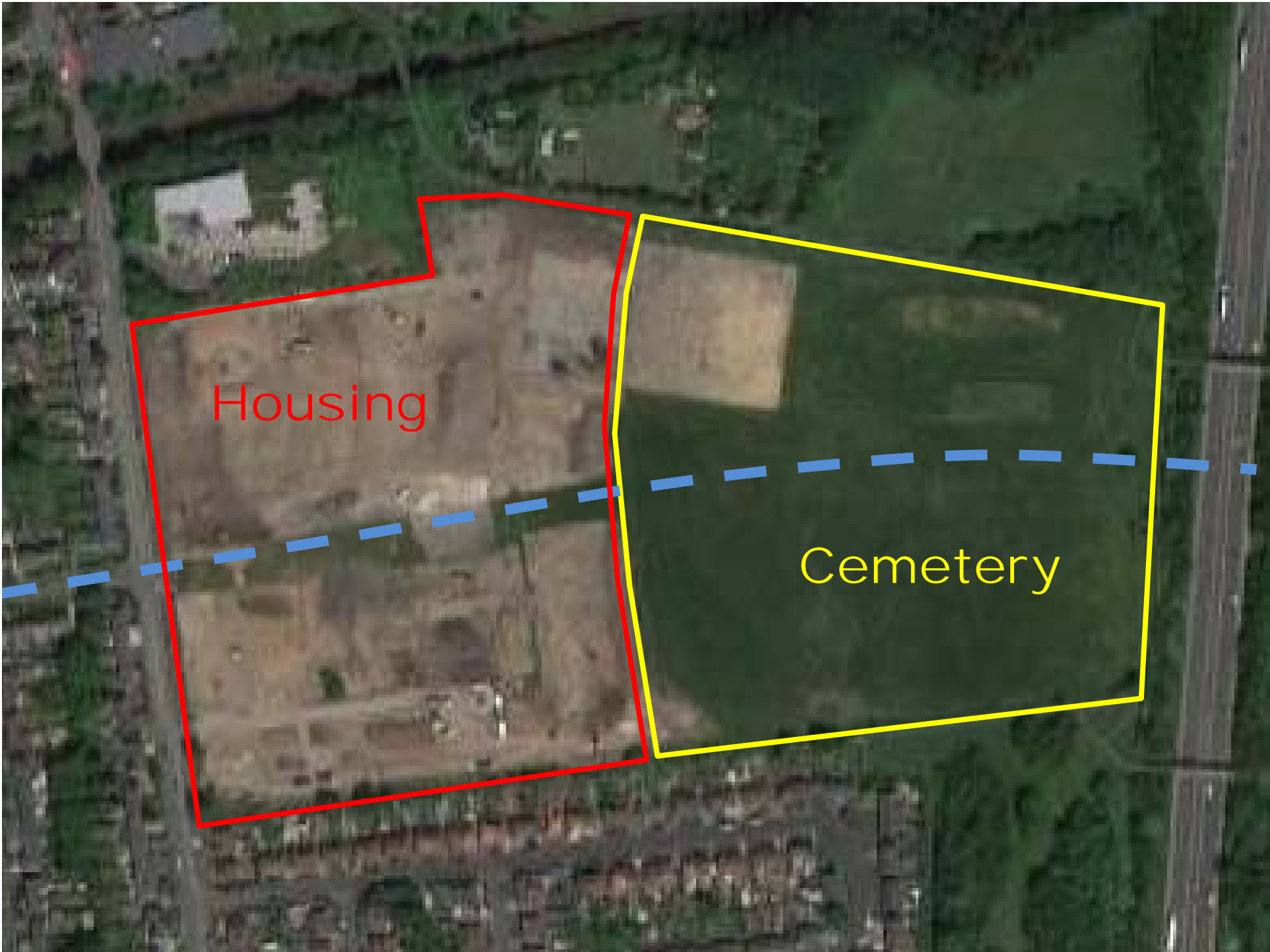
BOROUGH OF WIDNES.  
MEMORIAL STONE  
laid by  
ALDERMAN J. WILLIAMSON  
Chairman of the Cemetery Committee  
28<sup>TH</sup> JUNE 1898  
H. S. OPPENHEIM, TOWN CLERK.  
J. S. SINCLAIR, A.M.I.C.E., BOROUGH SURVEYOR  
(ARCHITECTS)







# **Meeting the seen and 'unforeseen' requirements**

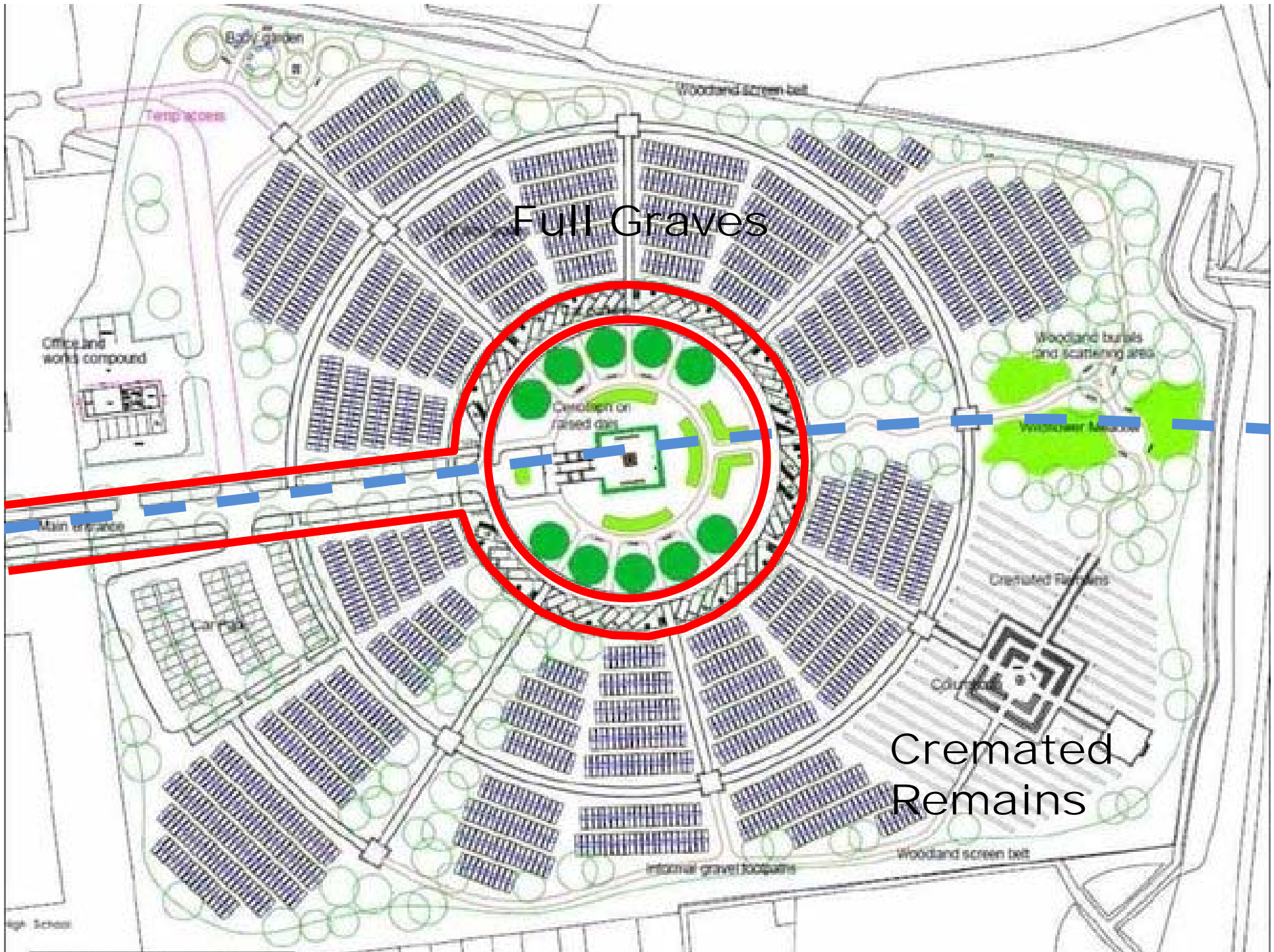


Housing

Cemetery

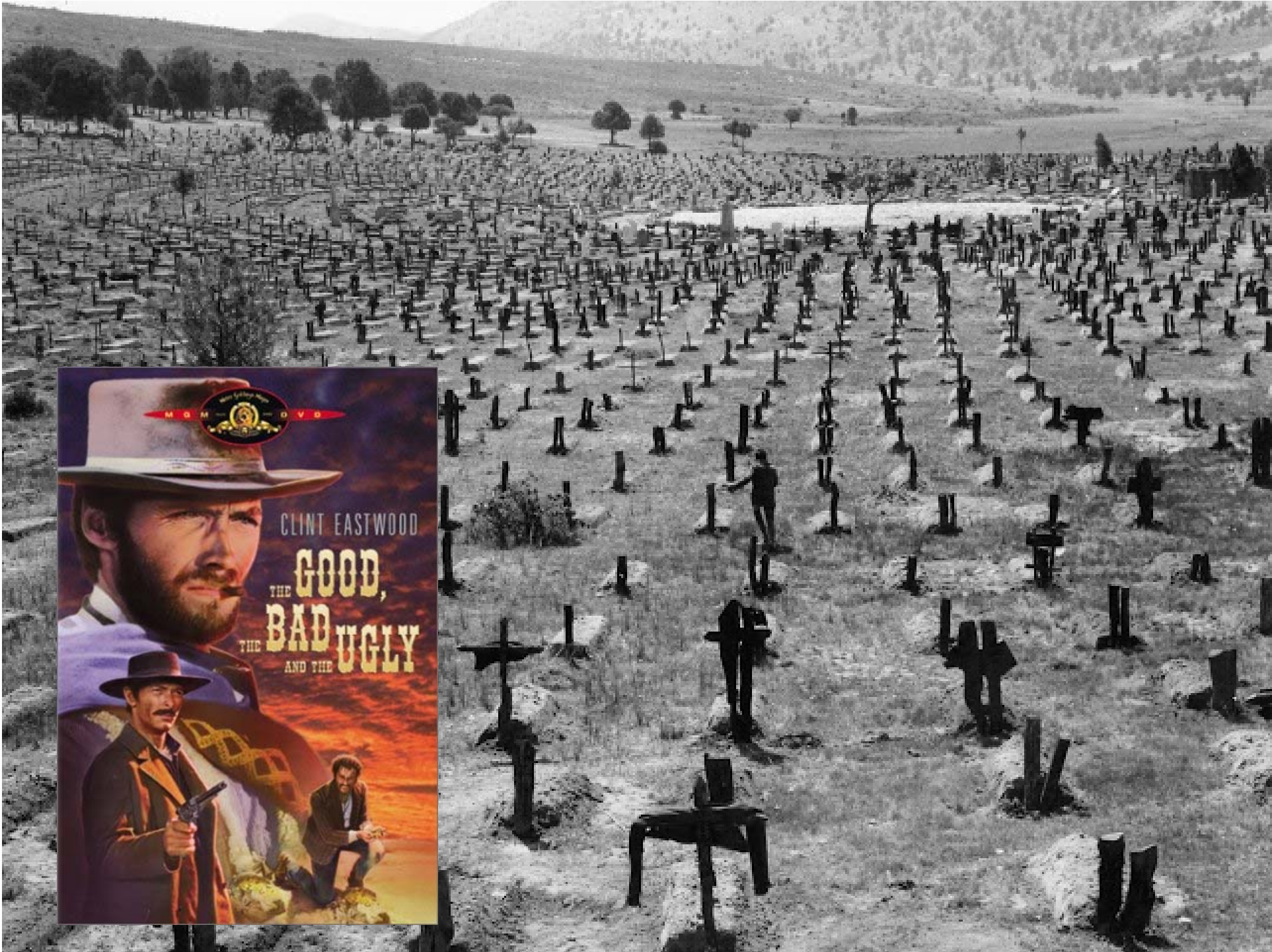


# School Standards and Framework Act 1998



Full Graves

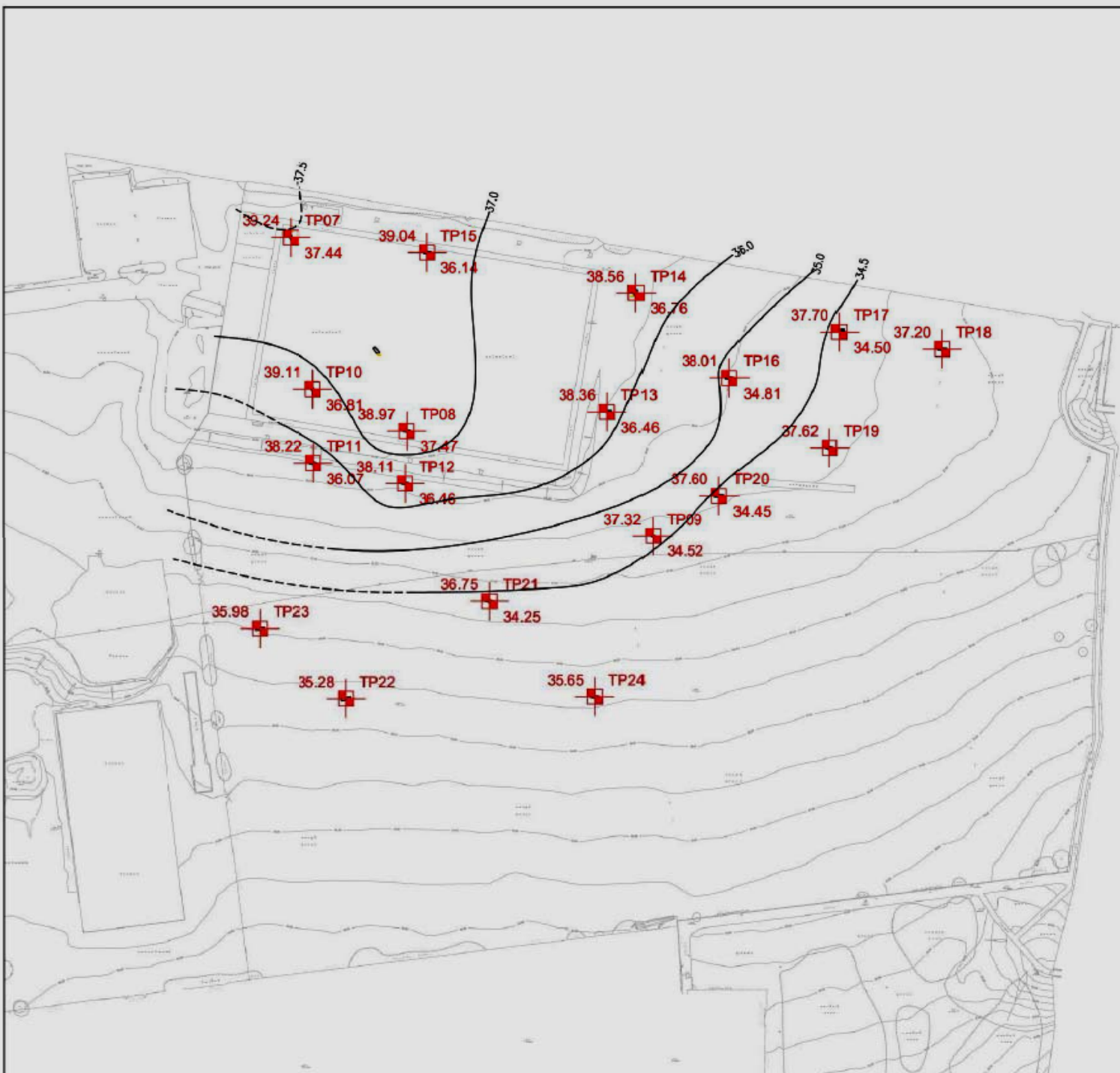
Cremated Remains



1. This drawing is to be read in accordance with the relevant Architects and Engineers specifications.
2. Do not scale this drawing. All dimensions are to be checked by the contractor at commencement of construction. Any discrepancies to be reported to the engineer.
3. All dimensions are in millimetres unless otherwise stated.

**KEY**

- Spot height
- Trial pit No
- 39.97 TP01 - Loc
- 37.14 - Rock head
- 34 - App (weir cont)



Rev.	Description:
------	--------------

Curtis Consulting Ltd.  
 10 Oxford Court, Bishoppate, Manchester.  
 t: 0161 236 2394  
 e: manchester@curtis.com  
 www.curtis.com

Structures - Civil - Environmental - Infrastructure - Transport Planning  
 Birmingham - Bristol - Cardiff - Douglas - Edinburgh - Kental - Leeds - L

Status: **INFORMATION**

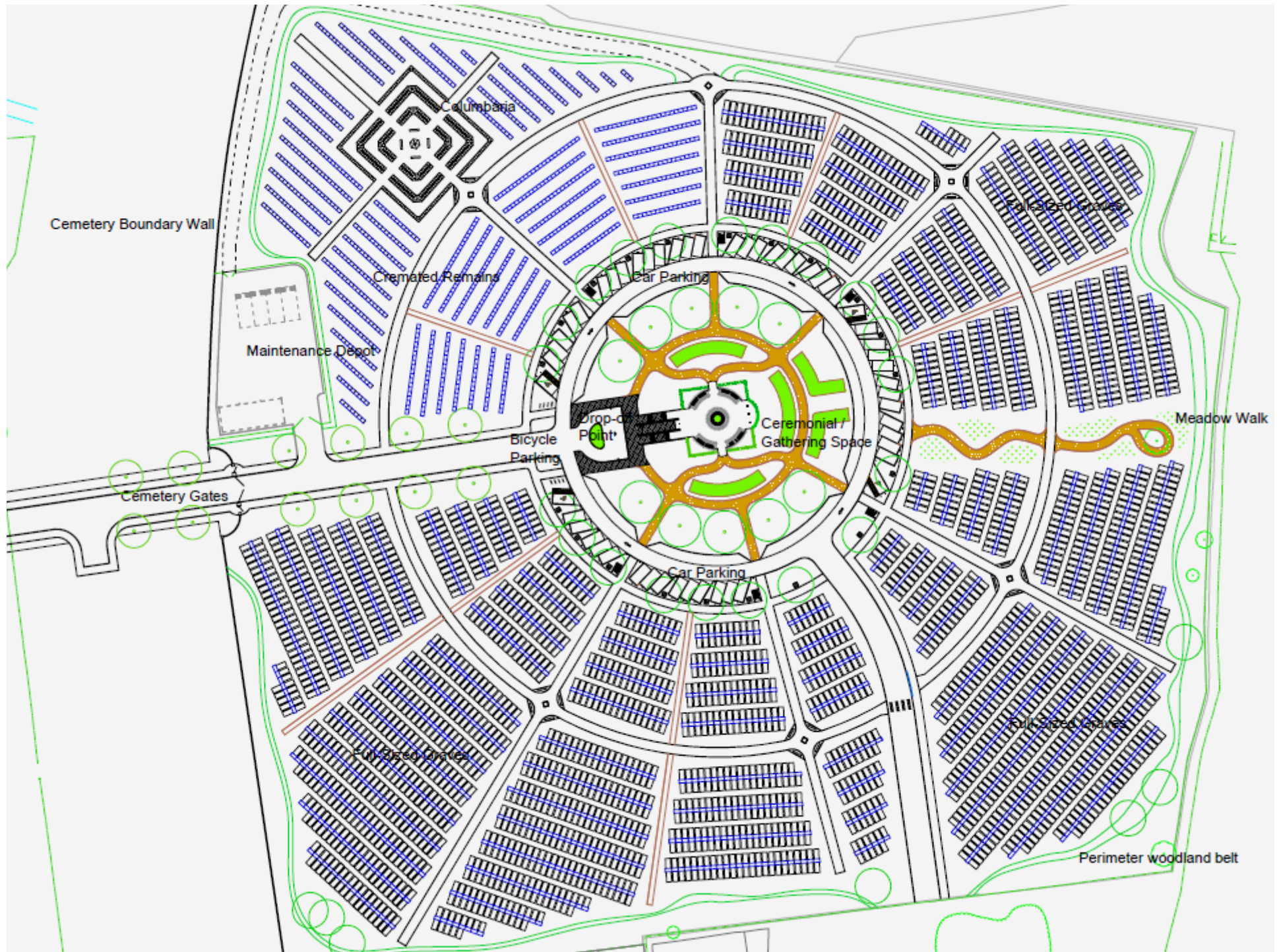
Project: **PEELHOUSE L  
WIDNES**

Dwg Title: **APPROXIMATE RO  
LEVELS**

Scale: NTS	Size: A3	First Issue: 16/09/2014
---------------	-------------	----------------------------

Dwg No: **EB1334/L004**





Cemetery Boundary Wall

Columbaria

Cremated Remains

Car Parking

Maintenance Depot

Drop-off Point

Ceremonial / Gathering Space

Bicycle Parking

Meadow Walk

Cemetery Gates

Car Parking

Full-sized graves

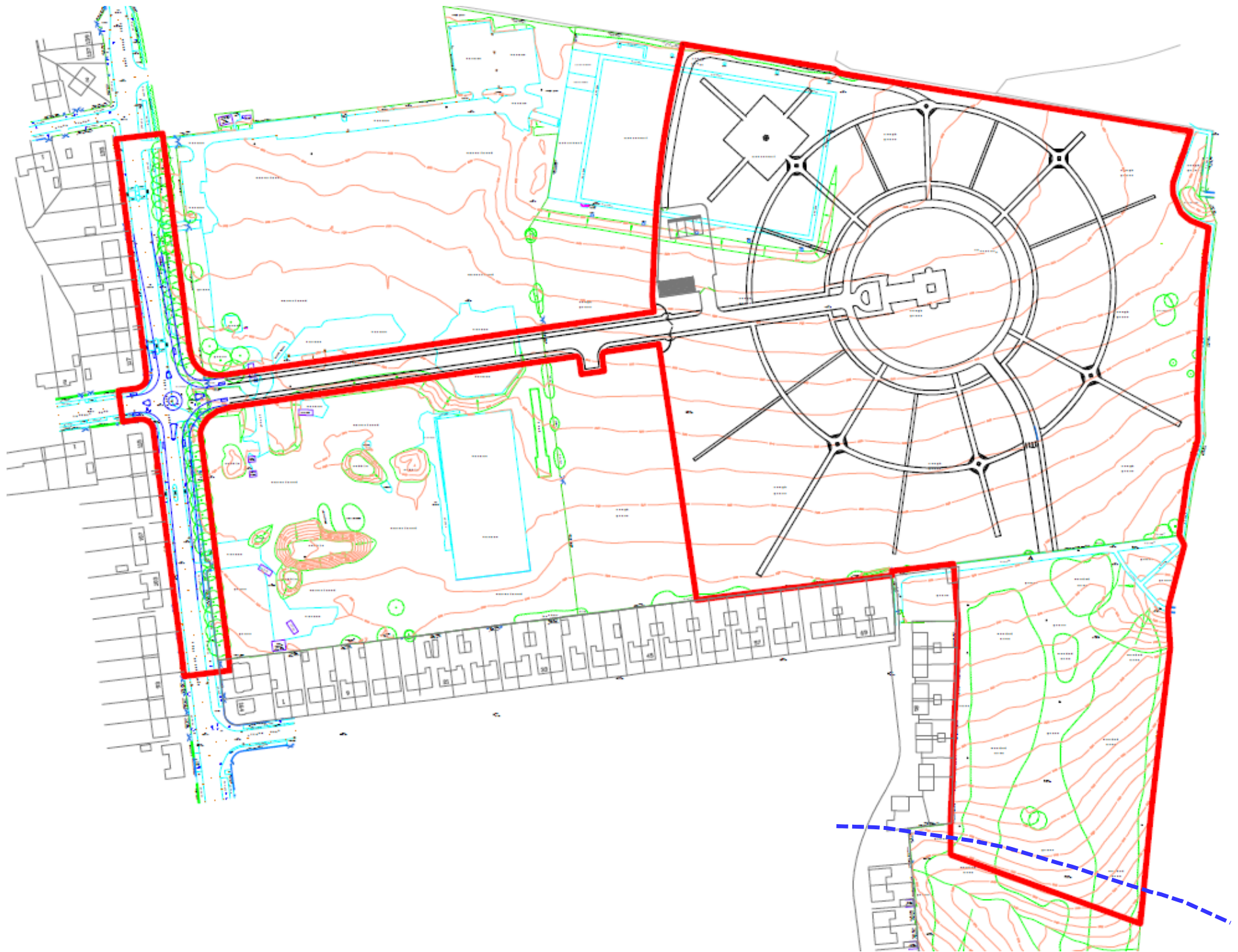
Full-sized graves

Perimeter woodland belt









Objection!



Comment





**NOTICE OF APPROVAL OF FULL PLANNING PERMISSION.**

The Town and Country Planning Act 1990.

Article 3 of the Town and Country Planning General Regulations 1992.

**APPLICATION NO:-** 14/00633/HBCFUL

**To:-** Mr Tom Banks

Halton Borough Council Picow Farm Depot Picow Farm Road Runcorn Cheshire WA7 4UB

---

**Particulars of Development:-**

Proposed construction of a new cemetery, access road and junction with Peel House Lane and associated development at

**Location:-**

Former Fairfield High School Site Peel House Lane Widnes Cheshire



## Slip Lining





New 2.0m high steel vertical bar railings:  
'Diamex' by IAE Fencing Ltd., colour: black

Columbana Garden to  
Dwg. No. L/2540/C/012

Perimeter woodland belt to  
Dwg. No. L/2540/C/010

Residential Development Site

Boundary wall to Dwg.  
No. L/2540/C/021

Concrete plinths for cremated  
remains to Dwg. No. L/2540/C/013

Car parking

Primary radial footpath

Secondary radial footpath

Avenue tree planting to  
Dwg. No. L/2540/C/010

Contemplation Garden to  
Dwg. No. L/2540/C/011

Spring bulb walk

Steel railings and  
gates across  
easement, to Dwg.  
No. L/2540/C/026

Spring bulb walk

Bicyc parking

Lay-in for  
parallel parking

# Easement

Residential Development Site

Maintenance depot to  
Dwg. No. L/2540/C/015

Access Road

Circular footpath

Access Road and associated  
drainage to connect to existing  
estate road and drains.  
See Dwg. No. L/2540/C/006

Maintenance depot

Perimeter woodland belt to  
Dwg. No. L/2540/C/010

Cemetery ground to  
Dwg. No. L/2540/C/020

Land drainage outfall to  
Bower's Brook culvert  
via SuDS in Lytham  
Road Woodlands.  
See Dwg. Nos.  
L/2540/C/006 and 007

Estate Road,  
constructed by others



# Objection!



## **Environment Agency formal position**

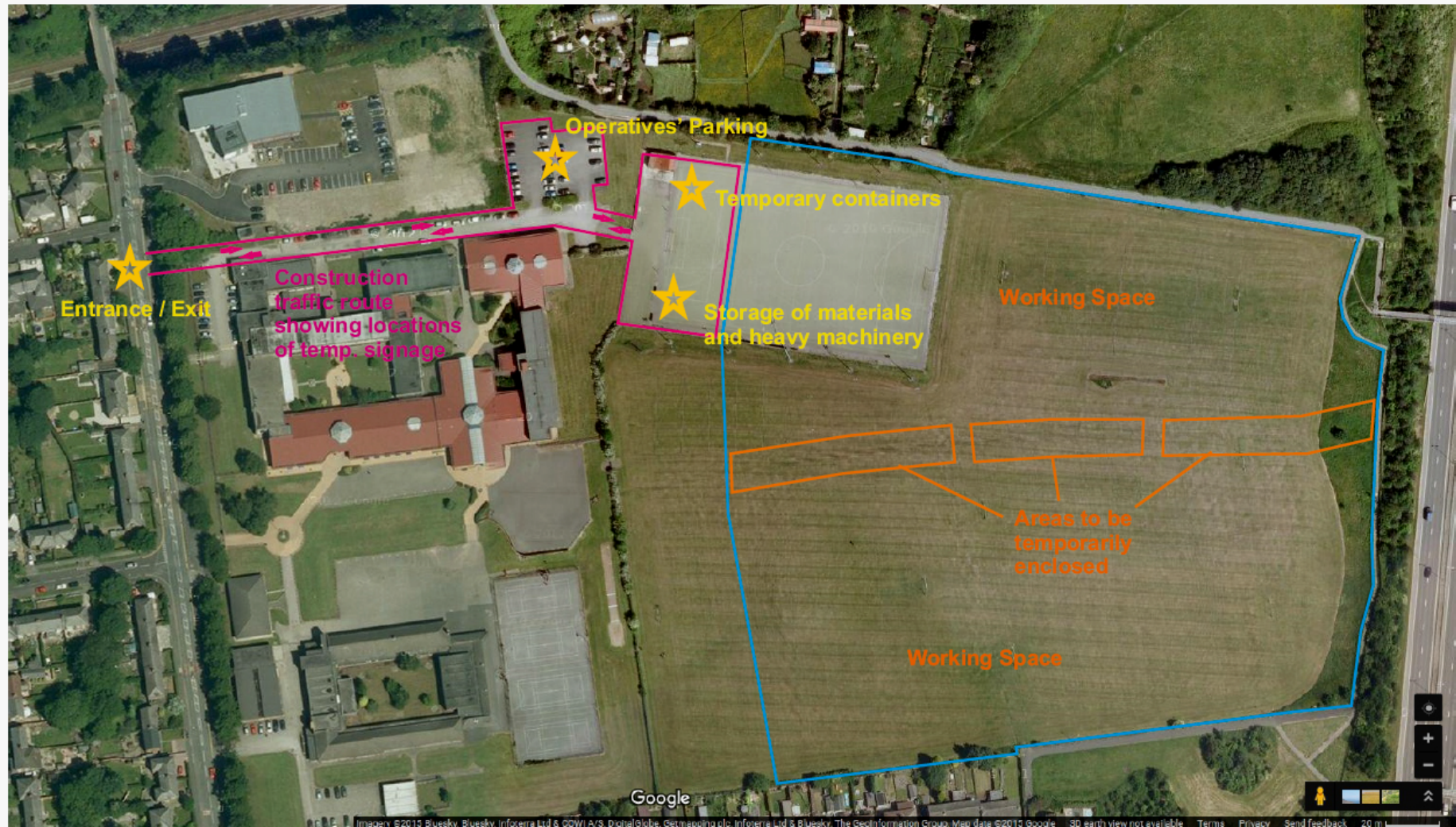
We maintain our objection to the proposed development as submitted for the following reasons;

### **Reason**

Details of the revised drainage infrastructure have not been supplied, and given the change in proposed site layout, it will be appropriate to provide a revised topographic plan of the changed proposals including ground levels and drain layout, construction details and invert levels etc

Clarification should be provided on how the proposed 'network of land drains' will be constructed so as to prevent transmission of leachates from the graves into the drainage system, and how will they prevent the localised infiltration of collected surface water into the ground near graves.

Peel House Cemetery - Earthworks Contract  
Construction Management Plan



~~£22k~~

£7,000

ESPO Framework Agreement Contract Ref 664

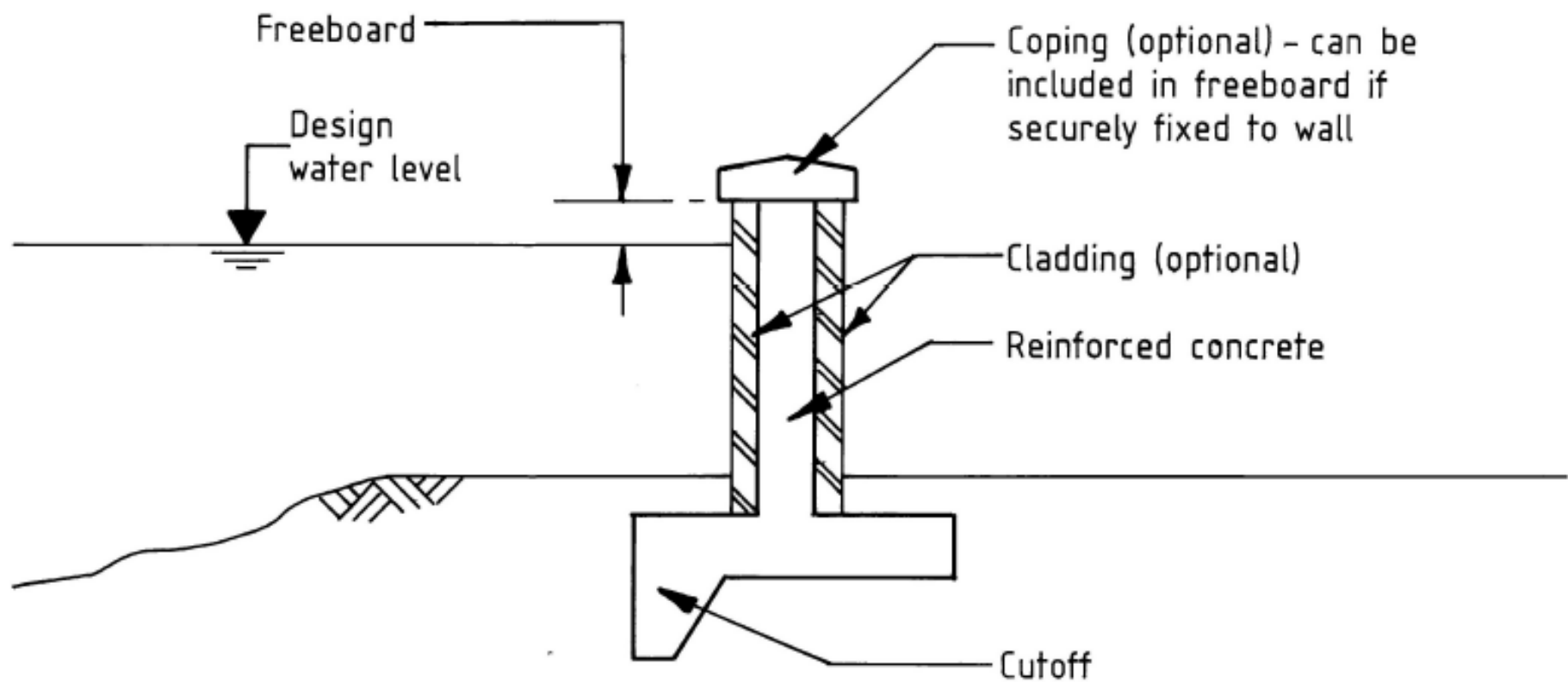


## ORDER FORM

This Order Form is issued under the framework agreement entered into between ESPO and the Consultant on 24<sup>th</sup> January 2013 ("**Framework Agreement**"). The Consultant agrees to supply the services specified below on and subject to the terms of this Contract and for the avoidance of doubt the Contract consists of the terms set out in this Order Form and the Order Terms, together with any appendices thereto.

<b>Order Number:</b>	1038108		
<b>Customer</b> (inc. address & invoice address):	Halton Borough Council, Community and Environment Department, Picow Farm Depot, Picow Farm Road, WA7 4UB	<b>Consultant</b> (name & address):	Mouchel Limited  Company Number: 01686040  Registered address: Tempsford Hall, Sandy, Bedfordshire SG19 2BD





***Figure 9.3 Typical floodwall***



2 JAN 2017

## **NOTICE OF APPROVAL OF FULL PLANNING PERMISSION.**

The Town and Country Planning Act 1990.

Article 3 of the Town and Country Planning General Regulations 1992.

**APPLICATION NO:-** 15/00553/HBCFUL

**To:-** Mr Tom Banks

Halton Borough Council Picow Farm Depot, Picow Farm Road Runcorn Cheshire WA7 4UB

---

### **Particulars of Development:-**

Proposed construction of new cemetery, access road and maintenance depot with associated infrastructure at

### **Location:-**

Former Fairfield High School Site Peel House Lane Widnes Cheshire

---

*In pursuance of their powers under the above Act, the Local Planning Authority hereby **PERMITS** the above development to be carried out in accordance with the application and accompanying plans submitted by you, subject to compliance with the condition(s) specified hereunder:-*



**Reaching the finishing line**



Highways Act 1980





**SP ENERGY  
NETWORKS**



