

# Climate Emergency – implications for leisure services

Phil Brennan



#APSEenergy

# APSE Energy

APSE Energy – 5 years old

108 members

Vision – the municipalisation of energy and a greater role for LAs in the energy agenda in their locality

Energy – climate emergency - sustainability

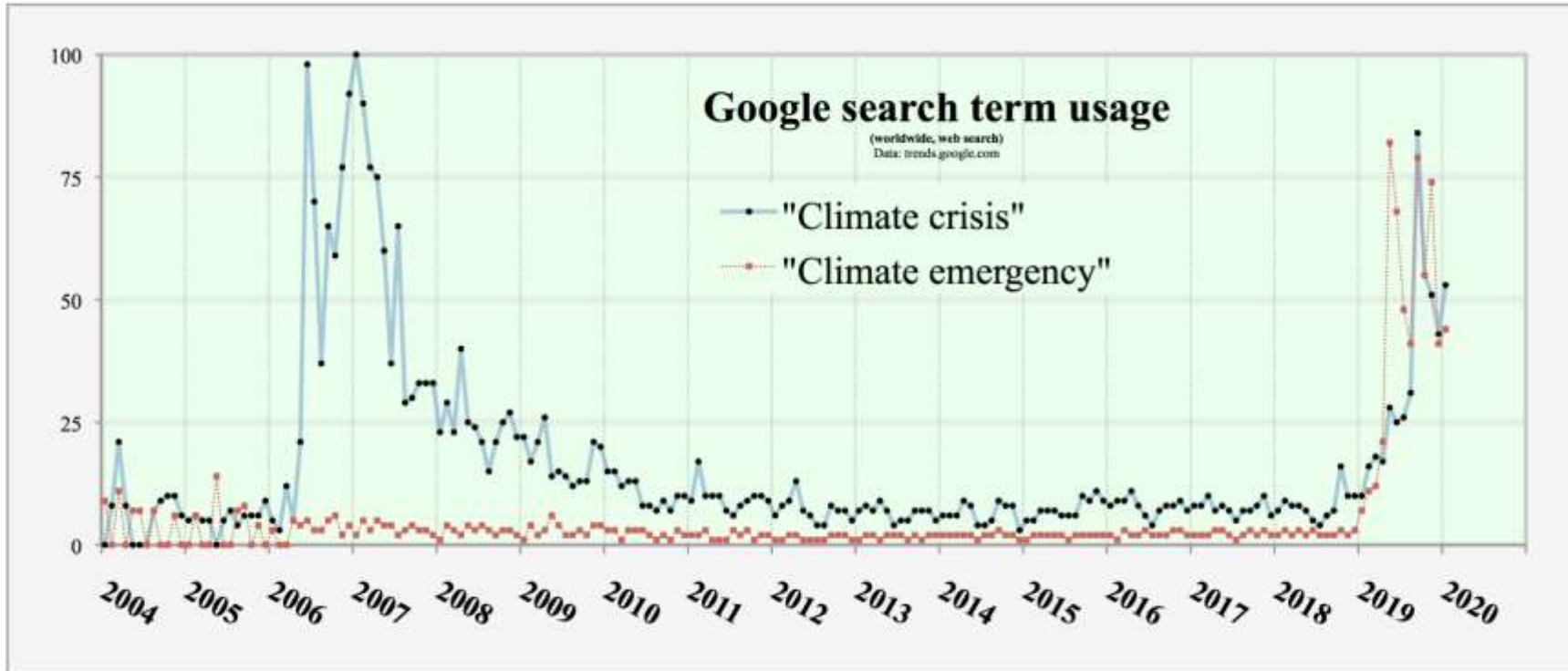
Assets, issues and capacity.











<https://trends.google.com/trends/explore?date=all&q=climate%20crisis,climate%20emergency>

Highstreet emergency, biodiversity emergency, nazi emergency...financial emergency

# How many emergencies do you have!

Legionella outbreak, heating system failure, staff sickness...

Adult social care, children taken into care, fire, pothole in the centre of town...

Priorities – if climate change is an emergency then you act appropriately

What has happened in your service?

Who is leading? E.g. EV infrastructure/DNO, water leaks/UU/Severn Trent?





# How do you deal with an emergency!

Resources, all services, powers and policy from national government, the public, partners, supply chain, Action Plan, expectations

What about the day job?

What about reviewing the day job? Maximum efficiency – more resources to put to an emergency

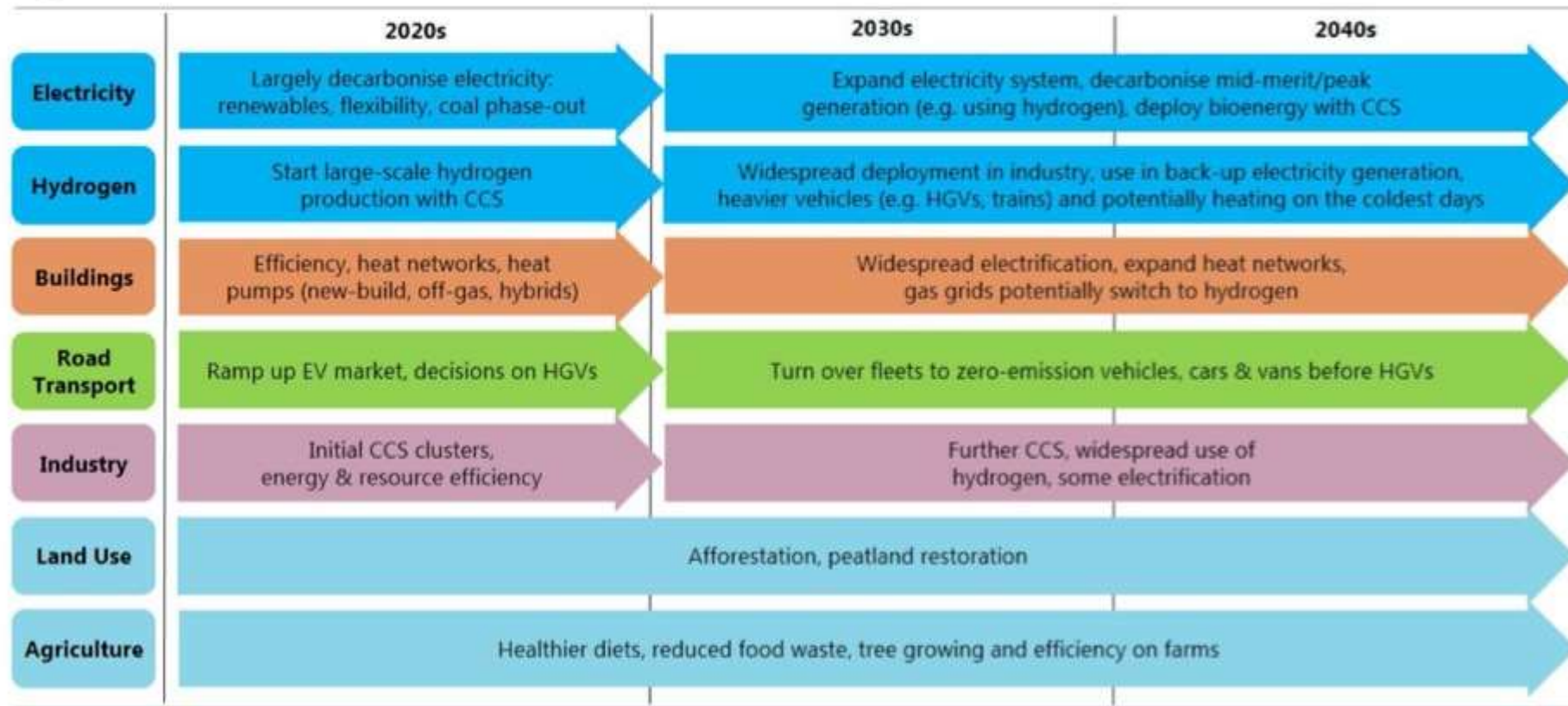
Pro-active not reactive

And you act now!

The screenshot shows the website climateemergency.uk. At the top, there is a navigation menu with links for DECLARATIONS, UNIVERSITIES, NHS, CLIMATE CHANGE, RESOURCES, ACTIONS, POLICY, and ACTION PLANS. The main content area features a map of Europe with numerous pins indicating climate declarations across various countries. The pins are color-coded, with purple and blue pins concentrated in Western Europe (UK, France, Germany) and red and orange pins in Eastern Europe (Poland, Czech Republic, Slovakia). The map is powered by Google My Maps. To the right of the map is a social media feed titled 'Tweets by @ClimateEmergUK'. The feed includes a tweet from the UK Climate Emergency Network (@ClimateEmergUK) dated 19 Jan 2020, which mentions attending Futurebuild 2020. Below this is a retweet by Andy Gouldson (@andys\_gouldson) with a text snippet: 'Really positive climate action emerging here in Leeds that builds on the work of @LeedsClimateCom roadmap, citizens' jury and our role in the big Leeds climate conversation. Well done to all involved! Council to more than halve carbon emissions by 2025 news.leeds.gov.uk/council-approv...'. Below the tweet is a small image of a golden statue and a clock tower.

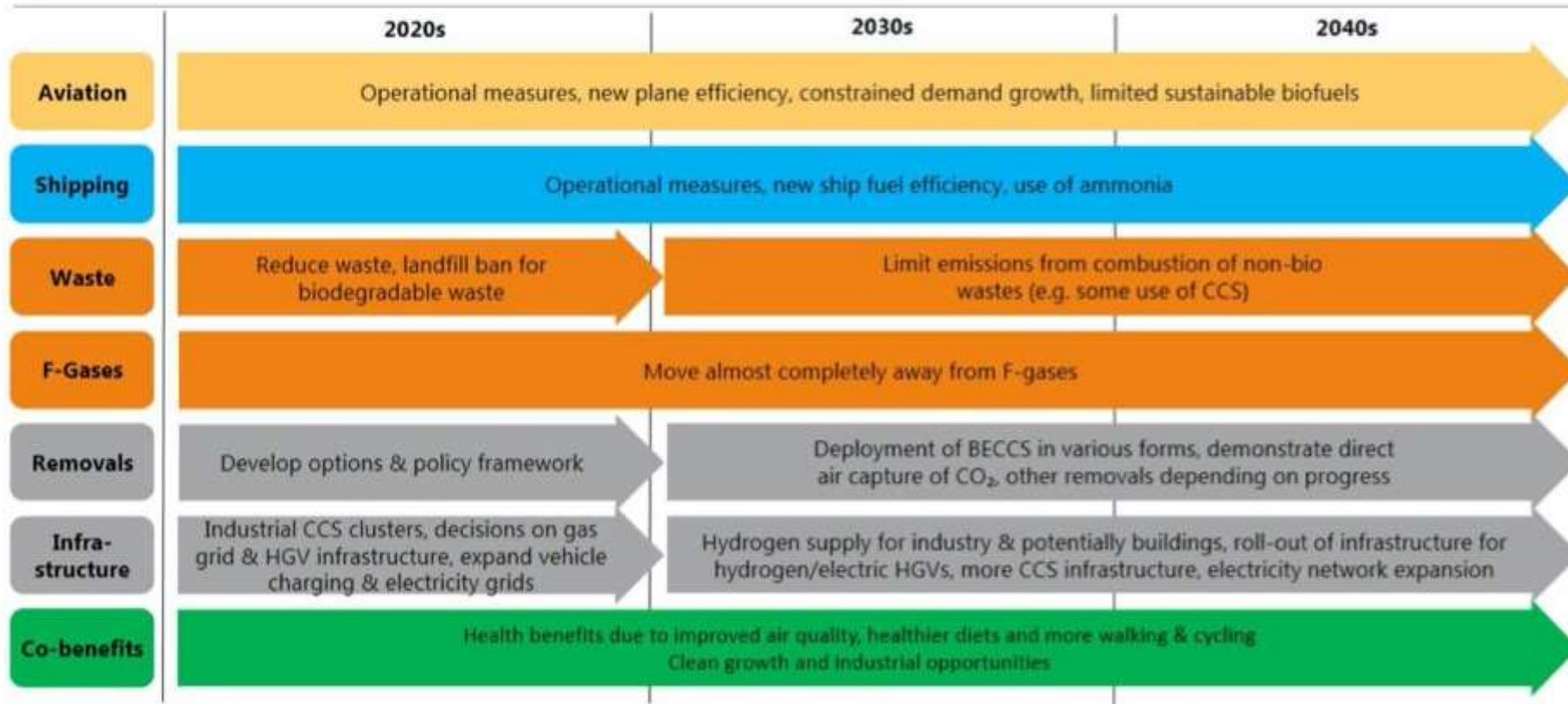


## Reaching net-zero emissions in the UK How UK net-zero scenarios can be delivered





## Reaching net-zero emissions in the UK How UK net-zero scenarios can be delivered



# A focus on...

Global factors, national context, local issues

Know your assets

Communication

Make commitments

Clarify your aspirations



# Examples

Energy Audits

Building Energy Management Systems

Pool covers

Lighting

Timings

Salix

Generation





# Climate Emergency Declarations

A new beginning or more of the same?

Scale – the Council, the locality, supplier, partners?

Timescale – 2028 – 2050... or longer

Leadership – working with others

Citizens – engagement, assembly, jury, survey

# Motions

## ***Durham CC agrees to:***

- 1. Declare a 'Climate Emergency';*
- 2. Immediately adopt a new **Durham County Council target of 60% by 2030** making significant progress towards **making Durham County Council and County Durham carbon neutral** taking into account both production and consumption emissions;*
- 3. Investigate what further actions are necessary to make **County Durham Carbon Neutral by 2050** and pledge to achieve this;*
- 4. **Call on Westminster** to provide the powers and resources to make the 2030 and 2050 targets possible;*
- 5. Work with other agencies and bodies (both within the UK and **internationally**) to determine and implement best practice methods to limit Global Warming to less than 1.5°C;*



# Motions

## ***Carmarthenshire CC agrees to:***

Notice of Motion:

1. Declare a Climate Emergency
2. Commit to making Carmarthenshire **County Council a net zero carbon local authority by 2030**
3. Develop a clear plan for a route towards being net zero carbon within **12 months**
4. Call on Welsh and UK Governments to **provide the necessary support and resources** to enable effective carbon reductions

# Where and how long for?

Examples...

Kettering – 2030 for the whole area

Scarborough – 2030

Nottingham - 2028

Manchester - 2038

South Lakeland – no fixed date

Sheffield – asap

lower tier authorities so no strategic services

Your declaration so your content and date.

# How do you engage?

Who has a declaration?

How do you contribute?

How is internal communication?

What about finance?

Operational targets v whole area

Nottingham, Carmarthenshire

NET ZERO CARBON - Draft Plan - 15 October 2019.pdf - Adobe Acrobat Pro

File Edit View Window Help

Create - [Icons]

12 / 19 204%

Tools Comment Share

Click on Tools, Comment and Share to access additional features.

### Action Plan

Ref	Action to be undertaken	Lead Officer	By When
<b>Carbon Footprint – Non-domestic buildings</b>			
NZC-01	Deliver Re:fit Cymru (Energy Efficiency) Phase 1 project to achieve energy/carbon savings		Apr 2021
NZC-02	Develop further phases of Re:fit Cymru (Energy Efficiency) project, or similar, to achieve accelerated energy / carbon savings		On-going
NZC-03	Incorporate the 'Passivhaus' standard, where appropriate, in new building construction projects		On-going
NZC-04	Continually review and amend design specifications and briefs to reflect new technologies and energy efficient equipment		On-going
NZC-05	Extend 'smart' and sub-metering technology to ensure accurate and timely capture of energy consumption data		On-going
NZC-06	Develop appropriate carbon reduction target for the Council's non-domestic buildings as part of annual review of action plan		Mar 2021
<b>Carbon Footprint – Street Lighting</b>			
NZC-07	Develop appropriate carbon reduction target for the Council's street lighting as part of next annual review of action plan		Mar 2021

# APSE Energy's 12 Points

Leadership

Strategy

Capacity

Action Plan and Projects

Targets and Data

Finance and Risk

Partners

Suppliers

Education and Culture Change

Innovation

Review and Inform

Behavior Change





# How can we help?

Information briefings, publications, events

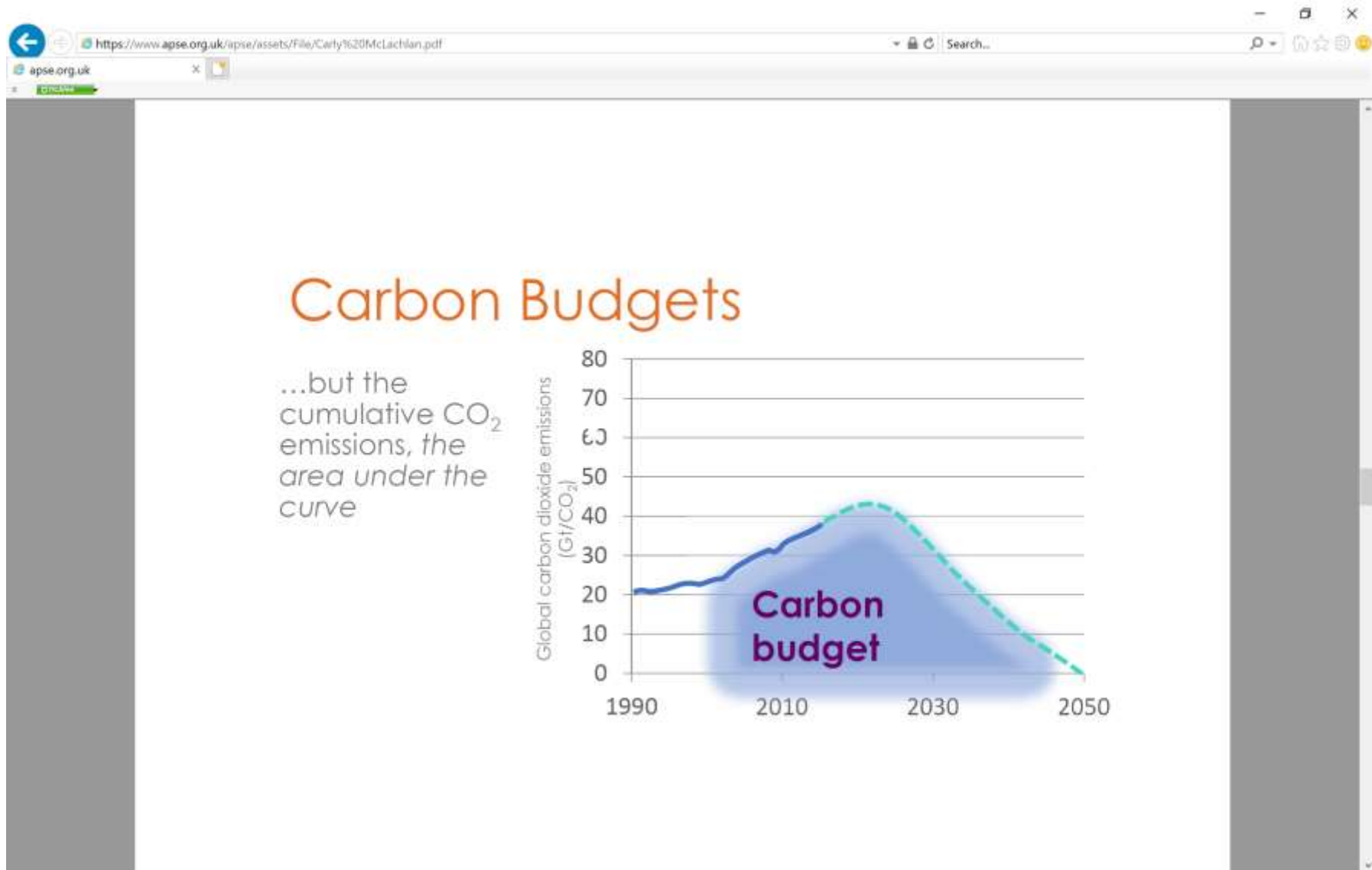
APSE network of experience and expertise

Project support – strategies, action plans, carbon footprints, solar, heating, lighting, engagement, APSE training...



## Becoming Net Zero Carbon Across The Corporate Building Estate





https://www.apse.org.uk/apse/assets/File/Carly%20McLachlan.pdf

## Carbon Limits & Target Years

- The same end point target can have different climate change implications.
- Earlier 'zero' year can have more CO<sub>2</sub>
- CO<sub>2</sub> emissions in the red scenario are 20% higher than in blue

Year	2040 a (MtCO2)	2040 b (MtCO2)	2030 (MtCO2)
2018	16	16	16
2023	6	10	10
2028	2	6	6
2030	1	5	0
2033	0	4	0
2038	0	2	0
2040	0	0	0
2043	0	0	0
2048	0	0	0

12 / 20

# Value

Value for money

Value for carbon

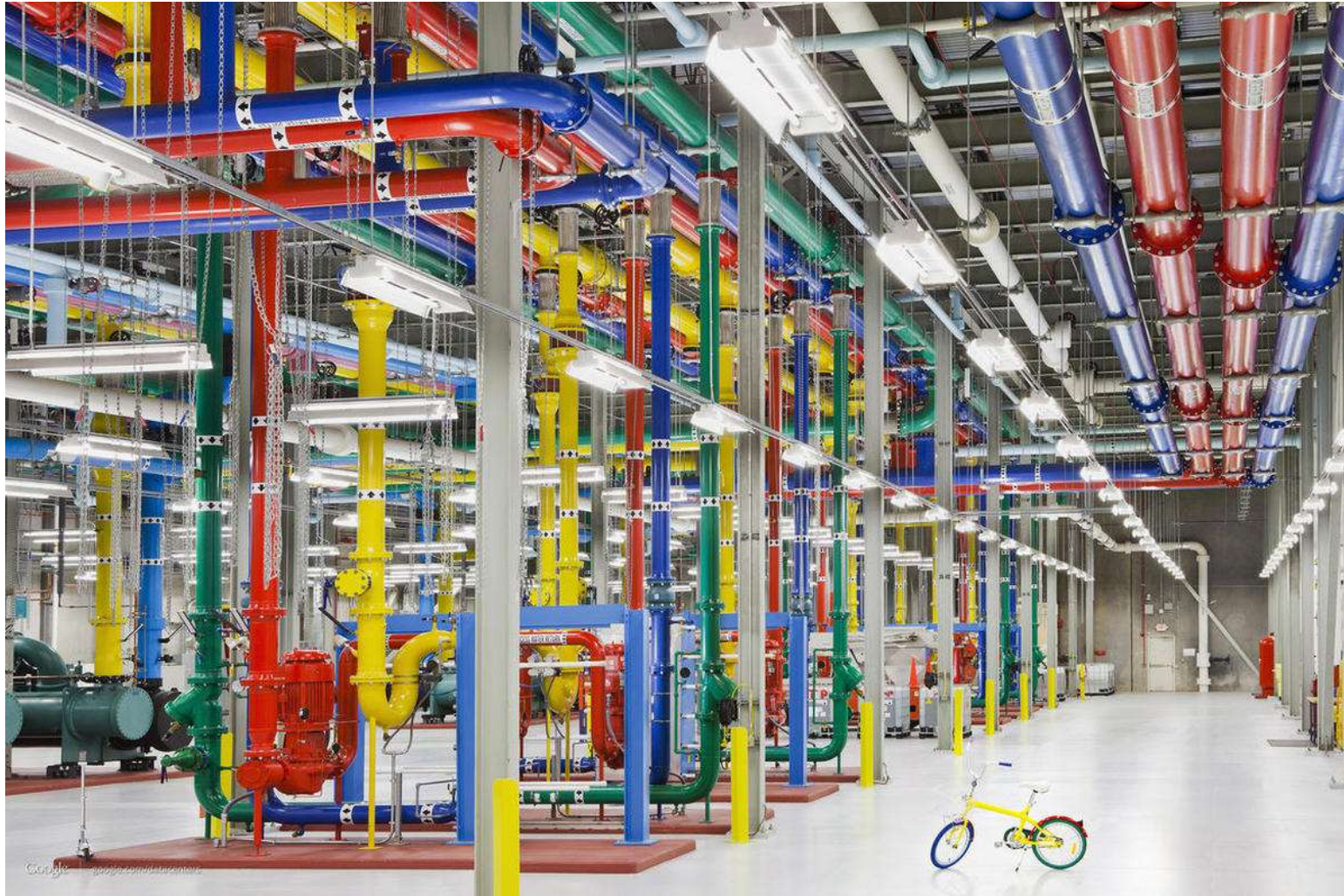
Carbon budget with a carbon value for every action  
How would that change service provision?











Local priorities and searching for content for action plans...

- Supply companies - Bristol Energy/Robin Hood Energy (Nottingham)
- White label arrangements – Islington, Derby, Leeds, Liverpool and more
- Solar - Flintshire, Wrexham, W Sussex, Swindon/PPS
- Batteries
- Solar carports – Nottingham leisure centres and others
- Selling services - Nottingham
- Warrington – solar on logistics depots – econ dev tool/solar investments Yorks – cut own bills and generate income
- ULEV – Leeds, Dundee and many others, and charging infrastructure to prompt behaviour change
- Leasing to buying because fewer moving parts so less likely to go wrong so more likely to retain value
- Sheffield/Westminster – electric waste collection vehicles
- Fife – hydrogen street sweeping vehicle
- Taxis – Birmingham – LPG conversion and grants; Brighton – info campaigns awareness raising; Nottingham – licensing dependent on low emission vehicles for new taxis, funding for ULEVs reduced fees and charging
- Warrington and Gridserve who are siting EV forecourt next to a generating asset
- Glasgow – EV chargers as part of a smart city programme, big use of data/tech to transform transport in the city
- Heat networks – Manchester, Nottingham, Wakefield, Gateshead and elsewhere, HNDU funds
- Bristol – City LEAP - a carbon neutral city by 2030 – led by the council / Bristol Energy – plan to raise £1billion investment for the UKs first carbon neutral city – it is a global search for organisations willing to invest in a JV that will help deliver a net zero energy system in the city by 2030. 180 firms have shown interest and the formal process has just launched – clean energy, social and economic benefits, jobs, a future for the city in terms of technology R&D