

Pittencrieff Park, Dunfermline

A Vision for the Park

Lesley Scott, Major Parks Officer

Leisure and Cultural Services

Fife Council

lesleye.scott@fife.gov.uk



Pittencrieff Park, Dunfermline

A Vision for the Park

“To restore, regenerate and re-establish Pittencrieff Park as one of Scotland’s premier family parks.”

The Park vision was developed in consultation with the Friends of Pittencrieff Park, the Carnegie Dunfermline Trust, ‘Royal Dunfermline’ (a group of agencies formed to promote the development of the town formerly called ‘Developing Dunfermline’) and Fife Council.

As one of Fife’s major parks, Pittencrieff Park will be a park that is welcoming, offers a diverse range of opportunities, meets the needs of the local community and is a well-loved community resource in Dunfermline.

Pittencrieff Park Consultations

In addition to the wider consultation carried out for policies such as the Community Plan, we have gained the views of residents regarding the Park in a number of ways.

People's Panel questionnaires – Greenspace Survey
Extensive series of customer surveys by RGA and ScotInform in
2009/10

The Friends of Pittencrieff Park
Carnegie Dunfermline Trust
Fife Council

Visitor Feedback Forms – Glasshouses
Visitor Feedback – Pittencrieff House Museum
Informal discussion between park users and the Park staff
Formal and informal discussions with interest groups and their
members

Enquiries made through Fife Council's Corporate Complaints
system

Dunfermline EcoCity visioning with Children's Parliament –
November 2010

Consultation Findings

Respondents commented on the Park as follows:

The appearance of the Park is considered to be Good
Maintenance of the Park is considered to be Good
The Park is considered to be safe

The rating for community use (appearance, maintenance and safety)
was given as 20 out of 30

Most visits are monthly
Most people arrive by car

The top reasons for visiting are:
For a walk
To get fresh air
Family outing
Visit the Play Areas



Consultation Outcomes (1)

The top 3 suggested improvements are:

Café facilities

Toilets

Reduce dog fouling

Also:

Develop the horticulture excellence of the Park

Develop the buildings to provide wet weather facilities

Enhance the landscape setting of the Park with consideration of previous historic landscape development proposals

Reinstate the Palace Walkway

Improve visitor interpretation



Consultation Outcomes (2)

Dunfermline EcoCity visioning with Children's Parliament – November 2010

Ideas for the Park included:

Forest Walkway / Treetop walkway

Café

Vegetables

Animal enclosure / park

Extend glasshouses

Adventure play park

Climbing frame

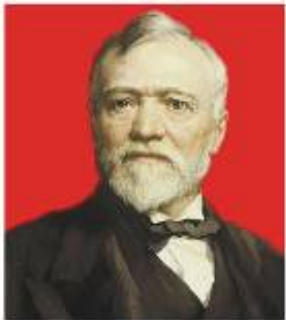
Nethertown play area

Fountains and pond

Harrier jump jet



Pittencrieff Park A Partnership Project



CARNEGIE

DUNFERMLINE TRUST

Carnegie Dunfermline Trust
Friends of Pittencrieff Park
Fife Council



To Deliver the Pittencrieff Park Vision

Physical improvements to the Park

Increase activity in the Park

Improve Glen Pavilion

Improve Pittencrieff House

Restore the Palace Walkway

Heritage Lottery Fund

The Heritage Lottery Fund's '**Parks for People**' programme aims

“to improve the local environment and put parks firmly back at the heart of community life”

It is available for projects that regenerate public parks of national, regional or local heritage value.

Grants are available for whole park projects that meet the definition, priorities and outcomes of the scheme.

www.hlf.org.uk



Pittencrieff Park Heritage Lottery Fund Application

<p>Application submitted for:</p> <ul style="list-style-type: none"> • physical improvements to the Park • to increase activity in the Park 	31 Aug 2011
HLF decision committee	Dec 2011
<p>***AWARDED GRANT***</p> 	Jan 2012
HLF Capital Works programme commences and Urban Park Ranger (3-year post) starts	Autumn 2012
HLF project will be complete	Jan 2016

HLF Capital Works



KEY

- 1 Peacock Sanctuary and Picnic Area
- 2 Glasshouses and Glassroom
- 3 Entrances and Gates Restoration (Park wide)
- 4 Signage and Interpretation (Park wide)
- 5 Park Lighting Improvements (Park wide)
- 6 Nethertown Sculptural Benches
- 7 Glen Pavilion Stepped Arena Repairs
- 8 Redundant Toilet Block Demolition
- 9 Glen Pavilion Lawn Improvements
- 10 Woodland Bulb Planting
- 11 Events Lawn Improvements
- 12 Events Shelter Refurbishment
- 13 Redundant Paddling Pool Removal
- 14 Laird's Garden Improvements
- 15 Italian Garden Improvements
- 16 Lily Pond Garden Improvements
- 17 Telephone Kiosk Refurbishment
- 18 Sandstone Rock Garden Improvements
- 19 Locomotive Restoration
- 20 Lower Glen Improvements
- 21 Wallace's Well Improvements
- 22 Humpback Bridge Drainage Works
- 23 Japanese Garden / Summer House Improvements
- 24 Andrew Carnegie Statue Refurbishment
- 25 Shrub Bed Improvements (Park wide)
- 26 Improvements by Malcolm Canmore's Tower
- 27 Dovecot Refurbishment
- 28 Stone Steps Improvements
- 29 Double Bridge Railings Refurbishment
- GP Glen Pavilion
- PH Pittencrieff House
- Playpark
- P Parking



HLF Capital Works

Physical improvements to the Park (1)

- **Project 1**
Refurbish area for picnics / barbecues for families and youth activities. Create new peacock enclosure and develop wildflower meadow.
- **Project 2**
Refurbish glasshouses and develop classroom resource.
- **Project 3**
General restoration, painting and upgrading of gates and entrances.
- **Project 4**
Provide: information / interpretation panels at key entrances; interpretation panels at key sites; directional pedestrian signage; suite of orientation and educational leaflets; and a series of celebratory events.



HLF Capital Works

Physical improvements to the Park (2)

- **Project 5**
Revamp park lighting – improve controls, rewire, new lanterns, paint dark green and refurbish columns.
- **Project 6**
Introduce sculptural seating at Nethertown Play Area.
- **Project 7**
Repair historic steps like for like at Glen Pavilion Car Park (North). Install picnic tables.
- **Project 8**
Demolish redundant, derelict Toilet Block and replant area for biodiversity.



HLF Capital Works

Physical improvements to the Park (3)

- **Project 9**
Glen Pavilion Lawn – level, install drainage, and re-grass.
- **Project 10**
Thin South Woodland Area – bulb planting.
- **Project 11**
Events Lawn - improve drainage.
- **Project 12**
Refurbish Events Shelter (to provide storage area) and upgrade landscape surrounds.



HLF Capital Works

Physical improvements to the Park (4)

- **Project 13**

Remove all Paddling Pool bases and concrete, compact and level site; create lawn area, create seating around trees. Mark site of well if found.



- **Project 14**

Laird's Garden - restore rose beds, bedding, herbaceous borders, heather beds, box hedging, the Laird's Walk. Develop new winter garden, herb garden and accessible demonstration kitchen garden. Refurbish entrance features and improve paths.



- **Project 15**

Italian Garden - minor improvements.



HLF Capital Works

Physical improvements to the Park (5)

- **Project 16**
Lily Pond – improve pond, plant lilies and other aquatics. Improve garden beds, add climbers.
- **Project 17**
Telephone Kiosk – general refurbishment.
- **Project 18**
Sandstone Rock Garden – remove overgrown / diseased shrubs and trees. Replant with alpine species.
- **Project 19**
Refurbish Locomotive.



HLF Capital Works

Physical improvements to the Park (6)

- **Project 20**

Lower Glen – reinstate historic views, new tree / shrub planting, replace fencing, upgrade paths, refurbish bridges, tidy historic structure areas.



- **Project 21**

Wallace's Well – erect new cover, improve surrounding area, new interpretation.



- **Project 22**

Humpback Bridge – drainage works.



- **Project 23**

Japanese Garden – selective felling of trees, replant with herbaceous and shrubs, improve paths and fencing, upgrade summer house.



HLF Capital Works

Physical improvements to the Park (7)

- **Project 24**
Clean and repair Andrew Carnegie Statue and plinth. Redesign beds and replant. Crocus and scilla bulb planting along avenue.
- **Project 25**
Refurbish selected planting beds with supplementary and new planting to be welcoming and colourful.
- **Project 26**
Malcolm Canmore's Tower – replace fencing and clean up existing fencing. Upgrade path sections. Restore important views by careful tree removal and management.
- **Project 27**
Refurbish dovecot and install strong door.



HLF Capital Works

Physical improvements to the Park (8)

- **Project 28**
Clean and repair set of historic steps and remove remnants of derelict steps.
- **Project 29**
Tower Double Bridge – refurbish balustrade fencing and manhole covers.



HLF Activity Plan

Increased activity in the Park (1)

Participation

- Helping more people, and a wider range of people, to take an active part in and make more decisions about their heritage through:
 - Creating opportunities for people to volunteer
 - Helping the community to take an active part, including helping people make decisions about heritage
 - Developing new and wider audiences for the heritage



Learning

- Helping people to learn about their own and other people's heritage through:
 - Providing information about the heritage and interpreting it for people
 - Creating opportunities for people to gain new or increased skills
 - Holding events / activities to help the general public or particular groups of people learn about the heritage



HLF Activity Plan

Increased activity in the Park (2)

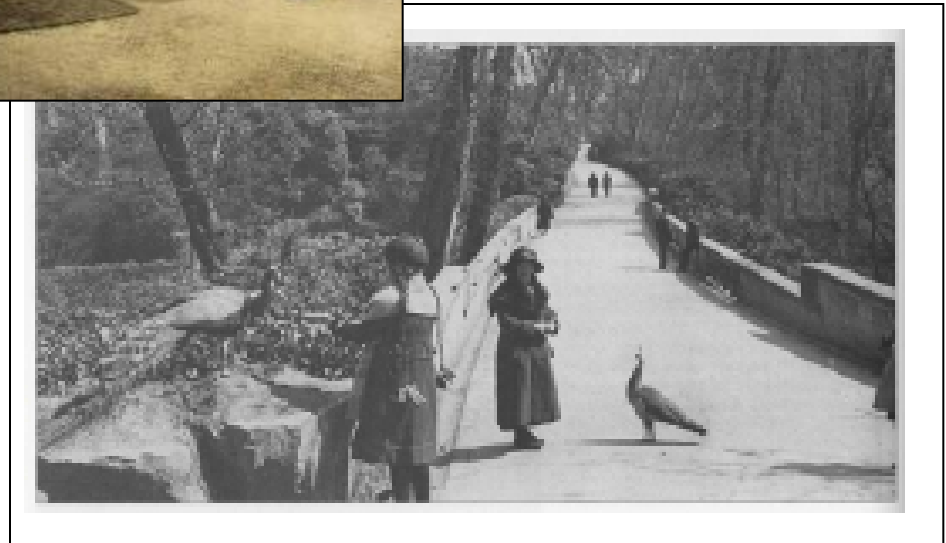
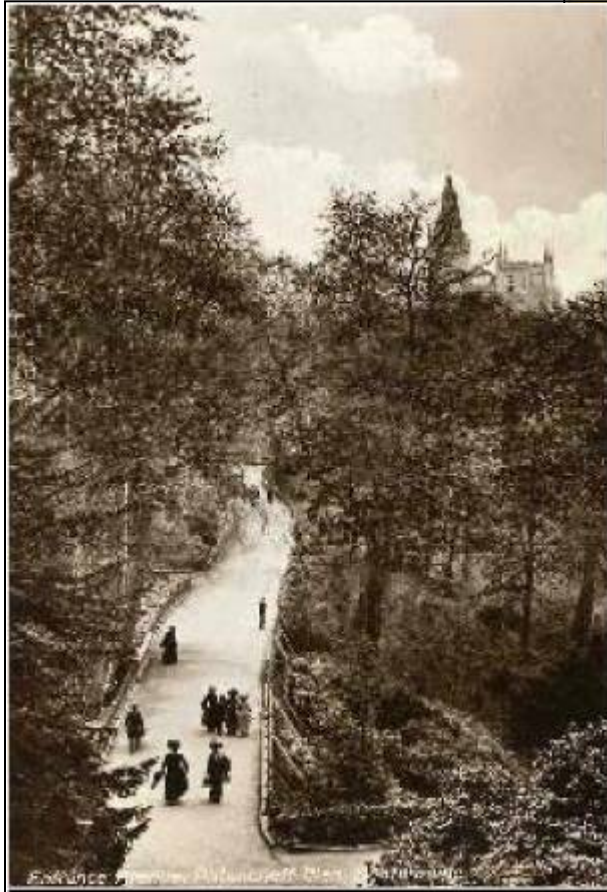
Outcomes:

- Increased visitor attendance at Pittencrieff Park
- Positive perception of Pittencrieff Park within and beyond Fife Council
- Improved customer satisfaction ratings
- Increased number of events staged in Pittencrieff Park
- Increased number of volunteers involved with Pittencrieff Park



Pittencrieff Park

The Park has been here for over one hundred years....



.....and hopefully for the next hundred years!



Pittencrieff PARK

The park was gifted to the people of Dunfermline by Andrew Carnegie in 1903 and it is a wonderful place to enjoy the outdoors at any time of the year. Open every day.

Pittencrieff House Museum

Opening times:

April to September - open daily - 11am to 5pm

October to March - open daily - 11am to 4pm

Entry to the museum is free of charge. It houses a permanent exhibition "Magic of the Glen" which tells the history of the park, going back 350 million years.

Glen Pavilion

Opening times: Monday to Friday 9am to 4pm
also open evenings and weekends for events and pre-booked functions

The Pavilion is a unique Art Deco style building which was built in 1927. It is open for events throughout the year.

Peacock Rooms

Serving delicious food and drink

Opening times: 10am - 4.30pm, 7 days a week

Glasshouses

Opening times:

Monday to Thursday 9am to 3.45pm

Friday 9am to 12.30pm

Saturday and Sunday 1pm to 3.45pm

The glasshouses contain a variety of exotic and tropical plants from many parts of the world.

Formal Gardens

The colourful formal gardens are located in front of the glasshouses on the area which was once used as the kitchen garden and orchard for Pittencrieff House.

Italian Garden - Lily Pond

A lovely spot to sit, relax and enjoy the view of the lily pond.

Play Areas

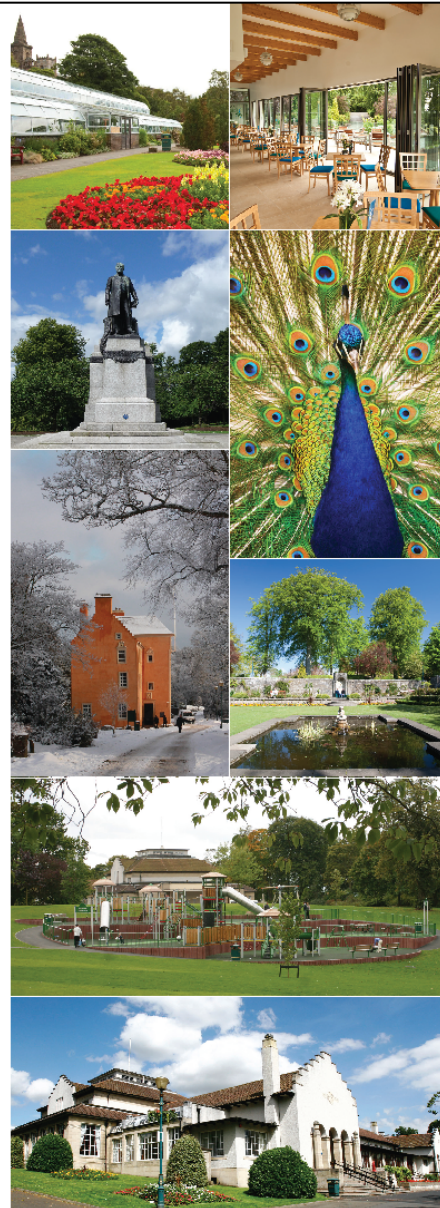
There are three play areas in the park - one at the Nethertown entrance and two near the main car park at Pittencrieff Street.

Public Toilets

Opening times:

Summer 9am to 4.45pm, Winter 10am to 4pm

There are ladies/gents/disabled and baby changing facilities located beside the Italian Garden. Free of charge.



For more information about the park
tel: 01383 739272
email: glen.pavilion@fife.gov.uk
www.fifedirect.org.uk/pittencrieff

The Friends of Pittencrieff Park is a registered charity working towards the improvement and maintenance of the park for the benefit of the public. Become a friend:
email: info@friendsofpittencrieffpark.co.uk
www.friendsofpittencrieffpark.co.uk