

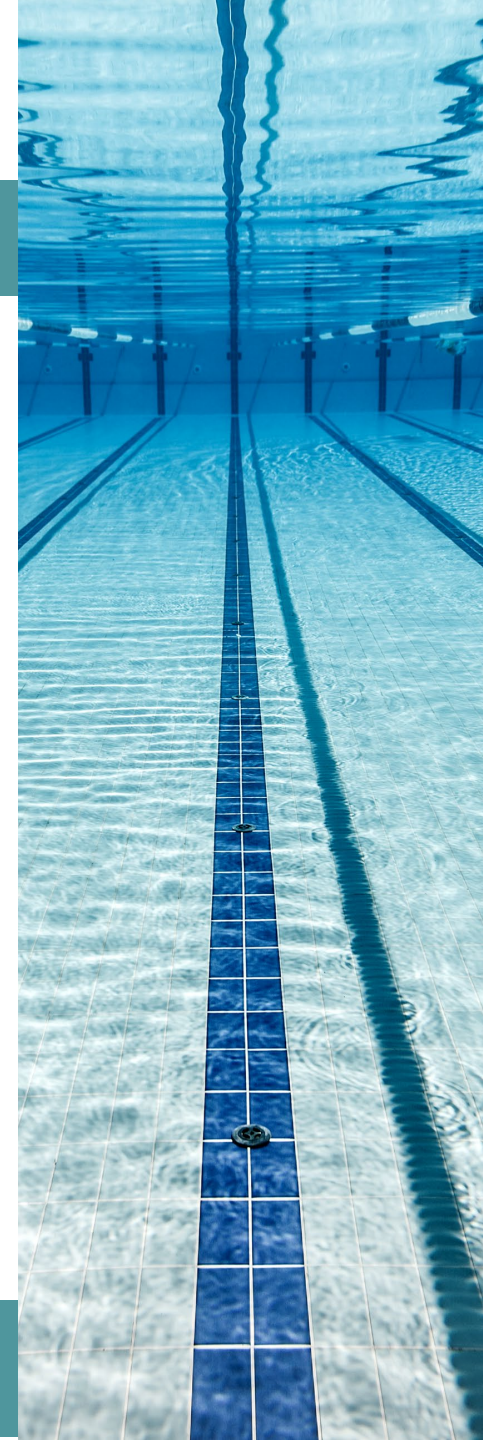
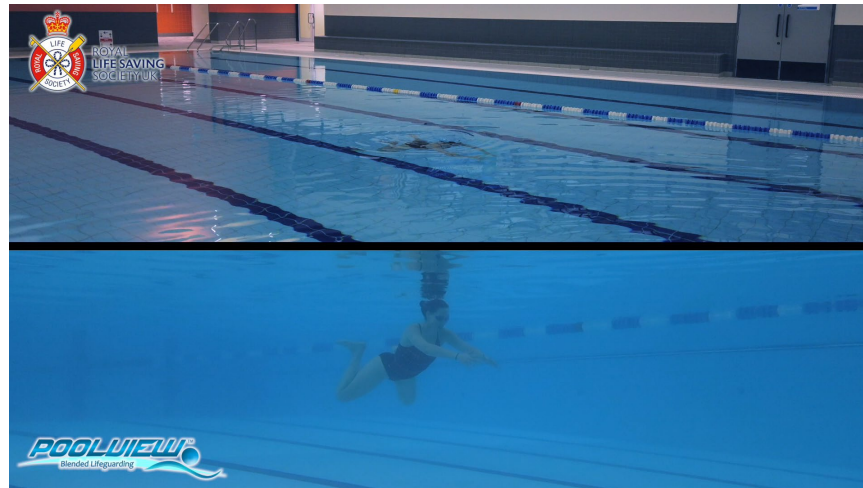
Swimming Pool Technology

Evolving the Industry



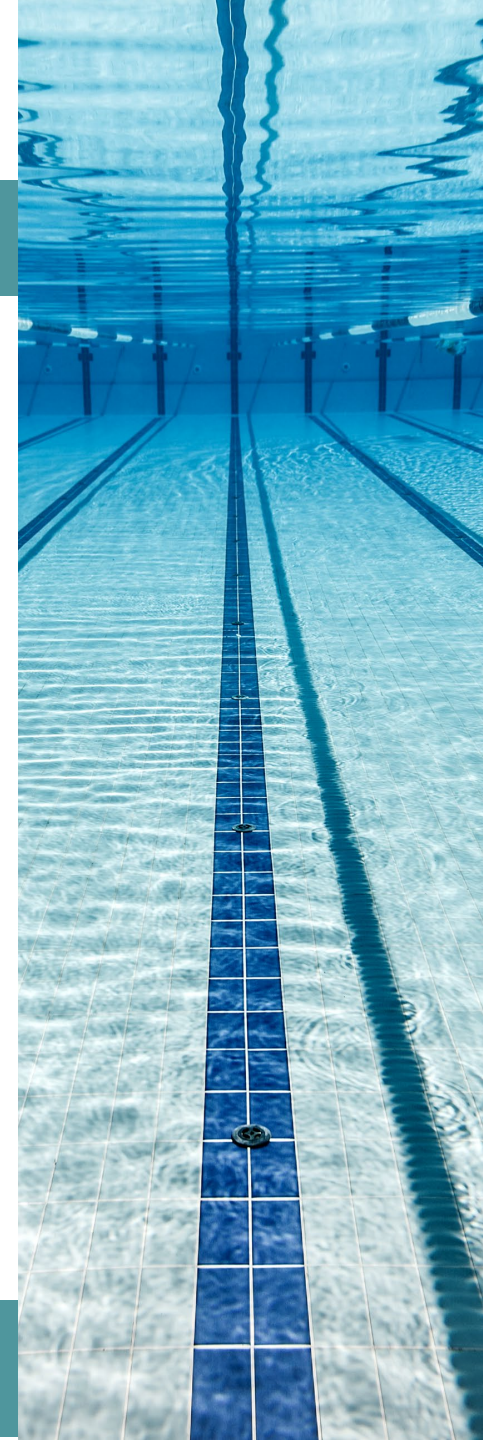
WHY TECHNOLOGY?

- Fatalities in swimming pools are thankfully rare
- Whilst people do drown, many incidents are medical
- Those in difficulty present very differently
- We now know more about the ability of lifeguards



LIFEGUARDS' ABILITY

- Lifeguards are human
- The environment is sometimes very hot, noisy and humid
- Did you know that in many European airports, staff viewing the luggage scanners can only remain in one location for 20-30 minutes?
- RLSS UK is committed to research to support swimming pool operators and lifeguards but ultimately reduce drownings



RESEARCH: LIFEGUARD – THE FUTURE

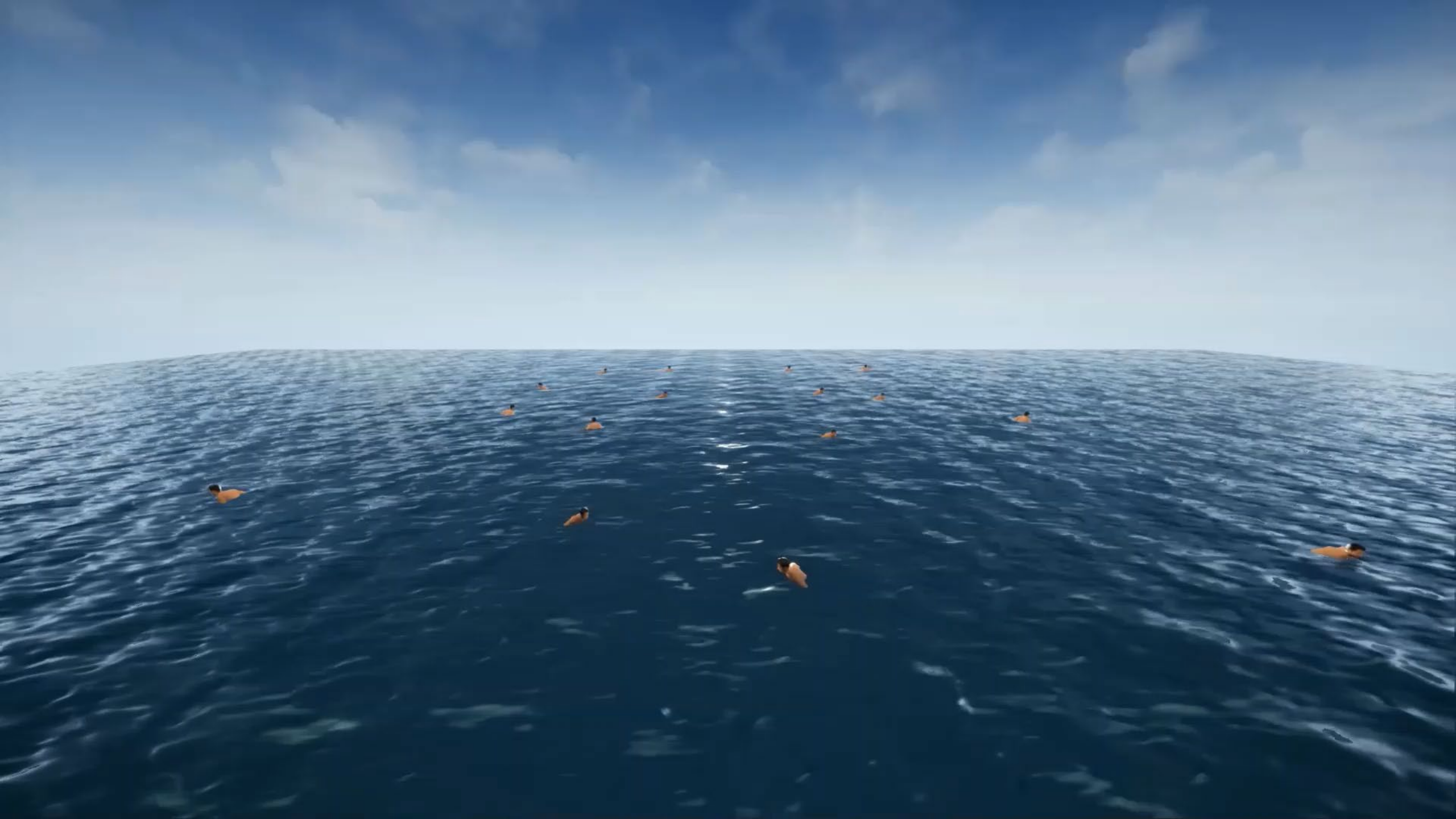


UNIVERSITY OF
CHICHESTER

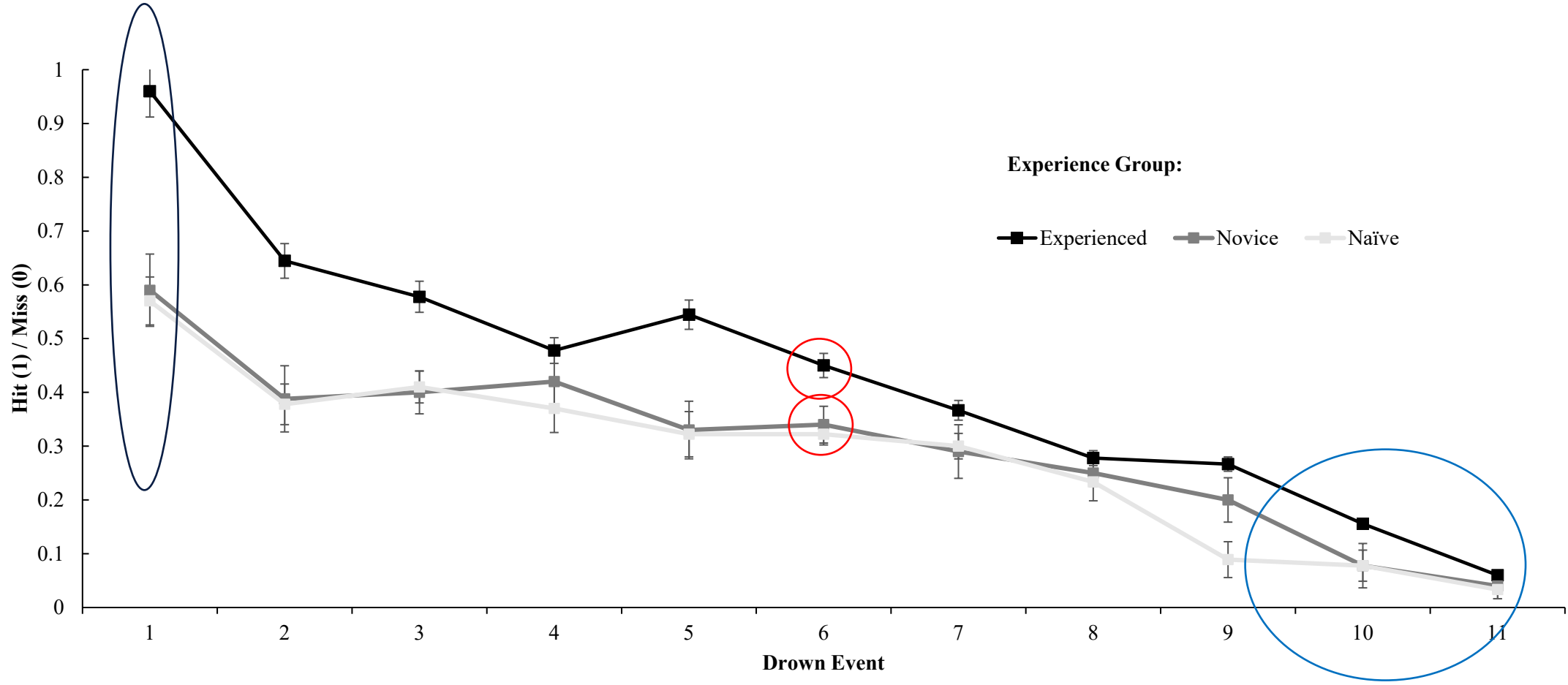


Jo Talbot
Nick Grazier
Prof Marcus Smith
Prof Steve Williams

Jenny Smith
Ben Sharpe
James Bryant
Emmanuel Obine



Study 2: Lifeguard Vigilance & the Associated Challenges

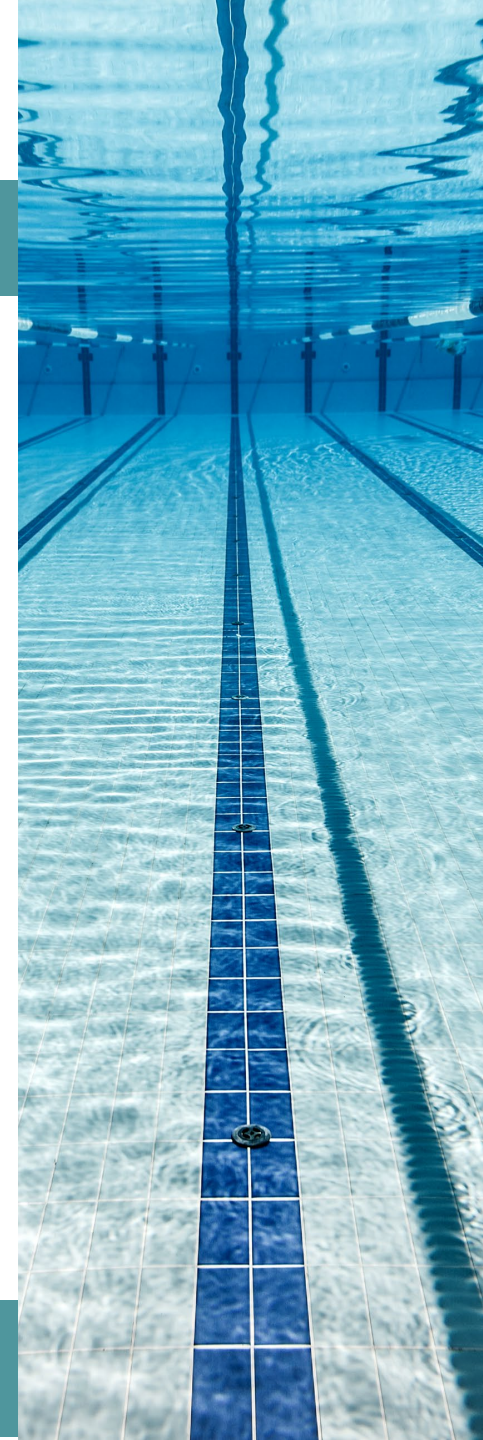




LIFEGUARDS

Lifeguards are imperative to:

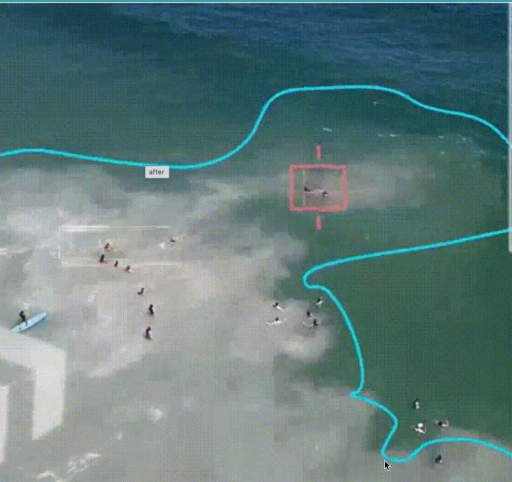
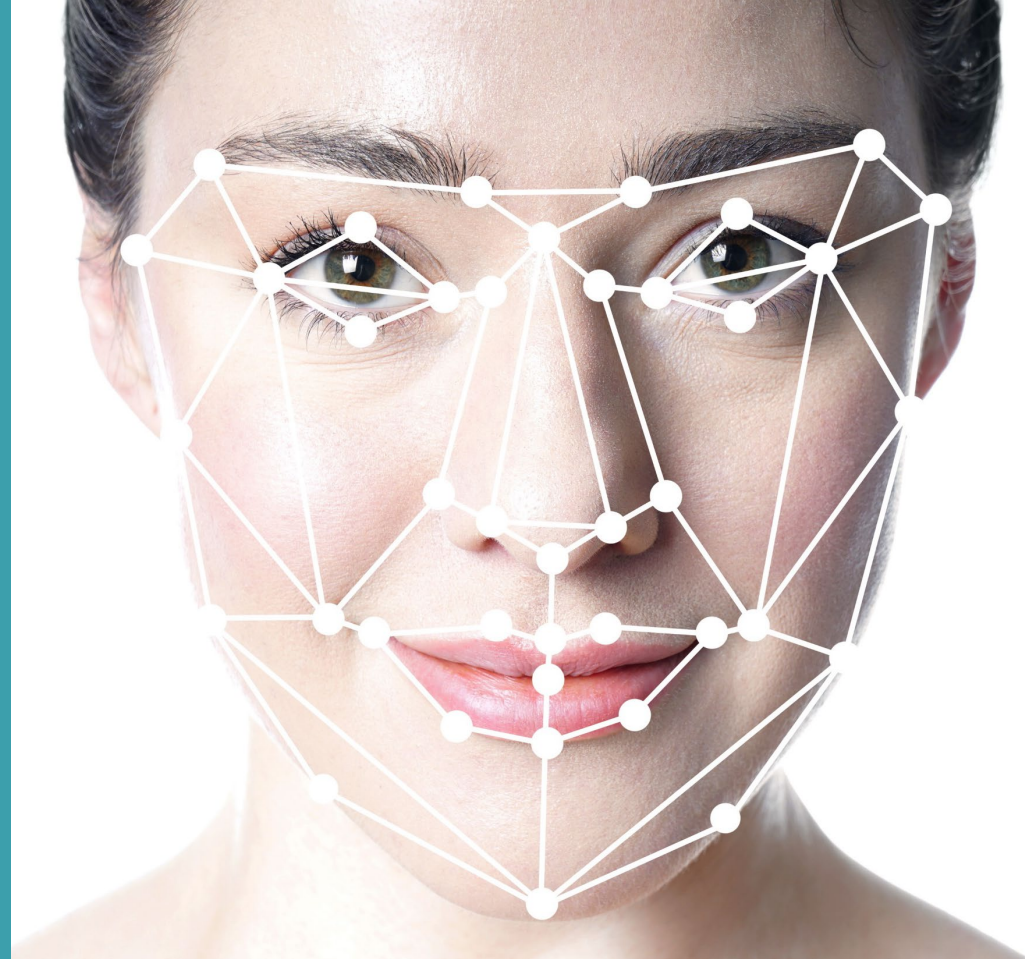
- Identify hazards
- Prevent accidents
- Educate pool users
- React
- Rescue
- Recover
- Resuscitate



Technology

Everywhere we look, technology is a part of everyday life.

Is it time for our industry to embrace technology?



HISTORY

1999

Detection of a stationary object on the bottom of the pool

Systems that track swimmers, learn behaviour patterns, and detect abnormal behaviour

2023

2025

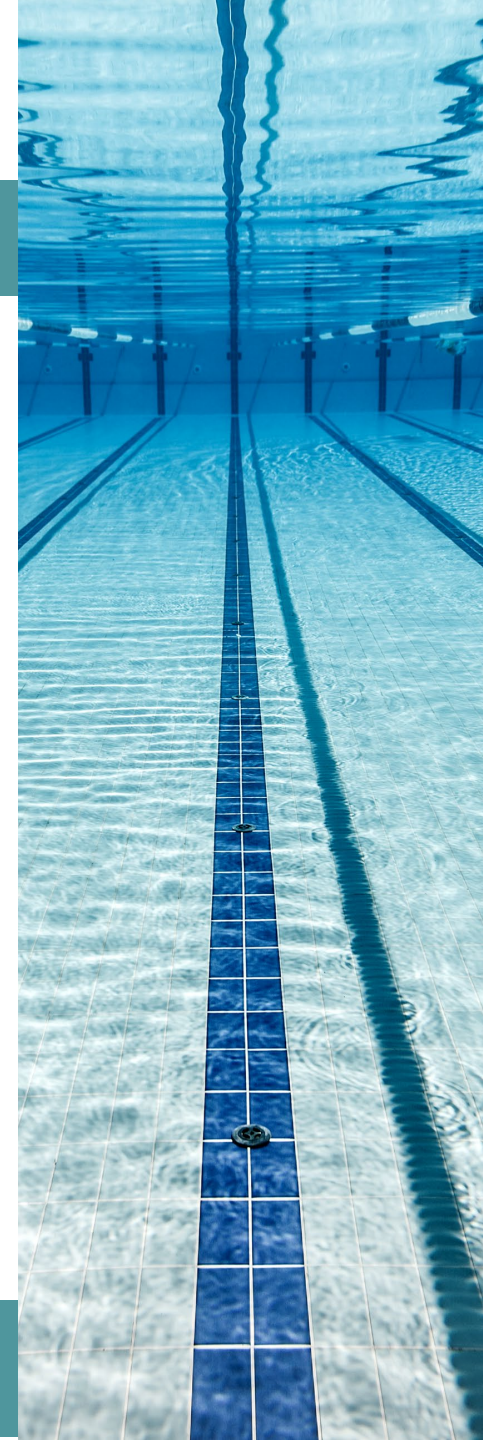
Systems detect from surface to pool floor and collect data on pool use



TODAY

We now have some great technology to:

- Support lifeguards
- Enhance safety in swimming pools
- Provide swimming pool operators with the following:
 - solutions to manage blind spots and design challenges
 - data on swimming pool use
 - opportunity to manage overhead costs



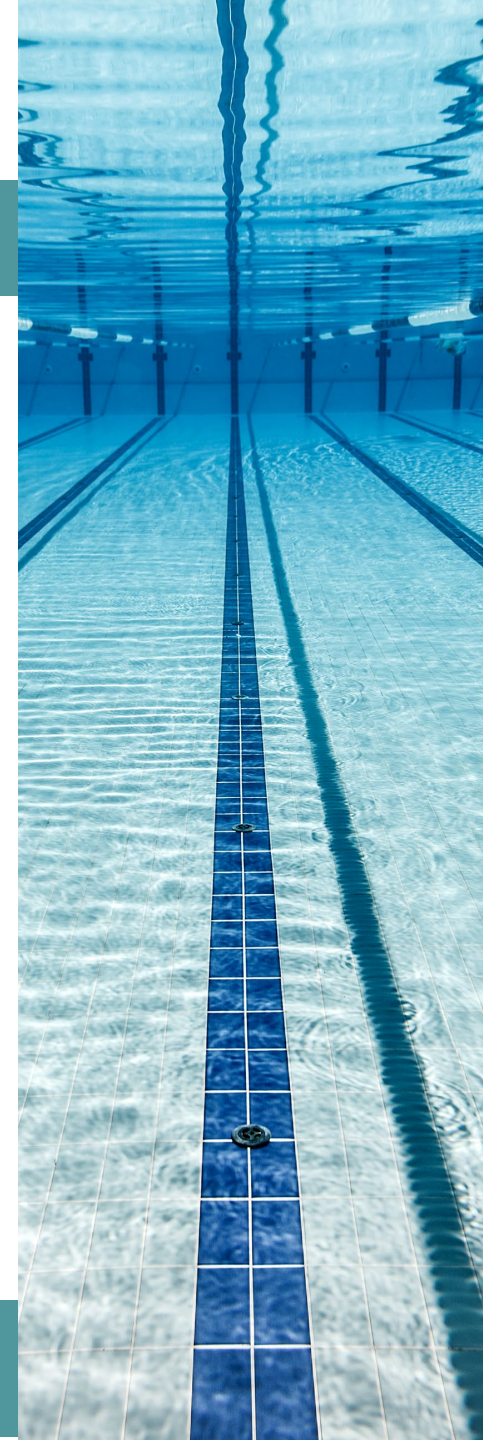
SYSTEMS

AngelEye 

lynxight

POOLVIEW
Safer Swimming Systems 

Poséidon
by maytronics 



Swimming
Pool
Supervision
Technology
ING01

Guidance for Automated Monitoring and Detection Systems

To provide an additional layer of safety in swimming pools to save lives.



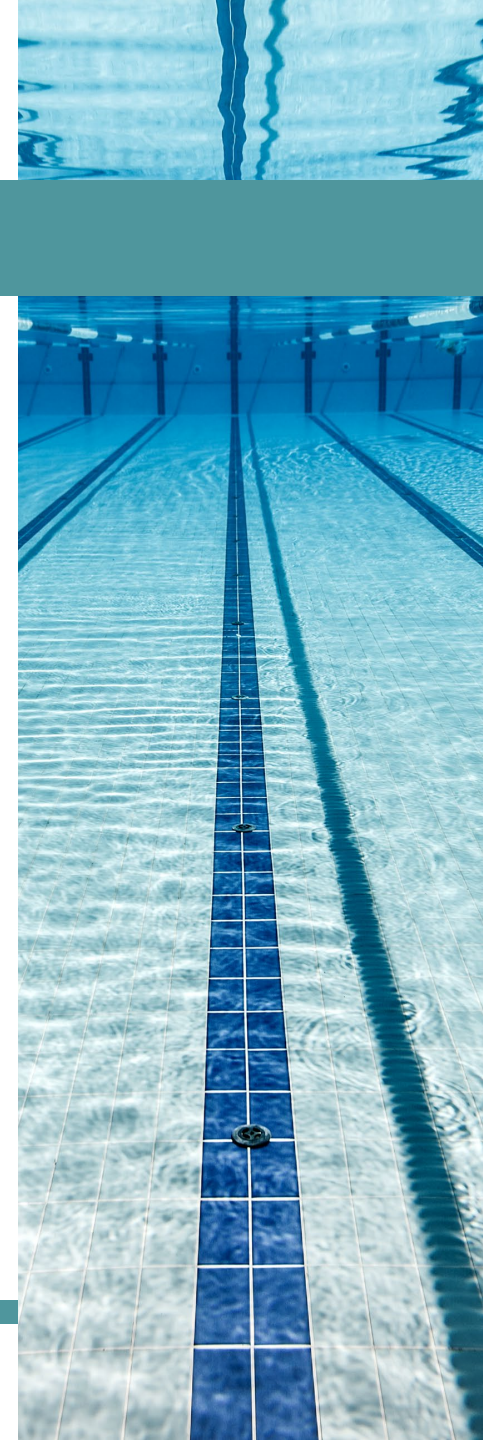
More people
More active
More often

LIFEGUARDED POOLS

Primary function - to support and alert lifeguards to identify and respond to a developing emergency promptly

Automated monitoring and detection systems **may** be used to help fulfil the guidance in HSG179, which requires 100% visibility of the pool (full volume of water from the surface to the pool basin floor). However, careful consideration must be given to the system's limitations, e.g. coverage.

Lifeguard Zone Visibility Tests (LZVTs) will need to be completed to ensure the lifeguard and the system, can achieve 100% together.



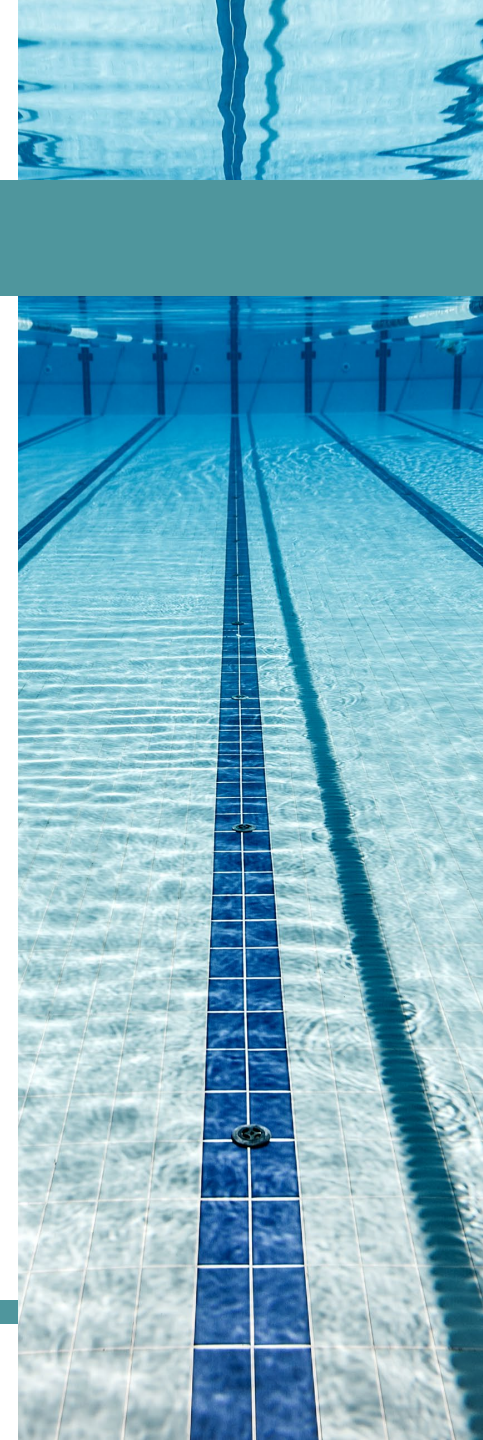
LIFEGUARDED POOLS



NON-LIFEGUARDED POOLS

Where a swimming pool operator does not deem it necessary (through risk assessment and guidance) to have lifeguards present to supervise the swimming pool, an operator may choose to use an automated monitoring and detection system to enhance safety and provide surveillance for the swimming pool.

In these circumstances, operators should carefully consider who will respond in an emergency, what skills they will require, and how they will get notified of an emergency.



deep
vision

lynxight



ROYAL
LIFE SAVING
SOCIETY UK

Enjoy Water **Safely**

Types of Technology



Swimmer behaviour analysis
and casualty recognition
systems



Submersion detection systems



Personal wearable submersion
detection systems



Underwater and overhead
CCTV cameras

Assisted Lifeguard Technology (ALT)



RLSS UK supports the use of technology to assist lifeguards in monitoring and supervising swimming pool users, to **intercept** incidents of swimmers' ill health, and ultimately **prevent** drownings.



How does Lynxight work?



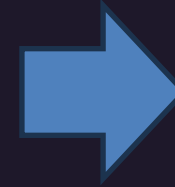
Lynxight has 3 main components:



Cameras that collect the data from the pool



Computer server/cloud that analyses the data



A smart watch to alert the lifeguard of a potential emergency

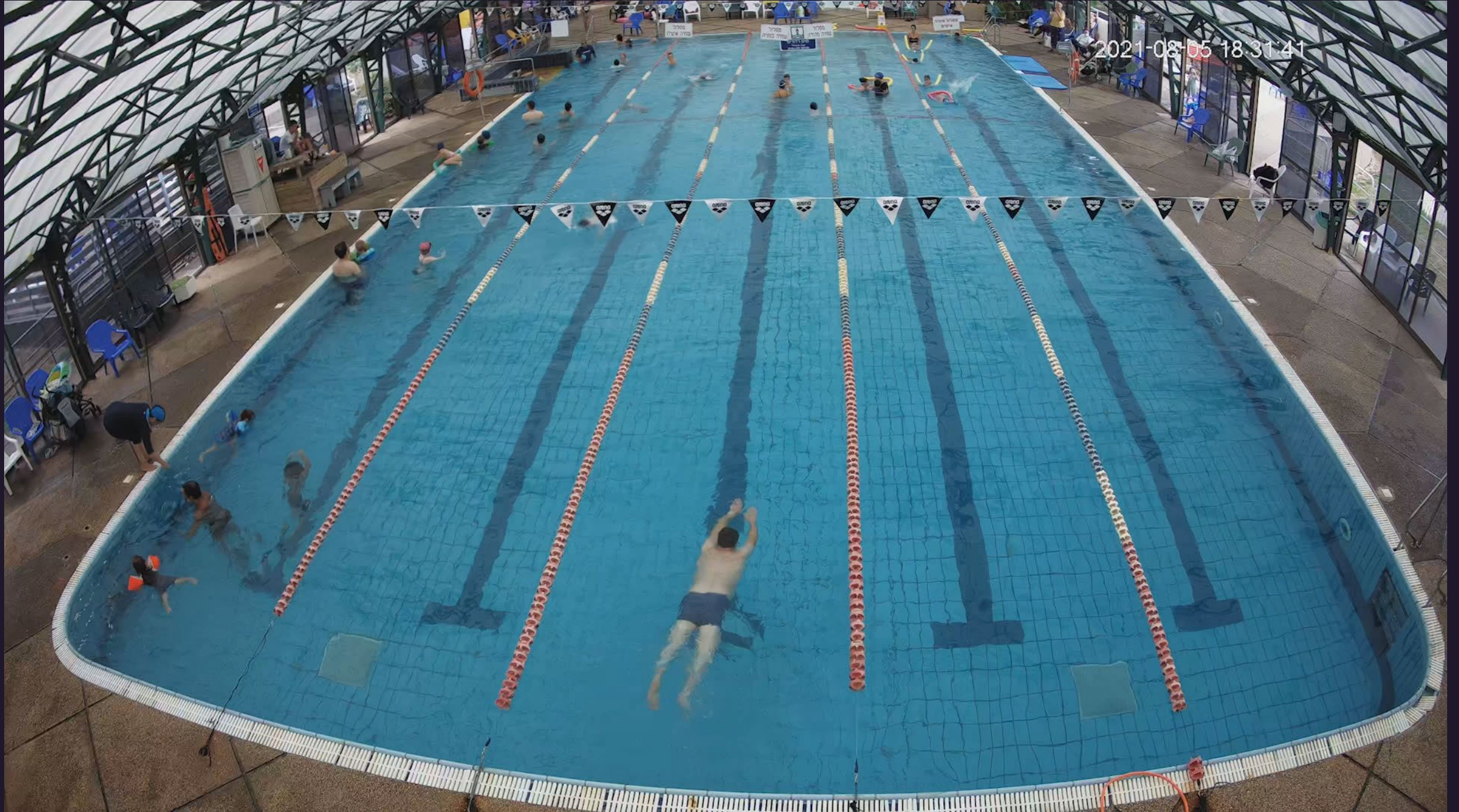
How does Lynxight work?



- **Artificial Intelligence (AI)** monitors swimming pool users and detects potential swimmer distress.
- **Image reconstruction** is used to correct footage through ripples and splashes to ensure everyone can be monitored.
- **Swimming behaviour algorithms** help the system detect those that need help.

The video up next shows how the system monitors pool users....

2021-08-05 18:31:41



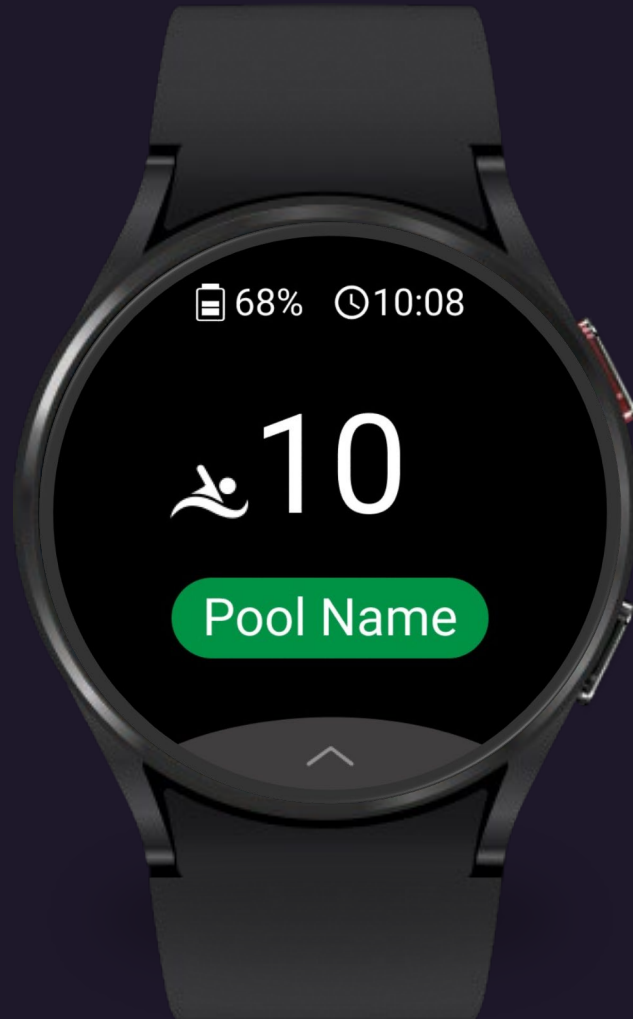
What do the responders see?



ROYAL
LIFE SAVING
SOCIETY UK

Enjoy Water **Safely**

lynxight



The watch's home screen displays information for the full system. Swipe right or left to move between pools.

On the home screen, you will see:

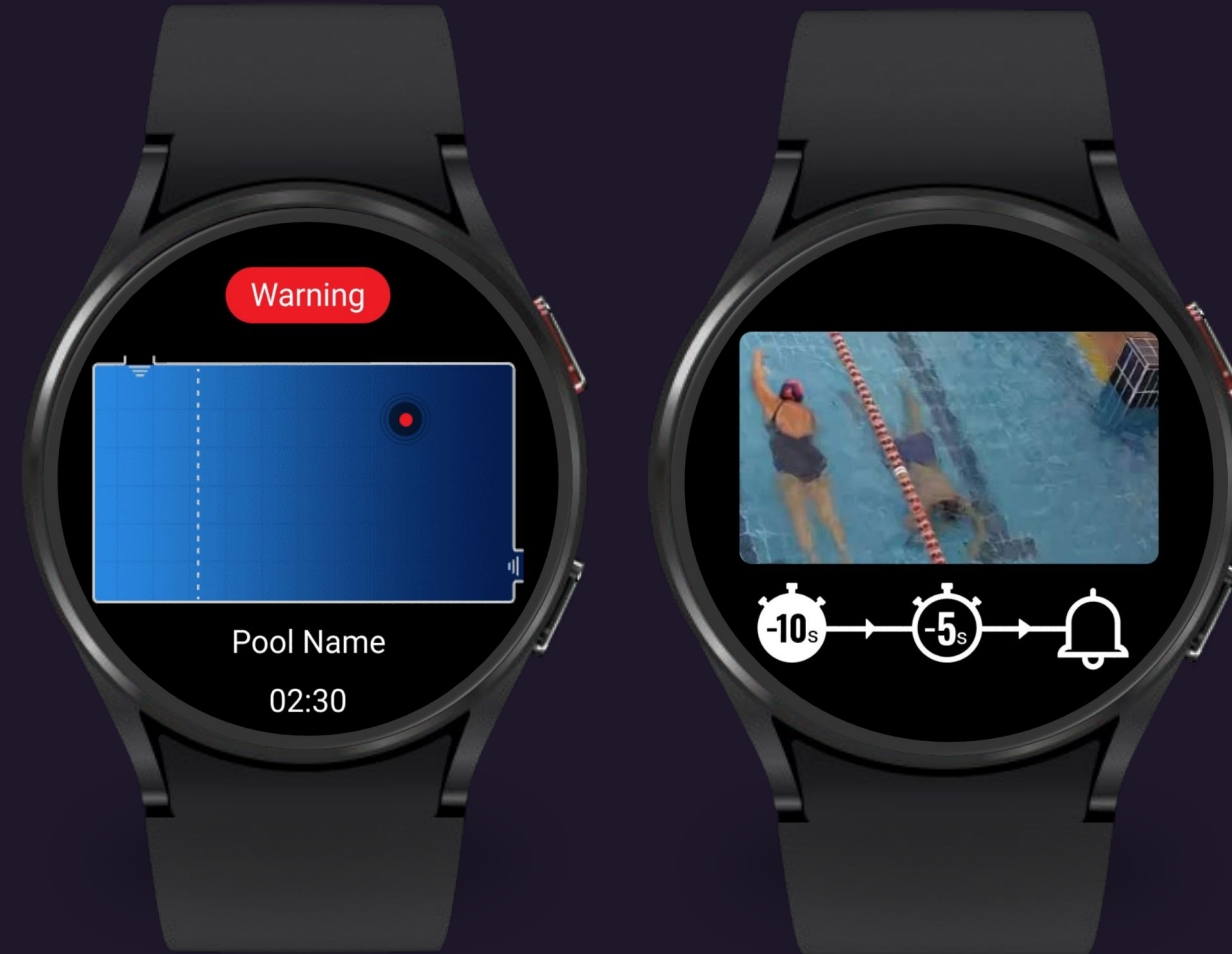
- The number of pool users
- Pool Name
- % of battery
- Time

Smartwatch alerts



When the system identifies an incident, the watch will:

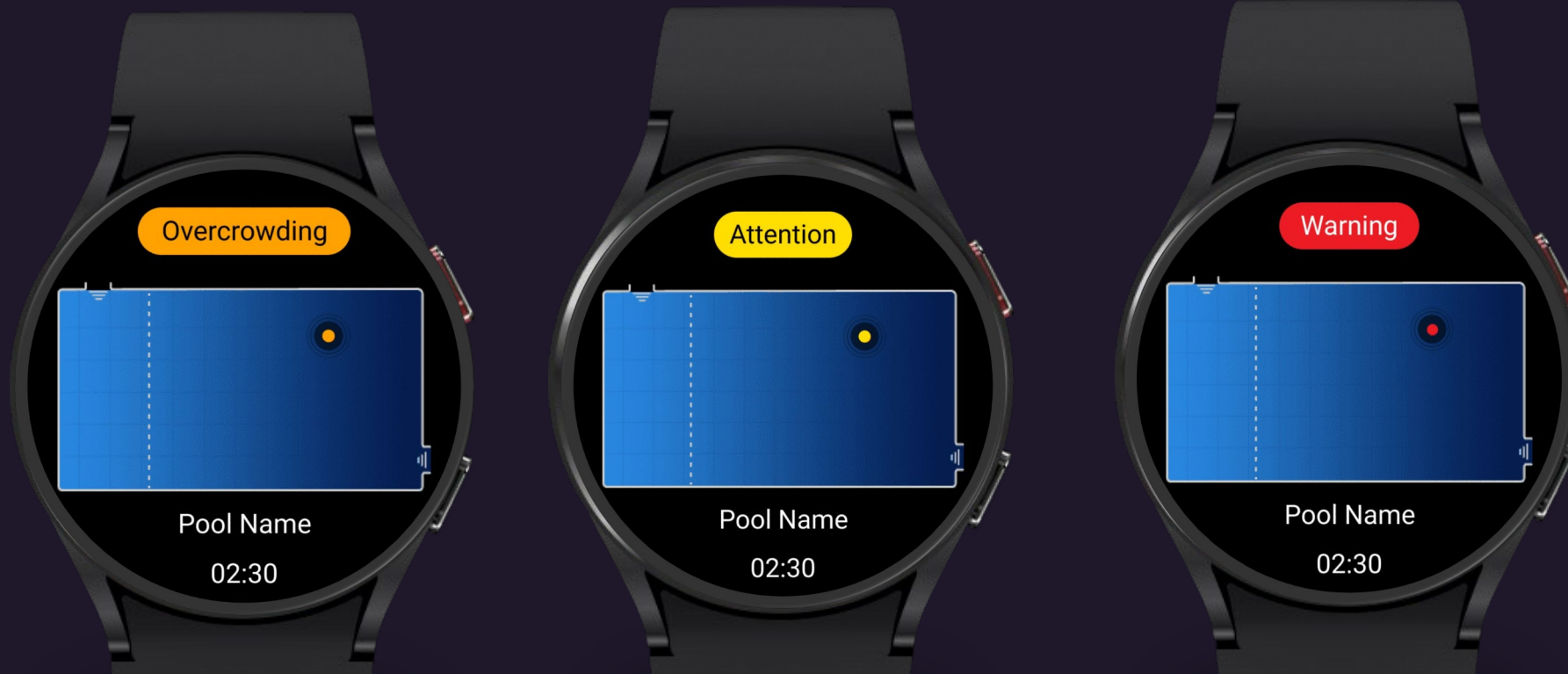
- Vibrate
- Sound an alarm
- The location of the incident will appear on your watch
- The time since the start of the incident will also appear



Smart watch alerts

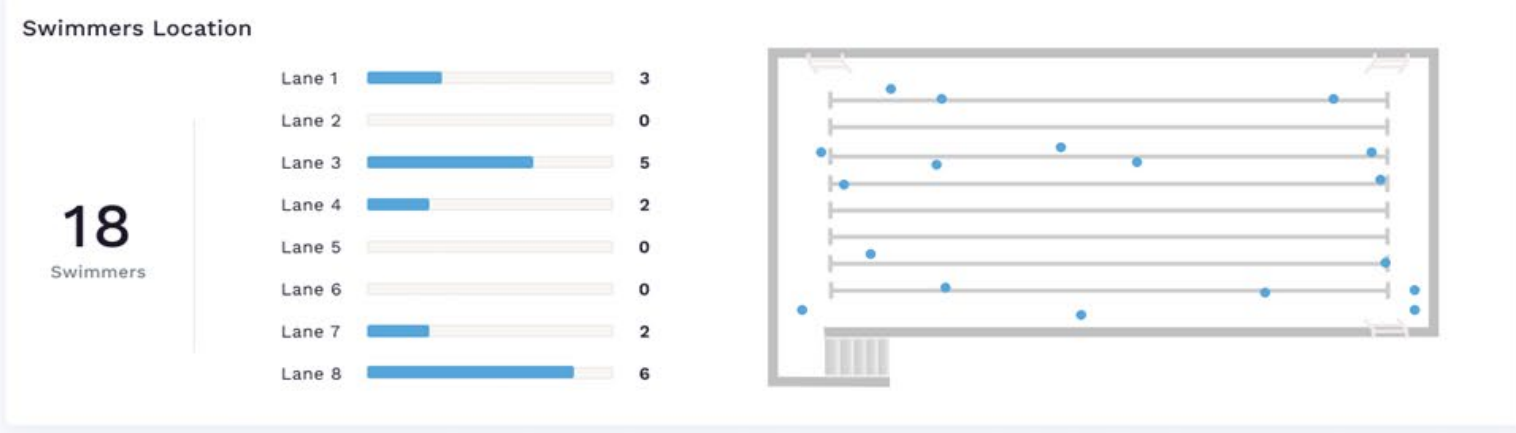
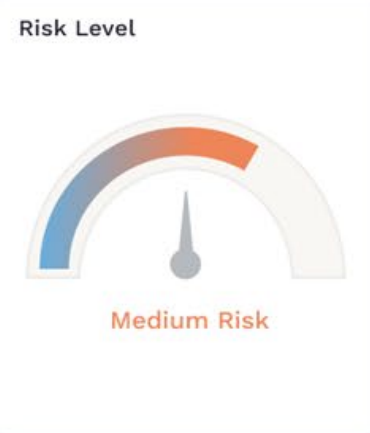


- **Orange alerts** – advisory (for example overcrowding)
- **Yellow alerts** – possible pool user in distress
- **Red alerts** – dangerous submersion



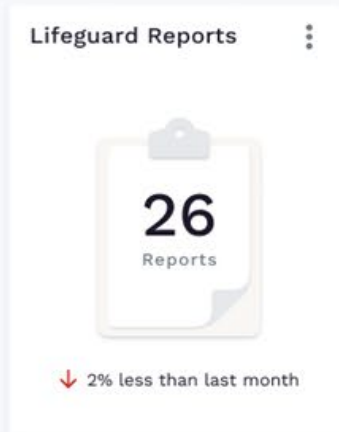
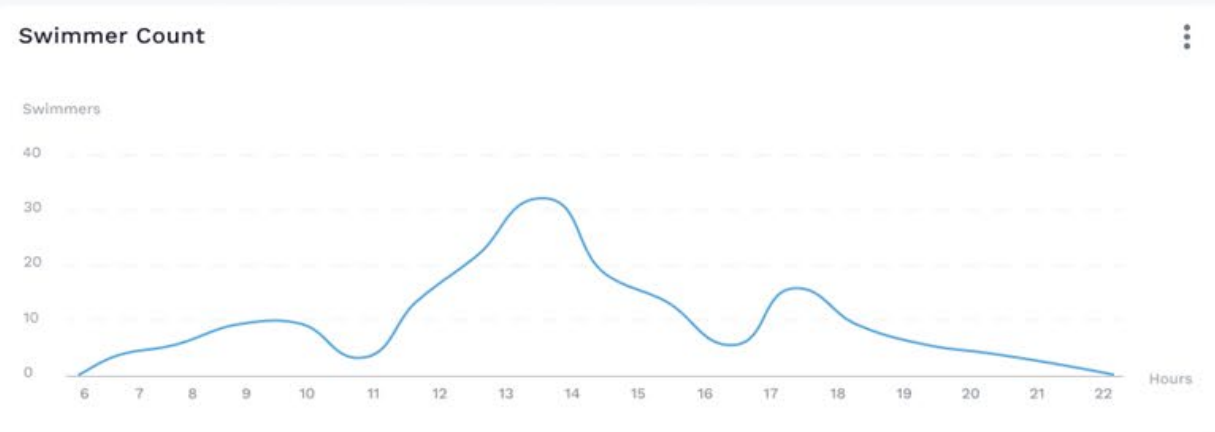
All Pools **Sport Pool** Teaching Pool Adventure Pool

Live



- #### Connected Watches
- AD:66
 - ED:16
 - E3:22
 - D2:A3

History





Teaching Indoor Pool

Swimmer Count

Day **Monday** Jan 29 | < >

● Jan 29 ● Last 4 Weeks average



Swimmers Heatmap



● Attention

🕒 08:18



● Attention



An underwater photograph of a swimming pool. The view is from below the water surface, looking down at the pool floor. The pool floor is tiled with light-colored square tiles, and a central lane line is marked with a strip of darker blue tiles. A drain is visible in the center of the lane line. The water is clear and blue, with lane lines and lane buoys visible in the distance. The lighting is bright, creating a clear view of the pool's interior.

Thank you for listening.
Any questions?