



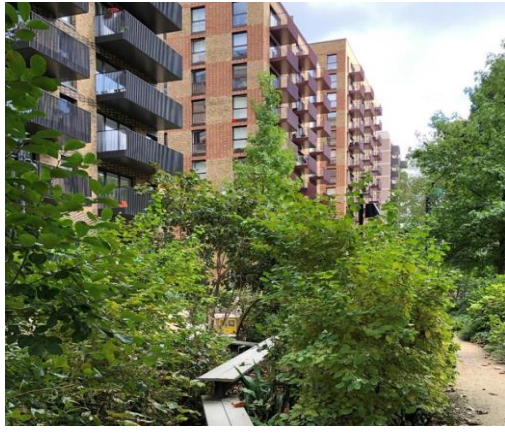
Bradford & South Pennines Nature Recovery Project

Dr Rachel Palfrey
Senior Project Manager



Vision Statement

“Thriving nature everywhere for everyone in Bradford and Calderdale..”



Drivers and Levers



Innovative projects
(Co-created and co-produced)



Strategic join up at a place-based level



Facilitate & convene



Communicate & influence



Advice and support

Three Key Aims



Improve quantity and quality of nature



Improve access, engagement
and action for nature
(Number and diversity)



Build strong partnerships
and local networks for
nature recovery

Aim 1: Improve Quality and Quantity of Nature



Declare 1st National Nature Reserve in West Yorkshire



Declare a complimentary series of Local Nature Reserves



Successful Landscape Recovery Scheme



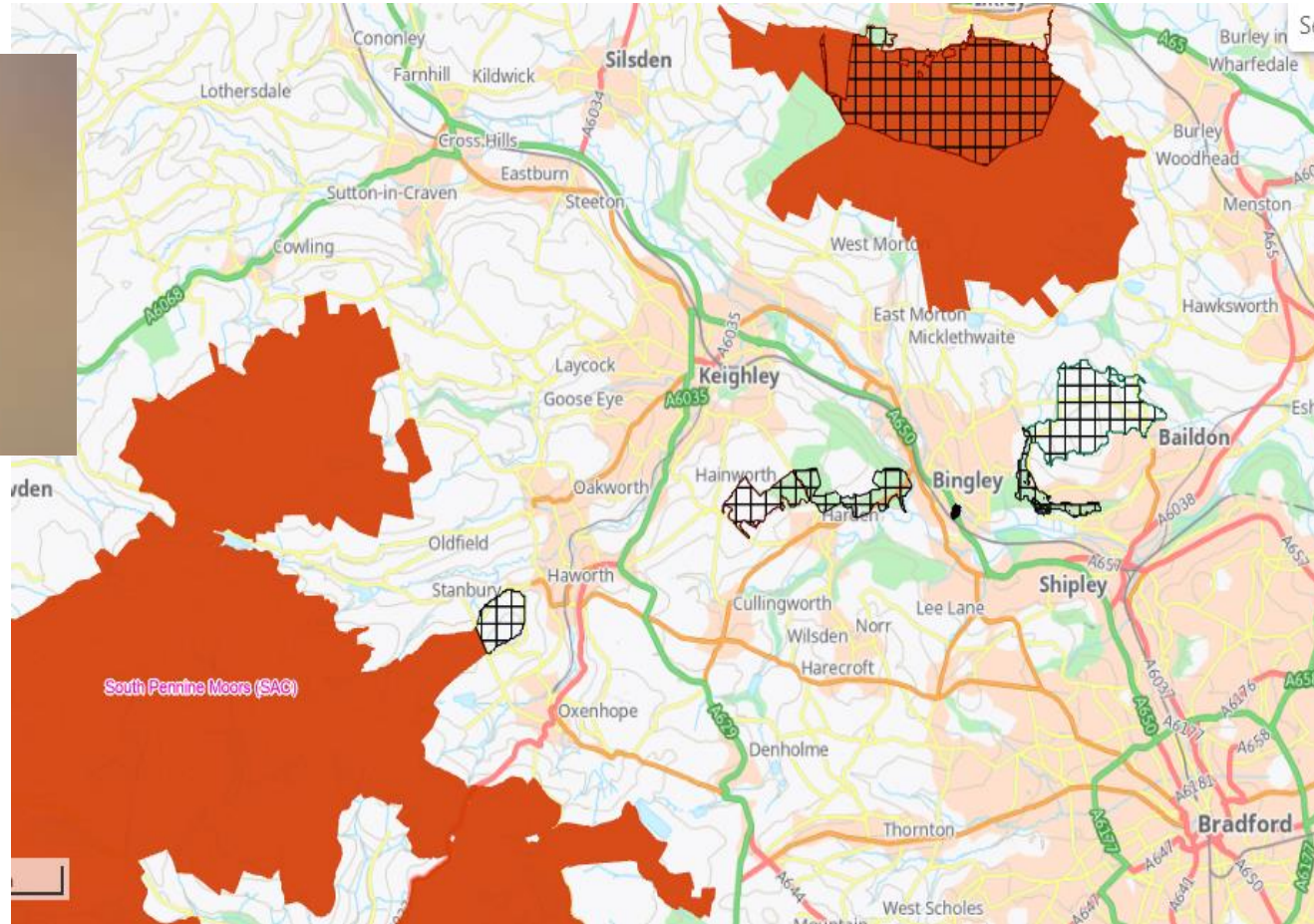
Develop 12 projects support species recovery /
reintroductions



Develop 5 projects targeted at improving air & water quality,
climate resilience & recreational disturbance

Aim 1: Improve Quality and Quantity of Nature

Bradford Pennine Gateway National Nature Reserve and 10 Local Nature Reserves



Aim 1: Improve Quality and Quantity of Nature

Horton Park

Redevelopment work at Horton Park for climate resilience, natural flood management and biodiversity



Tree
Planting

SUDS

Wildflower
planting

Pond
Improvements

Aim 1: Improve Quality and Quantity of Nature

Working with Bradford council to landscape central mosque – Bradford (match funded with mosque)

- Planting trees
- Shrubs
- Herbs
- Flowers



Co-designed with the community and setting up a maintenance group

Aim 1: Improve Quality and Quantity of Nature

Planting 2,500 trees at six schools and two community sites across Bradford and Keighley with Trees for Cities

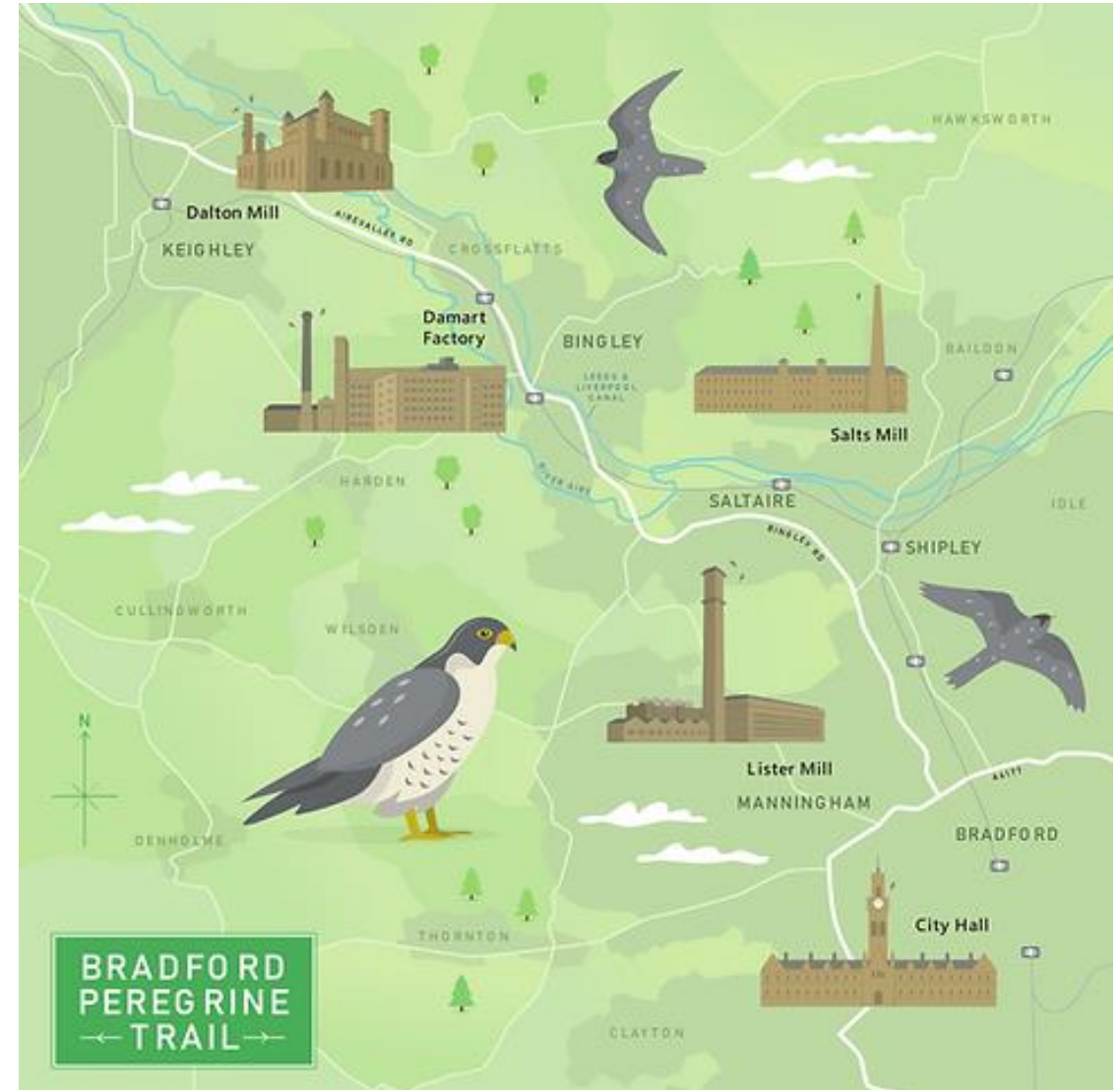
Victoria Primary school - Using council land to create a forest school and outdoor bicycle track



Aim 1: Improve Quality and Quantity of Nature

Bradford Peregrine Trail

- Bradford Council, Bradford Urban Wildlife Group
- Install nest boxes - 5 mills in BD district
- Interpretation boards, live web cam, other engagement events



Aim 1: Improve Quality and Quantity of Nature



Cut and collect machine for grassland management

Purchase and installation of 60 swift boxes to create swift streets



Aim 2: Improve people's access, engagement and action for nature



Work with Bradford Council to adopt GI standard S2, S3 and S5 as part of local plan and green infrastructure strategy by 2030



Develop 30 sites which implement examples of green infrastructure standards



Develop 20 projects which engage people with nature (e.g. Youth, Areas of Multiple Deprivation)



Support development of green community hubs across the district (e.g. Libraries, NHS sites, Mosques)

Aim 2: Improve people's access, engagement and action for nature

Explore ways we can empower youth to engage with nature in Bradford

Yorkshire Wildlife Trust (#TeamWilder)

Test and trial techniques most effective in empowering youth to drive forwards nature recovery where they live.

Multiple groups: White working class, 2nd / 3rd Generation South Asians, Migrants and Refugees, SEN



Aim 2: Improve people's access, engagement and action for nature

Nature Nuturelets with Better Place Bradford

Test and trial techniques most effective in helping expectant mothers and families with 0 – 3's to engage with nature

Factors for long term capacity building to engage in a variety of different green spaces

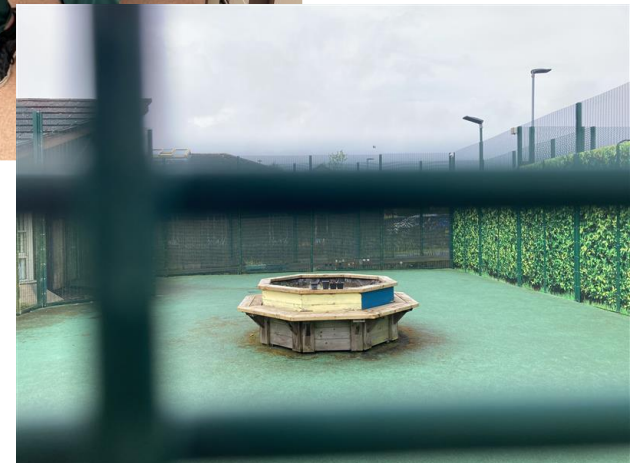


Aim 2: Improve people's access, engagement and action for nature

Nature therapy in psychiatric patient care

Bradford District Care NHS Foundation Trust

- Testing ways can embed nature therapy into healthcare plans
- Ways to get staff, volunteers and service users more engaged with nature
- How use NHS sites for nature recovery



Aim 2: Improve people's access, engagement and action for nature

Pathways to nature – revitalise old snickets to be trails to connect people to local wild spaces (**Street Space**)



Aim 2: Improve people's access, engagement and action for nature

Eco-sculpture park - First eco-sculpture park in Bradford (The Leap)





Over 300 plants and shrubs to be planted

Bird and Bat Boxes Installed – built by school children

5 large sculpture made from oak to be installed soon – designed with local people

People walking through nature and calm than heavily used junction including parents and children walking to and from school.

Over 400 residents included in the design and are now taking stewardship of the site doing litter picks etc



Aim 2: Improve people's access, engagement and action for nature

Green Community Hubs

- Culture Nature Project Manningham Library and Eccleshill Library
- Nature connection training for staff
- Nature based activities (e.g. arts and crafts, walking groups)
- Chalk walks to local green spaces
- Library refit with a nature theme – highlighting local parks



Aim 3: Build strong partnerships for nature recovery



Participate and take part in steering groups (e.g., LNRS, Calderdale Ecological Emergency Plan)



Provide support for partners to access public and private finance options to align nature restoration with land and water management approaches.



Communicate the work and success of the project and partnership

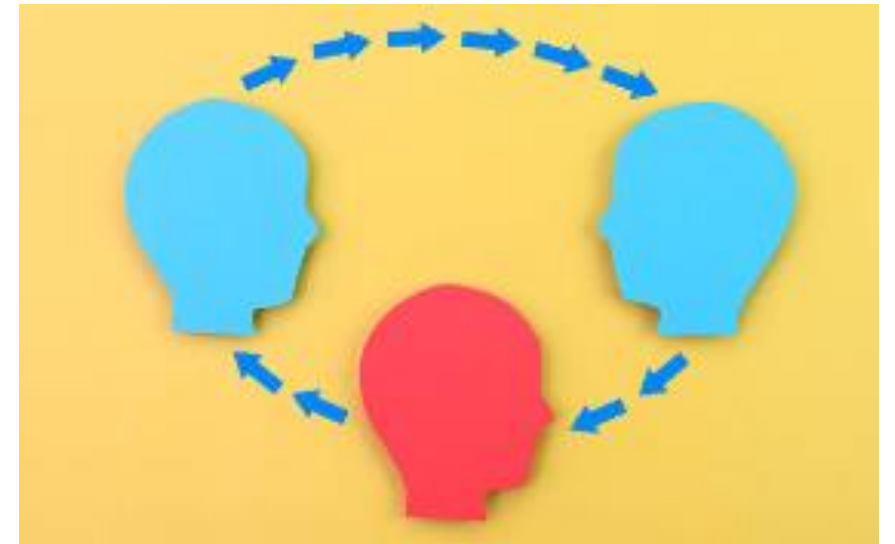


Support local networks through events

Aim 3: Build strong partnerships for nature recovery

Regional co-ordinator for nature recovery

- Understand your place – physical/social attributes and your partners
- Development of (hyper) local networks (Resource matching / swap shop)
- Cocreated, cheap and sustainable
- Some examples.....



Aim 3: Build strong partnerships for nature recovery

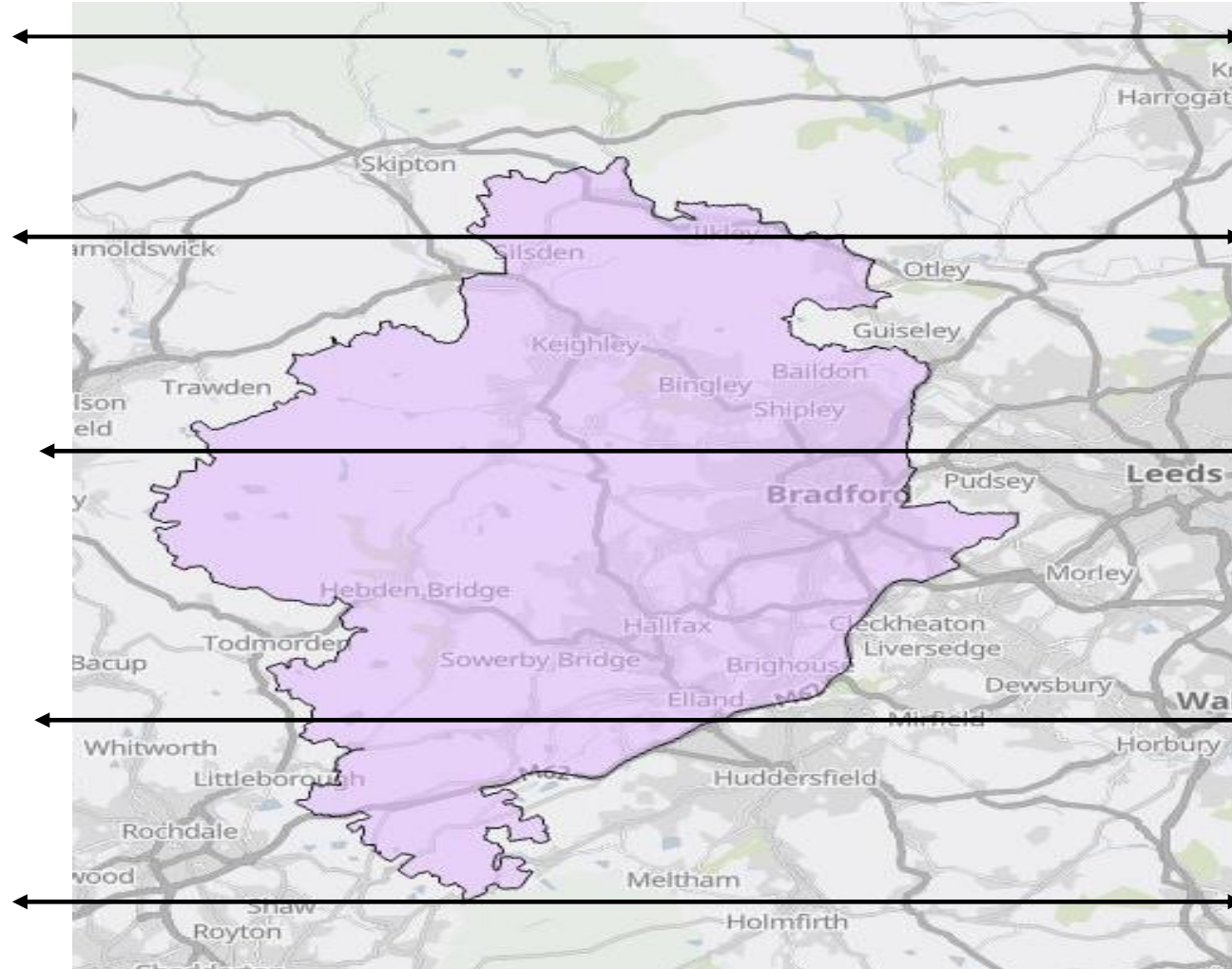
NHS want activities for service users

Keighley College needs students to help plan events / placements

Cons orgs need more data on wildlife

Bradford Peregrines want more people interested in birds of prey (webcam)

City of nature want a place to grow flowers



Tiffin sandwiches needs volunteers to manage their site

Cons orgs need more hands-on deck

NHS / Scouts and guides and other orgs can run a bio blitz

Library has users / a space for meetings and a TV

Mosque wants activities / has land / invest in social entrepreneurs

Aim 3: Build strong partnerships for nature recovery

- Nature & HOPE Conference
- 50 people from 30 organisations across nature recovery and health
- Creating a forum for our partners to work more collaboratively
- More collaboration days now happening



Aim 3: Build strong partnerships for nature recovery

Toolkit for mapping ecological and health data to find the best places for nature-based solutions that achieve human health improvements, nature recovery, and climate change adaptation

Office for Health Improvement and Disparities

Tools: maps, data and charts

SELECT INDICATORS

ALL HEALTH > T4 - Life Expectancy and Causes of Death (12)

- Deaths from all causes, all ages
- Deaths from all causes, under 75 years
- Deaths from all cancer, all ages
- Deaths from all cancer, under 75 years
- Deaths from circulatory disease, all ages
- Deaths from circulatory disease, under 75 years
- Deaths from coronary heart disease, all ages
- Deaths from stroke, all ages
- Deaths from respiratory diseases, all ages
- Deaths from causes considered preventable, under 75 years

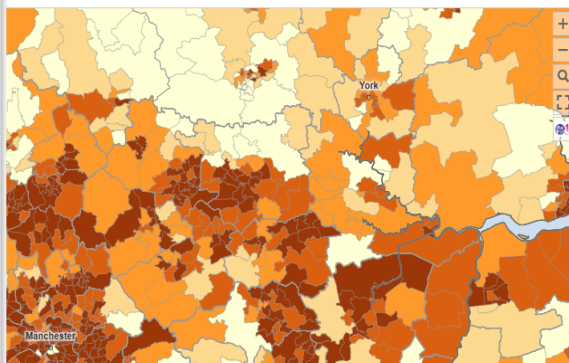
Filter by type

My indicators

Deaths from respiratory diseases, all ages

MAP TABLE SUMMARY

1 Deaths from respiratory diseases, all ages, Indirectly standardised ratio, 2016 to 2020 (Standardised mortality ratio (SMR)) ACTIONS



Ward 2021 (Electoral Best Fit)

7,008 Wards 2021

14.1 to 68.3 (1,349)

68.4 to 83.8 (1,348)

83.9 to 99.9 (1,356)

100.0 to 124.3 (1,467)

124.4 to 331.1 (1,476)

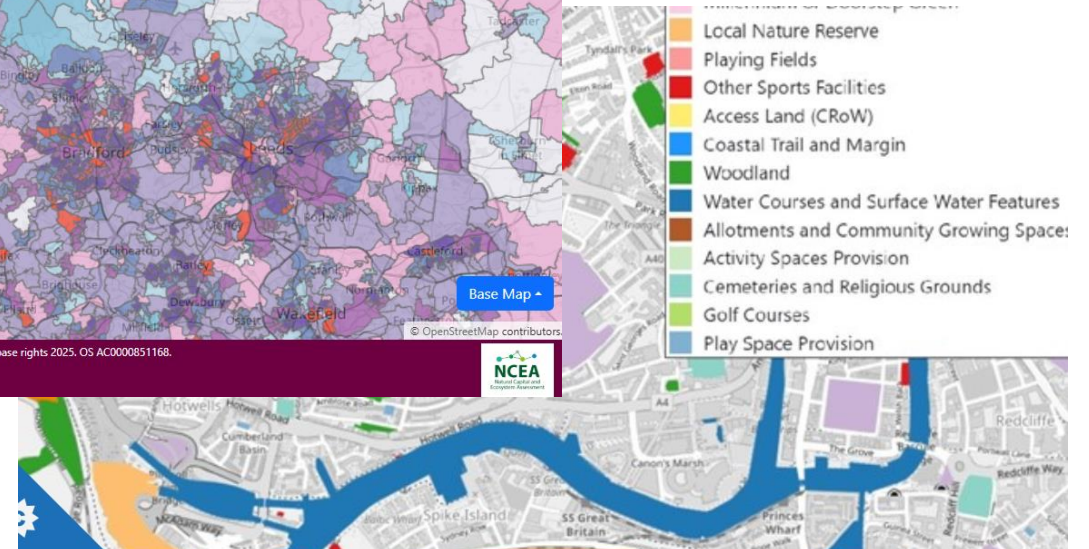
N/A (12)

England: 100.0 Standardised mortality ratio (SMR)

Rate

except where otherwise stated.

This site uses cookies to track your visits for statistical purposes. I agree I refuse To know more



Aim 3: Build strong partnerships for nature recovery

Directory of environmental & health organisations & Google Map

HOPE (Health and People and Planet Entwined) Directory							social media	
In Map	Emailed for	Organisation Name	Description (up to 100 words)	Base Location	Areas where work	Target Groups (Peop	Website	Facebook
es	X	Airedale & Bradford RSPB Local Group	Support the work of the RSPB in the local community and to involve people in the RSPB's activities. Monthly indoor meetings in Shipley from September to April and occasional nature walks in the local area. Offer free guided walks in the local area where experienced birdwatchers are happy to assist those just starting out on their bird-watching journey.	Kirkgate Centre, BD18	All	All	https://group.rspb.org.uk/airedaleandbradford/	https://www.facebook.com/BAiredaleAndBradforden_GB&rdi
es	approved	Addingham Civic Society Environment Group	Aim is to protect, enhance and restore the natural environment of Addingham and surrounding countryside. Sub groups: Wildlife Friendly Addingham - look after village green spaces, monitor birds, butterflies, collect and grow local wildflower species - practical conservation work includes planting seeds, plug plants, hedges and trees, managing the allotments, maintaining the green spaces, monitoring the becks and litter picking Zero Waste - focus on reducing waste, run a monthly pop-up refill shop, run an annual village Jumble Trail, has a team of Litter Pickers and an annual village Litter Pick Sustainable Water - focus on managing water wisely, a team of Beck Stewards who monitor litter and pollution in the becks, work with regional agencies to monitor and improve the condition of The Wharfe	Addingham, LS29	LS29	All	https://www.facebook.com/AddinghamEnvironment/?locale=en_GB	Home - Addingham Environment Group
es	responsive received and edited	African Caribbean Achievement Project (ACAP)	Promotes educational achievement, health improvements, cultural pride and empowerment for children, young people, and communities of African and Caribbean descent. Offers a range of arts and culture, health and wellbeing and education support services designed and run by and for local people. Walking group, IT skills class, Swimming Club, Therapeutic arts and crafts, yoga class and a gardening club. Also starting to organise a new neurodiversity project, which includes outdoor/matre elements. Weekly walking group for adults primarily from the African Caribbean community, (including four culturally	17 Claremont (Office) Elmsley Recreation Ground (Walking Group)	BD5, BD7	BAME, Children, Men, Women, Young Adults	https://acap.org.uk/	https://www.facebook.com/nearibbeanachievement?locale=en_GB
			Environmental charity dedicated to improving the river Aire and all her tributaries. River Aire Care is the headline project for riverside conservation volunteers - activities include habitat improvements, litter picking, footpath maintenance - Regular volunteer days are Thursday and Friday. Adult volunteer parties are typically six to twelve people and new volunteers are always welcome. Volunteers are not expected to have any skills apart from a basic level of fitness and a willingness to try new things.	Albion Mills Business				

Overview

Organisations

Activities

useful resources

+

:

Aim 3: Build strong partnerships for nature recovery

Directory & Google Map

The image shows a Google My Maps interface. On the left, a sidebar for the 'Bradford & South Pennines NRP' map is visible, showing 69 views and a list of categories with checkboxes:

- Health / (Guided) Walking / Spen...
- Activities - Arts, Crafts & Woodwork
- Children / Families / Play
- Community Action / Advocacy (e...
- Disabled or SEN

The main map area shows a satellite view of the Bradford region. A popup window for the 'Bradford Ornithological Group' is open, displaying the following information:

- Contact: shaun.radcliffe@btinternet.com
- Website: <https://www.bradfordbirding.org/>
- Group interested in birds within the Bradford District.
- Manage Stockbridge nature reserve in Keighley (wetland site)
- Coordinates: 53.87862, -1.89228

The map includes standard navigation controls like a search bar, zoom in/out buttons, and a compass. The 'Google My Maps' logo is visible at the bottom center of the map area.

Aim 3: Build strong partnerships for nature recovery

Funding / grant spreadsheet

Funding for Nature Recovery in

Quick overview	Name of grant	Amount (£)	Areas that can	Eligibility Criteria	What targeting	Deadline	Link to more info	Difficulty
Nature Recovery	Morley Glass Recycling	500	Yorkshire Wide	Local schools and charities across Yorkshire	Anything that improves the local environment (e.g. plants, planters, bug hotels, gardening equipment etc....)	None	https://www.morleyglass.co.uk/glass-recycling-leeds/	Very Easy
Nature recovery & skills	Inpower Business Solutions Foundation	3 Levels of funding up to 20,000 up to 40,000	50 mile radius of LS15 8ZA		<ol style="list-style-type: none"> 1. Nature Recovery 2. Champion local skills or employment 3. Promote social innovation 4. Support growth of responsible business 	None	https://inpowerbusinesssolutions.com/foundation#video	Easy
Community Gardens	Community Garden Grants	5,000	Nationwide		Community Gardens	Annual basis - Opens each September	https://ngs.org.uk/who-we-are/community-garden-grants/	Easy
Positive Community Action	Yorkshire Building Society - Foundation Grants	2,500	Nationwide		<ol style="list-style-type: none"> 1. Alleviate Poverty 2. Improving Health / Saving Lives 	None	Charitable Foundation Mortgages YBS	Unknown
Positive Community Action	Morrison's Foundation	10,000	Nationwide		The Morrison's Foundation supports registered charities making a positive difference in local communities across England, Scotland, and Wales.	None	https://www.morrisonfoundation.com/grant-funding-request/	Unknown
Facility / Ground Improvements	Screwfix Foundation	5,000	Nationwide		Support projects with improve, repair or maintain homes and community facilities used by those in need throughout the UK (have funded community gardens / outdoor spaces)	reviews dates in March, June, September and December	Screwfix Foundation Screwfix	
Positive Community Action	The Co-Operative Bank (Customer Donation Fund)	1,000	Nationwide	To be eligible to apply for the fund you must hold a Community Directplus account.	It encourages community groups to continue the valuable work they do in their local communities. Our Community Directplus customers can apply for a grant of up to £1,000 to support their special projects and fundraising activities.	Applications are open all year round. applications received from 1 October to 31 March are assessed in April. Applications received from 1 April to	https://www.co-operativebank.co.uk/business/community/customer-donation-fund/	Very Easy
					fund summer playschemes for disadvantaged children between the ages of			

Aim 3: Build strong partnerships for nature recovery

Basecamp – like teams but can invite external partners

The screenshot displays the Basecamp web interface. At the top, the navigation bar includes 'Home', 'Lineup', 'Pings', 'Hey!', 'Activity', 'My Stuff', and 'Find'. Below this is a row of user avatars with initials: AB, CB, ES, GS, NRN, JC, KB, KW, NK, SG, SB, SW, TPB, followed by '+ 1 just following'. The main content area is divided into several sections:

- Message Board:** Features a blue megaphone icon and the text 'Post announcements, pitch ideas, and keep discussions on-topic.' Below it is a 'Write a message' button.
- Funding Opportunities:** A list of items with circular icons and text:
 - ES Living Well Community Health Development Grants 2025/26
 - ES #GrowWelltoEatWell - Fruit Trees! Working with Fruit Works we are excited to offer
 - ES Rewilding Innovation Fund - deadline later in Jan TBC
 - ES Kew Gardens: Applications to the 2025 Grow Wild Community Programme now open! Apply
 - GS Bradford 2025 Creative Health Social Prescribing Awards
- Resources:** Two cards for 'Directory and Map' and 'HOPE conference and network'.
- Events:** A list of events:
 - SUN, MAR 16: Lovely Bug Ball, Bowling Park (Better Place)
 - SAT, MAY 24: Nature's Hope, Lister Park, City of Nature CIC
- Chat:** A vertical list of messages:
 - Just heard my colleague Kabeer who leads on incl...
 - NK Nicola Kelly 9:55am (with a smiley emoji)
 - Rachel Palfrey 1:45pm: Hi Everyone - I have just put the directory (that in...
 - Rachel Palfrey 9:28am: Hi All, Lovely to see you on Friday - as an FYI I hav...

Thank You

Rachel.palfrey@naturalengland.org.uk

