

APSE Northern Professional Practice Forum: The Many Faces of Regeneration

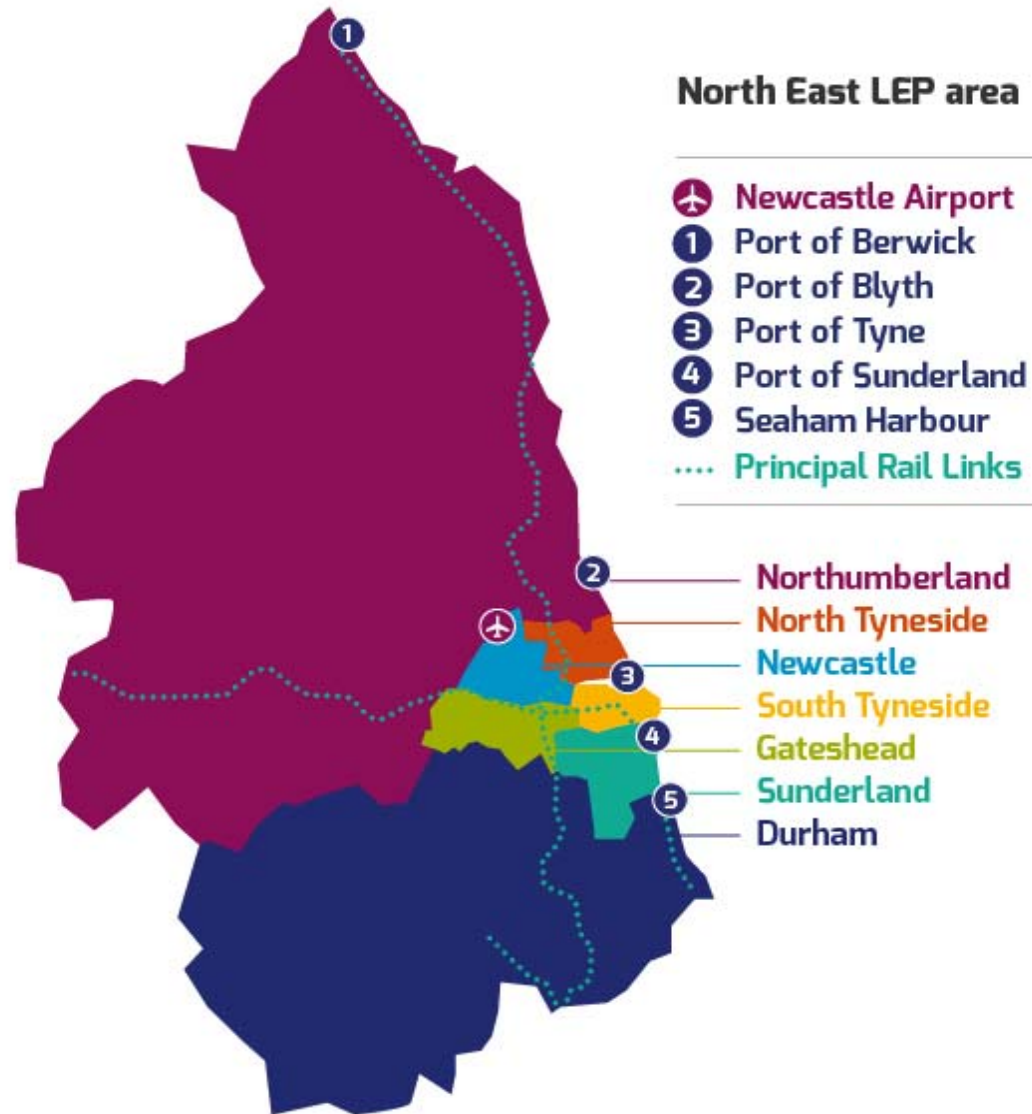


Ray Browning

Programme Manager, North
East LEP

Wednesday 21 March 2018 South Shields Town Hall

What is the North East LEP ?



1. North East Strategic Economic Plan



Strategic Economic Plan: Context

North East Economic Review Lord Adonis led team in 2014

Key messages :

- More productive and competitive region
- A more innovative and entrepreneurial culture
- Benefits of growth spread to all

Informed the preparation of the North East 'SEP'

Strategic Economic Plan: *More and Better Jobs*

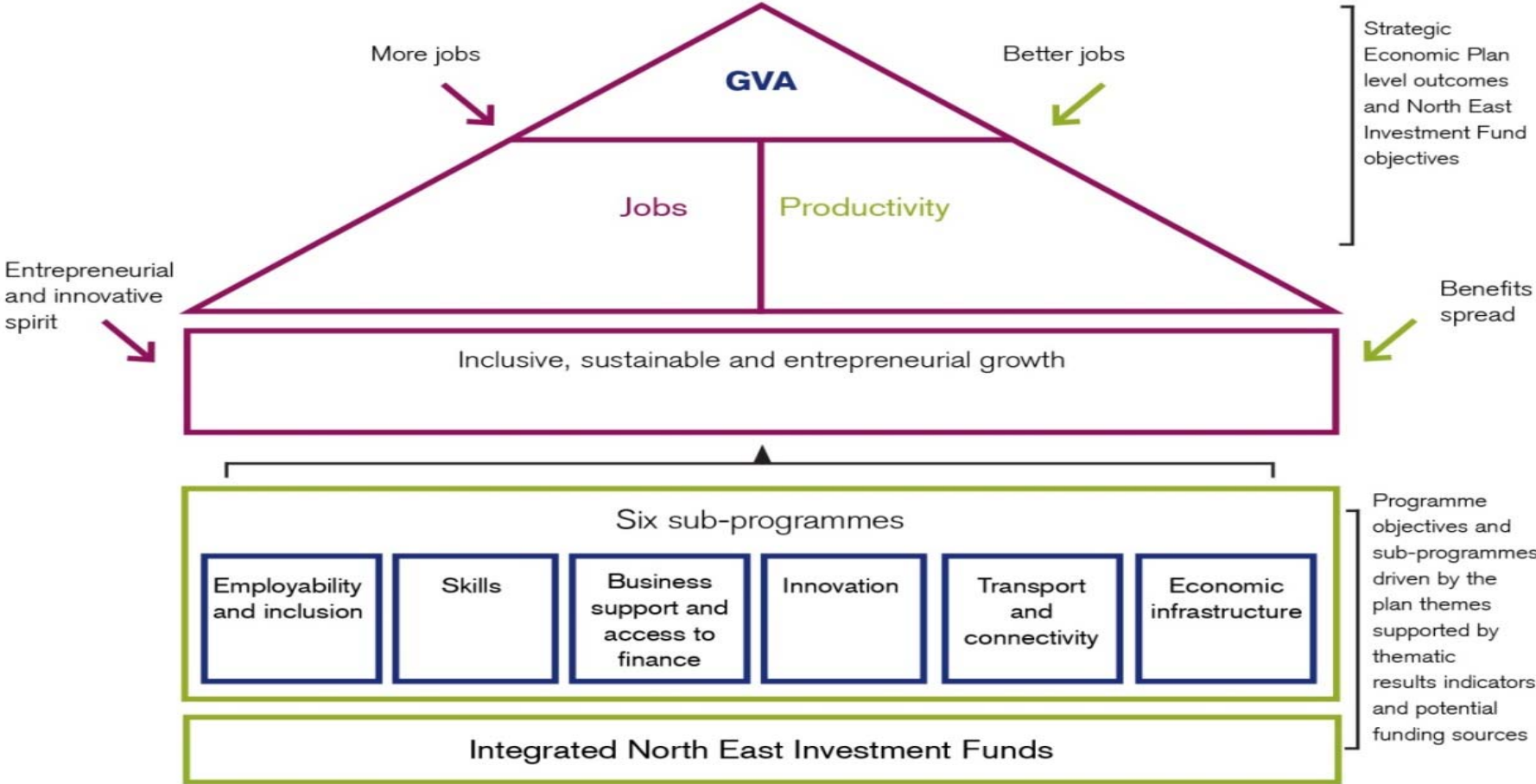
What is the Strategic Economic Plan?

10 year plan 2014 -2024

Growth Deal Round 1 projects included

Reviewed in 2017

The Strategic Economic Plan: KPIs and Programme themes



Performance of North East economy

GVA per head

North East LEP £19,658

England excl. London
£23,659

If performance matched England excluding London would have:

114,000 additional jobs

25,800 additional businesses

2. Partnership Working



Critical for Partnership working

- **Local freedoms and flexibilities from Government**
- **Partners view the SEP as their plan**
- **Partners can influence priorities and actions.**
- **LEP can draw on partner strengths and expertise**
- **Clear role and purpose – avoid mission creep**
- **Reliable engagement.**
- **Representative and high standards of governance**
- **Provide opportunities for networking – facilitation**
- **Good communications – LEP Bulletin, twitter etc.**

Operational Structure

LEP Board – supported by Advisory Boards

Business Growth Board

Employment and Skills Board

Innovation Board

Investment Board

The North East Strategic Economic Plan: Delivery Plan



Innovation

- An open innovation ecosystem - innovation leadership and brand, building networks and the supernetwork, skills and finance
- Investment in our innovation infrastructure – hubs, incubators, facilities, places, catapult centres
- Smart specialisation and grand challenges – building on strengths and addressing issues



Employability and Inclusion

- Supporting people with health conditions to find work
- Pathways for the most vulnerable and the over 50's
- Community level support for economic engagement
- Promotion of social innovation



Business growth and access to finance

- Scale Up North East: Increased density of high growth businesses through access to support and finance through the Growth Hub
- Strengthening inward investment and trade flows
- Leadership ensuring the North East can respond to economic change.



Economic assets and infrastructure

- Growth focused Local Plans in our 7 local authority areas delivering sites for jobs, investment and housing
- A pipeline of key projects for investment
- Working together on key projects and developing the duty to co-operate
- A successful enterprise zone programme.



Skills

- North East Ambition – UK demonstrator of outstanding career guidance
- Excellent technical and professional education
- Strengthening partnerships between education and business to match graduates and quality jobs
- Improving schools and maintaining the over 50's



Connectivity

- Developing and implementing the regional transport plan
- Improving local transport and digital connectivity to ensure mobility of people, services and goods
- Continuing to build national and international connectivity
- Underpinning innovation through our transport and digital systems – eg 5G Test bed, Mobility as a service, low carbon and autonomous transport.



@northeastlep

#moreandbetterjobs

www.slido.com event code #NELEP

Sub Boards - Engage partners from public and private sectors who:

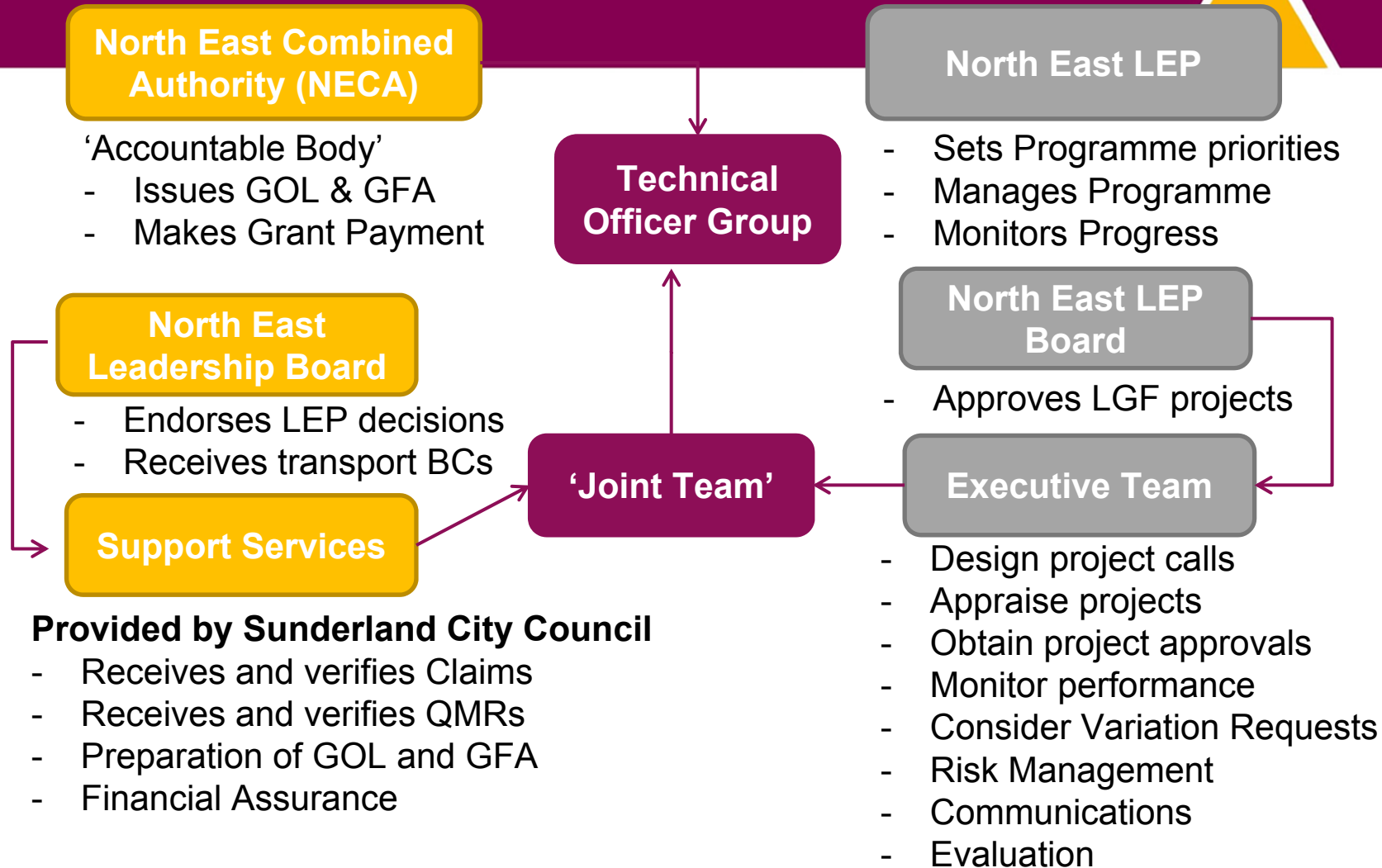
Advise on relevant policy and strategy issues

Share knowledge

Help shape local actions and inform Board decisions

Monitor progress against delivery plans

Partner support to Local Growth Fund Programme



Life Sciences Leadership Group

Why Life Sciences as an area of focus for the NE?

- Large GVA and employment footprint
- Major manufacturing and local research and development capabilities
- Extensive NHS footprint with excellent research record

Leadership Group

Peter Simpson, NELEP Innovation Board & N8

Geoff Davison, Bionow

Emma Banks, Datatrial

Nicola Wesley, NENC AHSN

Sarah Hart, RTC

Arun Harish, CPI

Tim Hammond, Durham University

Ben Fisher, Newcastle University

Richard Baker, NELEP

Philip Aldridge, NEPIC

Life Sciences Group brief : to determine sector focus and priorities

- Assessed current capabilities and capacities
- Identified strengths and gaps
- Consulted regionally with all stakeholders
- Identified opportunities to advance the sector
- Supported by recently recruited LEP Health and Life Sciences sector lead

bionow.

N8
Research Partnership

cpi

repic

Datatrial

North East
Local Enterprise Partnership

Newcastle
University

Durham
University

RTC
NORTH

ACADEMIC HEALTH
SCIENCE NETWORK
NORTH EAST AND NORTH CENTRAL

@northeastlep

#moreandbetterjobs

www.slido.com event code #NELEP

North East
Local Enterprise Partnership



3. Inclusive Economic Growth



Employment and Skills initiatives

North East Ambition

Education Challenge

Excellence in Technical and Professional Education

Higher Education

50+ - fuller working lives

North East Ambition

Careers Education Information Advice and Guidance nationally
Good CEIAG is critical for social mobility

Piloted and rolled out the Good Careers Guidance benchmarks (Gatsby) with over 100 secondary schools and all colleges working towards achieving 8 benchmarks

Benchmarks are central to Careers Strategy and are now statutory. The North East is providing support to the national roll-out.

North East Ambition– Enterprise Advisors

Senior business leaders– working with senior teams in schools



@northeastlep

#moreandbetterjobs

www.slido.com event code #NELEP

North East
Local Enterprise Partnership



4. Strategic and project level success



Projects delivered through direct Support

The LEP manages three capital funds

Local Growth Fund (grant)

North East Investment Fund

Enterprise Zone Fund

Local Growth Fund

Secured £270m

Portfolio of 57 projects

Create 17,000 jobs by 2025



Hope St Xchange, Sunderland



Life Science Incubator, Newcastle



National Formulation Centre, Durham



@northeastlep

#moreandbetterjobs

www.slido.com event code #NELEP

North East Investment Fund

Revolving Loan Fund - £55m

Invested in 26 projects to date

Varied investment portfolio

Focus on strategic sites and creating jobs



Stephenson Quarter, Newcastle



West Chirton Industrial Estate, North Shields



@northeastlep

#moreandbetterjobs

www.slido.com event code #NELEP

North East
Local Enterprise Partnership



Enterprise Zone Fund

21 site, circa 295ha

Financial incentives to businesses

Business rate income invested in infrastructure

Circa £400m over 25 year life



International Advanced Manufacturing Park (IAMP), Sunderland/South Tyneside



North Bank of Tyne (Neptune pictured), Newcastle/North Tyneside



@northeastlep

#moreandbetterjobs

www.slido.com event code #NELEP

North East
Local Enterprise Partnership



Other funding we influence

European Funding - £437m

North East Fund (JEREMIE 2) - £120m

North East Property Fund - £10m

Emerging UK Shared Prosperity Fund

Areas of progress since 2014

Increase in employment – especially in ‘better jobs’

Increase in employment rate and economic activity rates

Improving qualifications profile

Business base is growing and becoming more dynamic

Success in securing foreign direct investment

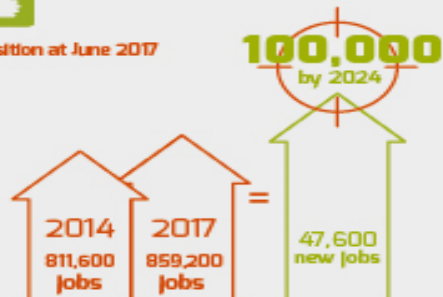
Housing stock increasing and 21 Enterprise Zone sites launched

North East Strategic Economic Plan: Key economic indicators – progress 2014 - 2017

Target Increase the number of jobs in the North East economy by 100,000 by 2024



Position at June 2017



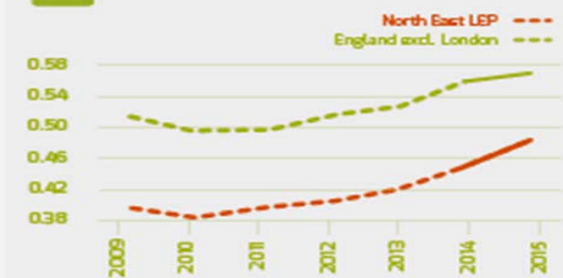
Target 70% of all jobs created from 2014 will be better jobs



Reduce the gap in private sector employment density
Target 50% reduction in gap by 2024



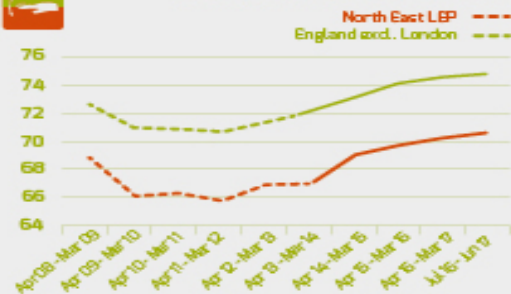
Position at 2015: 16.2% reduction



Close the gap in the employment rate for people aged 16-64
Target 100% reduction in gap by 2024



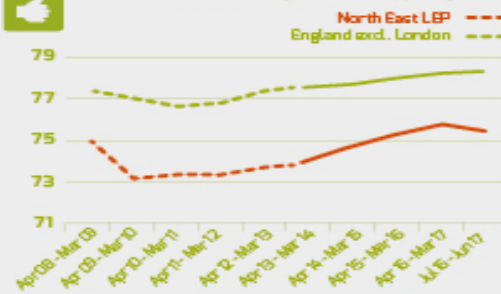
Position at June 2017: 21% reduction



Reduce the gap in economic activity for people aged 16-64
Target 50% reduction in gap by 2024



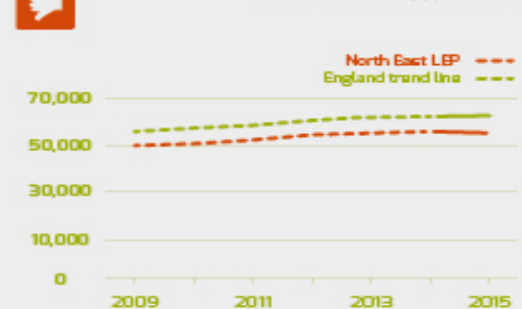
Position at June 2017: 21% reduction



Reduce the gap in GVA per full time equivalent
Target 50% reduction in gap by 2024



Position at 2015: 9% increase



@northeastlep

#moreandbetterjobs

www.slido.com event code #NELEP

North East Growth Hub



North East
Growth Hub



An online platform providing a single point of access for business information, advice and finance for growth



**North East
Growth Hub**

Provides content

Promote events

Business support & finance programmes

800 referrals per month



Scaleup

Aims to grow North East Scaleups 50% by 2024

Businesses with high growth potential - focus on smart spec. areas

Delivery partner RTC - using LGF and ERDF to offer financial support, peer mentoring, digital technology support.

Growth Hub Live Events



Live

Taking leadership to the next level, with
Chas Howes

former CFO of SuperGroup

07 DECEMBER AT SAGE GATESHEAD



Live

Finance that
Function, with
Giles Andrews

26 APRIL 2018 AT NEWCASTLE
MARRIOT, GOSFORTH PARK



Live

Increase your sales
using insight, with
Christian Howes

8 JUNE 2018
CROWNE PLAZA, NEWCASTLE



SEP / Funding Performance monitoring

Reports to LEP Board and publish an Annual Review

Report to NECA Scrutiny Committee

Quarterly KPI data submission to Government

Annual Conversation with Government 'Good' rating

Looking Ahead

National LEP review - to strengthen and set out roles / KPIs

Local Industrial Strategies - supporting national strategy

Shared Prosperity Fund - Long-term, flexible and devolved ?

MCA for North of Tyne - new resources to support SEP delivery.

SEP and Funding Programmes - evaluation plan implementation

www.nelep.co.uk

 @northeastlep  North East Local Enterprise Partnership