



# Speed dating: Getting your tenants in new homes fast!

Ray Noble – WElink Technical Advisor

- APSE Consultant



# The Partnership



## a. VISION AND TECHNOLOGY

High tech construction company that has developed a complete solution to deliver high quality, low-carbon, multi-family modular homes at an affordable price



## b. ENERGY INTEGRATION

Multinational firm specializing in renewable energy. Extensive experience in solar project design and development.



## c. SUPPLY CHAIN INDUSTRIALIZATION & FINANCING

China State owned, Fortune 500 Industrial group with over 500+ factories deployed globally and one of largest building material suppliers.



# Sustainable Construction System

- No Concrete, No Waste, No Water in construction



50% RECYCLED MATERIALS

ZERO WASTE

NO WET COSTRUCTION

ONLY 80% CO2 EMISSIONS

EARTHQUAKE RESISTANT STRUCTURE

ENERGY EFFICIENT

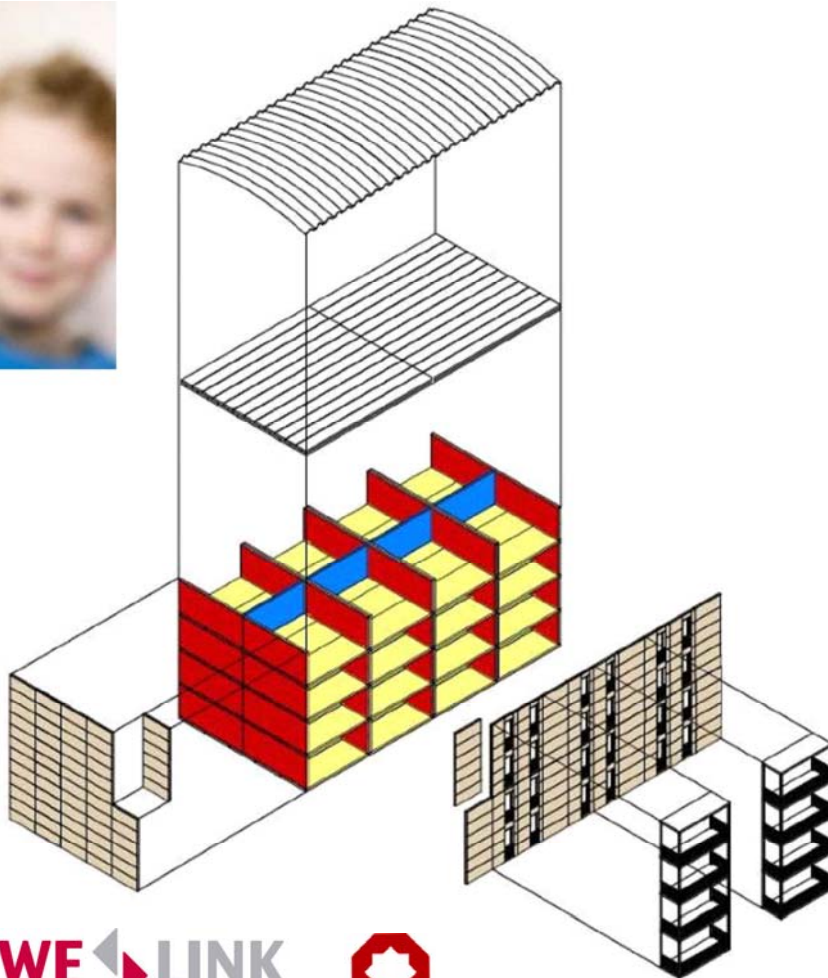
INTERNATIONAL COMPATIBLE

SIMPLE LOGISTICS

ADAPTABLE TO LOCAL REQUIREMENTS



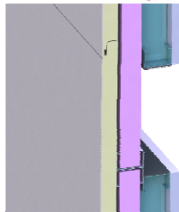
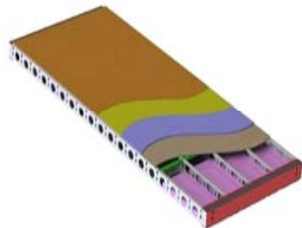
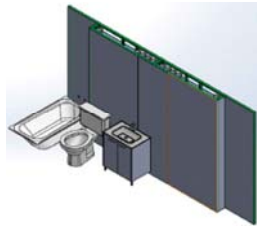
# Modular Construction



- Just like Lego -**
- a. do not consume water in its process.**
  - b. greatly reduces energy consumption**
  - c. significantly reduces co2 emissions (because it optimizes the transport)**
  - d. safe system for workers (minimizing accidents)**
  - e. increased thermal and acoustic insulation**
  - f. built using recycled materials**

**WE DON'T BUILD...WE ASSEMBLE!**

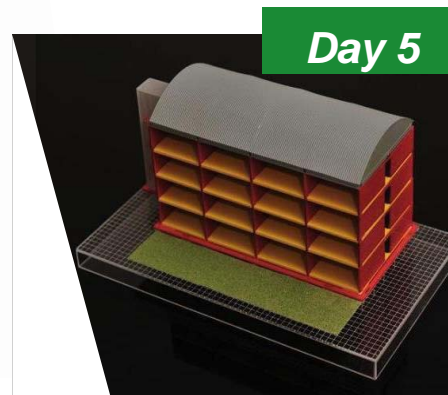
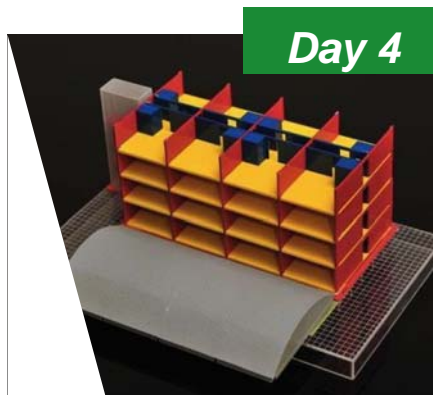
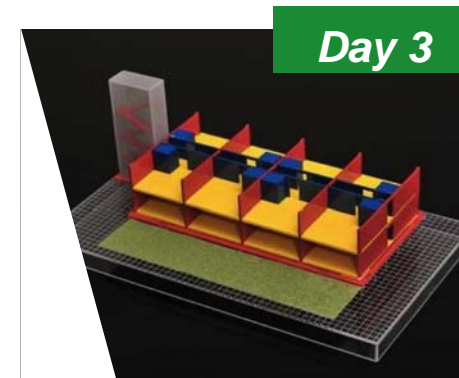
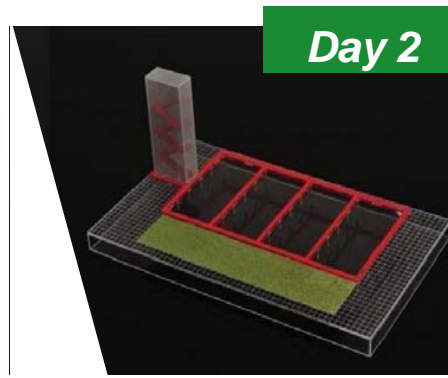
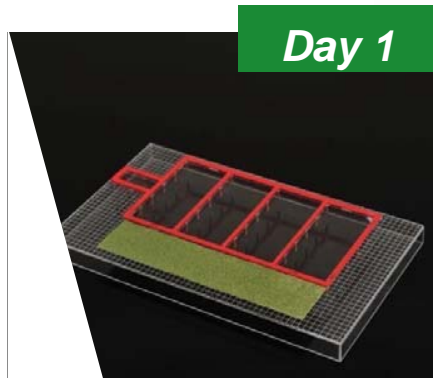
# Flat Pack Components



- a. Light weight steel framing structural panels
- b. Mineral insulation
- c. Gypsum board plus fire rated board plus acoustic treatment
- d. OSB board
- e. Interior finishing
- f. Insulated exterior sandwich with various types of finish
- g. PVC windows
- h. Fire rated doors

- **HIGH QUALITY FINISHES**
- **FAST ASSEMBLY**

# Rapid Construction



# Lightweight Advantages





# Delivered to site





# Simple to Assemble

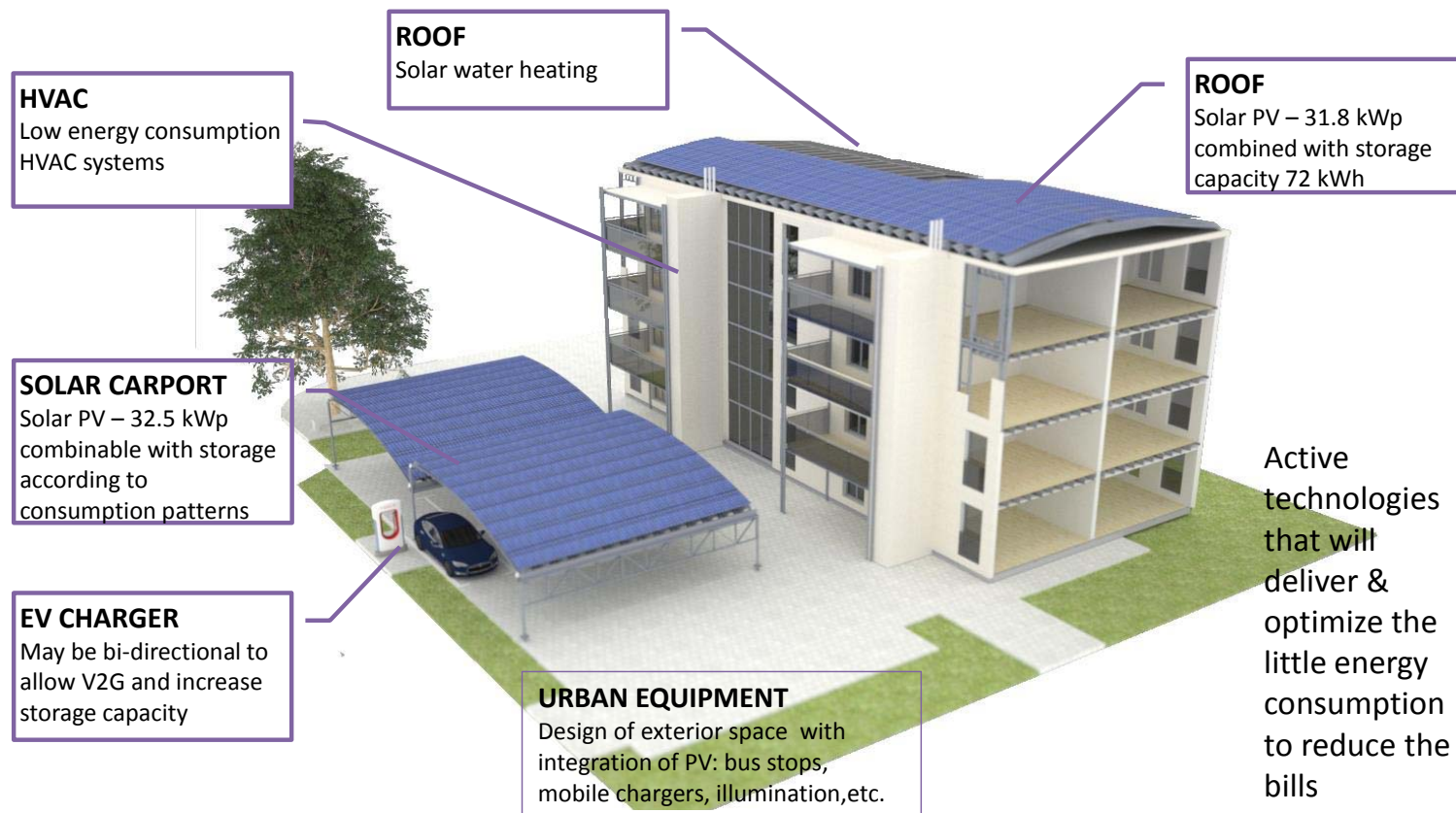


# High Quality





# Low running costs





# Made in the UK

- Factory in Gloucester
- Showhouse being built at the Science and Technology Park in Berkeley



# What do you need to provide?

- NOTHING other than LAND - preferably shovel ready
- WElink provide all of the funding
- WElink develop the Planning Drawings and agree the Façade and Roof profiles to be used
- WElink manage the assembly of the Houses
- WElink hand over the Houses
- Apartments can be:-
- For Sale - For Rent - and be Totally Affordable

# We are Building the Future

- **Thank You**