



Llywodraeth Cymru
Welsh Government

www.cymru.gov.uk

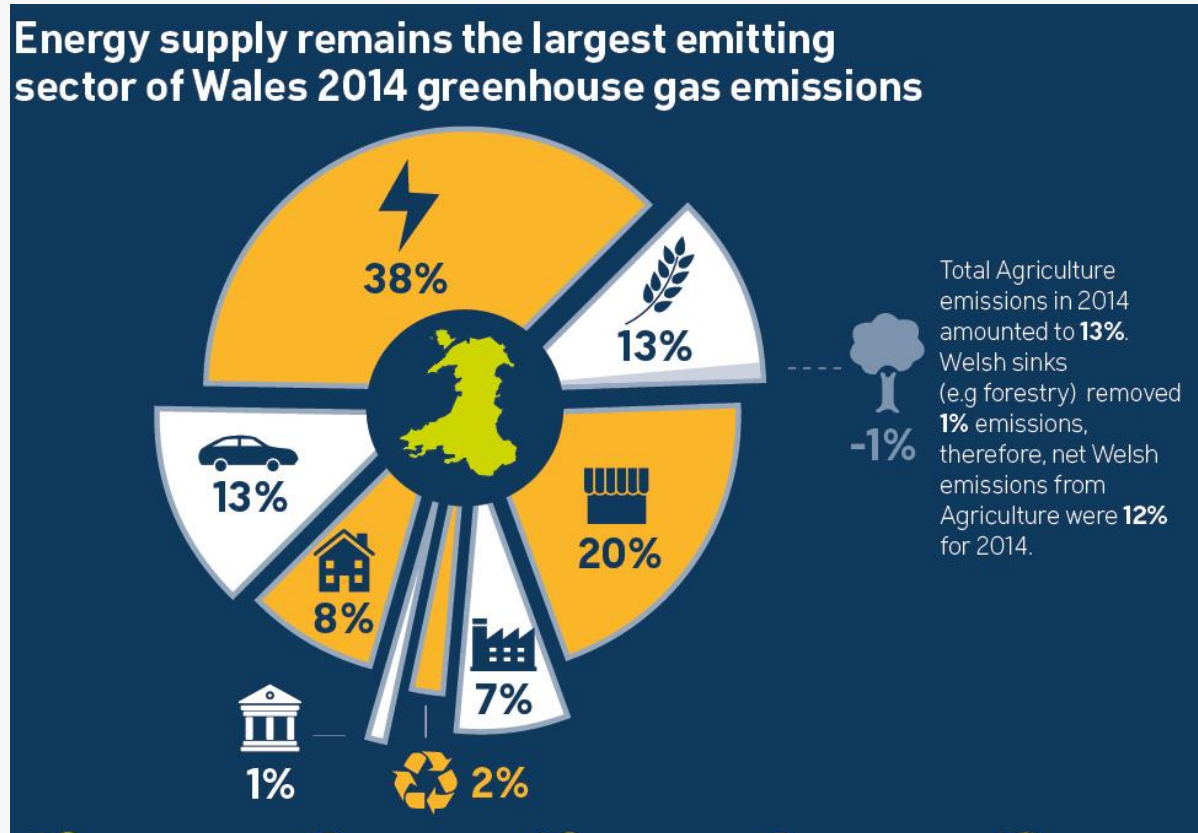
Welsh Government

INCREASING THE UPTAKE OF ULEVs IN WALES

Rhodri Griffiths

Head of Transport Policy, Planning and Partnership &
Chief Regional Officer, Mid and Southwest Wales

The Decarbonisation Agenda





The Decarbonisation Agenda

Although transport accounts for only 13% of emissions in Wales, compared to the UK average of 25%, decarbonisation of the sector is key if we are to meet our Environment Act (Wales) 2015 duty to deliver 80% carbon reductions by 2050 and in delivering on our obligations set out in the Air Quality Standards (Wales) Regulations 2010.

Through a transition to ULEVs, there is an opportunity to deliver against our wider wellbeing goals and objectives, in mitigating against climate change, tackling air quality and maximising the opportunities that the transition could represent for economic growth.

UK Support

UK Government has a number of grant schemes to incentivise the uptake of ULEVs which extend to Wales. They amount to around £500 million in total and include

- Plug-In Car and Plug-In Van Grant which provides up to £5,000 towards the purchase of an electric car and £8,000 for a van
- Electric Vehicle Home-charge Scheme, which provides a maximum of £500 grant towards cost of home chargers
- Workplace Charging Scheme which applies to public and private employers and is for charging by employees and fleets, with a £300 pound grant available for each charge point installed at workplaces, up to a maximum of 20 per site
- On-street Residential Charge-point Scheme, which supports local authorities with 75% of the capital costs of procuring and installing on-street residential charge points and an associated dedicated parking bay
- Low Emission Bus Scheme, administered by OLEV on a competitive bidding basis, has been available to commissioning local authorities and bus operators in England and Wales

Welsh Government Policies and Measures

- Revising Wales Transport Strategy to support decarbonisation
- Supporting use of EU and UK reserved levers to transition to ULEVs as soon as possible e.g. vehicle standards, fiscal measures
- Working cross-portfolio to maximise use of WG levers e.g. through conditioning capital grant programmes, park and ride programmes
- Installing charge points at WG offices and look to install in wider WG estate – CADW and Trading Estate
- Building in charge points wherever feasible when designing new roads/major road improvements
- Reflecting ULEV infrastructure within revised Planning Policy Wales
- Facilitating applications from Wales to UK funding streams e.g. through WG Bus Co-ordinators, potential OLEV roadshows in Wales
- Exploring using existing WG funding schemes to increase uptake e.g. Local Transport Grant, Rural Development
- Committing £2million to help increase uptake of electric vehicles by providing a network of publicly accessible charging points across the Wales

We are currently scoping the deployment of the £2 million new funding and will be engaging with a range of partners, including local authorities. The focus will be on providing infrastructure in suitable locations on or near the strategic road network to help alleviate range anxiety relating to longer through journeys, as well as key destination sites.

TRUNK ROAD NETWORK

