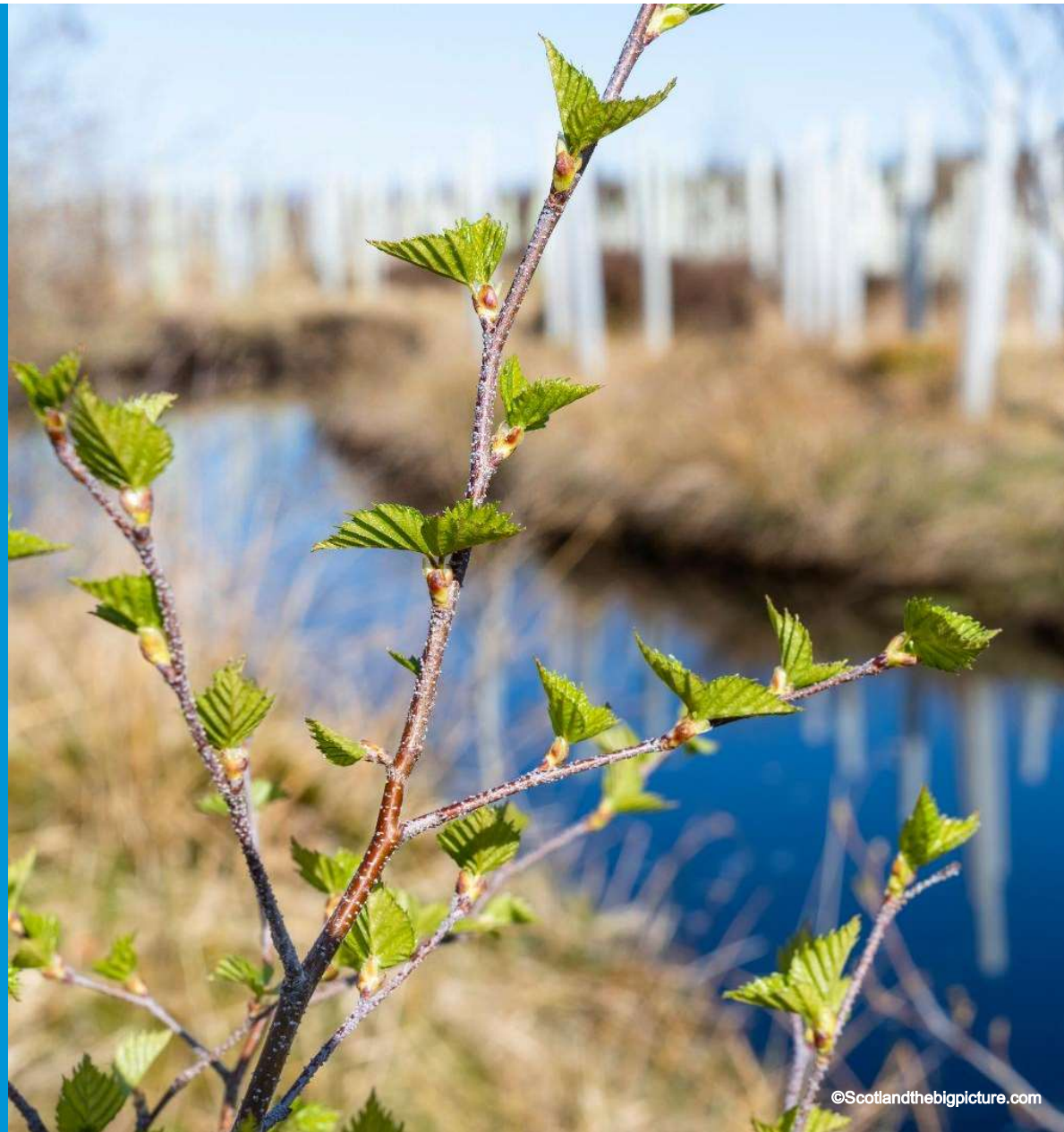


# RIVERWOODS

A blueprint for river woodland restoration

Nicole Still  
Riverwoods Project Manager  
*Scottish Wildlife Trust*



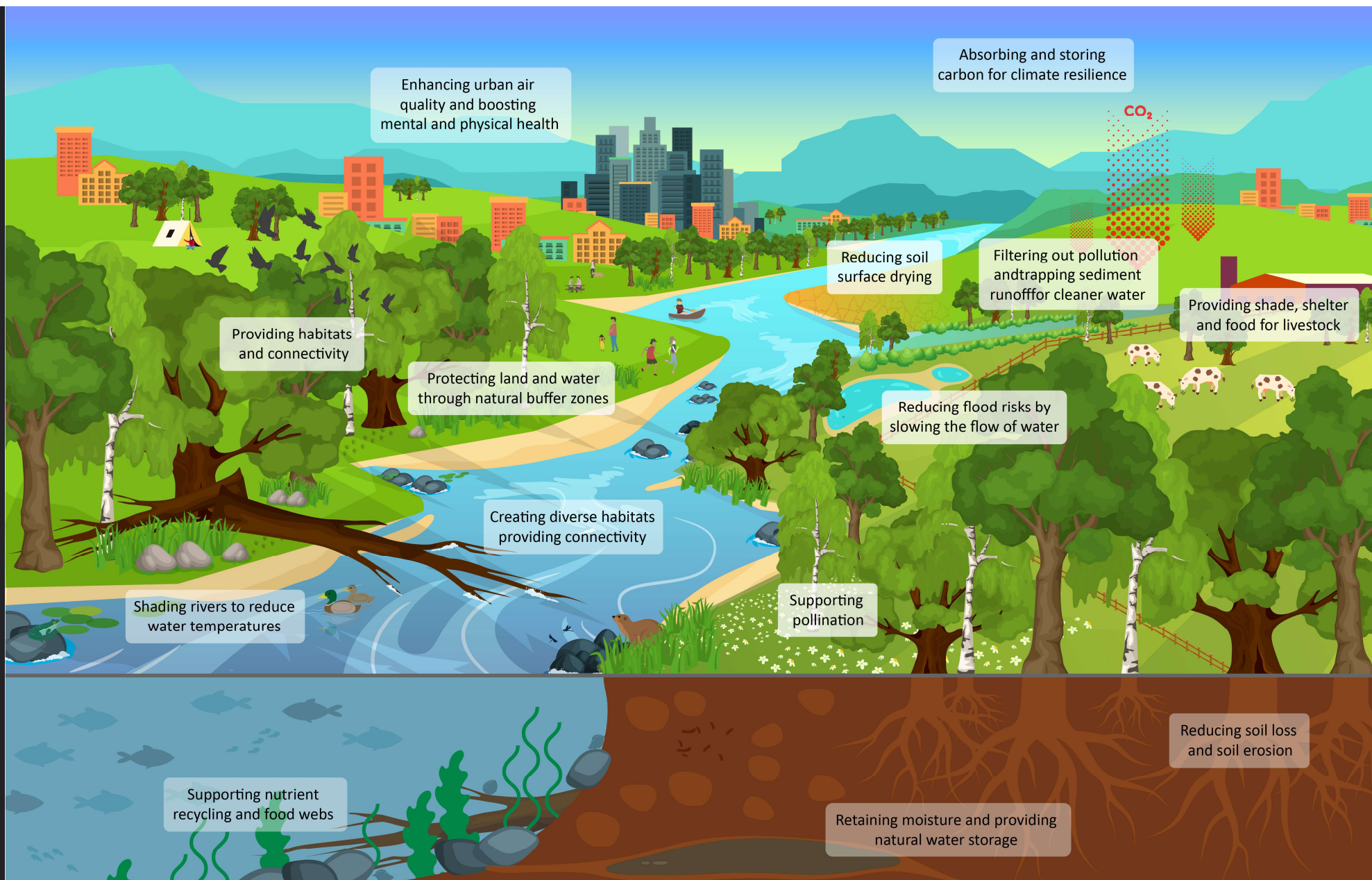
©Scotlandthebigpicture.com

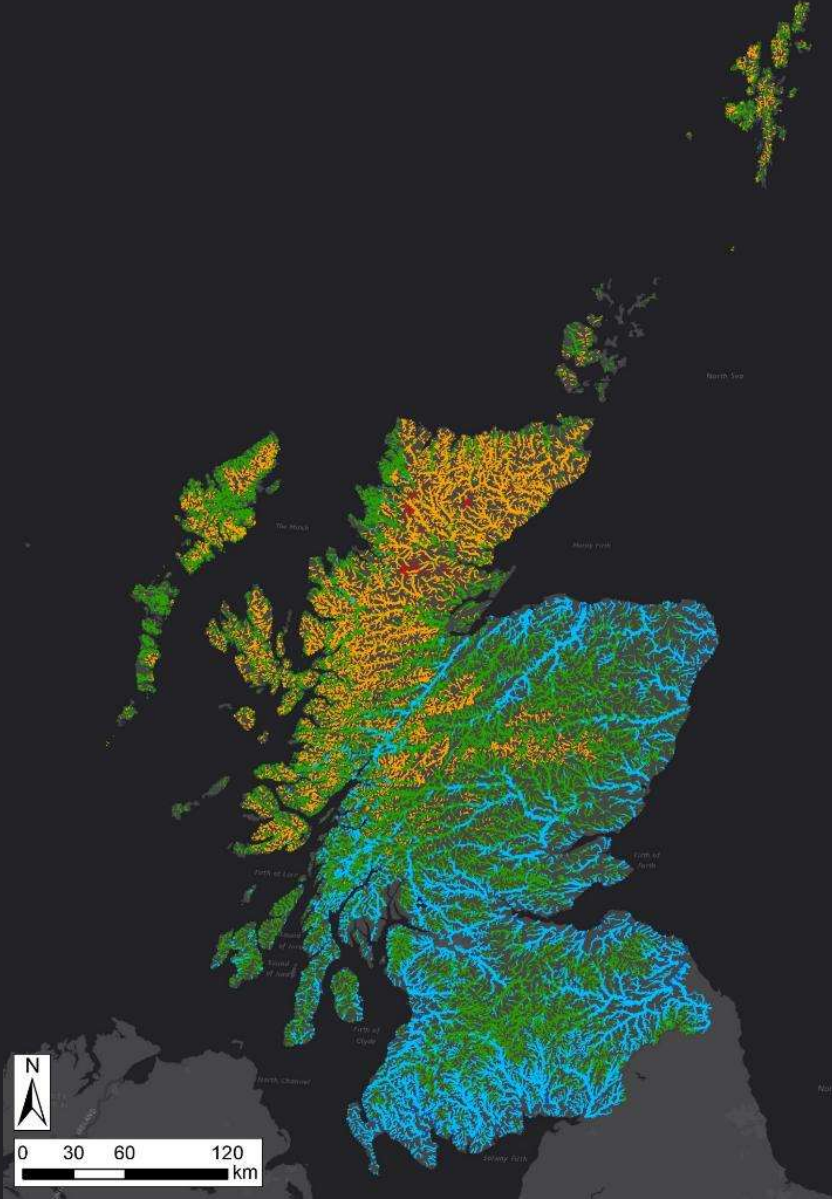
## What are riverwoods?

- Riparian woodland
- Floodplain woodland
- Gorge woodland
- Man-made riparian woodland buffer strips





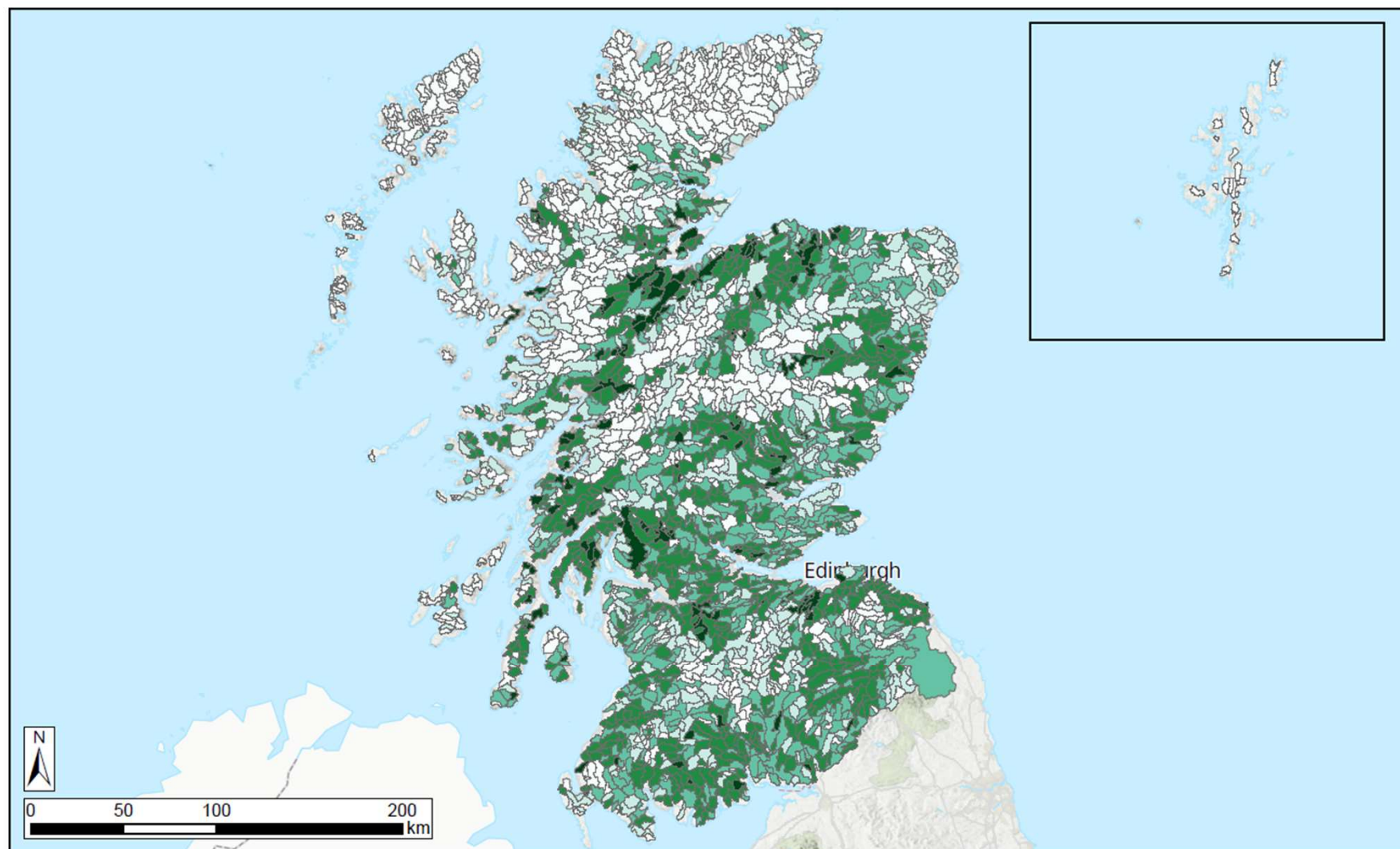




Scotland has over **125,000km** of rivers and burns

*Only 13% of riparian woodlands are in good condition*





**Scottish  
Wildlife  
Trust**

Scottish Wildlife Trust  
Harbourside House  
110 Commercial Street  
Edinburgh, EH6 6NF

09/05/2024

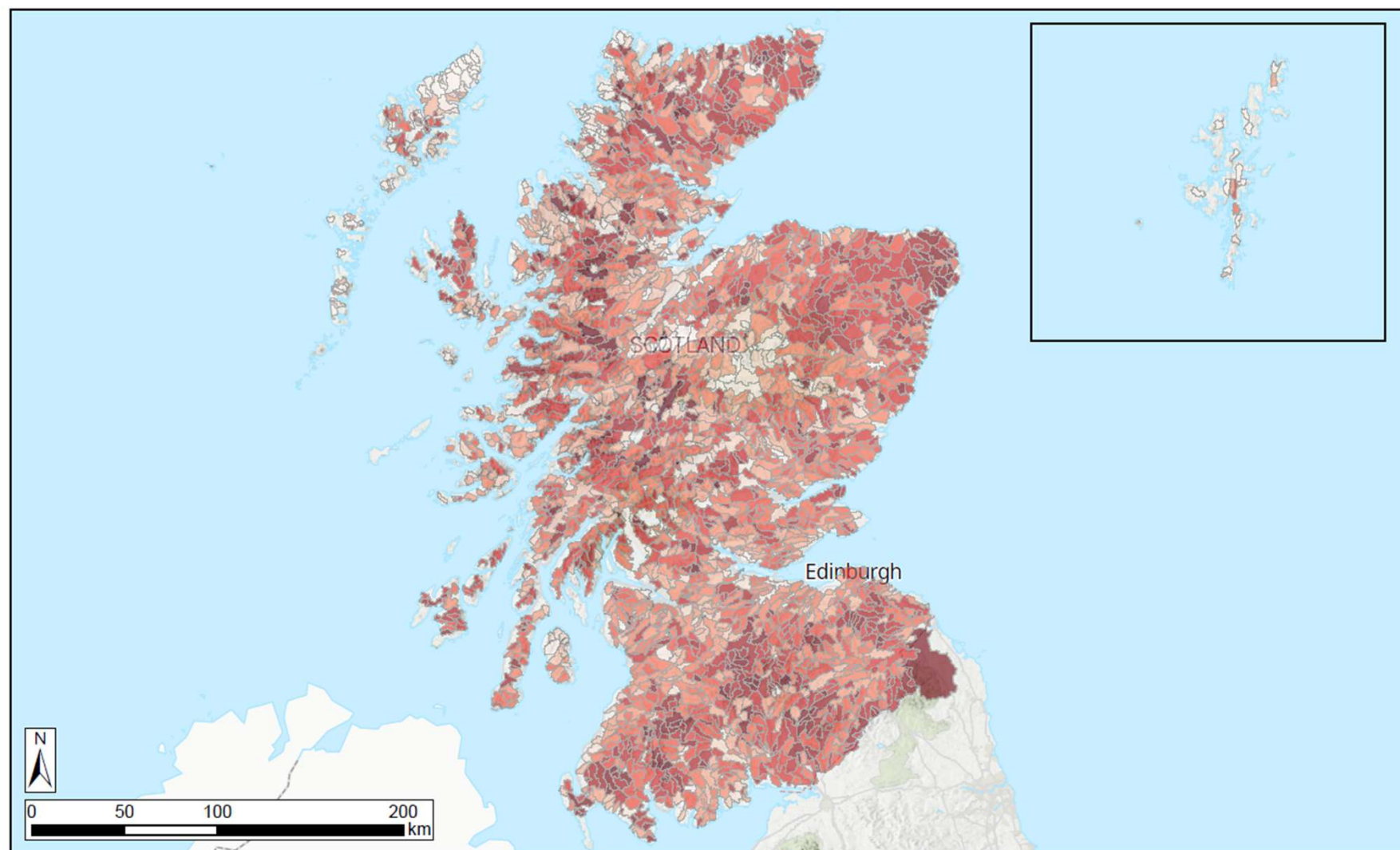
© Scottish Wildlife Trust 2024  
Contains OS Data  
© Crown copyright and database rights 2024.  
Ordnance Survey Licence No: 100065343  
© Scottish Environment Protection Agency. Based on digital  
spatial data licensed from the Centre for Ecology &  
Hydrology, Copyright NERC(CEH).

#### Legend

Percent riparian cover

0.0 - 10	21 - 30
11 - 20	31 - 50
	51 - 75





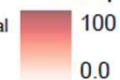
Scottish Wildlife Trust  
Harbourside House  
110 Commercial Street  
Edinburgh, EH6 6NF

09/05/2024

© Scottish Wildlife Trust 2024  
Contains OS Data  
© Crown copyright and database rights 2024.  
Ordnance Survey Licence No: 100065343  
© Scottish Environment Protection Agency. Based on digital  
spatial data licensed from the Centre for Ecology &  
Hydrology, Copyright NERC(CEH).

# **Legend**

Percent poor riparian cover







## River woodlands play an important role in the design & delivery of Nature Networks:



Improve  
Connectivity



Enhance biodiversity



Climate Resilience



Engage  
Communities &  
Stakeholders



Standardised  
Measuring and  
Monitoring





## RIVERWOODS: THE INITIATIVE

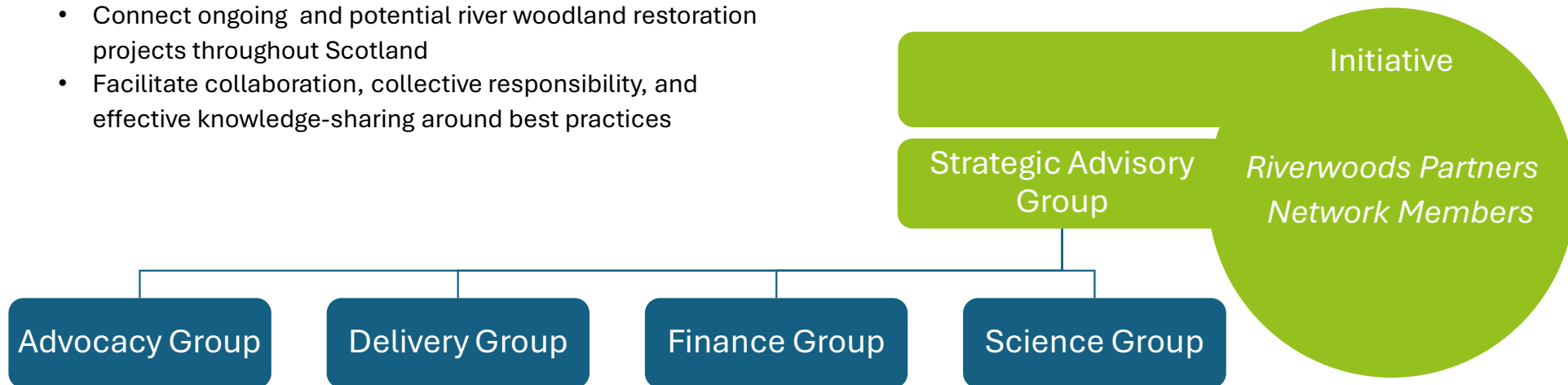
Wide partnership initiative of organisations united behind a common vision, values, and principles, operating under a common brand.

Riverwoods aims:

- Connect ongoing and potential river woodland restoration projects throughout Scotland
- Facilitate collaboration, collective responsibility, and effective knowledge-sharing around best practices

### VISION

A network of river woodland and healthy, resilient river systems throughout Scotland delivering a range of environmental, socio-economic, and financial benefits



# RIVERWOODS

Riverwoods Partners

Initiative

Strategic Advisory  
Group

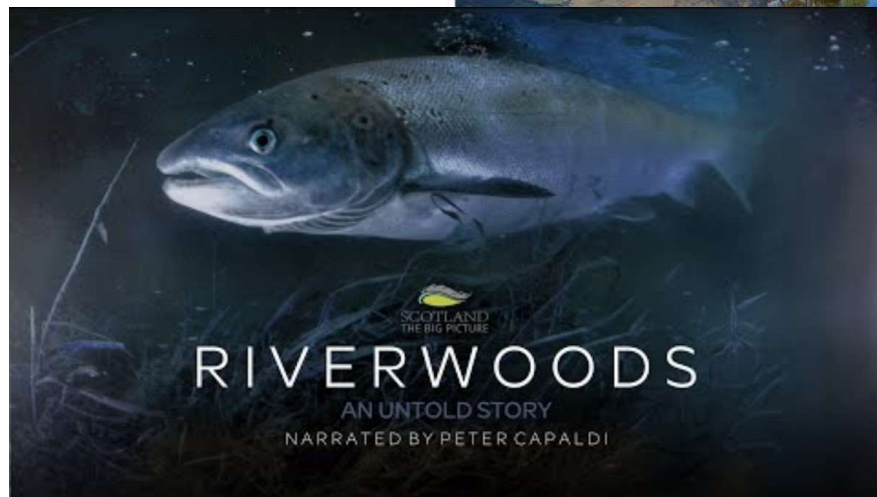
Blueprint  
Project

Advocacy Group

Delivery Group

Finance Group

Science Group





# The Blueprint Project | Eight Workstreams

Delivery Phase (2024-2028)



Demonstration  
Areas



Digital Centre  
of Excellence



Development  
Grant



Community  
Engagement  
& Training



Riverwoods  
Partnership  
Governance



Communications



Advocacy



# Demonstration Areas

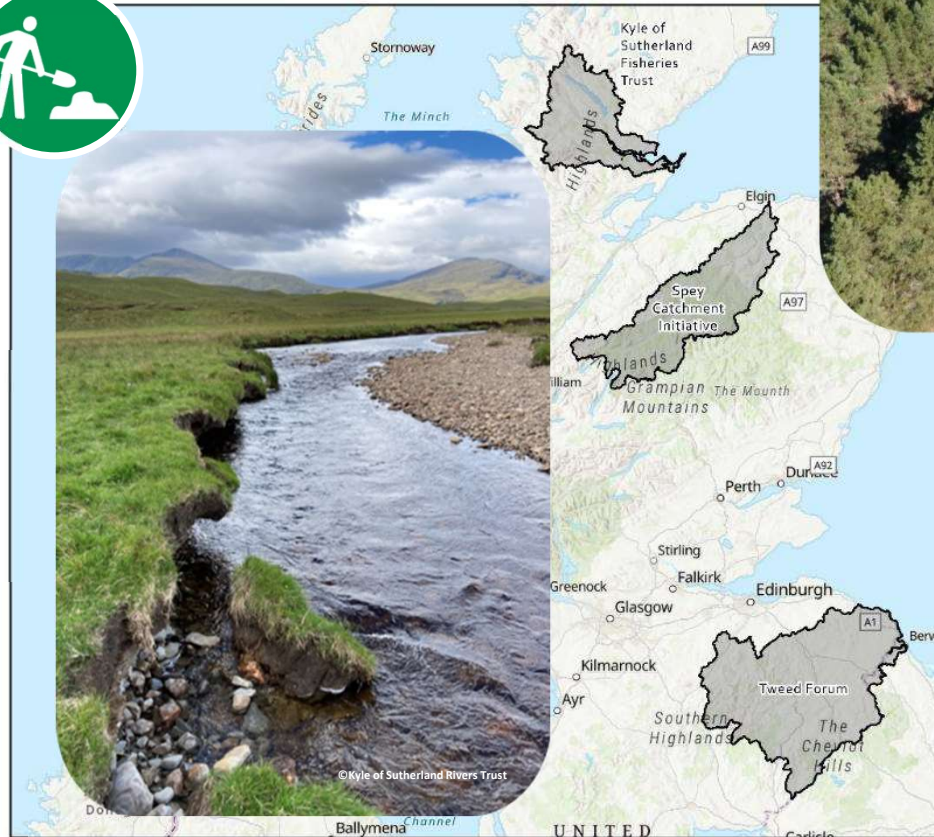
Design



Funding

Delivery

Monitoring



Scottish Wildlife Trust  
Harbourside House  
110 Commercial Street  
Edinburgh, EH6 6NF

20/03/2024

© Scottish Wildlife Trust 2024  
Contains OS Data  
© Crown copyright and database rights 2024.  
Ordnance Survey Licence No: 100065343  
Esri UK, Esri, TomTom, Garmin, FAO, NOAA, USGS, Esri,  
USGS  
Scale at A4: 1:14,279

Legend

■ Demo



Over 150 ha of  
woodland creation  
& restoration



RIVERWOODS

©Tweed Forum



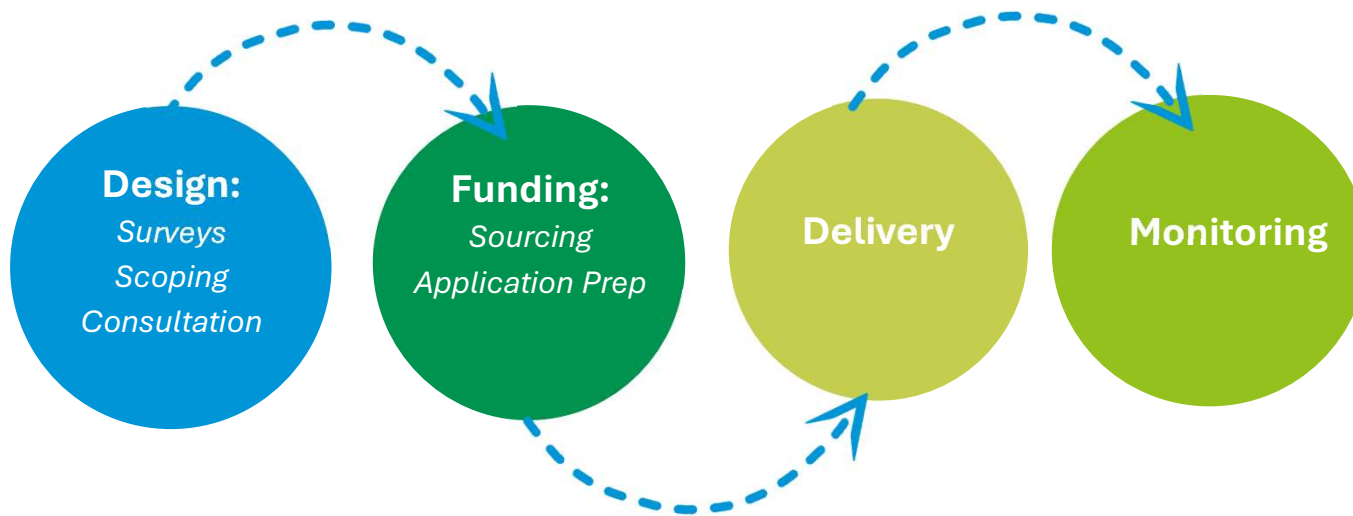
# Riverwoods Development Grant



£200,000 grant scheme to kickstart a pipeline of 10 – 20 new river woodland creation and restoration projects across Scotland

## What and who are eligible?

- £5k - £20k+ development projects
  - Production of river woodland project development plans
  - Contracts for specialist advice and services
  - Activities to engage landowners and communities
- Open to eNGOS, charitable organisations, constituted voluntary groups and local authorities



Now open  
for  
applications!

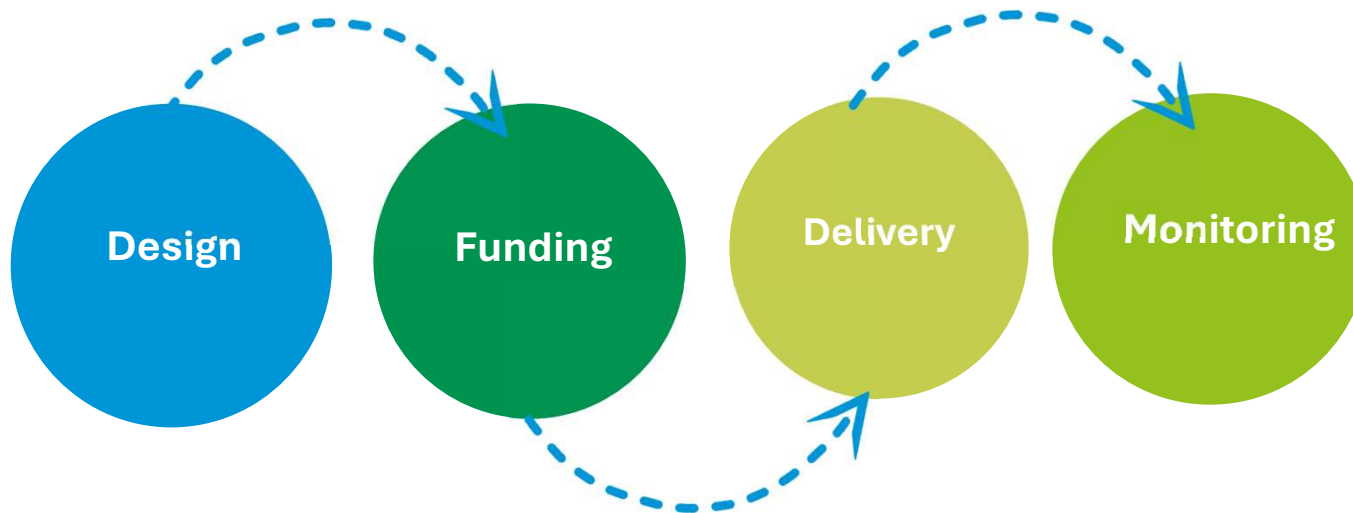
# Digital Centre of Excellence



A digital hub of tools and resources for practitioners, land managers and owners and community groups looking to carry out river woodland creation and restoration projects.

## What challenges are we addressing?

- Fragmented funding information
- Lack of collaboration tools
- Limited decision-making support
- Skill gaps in communities



**Coming soon!**  
(early 2026)



Best Practice Guidance

Riverwoods Showcase

Project Cost Calculator

Riverwoods Directory

Funding Eligibility Tool

Opportunity Mapping

Project Register

Data Hub

Riverwoods Forum

Training Centre





## Current Data Hub

This survey aims to gather information on Riverwoods sites.  
Non-personal data will be shared publicly as a knowledge resource for the Riverwoods initiative.

See [our website](#) for more information on Riverwoods and our partners.

Please check the map of previous submissions on the right of the page to help to avoid duplication.

Note: your project will not appear immediately after submission as it will go through moderation.

Initiative Name\*

### River Catchment\*

Location (Mapped)\*

Please draw a border giving an approximation of the extent of the activities.  
If your site covers several discrete areas, please encapsulate them in one polygon as demonstrated above.  
Click the 'Area' polygon on the right to begin drawing. When finished, double click to complete.





# Opportunities to get involved with Riverwoods:

**Become a Riverwoods Partner or Member!**

**[www.riverwoods.org.uk/join-the-partnership/](http://www.riverwoods.org.uk/join-the-partnership/)**

**Engage your communities in Riverwoods activities and help others learn about Riverwoods**

**Apply for the Development Grant and kickstart a new Riverwoods project**

**Keep an eye out for resources on the Digital Centre of Excellence and other opportunities for support and exchange...**



To learn more or get involved, visit [www.riverwoods.org.uk](http://www.riverwoods.org.uk)  
or contact us at [riverwoods@scottishwildlifetrust.org.uk](mailto:riverwoods@scottishwildlifetrust.org.uk)



*The Blueprint Project is made possible by the National Lottery Heritage Fund and National Lottery players.*

***Many thanks to all our partners, funders, volunteers and supporters!***