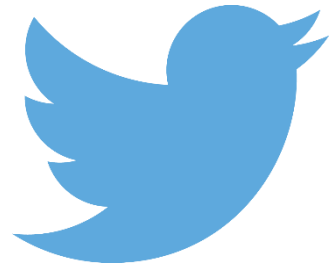




**Be part of the conversation!
Follow APSE on Twitter and LinkedIn**



**@apseevents
#apsePN**



**@APSE - Association for
Public Service Excellence**

Annual Seminar

- 23/24 March
- Blackpool

APSE Highways, Street Lighting and Winter Maintenance Seminar 2023



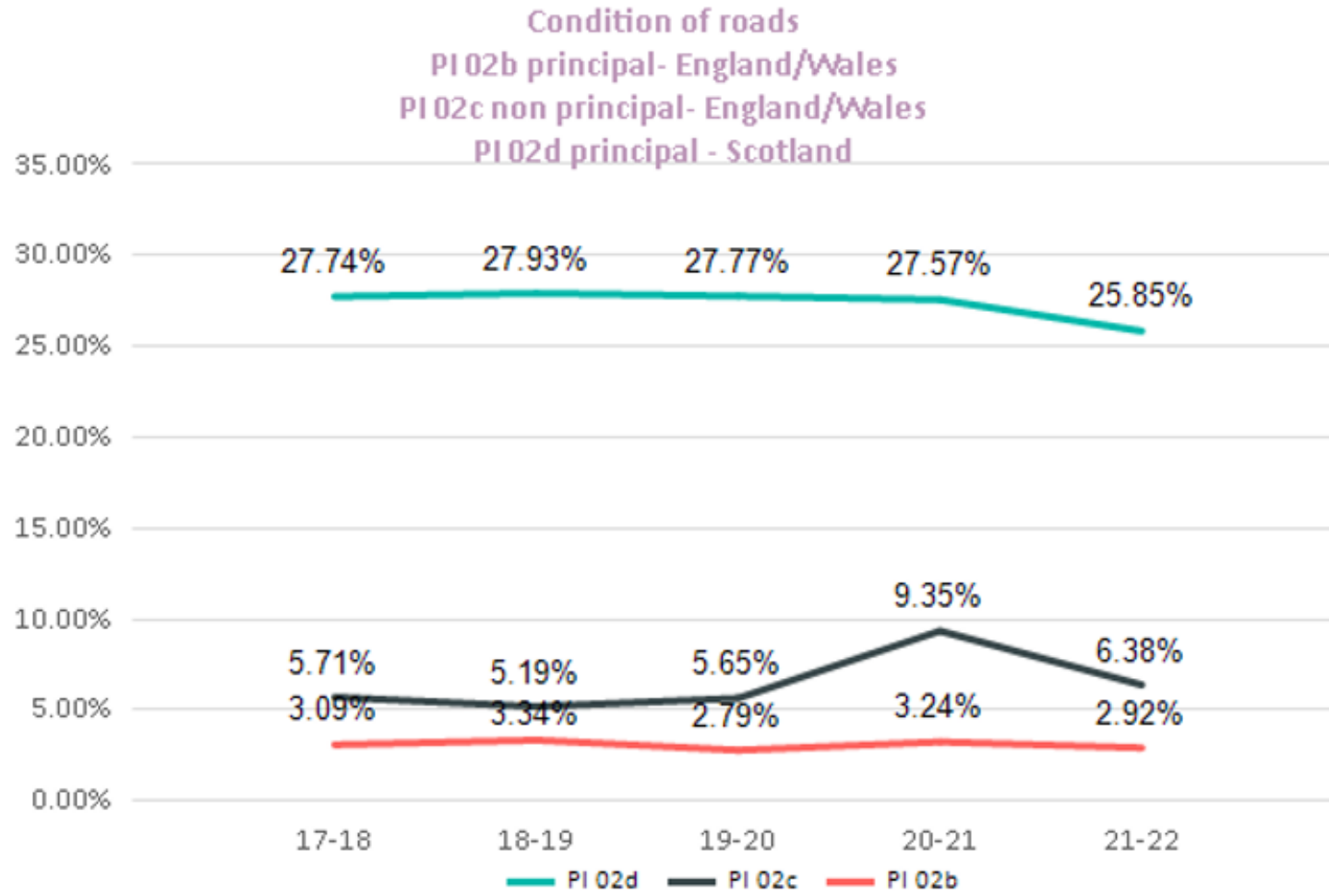
23 – 24 March 2023

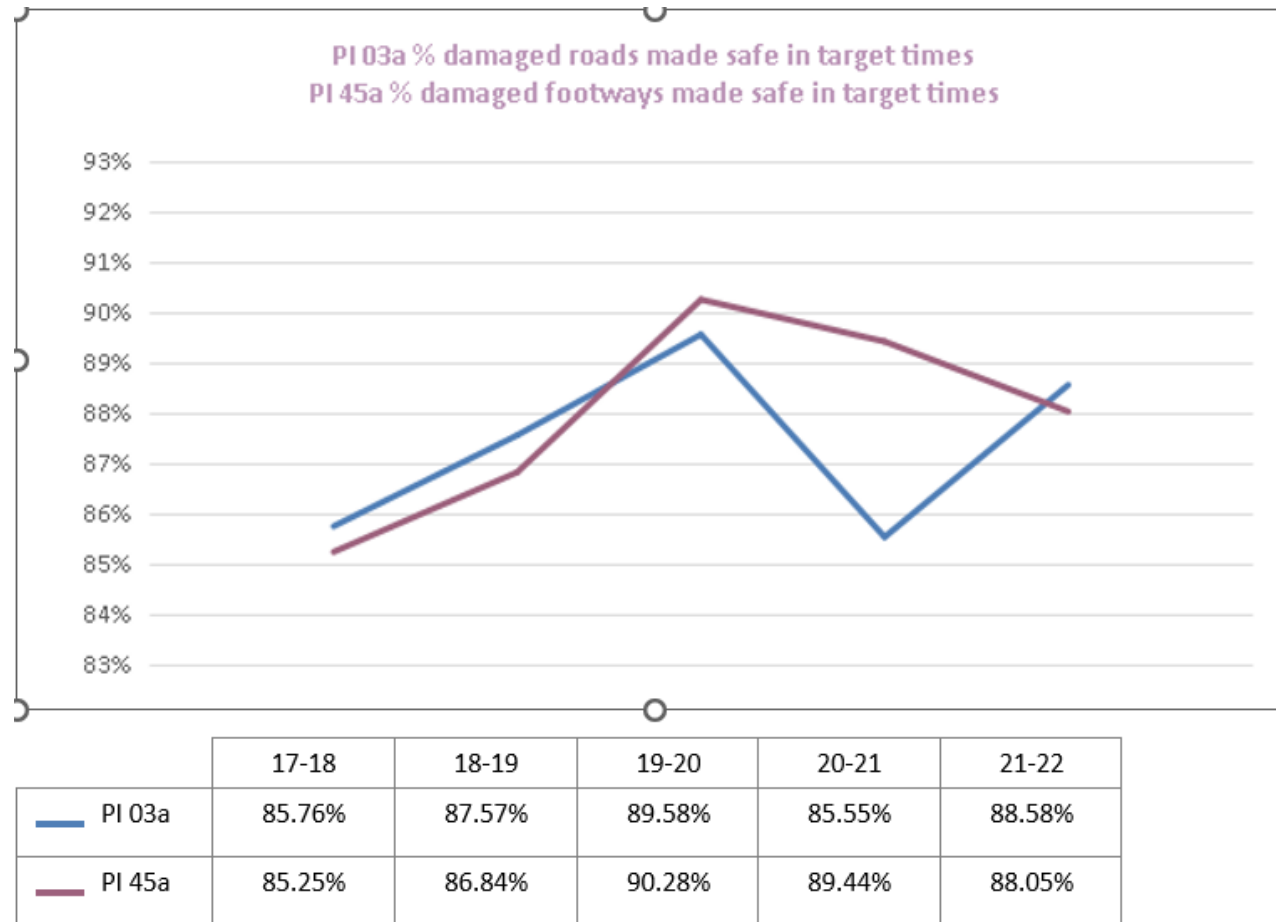
Village Hotel Blackpool, FY3 8LL



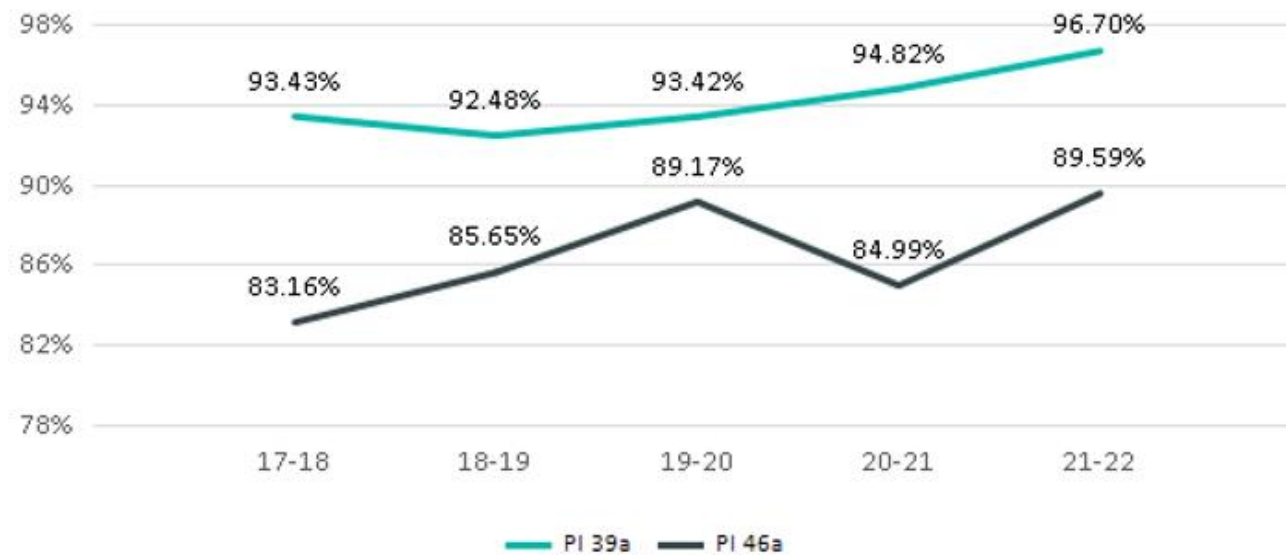
State of the Highways and Street Lighting Market

Rob Bailey, APSE principal advisor





PI 39a Percentage of safety inspections completed on time (carriageways)
PI 46a Percentage of safety inspections completed on time (footways)

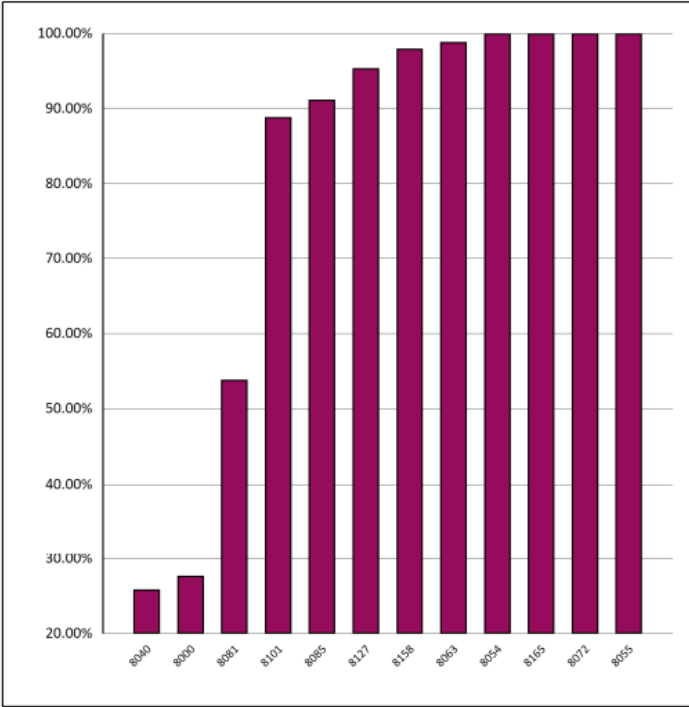




PI 03a Percentage of emergency (cat 1) defects made safe within response times

Family group H4

	Number of emergency defects	Incidents made safe	Percentage made safe
Average	149	126	81.64%
Lowest	2	2	25.86%
Highest	926	883	100.00%



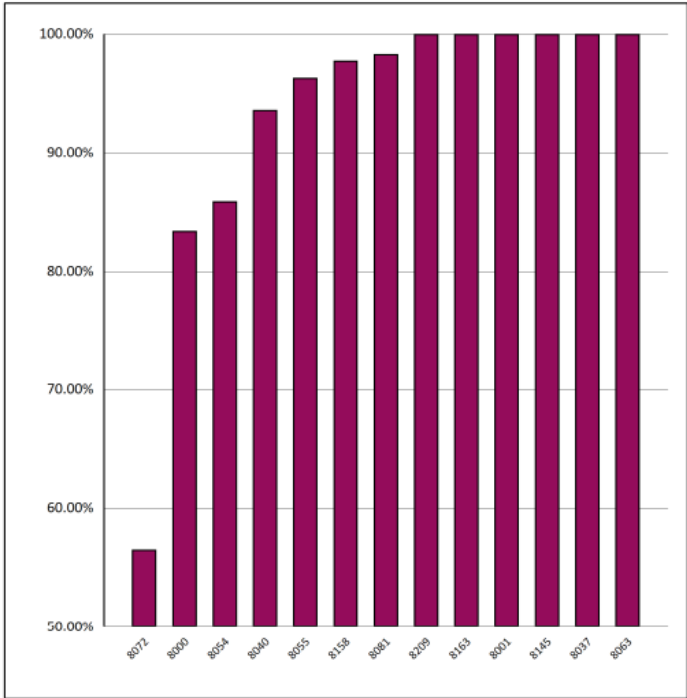
Increased Third Party liability ?



PI 39a Percentage of safety inspections completed on time

Family group H4

	Number of safety inspections	Number completed on time	Percentage on time
Average	1,029	933	93.21%
Lowest	78	73	56.46%
Highest	6,564	5,640	100.00%



Source data

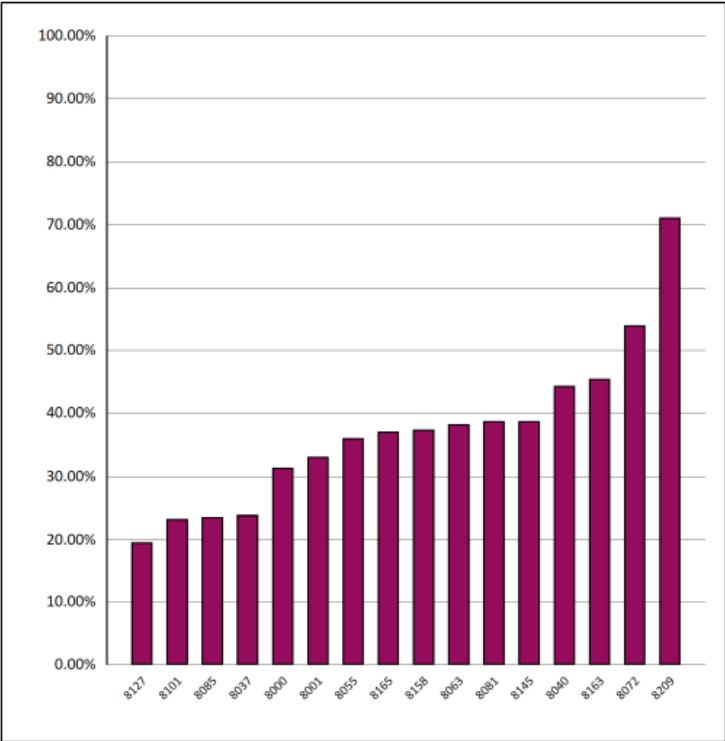
Increased Third Party liability ?



PI 114 Percentage of maintained network subject to salting regime

Family group H4

	Total Km of carriageways maintained	Km of network salted	Percentage subject to salting regime
Average	2,574.68	928	37.24%
Lowest	984.51	252	19.59%
Highest	5,581.87	1,921	71.09%



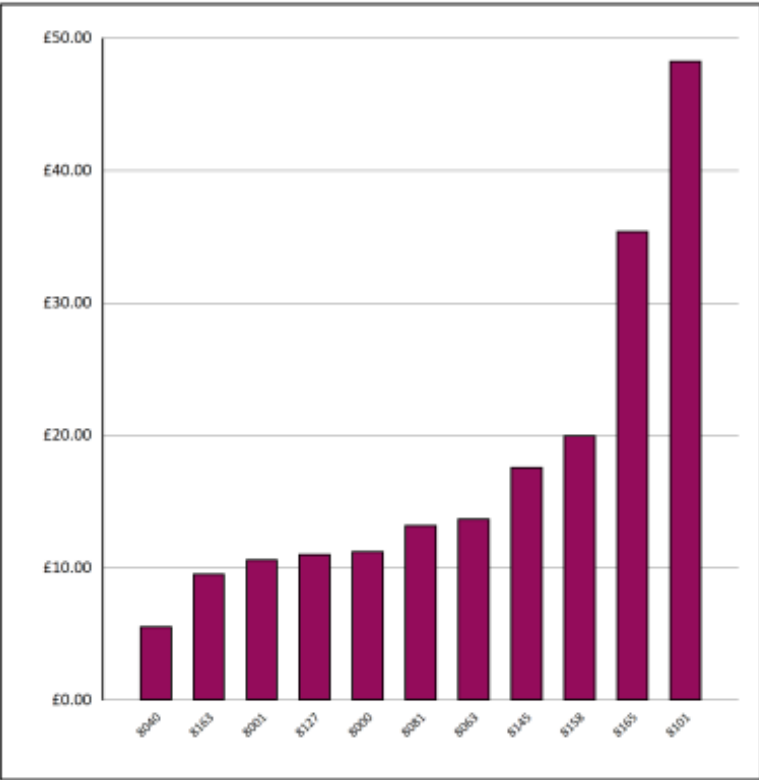
Revenue Savings ?



PI 32 Service cost per gully

Family group H4

	Gullies emptied	Total cost	Cost per gully
Average	29,100	£386,801	£17.86
Lowest	1,849	£73,840	£5.58
Highest	104,322	£998,473	£48.29



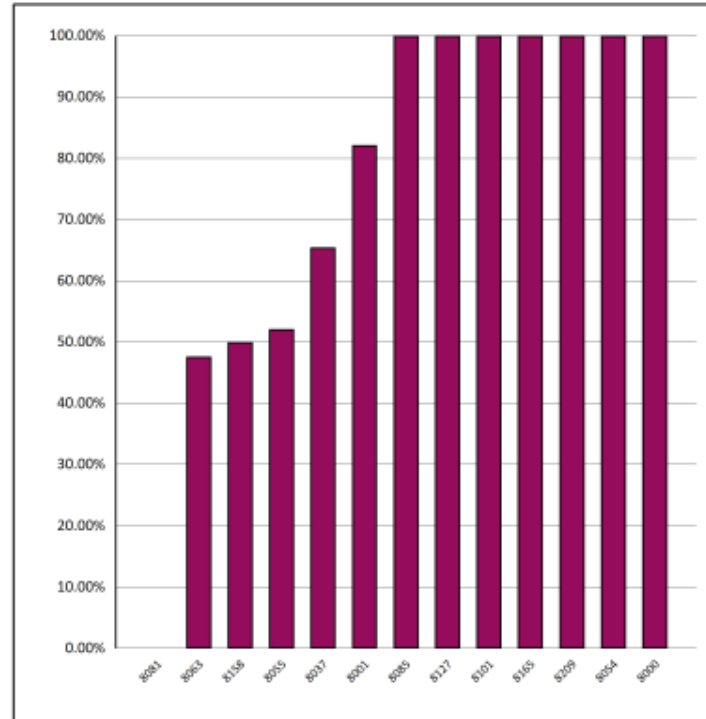
Revenue savings ?



PI 300 Percentage of principal inspections completed on time

Family group H4

	Number of inspections	Number on time	Percentage on time
Average	81	58	76.71%
Lowest	1	0	0.00%
Highest	240	210	100.00%



Bridge Inspections

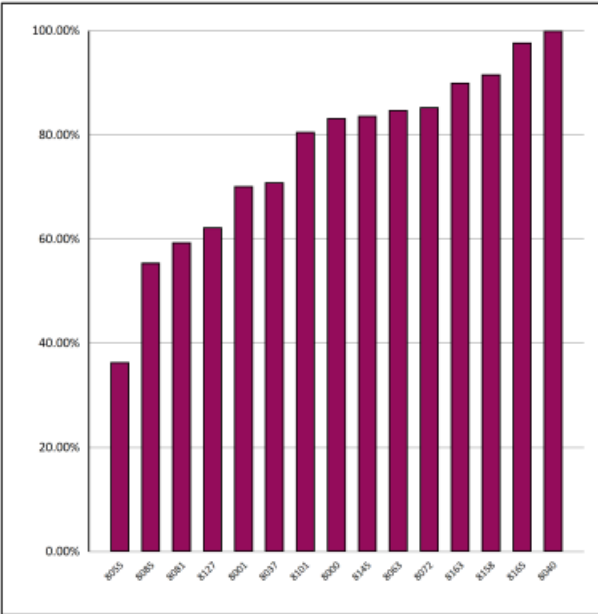
Open to third party claims ?



PI 15a Percentage of total roads/highways function cost (revenue and capital) spent directly on roads/highways repairs

Family group H4

	Total spent on repairs	Maintenance cost (total network)	Percentage spent on repairs
Average	£9,903,426	£12,597,501	76.78%
Lowest	£1,373,682	£1,704,131	36.40%
Highest	£27,215,054	£27,845,245	99.99%

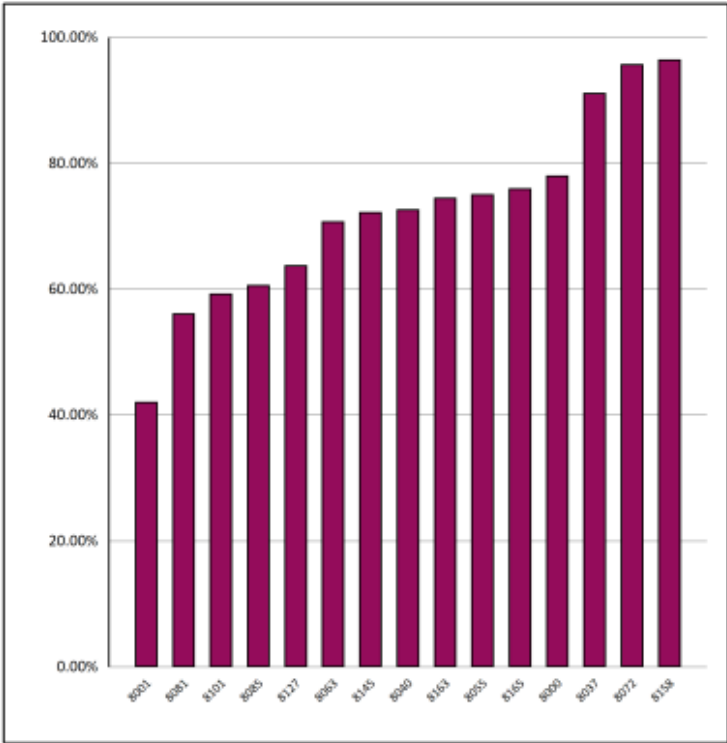


Significant variation in maintenance strategies ?

PI 16 Percentage of actual maintenance expenditure (carriageways and footways) which is planned

Family group H4

	Total maintenance expenditure	Total planned maintenance expenditure	Percentage planned
Average	£10,704,497	£8,157,045	72.34%
Lowest	£1,385,483	£821,714	42.12%
Highest	£27,215,054	£20,685,792	96.49%

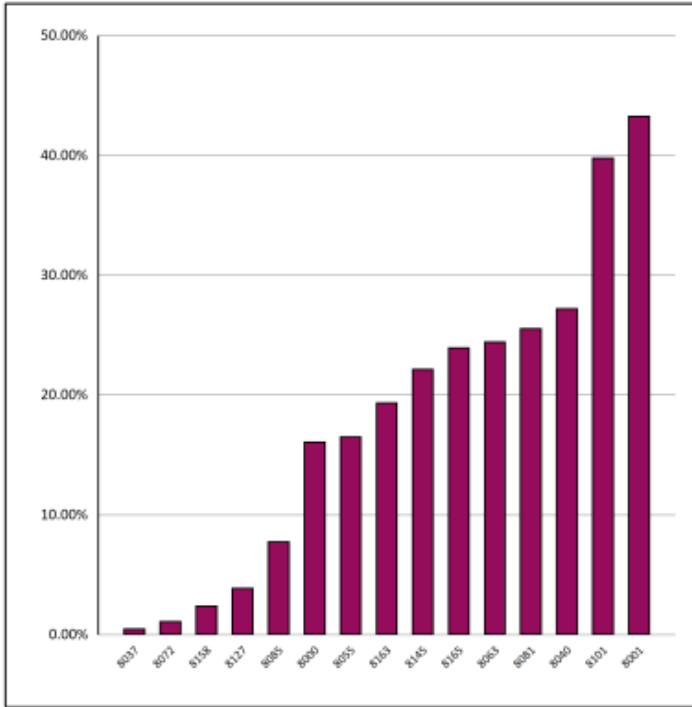


Significant variation in maintenance strategies ?

PI 17 Percentage of actual maintenance expenditure (carriageways and footways) that is reactive

Family group H4

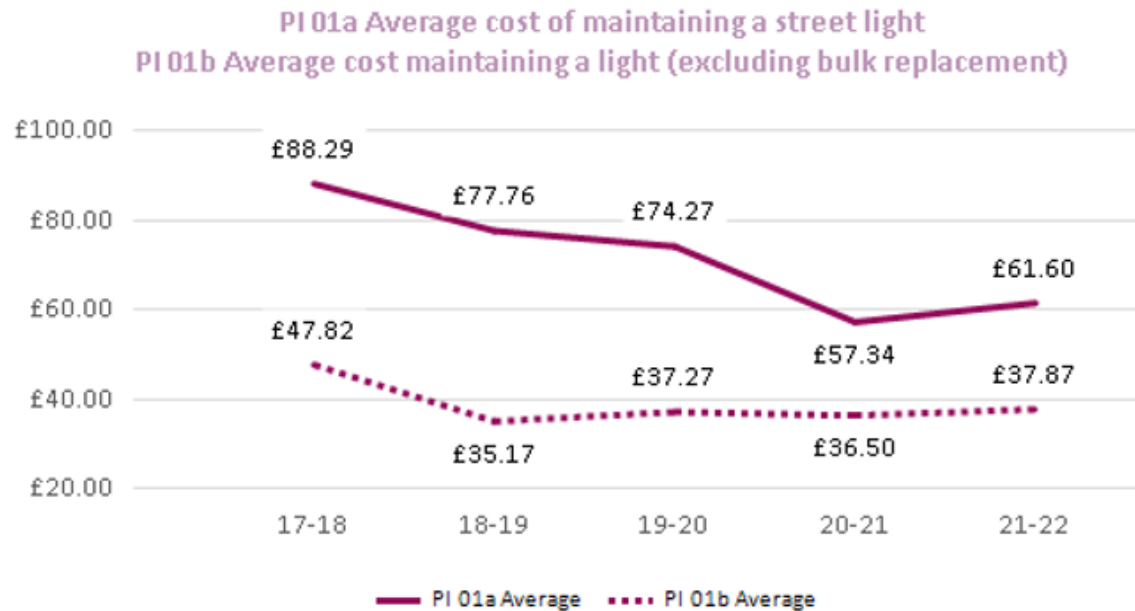
	Total maintenance expenditure	Total reactive maintenance expenditure	Percentage reactive
Average	£10,704,497	£1,746,381	18.30%
Lowest	£1,385,483	£15,789	0.52%
Highest	£27,215,054	£6,529,262	43.31%



**Reactive Maintenance
Less Efficient ?**

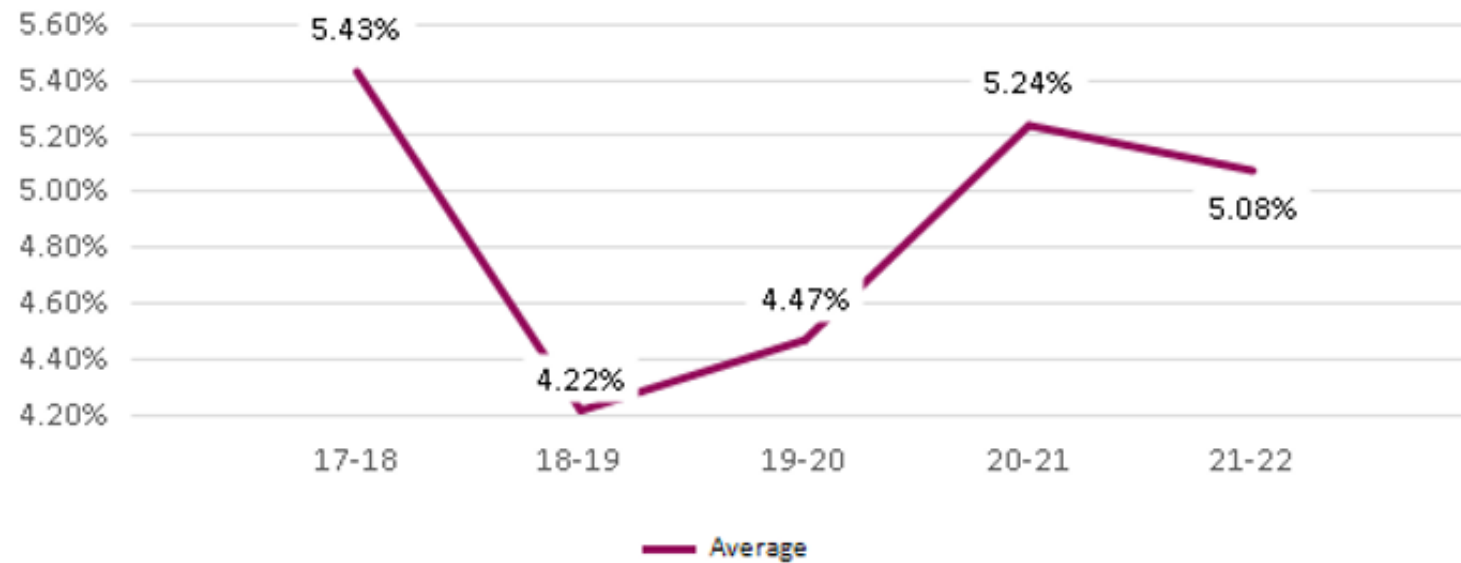
Street Lighting



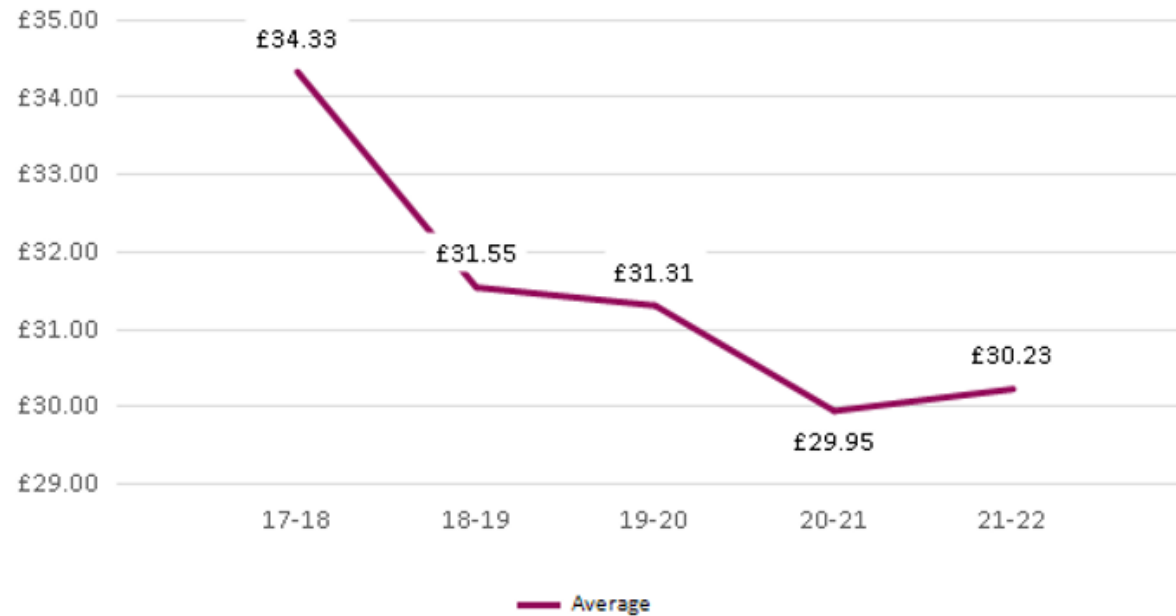


2022 Onwards ,,...construction inflation ?

PI 38c Percentage of street lamps that are part night lighting

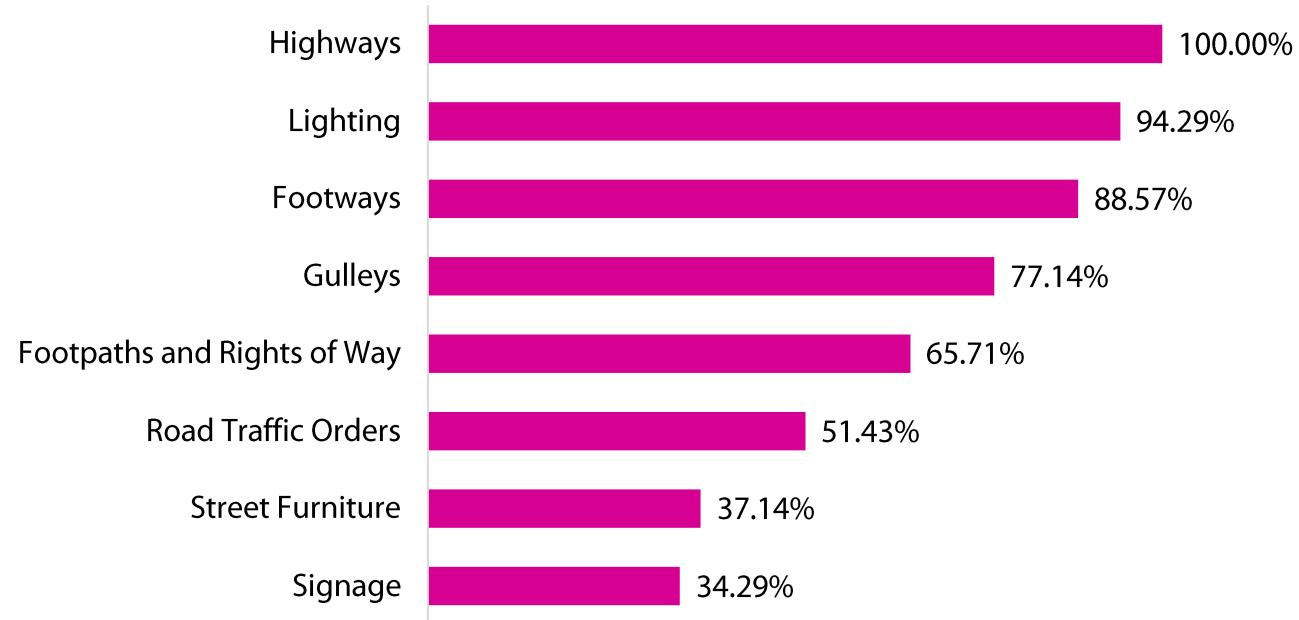


PI 06b Energy cost per street lamp and illuminated sign

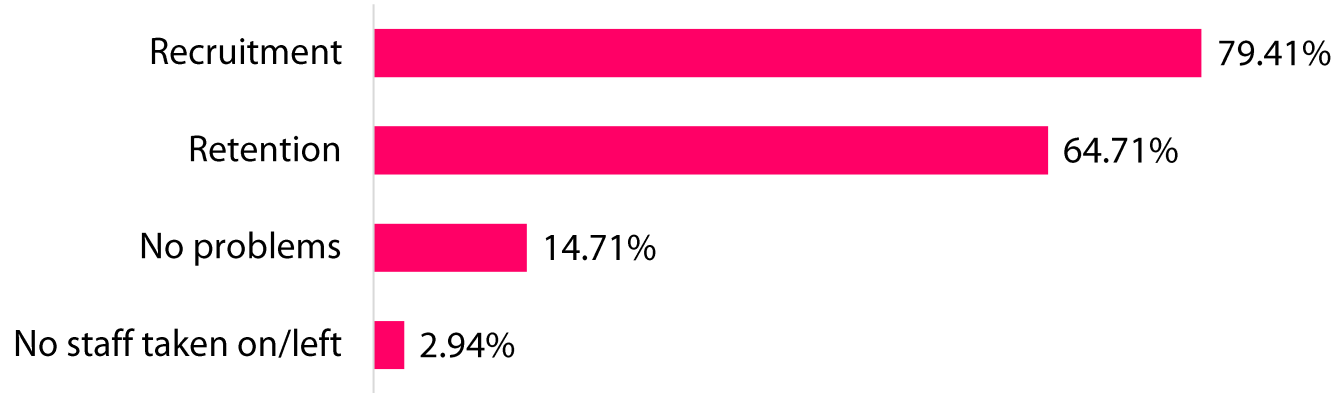


2022 onwards Energy Cost Increase even with increase in LEDs ?

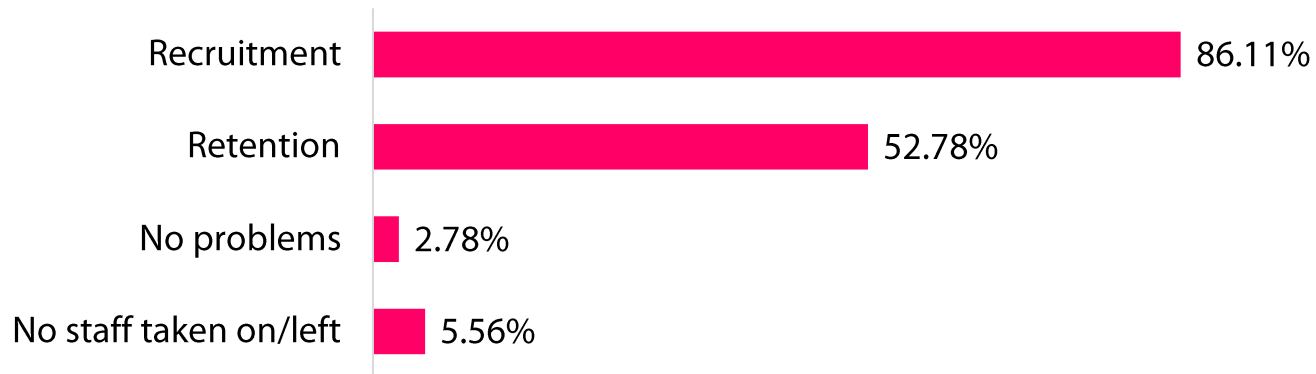
What assets do you currently hold within your asset management system?



Where have you had difficulty recruiting or retaining staff (over the past 12 months)? Operatives



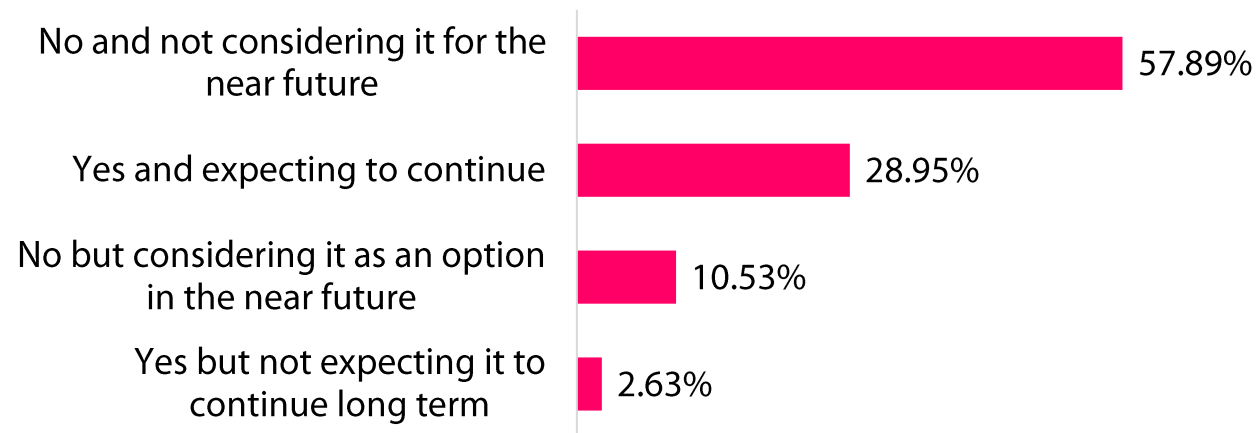
Technical/managerial staff



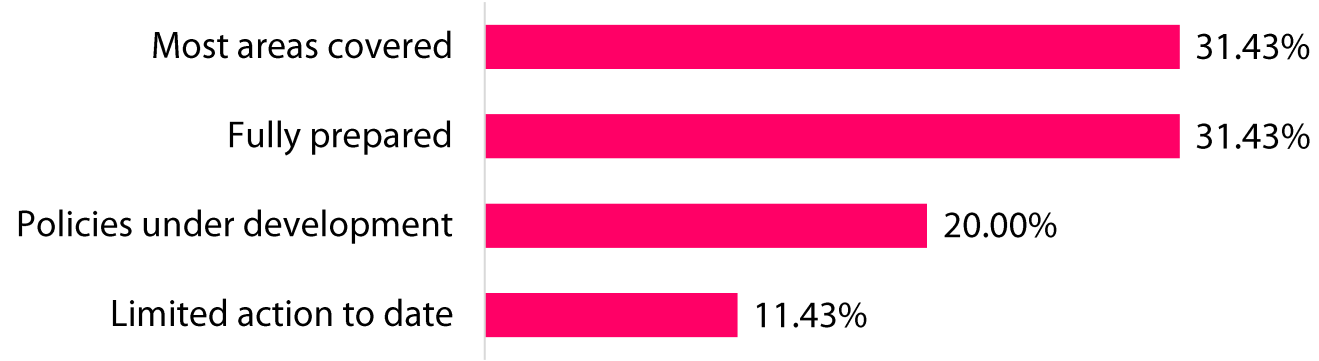
What is the average age of your highways maintenance operational staff?



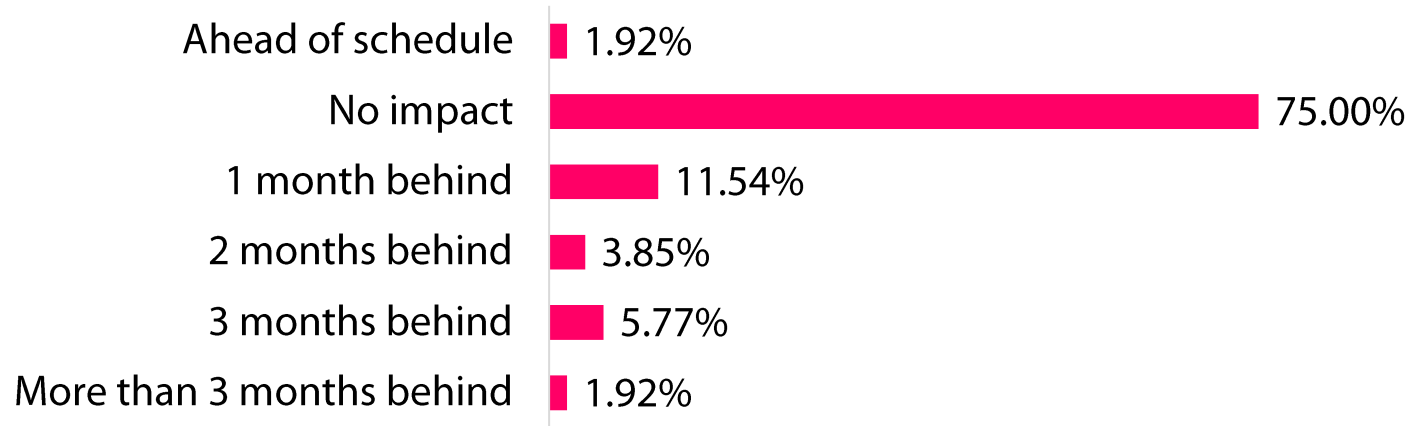
Do you currently sell your services to organisations external to the council?



How prepared are you for the introduction of the New Code of Practice “Well managed Highways infrastructure”?



How has COVID-19 impacted on your 2022 resurfacing schedule? How many months behind schedule are you?



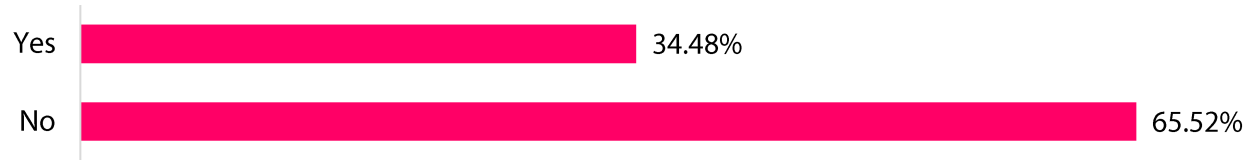
Where do you see growth areas for the service over the next 12 months

<ul style="list-style-type: none">• Ash dieback	<ul style="list-style-type: none">• Severe weather
<ul style="list-style-type: none">• EV charging	<ul style="list-style-type: none">• Improvement schemes
<ul style="list-style-type: none">• Carbon reduction	<ul style="list-style-type: none">• Work for external developers
<ul style="list-style-type: none">• Drainage technology	<ul style="list-style-type: none">• Reactive maintenance
<ul style="list-style-type: none">• Flood management	<ul style="list-style-type: none">• Gully cleansing
<ul style="list-style-type: none">• Active travel	<ul style="list-style-type: none">• Sustainability issues
<ul style="list-style-type: none">• Recruitment and retention activities	<ul style="list-style-type: none">• Street works
<ul style="list-style-type: none">• Investment in road repairs technologies	<ul style="list-style-type: none">• Longer-term wider ventures

Where do you see areas where work may decrease over the next 12 months?

<ul style="list-style-type: none">• LED replacement	<ul style="list-style-type: none">• Commercial activity
<ul style="list-style-type: none">• Reactive defect repairs	<ul style="list-style-type: none">• Cyclic gully cleansing
<ul style="list-style-type: none">• Carriageway surfacing	<ul style="list-style-type: none">• Schemes in general due to increased costs for fuel and materials
<ul style="list-style-type: none">• Works due to reductions in capital maintenance funding	<ul style="list-style-type: none">• Schemes in general due to the lack of available contractors
<ul style="list-style-type: none">• New road construction	<ul style="list-style-type: none">• Surface treatments

Do you have a CMS System?



Does your council scout for failures?

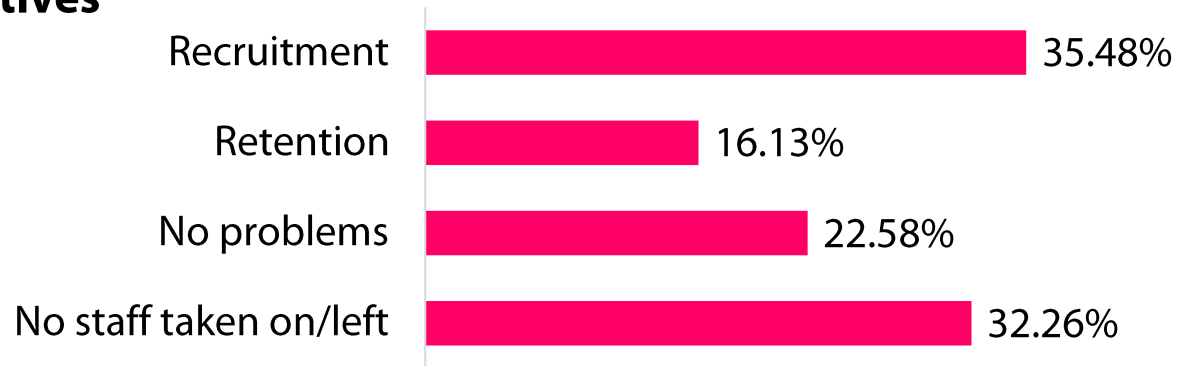


What is your council’s target time for restoring street lights to working order (in days)?

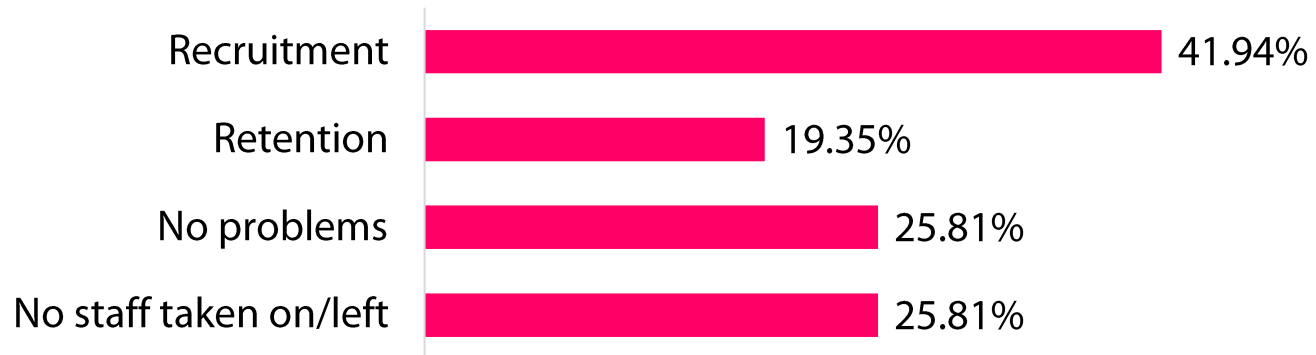
4 days or less	2
5 days	9
7 days	11
10 days	2
14 days	2
21 or more days	2

Where have you had difficulty recruiting or retaining staff (over the past 12 months)?

Operatives



Technical staff





Where do you see growth areas for the street lighting service over the next 12 months?

<ul style="list-style-type: none">• Use of street lighting for 5G	<ul style="list-style-type: none">• Column replacements
<ul style="list-style-type: none">• Use of street lighting for electric vehicle charging	<ul style="list-style-type: none">• Hiring charges for third party fixture to columns
<ul style="list-style-type: none">• Underground cable replacements	<ul style="list-style-type: none">• Adoption of new developments
<ul style="list-style-type: none">• LED renewals	<ul style="list-style-type: none">• Public realm lighting
<ul style="list-style-type: none">• Taking design work in-house	<ul style="list-style-type: none">• Renewing structurally failed columns

- Recruitment and retention
- Inflationary wage costs
- Fuel costs
- Reducing carbon footprint
- Contactor resilience

NEW MUNICIPALISM

Delivering for local people and local economies



Contact details

Rob Bailey, principal advisor

Email: rbailey@apse.org.uk

Association for Public Service Excellence

2nd floor Washbrook House, Lancastrian Office Centre, Talbot Road,
Old Trafford, Manchester M32 0FP.

telephone: 0161 772 1810

web: www.apse.org.uk