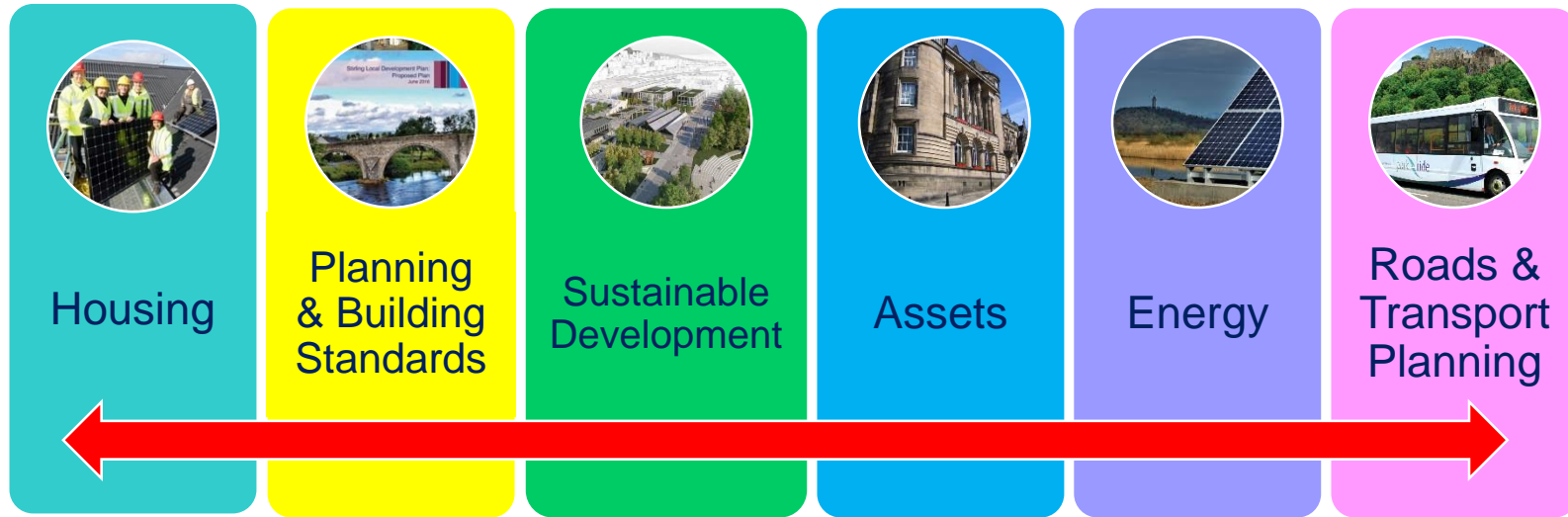




Energy

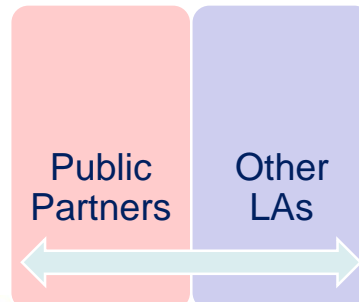


Energy sits across multiple areas within the Council – collaboration will be key with all stakeholders, including public partners, and knowledge sharing with other Local Authorities

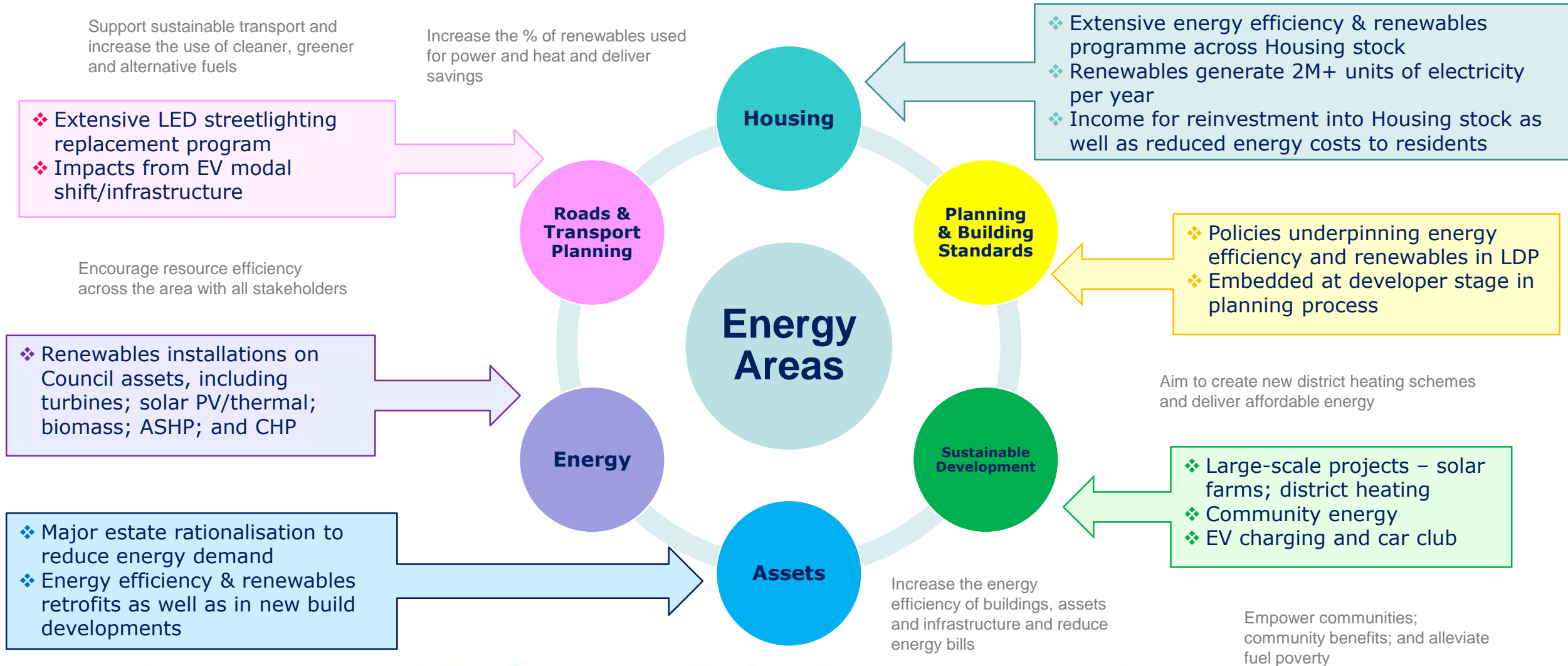


Strategic Overview:

- ❖ Central Project Register
- ❖ Project Coordination (planning)
- ❖ Overlaps, Gaps & Duplication
- ❖ Efficient Stakeholder Engagement & Management
- ❖ Collaborative Gain: Sharing Specialist Knowledge
- ❖ Cross referencing - Internal Resource Efficiency & Allocation



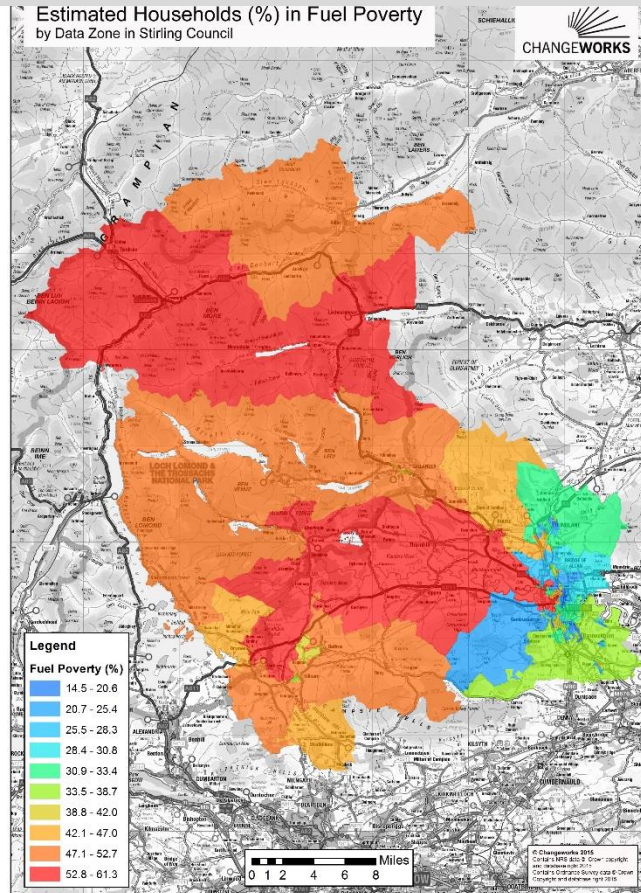
Energy Programmes to Date



Need for strategic energy masterplanning to identify and optimise opportunities – HERO approach Heat, Energy & Renewables Opportunities with community energy at its core

Challenges:

- ❖ High levels of fuel poverty
- ❖ High levels of pre-1960s Housing stock (90%)
- ❖ Large areas off gas grid – lack of fuel choice
- ❖ Grid Constraints
- ❖ Geographical Constraints
- ❖ Large area within National Park
- ❖ Resources – time and money
- ❖ Incentives Slashed
- ❖ Data collation and analysis

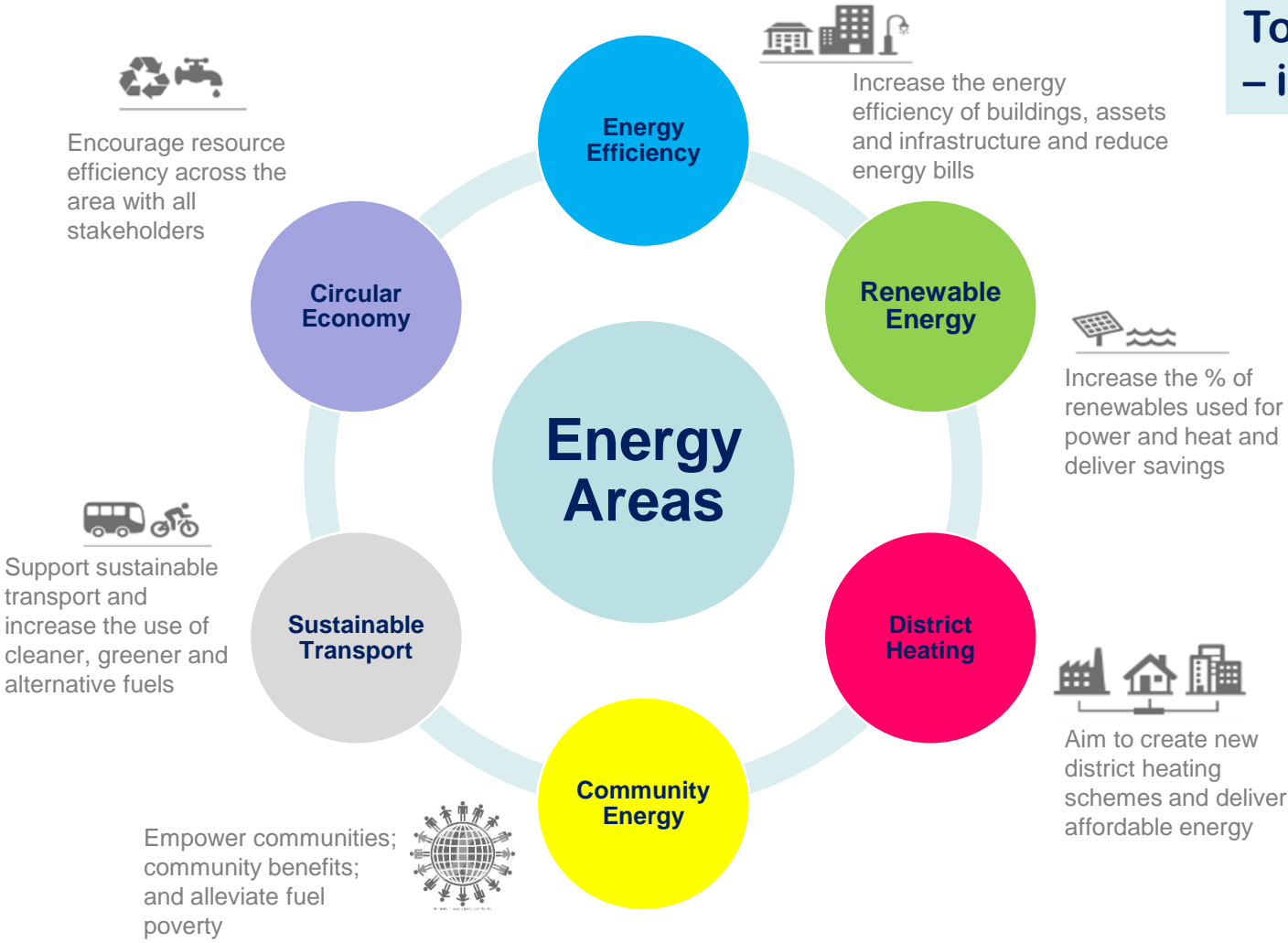


Benefits & Opportunities:

- ❖ Energy Reduction
- ❖ Energy Savings (£)
- ❖ Carbon Savings
- ❖ Income Generation
- ❖ Community Benefits – tailored to each community
- ❖ Fuel Poverty Alleviation
- ❖ Local Job Creation/Upskilling
- ❖ Regeneration, Economic Development & Investment
- ❖ Collaboration: Knowledge Share/Economies of Scale



To make an impact the Council can't do it alone – it is key that the Council is leading by example



Need to know:

- ❖ where we are starting from (baseline)
- ❖ Where do we want to go? (target)
- ❖ What will we do to get there? (projects/actions)

How will we measure success? (KPIs):

- ❖ Reduction in number of people in fuel poverty?
- ❖ Reduction in energy consumption?
- ❖ Proportion of consumed energy sourced from renewables?
- ❖ Number of jobs created by sustainable energy projects?

