

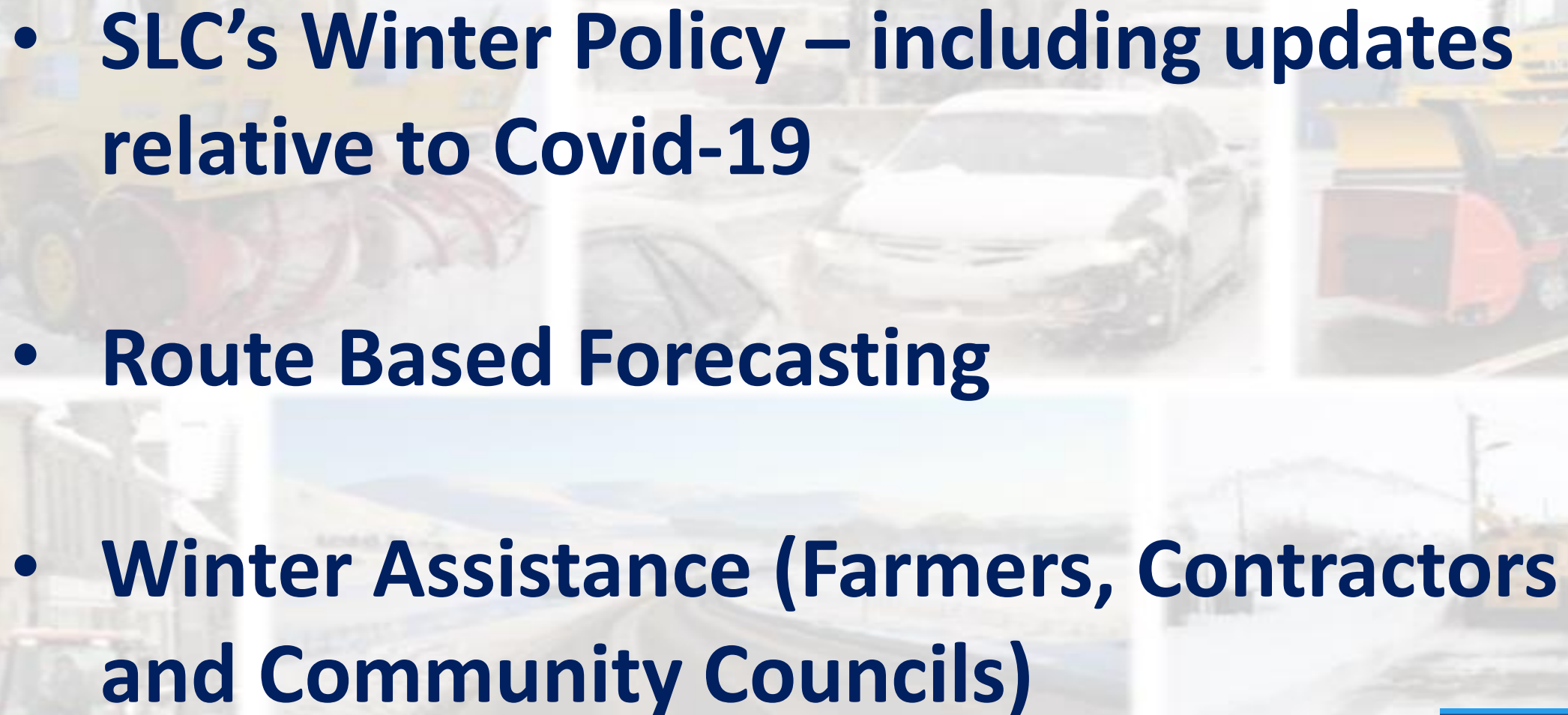


South Lanarkshire's Winter Policy

Where are we now?

Adam Leslie
Team Leader

Winter, Fleet & Business Development

- 
- **SLC's Winter Policy – including updates relative to Covid-19**
 - **Route Based Forecasting**
 - **Winter Assistance (Farmers, Contractors and Community Councils)**

About South Lanarkshire

- **2295km Road Network**
- **1191km treated on a Precautionary Basis (52%)
distributed into 23 Routes**
- **2380km Footway Network**
- **83km treated on a Precautionary Basis (3.5%)
distributed into 12 Routes**
- **Use 35,000T Salt in an average Winter**



Winter Service Policy & Procedures 2021/2022



Winter Policy and Procedures

Covid-19 Risks

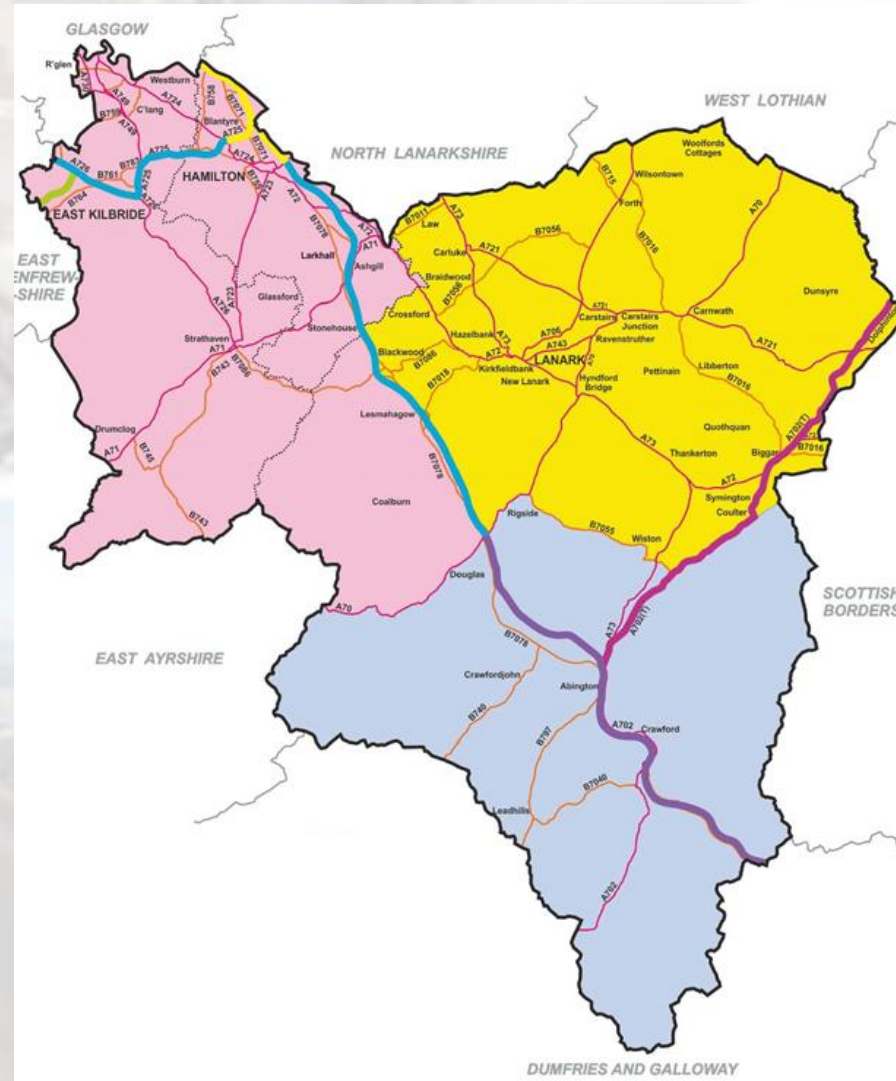
- Salt
- People
- Vehicles



How do we mitigate these risks?

Route Based Forecasting - Before

- 3 Climatic Domains
- East Domain (Yellow)
- South Domain (Blue)
- West Domain (Pink)



Route Based Forecasting - During

- Investigation began 2014
- Trial Period Winter 2014/2015
- Introduced in 2015/2016
- Savings / Efficiencies

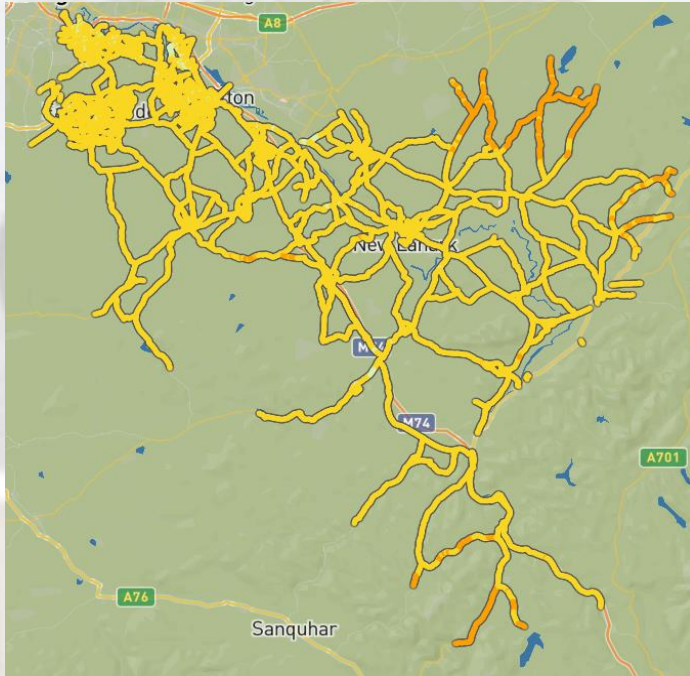
Route Based Forecasting

Filter on severity: All

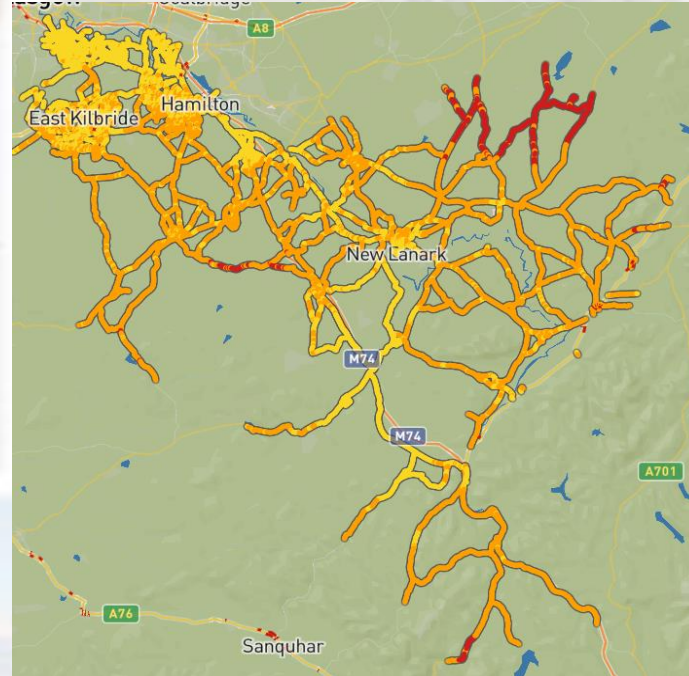
Distribution (%) 5th Wednesday 12:00

	Tue, 2	Wed, 3
	12 13 14 15 16 17 18 19 20 21 22 23	00 01 02 03 04 05 06 07 08 09 10 11 12
> High Camwath 1	[Bar chart]	[Bar chart]
Lowest surface temperature (°C)	8.8 9.4 10 9.2 5.7 6.4 6.1 3.7 3.7 1.9 1.3 1.3 0.8 0.4 0.1 -0.1 -0.4 -0.1 0.5 3.2 3.6 4.3 5.8 7.4	
> High Camwath 2	[Bar chart]	[Bar chart]
Lowest surface temperature (°C)	9.2 10 9.5 7.9 6.4 5.2 3.9 2.7 1.7 1.1 0.9 0.8 0.3 0.8 -0.3 -0.5 -0.8 -0.6 0.3 0.9 2.3 4.3 5.8 7.4	
> High Camwath 3	[Bar chart]	[Bar chart]
Lowest surface temperature (°C)	6.9 9.7 9.8 9.1 7.6 6.0 4.9 3.4 2.5 1.8 1.2 0.9 0.6 0.3 0.8 -0.3 -0.5 -0.8 -0.6 0.1 0.6 2.3 4.3 5.8 7.4	
> High Camwath 4	[Bar chart]	[Bar chart]
Lowest surface temperature (°C)	9.2 9.9 9.3 7.7 6.4 5.2 3.8 2.7 1.8 1.3 1.0 0.7 0.4 0.1 -0.3 -0.5 -0.8 -0.6 0.3 0.9 2.3 4.3 5.8 7.3	
> High Camwath 5	[Bar chart]	[Bar chart]
Lowest surface temperature (°C)	9.3 9.9 10 9.5 8.1 6.7 5.5 4.3 3.0 2.1 1.5 1.2 0.8 0.3 0.4 0.1 -0.1 -0.3 -0.8 0.6 1.3 2.8 4.4 5.8 7.4	
> High East Kilbride 1	[Bar chart]	[Bar chart]
Lowest surface temperature (°C)	9.8 10 9.3 7.9 6.6 5.5 4.4 3.2 2.4 1.8 1.4 1.1 0.7 0.4 0.1 -0.1 -0.4 -0.2 0.3 1.0 2.5 4.1 5.7 7.4	
> High East Kilbride 2	[Bar chart]	[Bar chart]
Lowest surface temperature (°C)	9.1 10 9.7 8.5 7.2 6.2 5.0 3.6 3.1 2.5 2.1 1.7 1.3 0.9 0.7 0.4 0.1 0.3 0.6 1.3 3.0 4.7 6.3 7.7	
> High East Kilbride 3	[Bar chart]	[Bar chart]
Lowest surface temperature (°C)	9.2 10 11 10 9.0 7.5 6.4 5.4 4.3 3.3 2.7 2.2 1.8 1.4 1.1 0.8 0.5 0.2 0.4 0.7 1.4 2.8 4.8 6.5 7.9	
> High East Kilbride 4	[Bar chart]	[Bar chart]
Lowest surface temperature (°C)	9.1 10 9.7 8.5 7.2 6.2 5.1 3.9 3.1 2.5 2.0 1.6 1.3 1.0 0.7 0.5 0.2 0.4 0.7 1.4 3.0 4.7 6.4 7.7	
> High East Kilbride 5	[Bar chart]	[Bar chart]
Lowest surface temperature (°C)	6.2 10 9.7 8.1 7.2 6.3 5.2 4.1 3.2 2.4 2.1 1.7 1.3 0.9 0.6 0.4 0.1 0.3 0.7 1.4 3.0 4.7 6.4 7.7	
> High East Kilbride 6	[Bar chart]	[Bar chart]
Lowest surface temperature (°C)	9.1 10 11 10 8.7 7.5 6.4 5.3 4.1 3.3 2.7 2.2 1.8 1.5 1.2 0.9 0.6 0.3 0.5 0.9 1.6 3.1 4.8 6.4 7.4	
> High East Kilbride 7	[Bar chart]	[Bar chart]
Lowest surface temperature (°C)	9.6 10 11 10 9.2 7.8 6.7 5.6 4.4 3.6 3.0 2.5 2.0 1.6 1.3 1.0 0.7 0.4 0.6 0.9 1.6 3.2 5.0 6.6 8.3	
> High Elvanfoot 1	[Bar chart]	[Bar chart]
Lowest surface temperature (°C)	9.2 9.5 9.2 8.7 7.8 5.4 4.1 2.9 1.8 1.1 0.7 0.4 0.1 0.3 0.6 0.1 -0.1 -0.3 -0.6 -0.6 0.1 1.8 3.4 4.8 7.4	
> High Elvanfoot 2	[Bar chart]	[Bar chart]
Lowest surface temperature (°C)	9.3 9.8 10 9.7 7.1 6.8 5.4 4.1 2.9 1.9 1.4 1.1 0.8 0.5 0.3 0.2 -0.1 -0.3 0.1 0.7 2.2 3.8 5.6 7.5	
> High Larkhall 1	[Bar chart]	[Bar chart]
Lowest surface temperature (°C)	9.1 10 9.9 8.3 6.9 5.8 4.6 3.4 2.6 2.1 1.7 1.4 1.0 0.7 0.5 0.1 -0.2 0.3 0.7 1.5 3.1 4.9 6.5 8.6	
> High Larkhall 2	[Bar chart]	[Bar chart]
Lowest surface temperature (°C)	9.1 10 9.5 8.2 6.8 5.8 4.4 3.1 2.2 1.6 1.2 0.9 0.6 0.3 0.2 -0.1 -0.4 -0.6 -0.3 0.2 1.8 2.5 4.4 5.9 7.7	
> High Larkhall 3	[Bar chart]	[Bar chart]
Lowest surface temperature (°C)	9.0 9.9 10 9.5 8.2 7.8 5.8 4.6 3.4 2.6 2.1 1.8 1.5 1.0 0.7 0.4 0.1 -0.1 0.1 0.7 1.4 2.9 4.6 6.2 7.6	
> High Larkhall 4	[Bar chart]	[Bar chart]
Lowest surface temperature (°C)	9.6 11 10 8.5 7.4 6.5 5.4 4.3 3.3 2.7 2.3 1.9 1.4 1.0 0.7 0.4 0.1 0.3 0.7 1.5 3.1 4.9 6.5 8.2	
> High Larkhall 5	[Bar chart]	[Bar chart]
Lowest surface temperature (°C)	6.1 10 9.9 8.4 7.2 6.2 5.1 4.0 3.1 2.6 2.2 1.7 1.3 1.0 0.7 0.4 0.1 0.3 0.7 1.5 3.1 4.7 6.3 7.7	
> High Larkhall 6	[Bar chart]	[Bar chart]
Lowest surface temperature (°C)	9.3 10 11 10 8.7 7.4 6.5 5.3 4.1 3.3 2.7 2.3 1.8 1.4 1.1 0.7 0.5 0.3 0.4 0.8 1.5 2.9 4.6 6.4 7.8	
> High Lesmahagow 1	[Bar chart]	[Bar chart]
Lowest surface temperature (°C)	9.7 10 11 9.8 8.5 6.8 5.7 4.2 2.9 2.0 1.4 1.1 0.8 0.4 0.1 -0.2 -0.5 -0.7 -0.4 0.3 1.1 2.7 4.6 6.1 7.4	
> High Lesmahagow 2	[Bar chart]	[Bar chart]
Lowest surface temperature (°C)	6.1 10 9.4 8.1 6.8 5.5 4.2 2.9 2.0 1.5 1.2 0.9 0.5 0.2 0.0 -0.3 -0.5 -0.2 0.3 1.3 2.9 4.8 6.3 7.4	
> High Lesmahagow 3	[Bar chart]	[Bar chart]
Lowest surface temperature (°C)	8.4 10 11 9.9 8.9 7.5 5.9 4.3 3.3 2.5 1.7 1.3 0.9 0.6 0.3 0.1 -0.2 -0.5 -0.1 0.3 1.3 3.0 4.4 6.4 8.1	

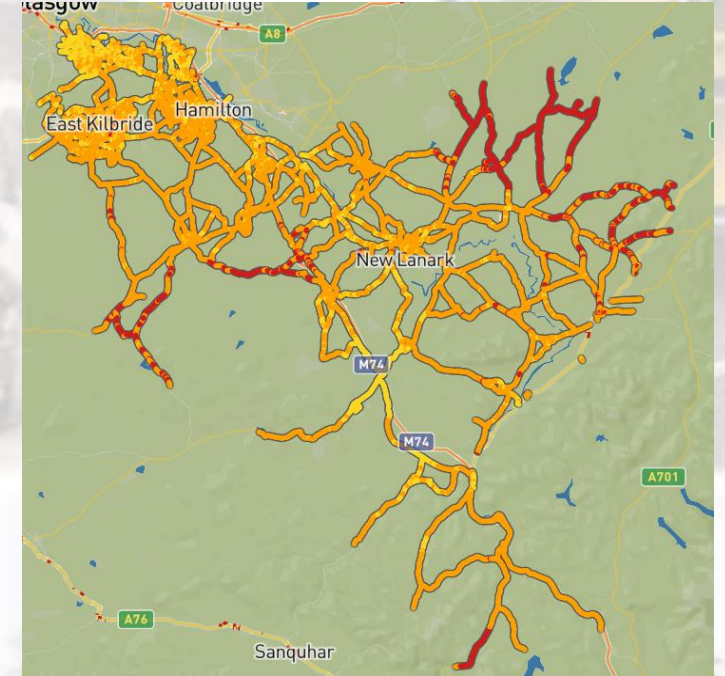
Route Based Forecasting - After



**3rd Nov 2021
01:00**



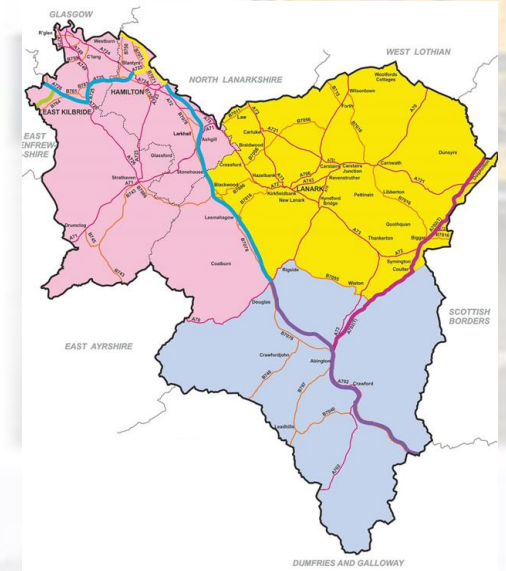
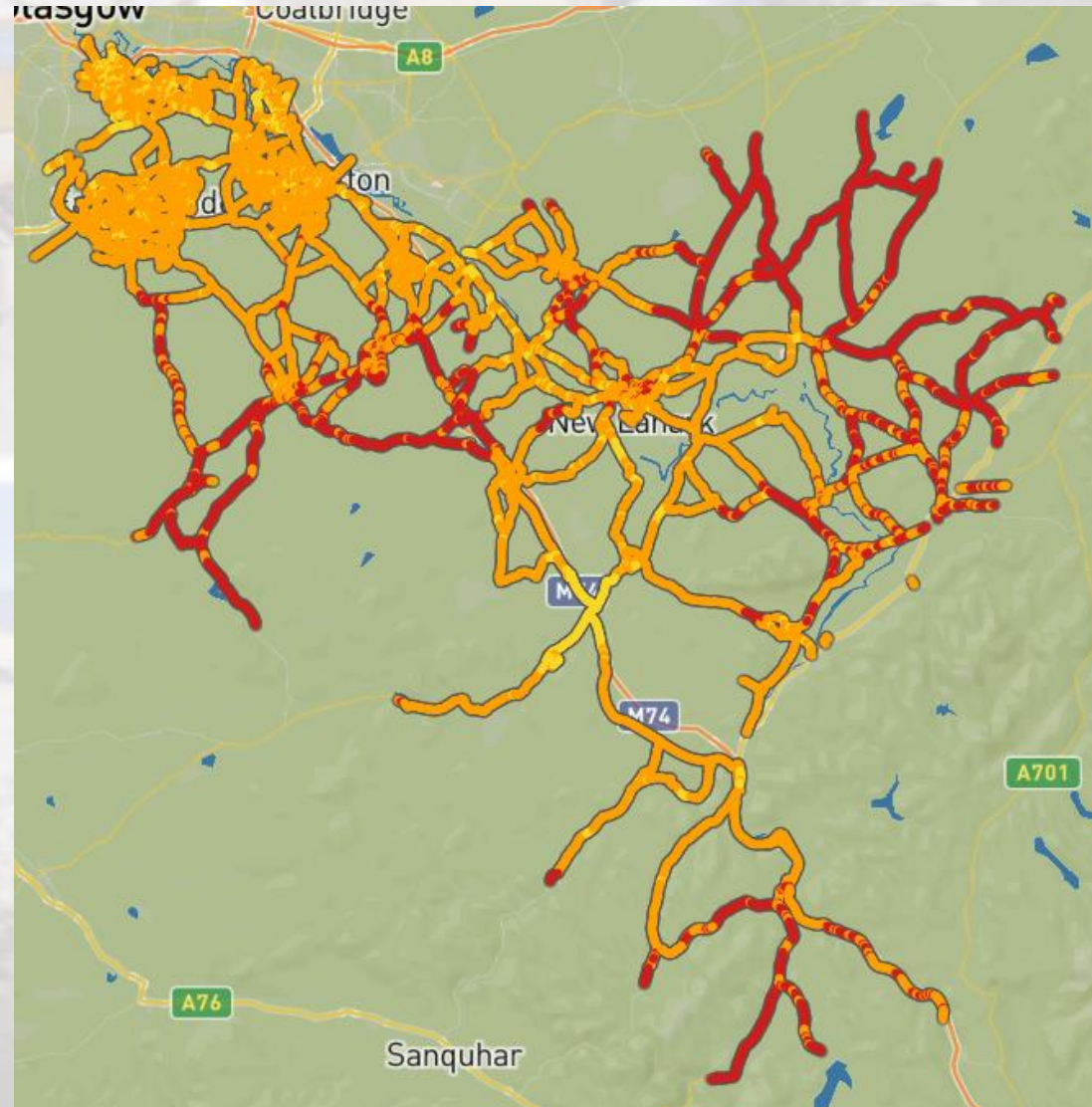
**3rd Nov 2021
03:00**



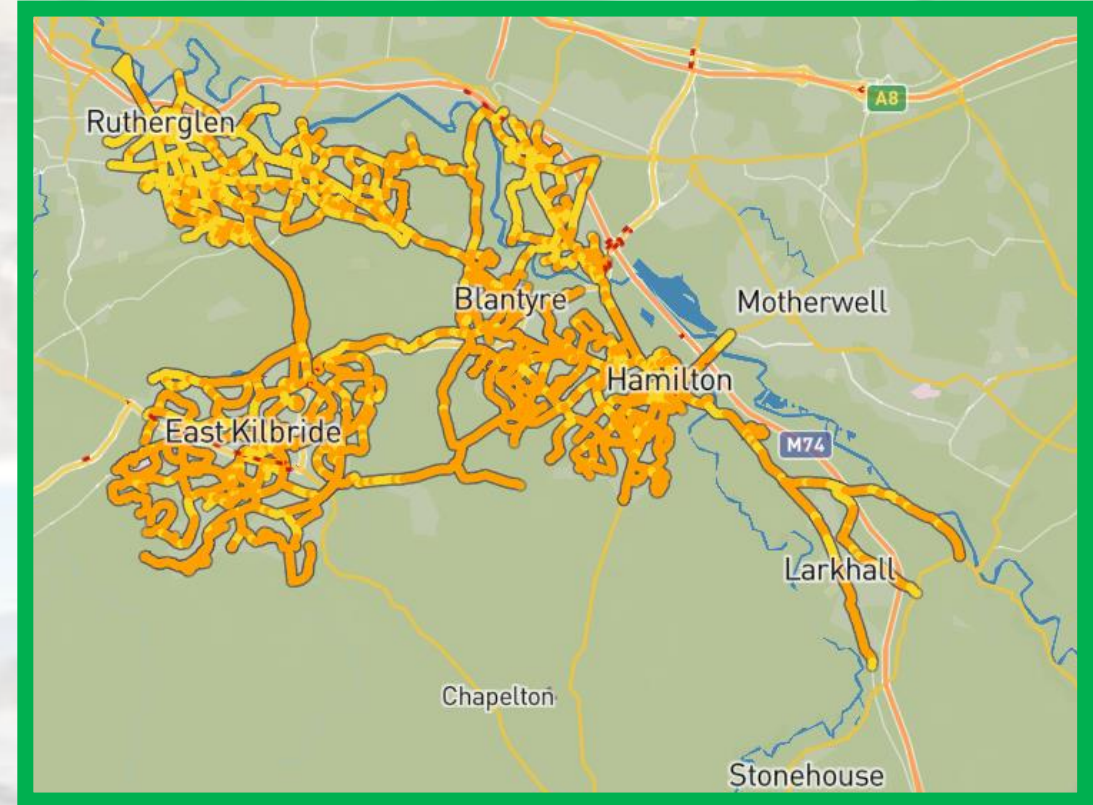
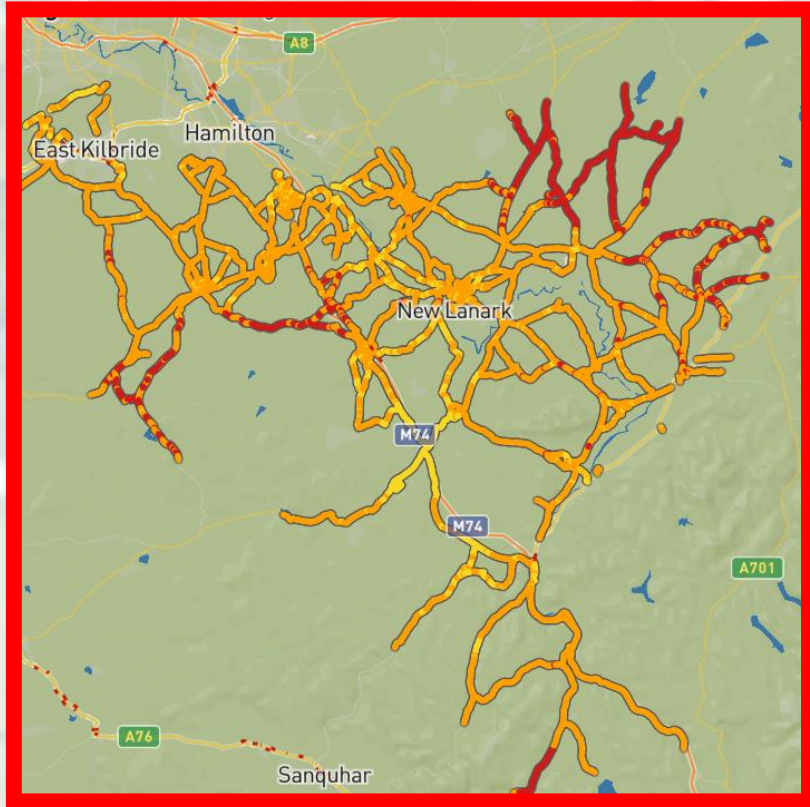
**3rd Nov 2021
05:00**

Route Based Forecasting

3rd Nov 2021
06:00



Where did we treat?



14 out of 23 routes treated saving around £5,000

Winter Assistance

- **Other Council Resources**
- **Local Farmers**
- **Construction Contractors**
- **Community Councils**
- **General Public**





?



Any Questions?