

Glasgow Pollinator Plan & Green Connectors



Seamus Connolly
Group Manager
Neighbourhoods, Regeneration and
Sustainability
Glasgow City Council



Rationale – Why Now?

Pollinator Plan

Green Connectors – Wildflower Action Plan

Pollinator Parks

Collaboration & Engagement



Why Now?

State of Nature Report 2019

Climate & Ecological Emergency
Declaration – Approved Climate Plan

Managing Resources

COP26



Our Climate Plan



Theme 1: Communication and Community Empowerment

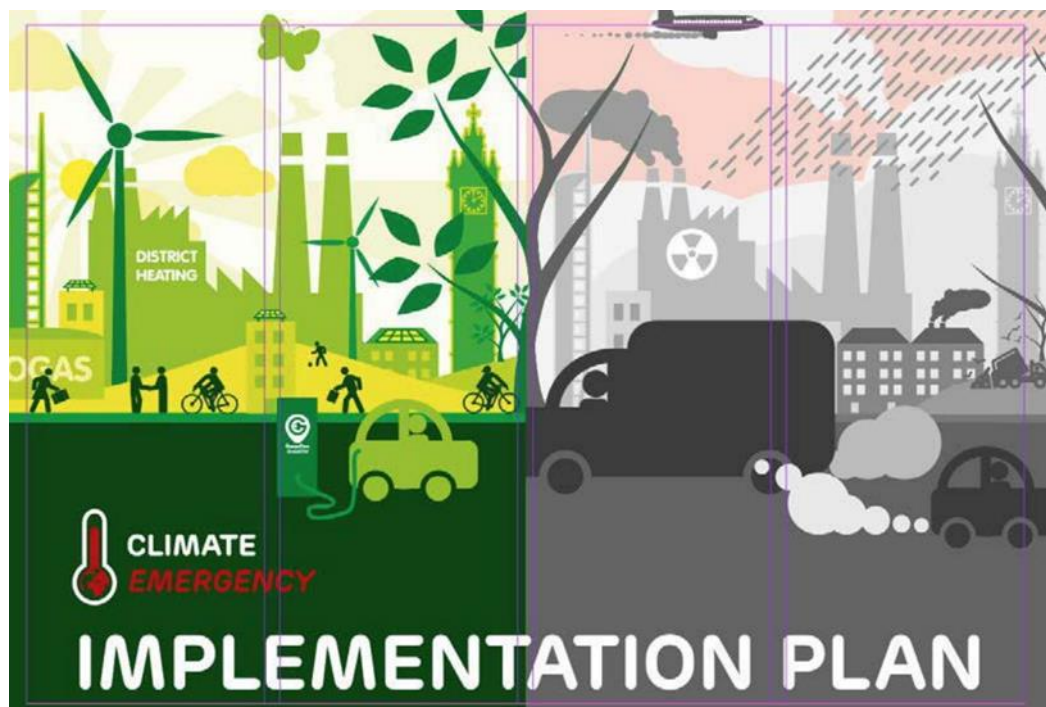
Theme 2: Just and Inclusive Place

Theme 3: Well Connected and Thriving City

Theme 4: Health and Wellbeing

Theme 5: Green Recovery





Theme 4: Health and Wellbeing

Implement the Glasgow and Clyde Valley Green Network's Blueprint to create green & biodiversity corridors in the city by improving open space provision and increasing tree cover.

Expand Local Nature Reserves in the city and protect wider areas of open space in the city for greening and public use.

Identify Vacant and Derelict Land for greening and rewilding in combination with renewable energy generation measures.

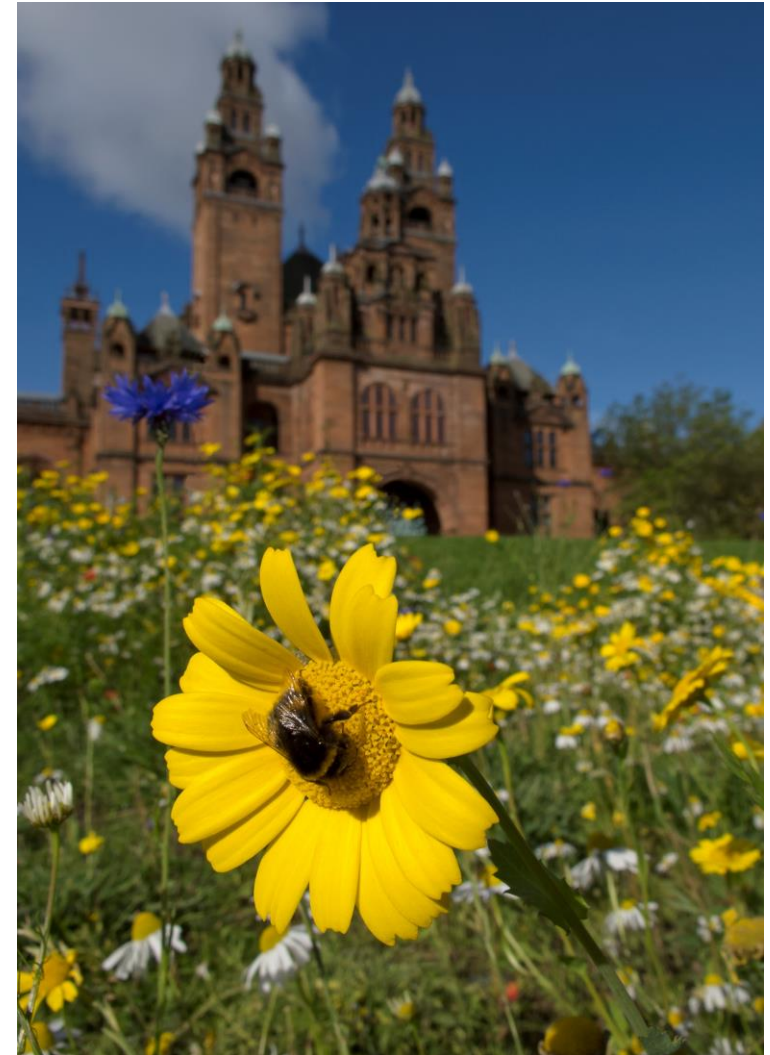


Pollinator Plan runs from 2017-2027

Supports National Pollinator Strategy

**Incorporated into Local Biodiversity
Action Plan**

**Collaboration with Butterfly
Conservation (Scotland), Buglife,
Bumblebee Conservation Trust and
others**



Managing grasslands to become flower-rich meadows

Improving tree cover to develop copse and woodland habitats

Hedgerow and woodland edge as habitats and active travel corridors for wildlife

Improving and expanding wetland habitats where required
– building and learning from the metropolitan drainage programme and integrated green networks

Pollution – *using nature-based solutions to reduce air and noise pollution in key locations and also deliver benefits for pollinators*



Five year phased approach

**Mapping/Locations available on
online Via App**

Ability to recommend new locations

Carbon Capture –Sequestration

**Fuel Reduction – Machine Use and
Vehicles**

Climate Ready Modern Apprenticeship



Wildflower Meadows & Bulb Planting

Carry out ecological site surveys

Introduce new varieties if required

Plug planting

Rotovate and sow seed



Wildflower Action Plan

► What are Green Connector Sites?

► Why do Green Connectors matter?

Under the Nature Conservation (Scotland) Act 2004, Glasgow City Council has a legal duty '*...to further the conservation of biodiversity...*' One of the best ways to do so is through the protection, creation and enhancement of habitats.

Glasgow's Local Biodiversity Action Plan and Pollinator Plan set out actions to help our city's wildlife further information can be found at

[Glasgow Biodiversity](#)

Biodiversity and nature-based solutions play a vital role in combating climate change and in providing mental and physical health benefits for all of us.

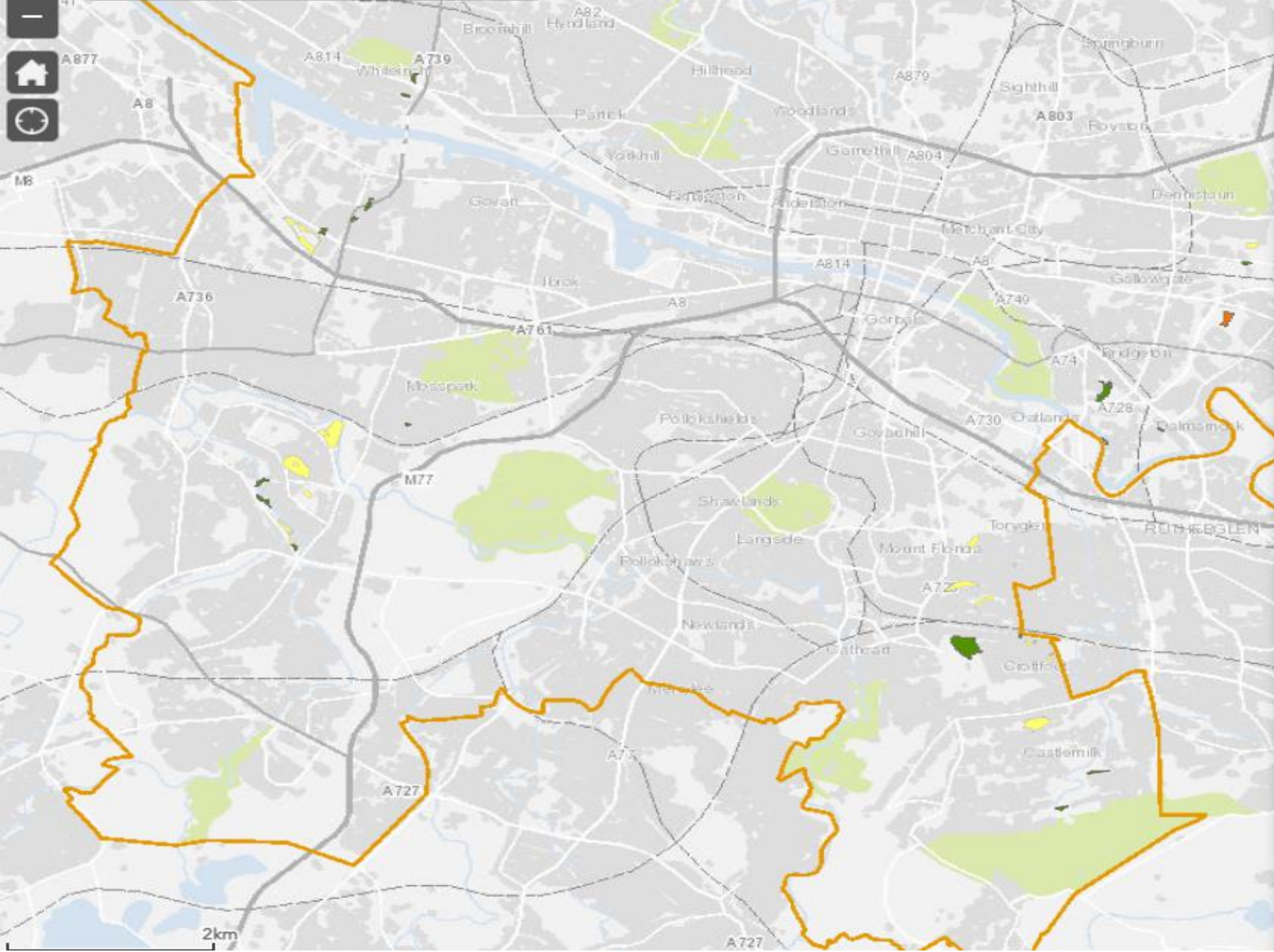
► What will I see there?

► Will it be cut?

► Do these sites need chemicals and fertilisers?



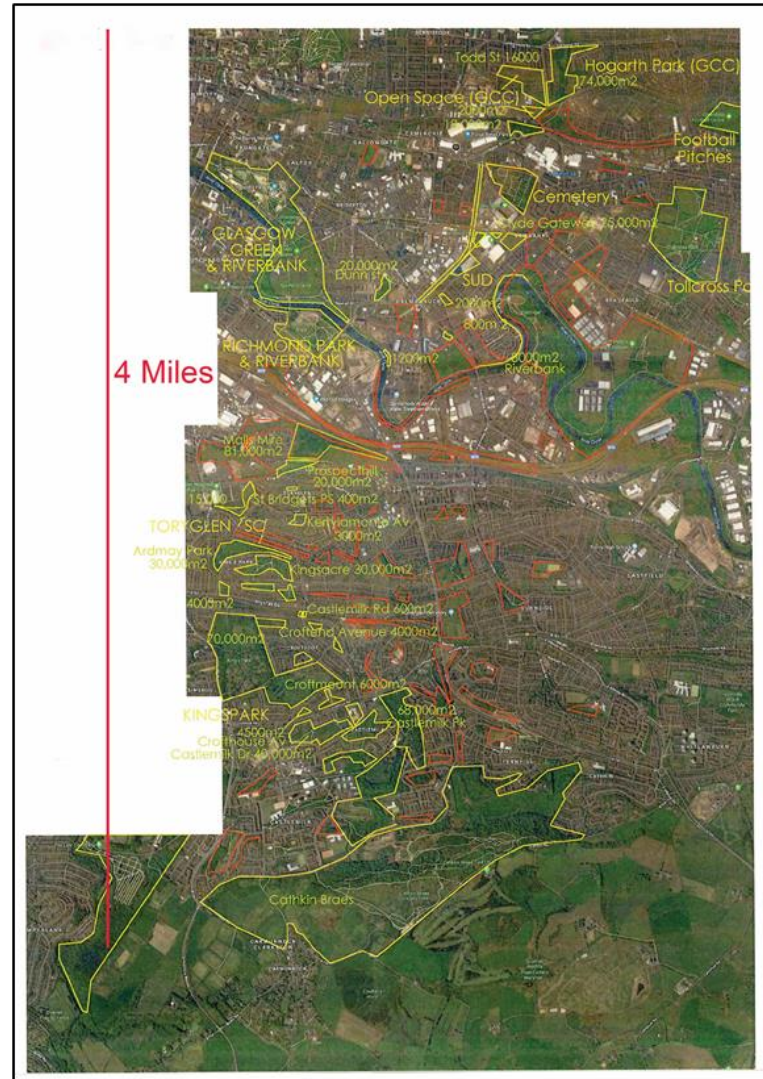
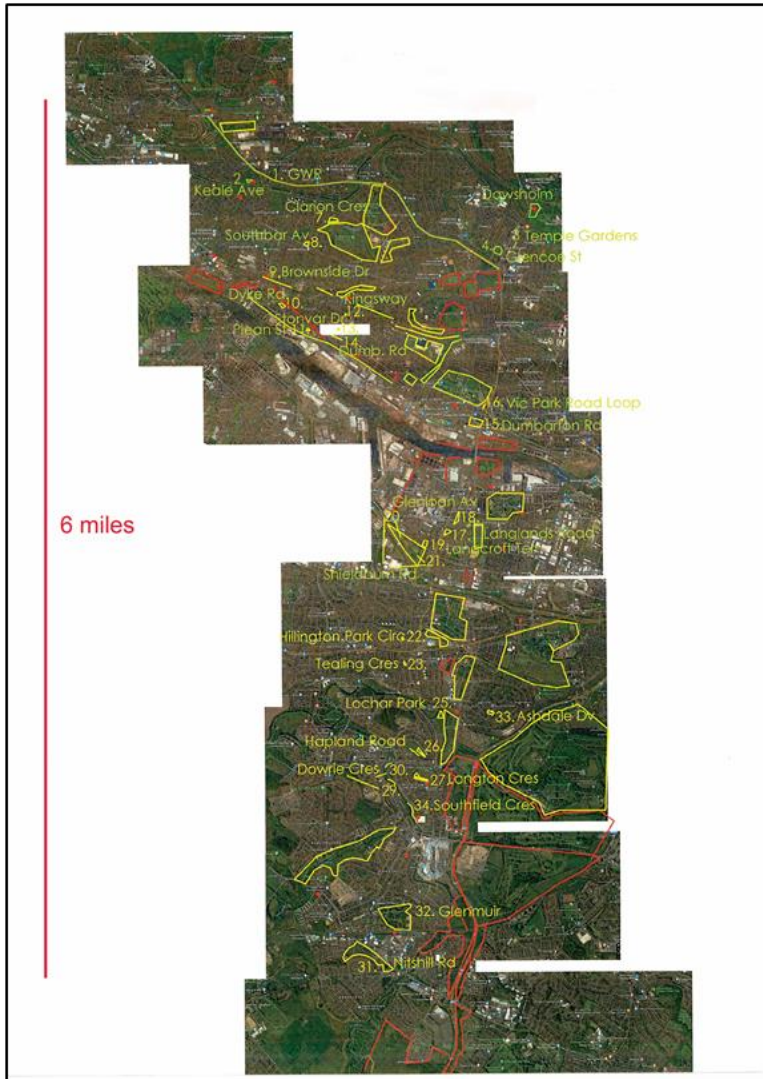
Enter an address



Legend

- Wildflower_Planting - Wildflower 5 year plan by planting type**
- Bulbs
 - TBC
 - Whips
 - Wildflower_Plugs
 - Wildflower_Plugs_Bulbs
 - Wildflower_Seed
 - Wildflower_Whips
- Glasgow**
- City Boundary

Green Urban Connectors Project 2021 -2026



Area Totalling Approx.
740,290m²



Pollinator Parks

Ambitious new environmental plans will transform Queen's Park into 'pollinator park'



By Catriona Stewart | [@LadyCatHT](#)
Columnist/reporter



Queen's Park Picture: Colin Mearns



QUEEN'S Park is to be designated a 'pollinator park' in a bid to further tackle climate change and boost Glasgow's green credentials.

It will be the second pollinator park in the city - after Hogganfield Park - to benefit from extra resources to make the green space perfect for diverse insects, birds and small mammals,

Council bosses are looking at "extensive" bulb planting for the park, the creation of wildflower meadows, extra tree planting and even increases **food** growing.

Councillor Anna Richardson, City Convener for Sustainability and Carbon Reduction, said: "Glasgow's declaration on a climate and ecological emergency makes it essential we do everything we can to support the city's

Most read

-  Ally McInnes: 'no chance' of making management changes
-  Celtic FC: Hartsorn Lennor Catholic fan support
-  Free school meals: £125 Sp in Glasgow your choice
-  Two teenagers: crash with Lanark

30,000 Sqm wildflower meadows

Three year bulb planting programme

1.2 hectares of tree planting



The Conservation Volunteers

Butterfly Conservation (Scotland)

BugLife

RSPB (Scotland)

Friends of Groups

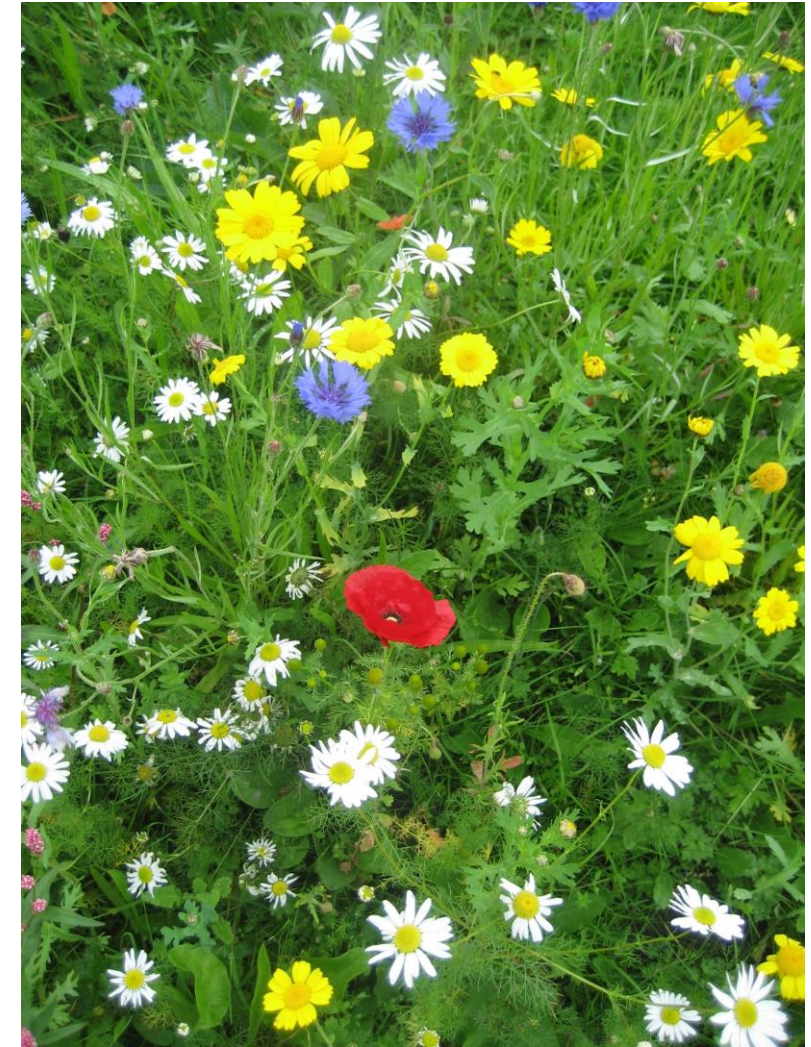
GCC Neighbourhood Services



Flower Power Nursery – hours for flowers

**Friends of Parks & Greenspaces-
Participatory Budgeting and Wee
Green Grants**

**Biodiversity Monitoring Reports and
Biodiversity Duty Reports**



Social Media Updates

**Elected
Member/Community
Updates**

Signage

LBAP updates



www.glasgow.gov.uk/parklife



Questions

