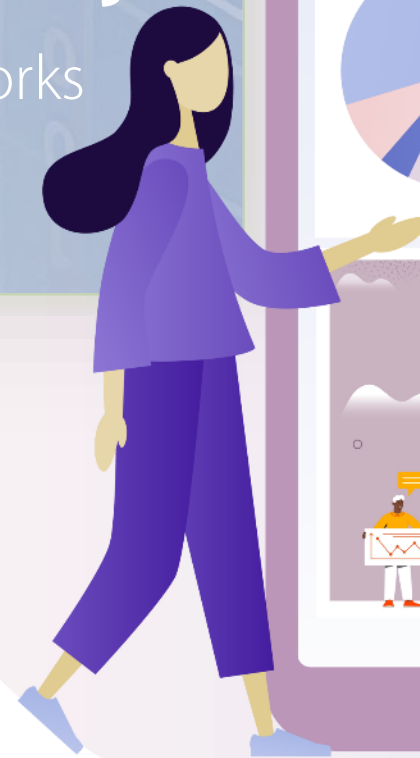


# APSE Northern Ireland Benchmarking Project

Debbie Johns | APSE Head of Performance Networks



# UK-wide issues





# Expenditure

|                   |   | Since 21-22 |
|-------------------|---|-------------|
| Street cleansing  | Cost of street cleansing service per household        | +19%        |
| Refuse collection | Cost of refuse collection service per household       | +18%        |
| Parks             | Maintenance investment per hectare of maintained land | +15%        |



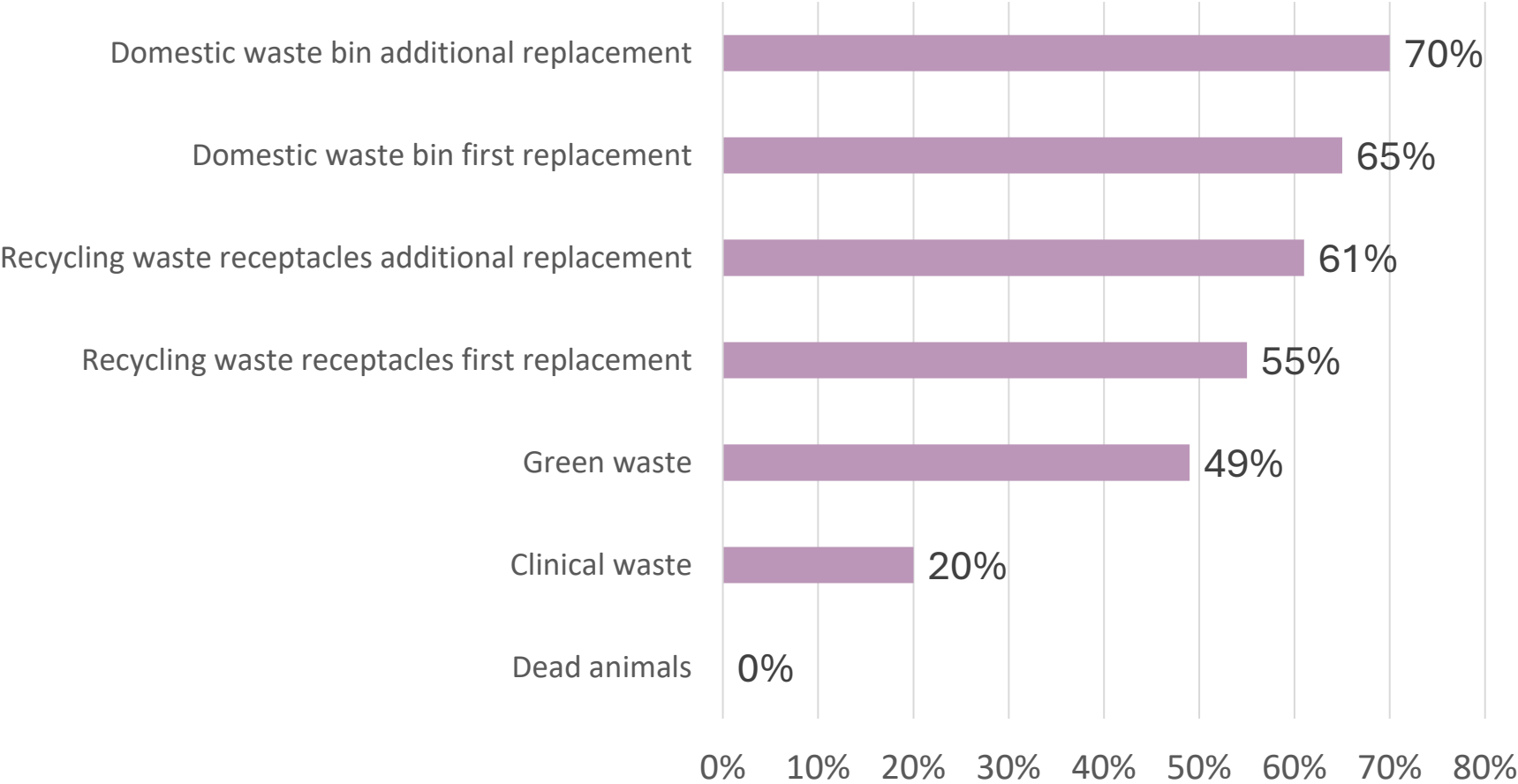
# Income

|                  |   |        |
|------------------|---|--------|
| Parks            | % operational expenditure covered by discountable income and external funding | 11.68% |
| Street cleansing | % operational expenditure covered by discountable income                      | 2.53%  |

| Since 21-22       |                                    |     |
|-------------------|------------------------------------|-----|
| Parks             | Discountable / non-contract income | 38% |
| Refuse collection | Discountable / non-contract income | 3%  |



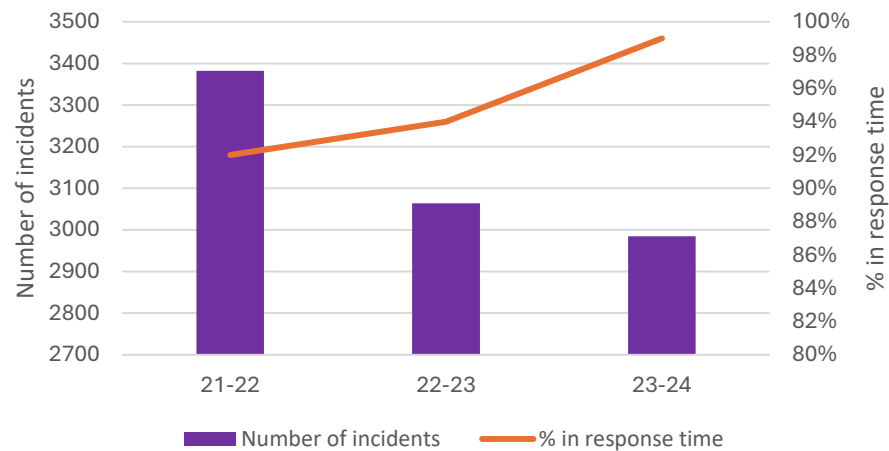
% who charge for the following services (refuse collection)



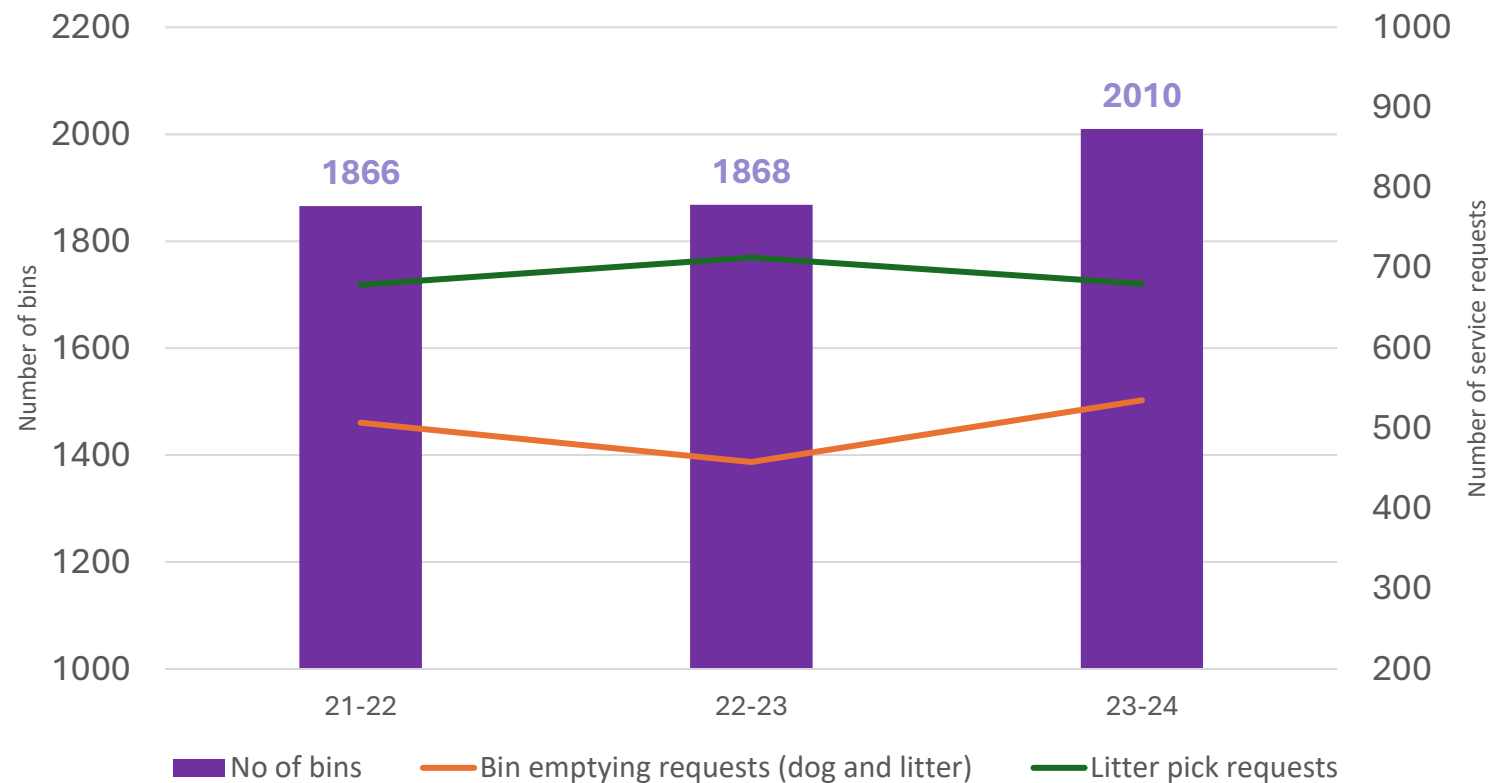


# Street cleansing continuing demands on service

Fly-tipping



Dealing with litter and dog waste

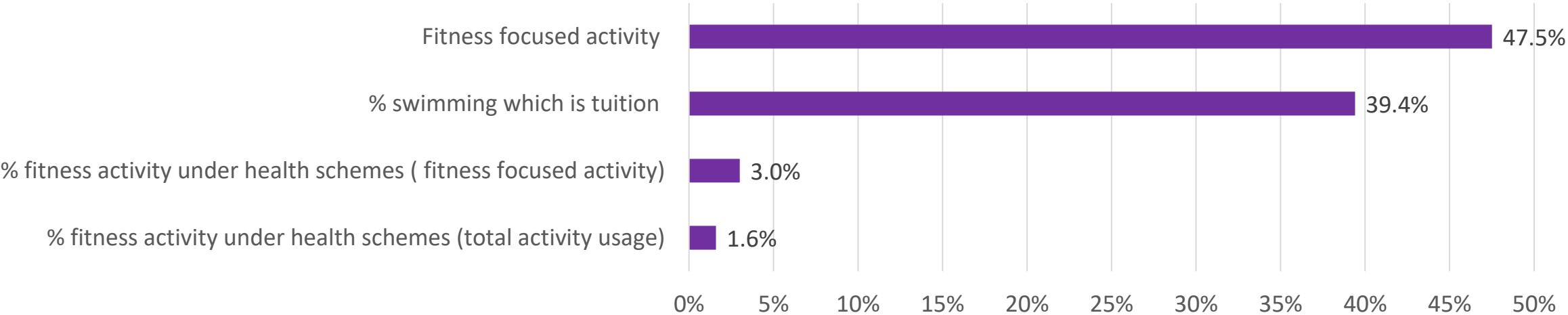




# The changing face of leisure

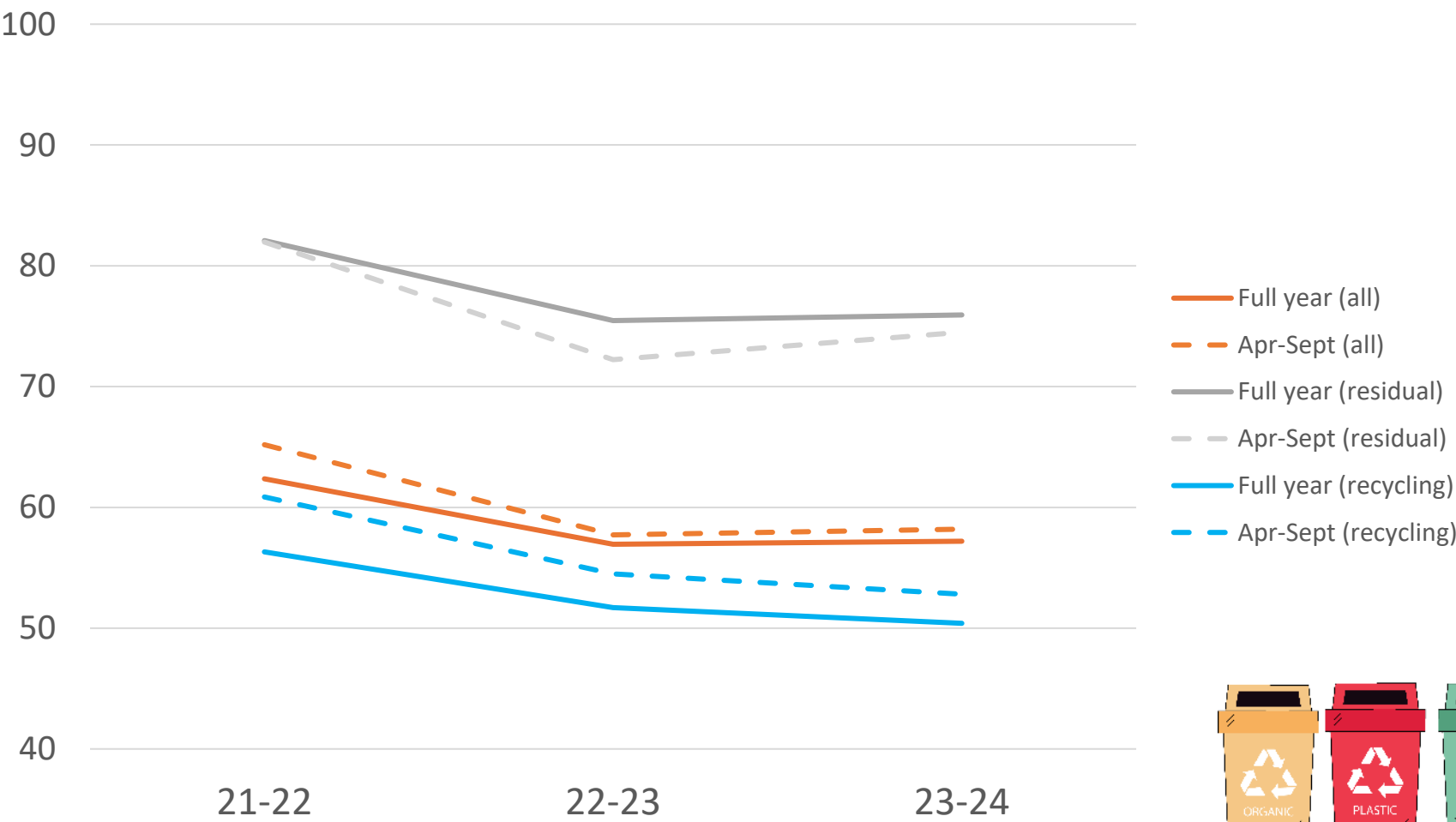


|                      | 21-22    | 22-23      | 23-24      |
|----------------------|----------|------------|------------|
| Expenditure increase |          |            | 7.80%      |
| Energy cost          | £131,471 | £270,921   | £271,344   |
| Usage recovery       | 223,841  | 302,633    | 332,139    |
| Income recovery      | £772,568 | £1,048,570 | £1,231,020 |
| Opening hours        | 4,700    | 4,738      | 4,711      |
| Staffing hours       | 37,230   | 38,507     | 37,911     |





# Missed bin collections





Litter

Flytipping

Dog fouling

Bins overflowing

Bin structure

Litter and  
detritus

Detritus

Graffiti

Staining / Gum

Fly posting

Hard surface  
weeds

Bin cleanliness



Grounds  
maintenance

Litter

Flytipping

Dog fouling

Bins overflowing

Bin structure

Bin cleanliness

Hard surface  
weeds

Grass  
cutting

Shrub bed  
maintenance

Fly posting





# Recruitment and retention

|                                  | % vacancies | % filled | % stayed beyond<br>probation,<br>induction and<br>training | % leavers |
|----------------------------------|-------------|----------|--|-----------|
| Parks                            | 12%         | *96%     | 97%  | 6%        |
| Refuse drivers                   | 11%         | 71%      |  |           |
| Refuse loaders                   | 12%         | 63%      |  |           |
| Street cleansing                 | 16%         | 63%      | 98%  | 12%       |
| Cemetery and<br>crematorium      | 5%          | 63%      | 100%   | 7%        |
| Leisure recreation<br>assistants | 31%         | 83%      | 86%  |           |

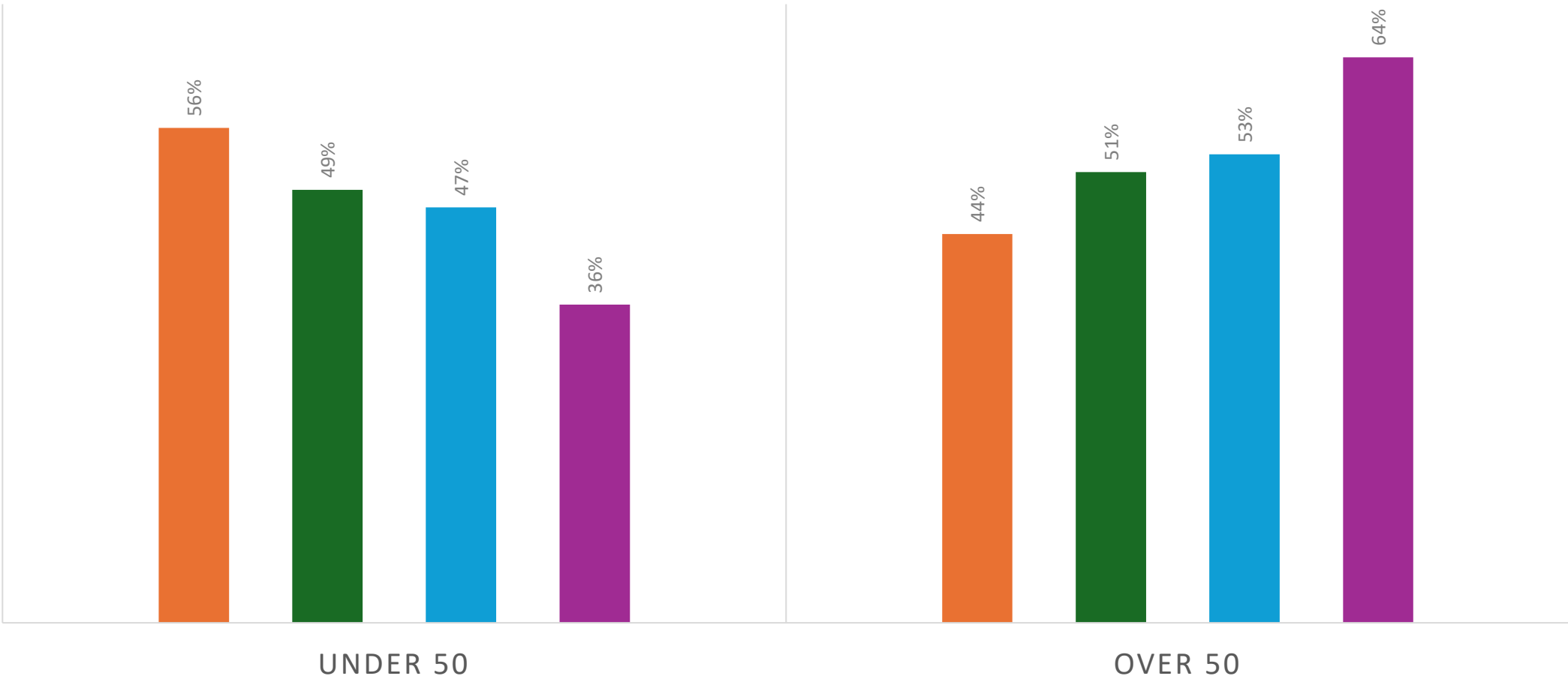
\*from those  
advertised





# Age profile of the workforce

Refuse collection   Parks   Cemetery and crematorium   Street cleansing





75% have an identified budget for tree maintenance

94% of a quarter of a million new trees planted were new schemes

18% is the average current canopy

22% is the average target canopy



43% councils have new or ongoing BNG projects

67% intend to go fully peat free

36% have a 'Pollinator' strategy



14% sweepers (vehicles) are neither petrol or diesel

42% of motorised pedestrian sweepers are electric or battery



9% of refuse fleet is on alternative fuels

20% have at least 1 electric vehicle



32% have any forms of renewable energy sources

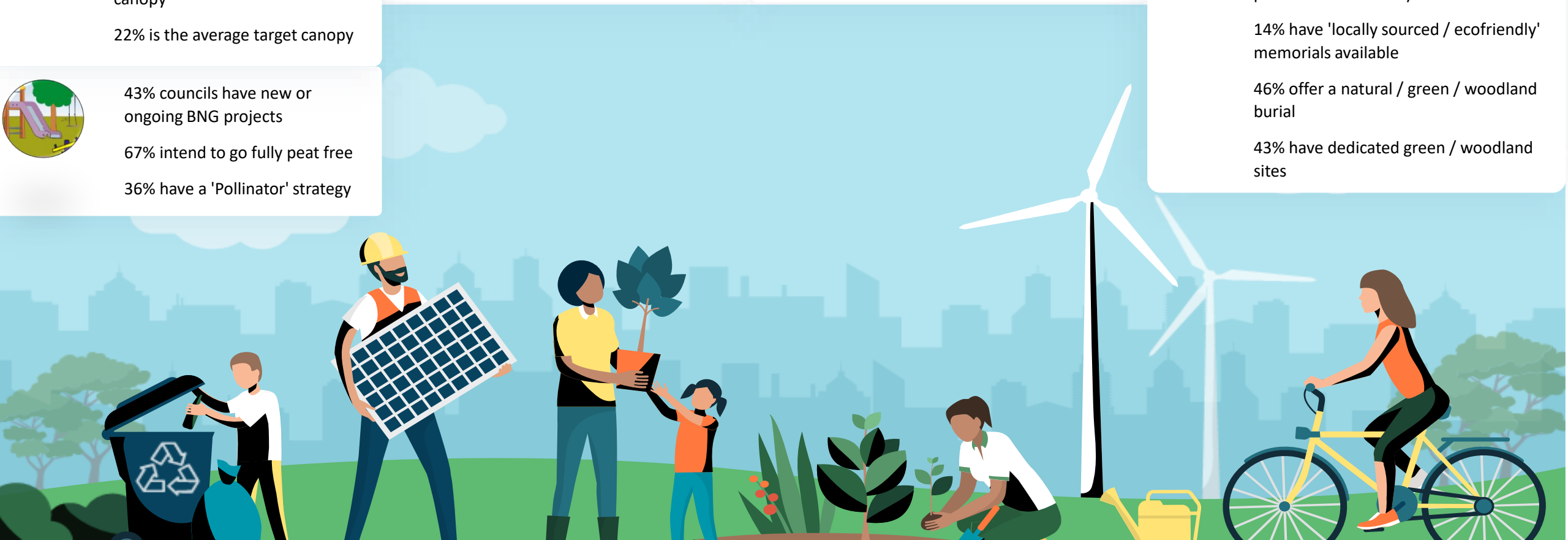
81% re-use energy generated by the cremation process

82% manage grounds in a manner which promotes biodiversity

14% have 'locally sourced / ecofriendly' memorials available

46% offer a natural / green / woodland burial

43% have dedicated green / woodland sites





# Environmental sustainability

| The average who....                                    | Parks | Street<br>cleansing |
|--|-------|---------------------|
| Have a weed control policy                             | 58%   | 63%                 |
| Use glyphosate   | 88%   | 81%                 |
| Reduced the amount of glyphosate used from 5 years ago | 73%   | 56%                 |
| What has this on average reduced by?                   | 55%   | 54%                 |



# Environmental sustainability

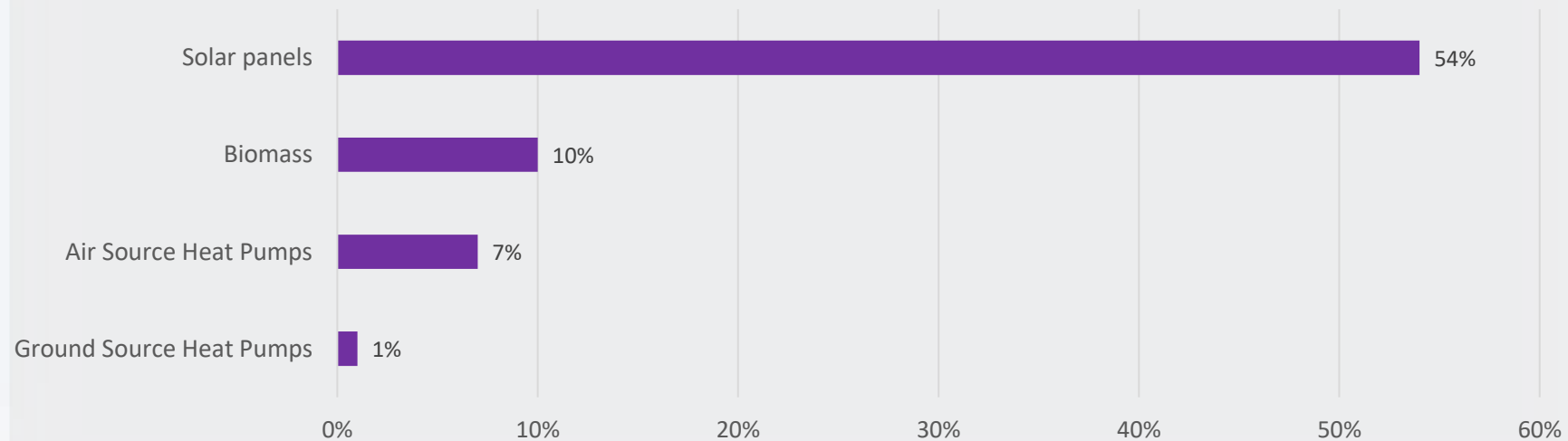


61% use renewable energy sources

75% cover swimming pools at night

31% use 'Heat recycling pump' technology

## Sports and leisure renewable energy sources



# Northern Ireland project





# Services covered



Arts and heritage



Building control



Cemetery services



Community development



Core Performance Indicators



Corporate services



Economic development



Environmental Health



Parks open spaces and horticultural



Refuse collection



Sports and leisure



Street cleansing

[www.apse.org.uk](http://www.apse.org.uk)

*plus Planning*

## Northern Ireland Core Performance Indicators



## Internal Performance Indicators

Recruitment and retention

Staff absence

Staff training

Customer satisfaction for whole  
council

Customer complaints

Other Internal PI's

## External Performance Indicators

Customer satisfaction for Parks

Invoicing

Other External PI's



## Key PI's

20-21

21-22

22-23

23-24

Average for  
service

Average for  
service

Average for  
service

Average for  
service

### Performance indicator

#### Arts & Heritage

PI 01a - Net cost of direct delivery for venue-based Arts and Heritage events per head of population (excluding CEC\*)

£6.82

£7.97

£9.14

£11.22

#### Building Control

PI 02 - Percentage of valid non domestic full plan applications assessed with a substantive response sent within 35 days of validation

73.29%

82.61%

76.96%

80.48%

#### Community Development

PI 06a - Total cost of staff and direct operational expenditure per head of population

£7.60

£8.39

£10.48

£9.01

PI 12d - Net investment for the 3 community support services per head of population (excluding CEC\*)

£2.66

£4.88

£4.31

£5.75



# Key PI's

## Performance indicator

|  | 20-21               | 21-22               | 22-23               | 23-24               |
|--|---------------------|---------------------|---------------------|---------------------|
|  | Average for service | Average for service | Average for service | Average for service |
| <b>Corporate Services</b>  |                     |                     |                     |                     |
| <b><i>Organisational development / human resources (OD / HR)</i></b>           |                     |                     |                     |                     |
| PI 01b - Staffing cost per employee  | £859                | £841                | £915                | £1012               |
| <b><i>Information and communications technology (ICT)</i></b>                  |                     |                     |                     |                     |
| PI 07a - Cost of ICT service per head of population                            | £5.72               | £5.27               | £6.12               | £6.85               |
| <b><i>Registration services</i></b>  |                     |                     |                     |                     |
| PI 12a - Gross cost of Registration Service per head of population             | £1.43               | £1.42               | £1.67               | £1.86               |
| PI 47a - Net cost of Registration Service per head of population               | £0.08               | -£0.15              | £0.08               | -£0.01              |
| <b><i>Legal Services</i></b>   |                     |                     |                     |                     |
| PI 14a - Cost of Legal Services per head of population                         | £1.90               | £1.94               | £2.06               | £2.32               |
| <b><i>Training / learning</i></b>  |                     |                     |                     |                     |
| PI 18a - Percentage of budget (overall net expenditure) on Training / Learning | 0.16%               | 0.25%               | 0.26%               | 0.29%               |
| PI 21a - Number of days per employee spent on training                         | 0.82                | 0.86                | 1.17                | 1.54                |



# Key PI's

## Performance indicator

|   | 20-21               | 21-22               | 22-23               | 23-24               |
|---|---------------------|---------------------|---------------------|---------------------|
|   | Average for service | Average for service | Average for service | Average for service |
| <b>Finance and financial services</b>   |                     |                     |                     |                     |
| PI 24a - Cost of Financial Services per employee  | £1,410              | £1,414              | £1,505              | £1,467              |
| PI 25a - Payroll cost per employee per annum  | £267.53             | £293.31             | £273.62             | £294.06             |
| PI 28a - Percentage underspend / overspend on budgets at year end (negative figure indicates % overspend) | 7.10%               | 8.26%               | 0.10%               | 2.73%               |
| PI 29a - Total energy costs per annum (annual council expenditure on energy) per head of population       | £6.87               | £9.71               | £19.17              | £14.15              |
| PI 31a - Percentage of undisputed creditor invoices paid on time within 30 days                           | 86.19%              | 91.08%              | 86.51%              | 87.42%              |
| <b>Complaints</b>   |                     |                     |                     |                     |
| PI 34b - Number of complaints received per 1,000 head of population                                       | 0.32                | 0.21                | 0.26                | 0.38                |
| PI 36a - Percentage of complaints rectified within target time  | 80.85%              | 72.07%              | 71.54%              | 74.33%              |
| <b>Cost of services</b>   |                     |                     |                     |                     |
| PI 38a - Net cost of council service per head of population   | £329.43             | £338.74             | £373.28             | £384.01             |



# Key PI's

|   | 20-21               | 21-22               | 22-23               | 23-24               |
|---|---------------------|---------------------|---------------------|---------------------|
| Performance indicator   | Average for service | Average for service | Average for service | Average for service |
| <b>Environmental Health</b>   |                     |                     |                     |                     |
| PI 01b - Percentage of service requests responded to within 3 days  | 93.98%              | 93.81%              | 92.66%              | 95.31%              |
| PI 05a - Percentage of general planning applications processed within 15 working days of receipt by Environmental Health  | 77.93%              | 68.88%              | 73.71%              | 71.37%              |
| PI 02c - Net cost of the 5 core services per head of population (excluding CEC*)  | £7.58               | £7.75               | £8.47               | £8.59               |
| <b>Food Hygiene</b>   |                     |                     |                     |                     |
| PI 03a - Percentage of premises within the scope of the Food Hygiene Scheme that meet the standard of 'broadly compliant' | 99.39%              | 99.27%              | 98.80%              | 98.94%              |
| PI 06a - Percentage of planned inspections carried out within 28 calendar days for higher priority premises (Cat A and B) | 40.33%              | 64.15%              | 80.75%              | 88.62%              |
| <b>Refuse Collection</b>  |                     |                     |                     |                     |
| PI 01c - Cost of refuse collection service per household (excluding domestic waste disposal & CEC*)                       | £103.84             | £107.42             | £107.40             | £118.38             |
| <b>Sport &amp; Leisure - type 3</b>   |                     |                     |                     |                     |
| PI 13 - Net cost per head of population (excluding CEC*)  | £5.76               | £6.04               | £7.72               | £6.63               |
| PI 31 - Usage per opening hour  | 14.84               | 39.94               | 53.84               | 51.55               |
| <b>Street Cleansing</b>   |                     |                     |                     |                     |
| PI 02c - Total labour costs as a percentage of total expenditure (excluding CEC*)   | 74.55%              | 72.38%              | 73.29%              | 77.15%              |

## Corporate services



Declared climate emergency?  
Carbon reduction target?  
Energy usage  
Staff with carbon literacy training  
Renewable energy services  
Greenhouse gas emissions

## Leisure



Electricity, gas and water  
consumption

## Parks



Business in the Community enviro  
benchmarking survey  
EMAS environmental policy  
Biodiversity Action Plan  
Parks Habitat Action Plan  
Tonnage of green waste recycled  
Peat free policy  
Weed control  
Green apple award  
Tree management  
Carbon literacy training

## Refuse collection



Types of fuel for vehicles

## Street cleansing



Types of fuel for vehicles  
Green vehicles and equipment  
Weed control

## Cemeteries



Vehicle and plant fuel



# Developments

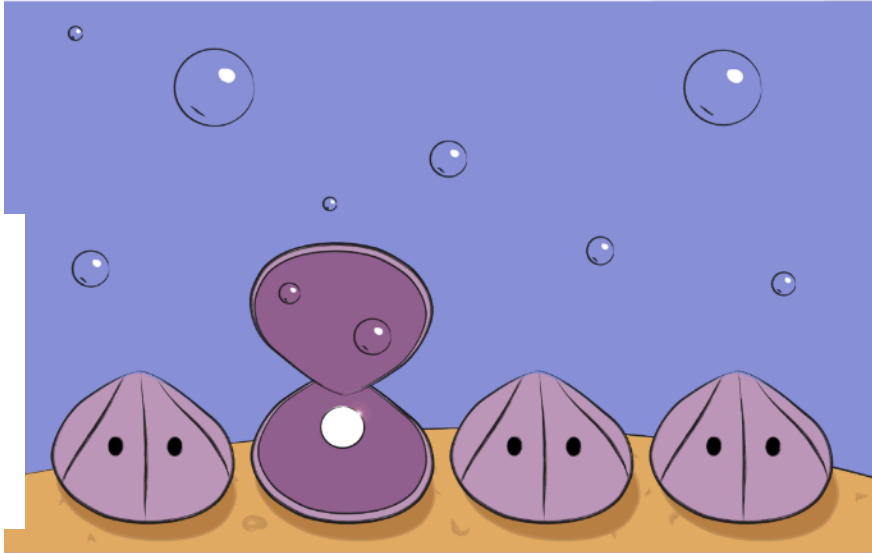


apse

# Inspection Apps



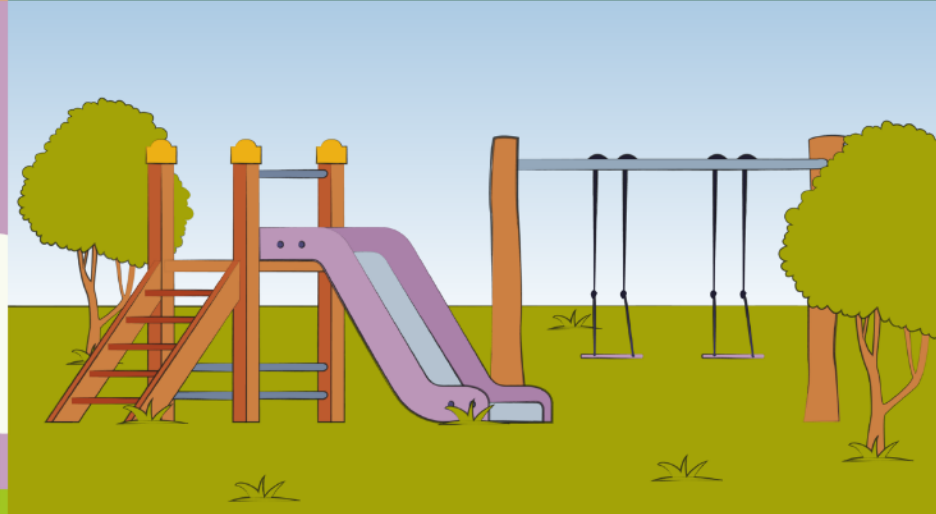
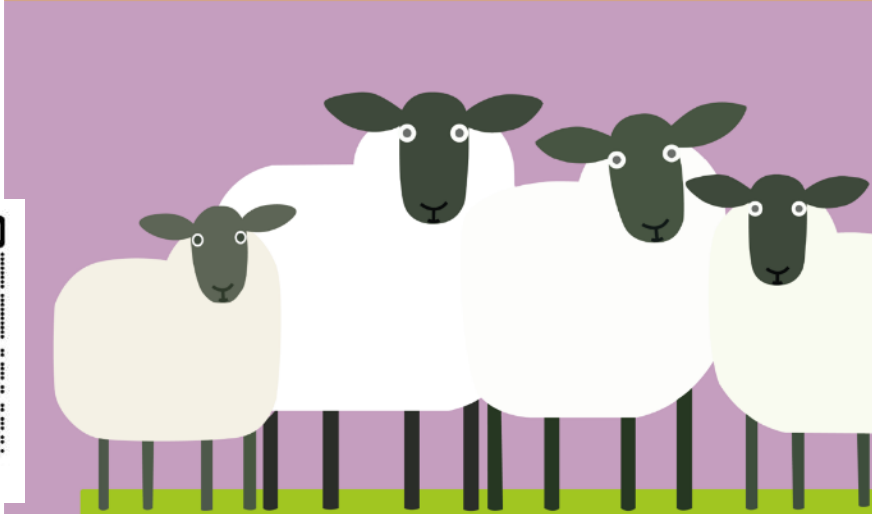
[bit.ly/APSECLAMS](https://bit.ly/APSECLAMS)



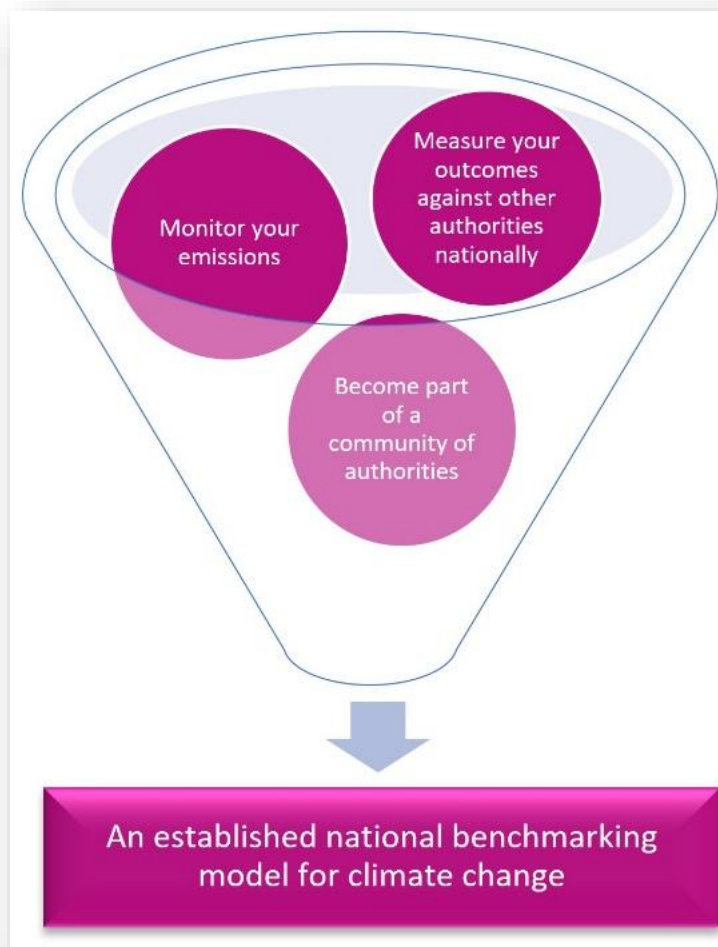
[bit.ly/40Cjptr](https://bit.ly/40Cjptr)



[bit.ly/APSECLAMS](https://bit.ly/APSECLAMS)



[bit.ly/3ZIOJMi](https://bit.ly/3ZIOJMi)



## Measure your progress on climate change: A free tool for APSE members

### Benefits of participation

Participatory councils will enjoy:

- ❖ Compare with similar UK-wide authorities in your family group
- ❖ Option for you to select your own list of authorities to compare with
- ❖ Identify good practice
- ❖ Raise the profile of any groundbreaking innovations
- ❖ Compare emissions
- ❖ Demonstrate your progress over time and how you compare with peers
- ❖ Drill into the individual service areas which APSE already monitor
- ❖ Receive comparative reports
- ❖ Become part of a community within networking groups

## Climate Change report





## Climate Change

### Authority filters

Authority hectareage

0

354,619

Authority population

0

1,200,000

Authority type

Unitary Council

Metropolitan  
Borough

London Borough

District Council

### Data filters

Net zero target year

All

Coastal percentage

0.00%

91.77%

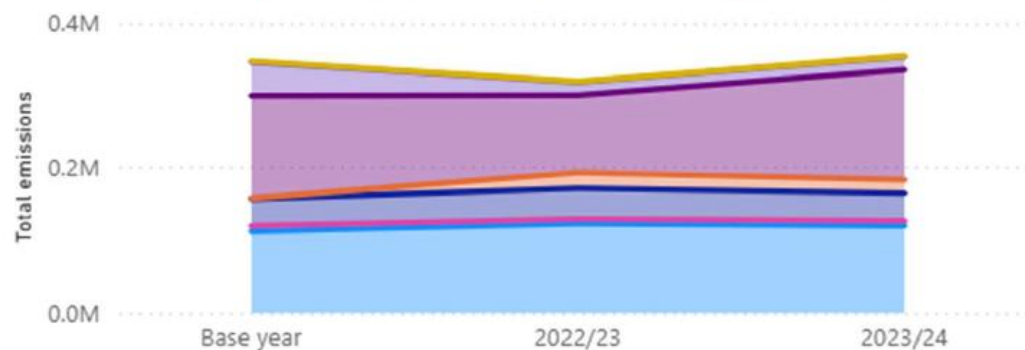
# Climate Change

## Overall council emissions

| Source of emissions          | Base year         | 2022/23           | 2023/24           | Total               |
|------------------------------|-------------------|-------------------|-------------------|---------------------|
| Other                        | 143,278.15        | 107,730.58        | 153,968.36        | 404,977.09          |
| Buildings                    | 110,561.14        | 121,378.73        | 118,251.87        | 350,191.74          |
| Fleet vehicles and equipment | 37,072.88         | 41,951.44         | 37,744.41         | 116,768.73          |
| Street lighting              | 47,171.36         | 18,544.87         | 18,343.46         | 84,059.69           |
| Organisational waste         | 654.78            | 22,085.12         | 18,634.84         | 41,374.74           |
| Business travel              | 7,419.95          | 6,344.82          | 6,968.35          | 20,733.12           |
| Water                        | 1,088.45          | 721.64            | 683.87            | 2,493.96            |
| <b>Total</b>                 | <b>347,246.71</b> | <b>318,757.20</b> | <b>354,595.16</b> | <b>1,020,599.07</b> |

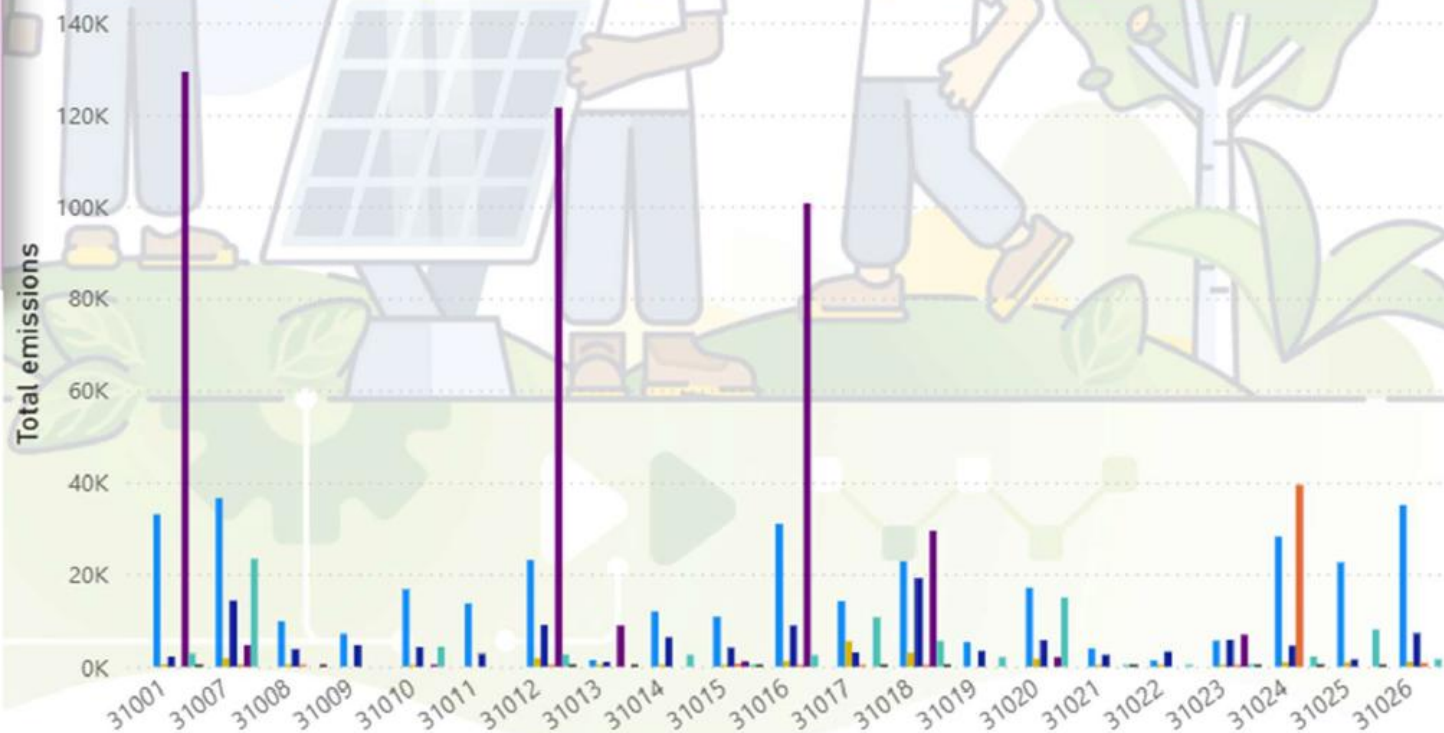
### Total emissions by Year and Source of emissions

Source of emissions ● Buildings ● Business tr... ● Fleet vehicl... ● Organisat... ● Other ▶



### Total emissions by source

Source of emissions ● Buildings ● Business travel ● Fleet vehicles a... ● Organisation... ● Other ● Street lig... ● Water







apse

performance networks

## Climate Change

### Renewable energy

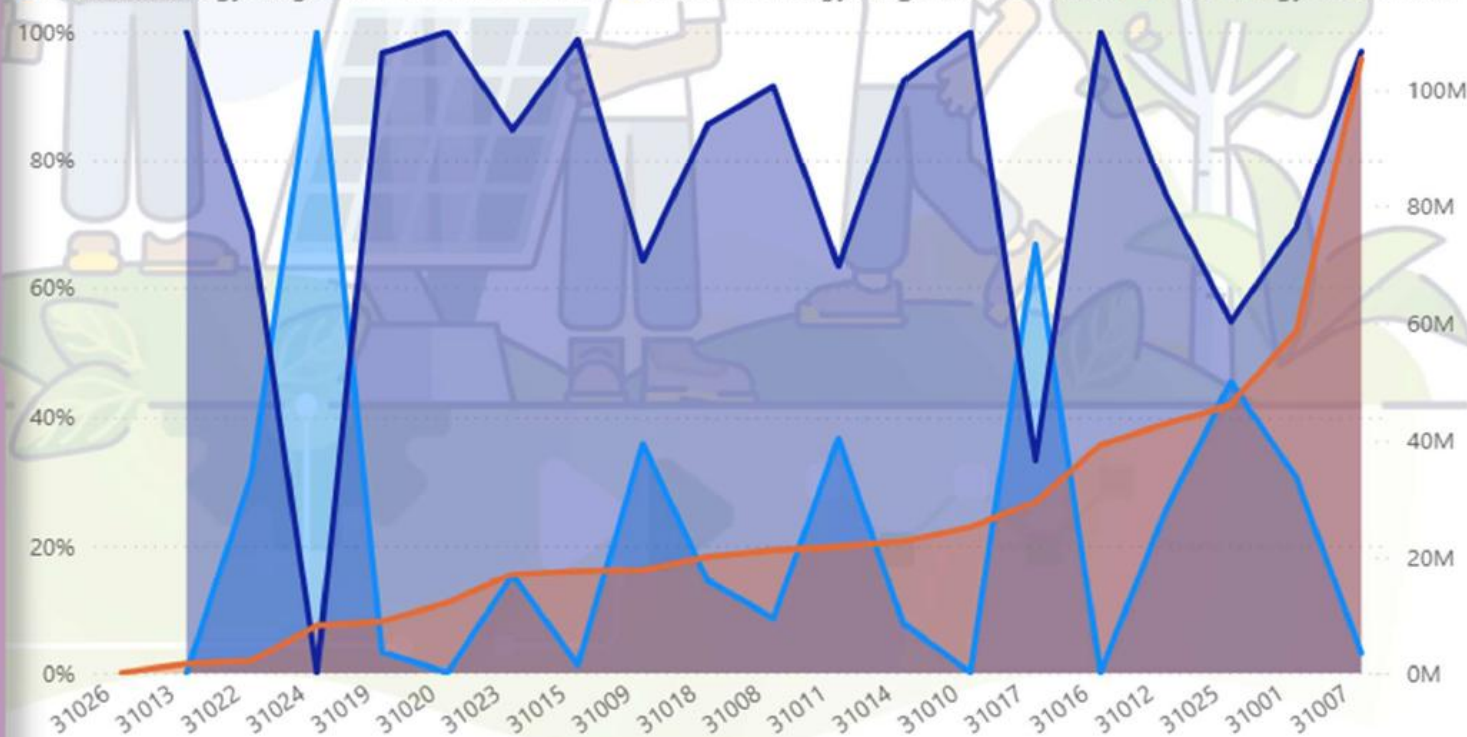
PIN selection

All

| Renewable energy source    | Electricity Exported | Electricity Used  | Heat Exported | Heat Used    |
|----------------------------|----------------------|-------------------|---------------|--------------|
| Biogas (all including CHP) | 0                    | 0                 | 0             | 0            |
| Biomass                    | 0                    | 657,240           | 0             | 4,000        |
| Hydro                      | 296,615              | 2,244             | 0             | 0            |
| Landfill gas CHP           | 13,819,256           | 66,424            | 0             | 0            |
| Other                      | 0                    | 0                 | 0             | 0            |
| Solar PV                   | 12,153,335           | 9,678,273         | 0             | 0            |
| Solar thermal              | 0                    | 0                 | 0             | 0            |
| Wind                       | 3,180,279            | 9,074             | 0             | 0            |
| <b>Total</b>               | <b>29,449,485</b>    | <b>10,413,256</b> | <b>0</b>      | <b>4,000</b> |

### % of energy used from renewable and non renewable sources

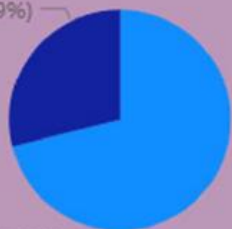
● % of total energy usage from renewable sources ● % of total energy usage from non renewable sources ● Total energy used in kWh



### Energy purchased from external supplier by type

● Non renewable ● Renewable

91.35M (28.89%)

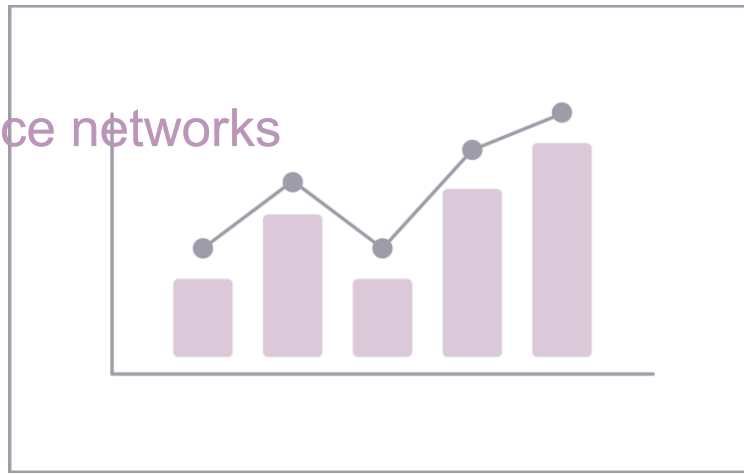


Previous pages

(71.11%)

518M

Total energy usage in kWh

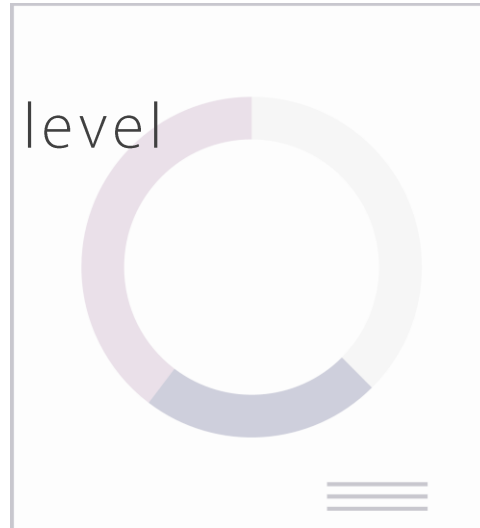


# Final words from me

Leading performance management tool for  
local government in the UK

Well-recognised at a national level

Progressive and responsive





# **NEW MUNICIPALISM**

Delivering for local people and local economies

# Contact Details

**Debbie Johns**

Head of performance networks

DJohns@apse.org.uk

07834334193

**INVESTORS IN PEOPLE™**  
We invest in people Gold



**Association for Public Service Excellence**  
**3rd Floor, Trafford House,**  
**Chester Rd, Stretford,**  
**Manchester,**  
**M32 0RS**

**telephone:** 0161 772 1810  
**web:** [www.apse.org.uk](http://www.apse.org.uk)