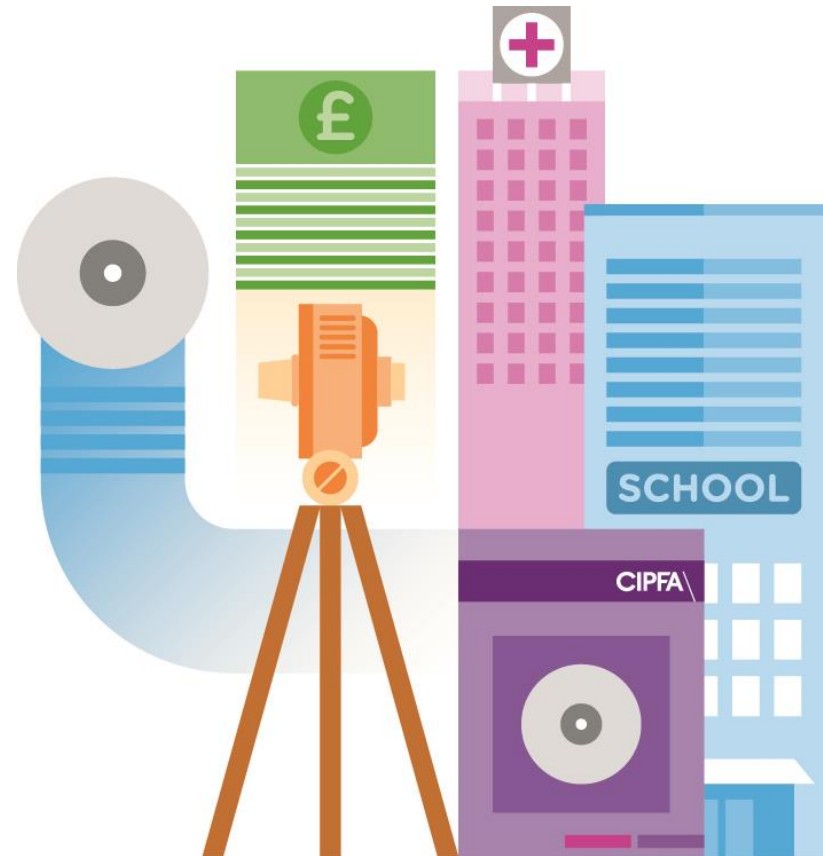


Assets for investment?



Where are we now?

- Unprecedented cuts in the public sector
- Focus on front line services
- Death by a thousand cuts
- Loss of key staff
- If it stops still sell it!



On the ground

- Foundations still need to be there
- We need to decide what we want our buildings to do
 - Information is power
 - Adequate resources

A photograph of a stone archway framing a view of a forest. The archway is made of dark, rough-hewn stones. Through the arch, a stone wall with a small arch is visible in the distance, surrounded by lush green foliage and trees. The scene is overcast.

An alternative view?

- One Public Estate
- TNRP/Investment Assets
- LABVs/Joint Ventures
- Providing services for others – Schools, other public, private sector



Shoots of Success?

- Using the existing estate
- Short term vs Long Term
- Acquiring new assets within area
- Moving further afield
- Killing two birds with one stone?
- Selling what you've got

A person stands in the shallow ocean at sunset. The sky is a mix of orange, yellow, and blue. In the distance, a line of wind turbines is visible on the horizon. The water is calm, reflecting the colors of the sky.

Standing out from the crowd?

- How good are you managing what you have? (Corporate Landlord/Costs/Performance)
- What skills have you got (what do you need?)
- What's the appetite for risk?

David Bentley

Head of Asset Management

 : 01332 559780

 : 07710 368711

 : david.bentley@cipfa.org

