



PROMOTING BEST PRACTICE

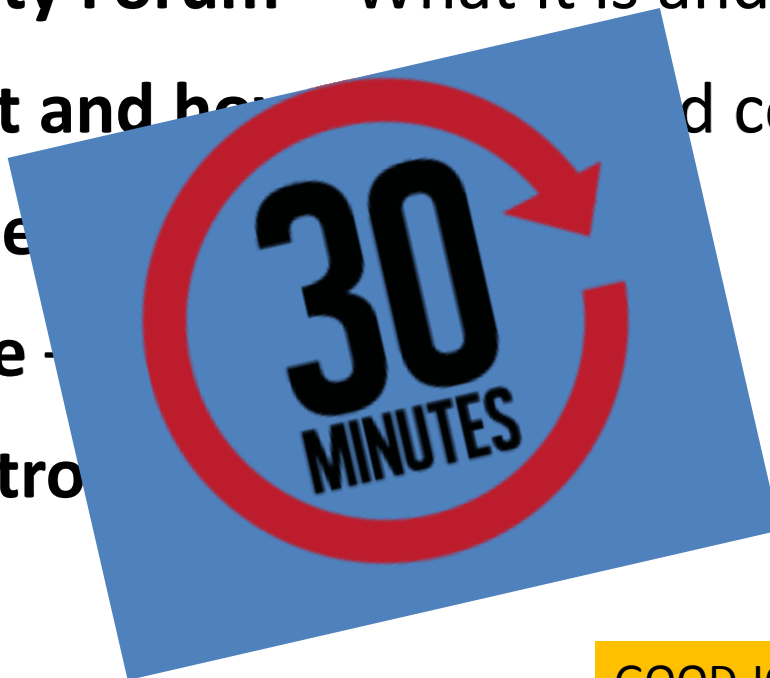
The Process & Benefits of Integrated Weed Control

John Moverley



TODAY'S PRESENTATION

- **The Amenity Forum** – What it is and what it does
- **Why, What and how** – Weed control
- **Weeds** – Be...
- **Glyphosate** -
- **Weed Control**

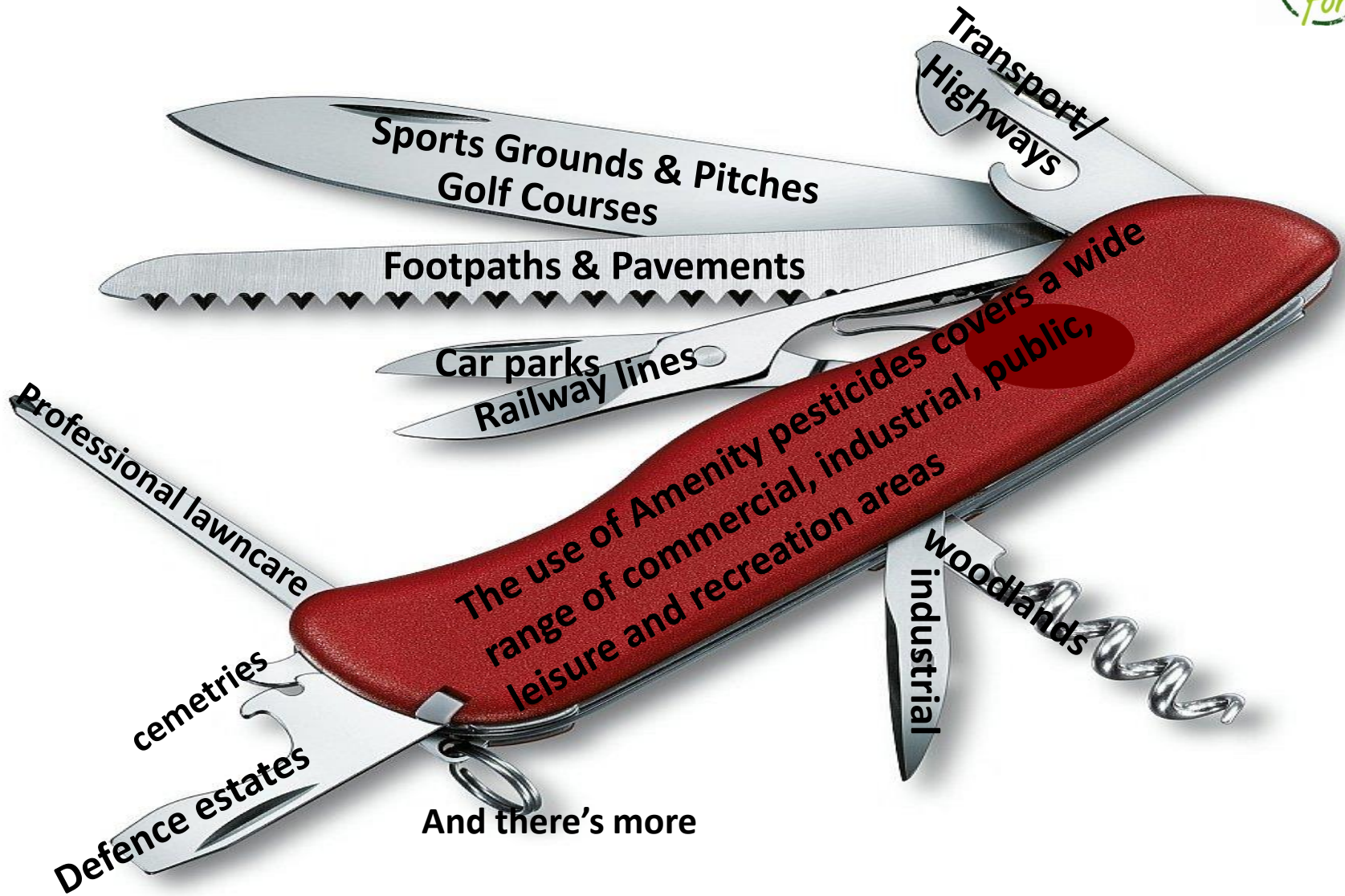


INCLUDING QUESTIONS

GOOD JOB I TALK FAST!

www.amenityforum.co.uk

WHAT ARE AMENITY AREAS?



The Amenity Forum is the collective body representing the Amenity industry in relation to weed, pest & disease control

The objectives of the Amenity Forum include:-

To promote and encourage proper and responsible use of pesticides and integrated methods for the control of pests, weeds and diseases

To lead, coordinate and encourage achievement of “Best Practice” objectives in Amenity pesticide use

To coordinate and encourage the establishment of sustainable qualifications, training and CPD activity, specifically for the Amenity sector

To organise activities within the Amenity Forum membership and linked organisations, such that Amenity Forum objectives are developed in a coordinated way

www.amenityforum.co.uk



Some of our activities

- 
1. Best practice guides
 2. The web site
 3. Newsletters, A...
 4. Date s...
 5. Organisation of ... conference
 6. Production ... & regular Chairman's
 7. Up...
 8. Dialo... ent, media, stakeholders etc
 9. Lobby ... encing
 10. and more

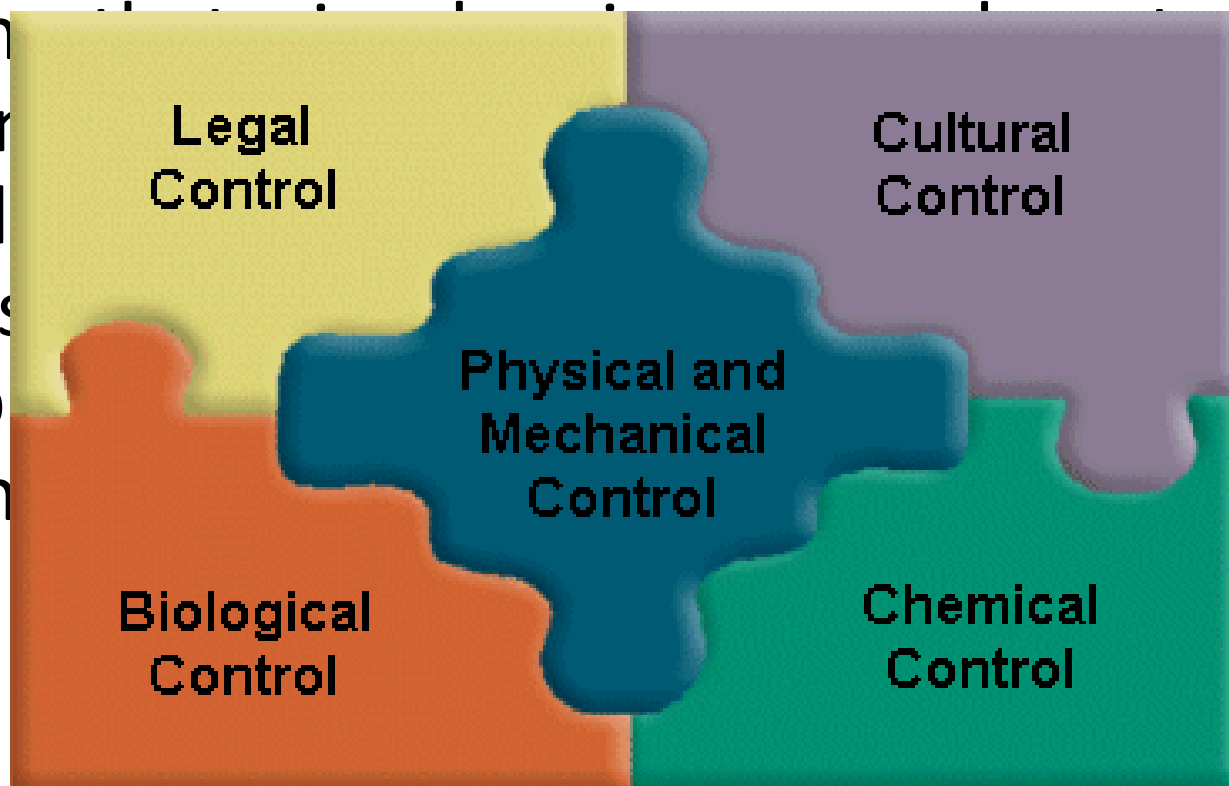
THE VOICE FOR THE SECTOR ON ALL ASPECTS OF WEED, PEST AND DISEASE CONTROL



Integrated Control – What

In practical terms

Ensuring
program
control
circums
availab
efficien



ol
d
d
s
e

Integrated Control – Why



Public Opinion
Environment
Regulations
Economics

End Use Expectations
Complexity



Sustainable Use of Pesticides in the UK

Positive (SUD) in the UK

- Implement measures passed (2013)
- Real change in practice
- Will improve the environment
- National Action Plan for the Sustainable Use of Pesticides (Plant Protection Products)



Plant Protection Products (Sustainable Use) Regulations 2012



Environment protection



Targeted application



Training & continuous professional development



Water protection



Human health protection



Handling and storage

WATER FRAMEWORK DIRECTIVE

KEY PRIORITIES

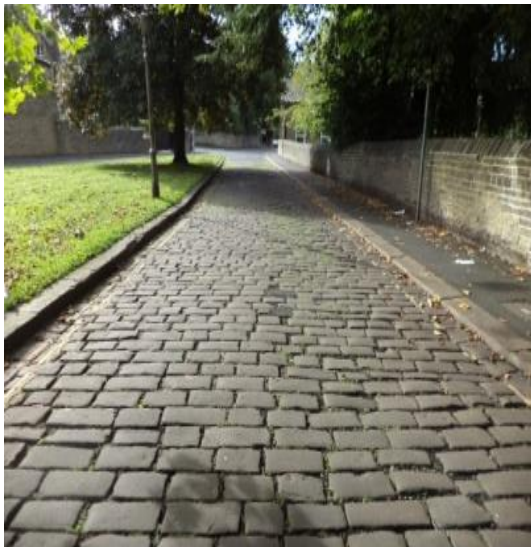


- **Minimise risk** to the operator, to the public and to the specifier/ contract awarder
- Achieve the **desired standard** in a **cost effective** manner
- Adopt an **integrated approach** to the task
- **Protect water**
- Protect surrounding desired vegetation



Integrated Control – How

How Do You Make an IPM Plan?



- **Site assessment** – understanding conditions that favour the pest – unique to your turf area. Map the area to be managed in the plan
- **Monitoring** – accurate identification needed of pest, map specific areas of responsibility for the person monitoring/giving training
- **Setting thresholds** – how little/much is acceptable to staff/golfers
- **Identifying management options:** cultural, biological, genetic, chemical how should each one be used and to what degree
- **Building weed profiles** – type of weeds, conditions that favour it, treatments to get rid of it etc.
- **Proactive weed management** – actually how you are going to treat the problem and document work carried out to eradicate weeds
- **Evaluation** – monitoring the plan, did the treatments work, can anything else be done to improve conditions, updating plan



WEEDS

Best Practice Guidance
Notes for Integrated
and Non-chemical
Amenity Hard Surface
Weed Control

From a Defra-funded 5-year programme entitled:
*Development of zero and minimal herbicide regimes for
controlling weeds on hard surfaces and determining
their emissions PS2802 (2009-2015)*



Research

5yr project looking at three weed control options:

Herbicide only – two programmed treatments:

2nd - between Aug & Sept

with thermal and/or mechanical treatment

No herbicide:

Thermal and mechanical treatments only



Key Points – Integrated Approach

- For any situation adopt an IPM approach
- Demonstrate a site specific approach
 - Understand the asset;
 - Understand the risks (human health, environmental, resistance);
 - Adopt flexible approaches (type and degree control, timing of applications)
 - Consider all options for control
 - Joined up working.
- Effective contract and job specification management

Example of 'Weediness' Scales



Level 1



Level 2



Level 3



Level 4



Level 5



Level 6

Integration in Practice

- change way of thinking
- Better design will look better
- Prevent detritus – weed growth and complaints
- Save money less time
- Linked in with targeted and smart sweeping routes



The different alternative methods available

Electricity



Electricity boils weeds from tip to root without damaging surrounding plants or soil

Hand-weeder only

Hot Foam



Hot water treats weeds whilst foam help retain heat for longer

Hand-weeder only

Hot Water



Hot water treats weeds

Hand-weeder and utility mounted automated version

Key Points - General



- Review contract and control specifications – more of the same will not do
- Integrated management planning (IPM) is essential
- Understand the problems
- Look for and operate to the Amenity Assured standard including commitment to using trained and continually updated staff at all levels
- Control development of weeds and economically and ecologically justified levels of control
- Seek Amenity Forum membership & hence commitment to best practice

Ten Golden Rules



They are not comprehensive but hopefully establish the key factors to be considered

Key reference documents are Guidance Notes available on the Forum website.

www.amenityforum.co.uk





The Pesticide Debate Black, White or Grey?

- ≡ There's no denying that pesticides are under pressure
- ≡ Alternatives should be part of the overall solution as they can be appropriate in a number of scenarios
- ≡ Main criticisms of alternatives are
 - ≡ Time
 - ≡ Cost:

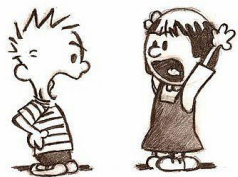
- Debate must be based upon the science and the evidence
- Difficult to take other elements out of the equation and need for greater understanding and awareness
- What is true is that we must support an integrated approach
- And demonstrate that we ourselves are committed to best practice
- And be proud of what we do and why we do it

Safety Environment Health



GLYPHOSATE?

- The most widely used chemical in amenity
- The most cost effective solution
- Supported by scientific experts as safe to use
- However significant lobby groups against
- Re-approved initially for further 18 months
- The key is proper targeted use by professional operators



Public Perception



THREE CORE PROJECT OBJECTIVES

HIGH PRIORITY

1. Creating an even more professional image for the sector, increasing understanding of the need for weed, pest and disease control amongst the wider public and, as a priority, local authorities, utilities, facilities managers and sports turf.
2. Further penetration of the Amenity Forum and its core messages across all organisations in the sector – both providers and specifiers, and again with emphasis on the priority groups listed above.
3. Creating a more professional mechanism to deal with issues, present proper arguments, build cases for argument, manage and increase media coverage and lobby/ influence as required

Creating an even more professional image for the sector, increasing understanding of the need for weed, pest and disease control amongst the wider public and, as a priority, local authorities, utilities, facilities managers and sports turf



Football is a major UK national economy and...

HOW IS IT DONE?

Our expertise in pitch management is globally and is highly regarded and all involved take it as a high priority. Without maintained facilities, the surfaces will be of a high quality and in social terms.

At the heart of it all is an integrated approach to weed management. Without maintained facilities, the surfaces will be of a high quality and in social terms.

Taking an integrated approach to weed management, applying cultural techniques, appropriate herbicides and where possible avoiding pesticides used safely and in such a way as to protect the environment and vital wildlife habitats. They need to be managed sustainably and effectively.

The Amenity Forum is...



The importance of keeping rail tracks and the surrounding areas free of weeds cannot be over emphasised. The key is to keep trains running safely, sustainably and on time.

HOW IS IT DONE?

Taking an integrated approach considering all aspects of weed management. Whilst all methods of control are used and need to be effective.

SOME KEY POINTS

The Amenity Forum is the voluntary initiative for the sector promoting best practice and improved standards.

KEEPING THE TRAINS RUNNING

STREETS AND PAVEMENTS

OUR ROADS

The Amenity Forum is the voluntary initiative for the sector promoting best practice and improved standards. www.amenityforum.co.uk



Golf is a major UK sport and a 2014 study revealed that in England it contributed £3.4 billion annually to the national economy and employed some 50,000 people. Golf course management in the UK is highly regarded across the world.

HOW IS IT DONE?

Ensuring proper maintenance of golf courses is essential for the environment and vital for a range of wildlife habitats. They need to be managed sustainably and effectively.

SOME KEY POINTS

The Amenity Forum is the voluntary initiative for the sector promoting best practice and improved standards.

WHY IT MATTERS

GOLF

GOLF COURSES

FOOTBALL





The importance of keeping rail tracks and the surrounding areas free of weeds cannot be overstated. The key is to keep trains running safely, sustainably and efficiently.

Production of Edugraphics and Video Clips

HOW IS IT DONE?

Taking an integrated approach considering... solutions Pesticides used safely and... pesticides remain key to the solution remain key.

A key piece... train... and... invasive weeds and trackside... vital

Railway tracks, facilities and surrounding areas are part of our natural landscape. It must be maintained with the following key objectives:

- Safety and performance;
- Community and partnership
- Biodiversity
- Biosecurity
-

Trains must run whatever the weather and this requires adequate weed control, at the very least in the interests of public safety

- Nobody would wish to use a chemical which is unsafe but the current process of authorisation and checking ensures this is not the case.
- Any consideration must be based on proper science & evidence
- The Amenity sector in the UK has led the way in committing itself to best practice & developing an Amenity Assured Standard
- Weed, pest and disease control is both important and essential
- Read The Forum's Ten Golden Rules and related material at www.amenityforum.co.uk
- Contact us at info@amenityforum.co.uk

The Amenity Forum is the voluntary initiative for the sector promoting best practice and improved standards www.amenityforum.co.uk

Creating an even more professional image for the sector, increasing understanding of the need for weed, pest and disease control amongst the wider public and, as a priority, local authorities, utilities, facilities managers and sports turf

- Extending our reach and audience through:

- Articles
- Presentations
- Press releases
- Making contacts



Further penetration of the Amenity Forum and its core messages across all organisations in the sector – both providers and specifiers, and again with emphasis on the priority groups listed above.



ARE YOU INVOLVED IN PROFESSIONAL LAWCARE?

- What you must know if you are controlling weeds, pests & disease



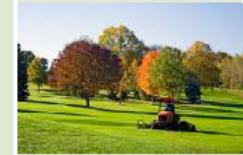
ARE YOU A GREENKEEPER?

- What you must know if you have any involvement in controlling weeds, pests and disease.



ARE YOU INVOLVED IN STREET & PAVEMENT MAINTENANCE?

- What you must know when controlling weeds, p



Must Know

There have been and there continue to be significant changes in policy impacting on those involved in weed, pest and disease control. The most significant changes arise from implementation of the Sustainable Use and Water Framework Directives.

Everyone needs to operate at best practice standards if the sector is to stay in control and continue to be able to operate at the required standards.

There are important legal changes as well.

Spraying equipment must be inspected and documented if required by HSE.



Must Know

There have been and there continue to be significant changes in policy impacting on those involved in weed, pest and disease control. The most significant changes arise from implementation of the Sustainable Use and Water Framework Directives. Everyone needs to operate at best practice standards if the sector is to stay in control and continue to be able to operate at the required standards.

There are important legal changes as well.

Spraying equipment must be inspected and documented if required by HSE.



How to find information

The best source of guidance is the Amenity Forum website www.amenityforum.co.uk

It is important that all involved follow the Ten Golden Rules set out on the website and operate to Amenity Assured standards. Failure to operate at these levels creates substantial risk for you and the sector as a whole.

An essential element of policy change is that everyone takes an integrated approach. This involves you being able to demonstrate that for every situation you have considered all possible approaches to control, cultural, pesticide and non-pesticide.



Key

It is a legal requirement for anyone applying pesticides to be properly trained and certified. Purchasing pesticides must ensure that they are used by proper personnel.

Spraying equipment must be inspected and documented if required by HSE. Test certificate 2016, with routine tests expected thereafter.

Only approved chemicals should be used and purchased.

Thoroughly recommended is that all staff are engaged in continuous professional development.

Many organisations in the sector are members and supporters of the Amenity Forum - should you be too?

Must Know

There have been and there continue to be significant changes in policy impacting on those involved in weed, pest and disease control. The most significant changes arise from implementation of the Sustainable Use and Water Framework Directives.

Everyone needs to operate at best practice standards if the sector is to stay in control and continue to be able to operate at the required standards.

There are important legal changes as well.

Spraying equipment must be inspected and documented if required by HSE.

How to find information

The best source of guidance is the Amenity Forum website

www.amenityforum.co.uk

It is important that all involved follow the Ten Golden Rules set out on the website and operate to Amenity Assured standards. Failure to operate at these levels creates substantial risk for you and the sector as a whole.

An essential element of policy change is that everyone takes an integrated approach. This involves you being able to demonstrate that for every situation you have considered all possible approaches to control, cultural, pesticide and non-pesticide.

Key Points

It is a legal requirement that anyone applying pesticides is properly trained and certificated. Similarly anyone purchasing pesticide must ensure that such product is used by properly certificated personnel.

Spraying equipment which requires the operation to be mounted in its operation must hold a National Sprayer Test certificate by November 2016, with routine tests expected thereafter.

Only approved chemicals should be used and purchased.

Thoroughly recommended is that all staff are engaged in continuous professional development.

BIGGA is a member and supporter of the Amenity Forum - should you be too?

The Amenity Forum is the

The Amenity Forum is the voluntary initiative for the sector promoting best practice and improved standards www.amenityforum.co.uk

The Amenity Forum is the voluntary initiative for the sector promoting best practice and improved standards www.amenityforum.co.uk

STAND UP AND BE PROUD OF THE AMENITY SECTOR



- ITS SIZE
- ITS COMPLEXITY
- ITS IMPORTANCE
- WORKING TOGETHER WE CAN DEMONSTRATE OUR COMMITMENT TO BEST PRACTICE & DRIVING UP STANDARDS
- SUPPORT THE AMENITY FORUM & WE CAN STAY IN CONTROL



Upping our game

A challenge like



PROMOTING BEST PRACTICE



Me beating myself!!



IMPORTANT & ESSENTIAL



Nottingham Forest winning The European Cup



Amenity sector and all involved with it
being recognised for its importance,
professionalism & standards





PROMOTING BEST PRACTICE

Our Conference & Exhibition

October 13th

Pirelli Stadium

Burton on Trent

Important & Essential

