



Knowsley Council

'New Income For Parks'

Caroline Davies – Public Open Spaces Manager
Knowsley Council

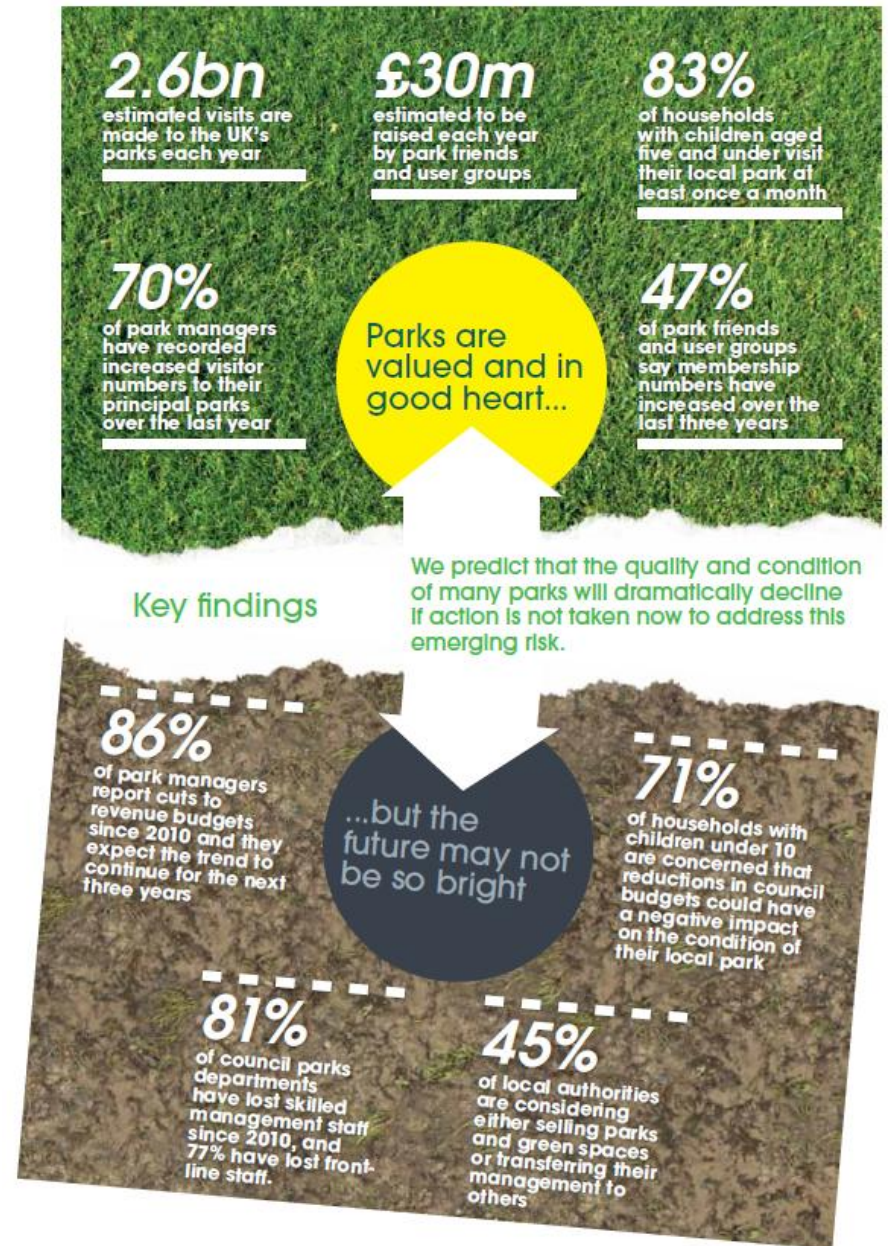
Presentation Overview

- Setting the scene
 - *The challenge*
 - *Introduction to Knowsley*
- External income opportunities
- Using data to target resources
- S106 – developer contributions
- Volunteer support
- Training providers and task days
- New income opportunities
- New management models

Setting The Scene

The Challenge

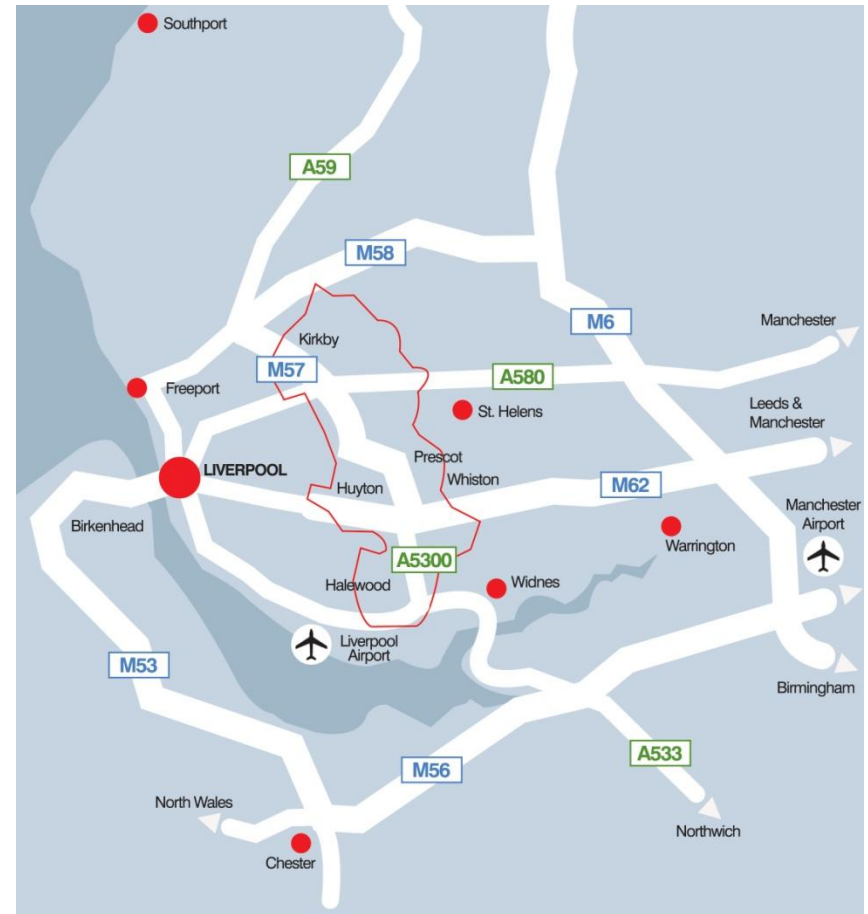
- Maintenance budgets are being reduced
- Capital will be less available for improvements
- Park facilities are becoming more expensive to use
- Management and maintenance skills are being lost
- Some parks and green spaces may be sold or transferred to others to maintain.



Knowsley Council

Setting the scene

- Population of 146,000 residents within 65,000 households
- Significant reduction in Central Government funding resulting in a six year savings requirement of £81.6m
 - £56.0m (2011/12 – 2014/15)
 - £25.6m (2015/16 – 2016/17)
- Green Space Service:
 - In-house Grounds Maintenance service
 - Green Space Ranger Service
 - 16 Green Flags
 - 55 FOG / Community Groups
 - 8 million visits per annum to parks
 - 70,00 attended parks events and activities during 2012/13



External Income – Capital Projects

- The Heritage Lottery Fund have awarded over £620m across the UK whilst the Big Lottery Fund have invested a further £80m in England
- Landfill Communities Fund (e.g. Veolia / Sita / Biffa) provide smaller local funding opportunities
- Charitable Trusts / Grants (e.g. Garfield Weston Foundation, Esmee Fairbairn Foundation)
- Knowsley has successfully secured over £7m of external investment for its parks and green spaces over recent years
- Data and intelligence has been key to securing and targeting resources effectively

Knowsley's Data

Green Space Asset Management Plan

The overall objective of the Green Space Asset Management Plan (AMP) is:

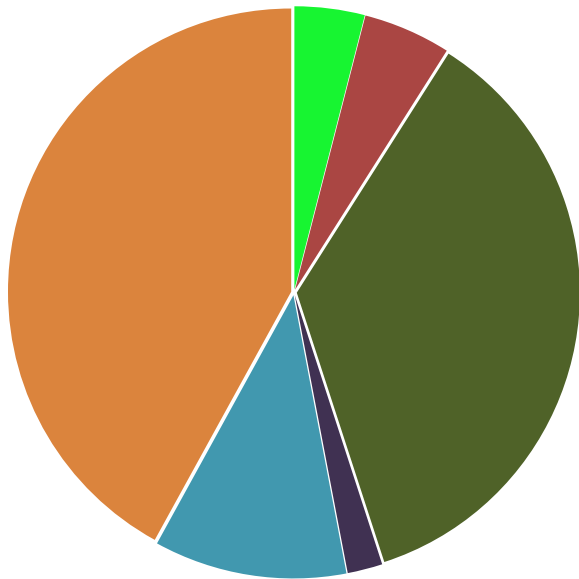
'To meet the required level of service in the most cost effective and sustainable way through the operation, renewal, creation and disposal of green space assets to provide for existing and future residents in Knowsley'

The Green Space AMP describes Knowsley's existing green space assets and establishes cyclical maintenance requirements and replacement costs over a twenty five year period. This helps to guide the resources and capital investment of the Council with strategic priorities for management and development of the individual Parks and Public Open Spaces.

Green Space Asset Management Plan

The Financials

An example of the assigned work programme for Park and Garden Typology 2013/14 to 2017/18

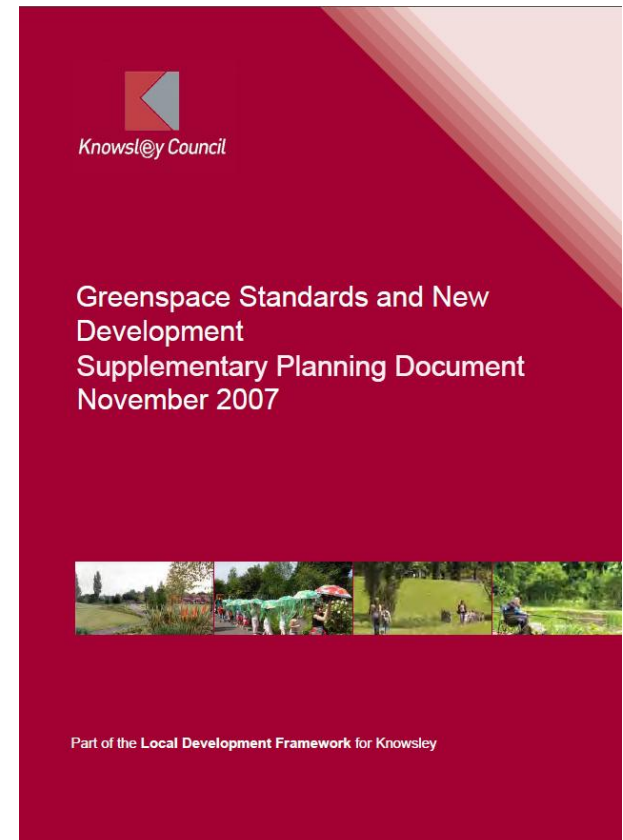


Programme	Value
Volunteers / Restorative Justice	£26,685
Parks and Street Scene Maintenance	£37,230
External Funding	£249,110
Revenue	£15,420
Developer Contributions	£73,649
Gap	£294,181
	£696,275

- Volunteers, Training & Restorative Justice
- Parks Maintenance
- External Funding
- Revenue
- Developer Contributions
- Gap

Section 106 Developer Contributions

- In 2007 Knowsley created the Greenspace Standards and New Development SPD
- Since 2007 Knowsley has secured £1.5m for green space improvements
- Currently drafting the 2015 SPD



Volunteer Support

- Knowsley now has 55 Friends of Groups, Volunteer Groups and Community Groups supporting its parks
- They provided 27,000 volunteer hours at an economic value of £0.310m last year
- They are crucial to securing many of the external grants and funding currently available for green spaces
- A number of groups have taken on dedicated maintenance activities



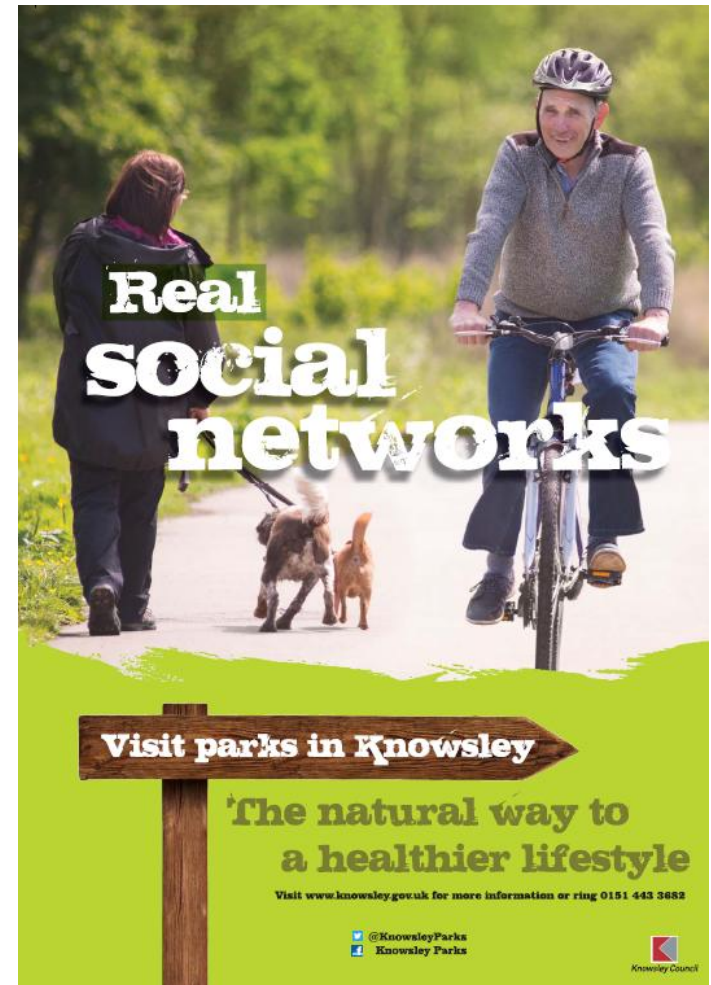
Training Providers, Colleges and Local Business CRS Days

- Knowsley woodlands are regularly utilised for arboricultural training programmes with extensive maintenance works undertaken by Myerscough College and Millhouse Training.
- Knowsley has facilitated a range of CSR days to undertake work within green spaces. Local businesses include Balfour Beatty, Jaguar Landrover, ASDA, McDonalds and United Utilities



The Natural Health Service - Knowsley

- In 2013/14 Knowsley has secured £0.450m of capital funding from Public Health and £0.80m of revenue funding
- Currently developing a 'Mindfulness' programme as part of the Headstart programme
- Offering greenspace Eco-therapy sessions to local businesses



Learning in the Natural Environment

- In 2013/14 Knowsley launched its Environmental Education offer to schools which includes curriculum based workshops, Forest School activities and informal learning and training opportunities
- Knowsley has recently developed a 'Early Years Offer' to children's centres and child minders across the borough



Next Steps

Liverpool City Region Re-Thinking Parks

The Rethinking Parks Task Group has been set up through Nature Connected in order to identify if and how partners can work across boundaries and identify alternative service delivery models to retain the regions public parks and green spaces.

The Group are currently exploring:

- Parks Agency Concept
- City Region Bid Concept
- New Income Opportunities

There are a range of alternative income sources that could be explored further. These may include renewable energy opportunities on green sites, introducing taxation from certain businesses e.g. Energy from waste sites and hotel bed taxes.

Thank you

Any Questions?

Caroline.davies@knowsley.gov.uk

0151 443 2829