
Collaboration In Action: Shared Services

Gail Macfarlane

Overview

- ❑ Introduction
- ❑ Does Shared Services Work?
- ❑ Workforce & Structure Review
- ❑ Progress to date
- ❑ Implementation of Environmental Shared Services
- ❑ Challenges
- ❑ Next Steps
- ❑ Conclusion



Introduction

	Net Revenue	Capital	Headcount
Inverclyde Roads Service	3,664,750	3,410,000	47
West Dunbartonshire Roads Service	3,634,884	16,916,00	95 (includes school crossing patrollers x46)

- Jan 19 Collaborative Management Model implemented with appointment of a Shared H of S for Roads & Transportation (WDC & IC)

Moving Forward Together

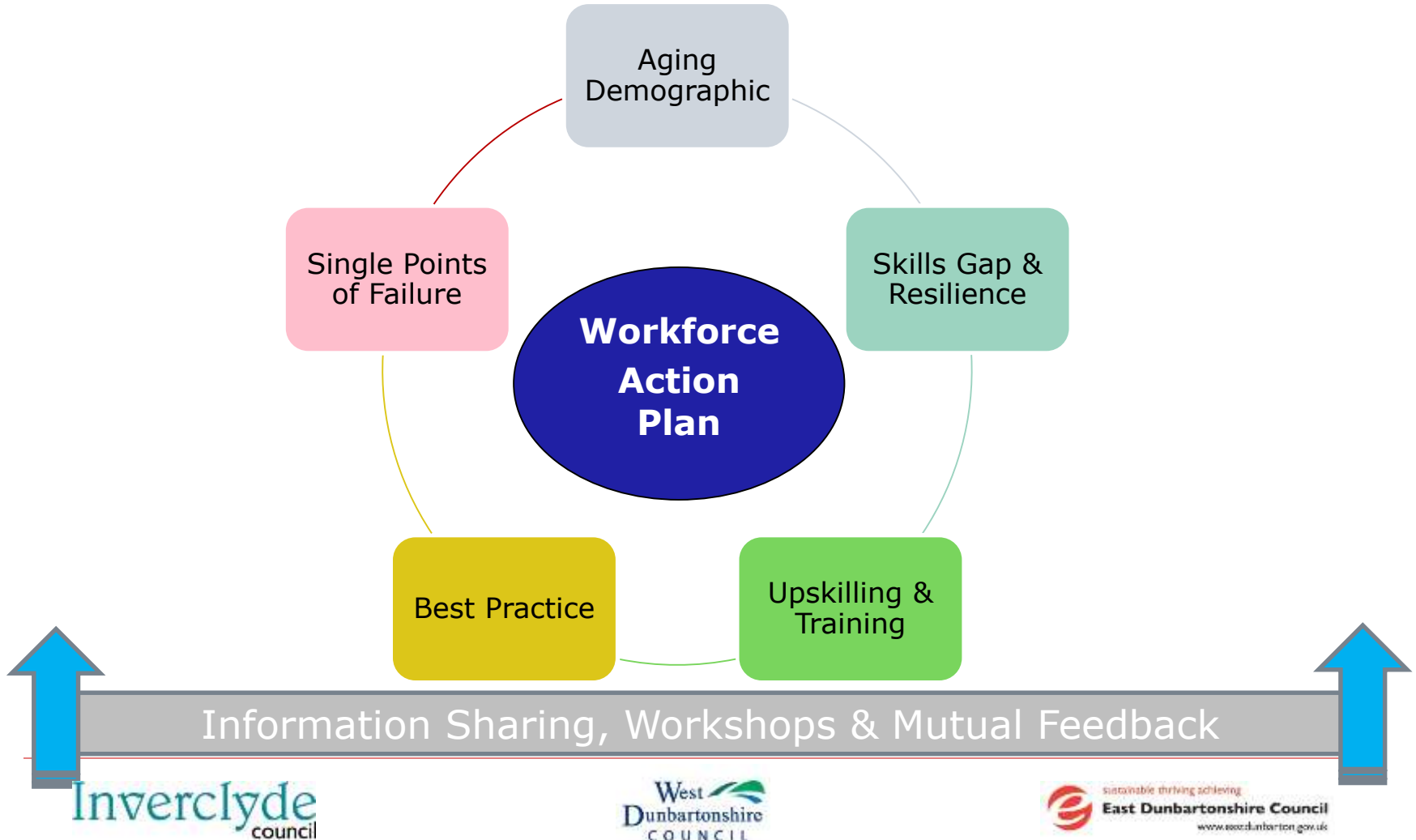


Local Outcome Improvement Plan
2017-27

Is Shared Service Working?

- ❑ Align standards, working practices and policies across both Councils
Winter Plan, Risk Assessments etc
- ❑ Common development of strategy
Waste & Fleet Strategy
- ❑ Wider skill base & career opportunities
Capital project team developed
- ❑ Learning & Networking
Sharing of skills & knowledge
- ❑ Ability to retain more professional and front line capital work in-house
- ❑ Joint Procurement exercises

Workforce & Structure Review



Implementation of Environmental Shared Services

Collaboration/Resilience/Efficiency

- ❑ Environmental Services Business Case Developed
- ❑ Oct 20 Expanded remit to include Fleet, Waste & Grounds
- ❑ Feb 20 Council approvals
- ❑ April 20 Commencement of Shared Fleet & Waste Manager:
 - Fleet and Transport – procures, manages, maintains & disposal of the Council’s vehicle fleet and operates the transportation service;*
 - Waste –residual waste & recycling collections from all households and registered commercial waste users;*
- ❑ Ongoing Review of Waste Structures, Policies & Procedures

Challenges

- ❑ IT compatibility;
- ❑ Administration;
- ❑ Capacity & Workload Prioritisation;
- ❑ Workforce concerns;
- ❑ COVID reducing momentum; and
- ❑ Duplication.

Next Steps, Keeping Momentum

- Business Case for shared managers for Roads & grounds:
 - Roads – Network Operations, Technical & Engineering*
 - Grounds - grounds maintenance, street cleaning and burial and cremation services.*
- Working groups to consider opportunities to lead specific elements of services ie
 - Street Lighting
 - Capital Project Management
 - Waste Strategy etc

Conclusion

- ❑ Progress continuing
- ❑ Challenges Remain
- ❑ Further Opportunities
- ❑ Questions