

Crematorium Modernisation Project

Presentation – 26th January 2023

APSE Cemeteries & Crematorium Advisory Group

WORKING TOGETHER
FOR A BETTER BOROUGH,
WITH PEOPLE AT THE HEART
OF EVERYTHING WE DO.



Introduction

St Helens
Crematorium
opened in 1962

It was designed by
local artist Henry
Bannister

One of the main
features is the
impressive Dalle de
verre windows

Designed by Pierre
Fourmaitreaux of
Powell & Sons (later
Whitefriars Glass)

Since the opening of the Crematorium in 1962 there has been no major significant modernisation other than new cremators including full abatement equipment and an extension to house this in 2010.

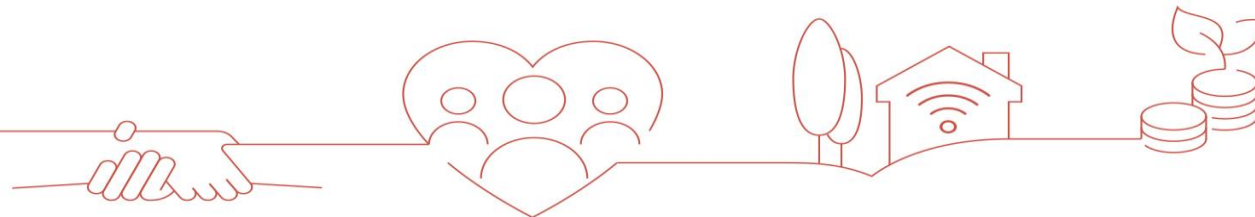
So, the much-loved building needed some modernisation to take place in the public facing areas such as the Chapel, Waiting Room, Exit hall, Restroom facilities and Office area.



Crematorium Main Chapel.

Background

- Following the works to the new cremators in 2010, the next phase for re-development planned to take place was the Office, Waiting room, Exit Hall and restrooms.
- However the start of Austerity hit and the plans were put on hold as the Council had too many other commitments and urgent needs.
- In 2017/18, a report to recommend the modernisation works was submitted to the Snr Management team at the time, various change during this period led to delays.
- In 2019, requests for expressions of Interest for the project was submitted via the North West Construction Hub Framework for the tender process.



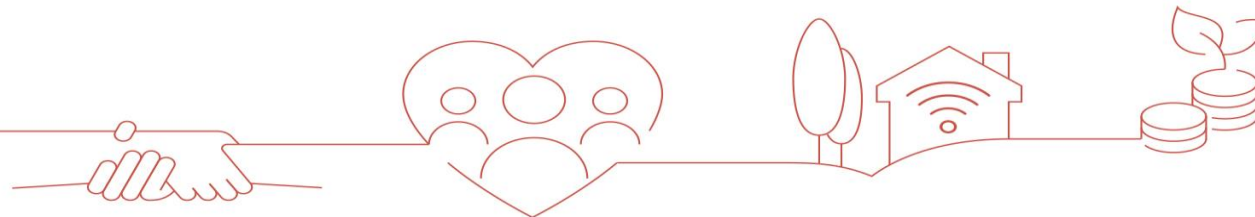
Original :Timetable & Budget

- Estimated budget in 2019 was 1.3 Million.
- Feb 2019 Mini Competition Procurement Tender process took place via CHEST <https://www.the-chest.org.uk/> QS also appointed to offer cost oversight and best value on behalf of the Council.
- March 2019 Interviews were arranged after the returns, with top 3 scoring Contractors.
- April 2019 Contractor to be informed successful.
- April 2019 Pre-construction activity and development including design.
- June 2019 Agree contract.



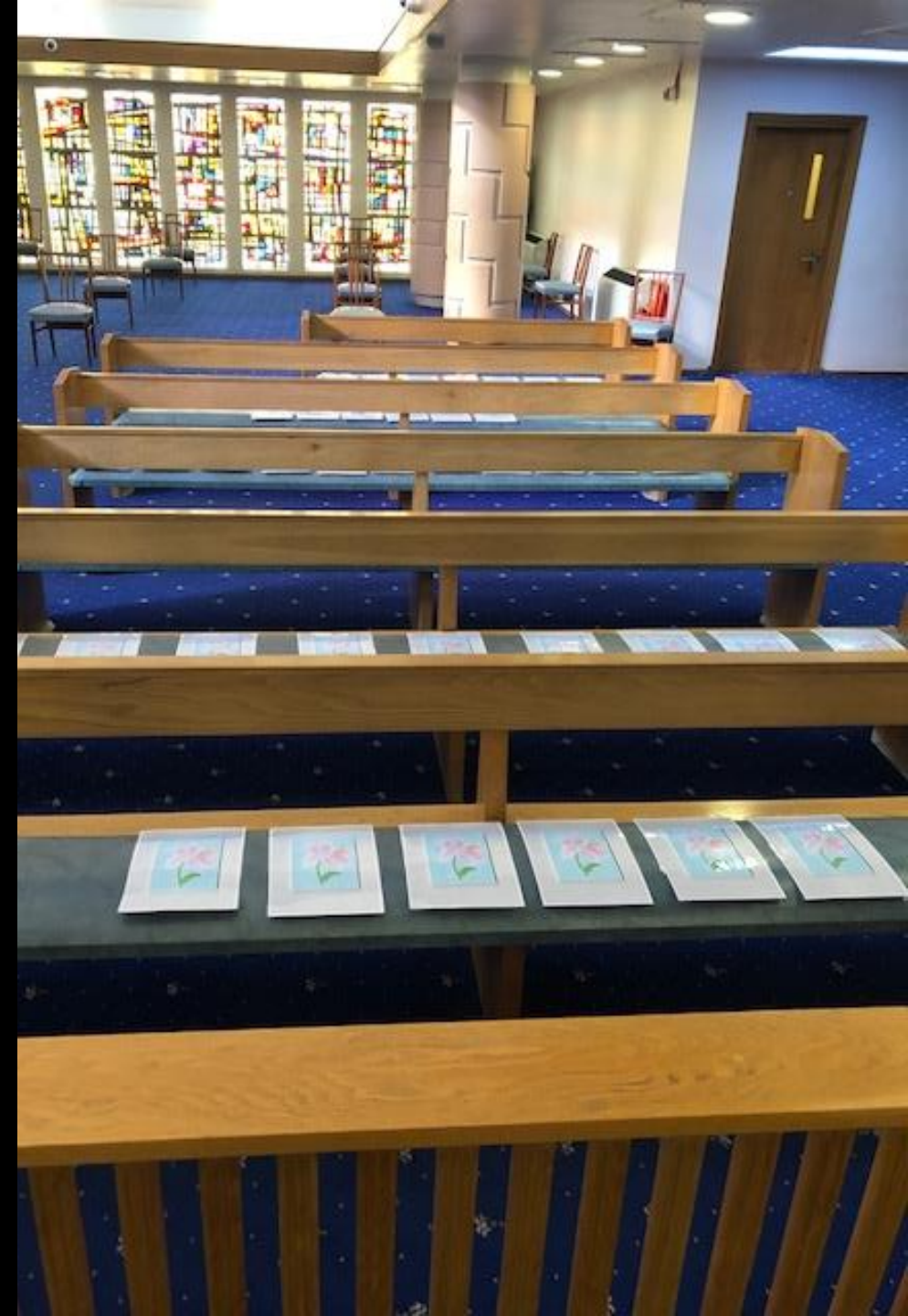
Reality

- However, due to the nature of the works involved, the sensitivity of the building and purpose of the site, the need to continue to operate and work out of hours, the design was more complex than first thought and due to further problems identified with the gable end this took considerably much longer than anticipated, as more reports had to be taken along with advice about the structural building.
- The costs also originally thought were not realistic as to the ask and size of the project and further budget costs where needed to be approved.
- Therefore 3.5million was estimated a more realistic budget to cover the project and continue with the works.



Pandemic March 2020

- Following a further approach to cabinet to agree the additional budget costs the works were scheduled to start in April 2020.
- Due to the Global pandemic the works were Paused as the Bereavement service like many was dealing with some very unprecedented times with different priorities.



Project Principles and Aims

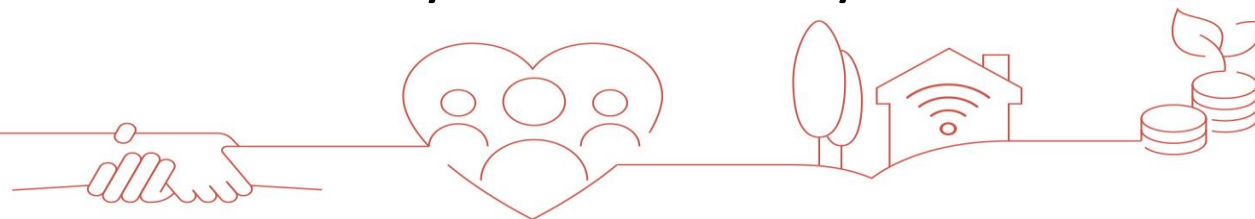
- Following a long PAUSE the project started on the 14th June 2021, by this time 2 years later than first planned.
- Site meetings started and a meeting with all partners took place about what to expect and how to manage customers expectations.
- The project was to run for 9 months. With Seddon Construction the successful Contractor <https://seddon.co.uk/> working over the evenings (out of hours between 5pm till 2am) Monday to Friday with a number of weekends planned for the latter end of the project when the main chapel was updated. Over various phasing's of different areas of the building, this included the office being temporarily located to portacabins for 8 months.

- The works were to transform the Crematorium into a more modern space improving how people feel when they are in there, to be more calming, comforting and welcoming using calming colours and improving the overall ambiance of the place to ensure the bereaved felt more at ease, whilst meeting the expectations of the bereaved.
- Maintain the heritage and pulling the old with the modern together, one thing that was also on the design was to re-locate the catafalque from the side of chapel to the middle, change the furniture and work with the supplier to make something bespoke and fitting of the Crematorium.
- Install business contingency arrangements with the inclusion of a generator and fridges.

- Bring back into use an old disused chapel for more intimate services and other uses for the Community.
- In following recent Govt Crematoria reports to support the upgrade in making the Crematorium more modern and multi denominational, the recent CMA reports also supported the ideology of the refurbishment.
- Make a private meeting room for the bereaved and a separate Funeral Directors and deliveries entrance.
- Create a staff room to assist with the team's wellbeing as often this is a very difficult role as well as a privilege.
- Install digital media services to assist with the needs of the bereaved.

Completion

- The project was completed on time!
- In budget!
- Completion date 24th March 2022 in the Crematoriums 60th Birthday year!
- The feedback from all has been overwhelming and positive.
- Improved the moral of the team.
- Improved the future opportunity and sustainability of the Crematorium.
- More environmentally friendly with replacement of LED lighting.
- Project led to recognition at National awards – NWRCA22 and finalist for Bereavement Services Service Team at the APSE Service Awards 22.
- Held Open Day for the Community to visit in May 2022 – over 100 visitors.



What was achieved together #sthelestogether

The story in a short 5 minute video
clip of before and after :

<https://youtu.be/qBptDdlarbo>

Contact Sonia Smith at St Helens

Council via email

soniasmith@sthelens.gov.uk

For any more information



Thank you for listening – Any Questions

