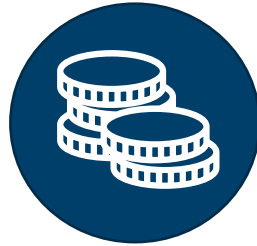


Priorities for Sport and Leisure

Steve Welch Strategic Lead, Place Development

National Picture



Uniting the Movement



A vision to change – but in the context of risk and challenge



Why provide these services?

To the communities it serves

1

Public sector leisure provides a service that the free market is not incentivised to deliver

2

Sector provides important services to Black, Asian and ethnic minority groups, lower socio-economic groups and younger people

3

Public sector support mental and physical wellbeing and individual development

4

Generating £3.91 in value for every £1 spent and contributing £13 billion in economic value, £5.2 billion in healthcare savings and £1.7 billion in social care savings

To central and local government

1

Positively contributing to several government priorities at a national and local level

2

This includes the DCMS Single Departmental Plan, rebuilding from Covid-19, the Levelling Up agenda and the NHS long term plan

3

It also has a central role to play in the delivery of Sport England's Uniting the Movement Strategy

4

As it speaks into each of the five big issues Sport England have identified as having the greatest potential for preventing and tackling inequalities

Shared vision and consensus for change

activity alliance | disability inclusion sport

Active Partnerships

apse

CIMSPA

CLOA
CHIEF CULTURAL & LEISURE OFFICERS ASSOCIATION

Community Leisure UK

UK active
More people
More active
More often

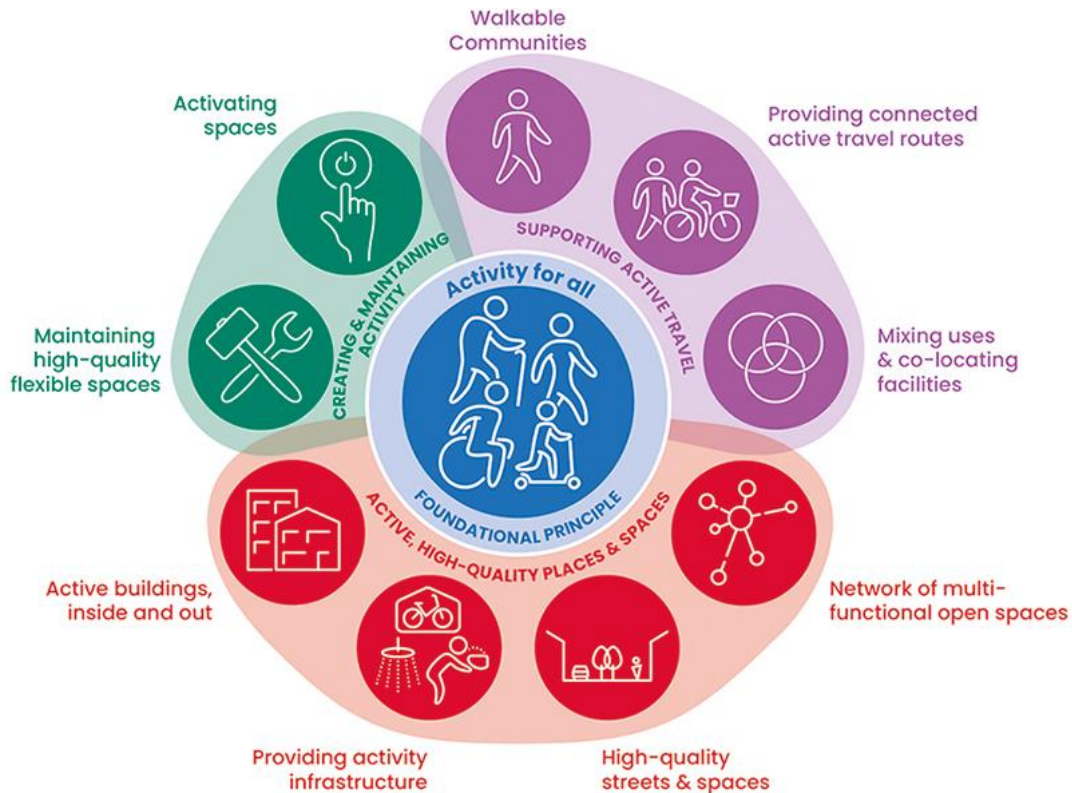
SPORT ENGLAND

DCN
DISTRICT COUNCILS' NETWORK

Local Government Association

Swim England

Wider Services



Place and local systems



Key messages

- Change is needed
- Consensus and commitment from the sector
- Transition towards **active wellbeing services**
- A place-based approaches with shared priorities – and funding models
- Help and assistance is available