

Networked Heat Pumps with Kensa

Presented by: Stuart Gadsden



What's a more important problem to solve: fuel poverty or climate change?

Climate change

+ Add to myFT

World breaches 1.5C global warming target for first time in 2024

Data for warmest year sparks fears climate change is accelerating faster than expected

Figure 2.6: The median fuel cost for households (after rebates) increased by 60 per cent between 2020 and 2023 in real terms.²¹

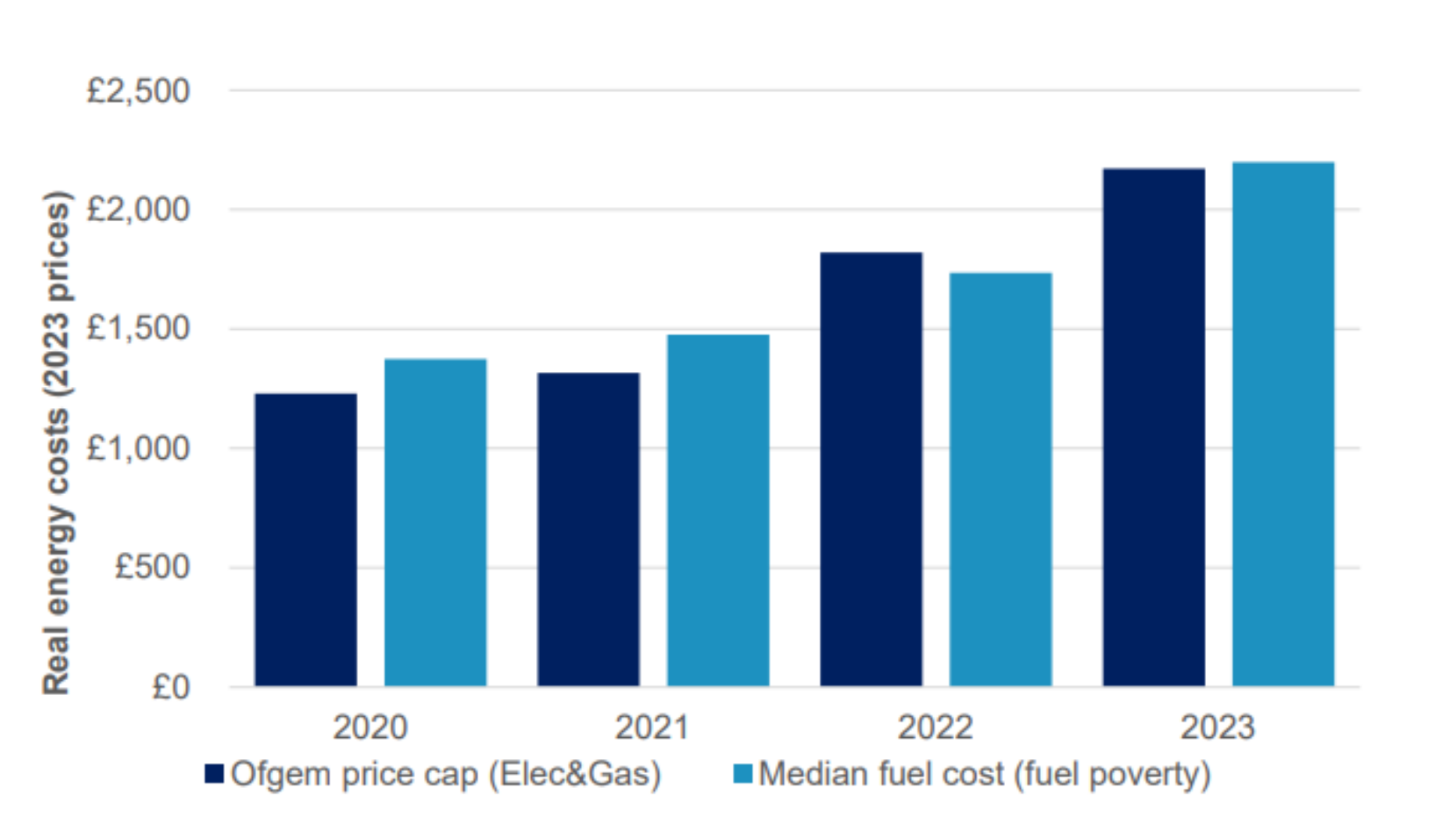
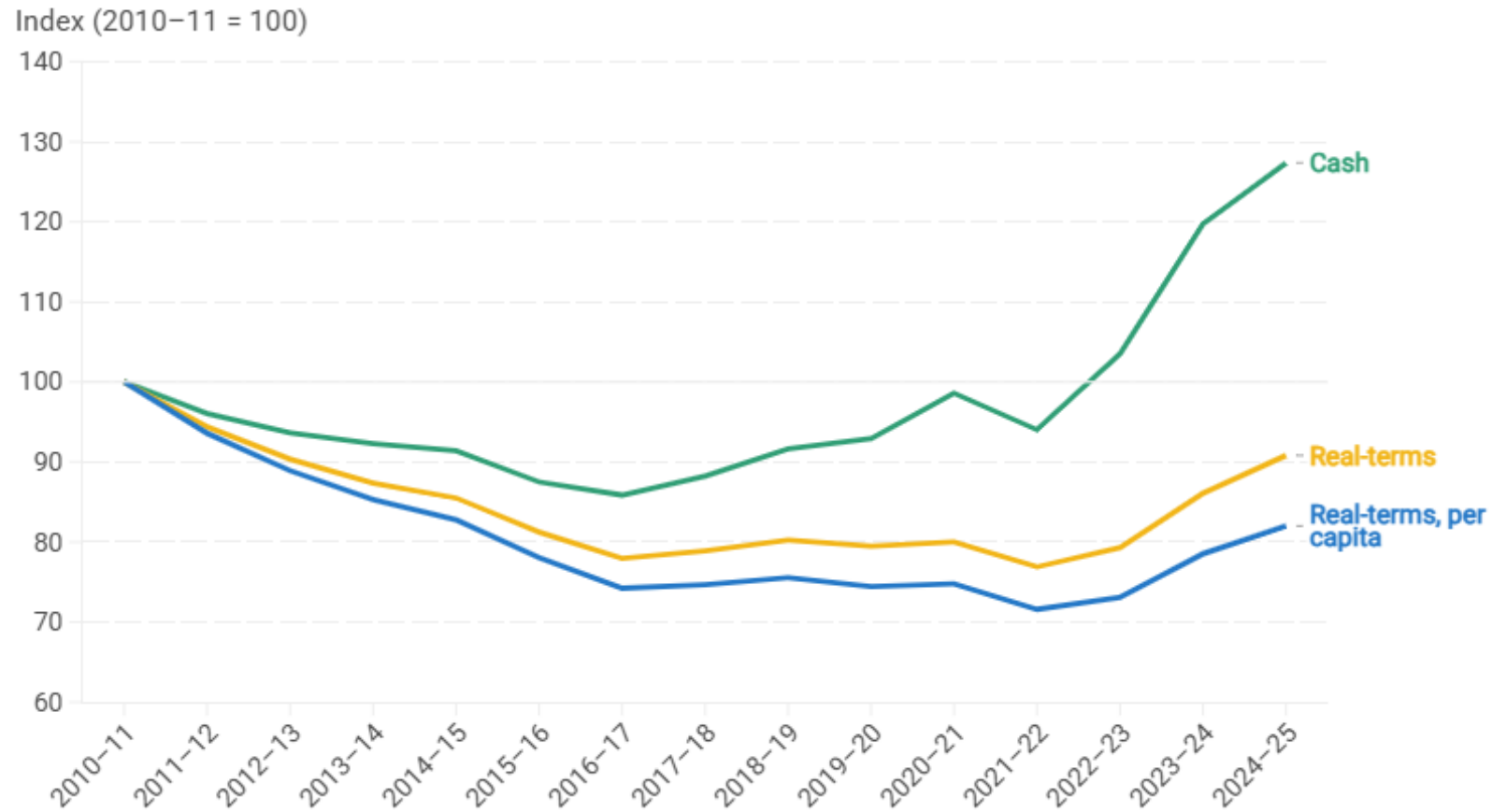


Figure 8. Cash and real-terms core council funding and funding per person (2010–11 = 100)



Note and source: Funding includes core spending power, above-baseline growth in business rates, and NHS transfers for social care services, and is described fully in Appendix A. Funding adjusted for inflation using GDP deflators from OBR Economic and Fiscal Outlook – March 2024. Per-person figures reflect the latest ONS mid-year population estimates.

[Download the data](#)

Networked Heat Pumps
Optimised to deliver long term
benefits to landlords and residents

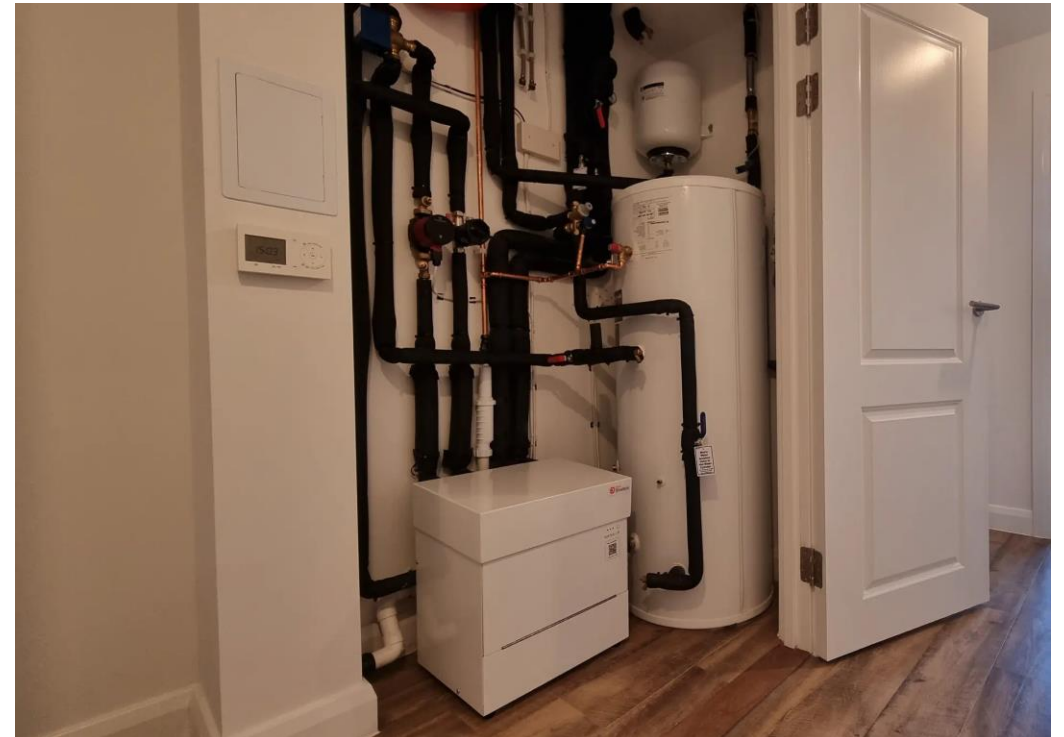
How it works



The small but mighty Shoebox NX



Sutton Dwellings, Clarion Housing



Chadwell St Mary, Thurrock Council



Marshland Primary School, East Riding



What's a more important problem to solve: fuel poverty or climate change?

Thanks!

E: stuart.gadsden@kensa.co.uk

M: 0750 800 5541

Questions

- Who has experience of installing heat pumps or delivering renewable energy projects?
- What's most important to you in driving large or innovative renewable projects forward?
- What barriers are there to installing more heat pumps in your properties?
- How can companies like Kensa better support your ambitions?
- Are you optimistic that the UK will meet its 2050 net zero target?
- Is decarbonising heat a key priority for your organisation?
- Is tackling fuel poverty a key priority for your organisation?