



SHAPING OUR CLIMATE FUTURE TOGETHER

Susanna Dart

Climate Change Policy Officer

Lancaster City Council

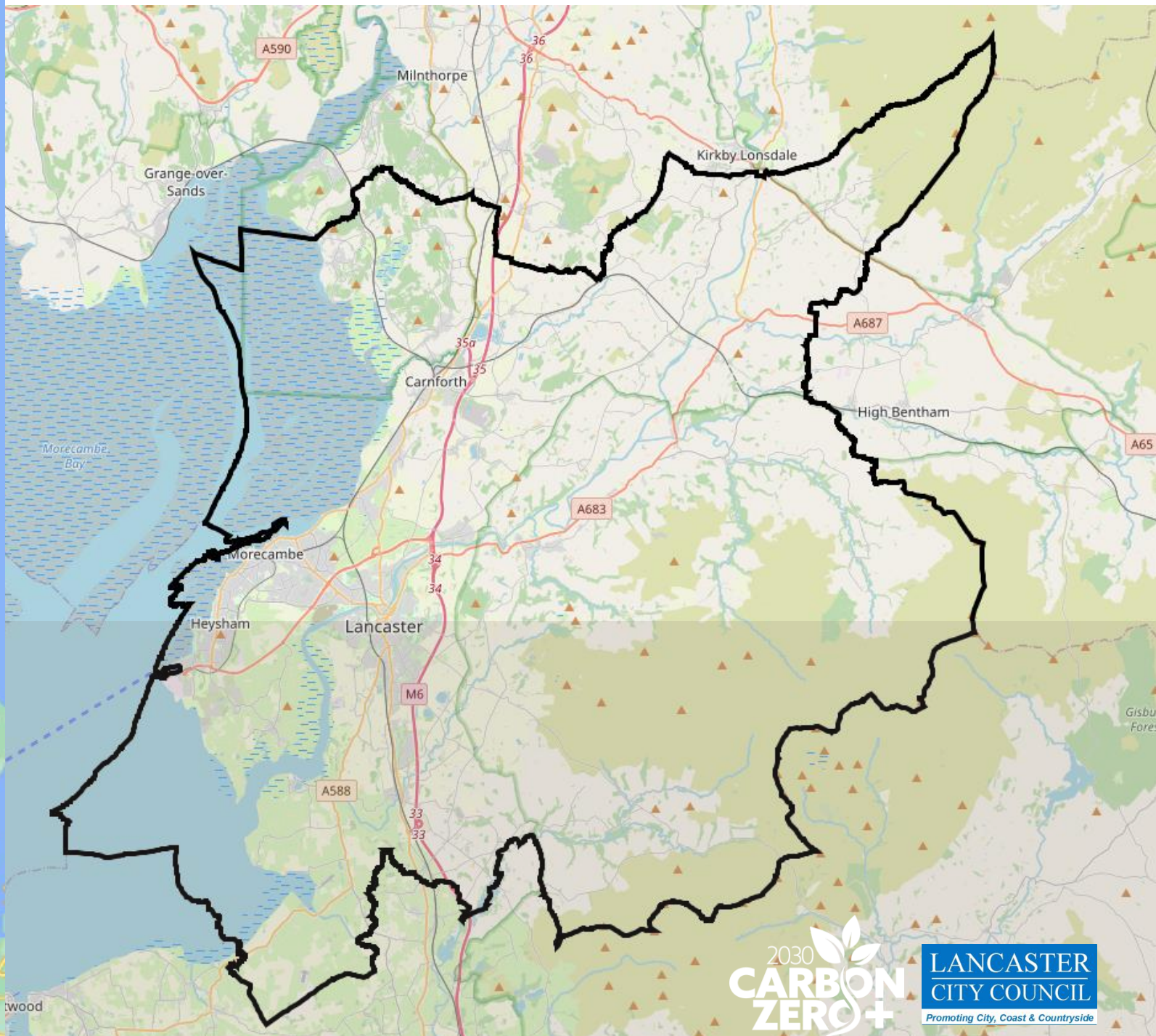




CONTENTS

- Lancaster's People Jury on Climate Change
- Engagement for building our future together





CLIMATE CHANGE PEOPLE'S JURY

“THE COUNCIL
SHOULD FRAME ALL
OF THEIR WORK IN
THE CONTEXT OF
THE CLIMATE
EMERGENCY, AND
ACT ACCORDINGLY
AS IT HAS DONE IN
RESPONSE TO COVID
19.”



LISTENING



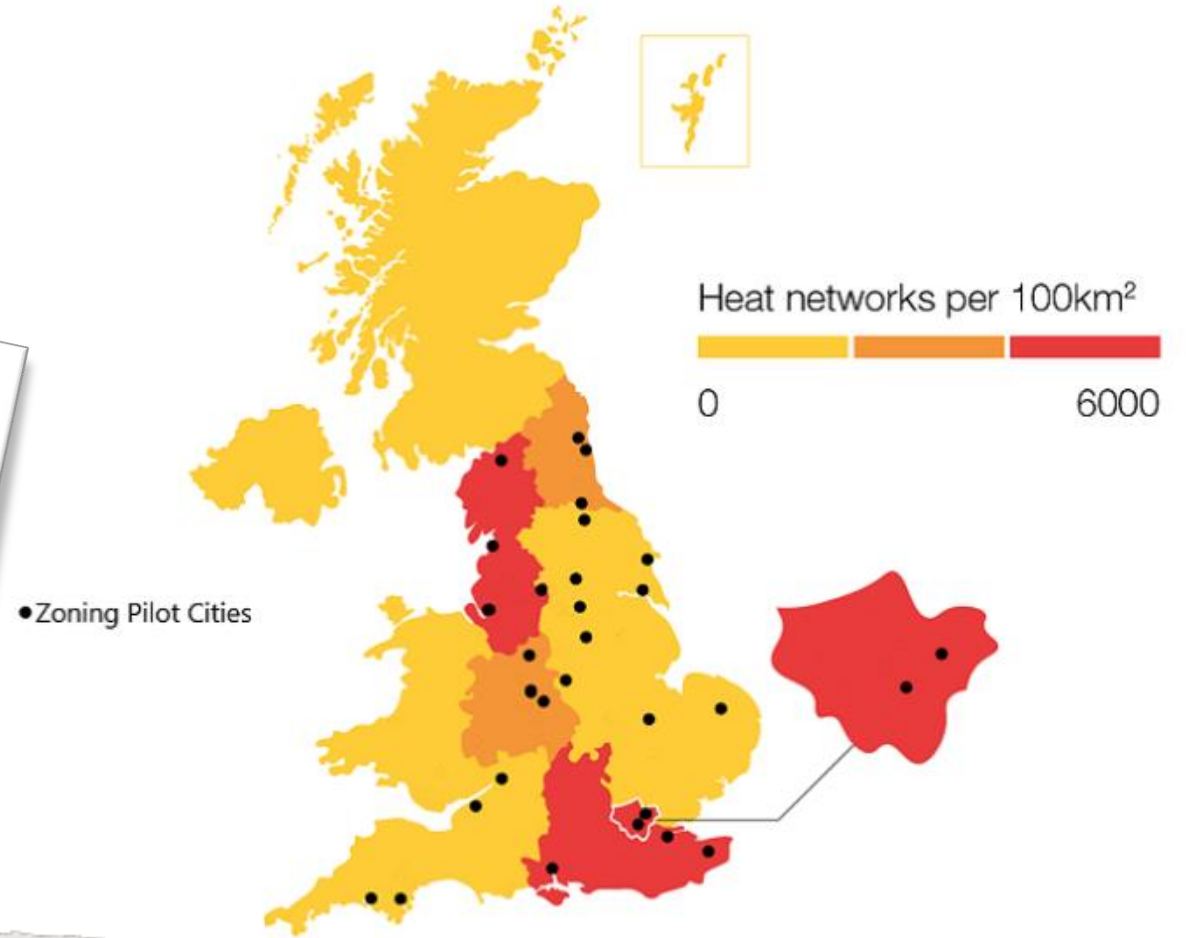


ACT NOW FOR 2030



ACTION

Existing Heat Network Density and Zoning Pilot city location Number of heat networks by region and type



[Details](#) | [Basemap](#) | [Share](#) | [Print](#) | [Measure](#) |

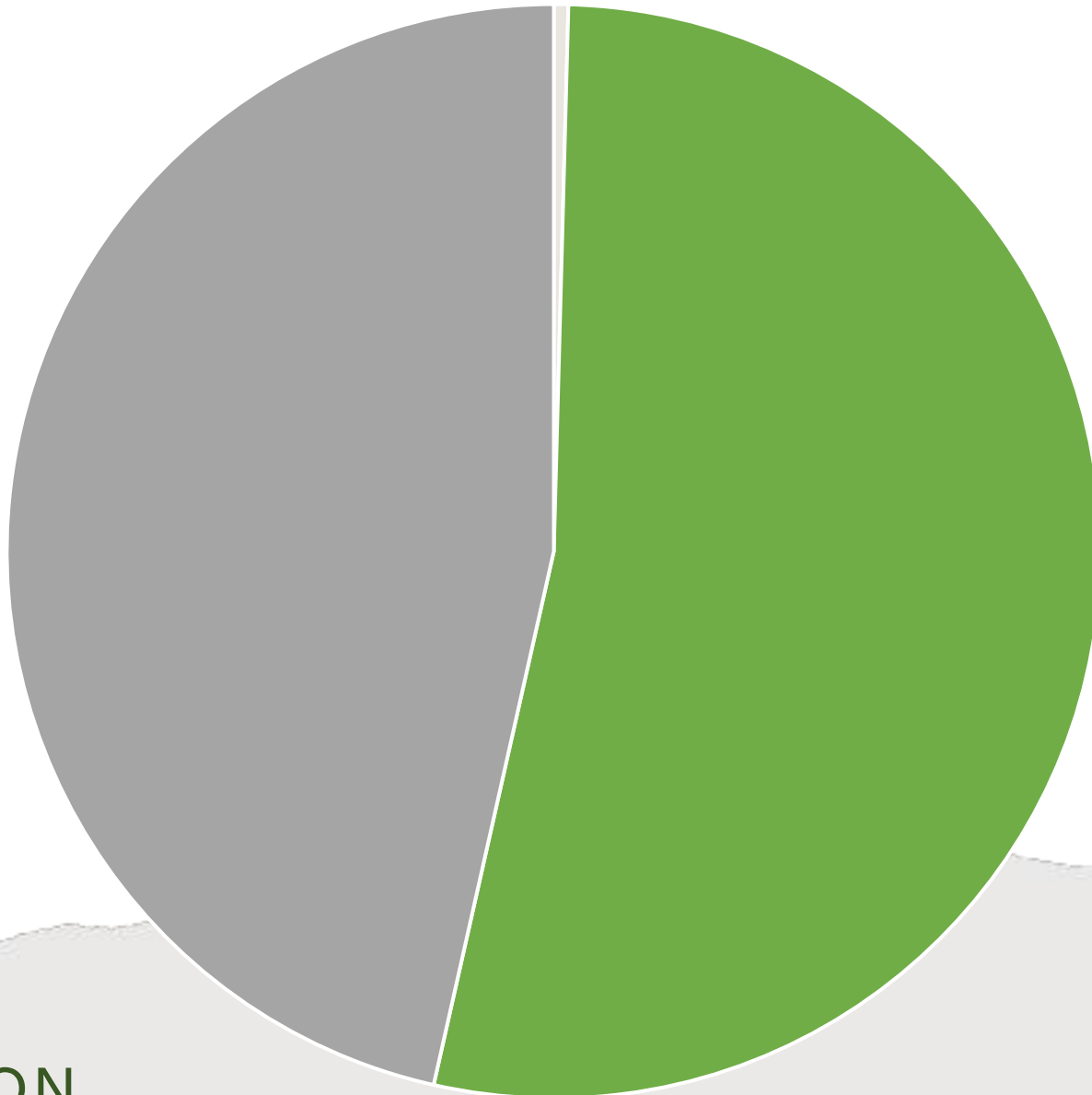
[About](#) | [Content](#) | [Legend](#)

- Legend**
- Meadow Edge**
- Meadow Edge
- Desirelines**
- Desirelines
- Cutting type**
- (AMP) Amenity prestige
 - (INS) Informal Sports
 - (IWM) Introductory wildflower meadow
 - (MLM) Managed Long meadow
 - (POS) Public Open Space
 - (PWM) Perennial wildflower meadow
 - (VRG) Verge



ACTION

Lancaster District ktCO2e Emissions 2020



- Lancaster City Council Emissions
- Emissions We Can Influence
- Remaining Emissions

ACTION



Global greenhouse gas emissions and warming scenarios

- Each pathway comes with uncertainty, marked by the shading from low to high emissions under each scenario.
- Warming refers to the expected global temperature rise by 2100, relative to pre-industrial temperatures.

Annual global greenhouse gas emissions
in gigatonnes of carbon dioxide-equivalents

150 Gt

100 Gt

50 Gt

Greenhouse gas emissions
up to the present

0

1990 2000 2010 2020 2030 2040 2050 2060 2070 2080 2090 2100

No climate policies

4.1 – 4.8 °C

→ expected emissions in a baseline scenario if countries had not implemented climate reduction policies.

Current policies

2.5 – 2.9 °C

→ emissions with current climate policies in place result in warming of 2.5 to 2.9°C by 2100.

Pledges & targets (2.1 °C)

→ emissions if all countries delivered on reduction pledges result in warming of 2.1°C by 2100.

2°C pathways

1.5°C pathways

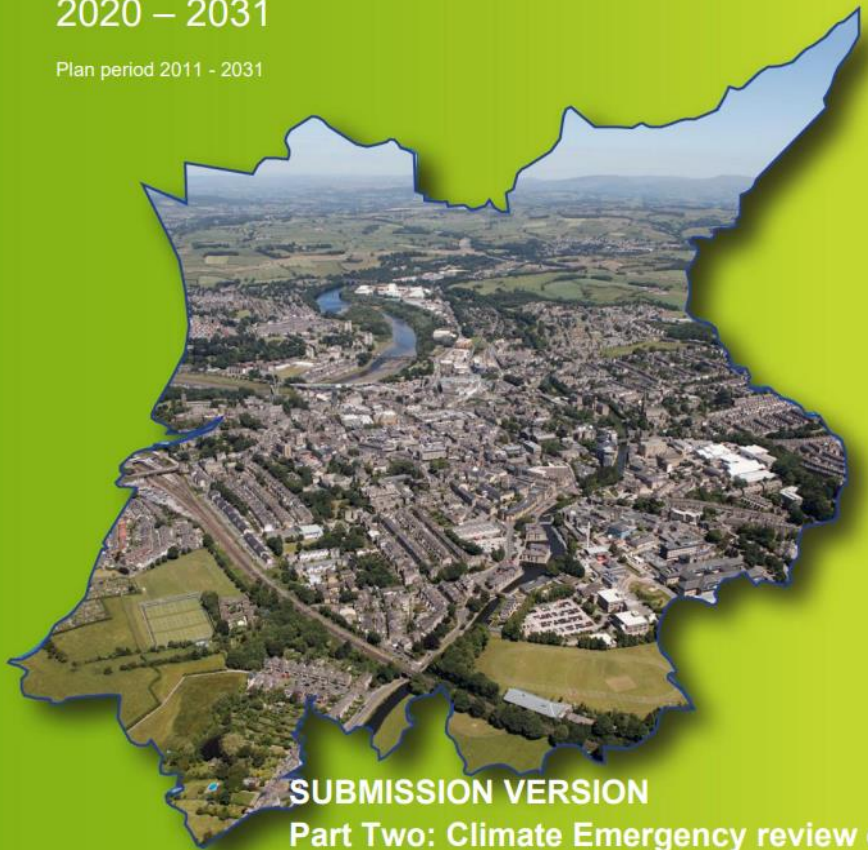
ACTION

A Local Plan for

Lancaster District

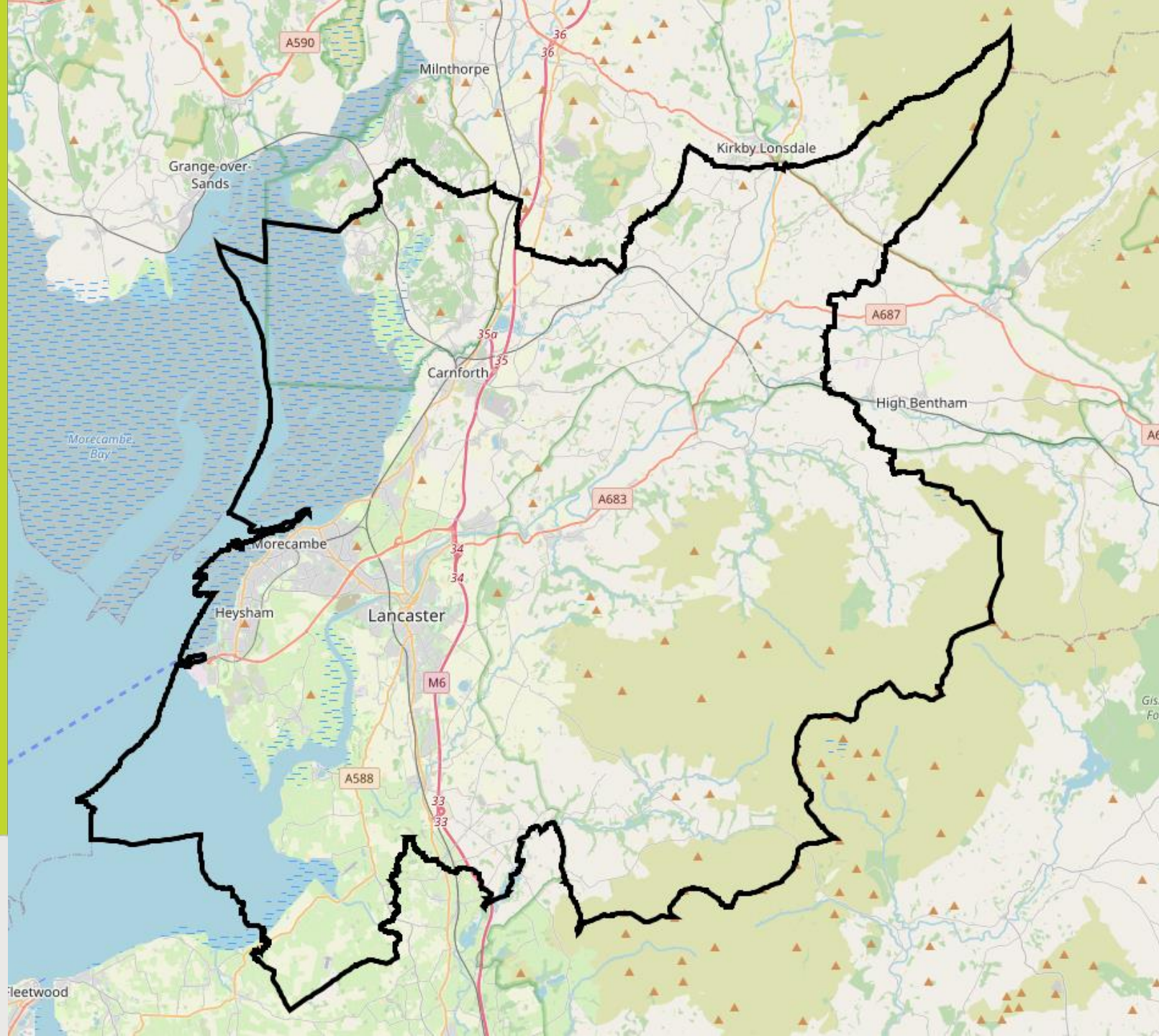
2020 – 2031

Plan period 2011 - 2031



SUBMISSION VERSION
Part Two: Climate Emergency review of
the Development Management
Development Plan Document

NESTING



People's Jury Recommendations

- New development must be made to support climate adaption and mitigation
- Make it easier for people not to use cars
- The council should prioritize and invest in the green energy sector
- Support should be given to improve energy efficiency of homes
- Support the uptake of electric vehicles
- Make it easier for people to grow their own food





COLLABORATING





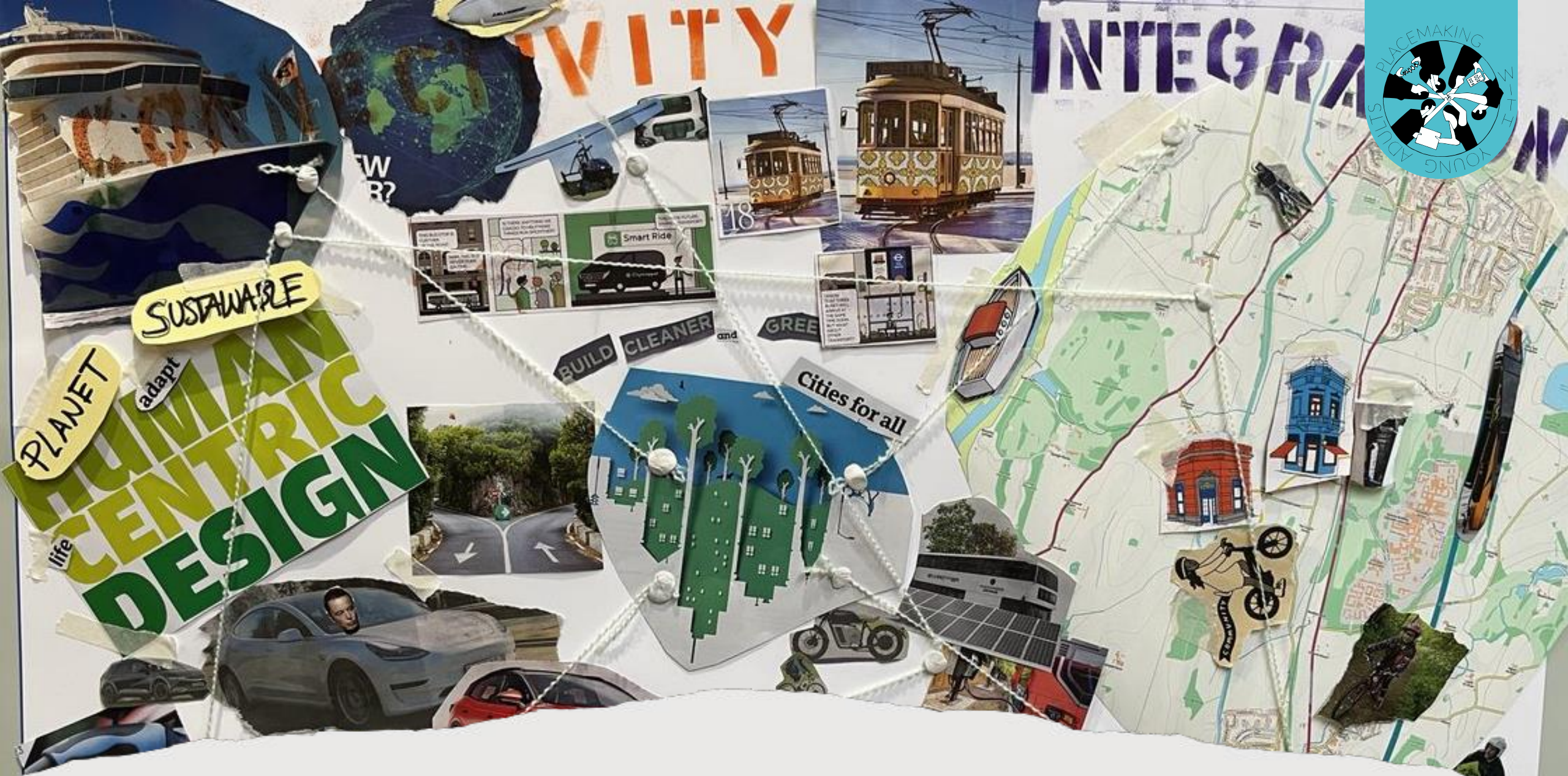
COLLABORATING





COLLABORATING





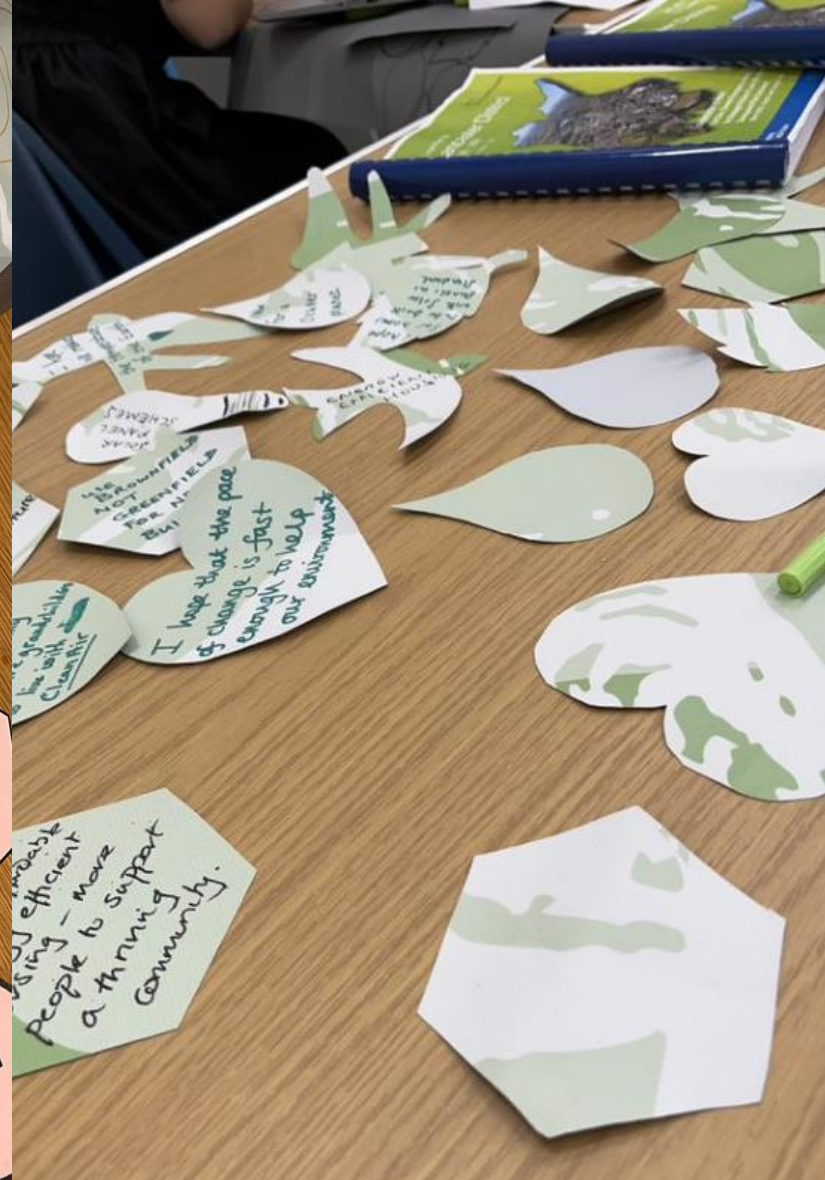
CO-CREATING USING ART





UN CLIMATE CHANGE CONFERENCE UK 2021

IN PARTNERSHIP WITH ITALY



CO-CREATING USING ART



Grassland Management Strategy

Lancaster City Council has changed the way it manages grass cutting, to have numerous positive impacts.

Public Realm
23 September 2021



Reg 18 - Climate Emergency Review of the Local Plan

Public consultation under Regulation 18 of the Town and Country Planning (Local Planning)(England) Regulations 2012

Planning Policy, Lancaster City Council
13 October 2021

STORYTELLING



Climate Emergency

Review of the Local Plan - Renewables

Public consultation



Friday 23 July to 5pm Friday 17 September 2021

Sustainable Design, Energy Efficiency &
Renewable Energy Topic Video

Shaping
a better future



STORYTELLING





ENGAGING PEOPLE ON THEIR OWN TERMS



Promoting City, Coast & Countryside



ENGAGING PEOPLE ON THEIR OWN TERMS





WHY IS IT IMPORTANT FOR ME TO PLANT WILD SEEDS?

The UK has lost 97% of its wildflower meadows since the 1940s. But you can help our declining bees and pollinators by planting wildflowers. Whether you create a small wildflower area in your garden or plant up a pot, by growing these seeds you will attract all kinds of wildlife and helping to tackle climate change!

HOW SHOULD I PLANT MY SEEDS?

STEP 1:

The best time to plant your seeds is Spring and Autumn. Sprinkle your seeds thinly and evenly on the surface of the soil where you want the flowers to bloom. Cover with 1 cm of soil or compost. Water well trying not to disrupt the seeds.

STEP 2:

Place your pot in a sunny spot and leave to grow. Water regularly so the pot doesn't dry out, but don't over water! Your plants will flower at different times. Some plants might not flower until the second year.

STEP 3:

Enjoy the flowers and the wildlife they attract. Why not count how many bees and butterflies that you can see? You can record the pollinators you find at ukpoms.org.uk

STEP 4:

Once the flowers have bloomed and faded, leave them to go to seed. You can collect the seeds and use them for another pot. Then cut back the plant growth to around 2.5 cm.

CLIMATE CHANGE

Put your hand up if you've heard of Climate Change

So, what is climate change?

You can think of the world like a giant house that we all live in, even the animals and plants too, then Climate Change would be like if someone started changing things they weren't supposed to.

- They turn heating up as high as it will go
- They turn all the taps on, spilling water onto the floor
- They turn the TV on with the volume turned up high
- They turn all the lights on, even at night
- They leave the doors and windows wide open
- They unplug the fridge, leaving all the food to go bad

By turning all this stuff on and opening the doors this person is affecting the house for everyone else. They're making the house uncomfortable to live in, and with each passing day it only gets worse. If they change things too much, they risk knocking the whole house down, and then nobody can live in it.

If the house is our Climate, then the person changing everything is Humanity.

ENGAGING PEOPLE ON THEIR OWN TERMS



ENGAGING PEOPLE ON THEIR OWN TERMS





LANCASTER ELECTED MEMBERS



Listening

Acting

Nesting

Collaborating

co-creating with Art

Storytelling

on their own Terms

Elected Members

Reviewing

REVIEWING



“We believe that the only suitable response will be one that brings many organisations and individuals together to work collectively and not separately. This is bigger than Lancaster.”

Lancaster Peoples’ Jury Statement, 2020

CONCLUSION





Susanna Dart

sdart@lancaster.gov.uk

<https://www.lancaster.gov.uk/>

